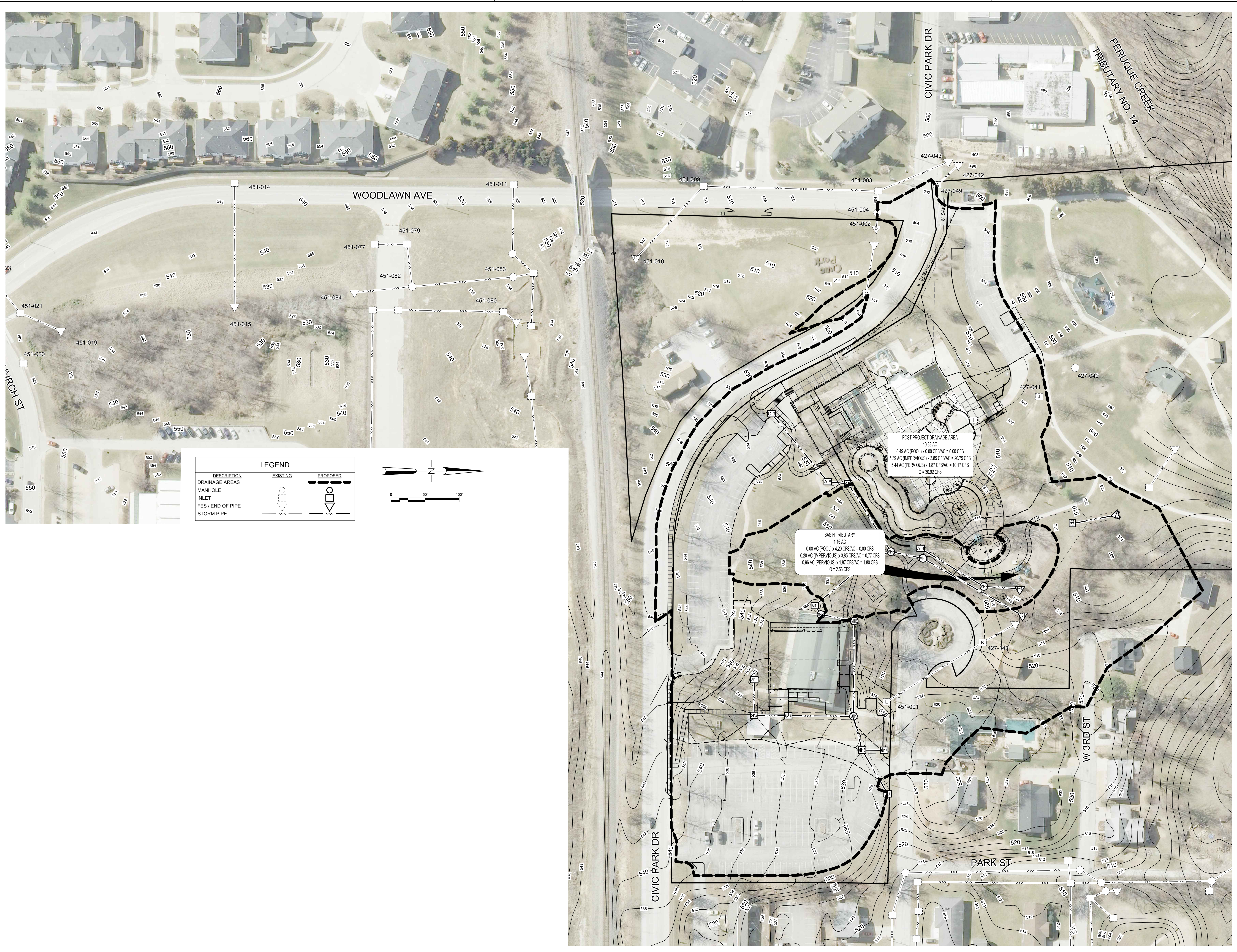
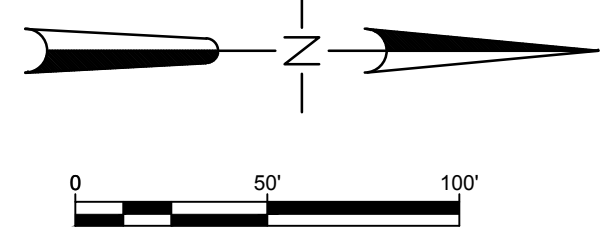


K:\O'FALLON\MO\MO160184_SFS OF FALLON CIVIC PARK\8 CAD\07 CIVIL\DRAINAGE AREA MAP.DWG
 © 2017 2:04:03 PM



DESCRIPTION	LEGEND	
	EXISTING	PROPOSED
DRAINAGE AREAS		
MANHOLE		
INLET		
FES / END OF PIPE		
STORM PIPE		



POST PROJECT DRAINAGE AREA
 10.83 AC
 0.49 AC (POOL) x 0.00 CFS/AC = 0.00 CFS
 5.39 AC (IMPERVIOUS) x 3.85 CFS/AC = 20.75 CFS
 5.44 AC (PERVIOUS) x 1.87 CFS/AC = 10.17 CFS
 Q = 30.92 CFS

BASIN TRIBUTARY
 1.16 AC
 0.00 AC (POOL) x 4.20 CFS/AC = 0.00 CFS
 0.20 AC (IMPERVIOUS) x 3.85 CFS/AC = 0.77 CFS
 0.96 AC (PERVIOUS) x 1.87 CFS/AC = 1.80 CFS
 Q = 2.56 CFS

sfs architecture
 2102 CENTRAL ST. SUITE 317, KANSAS CITY, MO 64108
 P: 314.434.8898 F: 314.434.8280 kdginc.com

KdG
 Kuhlmann design Group, Inc.
 666 Progress Parkway, St. Louis, Missouri 63043
 P: 314.434.8898 F: 314.434.8280 kdginc.com

STATE OF MISSOURI
 ANTHONY JAMES GIPONDO III
 PE-2004031087
 PROFESSIONAL ENGINEER
 8/1/2017

CIVIC PARK IMPROVEMENTS
 O'Fallon Parks and Rec
 Civic Park, O'Fallon,
 Missouri

MARK	DATE	DESCRIPTION

SFS PROJECT NO.: 16862
 ISSUED FOR: CONSTRUCTION DOCUMENTS
 ISSUE DATE: 07/27/2017
 © 2017 SFS ARCHITECTURE

DETENTION DRAINAGE AREA MAP

C5-04