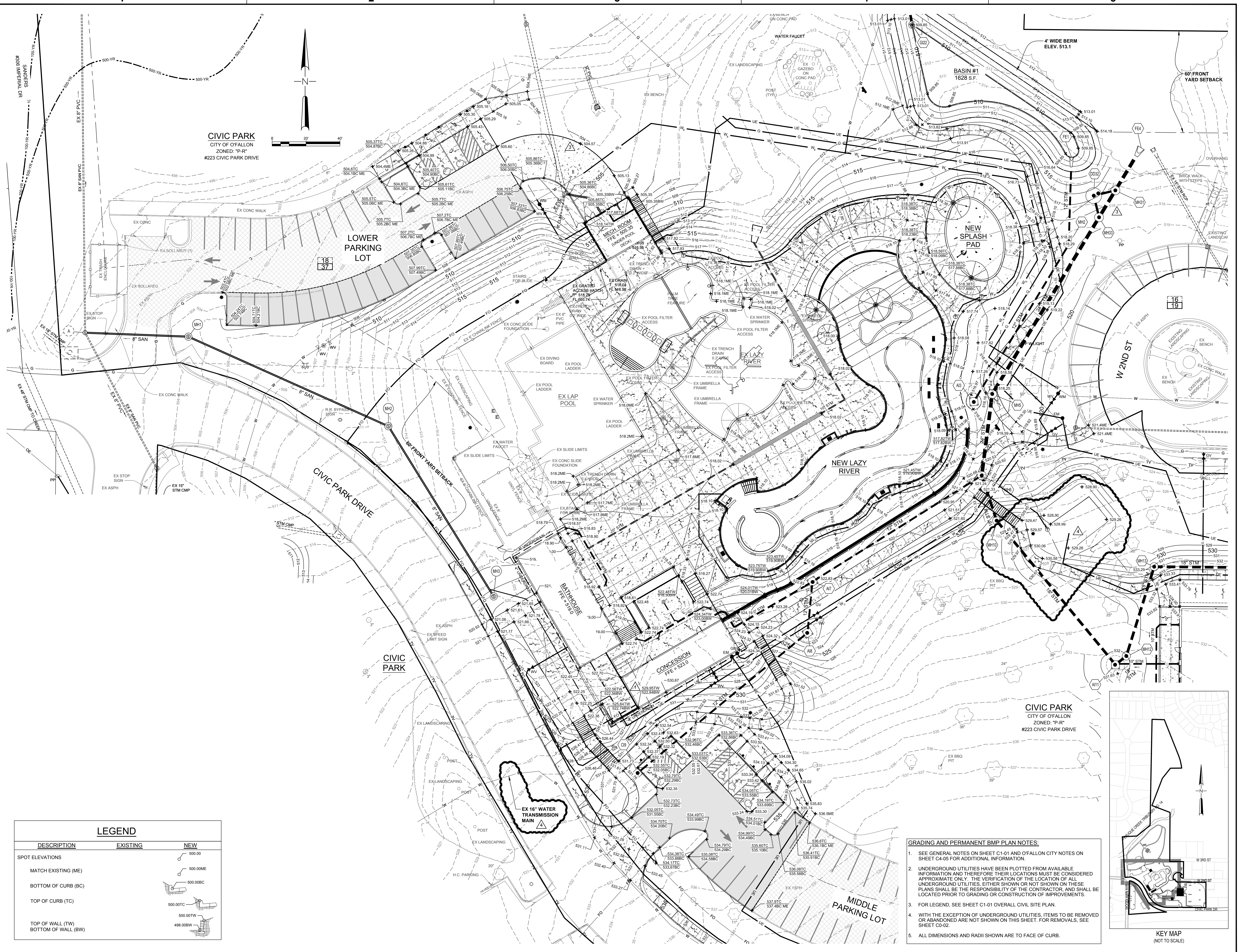
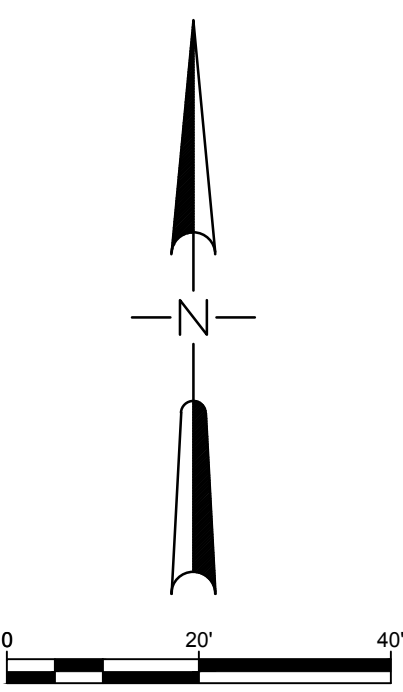


K:\OFFALLON\MOMC\160194_SFS OF FALLON CIVIC PARK\8 CAD\07 CIVIL\SHEETS\941_C2-02_C2-05-CIVIL GRADING AND PERMANENT BMP PLAN.DWG
 © 2017 10:12:25 AM



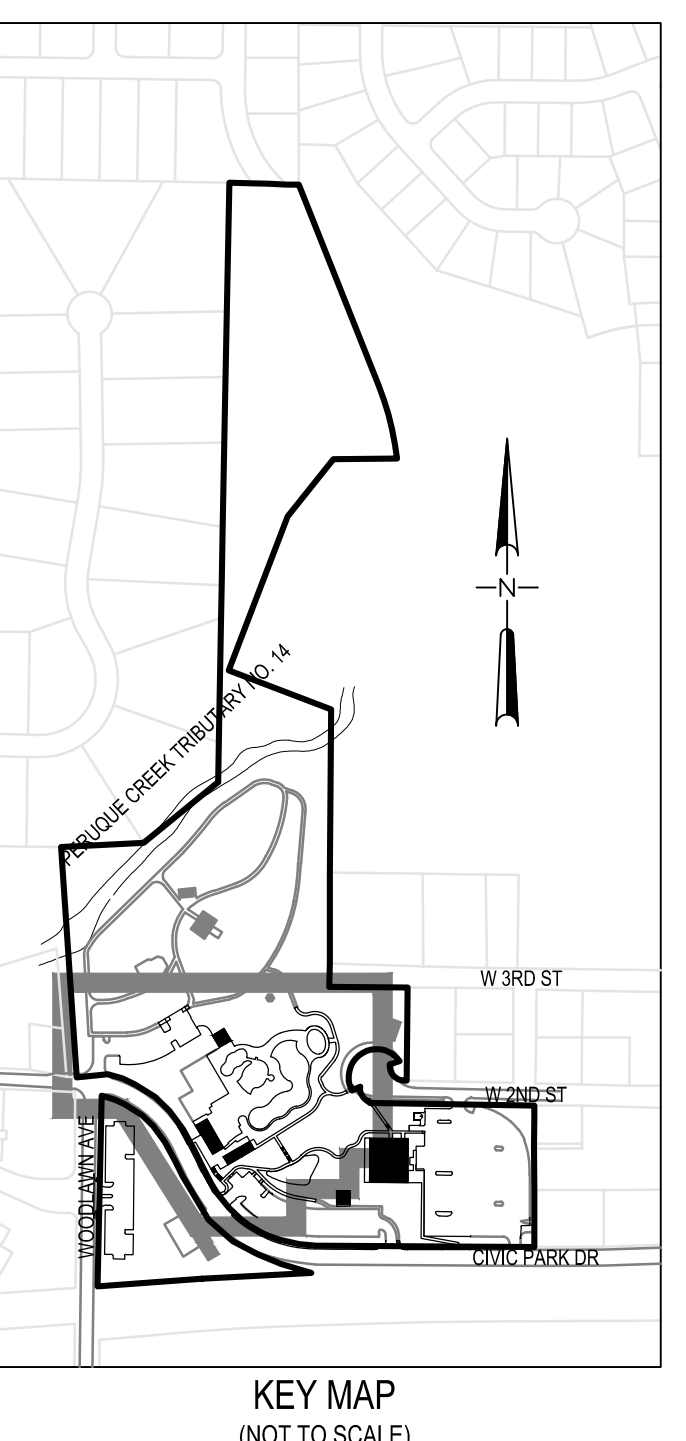
CIVIC PARK
 CITY OF FALLON
 ZONED: "P-R"
 #223 CIVIC PARK DRIVE



LEGEND

DESCRIPTION	EXISTING	NEW
SPOT ELEVATIONS		500.00
MATCH EXISTING (ME)		500.00ME
BOTTOM OF CURB (BC)		500.00BC
TOP OF CURB (TC)		500.00TC
TOP OF WALL (TW)		500.00TW
BOTTOM OF WALL (BW)		498.00BW

- GRADING AND PERMANENT BMP PLAN NOTES:**
- SEE GENERAL NOTES ON SHEET C1-01 AND OFFALLON CITY NOTES ON SHEET C4-05 FOR ADDITIONAL INFORMATION.
 - UNDERGROUND UTILITIES HAVE BEEN PLOTTED FROM AVAILABLE INFORMATION AND THEREFORE THEIR LOCATIONS MUST BE CONSIDERED APPROXIMATE ONLY. THE VERIFICATION OF THE LOCATION OF ALL UNDERGROUND UTILITIES, EITHER SHOWN OR NOT SHOWN ON THESE PLANS SHALL BE THE RESPONSIBILITY OF THE CONTRACTOR, AND SHALL BE LOCATED PRIOR TO GRADING OR CONSTRUCTION OF IMPROVEMENTS.
 - FOR LEGEND, SEE SHEET C1-01 OVERALL CIVIL SITE PLAN.
 - WITH THE EXCEPTION OF UNDERGROUND UTILITIES, ITEMS TO BE REMOVED OR ABANDONED ARE NOT SHOWN ON THIS SHEET. FOR REMOVALS, SEE SHEET C0-02.
 - ALL DIMENSIONS AND RADII SHOWN ARE TO FACE OF CURB.



CIVIC PARK IMPROVEMENTS

O'Fallon Parks and Rec
 Civic Park, O'Fallon,
 Missouri

MARK	DATE	DESCRIPTION
▲	5/27/2017	ADDENDUM #1
▲	8/16/2017	ADDENDUM #3
▲	9/14/2017	ASI #1 - CITY COMMENTS

SFS PROJECT NO: 1682
 ISSUED FOR: CONSTRUCTION DOCUMENTS
 ISSUE DATE: 07/27/17
 © 2017 SFS ARCHITECTURE

**CIVIL GRADING
 AND PERMANENT
 BMP PLAN**

C2-02

sfs architecture
 2100 Central St. Suite 317, Kansas City, MO 64108
 P: 816.452.1234 F: 816.452.1235 WWW.SFSARCH.COM

KdG
 Kuhlmann design Group, Inc.
 66 Progress Parkway, St. Louis, Missouri 63043
 P: 314.434.8898 F: 314.434.8280 kdginc.com

Professional Engineer
 ANTHONY JAMES GIBSON III
 PE-20101067
 9/24/17