

1

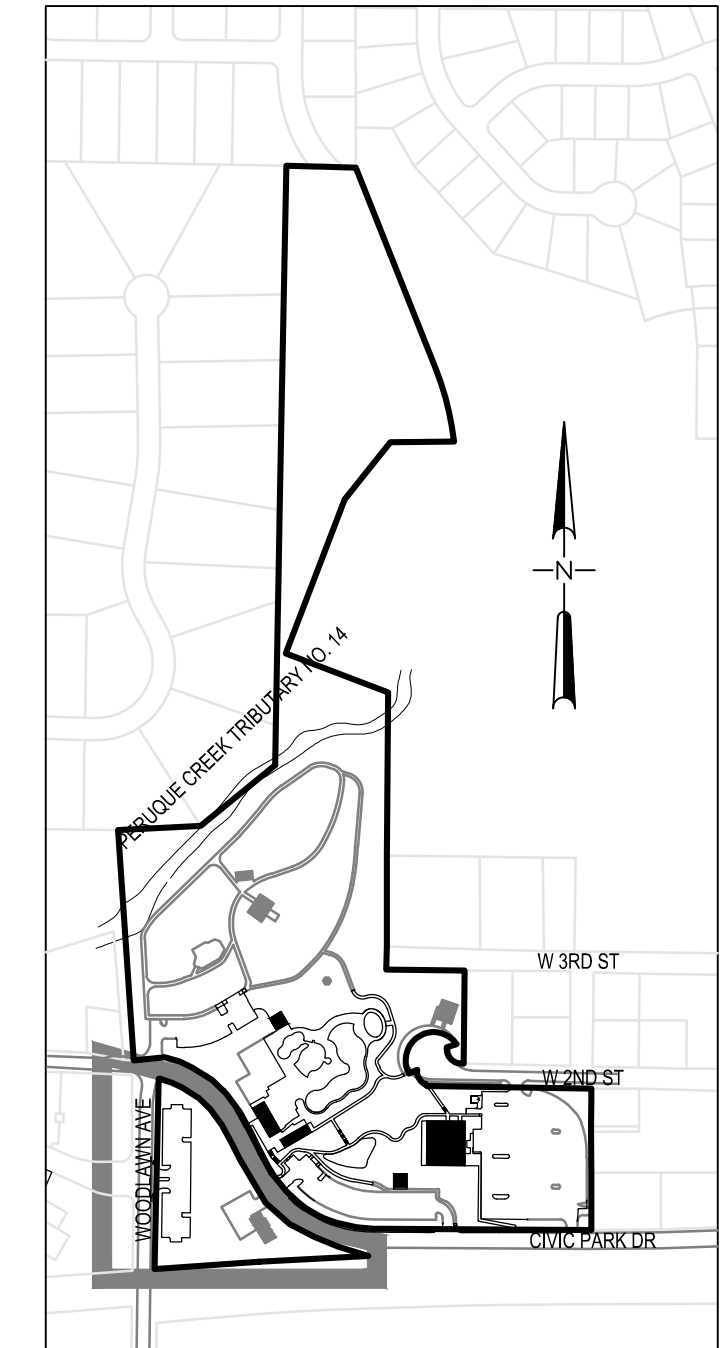
2

3

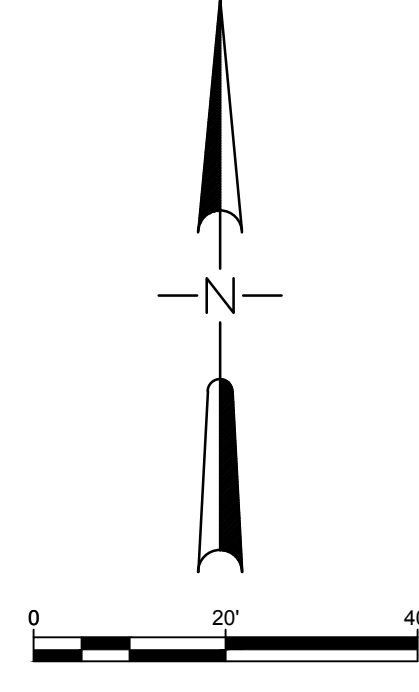
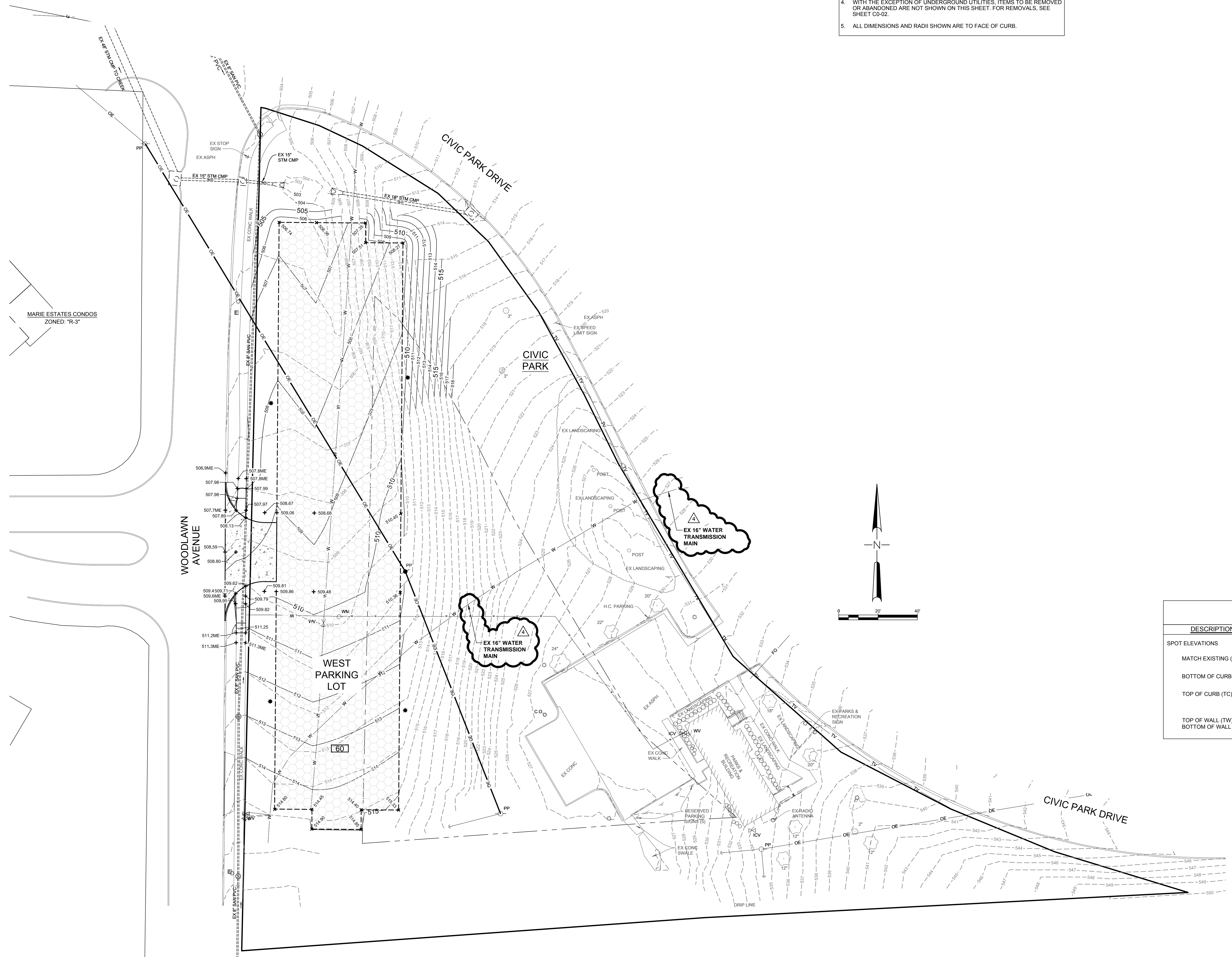
4

5

- GRADING AND PERMANENT BMP PLAN NOTES:**
1. SEE GENERAL NOTES ON SHEET C1-01 AND O'FALLON CITY NOTES ON SHEET C4-05 FOR ADDITIONAL INFORMATION.
  2. UNDERGROUND UTILITIES HAVE BEEN PLOTTED FROM AVAILABLE INFORMATION AND THEREFORE THEIR LOCATIONS MUST BE CONSIDERED APPROXIMATE ONLY. THE VERIFICATION OF THE LOCATION OF ALL UNDERGROUND UTILITIES, EITHER SHOWN OR NOT SHOWN ON THESE PLANS SHALL BE THE RESPONSIBILITY OF THE CONTRACTOR, AND SHALL BE LOCATED PRIOR TO GRADING OR CONSTRUCTION OF IMPROVEMENTS.
  3. FOR LEGEND, SEE SHEET C1-01 OVERALL CIVIL SITE PLAN.
  4. WITH THE EXCEPTION OF UNDERGROUND UTILITIES, ITEMS TO BE REMOVED OR ABANDONED ARE NOT SHOWN ON THIS SHEET. FOR REMOVALS, SEE SHEET C0-02.
  5. ALL DIMENSIONS AND RADII SHOWN ARE TO FACE OF CURB.



KEY MAP  
(NOT TO SCALE)



LEGEND		
DESCRIPTION	EXISTING	NEW
SPOT ELEVATIONS		500.00
MATCH EXISTING (ME)		500.00ME
BOTTOM OF CURB (BC)		500.00BC
TOP OF CURB (TC)		500.00TC
TOP OF WALL (TW)		500.00TW
BOTTOM OF WALL (BW)		498.00BW

**CIVIC PARK IMPROVEMENTS**

O'Fallon Parks and Rec  
Civic Park, O'Fallon,  
Missouri

MARK	DATE	DESCRIPTION
▲	8/14/2017	ASI #1 - CITY COMMENTS

SFS PROJECT NO: 1682  
ISSUED FOR: CONSTRUCTION DOCUMENTS  
ISSUE DATE: 07/27/2017  
© 2017 SFS ARCHITECTURE

CIVIL GRADING  
AND PERMANENT  
BMP PLAN

**C2-04**

K:\O'FALLON\MO\MO160194\_SFS OF FALLON CIVIC PARK\08 CAD\07 CIVIL\07 GRADING AND PERMANENT BMP PLAN.DWG

© 2017 10:13:15 AM

**sfs architecture**  
2100 Central St. Suite 31, Kansas City, MO 64108  
P: 816.454.8898 F: 816.454.8280 www.sfsarch.com

**KdG**  
Kuhlmann design Group, Inc.  
66 Progress Parkway - St. Louis, Missouri 63043  
t: 314.434.8898 f: 314.434.8280 - kdginc.com

