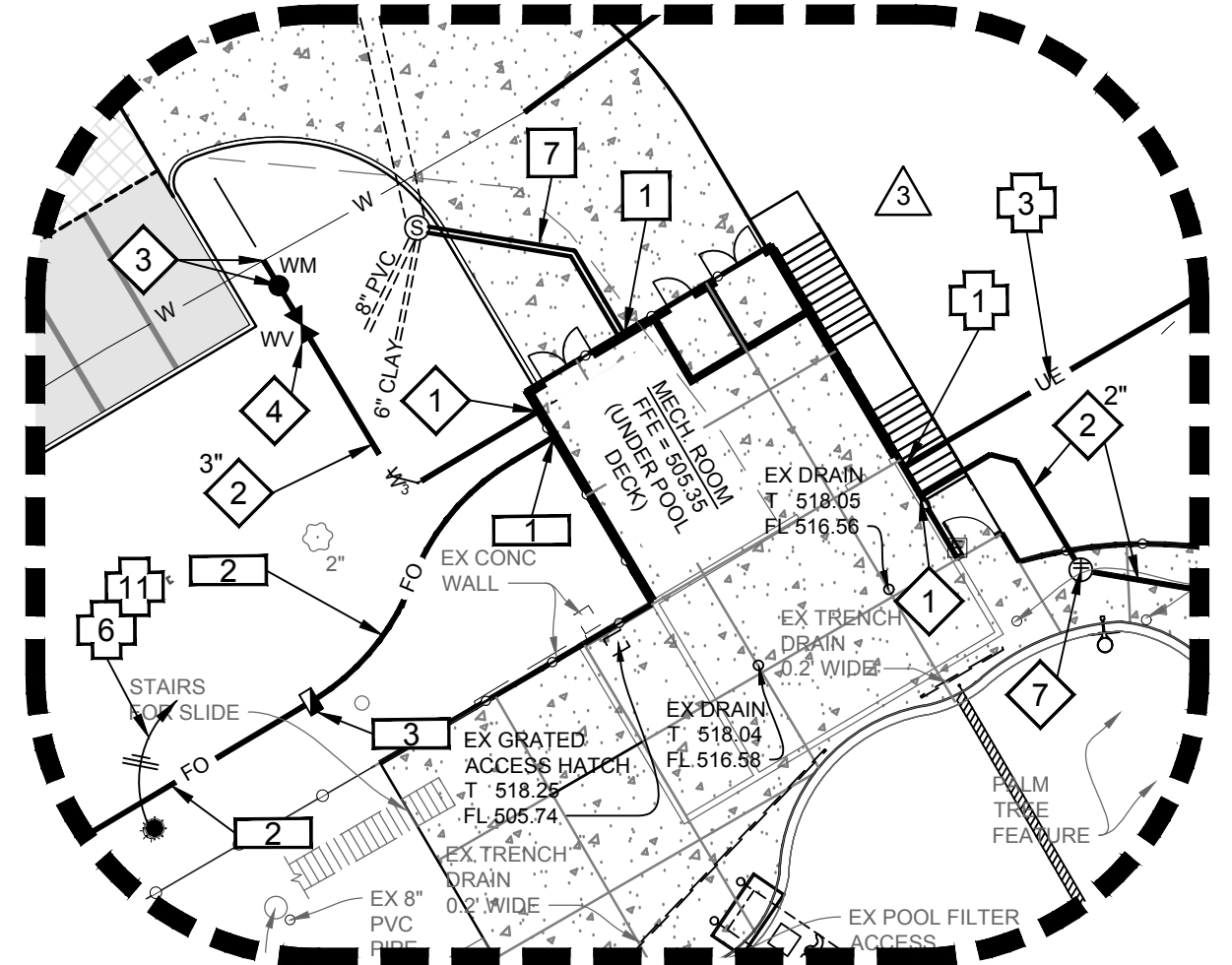
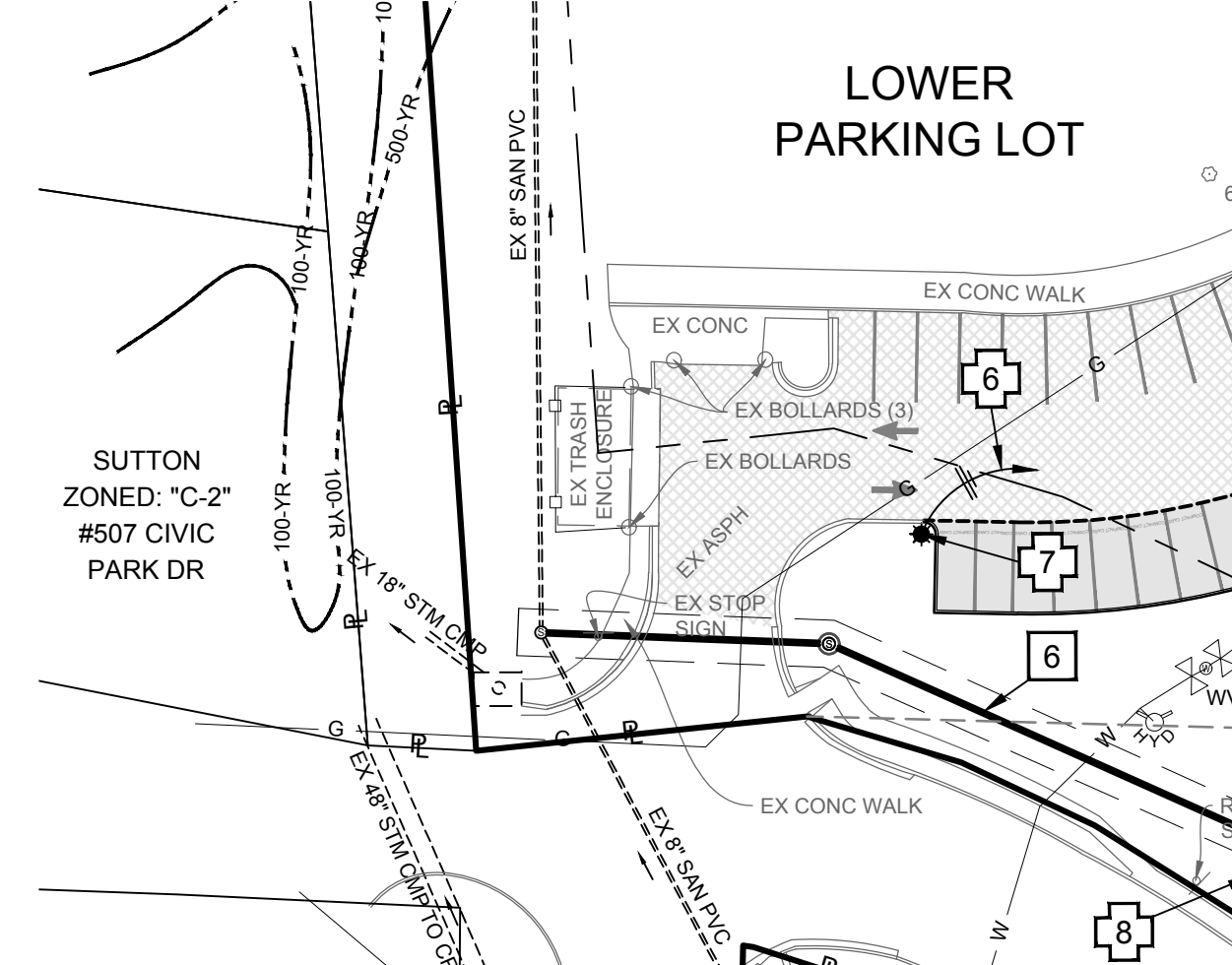


1 PARTIAL SITE PLAN  
SCALE: 1" = 20'



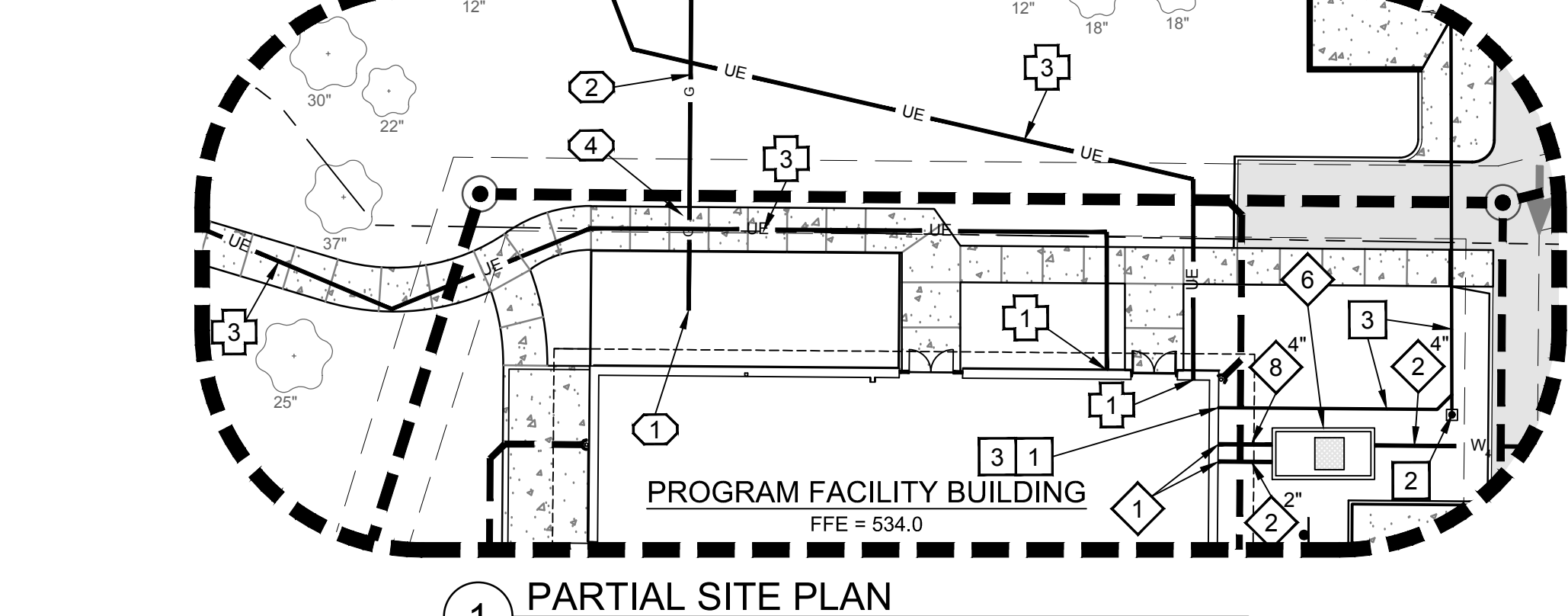
2 PARTIAL SITE PLAN  
SCALE: 1" = 20'



3 PARTIAL SITE PLAN  
SCALE: 1" = 20'

**WATER SERVICE:**

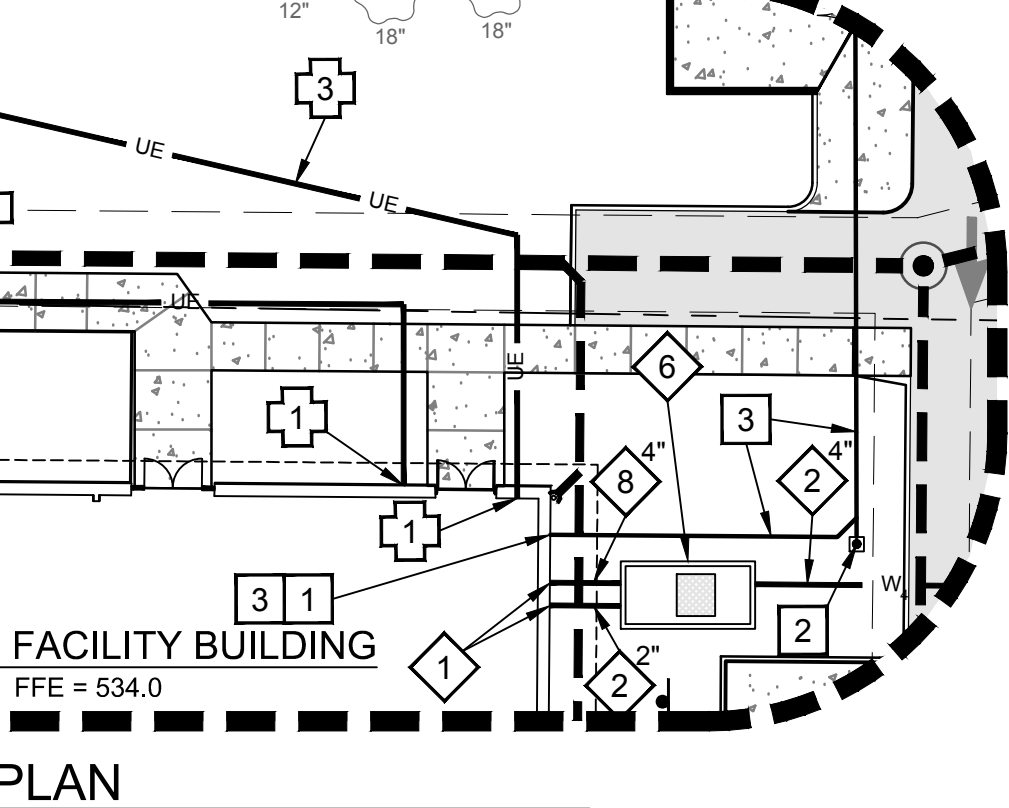
- ALL CONSTRUCTION SHALL BE IN ACCORDANCE WITH LOCAL UTILITY STANDARD DETAILS AND SPECIFICATIONS. SEE SHEET C4-06. THE CONTRACTOR SHALL BE RESPONSIBLE FOR ALL COSTS RELATED TO PROVIDING WATER SERVICE. THE CONTRACTOR SHALL CONFIRM ALL COSTS AND SCOPE OF WORK PRIOR TO BIDDING. THE NEW METERS SHOULD BE SIZED BASED ON THE NEW DOMESTIC AND IRRIGATION WATER LINES. UTILITY MAKES TAPS. SERVICE PIPING MATERIALS ARE PER SPECIFICATIONS AND PLUMBING CODE. SEE PLUMBING PLANS.
- WATER SERVICE CONNECTION POINT. SEE PLUMBING PLANS.
- CONTRACTOR TO FURNISH AND INSTALL NEW DOMESTIC WATER SERVICE LINE. SEE PLAN FOR SIZE. SEE PLUMBING PLANS. FOR WATER SERVICE LINE PROFILES, SEE SHEET C3-04.
- CONTRACTOR TO COORDINATE NEW DOMESTIC WATER METER AND TAP WITH UTILITY WHEN READY TO ESTABLISH NEW SERVICE LINE CONNECTION.
- CONTRACTOR TO FURNISH AND INSTALL NEW GATE VALVE.
- CONTRACTOR TO COORDINATE NEW 6" WATER MAIN RELOCATION WITH UTILITY. FOR WATER MAIN PROFILE, SEE SHEET C3-04.
- CONTRACTOR TO FURNISH AND INSTALL NEW CONCRETE WATER METER VAULT FOR SPLIT SERVICE. COORDINATE WITH UTILITY. SEE DETAIL 11/C4-08.
- CONTRACTOR TO FURNISH AND INSTALL NEW FLUSH MOUNTED YARD HYDRANT. SEE DETAIL 3/4-06 FOR ROCK DRAIN.
- CONTRACTOR TO FURNISH AND INSTALL NEW FIRE WATER SERVICE LINE. SEE PLAN FOR SIZE. SEE PLUMBING PLANS.
- CONTRACTOR TO FURNISH AND INSTALL NEW FILLER SPOUT. SEE POOL PLANS FOR SPOUT DETAIL.



1 PARTIAL SITE PLAN  
SCALE: 1" = 20'

**TELECOMMUNICATION SERVICE:**

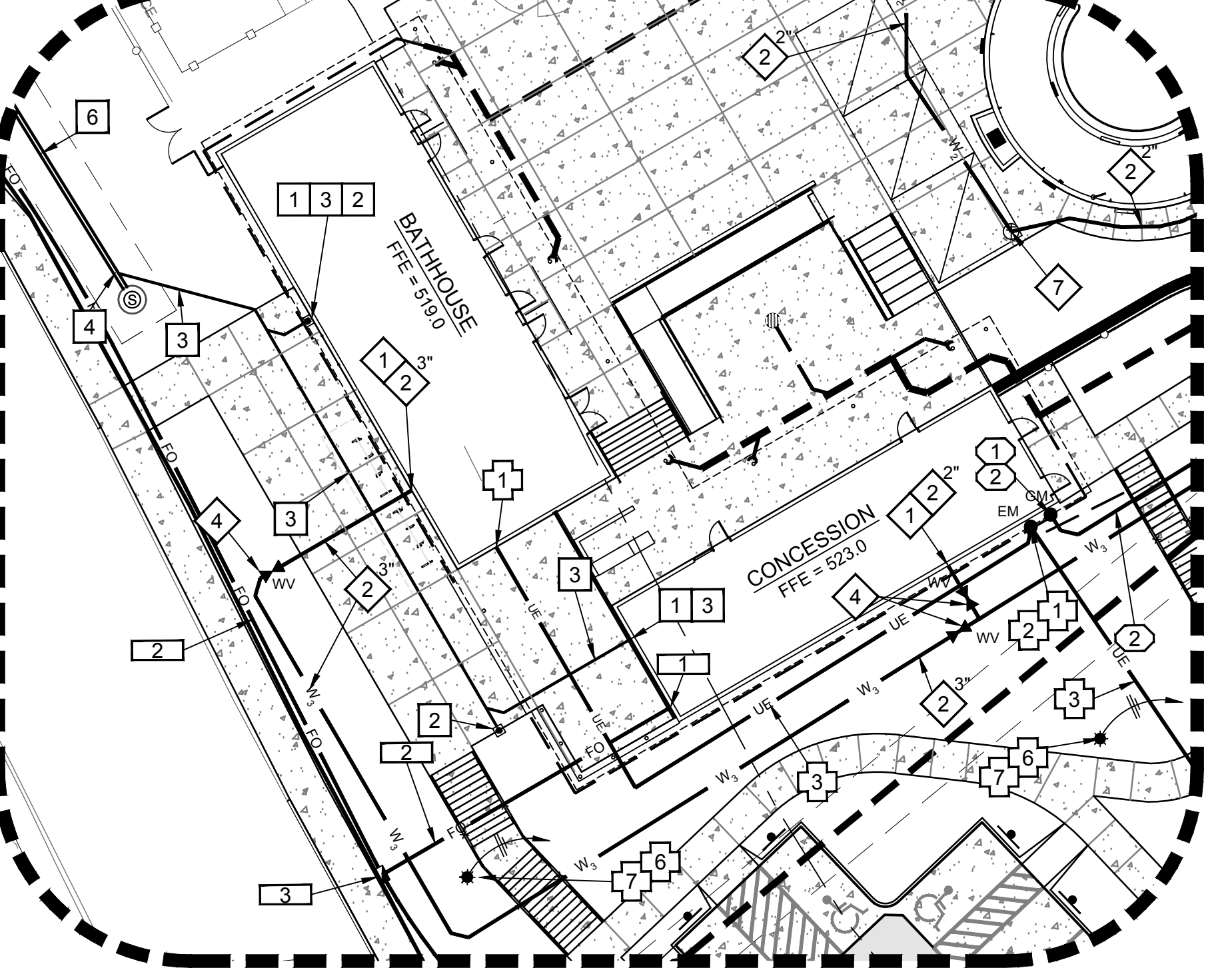
- ALL CONSTRUCTION SHALL BE IN ACCORDANCE WITH LOCAL UTILITY STANDARD DETAILS AND SPECIFICATIONS. THE CONTRACTOR SHALL BE RESPONSIBLE FOR ALL COSTS RELATED TO PROVIDING TELECOMMUNICATION SERVICE. THE CONTRACTOR SHALL CONFIRM ALL COSTS AND SCOPE OF WORK PRIOR TO BIDDING. SEE ELECTRICAL PLANS.
- TELECOMMUNICATION CONNECTION POINT. SEE ELECTRICAL PLANS.
- CONTRACTOR TO FURNISH AND INSTALL NEW FIBER OPTIC SERVICE LINE TO TELECOMMUNICATION CONNECTION POINT LOCATED INSIDE BUILDING. SEE ELECTRICAL PLANS.
- CONTRACTOR TO FURNISH AND INSTALL NEW QUAZITE PG-1324-BA-18 IN-GROUND 1"X24" PULLBOX WITH COVER PG-1324-CA-0021 LABELED "FIBER-OPTIC". SEE ELECTRICAL PLANS.
- CONTRACTOR TO RE-LOCATE EXISTING FIBER OPTIC PULLBOX OUTSIDE OF NEW ENTRANCE AND RE-ROUTE ALL EXISTING CONNECTION. CONTRACTOR TO MINIMIZE ANY LOSS OF SERVICE. COORDINATE WITH CITY.



2 PARTIAL SITE PLAN  
SCALE: 1" = 20'

**GAS SERVICE:**

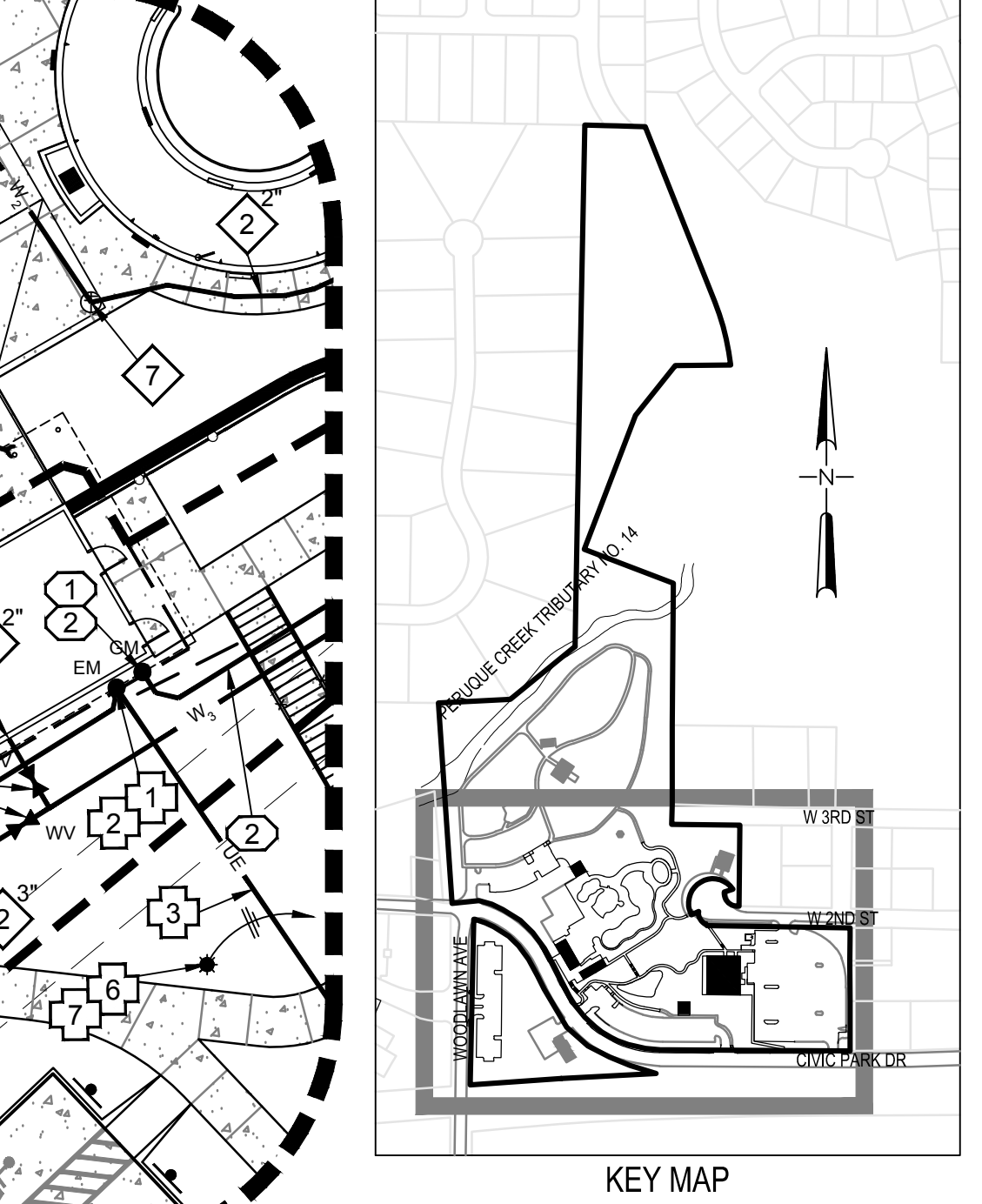
- ALL CONSTRUCTION SHALL BE IN ACCORDANCE WITH LOCAL UTILITY STANDARD DETAILS AND SPECIFICATIONS. THE CONTRACTOR SHALL BE RESPONSIBLE FOR ALL COSTS RELATED TO PROVIDING GAS SERVICE. THE CONTRACTOR SHALL CONFIRM ALL COSTS AND SCOPE OF WORK PRIOR TO BIDDING. THE CONTRACTOR IS RESPONSIBLE FOR PIPE SIZING, INSPECTIONS, AND ALL ITEMS RELATED TO PROVIDING COMPLETE GAS SERVICE. SEE MECHANICAL PLANS.
- GAS SERVICE CONNECTION POINT. SEE PLUMBING PLANS.
- CONTRACTOR TO COORDINATE WITH UTILITY FOR NEW GAS SERVICE LINE FROM TAP TO METER.
- CONTRACTOR TO COORDINATE THE FURNISHING AND PLACEMENT OF NEW GAS METER AND TAP WITH UTILITY.
- CONTRACTOR TO FURNISH AND INSTALL NEW GATE VALVE.
- CONTRACTOR TO COORDINATE NEW 2" GAS MAIN RELOCATION WITH UTILITY. RELOCATION BY OTHERS.



2 PARTIAL SITE PLAN  
SCALE: 1" = 20'

**SANITARY SEWER:**

- ALL CONSTRUCTION SHALL BE IN ACCORDANCE WITH LOCAL UTILITY STANDARD DETAILS AND SPECIFICATIONS. THE CONTRACTOR SHALL BE RESPONSIBLE FOR ALL COSTS RELATED TO PROVIDING SANITARY SEWER SERVICE. THE CONTRACTOR SHALL CONFIRM ALL COSTS AND SCOPE OF WORK PRIOR TO BIDDING.
- SANITARY CONNECTION POINT. SEE PLUMBING PLANS.
- CONTRACTOR TO FURNISH AND INSTALL TYPE Y CLEANOUT TO GRADE. CLEANOUTS TO BE PLACED EVERY 75' OR AS REQUIRED BY CODE. CLEANOUTS IN PAVED AREAS TO HAVE CONCRETE COLAR. SEE DETAIL 13/C4-01.
- CONTRACTOR TO FURNISH AND INSTALL NEW 6" SCH 40 SANITARY LATERAL WITH A MINIMUM 2% SLOPE TO MAIN FOR SANITARY LATERAL PROFILES. SEE SHEET C3-03.
- CONTRACTOR TO CONNECT TO NEW SANITARY MAIN BY 1 x 4 WYE.
- CONTRACTOR TO CONNECT TO EX SANITARY MAIN BY MACHINE TAP. CONTRACTOR SHALL COORDINATE CONNECTION WITH UTILITY AND FOLLOW ALL UTILITY CONNECTION REQUIREMENTS.
- NEW 8" SANITARY MAIN. SEE SHEET C2-01 AND C2-02 FOR PLAN AND C3-03 FOR PROFILE.
- CONTRACTOR TO FURNISH AND INSTALL NEW 8" SCH 40 SANITARY LATERAL WITH A MINIMUM 2% SLOPE TO EX MH FROM THE PLUMBING CONNECTION POINT. SEE SHEET C3-03 FOR PROFILE. SEE PLUMBING PLANS.



KEY MAP  
(NOT TO SCALE)

**UTILITY GENERAL NOTES:**

- SEE GENERAL NOTES ON SHEET C1-01 AND O'FALLON CITY NOTES ON SHEET C4-05 FOR ADDITIONAL INFORMATION.
- UNDERGROUND UTILITIES HAVE BEEN PLOTTED FROM AVAILABLE INFORMATION AND THEREFORE THEIR LOCATIONS MUST BE CONSIDERED APPROXIMATE ONLY. THE VERIFICATION OF THE LOCATION OF ALL UNDERGROUND UTILITIES, EITHER SHOWN OR NOT SHOWN ON THESE PLANS SHALL BE THE RESPONSIBILITY OF THE CONTRACTOR, AND SHALL BE LOCATED PRIOR TO GRADING OR CONSTRUCTION OF IMPROVEMENTS.
- FOR LEGEND, SEE SHEET C1-01 OVERALL CIVIL SITE PLAN.
- WITH THE EXCEPTION OF UNDERGROUND UTILITIES, ITEMS TO BE REMOVED OR ABANDONED ARE NOT SHOWN ON THIS SHEET. FOR REMOVALS, SEE SHEET C0-01.
- THE CONTRACTOR SHALL CONFIRM ALL NEW UTILITY TAP LOCATIONS WITH THE UTILITY OWNERS.
- IT IS THE RESPONSIBILITY OF THE CONTRACTOR TO VERIFY THE ACTUAL LOCATIONS AND AVAILABILITY OF ALL EXISTING AND PROPOSED UTILITIES IN THE FIELD PRIOR TO GROUND BREAKING.
- UNDERGROUND CONDUIT TO SIGNS, LOT LIGHTS, ETC. SHALL BE PLACED IN GRASS OR LANDSCAPE AREAS WHENEVER POSSIBLE. THE LOCATION OF THE CONDUIT AS SHOWN ON THESE PLANS SHALL BE CONSIDERED TO BE SCHEMATIC WITH ACTUAL LOCATION TO BE VERIFIED BY THE CONTRACTOR.
- SEE ELECTRICAL PLANS FOR SIZE OF CONDUIT AND WIRE ON ALL ELECTRICAL SERVICE.
- THE CONTRACTOR IS RESPONSIBLE FOR PERMITS AND/OR APPROVALS NECESSARY FOR ANY WORK WITHIN THE RIGHT-OF-WAY.
- THE CONTRACTOR SHALL CONFIRM UTILITY SIZES AND LOCATIONS DEPICTED HEREON WITH BUILDING PLANS PRIOR TO BIDDING OR CONSTRUCTION.

**ELECTRIC SERVICE:**

- ALL CONSTRUCTION SHALL BE IN ACCORDANCE WITH LOCAL UTILITY STANDARD DETAILS AND SPECIFICATIONS. THE CONTRACTOR SHALL BE RESPONSIBLE FOR ALL COSTS RELATED TO PROVIDING ELECTRICAL SERVICE. THE CONTRACTOR SHALL CONFIRM ALL COSTS AND SCOPE OF WORK PRIOR TO BIDDING. SEE ELECTRICAL PLANS.
- ELECTRICAL CONNECTION POINT. SEE ELECTRICAL PLANS.
- CONTRACTOR TO FURNISH AND INSTALL NEW CT CABINET AND METER BASE AND COORDINATE FURNISHING AND SETTING EQUIPMENT WITH UTILITY AND ELECTRICAL PLANS.
- CONTRACTOR TO FURNISH AND INSTALL NEW CONDUIT AND CABLE FROM TO THE CONNECTION POINT. SEE ELECTRICAL PLANS FOR SIZES. CONTRACTOR TO COORDINATE WITH UTILITY FOR THE CONNECTION TO TRANSFORMER.
- CONTRACTOR TO COORDINATE INSTALLATION OF TRANSFORMER SET BY UTILITY. THE CONTRACTOR IS TO FURNISH AND INSTALL NEW TRANSFORMER PAD PER THE SPECIFICATIONS AND ANY BOLLARD PROTECTION REQUIRED. CONTRACTOR TO CONFIRM EXACT PLACEMENT WITH UTILITY. THE CONTRACTOR IS RESPONSIBLE FOR ALL COSTS ASSOCIATED WITH PROVIDING NEW ELECTRICAL SERVICE.
- CONTRACTOR TO COORDINATE WITH UTILITY ON THE PLACEMENT OF NEW POWER POLE ALONG CIVIC PARK DRIVE AND THE ROUTING OF PRIMARY CONDUCTORS TO THE TRANSFORMER. SEE ELECTRICAL PLANS.
- CONTRACTOR TO FURNISH AND INSTALL NEW CONDUIT AND WIRE TO SITE LIGHTS AND SIGNS. SEE ELECTRICAL PLANS.
- CONTRACTOR TO FURNISH AND INSTALL NEW SITE LIGHTING. SEE ELECTRICAL PLANS FOR DETAILS.
- CONTRACTOR TO MAINTAIN OR REPAIR ANY DAMAGE TO EXISTING CONDUIT AND WIRE TO EXISTING SITE LIGHTING THAT IS MARKED TO REMAIN. SEE ELECTRICAL PLANS.
- CONTRACTOR TO REMOVE AND REPLACE EXISTING LIGHT FIXTURE WITH NEW LIGHT FIXTURE. SEE ELECTRICAL PLANS.
- CONTRACTOR TO COORDINATE WITH UTILITY ON THE RELOCATION OF EXISTING OVERHEAD LINES AND POLE.
- CONTRACTOR TO FURNISH AND INSTALL NEW OUTLET PEDESTAL, INCLUDING NEW CONDUIT AND WIRE. SEE ELECTRICAL PLANS.
- CONTRACTOR TO FURNISH AND INSTALL NEW QUAZITE PG-2436-BA-24 IN-GROUND 24"X36" PULLBOX WITH COVER PG-2436-CA-0017 LABELED "ELECTRIC". SEE ELECTRICAL PLANS.

**sfsarchitecture**  
2100 GERRARD ST. SUITE 317, KANSAS CITY, MO 64108  
P: 816.454.8898 | F: 314.454.8280 | kdg@kdg.com

**KdG**  
Kuhlmann design Group, Inc.  
666 Progress Parkway, St. Louis, Missouri 63043  
P: 314.454.8898 | F: 314.454.8280 | kdg.com

STATE OF MISSOURI  
PROFESSIONAL ENGINEER  
ANTHONY JAMES GIBSON III  
PE-20101067  
9/24/17

**CIVIC PARK IMPROVEMENTS**  
O'Fallon Parks and Rec  
Civic Park, O'Fallon,  
Missouri

SFS PROJECT NO: 1682  
ISSUED FOR: CONSTRUCTION DOCUMENTS  
ISSUE DATE: 07/27/2017  
© 2017 SFS ARCHITECTURE

**CIVIL SITE UTILITY PLAN**  
**C3-01**

K:O'FALLON MO MO160180194 SFS OF O'FALLON CIVIC PARK CADD CIVIL SHEETS 841\_C3-01 - CIVIL SITE UTILITY PLAN.DWG  
© 2017 10:44:41 AM