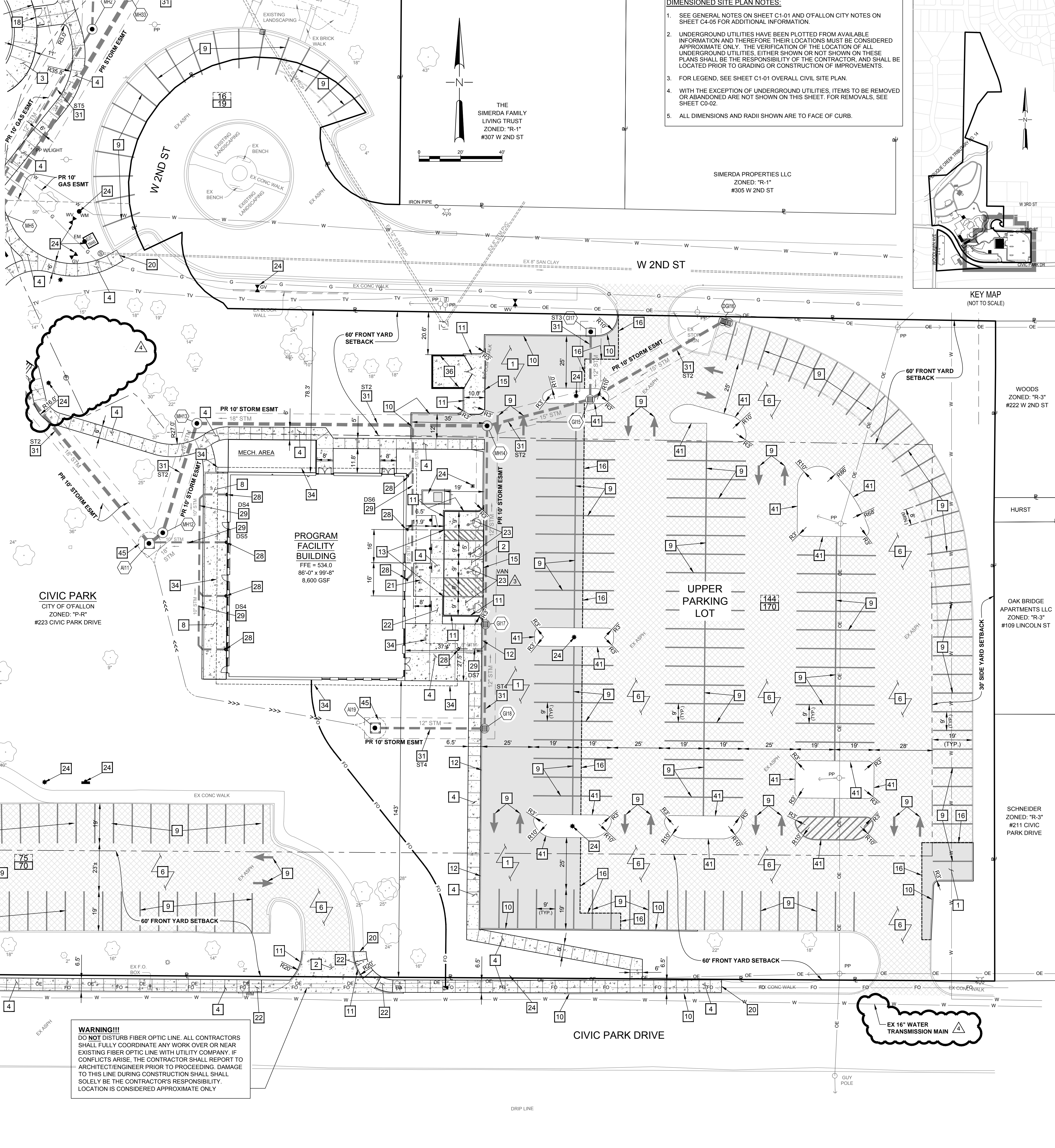


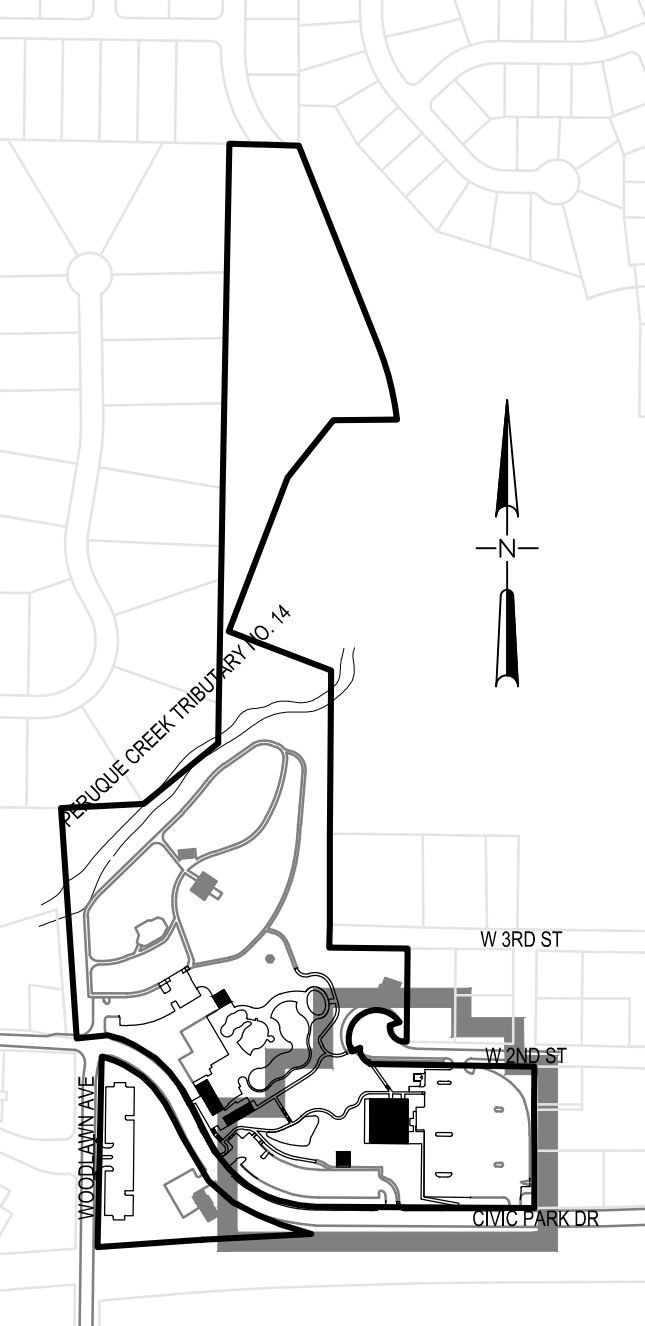
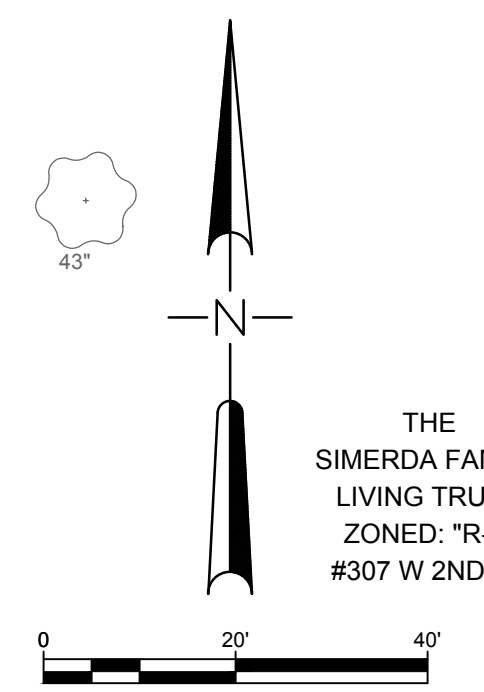
- KEYED NOTES**
- CONTRACTOR SHALL FURNISH AND INSTALL NEW ASPHALT PAVEMENT, SEE DETAIL 1/C4-01
 - CONTRACTOR SHALL FURNISH AND INSTALL NEW CONCRETE PAVEMENT, SEE DETAIL 2/C4-01
 - CONTRACTOR SHALL FURNISH AND INSTALL NEW CONCRETE POOL DECK, SEE DETAIL 3/C4-02
 - CONTRACTOR SHALL FURNISH AND INSTALL NEW CONCRETE SIDEWALK, SEE DETAIL 8/C4-01
 - CONTRACTOR SHALL FURNISH AND INSTALL MILL AND OVERLAY ON ALL EXISTING ASPHALT PARKING LOTS TO REMAIN IN PLACE (ALTERNATE), SEE DETAIL 20/C4-02
 - CONTRACTOR SHALL FURNISH AND INSTALL NEW PVC COATED 72"x 48" CHAIN LINK SINGLE LEAF GATE. THE GATE SHALL BE HINGED SO THAT IT MAY SWING IN EITHER DIRECTION AND LAY FLUSH AGAINST THE FENCE. THE GATE SHALL MATCH THE EXISTING FENCE IN COLOR AND HEIGHT. SEE DETAIL 18/C4-04 FOR FACILITY PROGRAM REAR PATIO, POOL ENTRANCE PATIO, AND MECH. ROOM, INCLUDING RAMPS AND STAIRS. SEE ARCH. AND STRUC. PLANS
 - CONTRACTOR SHALL FURNISH AND INSTALL NEW STRIPES, ARROWS, SPACES STRIPED ALONG CURVES SHALL BE MEASURED ALONG THE INSIDE RADIUS. SEE DETAIL 16/C4-01 MINIMUM STANDARD SPACE = 9'W x 19'L MINIMUM COMPACT SPACE = 8'W x 19'L
 - CONTRACTOR SHALL FURNISH AND INSTALL NEW CITY OF OFALLON INTEGRAL VERTICAL CURB, SEE DETAIL 18/C4-02
 - CONTRACTOR SHALL FURNISH AND INSTALL NEW INTEGRAL VERTICAL CURB AND SIDEWALK, SEE DETAIL 18/C4-01
 - CONTRACTOR SHALL FURNISH AND INSTALL NEW INTEGRAL VERTICAL CURB AND SIDEWALK FLUSH WITH PAVEMENT, SEE DETAIL 5/C4-01
 - CONTRACTOR SHALL FURNISH AND INSTALL NEW CONCRETE STAIRWAY, SEE DETAIL 18/C4-03
 - CONTRACTOR SHALL FURNISH AND INSTALL NEW ASPHALT TO CONCRETE TRANSITION, SEE DETAIL 4/C4-01
 - CONTRACTOR SHALL FURNISH AND INSTALL NEW ASPHALT BUTT JOINT, SEE DETAIL 5/C4-02
 - CONTRACTOR SHALL FURNISH AND INSTALL NEW PVC COATED 72"x 96" CHAIN LINK DOUBLE LEAF GATE MATCHING THE EXISTING FENCE IN COLOR AND HEIGHT. SEE DETAIL 19/C4-01
 - CONTRACTOR SHALL FURNISH AND INSTALL NEW SMALL BLOCK RETAINING WALL, SEE DETAIL 16/C4-03
 - CONTRACTOR SHALL FULL DEPTH SAWCUT EXISTING CONCRETE AND REPLACE TO THE NEXT CLOSEST EXISTING JOINT
 - CONTRACTOR SHALL FURNISH AND INSTALL FORM-SURFACES CAST-IN-PLACE BIKE GARDEN BIKE RACK, CONFIGURATION B
 - CONTRACTOR SHALL FURNISH AND INSTALL ADA CONCRETE CURB RAMP
 - CONTRACTOR SHALL FURNISH AND INSTALL CONCRETE ADA ACCESSIBLE PARKING SPACE, SEE DETAIL 6/C4-01
 - FOR UTILITY INFORMATION, SEE CIVIL SITE UTILITY PLAN SHEET C3-01

- CONTRACTOR SHALL FURNISH AND INSTALL NEW GRASS PAVERS, SEE DETAIL 13/C4-04 (ALTERNATE)
- CONTRACTOR SHALL FURNISH AND INSTALL NEW GRASS PAVER NATURAL EDGING, SEE DETAIL 13/C4-04 (ALTERNATE)
- CONTRACTOR SHALL FURNISH AND INSTALL NEW GRASS PAVEMENT TO CONCRETE TRANSITION, SEE DETAIL 13/C4-04 (ALTERNATE)
- CONTRACTOR SHALL FURNISH AND INSTALL NEW DOWNSPOUT COLLECTOR, SEE DETAIL 10/C4-02
- CONTRACTOR SHALL FURNISH AND INSTALL NEW RIGID SCHEDULE 40 OR SDR 35 PVC DOWNSPOUT COLLECTION SYSTEM. FOR PROFILES SEE SHEET C3-05
- CONTRACTOR SHALL FURNISH AND INSTALL NEW RIGID SCHEDULE 40 OR SDR 35 PERFORATED 4" I.D. PVC FOUNDATION DRAIN, SEE DETAIL 1/C4-03
- CONTRACTOR SHALL FURNISH AND INSTALL NEW STORM SEWER SYSTEM PER CITY OF OFALLON STANDARDS AND SPECIFICATIONS, SEE DETAIL 16/C4-02 AND SHEET C4-07. FOR PROFILES SEE SHEET C3-02 AND C3-03
- CONTRACTOR SHALL FURNISH AND INSTALL NEW SANITARY SEWER SYSTEM PER MSD 2007 STANDARDS AND SPECIFICATIONS, SEE DETAIL 16/C4-02 AND DETAIL 8/C4-07. FOR PROFILES SEE SHEET C3-02 AND C3-03
- FOR CONCRETE RETAINING WALL, SEE STRUC. PLANS
- BUILDING OVERHANG
- CONTRACTOR SHALL FURNISH AND INSTALL NEW POOL TRENCH DRAINS, SEE DETAIL 16/C4-04
- CONTRACTOR SHALL FURNISH AND INSTALL NEW TRASH ENCLOSURE, SEE DETAIL 3/C4-01 FOR DUMPSTER PAD, SEE ARCH. PLANS FOR ALL OTHER DETAILS
- CONTRACTOR SHALL FURNISH AND INSTALL NEW TRASH ENCLOSURE, SEE DETAIL 3/C4-01 FOR DUMPSTER PAD, SEE ARCH./STRUC. PLANS FOR ALL OTHER DETAILS
- CONTRACTOR SHALL FURNISH AND INSTALL NEW PVC COATED 72"x 96" CHAIN LINK DOUBLE LEAF GATE MATCHING THE EXISTING FENCE IN HEIGHT AND COLOR. THE GATE SHALL BE HINGED SO THAT IT MAY SWING IN EITHER DIRECTION. SEE DETAIL 18/C4-04
- CONTRACTOR SHALL FURNISH AND INSTALL NEW FOUR-POST WAVE SHADE. SHADE TO BE LOCATED 7'-6" ABOVE POOL DECK TO LOWEST CORNER. LOWEST CORNER SHALL ALWAYS BE PLACED IN THE SOUTHWEST CORNER. CONTRACTOR TO PROVIDE CONNECTION TO THE EQUIPOTENTIAL BONDING GRID OF THE POOL DECK IN ACCORDANCE WITH THE REQUIREMENTS OF THE NATIONAL ELECTRICAL CODE. SEE ARCH. PLANS FOR LOCATIONS AND DETAILS.
- CONTRACTOR SHALL FURNISH AND INSTALL NEW SINGLE POST COOLBRELLA SHADE STRUCTURE. SHADE TO BE LOCATED 8'-0" ABOVE POOL DECK. CONTRACTOR TO PROVIDE CONNECTION TO THE EQUIPOTENTIAL BONDING GRID OF THE POOL DECK IN ACCORDANCE WITH THE REQUIREMENTS OF THE NATIONAL ELECTRICAL CODE. SEE ARCH. PLANS FOR LOCATIONS AND DETAILS.
- CONTRACTOR SHALL FULL DEPTH SAWCUT EXISTING AND PROPOSED ASPHALT PAVEMENT
- SEE STRUC. PLANS FOR FENCE POSTS MOUNTED OVER MECH. ROOM
- CONTRACTOR SHALL FURNISH AND INSTALL NEW VES INLET/OUTLET PROTECTION, SEE DETAIL 16/C4-02
- CONTRACTOR SHALL FURNISH AND INSTALL NEW CONCRETE TOPPING DECK, SEE DETAIL 15/C4-02
- CONTRACTOR SHALL CREATE 6" SUMP AROUND AREA INLET, SEE DETAIL 14/C4-07



DIMENSIONED SITE PLAN NOTES:

- SEE GENERAL NOTES ON SHEET C1-01 AND OFALLON CITY NOTES ON SHEET C4-05 FOR ADDITIONAL INFORMATION.
- UNDERGROUND UTILITIES HAVE BEEN PLOTTED FROM AVAILABLE INFORMATION AND THEREFORE THEIR LOCATIONS MUST BE CONSIDERED APPROXIMATE ONLY. THE VERIFICATION OF THE LOCATION OF ALL UNDERGROUND UTILITIES, EITHER SHOWN OR NOT SHOWN ON THESE PLANS SHALL BE THE RESPONSIBILITY OF THE CONTRACTOR, AND SHALL BE LOCATED PRIOR TO GRADING OR CONSTRUCTION OF IMPROVEMENTS.
- FOR LEGEND, SEE SHEET C1-01 OVERALL CIVIL SITE PLAN.
- WITH THE EXCEPTION OF UNDERGROUND UTILITIES, ITEMS TO BE REMOVED OR ABANDONED ARE NOT SHOWN ON THIS SHEET. FOR REMOVALS, SEE SHEET C0-02.
- ALL DIMENSIONS AND RADII SHOWN ARE TO FACE OF CURB.



WARNING!!!
DO NOT DISTURB FIBER OPTIC LINE. ALL CONTRACTORS SHALL FULLY COORDINATE ANY WORK OVER OR NEAR EXISTING FIBER OPTIC LINE WITH UTILITY COMPANY. IF CONFLICTS ARISE, THE CONTRACTOR SHALL REPORT TO ARCHITECT/ENGINEER PRIOR TO PROCEEDING. DAMAGE TO THIS LINE DURING CONSTRUCTION SHALL SOLELY BE THE CONTRACTOR'S RESPONSIBILITY. LOCATION IS CONSIDERED APPROXIMATE ONLY.

sfs architecture
2100 CENTRAL BLVD SUITE 317 KANSAS CITY, MISSOURI 64108
P: 816.452.1234 F: 816.452.1235 WWW.SFSARCHITECTURE.COM

KdG
Kuhlmann design Group, Inc.
66 Progress Parkway, St. Louis, Missouri 63043
P: 314.434.8898 F: 314.434.8280 kdginc.com

PROFESSIONAL ENGINEER
ANTHONY JAMES GIBSON III
PE-52181067
9/24/17

CIVIC PARK IMPROVEMENTS
O'Fallon Parks and Rec
Civic Park, O'Fallon,
Missouri

MARK	DATE	DESCRIPTION
A	8/16/2017	ADDENDUM #3
B	9/14/2017	ASH #1 - CITY COMMENTS

SFS PROJECT NO: 1682
ISSUED FOR: CONSTRUCTION DOCUMENTS
ISSUE DATE: 07/27/2017
© 2017 SFS ARCHITECTURE

DIMENSIONED SITE PLAN
C1-03