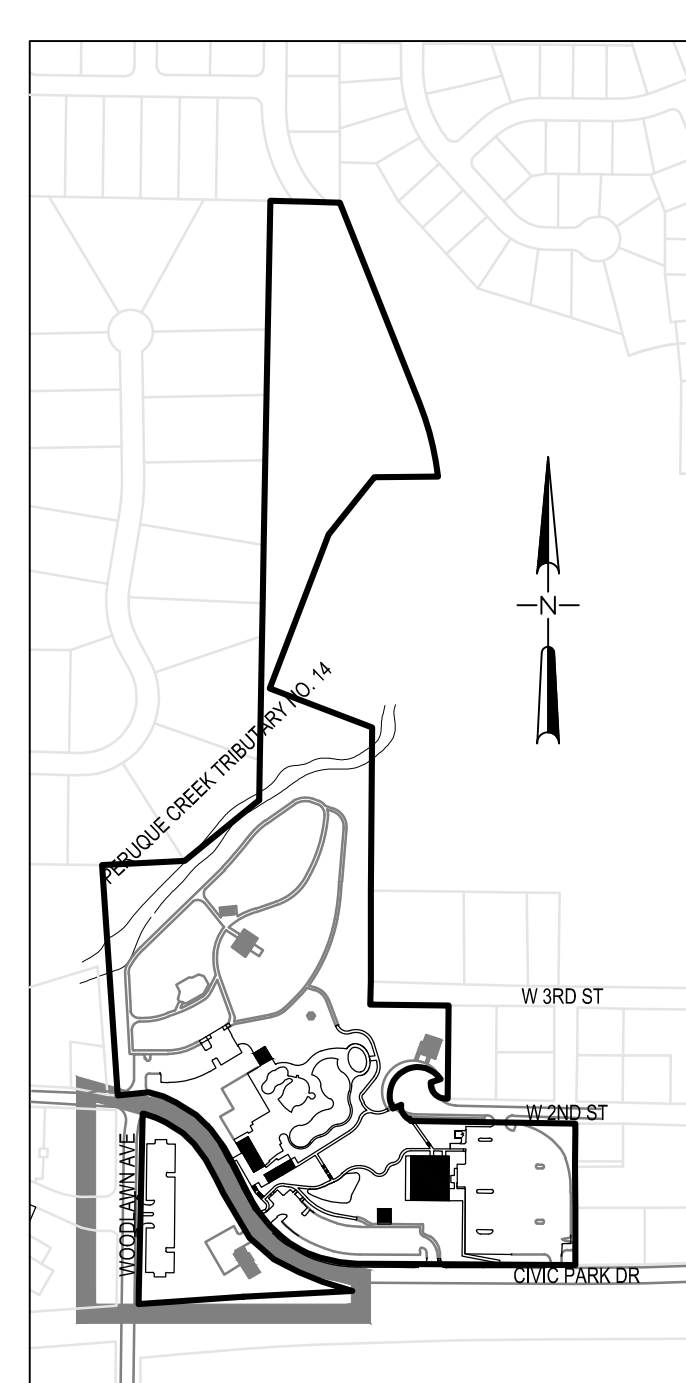
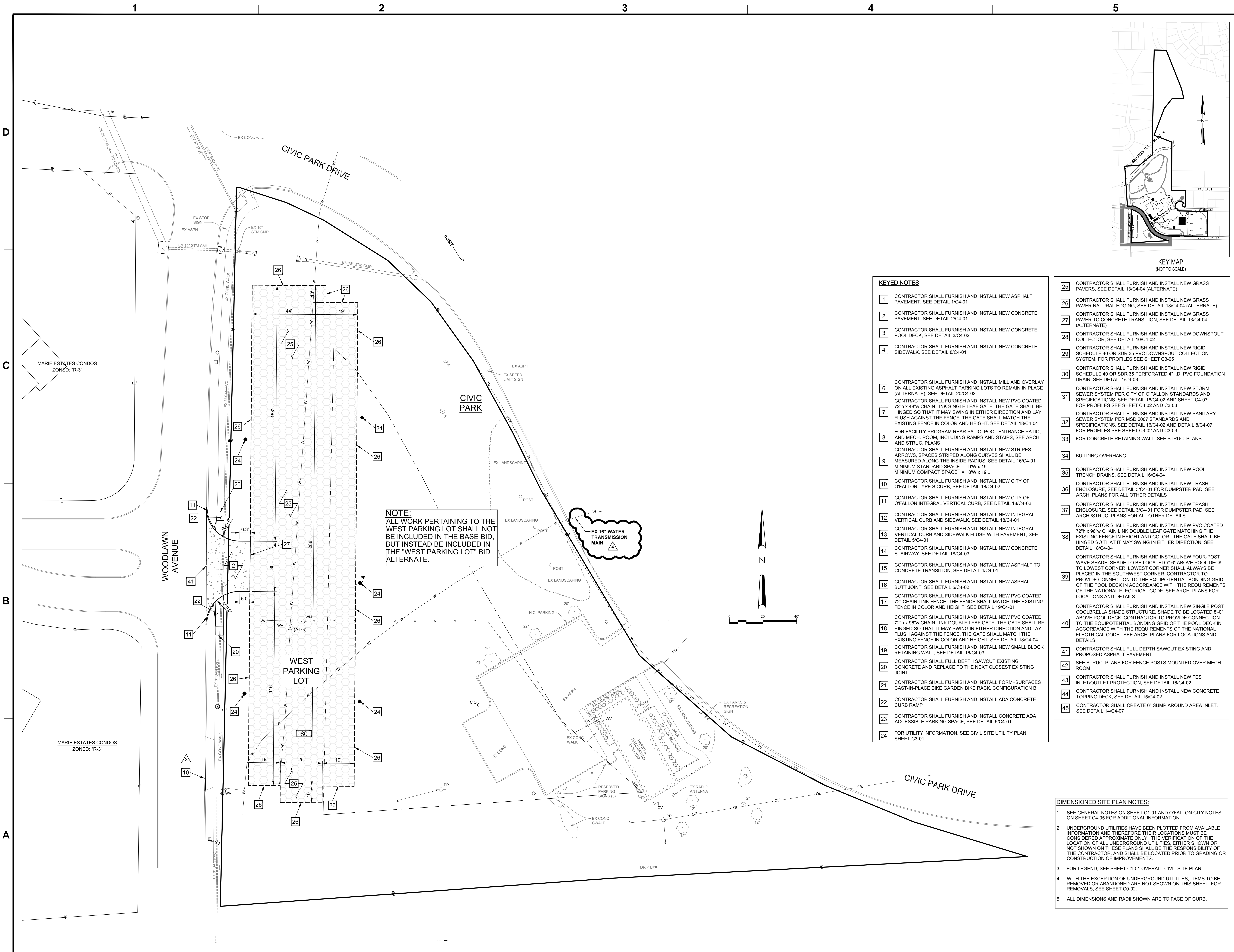


K:\O'FALLON\MO\MO160194\_SFS OF FALLON CIVIC PARK\08 CAD\07 CIVIL\05-DIMENSIONED SITE PLAN.DWG  
© 2017 10:10:37 AM



- KEYED NOTES**
- CONTRACTOR SHALL FURNISH AND INSTALL NEW ASPHALT PAVEMENT. SEE DETAIL 1/C4-01
  - CONTRACTOR SHALL FURNISH AND INSTALL NEW CONCRETE PAVEMENT. SEE DETAIL 2/C4-01
  - CONTRACTOR SHALL FURNISH AND INSTALL NEW CONCRETE POOL DECK. SEE DETAIL 3/C4-02
  - CONTRACTOR SHALL FURNISH AND INSTALL NEW CONCRETE SIDEWALK. SEE DETAIL 8/C4-01
  - CONTRACTOR SHALL FURNISH AND INSTALL MILL AND OVERLAY ON ALL EXISTING ASPHALT PARKING LOTS TO REMAIN IN PLACE (ALTERNATE). SEE DETAIL 20/C4-02
  - CONTRACTOR SHALL FURNISH AND INSTALL NEW PVC COATED 72" x 48" CHAIN LINK SINGLE LEAF GATE. THE GATE SHALL BE HINGED SO THAT IT MAY SWING IN EITHER DIRECTION AND LAY FLUSH AGAINST THE FENCE. THE GATE SHALL MATCH THE EXISTING FENCE IN COLOR AND HEIGHT. SEE DETAIL 18/C4-04
  - FOR FACILITY PROGRAM REAR PATIO, POOL ENTRANCE PATIO, AND MECH. ROOM, INCLUDING RAMPS AND STAIRS. SEE ARCH. AND STRUC. PLANS
  - CONTRACTOR SHALL FURNISH AND INSTALL NEW STRIPES, ARROWS, SPACES STRIPED ALONG CURVES SHALL BE MEASURED ALONG THE INSIDE RADIUS. SEE DETAIL 16/C4-01  
MINIMUM STANDARD SPACE = 8'W x 19'  
MINIMUM COMPACT SPACE = 8'W x 19'
  - CONTRACTOR SHALL FURNISH AND INSTALL NEW CITY OF O'FALLON TYPE S CURB. SEE DETAIL 18/C4-02
  - CONTRACTOR SHALL FURNISH AND INSTALL NEW CITY OF O'FALLON INTEGRAL VERTICAL CURB. SEE DETAIL 18/C4-02
  - CONTRACTOR SHALL FURNISH AND INSTALL NEW INTEGRAL VERTICAL CURB AND SIDEWALK. SEE DETAIL 18/C4-01
  - CONTRACTOR SHALL FURNISH AND INSTALL NEW INTEGRAL VERTICAL CURB AND SIDEWALK FLUSH WITH PAVEMENT. SEE DETAIL 5/C4-01
  - CONTRACTOR SHALL FURNISH AND INSTALL NEW CONCRETE STAIRWAY. SEE DETAIL 18/C4-03
  - CONTRACTOR SHALL FURNISH AND INSTALL NEW ASPHALT TO CONCRETE TRANSITION. SEE DETAIL 4/C4-01
  - CONTRACTOR SHALL FURNISH AND INSTALL NEW ASPHALT BUTT JOINT. SEE DETAIL 5/C4-02
  - CONTRACTOR SHALL FURNISH AND INSTALL NEW PVC COATED 72" CHAIN LINK FENCE. THE FENCE SHALL MATCH THE EXISTING FENCE IN COLOR AND HEIGHT. SEE DETAIL 19/C4-01
  - CONTRACTOR SHALL FURNISH AND INSTALL NEW PVC COATED 72" x 96" CHAIN LINK DOUBLE LEAF GATE. THE GATE SHALL BE HINGED SO THAT IT MAY SWING IN EITHER DIRECTION AND LAY FLUSH AGAINST THE FENCE. THE GATE SHALL MATCH THE EXISTING FENCE IN COLOR AND HEIGHT. SEE DETAIL 18/C4-04
  - CONTRACTOR SHALL FURNISH AND INSTALL NEW SMALL BLOCK RETAINING WALL. SEE DETAIL 16/C4-03
  - CONTRACTOR SHALL FULL DEPTH SAWCUT EXISTING CONCRETE AND REPLACE TO THE NEXT CLOSEST EXISTING JOINT
  - CONTRACTOR SHALL FURNISH AND INSTALL FORM-SURFACES CAST-IN-PLACE BIKE GARDEN BIKE RACK, CONFIGURATION B
  - CONTRACTOR SHALL FURNISH AND INSTALL ADA CONCRETE CURB RAMP
  - CONTRACTOR SHALL FURNISH AND INSTALL CONCRETE ADA ACCESSIBLE PARKING SPACE. SEE DETAIL 6/C4-01
  - FOR UTILITY INFORMATION, SEE CIVIL SITE UTILITY PLAN SHEET C3-01

- CONTRACTOR SHALL FURNISH AND INSTALL NEW GRASS PAVERS. SEE DETAIL 13/C4-04 (ALTERNATE)
- CONTRACTOR SHALL FURNISH AND INSTALL NEW GRASS PAVER NATURAL EDGING. SEE DETAIL 13/C4-04 (ALTERNATE)
- CONTRACTOR SHALL FURNISH AND INSTALL NEW GRASS PAVER TO CONCRETE TRANSITION. SEE DETAIL 13/C4-04 (ALTERNATE)
- CONTRACTOR SHALL FURNISH AND INSTALL NEW DOWNSPOUT COLLECTOR. SEE DETAIL 10/C4-02
- CONTRACTOR SHALL FURNISH AND INSTALL NEW RIGID SCHEDULE 40 OR SDR 35 PVC DOWNSPOUT COLLECTION SYSTEM. FOR PROFILES SEE SHEET C3-05
- CONTRACTOR SHALL FURNISH AND INSTALL NEW RIGID SCHEDULE 40 OR SDR 35 PERFORATED 4" I.D. PVC FOUNDATION DRAIN. SEE DETAIL 1/C4-03
- CONTRACTOR SHALL FURNISH AND INSTALL NEW STORM SEWER SYSTEM PER CITY OF O'FALLON STANDARDS AND SPECIFICATIONS. SEE DETAIL 16/C4-02 AND SHEET C4-07. FOR PROFILES SEE SHEET C3-02 AND C3-03
- CONTRACTOR SHALL FURNISH AND INSTALL NEW SANITARY SEWER SYSTEM PER MSD 2007 STANDARDS AND SPECIFICATIONS. SEE DETAIL 16/C4-02 AND DETAIL 8/C4-07. FOR PROFILES SEE SHEET C3-02 AND C3-03
- FOR CONCRETE RETAINING WALL. SEE STRUC. PLANS
- BUILDING OVERHANG
- CONTRACTOR SHALL FURNISH AND INSTALL NEW POOL TRENCH DRAINS. SEE DETAIL 16/C4-04
- CONTRACTOR SHALL FURNISH AND INSTALL NEW TRASH ENCLOSURE. SEE DETAIL 3/C4-01 FOR DUMPSTER PAD. SEE ARCH. PLANS FOR ALL OTHER DETAILS
- CONTRACTOR SHALL FURNISH AND INSTALL NEW TRASH ENCLOSURE. SEE DETAIL 3/C4-01 FOR DUMPSTER PAD. SEE ARCH./STRUC. PLANS FOR ALL OTHER DETAILS
- CONTRACTOR SHALL FURNISH AND INSTALL NEW PVC COATED 72" x 96" CHAIN LINK DOUBLE LEAF GATE MATCHING THE EXISTING FENCE IN HEIGHT AND COLOR. THE GATE SHALL BE HINGED SO THAT IT MAY SWING IN EITHER DIRECTION. SEE DETAIL 18/C4-04
- CONTRACTOR SHALL FURNISH AND INSTALL NEW FOUR-POST WAVE SHADE. SHADE TO BE LOCATED 7'-6" ABOVE POOL DECK TO LOWEST CORNER. LOWEST CORNER SHALL ALWAYS BE PLACED IN THE SOUTHWEST CORNER. CONTRACTOR TO PROVIDE CONNECTION TO THE EQUIPOTENTIAL BONDING GRID OF THE POOL DECK IN ACCORDANCE WITH THE REQUIREMENTS OF THE NATIONAL ELECTRICAL CODE. SEE ARCH. PLANS FOR LOCATIONS AND DETAILS.
- CONTRACTOR SHALL FURNISH AND INSTALL NEW SINGLE POST COOLBREA SHADE STRUCTURE. SHADE TO BE LOCATED 8'-0" ABOVE POOL DECK. CONTRACTOR TO PROVIDE CONNECTION TO THE EQUIPOTENTIAL BONDING GRID OF THE POOL DECK IN ACCORDANCE WITH THE REQUIREMENTS OF THE NATIONAL ELECTRICAL CODE. SEE ARCH. PLANS FOR LOCATIONS AND DETAILS.
- CONTRACTOR SHALL FULL DEPTH SAWCUT EXISTING AND PROPOSED ASPHALT PAVEMENT
- SEE STRUC. PLANS FOR FENCE POSTS MOUNTED OVER MECH. ROOM
- CONTRACTOR SHALL FURNISH AND INSTALL NEW FES INLET/OUTLET PROTECTION. SEE DETAIL 16/C4-02
- CONTRACTOR SHALL FURNISH AND INSTALL NEW CONCRETE TOPPING DECK. SEE DETAIL 15/C4-02
- CONTRACTOR SHALL CREATE 6" SUMP AROUND AREA INLET. SEE DETAIL 14/C4-07

- DIMENSIONED SITE PLAN NOTES:**
- SEE GENERAL NOTES ON SHEET C1-01 AND O'FALLON CITY NOTES ON SHEET C4-05 FOR ADDITIONAL INFORMATION.
  - UNDERGROUND UTILITIES HAVE BEEN PLOTTED FROM AVAILABLE INFORMATION AND THEREFORE THEIR LOCATIONS MUST BE CONSIDERED APPROXIMATE ONLY. THE VERIFICATION OF THE LOCATION OF ALL UNDERGROUND UTILITIES, EITHER SHOWN OR NOT SHOWN ON THESE PLANS SHALL BE THE RESPONSIBILITY OF THE CONTRACTOR AND SHALL BE LOCATED PRIOR TO GRADING OR CONSTRUCTION OF IMPROVEMENTS.
  - FOR LEGEND, SEE SHEET C1-01 OVERALL CIVIL SITE PLAN.
  - WITH THE EXCEPTION OF UNDERGROUND UTILITIES, ITEMS TO BE REMOVED OR ABANDONED ARE NOT SHOWN ON THIS SHEET. FOR REMOVALS, SEE SHEET C0-02.
  - ALL DIMENSIONS AND RADII SHOWN ARE TO FACE OF CURB.

**sfs architecture**  
2100 Central St. Suite 317, Kansas City, MO 64108  
P: 816.454.8898 F: 816.454.8280 kdg@sfsarch.com

**KdG**  
Kuhlmann design Group, Inc.  
66 Progress Parkway, St. Louis, Missouri 63043  
t: 314.434.8898 f: 314.434.8280 kdginc.com

ANTHONY JAMES GIRONDO III  
PE-20071067  
9/24/17

**CIVIC PARK IMPROVEMENTS**

O'Fallon Parks and Rec  
Civic Park, O'Fallon,  
Missouri

MARK DATE DESCRIPTION  
 1 8/16/2017 ADDENDUM #3  
 2 9/14/2017 ASI #1 - CITY COMMENTS

SFS PROJECT NO: 1682  
 ISSUED FOR: CONSTRUCTION DOCUMENTS  
 ISSUE DATE: 07/27/2017  
 © 2017 SFS ARCHITECTURE

**DIMENSIONED SITE PLAN**

**C1-04**