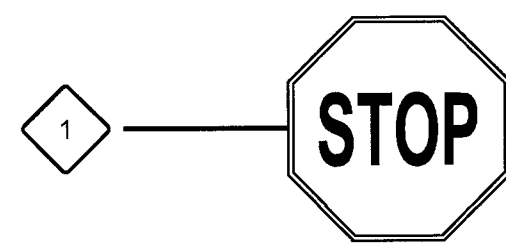


SIGN LEGEND

SIGN NOTE:

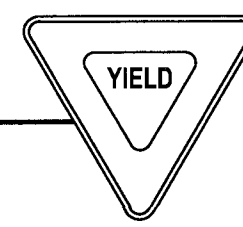
1. ALL SIGNS SHALL COMPLY WITH THE CURRENT EDITION OF THE MANUAL ON UNIFORM TRAFFIC CONTROL DEVICE (MUTCD).
2. ONE SET OF STREET NAME SIGNS IS NEEDED PER INTERSECTION UNLESS A STREET CHANGES NAME THRU THE INTERSECTION.



R1-1
30"X30"



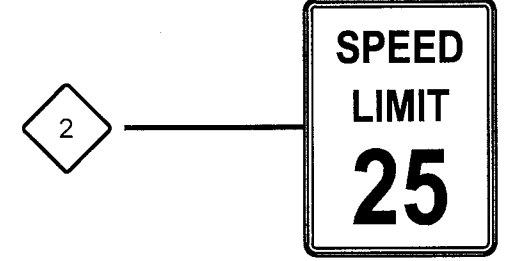
R7-13
12"X18"



R1-2
36"X36"X36"



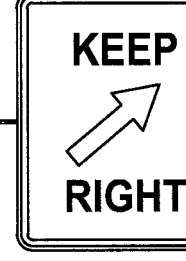
TEMPORARY BARRICADE AND
TEMPORARY END OF PAVEMENT
SIGNAGE FOR PHASING



R2-1
25 MPH LIMIT
24"X30"



W14-2
30"X30"



R4-7BR
18"X24"

TEMPORARY END OF PAVEMENT SIGNAGE:

TEMPORARY END OF PAVEMENT SIGNAGE SHALL BE USED IN ALL LOCATIONS WHERE PAVEMENT ENDS DUE TO CONSTRUCTION PHASING.

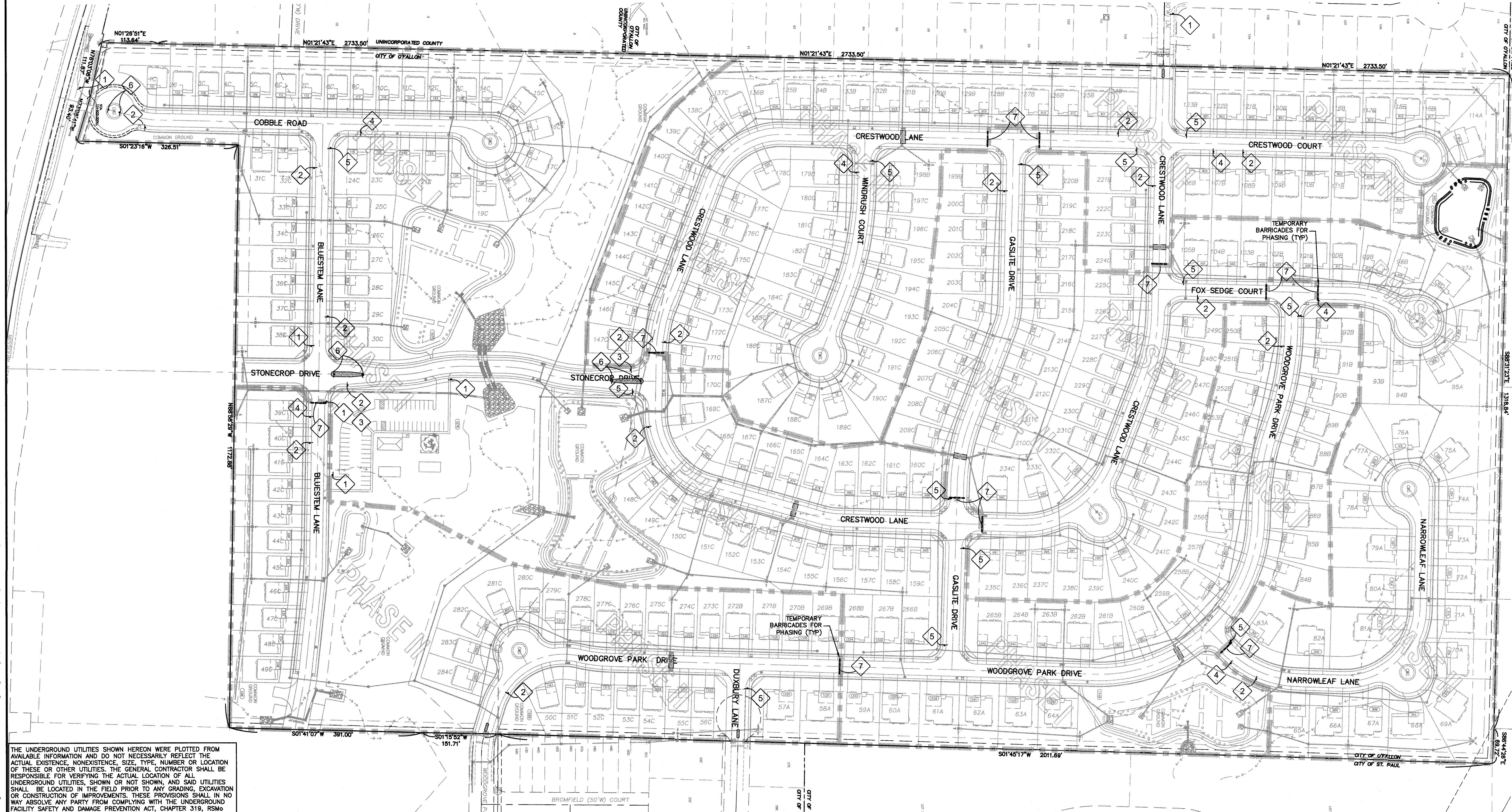
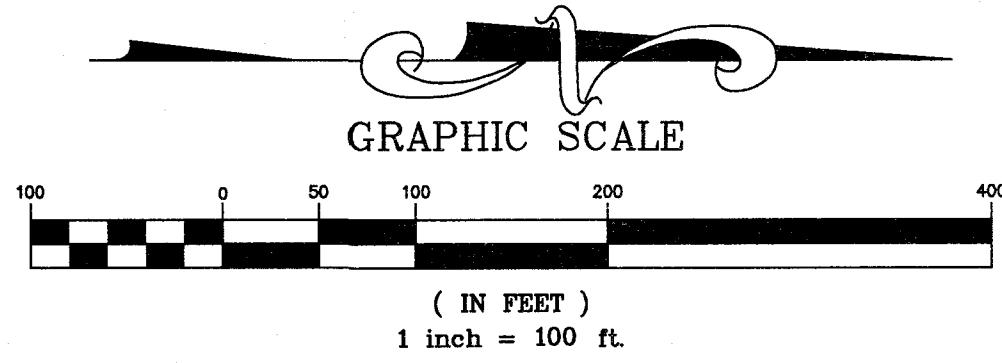
SIGN MOUNTING NOTE:

ALL STREET NAME SIGNS SHALL BE MOUNTED ON THE SAME POLE AS THE STOP AND YIELD SIGNS.

INTERIM CONSTRUCTION TRAFFIC CONTROL

ALL TRAFFIC CONTROL AND DEVICES SHALL BE PER THE 2009 EDITION OF THE MANUAL FOR UNIFORM TRAFFIC CONTROL DEVICES FOR STREETS AND HIGHWAYS.

ISSUE	REMARKS/DATE
1	3-21-17 INITIAL SUBMITTAL
2	6-6-17 REVISED PER CITY COMMENTS
3	7-20-17 REVISED PER CITY COMMENTS
4	8-7-17 APPROVAL

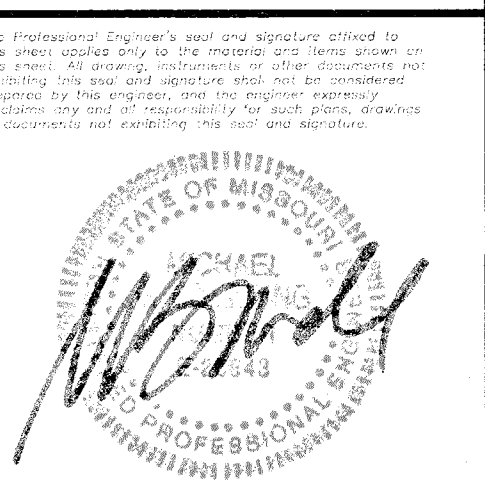


THE UNDERGROUND UTILITIES SHOWN HEREON WERE PLOTTED FROM AVAILABLE INFORMATION AND DO NOT NECESSARILY REFLECT THE ACTUAL EXISTENCE, NONEXISTENCE, SIZE, TYPE, NUMBER OR LOCATION OF THESE OR OTHER UTILITIES. THE GENERAL CONTRACTOR SHALL BE RESPONSIBLE FOR VERIFYING THE ACTUAL LOCATION OF ALL UNDERGROUND UTILITIES, SHOWN OR NOT SHOWN, AND SAID UTILITIES SHALL BE LOCATED IN THE FIELD PRIOR TO ANY GRADING, EXCAVATION OR CONSTRUCTION OF IMPROVEMENTS. THESE PROVISIONS SHALL IN NO WAY ABSOLVE ANY PARTY FROM COMPLYING WITH THE UNDERGROUND FACILITY SAFETY AND DAMAGE PREVENTION ACT, CHAPTER 319, RSMo

PROJECT TITLE

COBBLESTONE CROSSING
OF FALLON, MISSOURI

THE STERLING CO.
ENGINEERS & SURVEYORS
5055 New Baumgartner Road
St. Louis, Missouri 63129
Ph 314-487-0440 Fax 314-487-8844
www.sterling-eng-survey.com
Corporate Certificate of Authority #001348



Date: 8/7/2017
Michael G. Boering
License No. MO E-28643
Civil Engineer

McBRIDE HYLAND GREEN, LLC
16091 SWINGLEY RIDGE ROAD, SUITE 300
CHESTERFIELD, MISSOURI 63017
Ph 636-537-2000
Fax 636-537-2546
www.mcbriدهomes.com

TRAFFIC CONTROL PLAN

P+Z No. 29-16.01
City No.
Date: Aug. 7, 2017
Job No. 16-08-239

Page No.
13.1

IMP