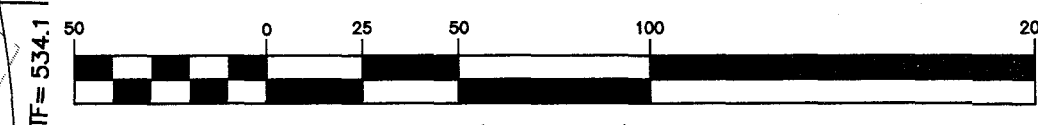


THE UNDERGROUND UTILITIES SHOWN HEREON WERE PLOTTED FROM AVAILABLE INFORMATION AND DO NOT NECESSARILY REFLECT THE ACTUAL EXISTENCE, NONEXISTENCE, SIZE, TYPE, NUMBER OR LOCATION OF THESE OR OTHER UTILITIES. THE GENERAL CONTRACTOR SHALL BE RESPONSIBLE FOR VERIFYING THE ACTUAL LOCATION OF ALL UNDERGROUND UTILITIES, SHOWN OR NOT SHOWN, AND SAID UTILITIES SHALL BE LOCATED IN THE FIELD PRIOR TO ANY GRADING, EXCAVATION OR CONSTRUCTION OF IMPROVEMENTS. THESE PROVISIONS SHALL IN NO WAY ABSOLVE ANY PARTY FROM COMPLYING WITH THE UNDERGROUND FACILITY SAFETY AND DAMAGE PREVENTION ACT, CHAPTER 319, RSMo.

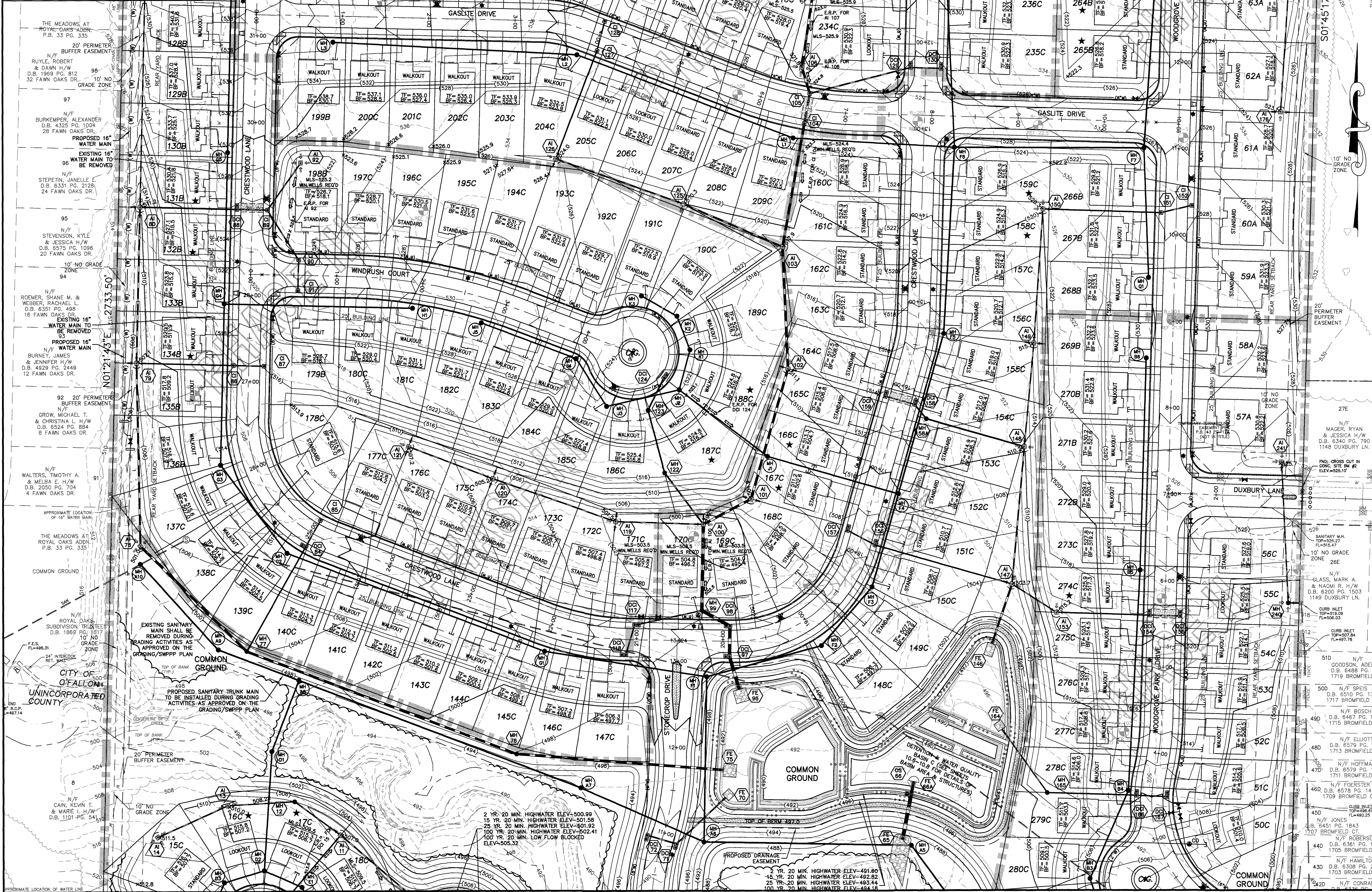
NOTES:

1. MSL = MINIMUM LOW SILL ELEVATION
2. ERP = EMERGENCY RELIEF PATH - SEE DET-9
3. WINDOW WELLS REQ'D - ALL BASEMENT WINDOWS ON THESE LOTS SHALL HAVE WINDOW WELLS WITH THE TOP OF WELL ELEVATION BEING HIGHER THAN THE MSL WHEN INDICATED.
4. ALL REAR YARD SWALES SHALL MAINTAIN A MINIMUM 2% SLOPE.
5. ON A CORNER LOT NOTHING SHALL BE ERRECTED, PLACED, PLANTED OR ALLOWED TO GROW IN SUCH A MANNER AS TO MATERIALLY IMPEDE VISION BETWEEN A HEIGHT OF THREE (3) AND FIFTEEN (15) FEET ABOVE THE GRADES WITHIN THE SIGHT TRIANGLE AREA AS SHOWN ON THESE PLANS. ADDITIONALLY, NOTHING SHALL BE ERRECTED, PLACED, PLANTED OR ALLOWED TO GROW IN A MANNER TO MATERIALLY IMPEDE THE LINE OF SIGHT NECESSARY FOR THE SAFE TRAVEL ALONG PUBLIC ROADWAYS.
6. TEMPORARY END OF PAVEMENT SIGNAGE SHALL BE USED IN ALL LOCATIONS WHERE PAVEMENT ENDS DUE TO CONSTRUCTION PHASING.
7. * - DENOTES POSSIBLE EXTENDED FOUNDATION REQUIRED FOR HOUSE DUE TO SEWER ZONE OF INFLUENCE SEE SHEETS 14.1 - 14.4 FOR ADDITIONAL INFORMATION.

GRAPHIC SCALE



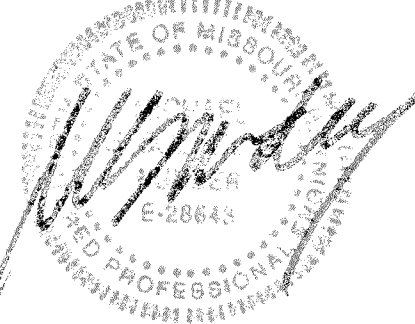
- ISSUE REMARKS/DATE**
- 1 3-21-17 INITIAL SUBMITTAL
 - 2 6-6-17 REVISED PER CITY COMMENTS
 - 3 7-20-17 REVISED PER CITY COMMENTS
 - 4 8-7-17 APPROVAL



PROJECT TITLE

COBBLESTONE CROSSING

THE STERLING CO.
ENGINEERS & SURVEYORS
5055 New Baumgartner Road
St. Louis, Missouri 63112
Ph: 314-877-3100
www.sterling-eng.com
Corporate Certificate of Authority #001948



Date: 8/7/2017
Michael G. Boering
License No. MO E-28643
Civil Engineer

McBRIDE HYLAND GREEN, LLC
16091 SWINGLEY RIDGE ROAD, SUITE 300
CHESTERFIELD, MISSOURI 63017
Ph: 636-537-2000
Fax: 636-537-2546
www.mcbridehomes.com

GRADING PLAN

P+Z No. 29-16.01
City No.
Date: Aug 7, 2017
Job No. 16-08-239
Page No. **3.2**