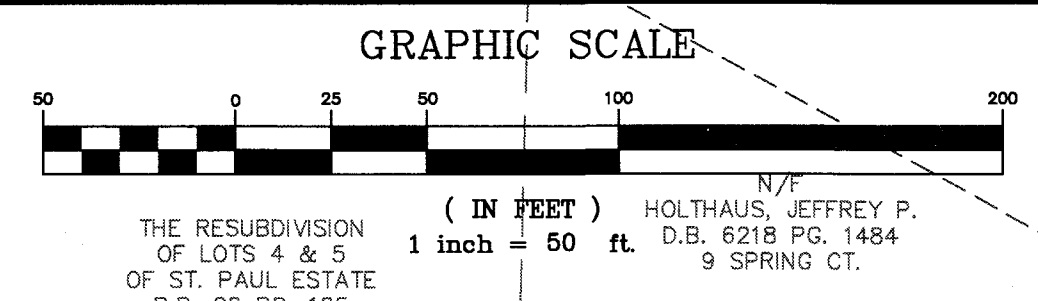
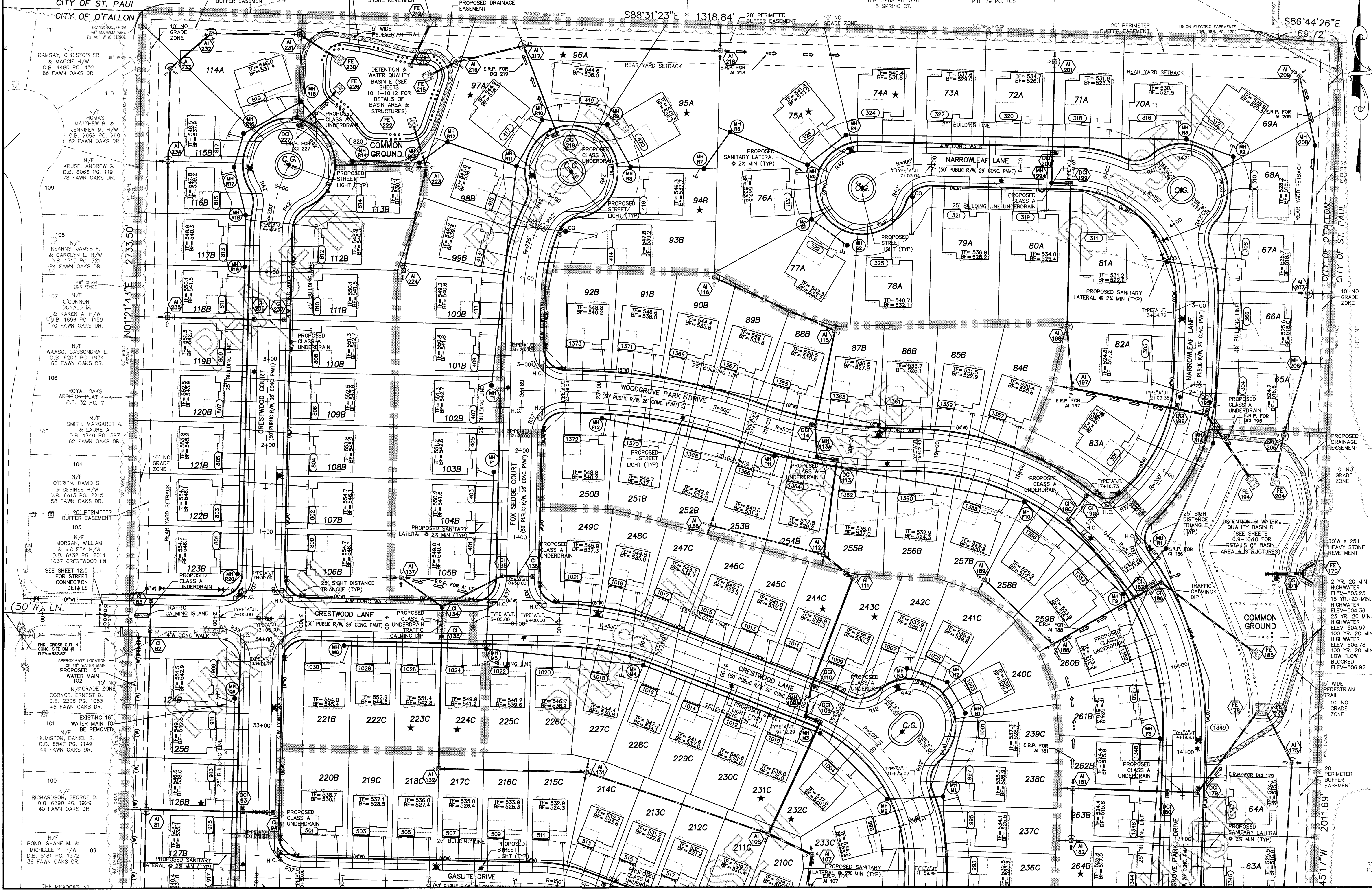


THE UNDERGROUND UTILITIES SHOWN HEREON WERE PLOTTED FROM AVAILABLE INFORMATION AND DO NOT NECESSARILY REFLECT THE ACTUAL EXISTENCE, NONEXISTENCE, SIZE, TYPE, NUMBER OR LOCATION OF THESE OR OTHER UTILITIES. THE GENERAL CONTRACTOR SHALL BE RESPONSIBLE FOR VERIFYING THE ACTUAL LOCATION OF ALL UNDERGROUND UTILITIES, SHOWN OR NOT SHOWN, AND SAID UTILITIES SHALL BE LOCATED IN THE FIELD PRIOR TO ANY GRADING, EXCAVATION OR CONSTRUCTION OF IMPROVEMENTS. THESE PROVISIONS SHALL IN NO WAY ABSOLVE ANY PARTY FROM COMPLYING WITH THE UNDERGROUND FACILITY SAFETY AND DAMAGE PREVENTION ACT, CHAPTER 319, RSMo

NOTES:
 1. ON A CORNER LOT NOTHING SHALL BE ERRECTED, PLACED OR ALLOWED TO GROW IN SUCH A MANNER AS TO MATERIALLY IMPEDE VISION BETWEEN A HEIGHT OF THREE (3) AND FIFTEEN (15) FEET ABOVE THE GRADES WITHIN THE SIGHT TRIANGLE AREA AS SHOWN ON THESE PLANS. ADDITIONALLY, NOTHING SHALL BE ERRECTED, PLACED, PLANTED OR ALLOWED TO GROW IN A MANNER TO MATERIALLY IMPEDE THE LINE OF SIGHT NECESSARY FOR THE SAFE TRAVEL ALONG PUBLIC ROADWAYS.
 2. TEMPORARY END OF PAVEMENT SIGNAGE SHALL BE USED IN ALL LOCATIONS WHERE PAVEMENT ENDS DUE TO CONSTRUCTION PHASING.
 3. * DENOTES POSSIBLE EXTENDED FOUNDATION REQUIRED FOR HOUSE DUE TO SEWER ZONE OF INFLUENCE SEE SHEETS 14.1 - 14.4 FOR ADDITIONAL INFORMATION.



ISSUE REMARKS/DATE
 1 3-21-17 INITIAL SUBMITTAL
 2 6-6-17 REVISED PER CITY COMMENTS
 3 7-20-17 REVISED PER CITY COMMENTS
 4 8-7-17 APPROVAL



PROJECT TITLE
COBBLESTONE CROSSING
 OTTAWA, MISSOURI

THE **STERLING** CO.
 ENGINEERS & SURVEYORS
 5065 New Baumgartner Road
 St. Louis, Missouri 63129
 Ph 314-487-8944
 www.sterling-eng-srv.com
 Corporate Certificate of Authority #001348

Date: 8/7/2017
 Michael G. Boerding
 License No. MO E-28643
 Civil Engineer

McBRIDE HIGHLAND GREEN, LLC
 16091 SWINGLEY RIDGE ROAD, SUITE 300
 CHESTERFIELD, MISSOURI 63017
 Ph: 636-537-2000
 Fax: 636-537-2546
 www.mcbridehomes.com

P+Z No. 29-16.01
 City No.
 Date: Aug. 7, 2017
 Job No. 16-08-239
 Page No.
4.3
 IMP

Drawing name: V:\1608239-Dames Park\Drawings\Engineering\Improvements\29-16.01-IMP.dwg Plotted on: Aug 07, 2017 - 2:56pm Plotted by: mlinier

SEE SHEET 4.2 FOR CONTINUATION

"FINAL PLAN" Approval Date: January 26, 2017