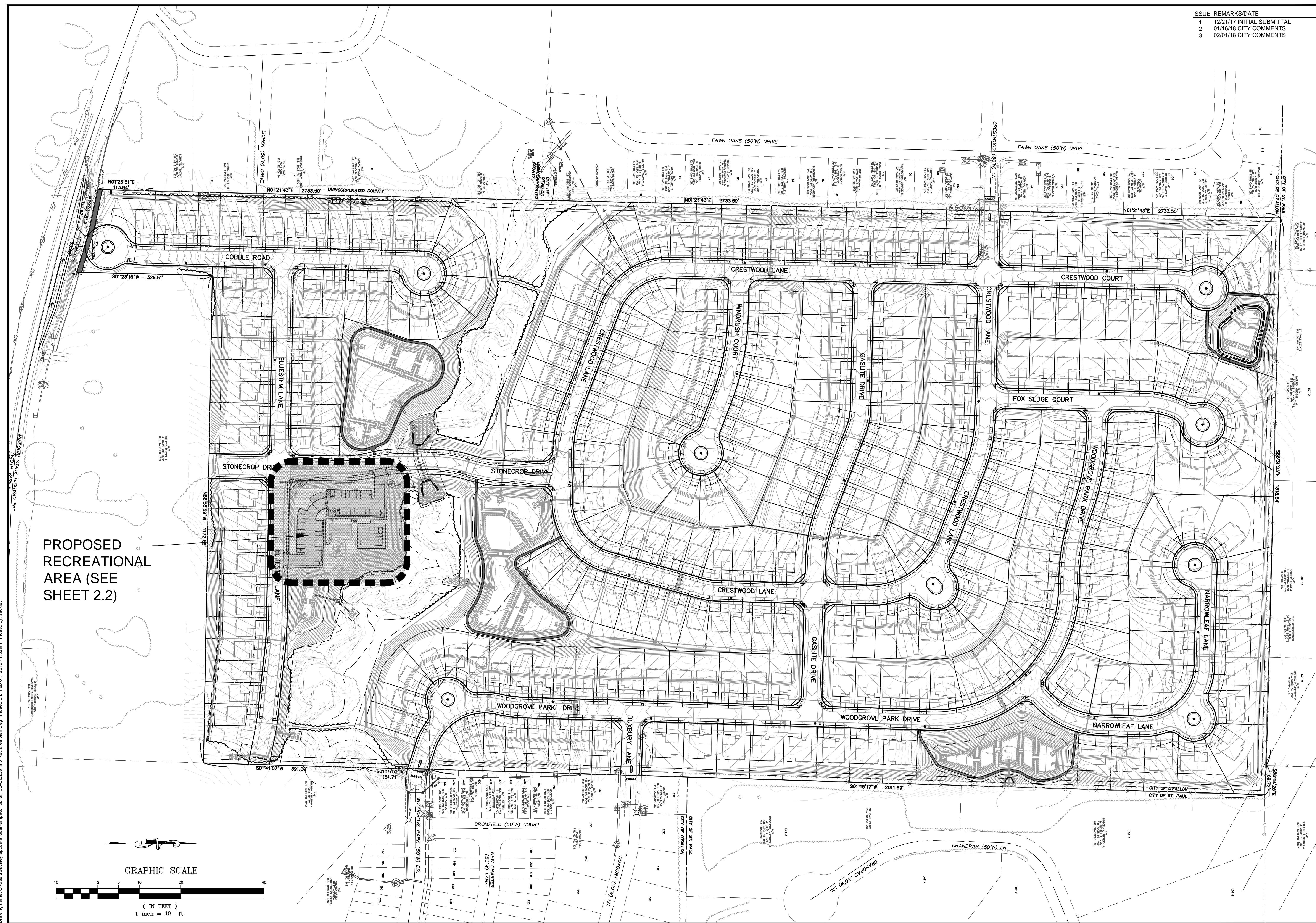
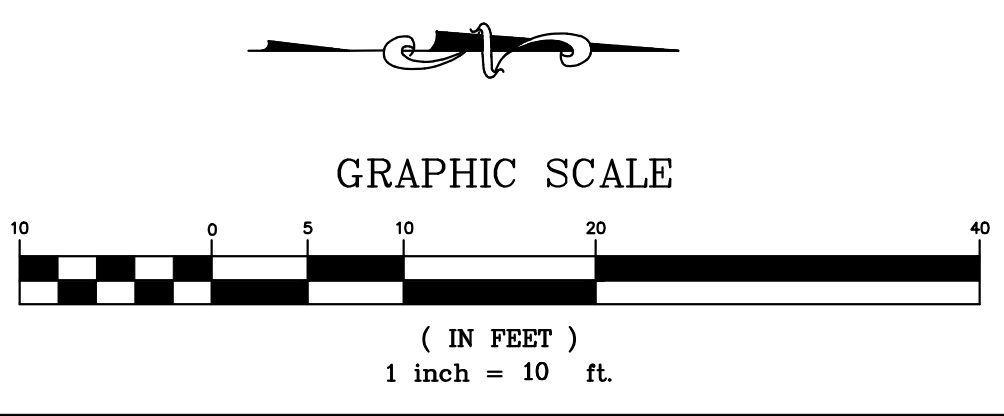


ISSUE	REMARKS/DATE
1	12/21/17 INITIAL SUBMITTAL
2	01/16/18 CITY COMMENTS
3	02/01/18 CITY COMMENTS



PROPOSED RECREATIONAL AREA (SEE SHEET 2.2)



PROJECT TITLE

COBBLESTONE CROSSING
OFALLON, MISSOURI

THE STERLING CO.
ENGINEERS & SURVEYORS
5055 New Baumgartner Road
St. Louis, Missouri 63129
Ph 314-487-0440 Fax 314-487-8944
www.sterling-eng-sur.com
Corporate Certificate of Authority #001348



Date: 02/01/18
Sean M. Ackley
License No. PE-2009018679
Civil Engineer

McBRIDE HYLAND GREEN, LLC
16081 SWINGLEY RIDGE ROAD, SUITE 300
CHESTERFIELD, MISSOURI 63017
Ph. 636-537-2000
Fax 636-537-2546
www.mcbridehomes.com

OVERALL PLAN

P+Z No. 29-16.01
City No.
Date: Feb. 1, 2018
Job No. 16-08-239
Page No.

2.1

SITE

Drawing name: C:\Users\stakley\appdata\local\temp\AsPublish_53488239.rvt; Rec area plan.dwg; Printed on: Feb 01, 2018 - 7:39am; Printed by: stakley