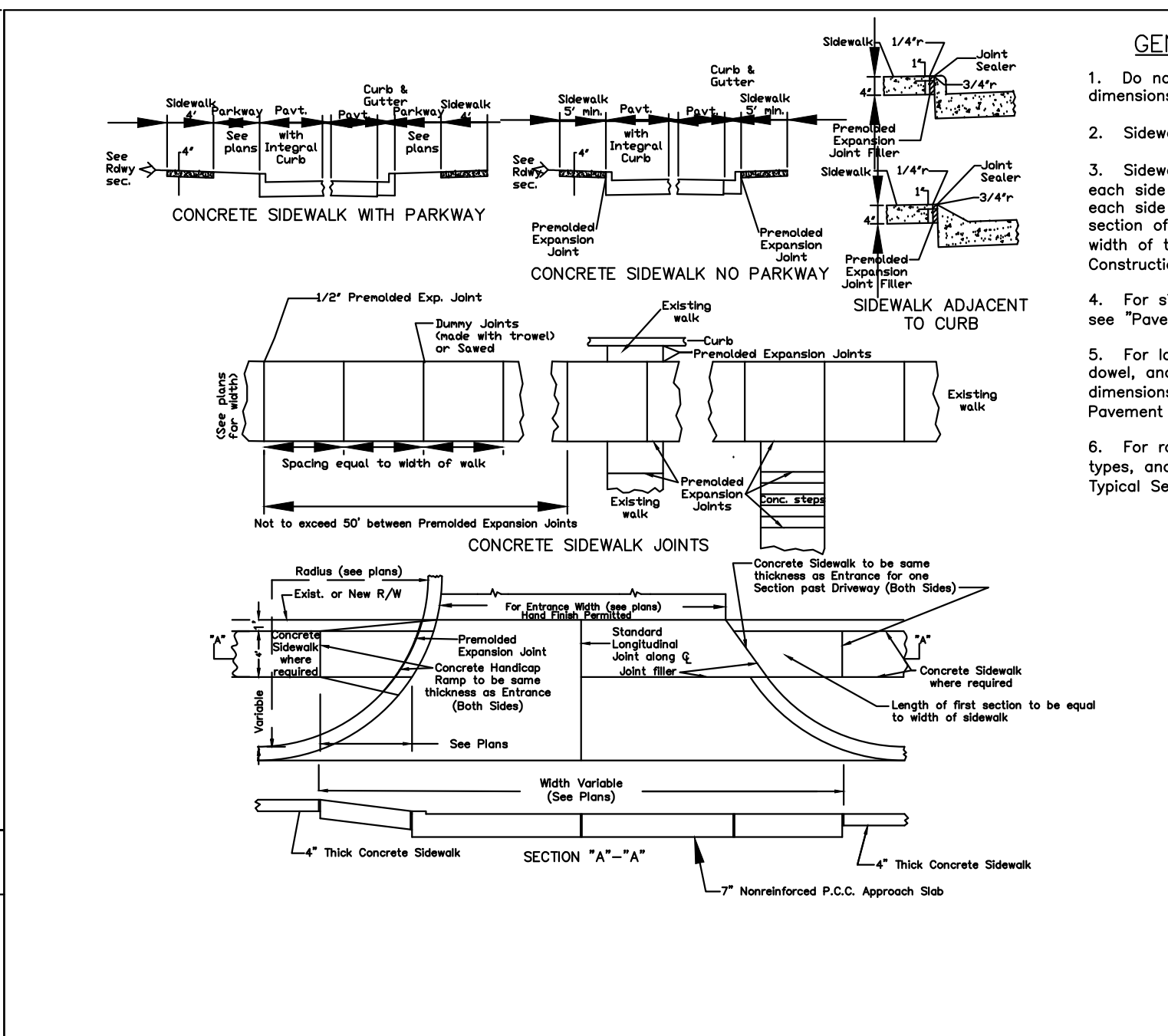


- GENERAL NOTES**
- Do not scale drawings. Follow dimensions.
 - Sidewalks and sidewalk curb ramps shall be constructed in accordance with these details and the current approved American with Disabilities Act Accessibility Guidelines (ADAAG).
 - Minimum sidewalk width along 6" vertical curb shall be 5 feet. Minimum sidewalk width along 3' rolled curb shall be 4 feet.
 - Maximum sidewalk cross slope 0.02%/ft.
 - All sidewalk sections shall be 4" thick, except where indicated as 7" thick by shaded portions shown on details.
 - Where curb ramp meets pavement, Bulboses will not be permitted.
 - If integral concrete curb is constructed, strike a dummy joint across bottom of ramp at curb line. If concrete curb is cast-in-place, block out pavement to provide full depth curb cross ramp from outer point of curb taper to outer point of curb taper.
 - For pavement longitudinal and transverse joints and dowel and tie bar requirements and dimensions, refer to the Pavement Construction Details for Joints and Cuts.
 - For roadway cross slopes, pavement types, and thicknesses, refer to "Standard Typical Sections".
 - The intersection of two sidewalks or the intersection of a sidewalk and a driveway may serve as a wheelchair passing space on sidewalks less than 5 feet wide.
 - All curb ramps shall have a detectable warning complying with Americans with Disabilities Act Accessibility Guidelines (ADAAG).
 - All ramps must line up with the corresponding ramp on the other side of the street or intersection.
 - All truncated domes shall run parallel to the road that it's crossing.
 - Truncated domes shall not be stamped and will be a ADA approved product.



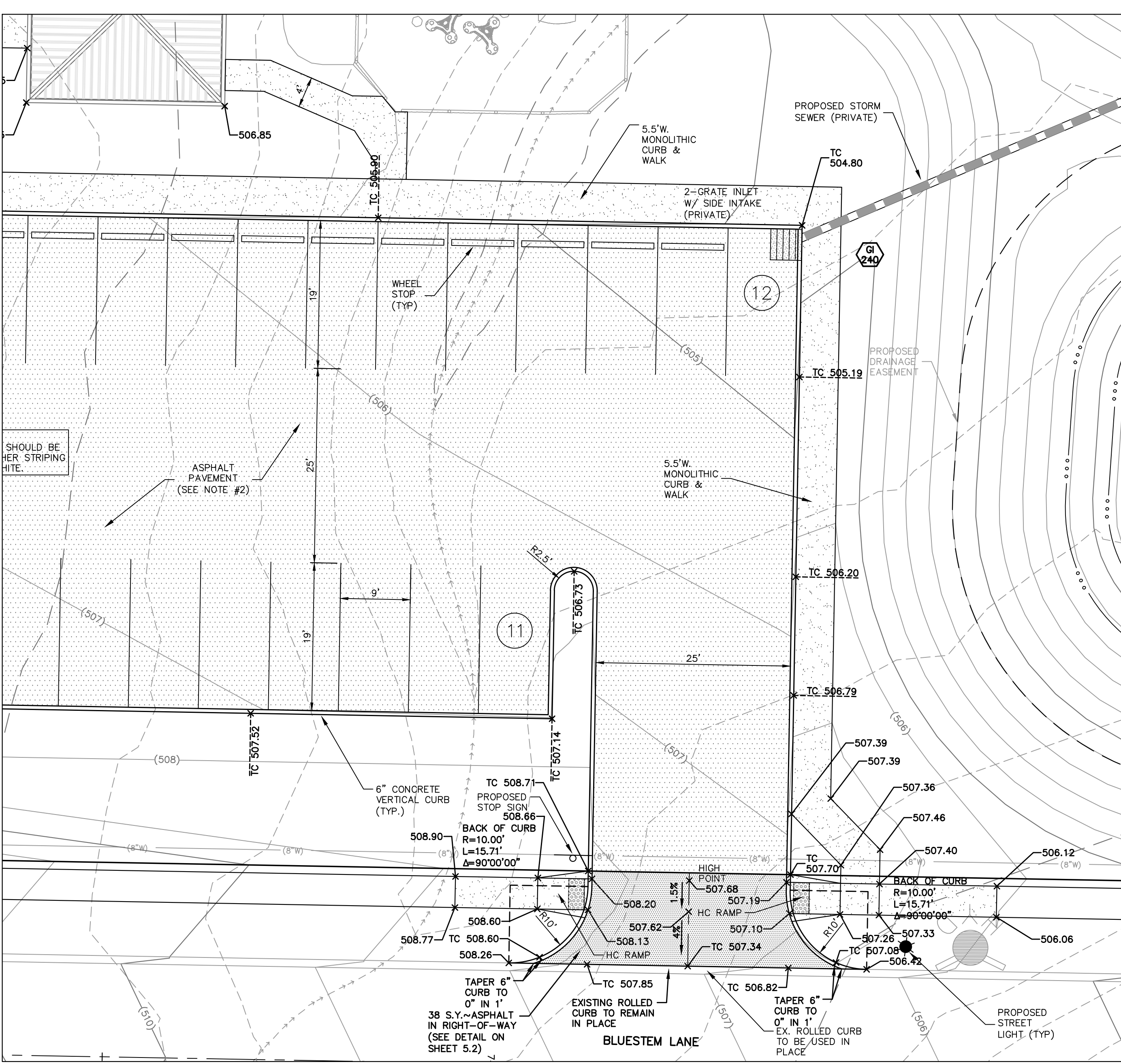
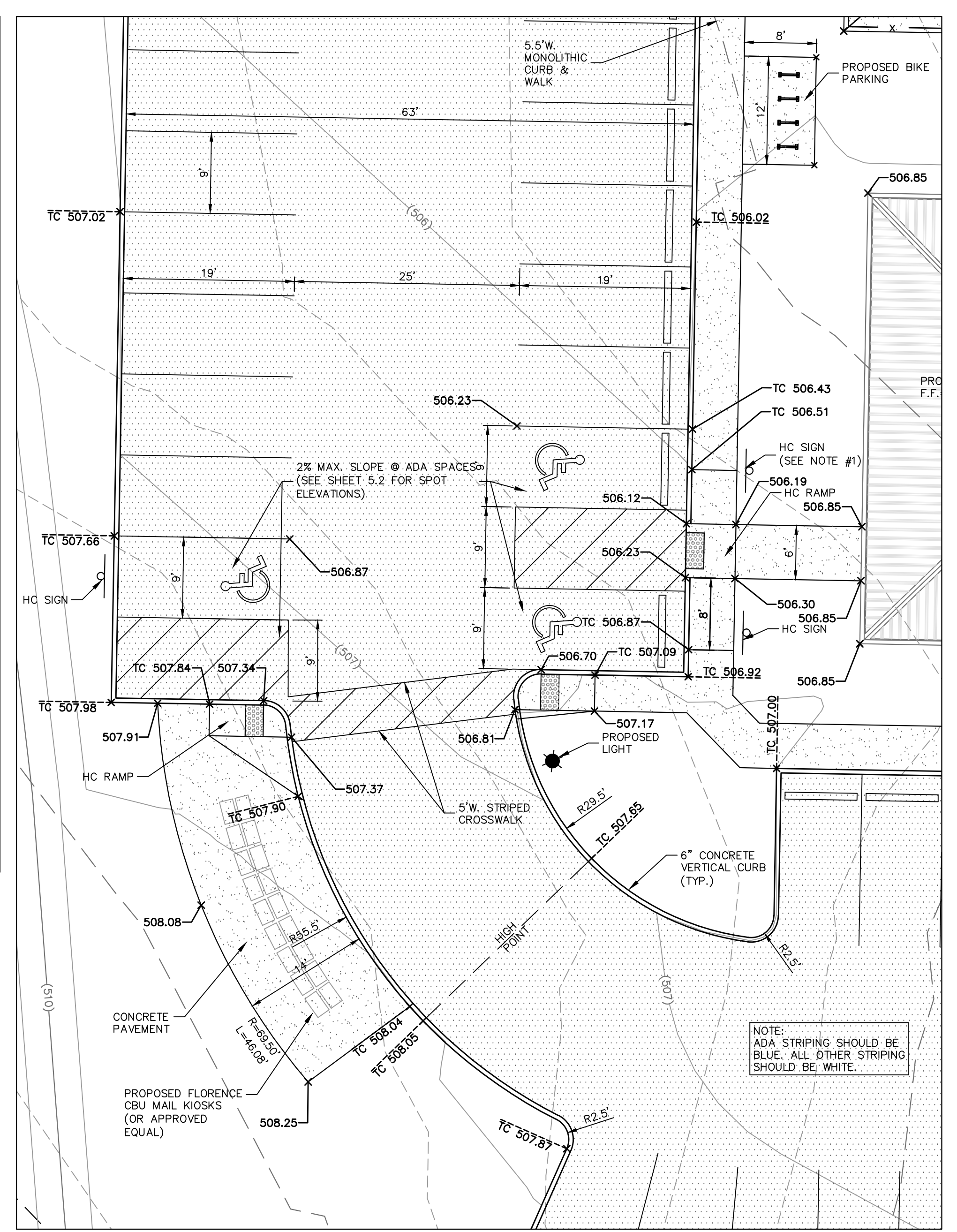
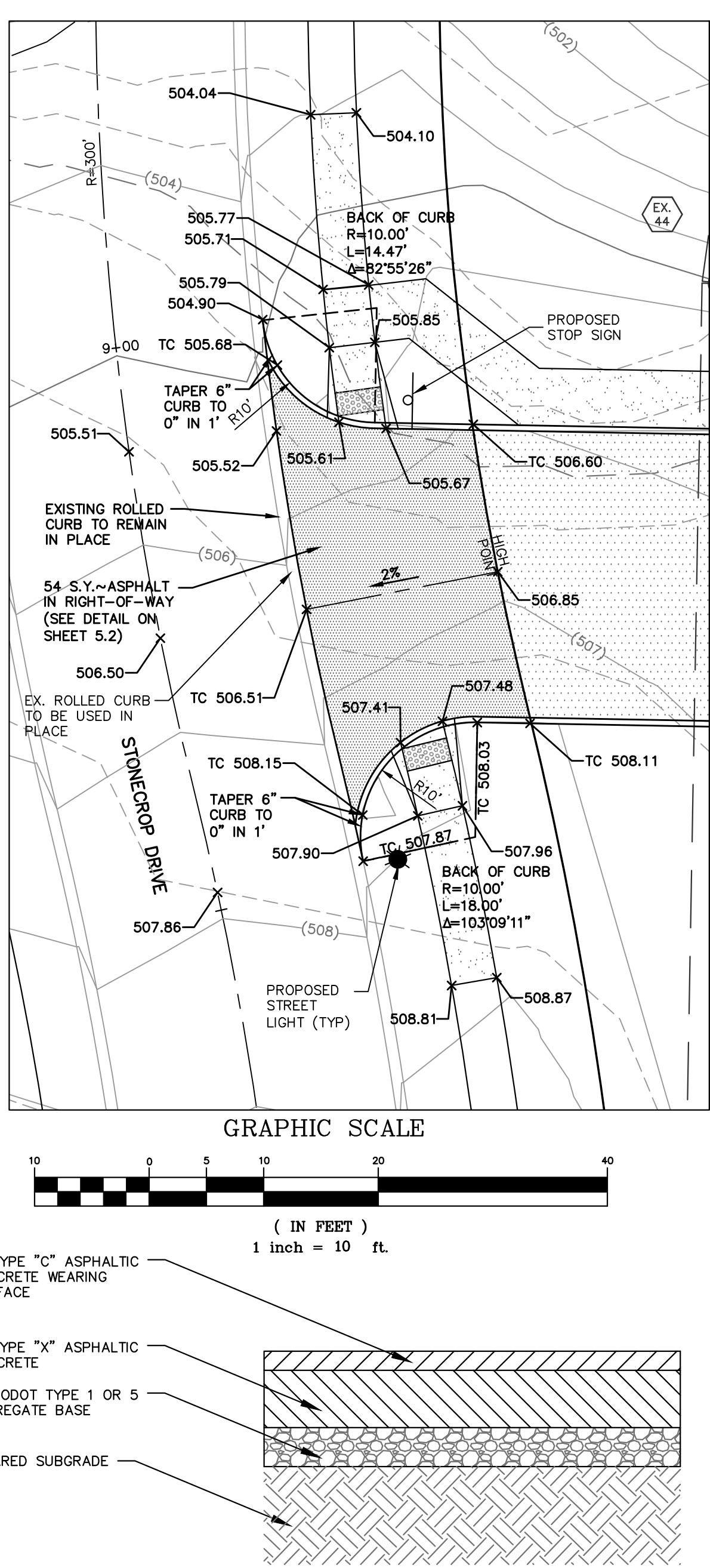
- ISSUE REMARKS/DATE**
- GENERAL NOTES INITIAL SUBMITTAL 02/16/18 CITY COMMENTS
- Do not scale drawings. Follow dimensions. 02/16/18 CITY COMMENTS
 - Sidewalk cross slope 0.02%/ft.
 - Sidewalk thickness increases to 6" on each side of Private Driveways and 7" on each side of Commercial Driveways for one section of sidewalk equal in length to the width of the sidewalk. See "Entrance Construction Details".
 - For sidewalk locations on Cul-De-Sacs see "Pavement Construction Details".
 - For longitudinal and transverse joints, dowel, and tie bar requirements and dimensions refer to the "Integral Curb Pavement Typical Sections and Details".
 - For roadway cross slopes, pavement types, and thickness, refer to "Standard Typical Section".

CITY OF O'FALLON
ENGINEERING DEPARTMENT
O'FALLON, MISSOURI

PAVEMENT CONSTRUCTION DETAILS
CONCRETE SIDEWALK
AND CURB RAMPS

CITY OF O'FALLON
ENGINEERING DEPARTMENT
O'FALLON, MISSOURI

CONCRETE SIDEWALK
THROUGH
COMMERCIAL ENTRANCES



ASPHALT PAVEMENT DETAIL IN RIGHT-OF-WAY
NOT TO SCALE

PROJECT TITLE

COBBLESTONE CROSSING

O'FALLON, MISSOURI

THE **STERLING** CO.
ENGINEERS & SURVEYORS

5055 New Baumgartner Road
St. Louis, Missouri 63129
Ph 314-487-0440 Fax 314-487-8944
www.sterling-eng-survey.com
Corporate Certificate of Authority #001348

STATE OF MISSOURI
SEAN M. ACKLEY
REGISTERED PROFESSIONAL ENGINEER
PE-2009018679

Date: 02/01/18
Sean M. Ackley
License No. PE-2009018679
Civil Engineer

McBRIDE HYLAND GREEN, LLC
16081 SWINGFIELD RIDGE ROAD, SUITE 300
CHESTERFIELD, MISSOURI 63017
Ph. 636-537-2000
Fax 636-537-2546
www.mcbridehomes.com

SITE DETAILS

P+Z No. 29-16.01
City No.
Date: Feb. 1, 2018
Job No. 16-08-239
Page No.

5.2

SITE