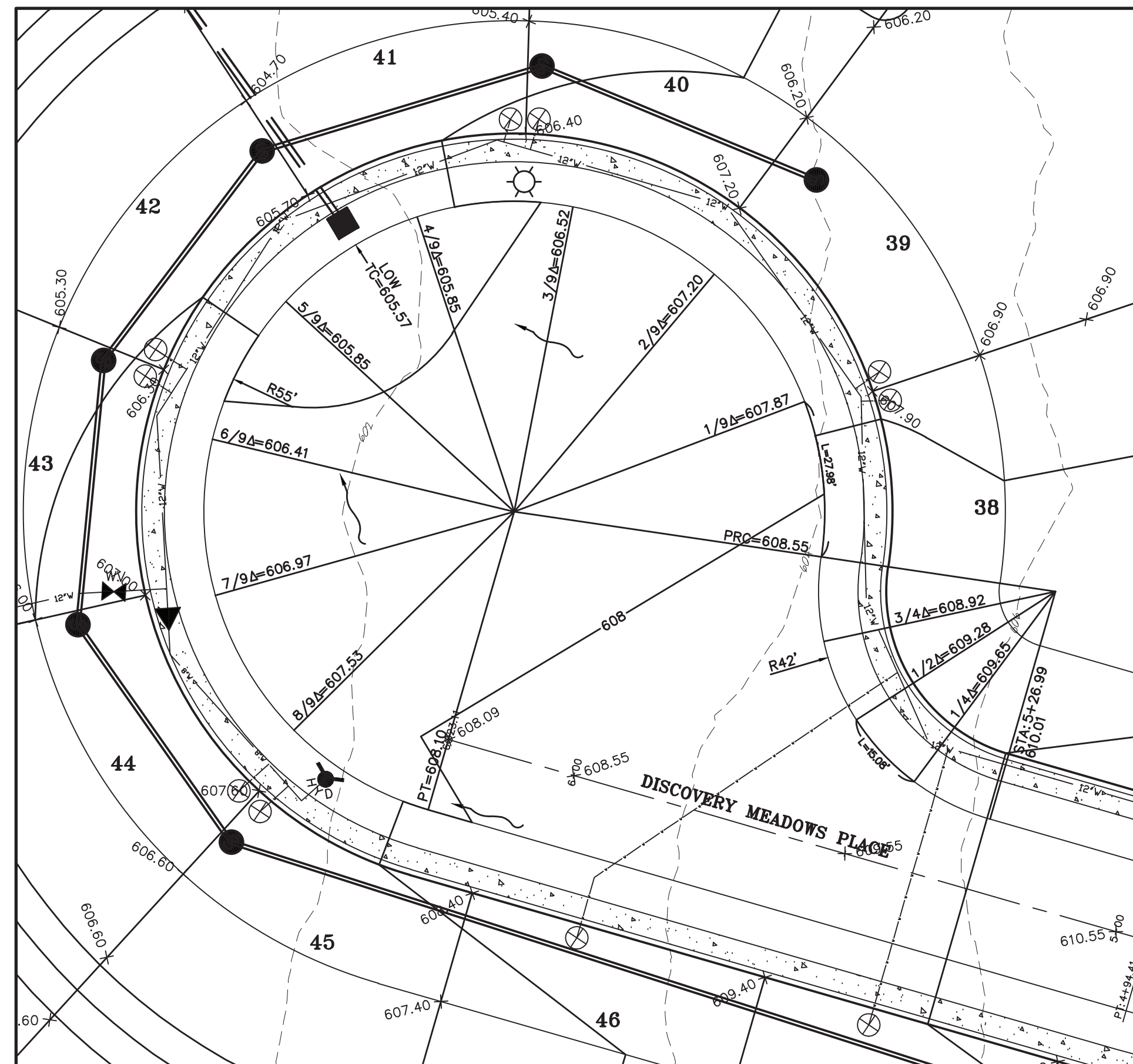


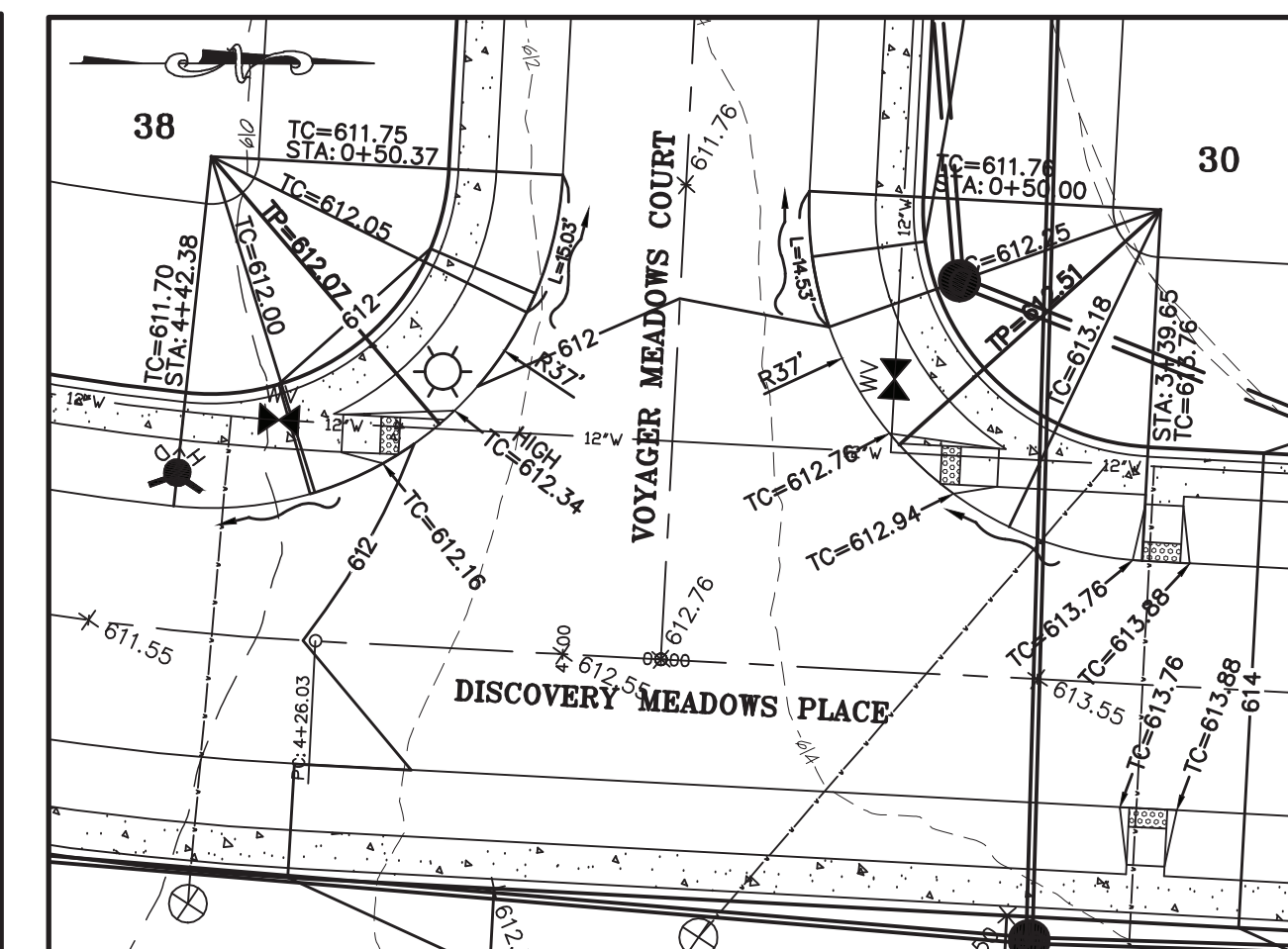
**WARPING, INTERSECTION & MAIL KIOSK PARKING AREA DETAIL**

NOTE:  
ALL ELEVATIONS ARE TO TOP OF CURB UNLESS OTHERWISE NOTED.  
TP=TOP OF PAVEMENT



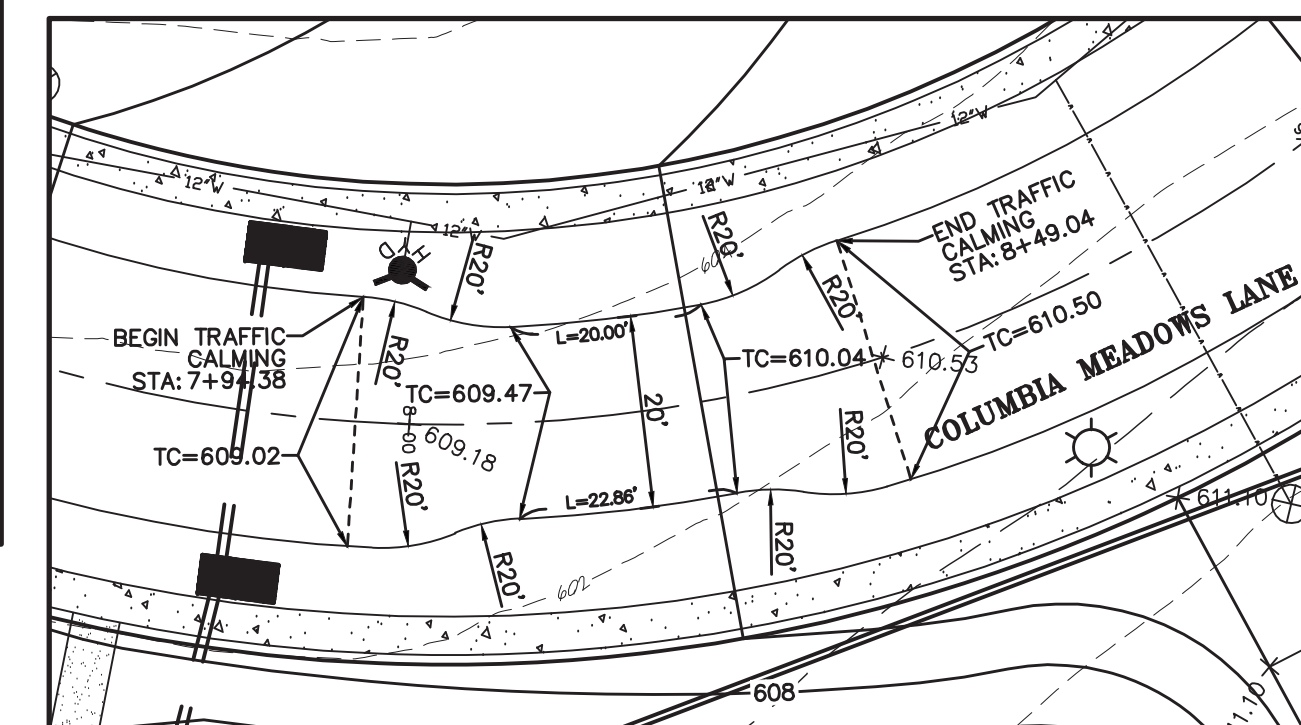
**WARPING DETAIL**

NOTE:  
ALL ELEVATIONS ARE TO TOP OF CURB UNLESS OTHERWISE NOTED.  
TP=TOP OF PAVEMENT



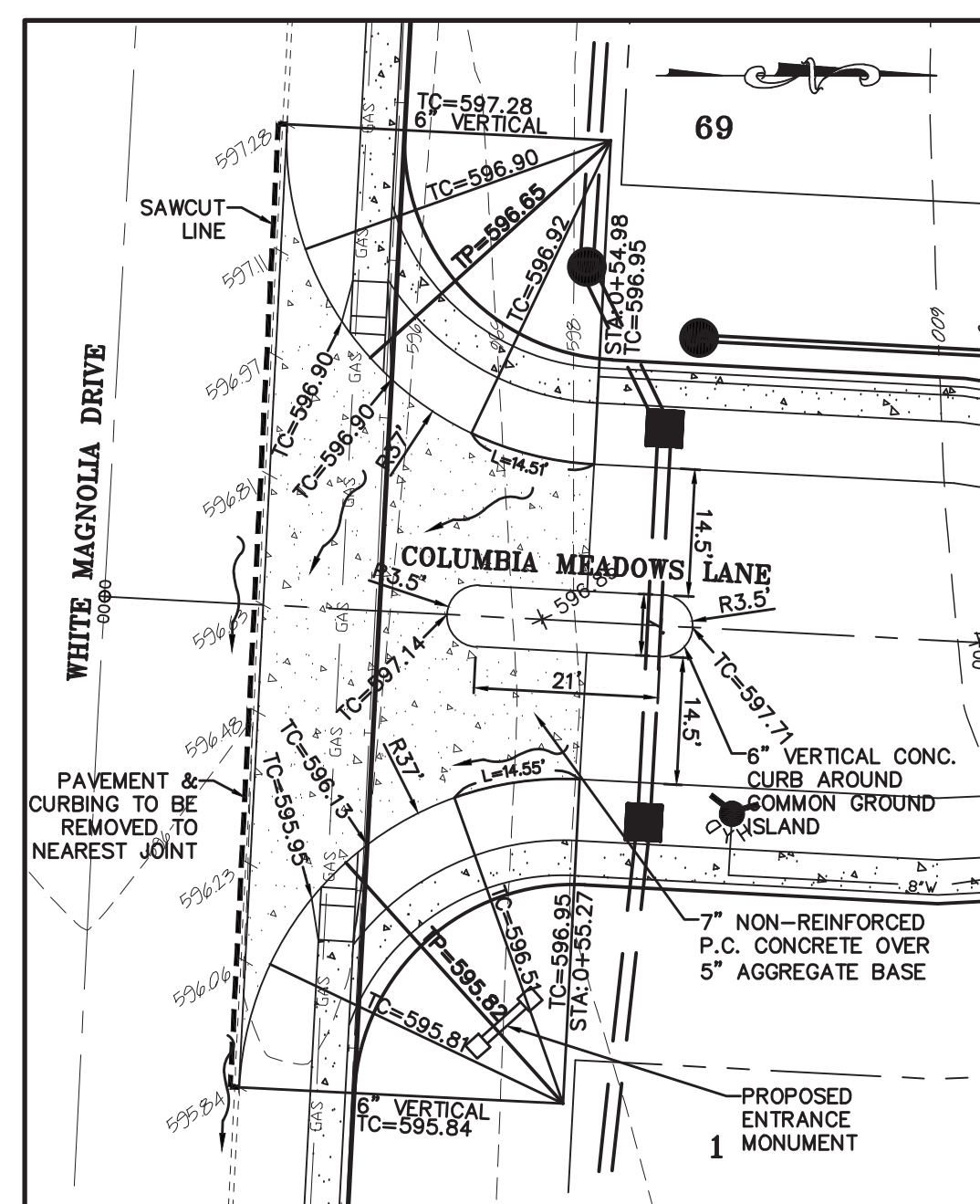
**INTERSECTION DETAIL**

NOTE:  
ALL ELEVATIONS ARE TO TOP OF CURB UNLESS OTHERWISE NOTED.  
TP=TOP OF PAVEMENT



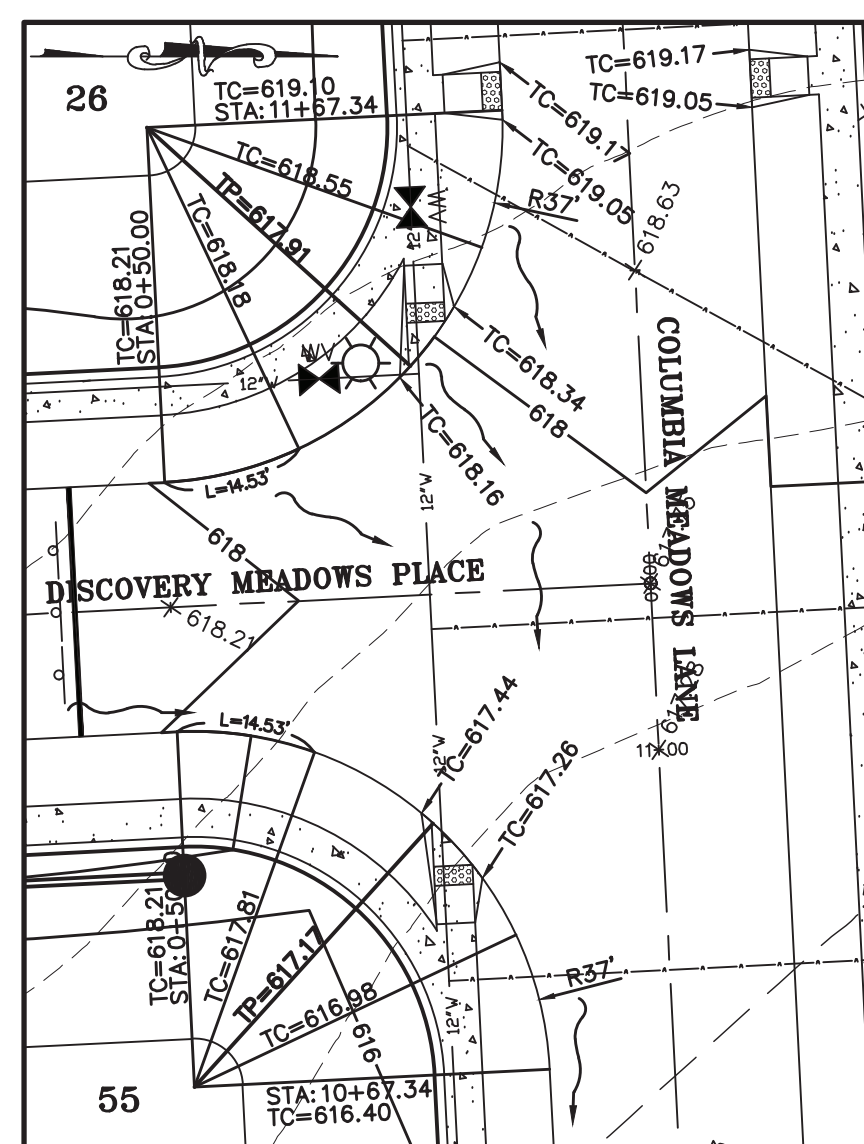
**TRAFFIC CALMING DETAIL**

NOTE:  
ALL ELEVATIONS ARE TO TOP OF CURB UNLESS OTHERWISE NOTED.  
TP=TOP OF PAVEMENT



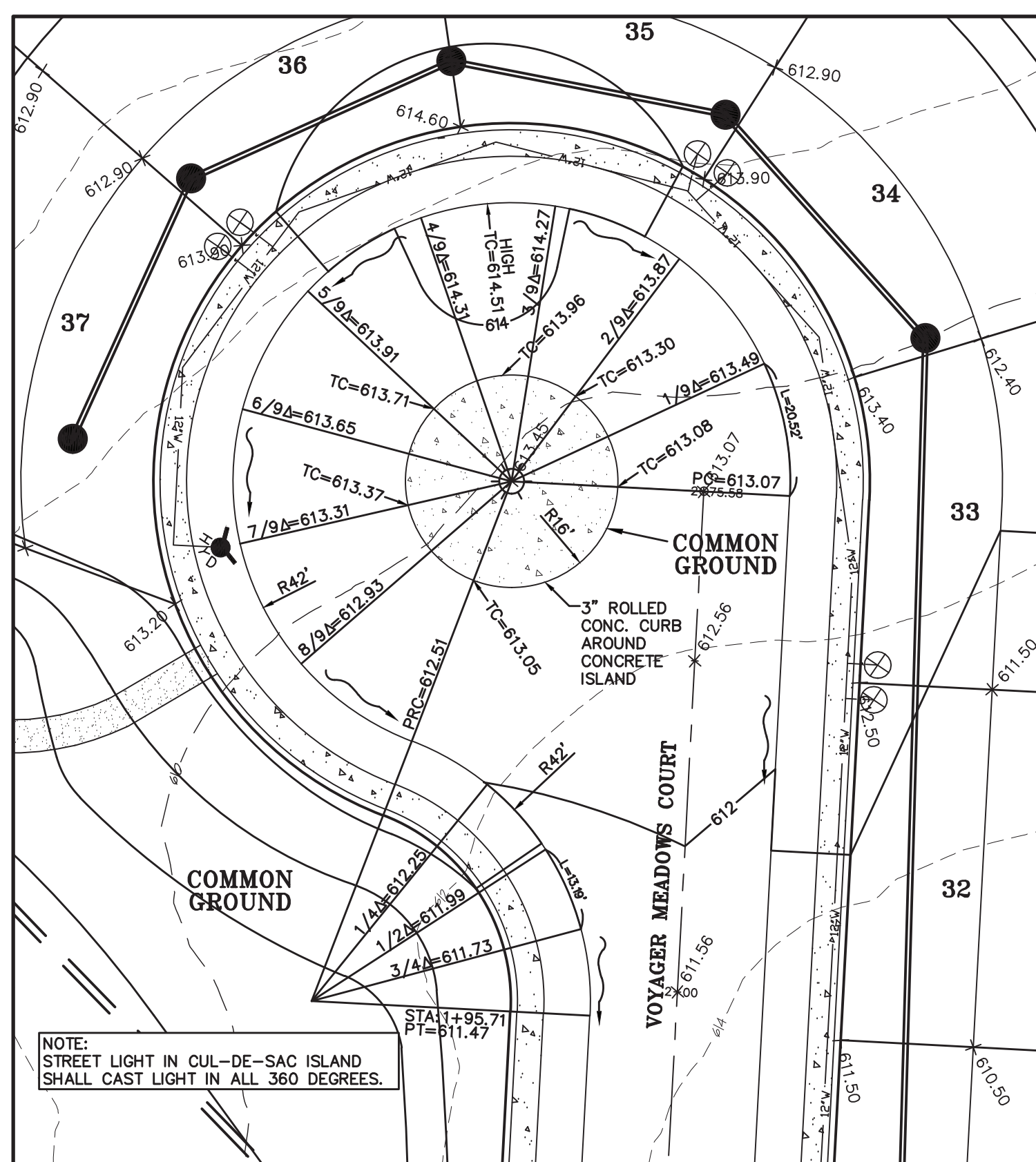
**INTERSECTION DETAIL**

NOTE:  
ALL ELEVATIONS ARE TO TOP OF CURB UNLESS OTHERWISE NOTED.  
TP=TOP OF PAVEMENT



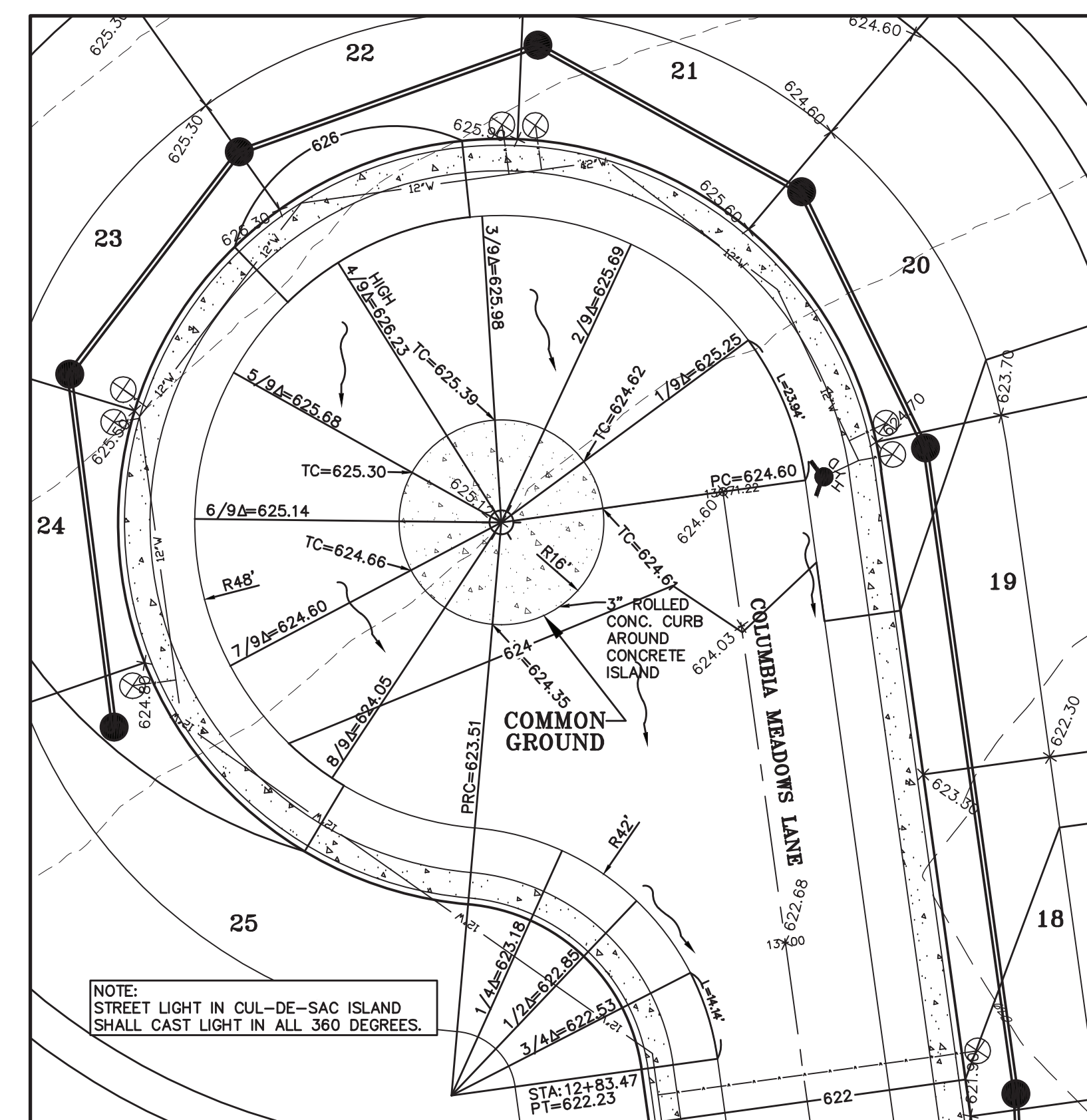
**INTERSECTION DETAIL**

NOTE:  
ALL ELEVATIONS ARE TO TOP OF CURB UNLESS OTHERWISE NOTED.  
TP=TOP OF PAVEMENT



**WARPING DETAIL**

NOTE:  
ALL ELEVATIONS ARE TO TOP OF CURB UNLESS OTHERWISE NOTED.  
TP=TOP OF PAVEMENT



**WARPING DETAIL**

NOTE:  
ALL ELEVATIONS ARE TO TOP OF CURB UNLESS OTHERWISE NOTED.  
TP=TOP OF PAVEMENT

PROJECT TITLE:

**COLUMBIA MEADOWS**

ENGINEERING  
PLANNING  
SURVEYING  
22 Point View Blvd  
St. Charles, MO 63001  
636-928-5552  
FAX 636-928-1718



DISCLAIMER OF RESPONSIBILITY  
I hereby specify that the documents intended to be authorized by my seal are limited to this sheet, and I hereby disclaim any responsibility for all other drawings, specifications, estimates, reports or other documents or instruments relating to or intended to be used for any part or parts of the architectural or engineering project or projects.



JEFFREY B. SIMMONS  
CIVIL ENGINEER  
2007030831  
Copyright © 2020  
Box Engineering Company, Inc.  
Authority No. 000655  
All Rights Reserved

REVISIONS

DATE	REVISIONS
10/13/20	CITY COMMENTS
01/08/21	CITY COMMENTS
02/10/21	CITY COMMENTS
02/23/21	CITY COMMENTS

Developer / Owner:

Alpha Land Development Two, L.L.C.  
612 Trade Center Boulevard  
Chesterfield, MO 63005  
314-721-7779

WARPINGS AND INTERSECTION DETAILS

P+Z No. #19-004868

Approval Date: 07/23/2020

City No. #?

Page No.

16 of 38