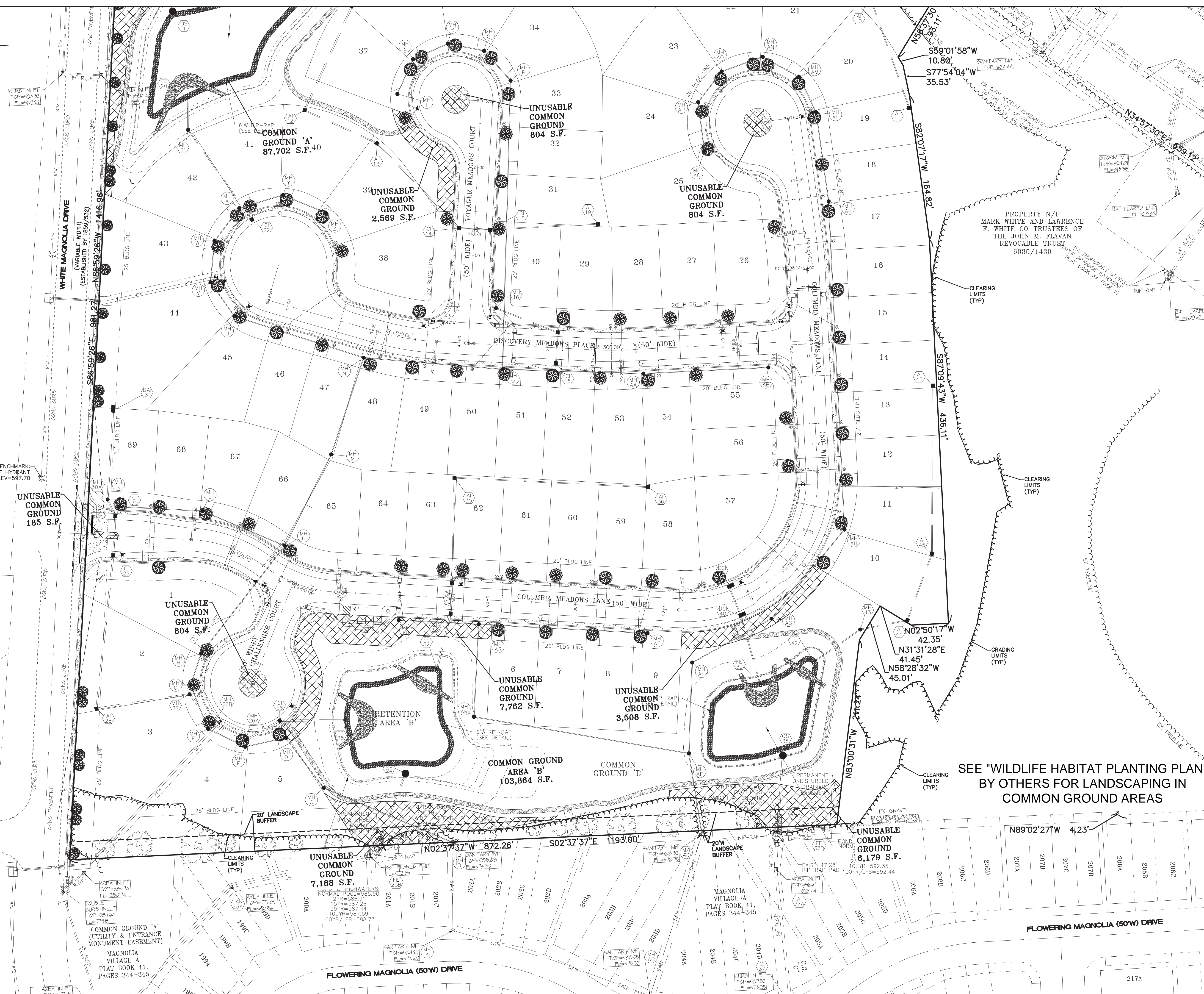


LOT 2  
R&C SUBDIVISION  
PLAT BOOK 35, PAGE 385  
PROPERTY N/P  
VININGS OF OFALON ASSOCIATES LLC  
6405/2451



TURTLE CREEK  
PLAT THREE  
PLAT BOOK 33,  
PAGES 243-247

MAGNOLIA VILLAGE C  
PLAT BOOK 41,  
PAGES 348-350  
COMMON GROUND 'B'  
(UTILITY & ENTRANCE  
MONUMENT EASEMENT)

TURTLE CREEK  
PLAT THREE  
PLAT BOOK 33,  
PAGES 243-247

COMMON GROUND 'A'  
MAGNOLIA VILLAGE A  
PLAT BOOK 41,  
PAGES 344-345

UNUSABLE  
COMMON  
GROUND  
804 S.F.

UNUSABLE  
COMMON  
GROUND  
7,188 S.F.

COMMON GROUND  
AREA 'B'  
103,864 S.F.

UNUSABLE  
COMMON  
GROUND  
7,762 S.F.

UNUSABLE  
COMMON  
GROUND  
3,508 S.F.

UNUSABLE  
COMMON  
GROUND  
804 S.F.

UNUSABLE  
COMMON  
GROUND  
2,569 S.F.

COMMON  
GROUND 'A'  
87,702 S.F.

UNUSABLE  
COMMON  
GROUND  
804 S.F.

SEE "WILDLIFE HABITAT PLANTING PLAN"  
BY OTHERS FOR LANDSCAPING IN  
COMMON GROUND AREAS

UNUSABLE  
COMMON  
GROUND  
6,179 S.F.

PROJECT TITLE:  
**COLUMBIA  
MEADOWS**



ENGINEERING  
PLANNING  
SURVEYING  
224 Point View Blvd  
St. Charles, MO 63001  
636-928-5552  
FAX 636-928-1718

DISCLAIMER OF RESPONSIBILITY  
I hereby specify that the documents intended to be  
authenticated by my seal are limited to this sheet,  
and I hereby disclaim any responsibility for all other  
drawings, specifications, estimates, reports or other  
documents or instruments relating to or intended to  
be used for any part or parts of the architectural or  
engineering project or projects herein.

STATE OF MISSOURI  
JEFFREY B. SIMMONS  
NUMBER  
PE-2007030831  
PROFESSIONAL ENGINEER  
JEFFREY B. SIMMONS  
CIVIL ENGINEER  
2007030831  
Copyright © 2020  
Box Engineering Company, Inc.  
Authority No. 000655  
All Rights Reserved

REVISIONS	
10/13/20	CITY COMMENTS
01/08/21	CITY COMMENTS
02/10/21	CITY COMMENTS
02/23/21	CITY COMMENTS

Developer / Owner:  
Alpha Land Development Two, L.L.C.  
612 Trade Center Boulevard  
Chesterfield, MO 63005  
314-721-7779

LANDSCAPE PLAN

P+Z No. #19-004868  
Approval Date: 07/23/2020  
City No. #?  
Page No.  
24 of 38