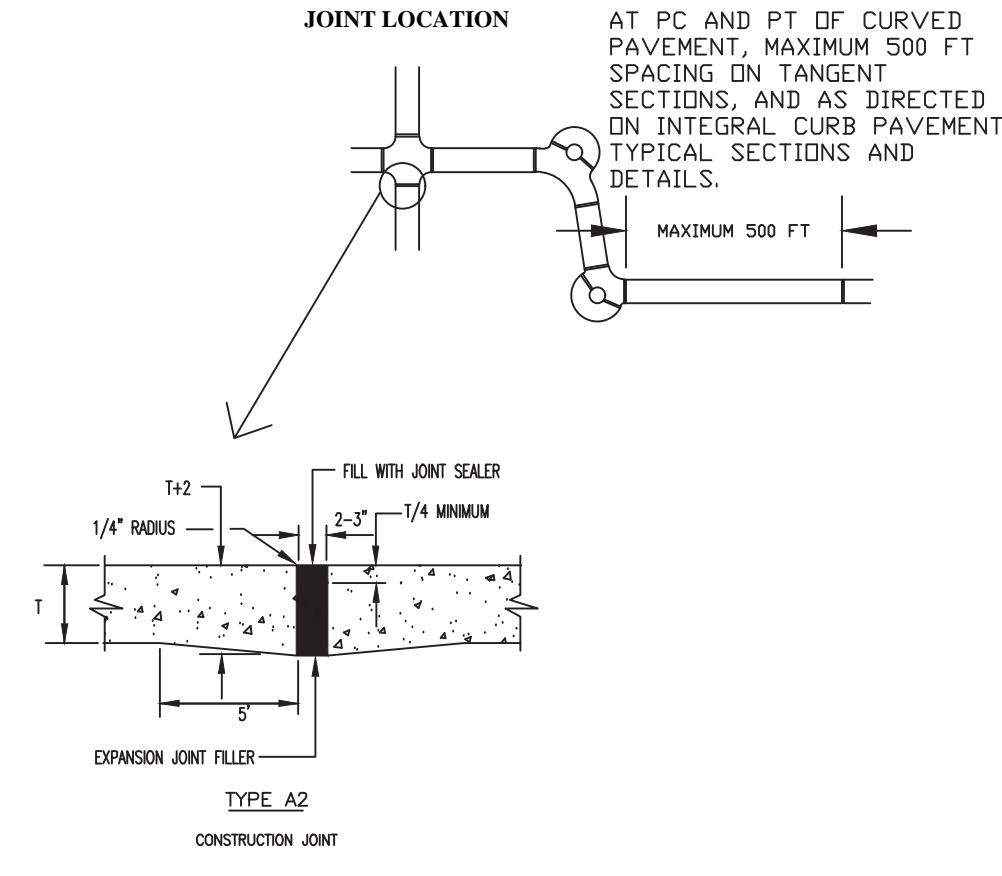


- NOTES:
- All driveway entrances shall be six (6) inches P.C.C. in depth from the curb to the property line.
  - All driveway approaches constructed in conjunction with sidewalk shall give the appearance that the sidewalk is continuous. That portion of the driveway approach that doubles as a sidewalk shall have a one-fourth (1/4) inch per foot cross slope the same as the abutting sidewalk.
  - A two (2) inch expansion joint is required between the street and driveway approach. One (1) additional two (2) inch expansion joint is required between the garage floor and the termination of the driveway.

CITY OF O'FALLON  
ENGINEERING DEPARTMENT  
O'FALLON, MISSOURI

Integral Curb Detail  
"B" at Driveway

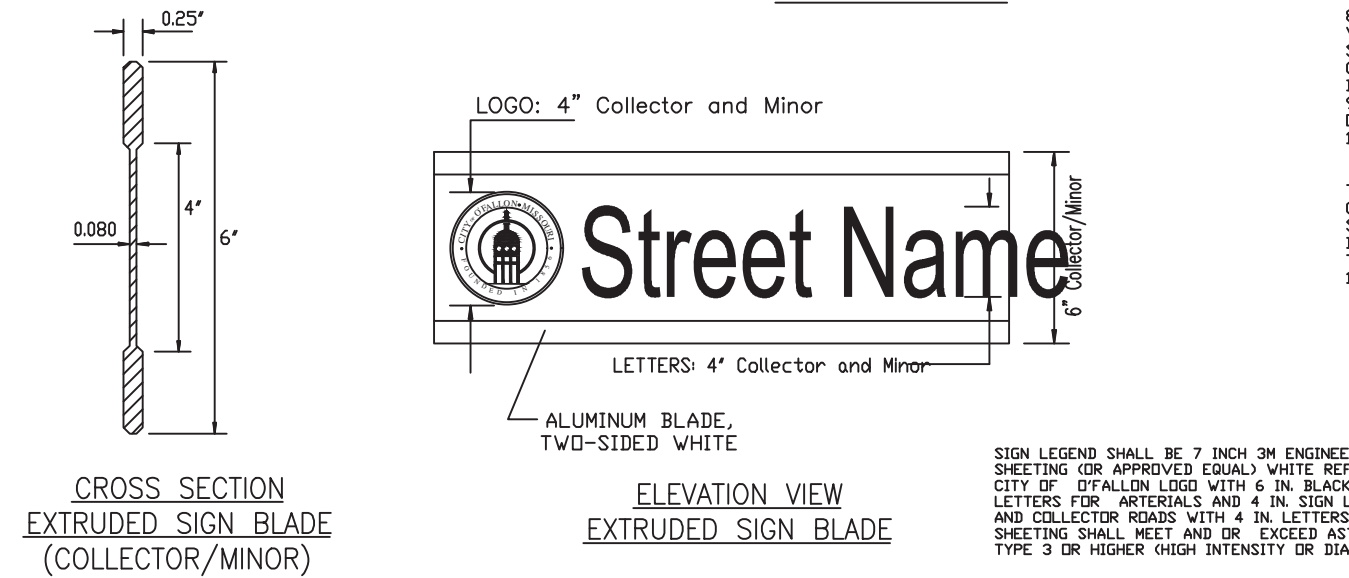
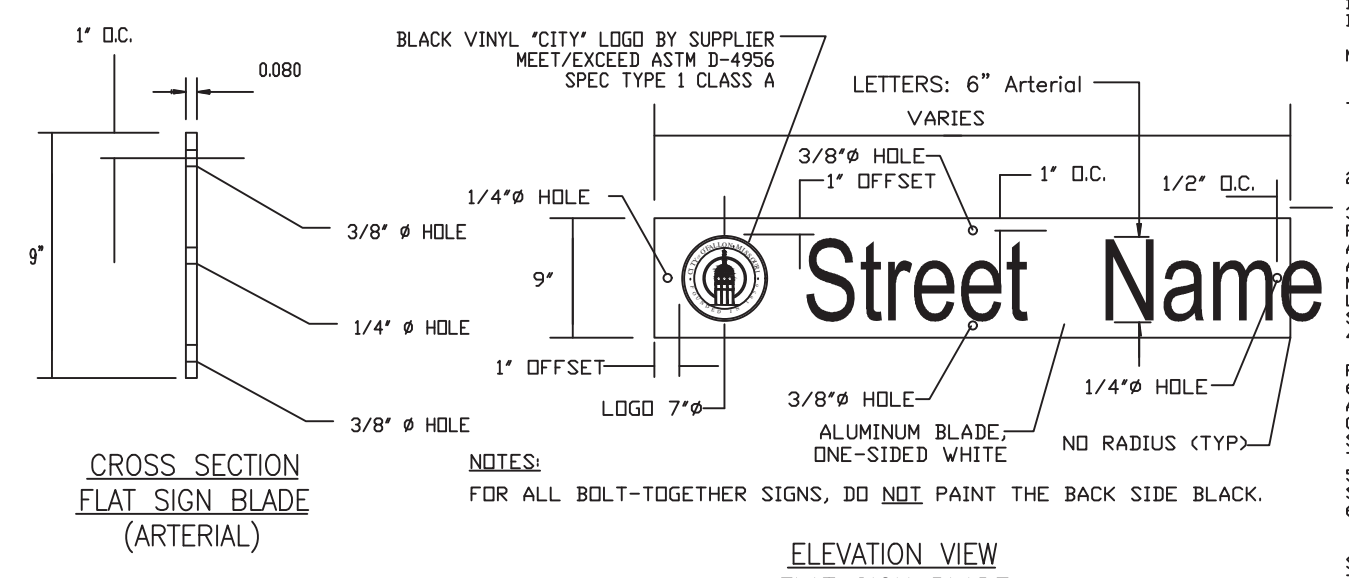
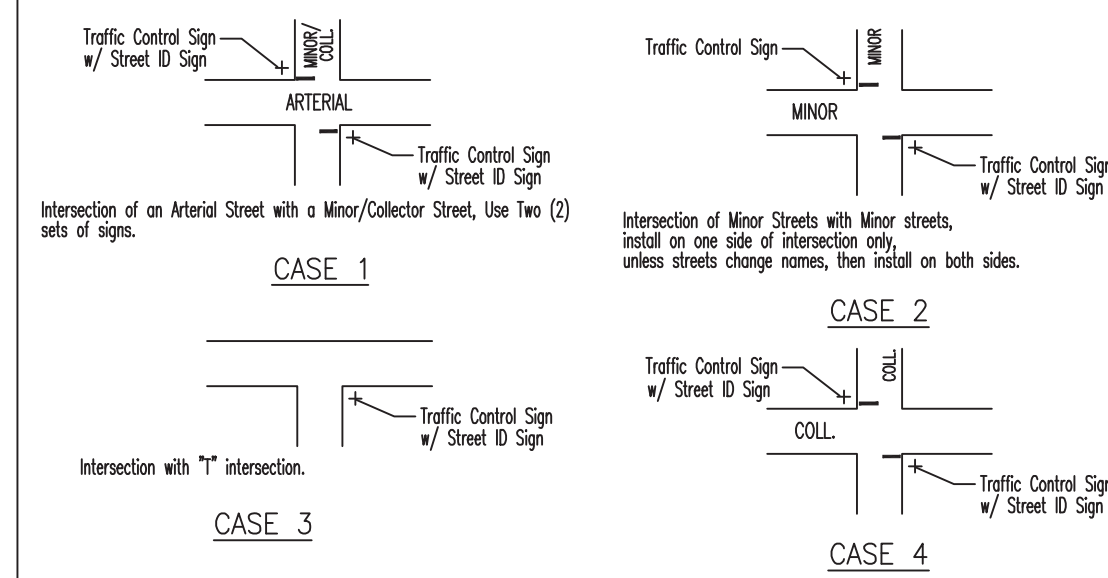
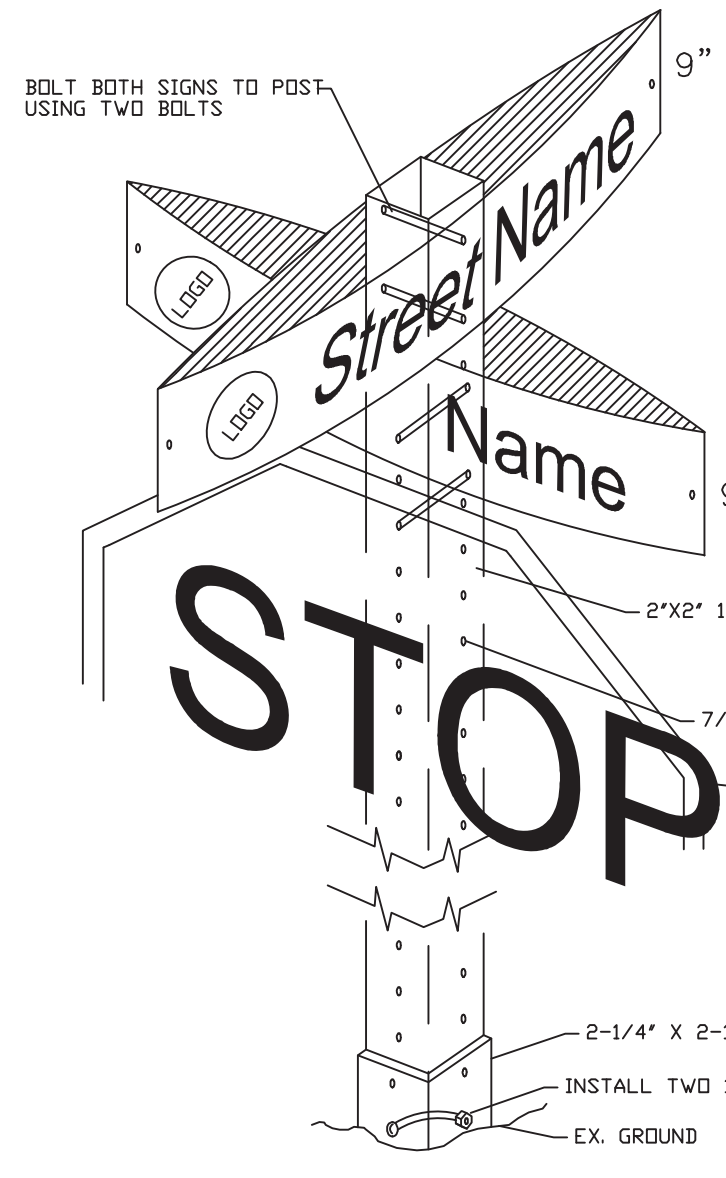
SECTION NO. 405.210 (G)



- NOTES:
- JOINT FILLER COMPOSED OF CELLULAR FIBERS, ASTM D-1751, MAY BE USED AT DRIVEWAY, SIDEWALK, AND SEWER INLET AND MANHOLE LOCATIONS.
  - SEE "INTEGRAL CURB DETAIL "B" AT DRIVEWAYS" FOR EXPANSION JOINT REQUIREMENTS AT DRIVEWAY CONNECTIONS TO THE STREET AND THE GARAGE.

CITY OF O'FALLON  
ENGINEERING DEPARTMENT  
O'FALLON, MISSOURI

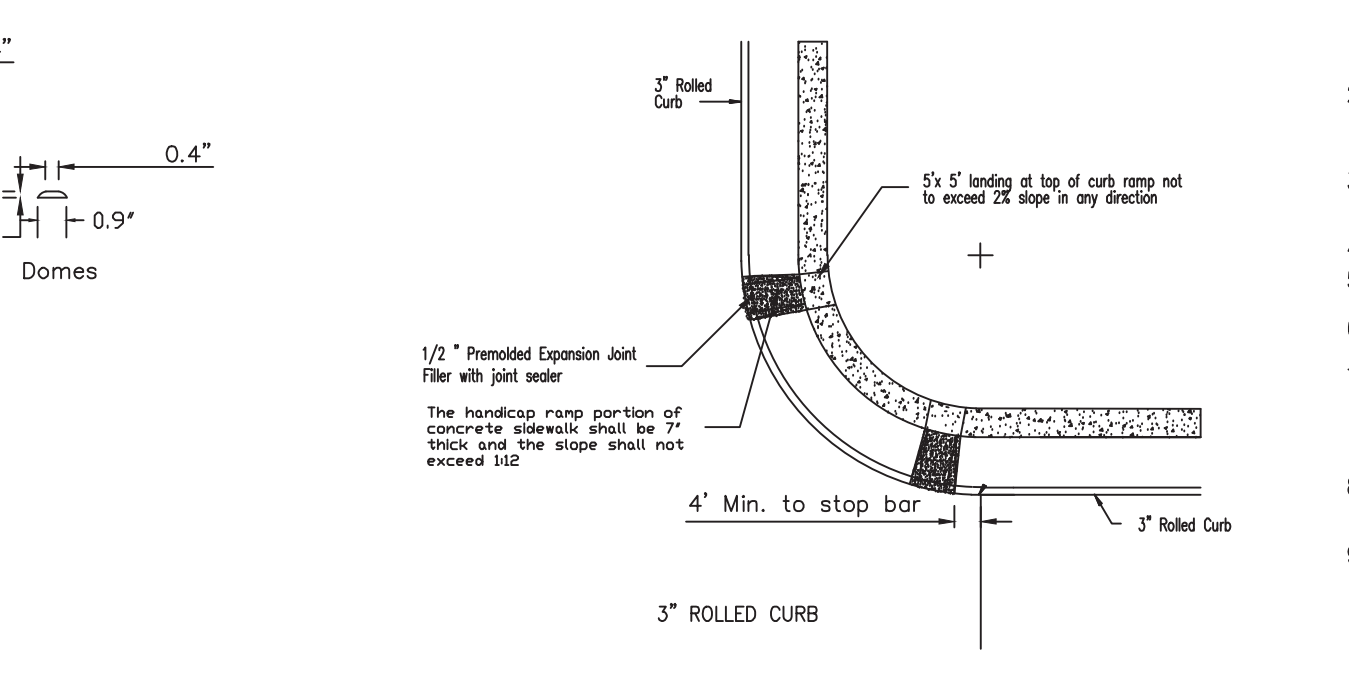
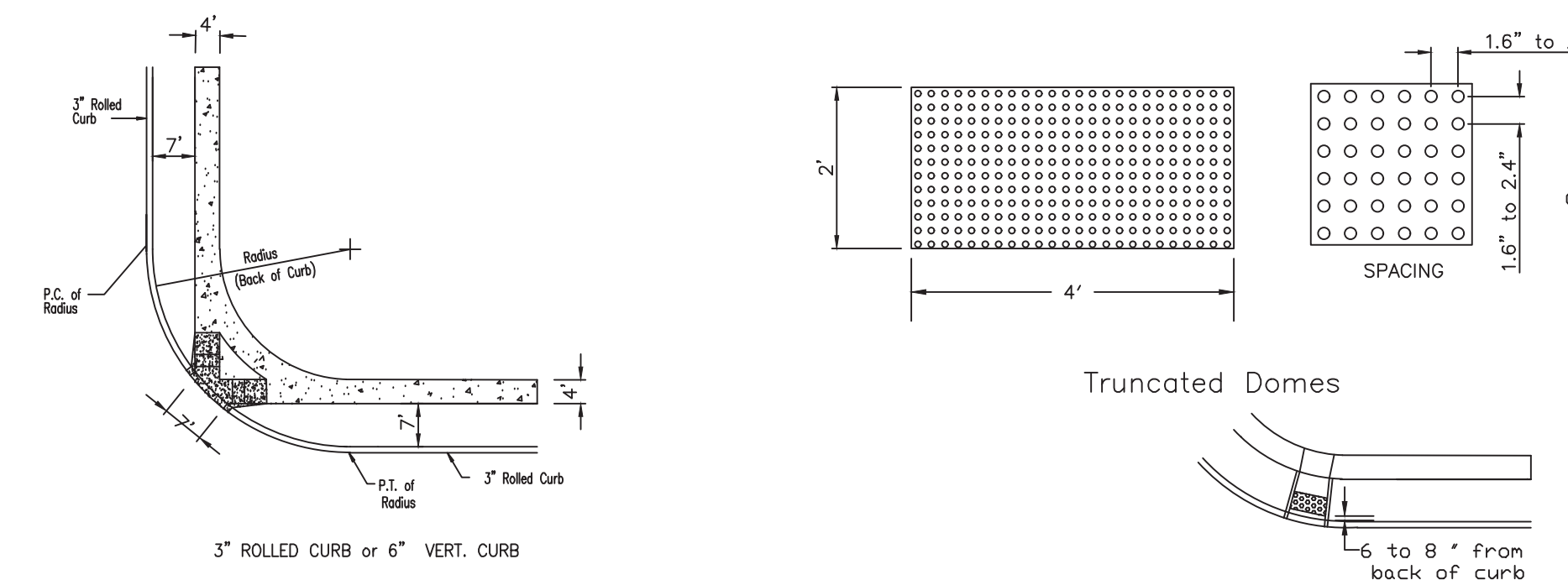
PAVEMENT CONSTRUCTION  
DETAIL



- GENERAL NOTES:
- ALL SIGN POST AND BACK OF SIGNS THAT ARE TO BE PAINTED BLACK SHALL USE A PAINT SYSTEM THAT PROVIDES A MINIMUM 7 YEAR LIFE EXPECTANCY.
  - ALL SIGN LOCATIONS AND SIZES MUST BE APPROVED BY THE ENGINEERING DIVISION PRIOR TO INSTALLATION.
  - STREET NAME SIGN PLATES SHALL BE 9 INCHES WIDE FLAT. BOLT TOGETHER FOR ANY ARTERIAL INTERSECTIONS AND 6 INCHES WIDE EXTRUDED ALUMINUM PANELS FOR ALL MINOR AND COLLECTOR ROADS. TYPICAL LENGTHS FOR MINOR AND COLLECTOR SIGNS SHALL BE 24, 30 & 36 INCH LENGTHS.
  - STREET NAME SIGN LEGEND SHALL BE 7 INCH 3M ENGINEER GRADE SHEETING (OR APPROVED EQUAL) WHITE REFLECTIVE WITH THE CITY OF O'FALLON LOGO WITH 6 IN BLACK NON-REFLECTIVE LETTERS FOR ARTERIALS AND 4 IN LETTERS FOR MINOR AND COLLECTOR ROADS WITH 4 IN LETTERS. ALL REFLECTIVE SHEETING SHALL MEET AND EXCEED ASTM D 4956 SPEC. TYPE 3 OR HIGHER HIGH INTENSITY OR DIAMOND GRADE.
  - "CLEARLY" FINISH SHALL BE USED ON ALL STREET SIGNS.
  - SIGN POSTS SHALL BE HEAVY "C" CHANNEL (2 LBS/FT) PAINTED BLACK STEEL POSTS FOR COLLECTOR/MINOR STREETS. ARTERIAL STREETS SHALL HAVE 2 SQUARE FEET BREAKAWAY ASSEMBLY.
  - SIGN POSTS SHALL EXTEND A MINIMUM OF 30 INCHES IN THE GROUND AND FLUSH WITH THE GROUND SURFACE.
  - THE CONTRACTOR SHALL BE RESPONSIBLE FOR VERIFICATION OF UNDERGROUND UTILITIES AND STRUCTURES SHOWN ON CITY RECORDS. UTILITIES NOT SHOWN BY SIG-RITE SERVICES.
  - SIGNS SHALL NOT BE PLACED AT ANY DISTANCE PROBLEM OR CONFLICT WITH PEDESTRIAN TRAFFIC.
  - SPEED LIMIT SIGNS MUST BE AT EVERY ENTRANCE TO A SUBDIVISION ALONG THE LOT LINE BETWEEN FIRST AND SECOND LOT AND APPROXIMATELY FIFTY FEET FROM INTERSECTION AND APPROXIMATELY EVERY TWO THOUSAND FEET (2,000) THEREAFTER.
  - ALL SIGNS UNLESS OTHERWISE STATED, SHOULD BE CONSTRUCTED AND INSTALLED PER MUTCD.

CITY OF O'FALLON  
ENGINEERING DEPARTMENT  
O'FALLON, MISSOURI

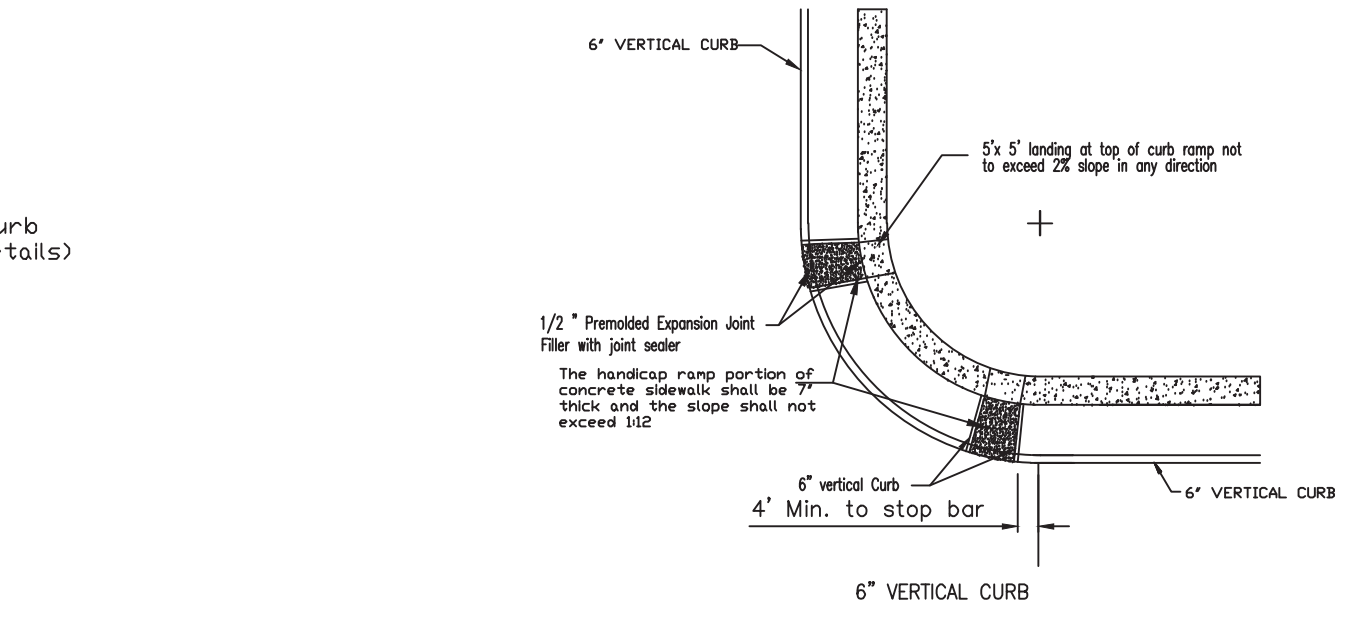
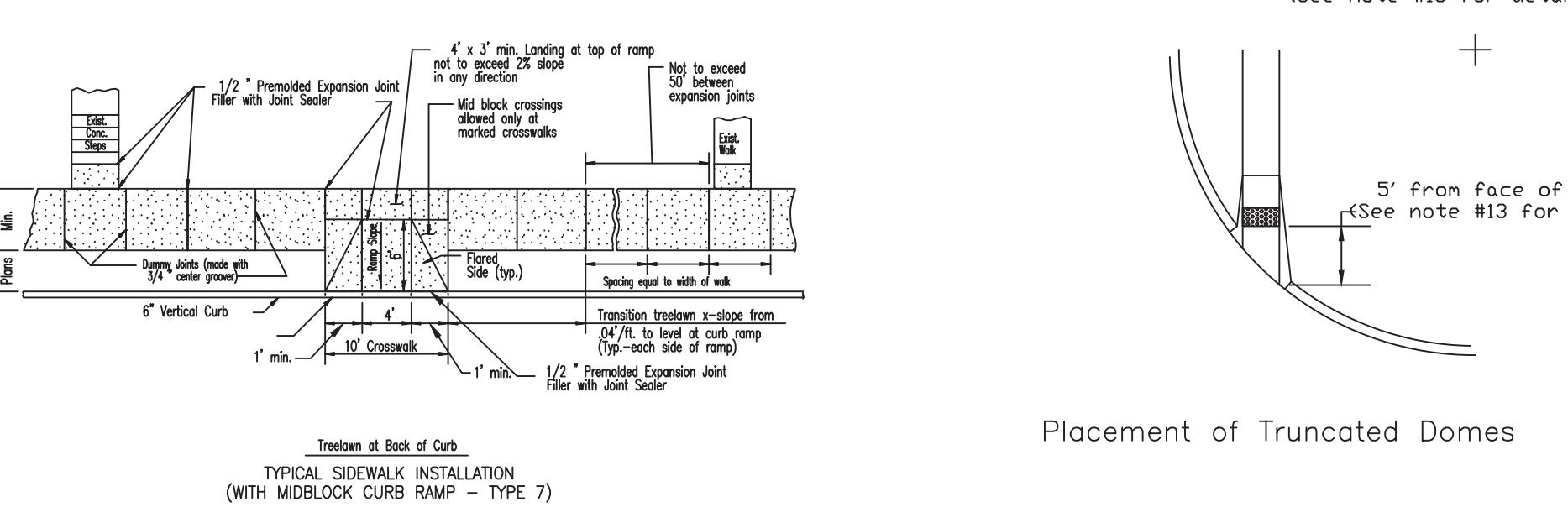
SIGNS,  
DETAILS AND LOCATIONS



- GENERAL NOTES:
- Do not scale drawing. Follow dimensions.
  - Sidewalks and sidewalk curb ramps shall be constructed in accordance with these details and the current approved Americans with Disabilities Act Accessibility Guidelines (AGAG).
  - Minimum sidewalk width along 6" vertical curb shall be 5 feet. Minimum sidewalk width along 3" rolled curb shall be 4 feet.
  - Maximum sidewalk cross slope 0.02'/ft.
  - All sidewalk sections shall be 4" thick, except where indicated as 7" thick by shaded portions shown on details.
  - Where curb ramp meets pavement, bullnose will not be permitted.
  - If integral concrete curb is constructed, strike a dummy joint across bottom of ramp at curb line. Concrete curb is dowel-on, block out pavement to provide full depth curb across ramp from outer point of curb taper to outer point of curb taper.
  - For pavement longitudinal and transverse joints and dowel and tie bar requirements and dimensions refer to the Pavement Construction Details for "Joints and Curbs".
  - For roadway cross slopes, pavement types, and thicknesses, refer to standard typical sections.
  - The intersection of two sidewalks or the intersection of a sidewalk and a driveway may serve as a wheelchair passing space on sidewalks less than 5 feet wide.
  - All curb ramps shall have a detectable warning complying with Americans with Disabilities Act Accessibility Guidelines (AGAG).
  - All ramps must line up with the corresponding ramps on the other side of the street or intersection.
  - All truncated domes shall run parallel to the road that it's crossing.
  - Truncated warning domes shall not be stamped and will be a ADA approved product.

CITY OF O'FALLON  
ENGINEERING DEPARTMENT  
O'FALLON, MISSOURI

PAVEMENT CONSTRUCTION DETAILS  
CONCRETE SIDEWALK  
AND CURB RAMPS



PROJECT TITLE:  
**COLUMBIA MEADOWS**

ENGINEERING  
DRAWING  
SURVEYING

221 Point View Blvd.  
St. Charles, MO 63001  
636-928-5562  
FAX 928-1718

DISCLAIMER OF RESPONSIBILITY  
I hereby specify that the documents intended to be authenticated by my seal are limited to this sheet, and I hereby disclaim any responsibility for all other drawings, specifications, estimates, reports or other documents or instruments relating to or intended to be used for any part or parts of the architectural or engineering project or survey.

REVISIONS	
10/13/20	CITY COMMENTS
01/08/21	CITY COMMENTS
02/10/21	CITY COMMENTS
02/23/21	CITY COMMENTS

Developer / Owner:  
Alpha Land Development Two, L.L.C.  
612 Trade Center Boulevard  
Chesterfield, MO 63005  
314-721-7779

PAVEMENT DETAILS

P+Z No. #19-004868  
Approval Date: 07/23/2020  
City No. #?

Page No.  
30 of 38

ENGINEERS SEAL DOES NOT APPLY TO CITY OF O'FALLON DETAILS ON THIS SHEET.

DATE: 07/23/2020 10:45:00 AM  
FILE: C:\Users\jwalsh\OneDrive\Documents\20 PROJECTS\19-004868\19-004868-01\PAVEMENT CONSTRUCTION\PAVEMENT CONSTRUCTION.DWG