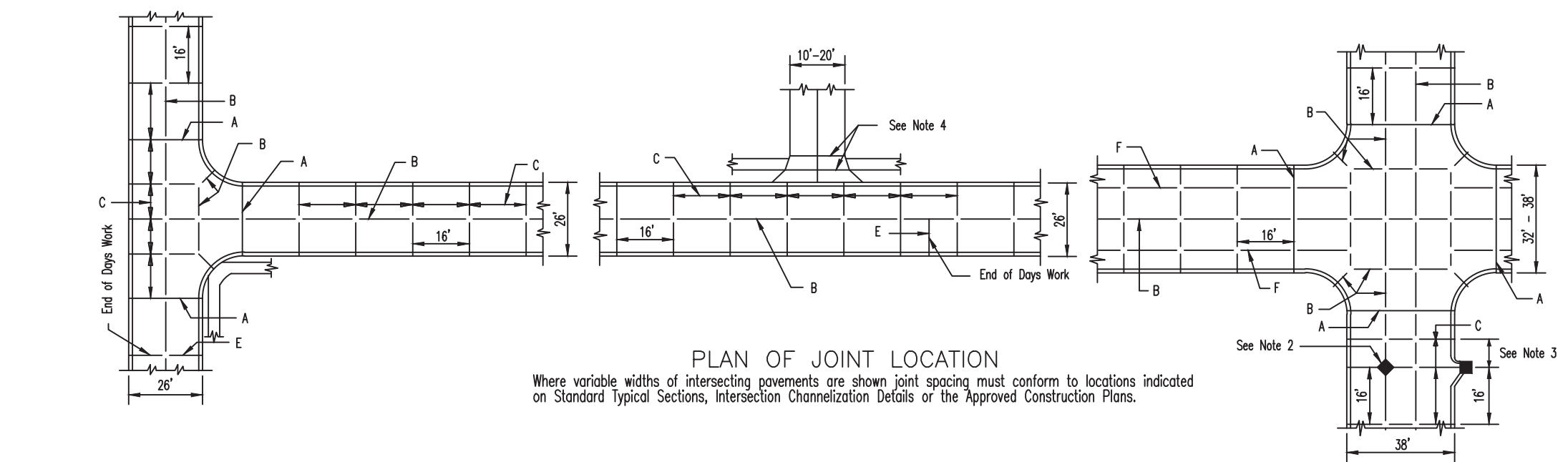
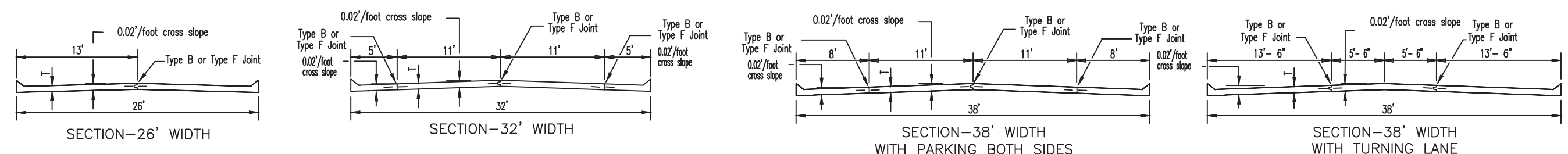


INTEGRAL ROLLED CURB AND CONCRETE PAVEMENT TYPICAL SECTIONS AND DETAILS



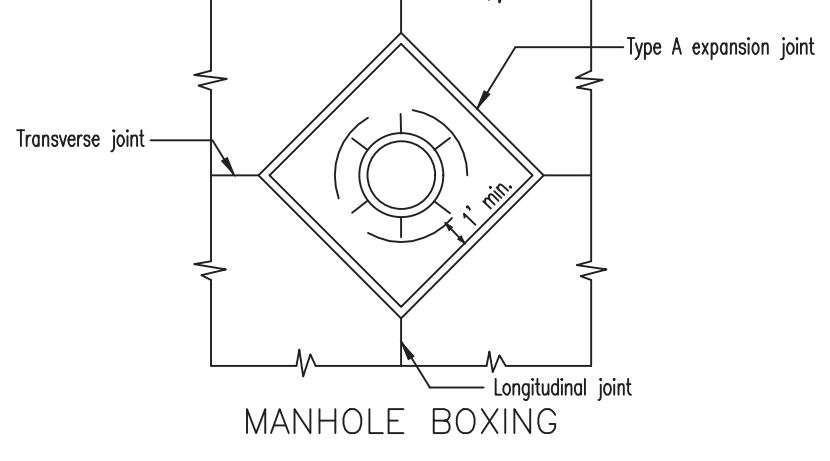
- GENERAL NOTES**
- Do not scale drawing. Follow dimensions.
 - All street inlets shall be separated from the pavement and curb by expansion joint material extending completely through curb and slab. Manhole casing within the pavement limits shall be boxed as shown.
 - When a joint falls within 5ft. of, or contacts inlets, manholes, or other structures, shorten one or more panels either side of opening to permit joint to fall on round structures and at or between corners of rectangular structures.
 - Driveway configurations are shown in the "Entrance Construction Details."
 - Construction joints and tie bars may be omitted when curb is poured monolithic with pavement.
 - Minimum Thickness for Pavement is:
 - Residential 26'-32' wide Streets 6"
 - Residential 33' wide Streets 7"
 - For joint and bar requirements refer to the Pavement Construction Details for Joints and Curbs. Note that the width and location may change the type of joint required.
 - Transverse or longitudinal construction joints in slip formed pavements shall be a saw cut joint, at a max. 14' spacing.
 - The locations of the Type B longitudinal construction joints in the sections may be interchanged for the different widths of construction if approved by the Department.

JOINT REQUIREMENTS FOR CONCRETE PAVEMENT

STREET	JOINT TYPE	JOINT AND BAR REQUIREMENTS
3 LANE RESIDENTIAL 32'-38' wide pavement	Transverse	TYPE G 1" smooth dowel bars 18"lg. @ 12" ctrs.
	Longitudinal	Within a poured section: TYPE F 5/8" ϕ deformed tie bars 18"lg. @ 30" ctrs. At the edge between two poured sections: TYPE B 5/8" ϕ deformed tie bars 30"lg. @ 30" ctrs.
	Expansion	TYPE A no steel bars
RESIDENTIAL 2 LANE 26' wide pavement	Transverse	TYPE C no steel bars
	Longitudinal	Full Width Construction: TYPE F modified with 1/2" ϕ deformed tie bars 18"lg. @ 30" ctrs. Half Width Construction: TYPE B modified with 1/2" ϕ deformed tie bars 30"lg. @ 30" ctrs.
	Expansion	TYPE A no steel bars

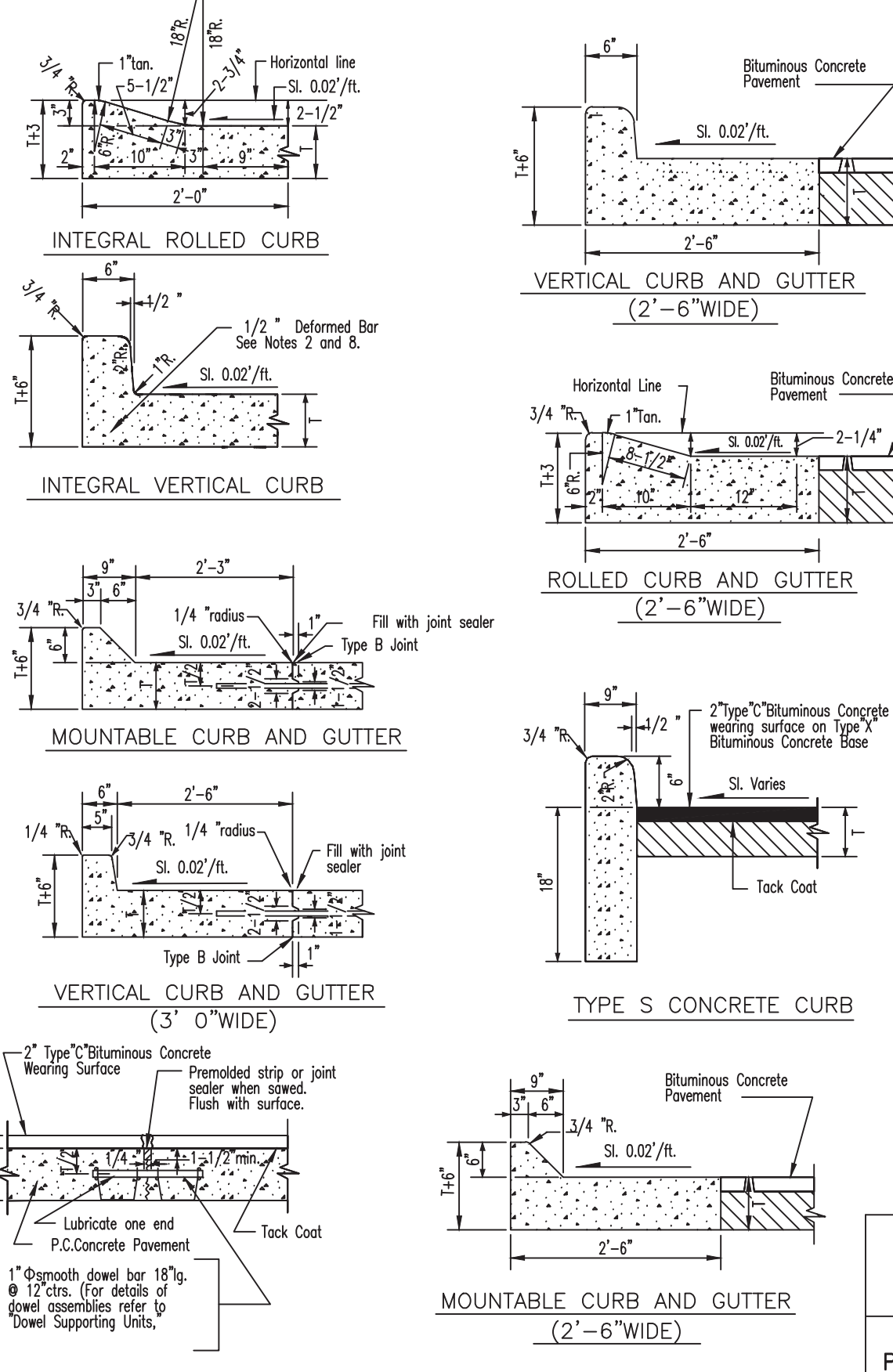
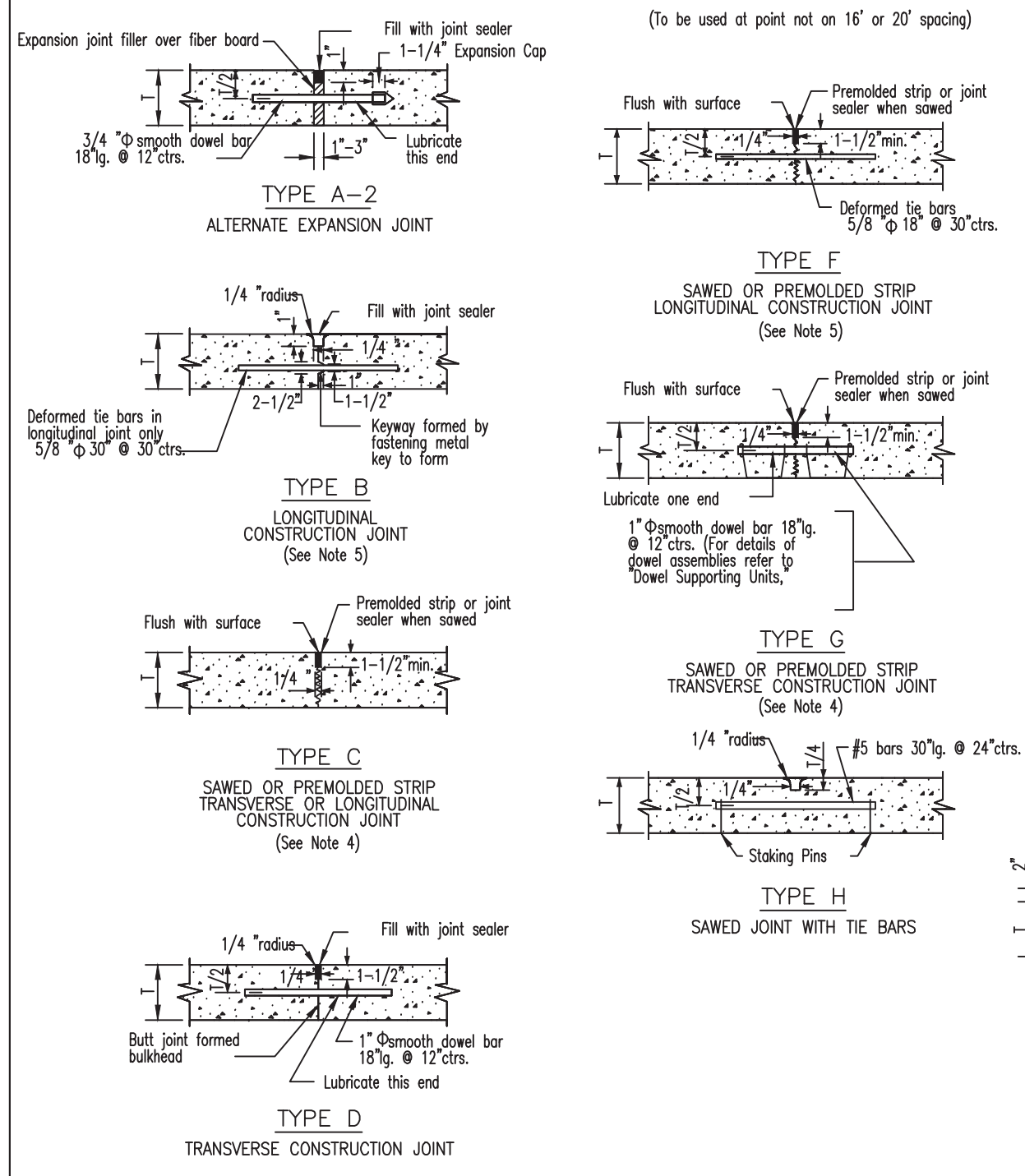
NOTE
Joint filler material shall meet ASTM designations as follows:
Blumitious type ASTM D-994-53
Non extruding & resilient blumitious type (fiber) ASTM D-1751-60T
Non extruding & resilient non blumitious type (rubber) ASTM D-5249

NOTE
Joint sealant material shall meet ASTM and MSHTO designations as follows:
ASTM D-3405 MSHTO M-301 or ASTM D-1190-74 MSHTO M-173-84 or latest revisions thereof.



CITY OF O'FALLON
ENGINEERING DEPARTMENT
O'FALLON, MISSOURI

PAVEMENT CONSTRUCTION DETAILS
INTEGRAL ROLLED CURB AND
CONCRETE PAVEMENT
TYPICAL SECTIONS AND DETAILS



- GENERAL NOTES**
- Do not scale drawing. Follow dimensions.
 - Construction joint and tie bars may be omitted when curb is poured integral with pavement.
 - Minimum Thickness for Pavement is:
 - Blumitious Concrete Pavement Thickness = (1) (2)
 - All Residential Minor and Local Streets 6" 7-1/2"
 - Residential Collector and Non-Residential Streets 7" 9-1/2"
 - All Arterial Streets 8" 12"
 - Type "G" Transverse Joint is required for Arterial and Non-Residential Streets. Use Type "G" Transverse Joint for all others.
 - For Subdivision or Minor Streets having 6" concrete pavement 1/2" ϕ deformed tie bars 30" long at 30" centers shall be used for Type "B" Longitudinal Joints and 1/2" ϕ deformed tie bars 18" long at 30" centers shall be used for Type "F" Longitudinal Joints.
 - Refer to Pavement Construction Details for Integral Vertical Curb and Concrete Pavement Typical Sections and Details.
 - All deformed bars for joints and curbs shall be Blumitious Steel Bars conforming to A.S.T.M. 615-71 Grade 40.
 - Length of the tie bars shall equal the thickness of pavement plus the height of curb less 3" tie bars shall be placed at 24" centers.
 - Transverse or longitudinal construction joints in slip formed pavements may be made with a groove or lock if such device has been approved in advance by the Department.
 - The free end of the dowel bar for a length of at least 11 inches shall be coated with an approved graphite grease.
 - All dowel bars 18"lg. @ 12" ctrs. shall be epoxy coated.
 - Expansion joint A-2 From St. Louis County pavement construction details, shall be allowed in addition to Type A and AA expansion joints.

CITY OF O'FALLON
ENGINEERING DEPARTMENT
O'FALLON, MISSOURI

PAVEMENT CONSTRUCTION DETAILS
JOINTS AND CURBS

PROJECT TITLE:
COLUMBIA MEADOWS

ENGINEERING
PLANNING
SURVEYING

22 Point View Blvd.
St. Charles, MO 63001
636-928-5552
FAX 928-1718

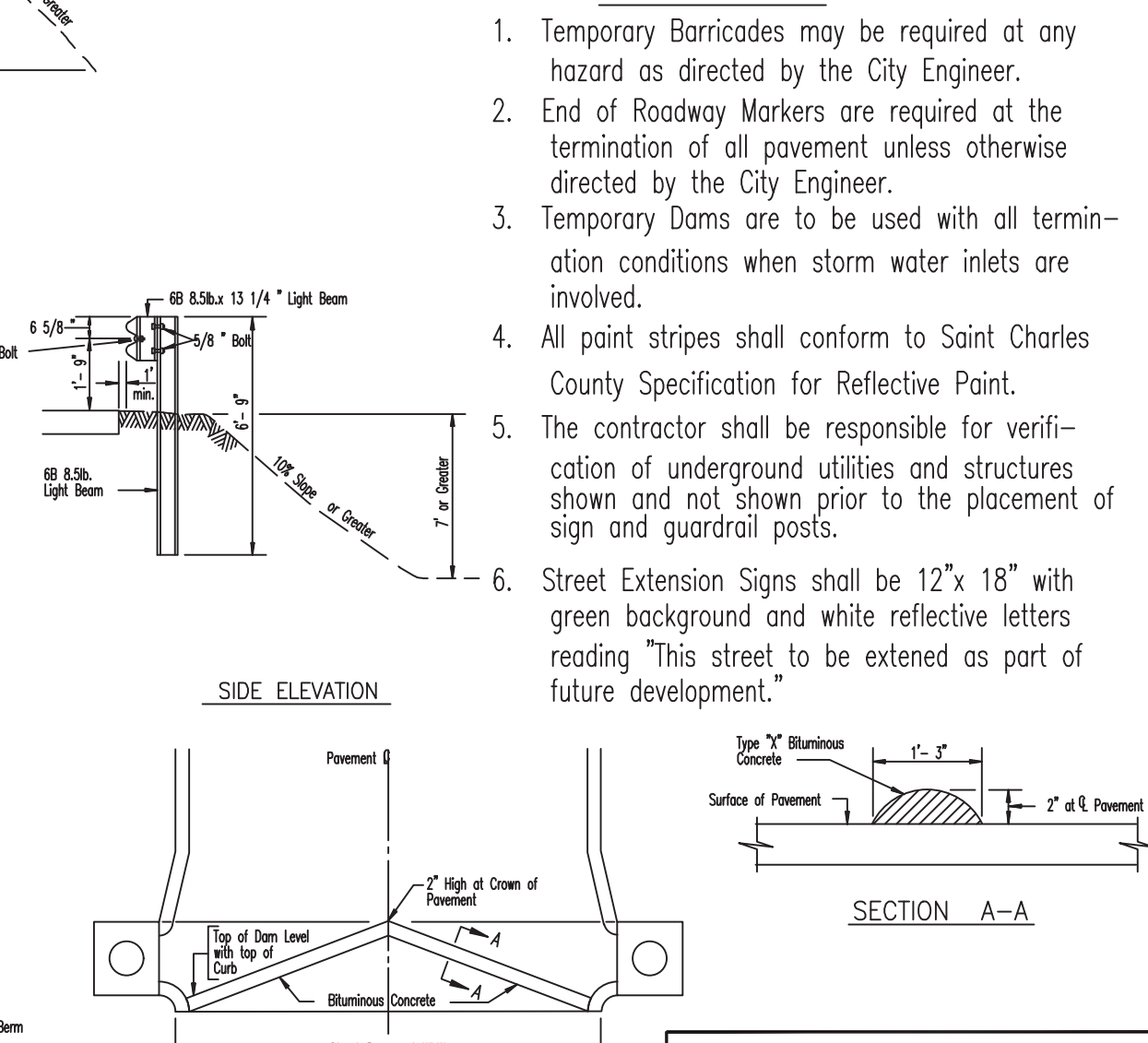
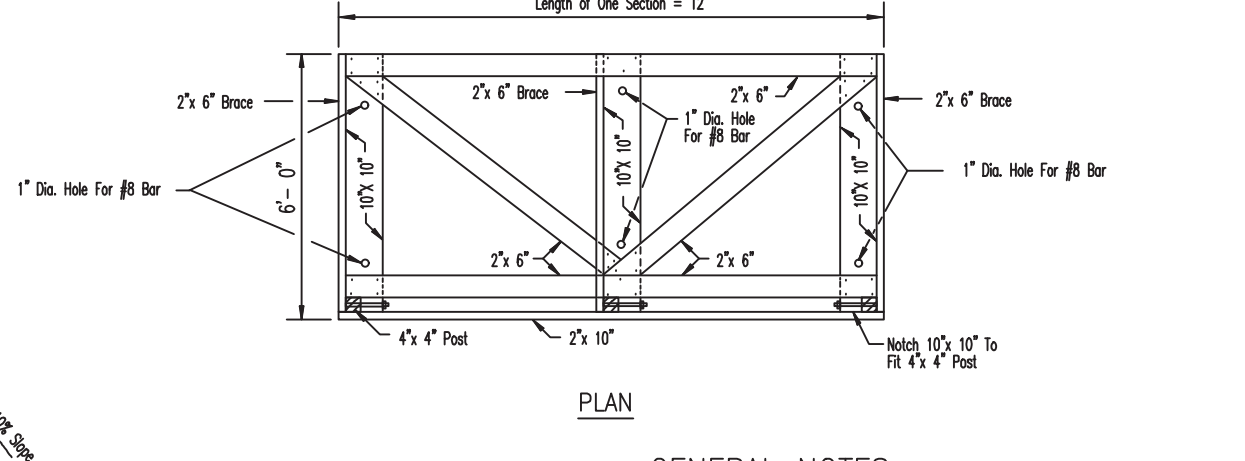
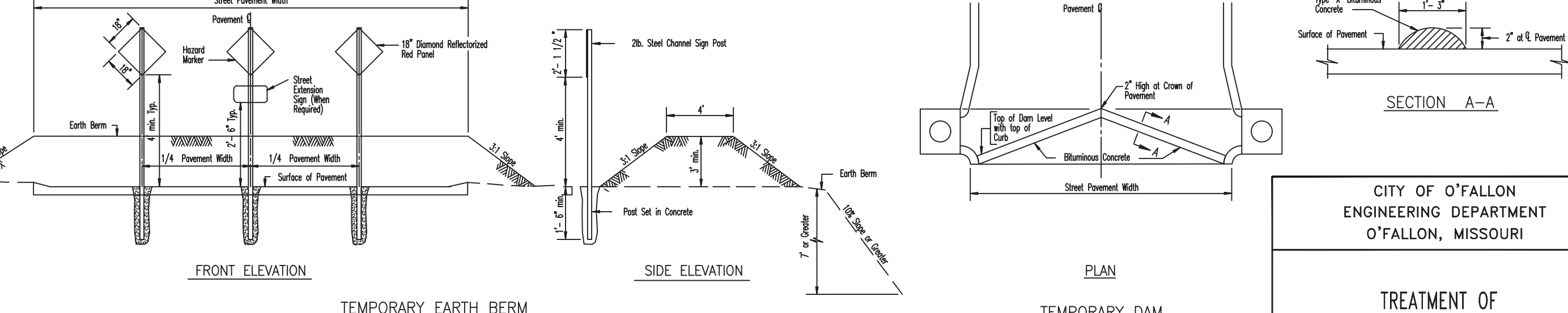
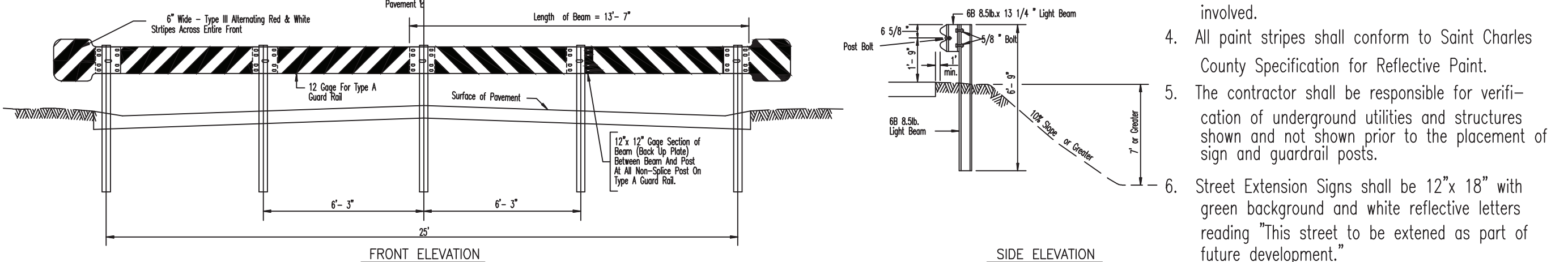
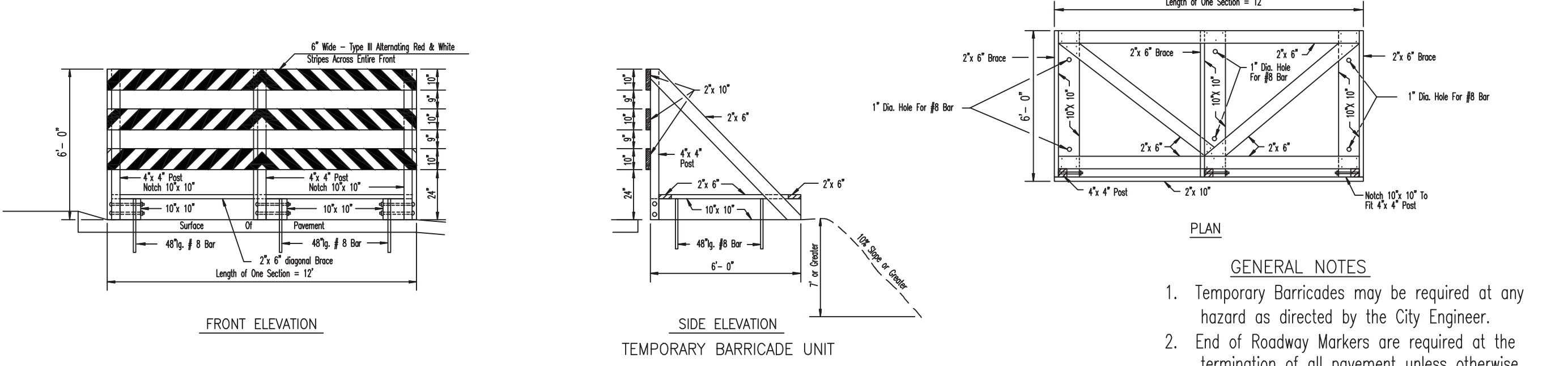
DISCLAIMER OF RESPONSIBILITY
I hereby specify that the documents intended to be authorized by my seal are limited to this sheet, and I hereby disclaim any responsibility for all other drawings, specifications, estimates, reports or other documents or instruments relating to or intended to be used for any part or parts of the architectural or engineering project or survey.

Box Project # 18-7484 Issue Date: 08/12/2020



REVISIONS

NO.	DATE	REVISION
10/13/20		CITY COMMENTS
01/08/21		CITY COMMENTS
02/10/21		CITY COMMENTS
02/23/21		CITY COMMENTS



- GENERAL NOTES**
- Temporary Barricades may be required at any hazard as directed by the City Engineer.
 - End of Roadway Markers are required at the termination of all pavement unless otherwise directed by the City Engineer.
 - Temporary Dams are to be used with all termination conditions when storm water inlets are involved.
 - All point stripes shall conform to Saint Charles County Specification for Reflective Paint.
 - The contractor shall be responsible for verification of underground utilities and structures shown and not shown prior to the placement of sign and guardrail posts.
 - Street Extension Signs shall be 12"x 18" with green background and white reflective letters reading "This street to be extended as part of future development."

CITY OF O'FALLON
ENGINEERING DEPARTMENT
O'FALLON, MISSOURI

TREATMENT OF
TEMPORARY TERMINATIONS
OF ROADWAY PAVEMENT

Developer / Owner:
Alpha Land Development Two, L.L.C.
612 Trade Center Boulevard
Chesterfield, MO 63005
314-721-7779

PAVEMENT DETAILS

P+Z No. #19-004868
Approval Date: 07/23/2020
City No. #?

Page No.
31 of 38

ENGINEERS SEAL DOES NOT APPLY TO CITY OF O'FALLON DETAILS ON THIS SHEET.