

ARCTURIS

Planning Architecture Interiors Technology Facilities
 1910 PINE STREET SAINT LOUIS, MO 63103
 T 314.258.7100 F 314.251.9801

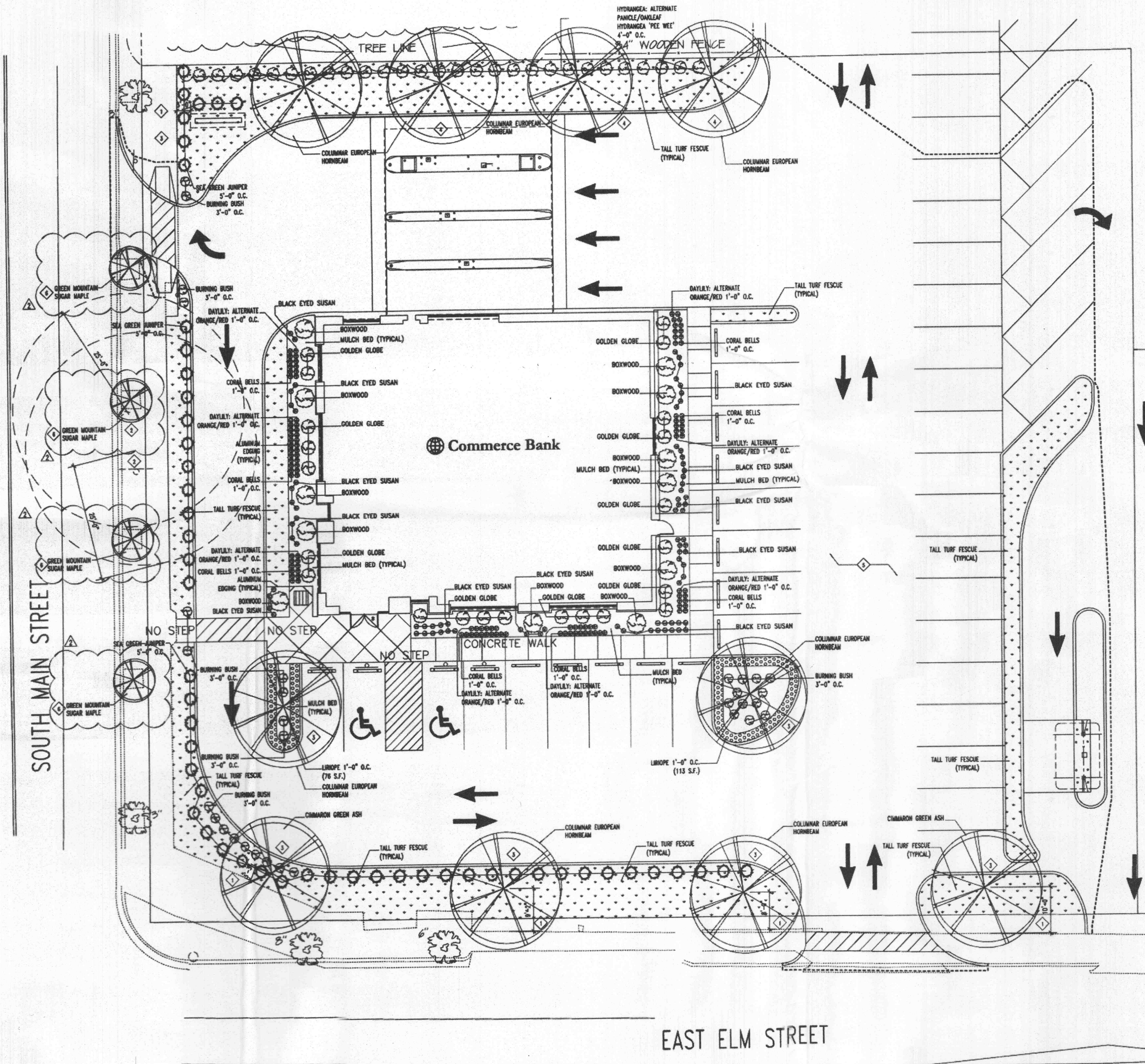
CHIEF ENGINEER
 B&B Engineering - (314) 288-5552

STRUCTURAL ENGINEER
 Joff Consulting Engineers - (314) 855-0224

MECHANICAL ENGINEER
 Solutions AEC - (314) 995-6299

ELECTRICAL ENGINEER
 Solutions AEC - (314) 995-6299

PLUMBING ENGINEER
 Solutions AEC - (314) 995-6299



PLANT SCHEDULE

QUANTITY	BOTANICAL NAME	COMMON NAME	SIZE/REMARKS
8	CARPINUS BETULUS 'ASTIGATA'	COLUMNAR EUROPEAN HORNBREAM	2" CALIPER
2	FRAXINUS PENNSYLVANICA 'CINMIZAN'	CINNAMON GREEN ASH	2" CALIPER
12	BUXUS x 'GREEN MOUNTAIN'	BOXWOOD, VARIETY: GREEN MOUNTAIN	5 GALLON
31	EVONYMUS ALATUS 'RUBY HAAR'	BURNING BUSH, VARIETY: RUBY HAAR	2 GALLON
26	HEMEROCALLIS 'BALTIMORE ORIOLE'	DAYLILY, VARIETY: ORANGE	1 GALLON
26	HEMEROCALLIS 'PARDON ME'	DAYLILY, VARIETY: RED	1 GALLON
80	HEUCHERA 'BLACK BEAUTY'	CORAL BELLS, VARIETY: BLACK BEAUTY	1 GALLON
14	HYDRANGEA PANICULATA	PANICLE HYDRANGEA	3 GALLON
14	HYDRANGEA QUERCIFOLIA 'PEE WEE'	PEE WEE OAK LEAF HYDRANGEA	3 GALLON
189 S.F.	LIRIOPE MUSCARI		1 GALLON
78	RUDBECKIA HIRTA 'PRARIE SUN'	BLACK EYED SUSAN	1 GALLON
22	THUJA OCCIDENTALIS 'GOLDEN GLOBE'	GOLDEN GLOBE ARBORVITAE	1 GALLON
52	JUNIPERUS x PYTZERIANA 'SEA GREEN'	SEA GREEN JUNIPER	3 GALLON
	TALL TURF FESCUE	SOD	
4	ACER SACCHARINUM	GREEN MOUNTAIN SUGAR MAPLE	2" CALIPER

GENERAL NOTES:

1. PROVIDE SOD FOR ALL AREAS BETWEEN CURBS AND FROM STREET TO STREET.
2. ALL LAWN AND LANDSCAPED AREAS TO BE IRRIGATED.
3. PROVIDE SLEEVES FOR IRRIGATION PIPING FOR AREAS BELOW PAVING IN ACCORDANCE WITH SPECIFICATIONS.
4. PROVIDE MULCH BED AROUND ALL LANDSCAPED AREAS.
5. CONFORM TO CITY OF OFALLON ARTICLE 12: LANDSCAPING AND SCREENING REGULATIONS

KEYED NOTES:

- ◆ TREES NOT TO BE PLANTED CLOSER THAN 3'-0" TO CURB
- ◆ TREES NOT TO BE PLACED WITHIN 25'-0" OF STREET LIGHT.
- ◆ PROVIDE (1) TREE FOR EVERY FORTY FEET (40'-0") OF STREET FRONTAGE. EAST ELM STREET: 214'-0", MAIN STREET: 164'-0", TOTAL STREET FRONTAGE: 388'-0" / 40'-0" = 10 TREES.
- ◆ PROVIDE (1) TREE FOR EVERY 3,000 S.F. OF LANDSCAPED OPEN SPACE. 6,000 S.F. / 3,000 S.F. = 2 ADDITIONAL TREES.
- ◆ PROVIDE A MINIMUM OF 8% LANDSCAPING OF THE INTERIOR OF PARKING AREA. LOTS: 10,300 S.F. - BUILDING: 4,827 = 5,473 S.F. ÷ 8% = 68,412 S.F. 68,412 S.F. / 3,000 S.F. = 22.8 LANDSCAPING PROVIDED.
- ◆ PROVIDE NEW REPLACEMENT STREET TREES @ EXISTING PLANTING AREAS

No.	Date	Description
	10-22-07	OWNER REVIEW
	11-16-07	PERMIT / BID SET
	02-11-08	REV#2 - CITY COMMENT

Project Number: 08-1401.01
 Sheet Title: Landscape Plan

L-101

Sheet Number: 1 of 1