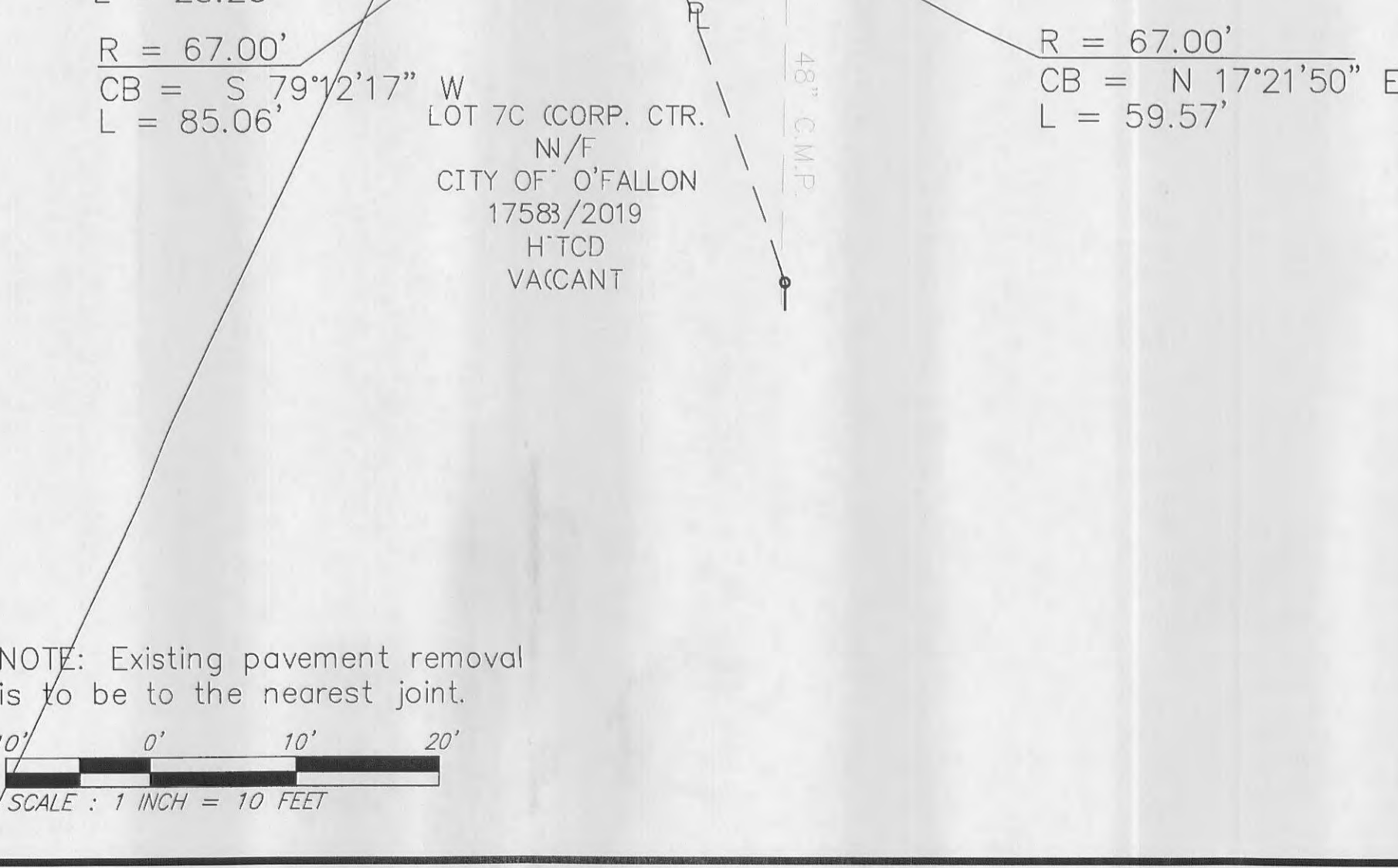
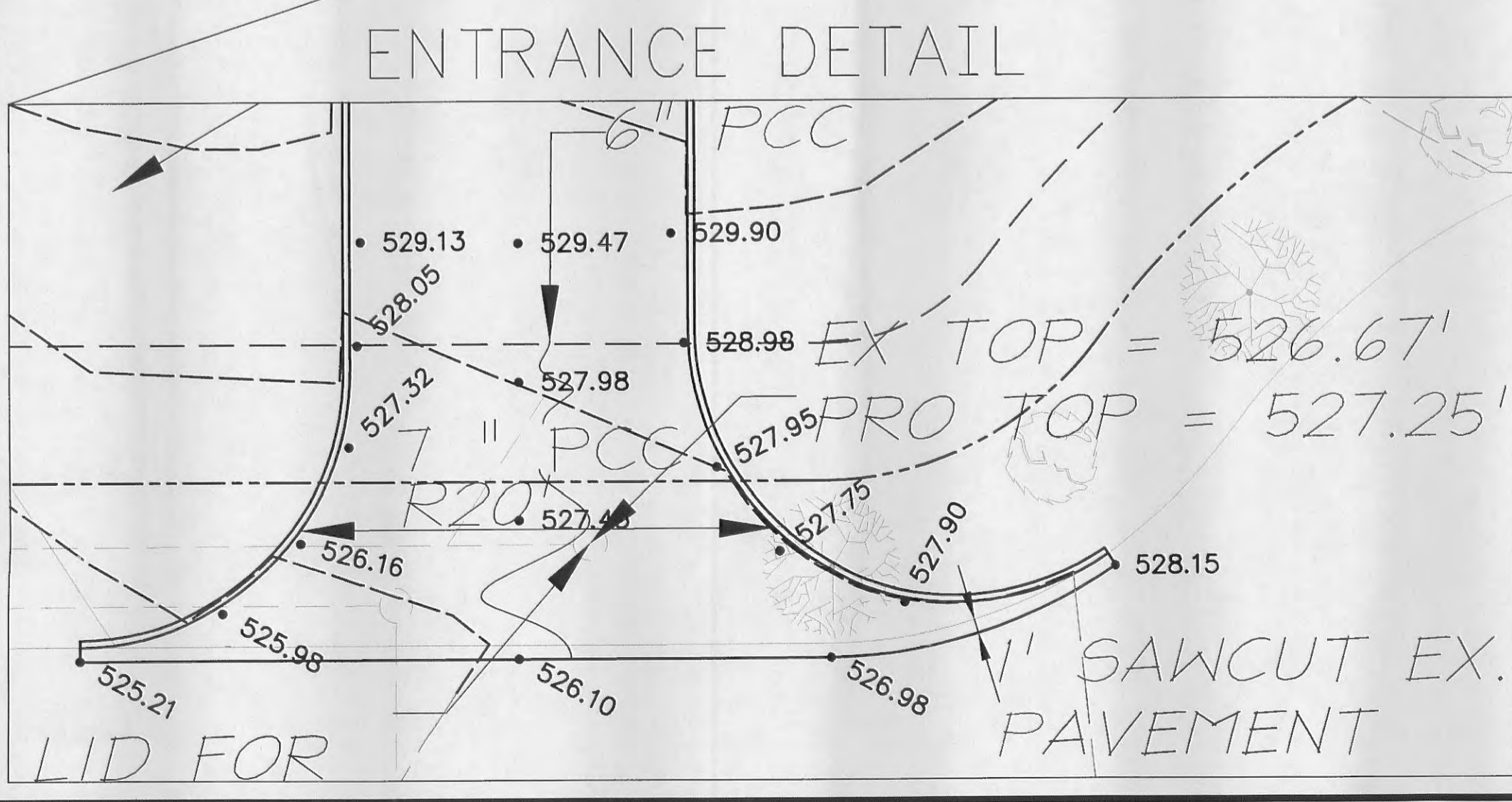
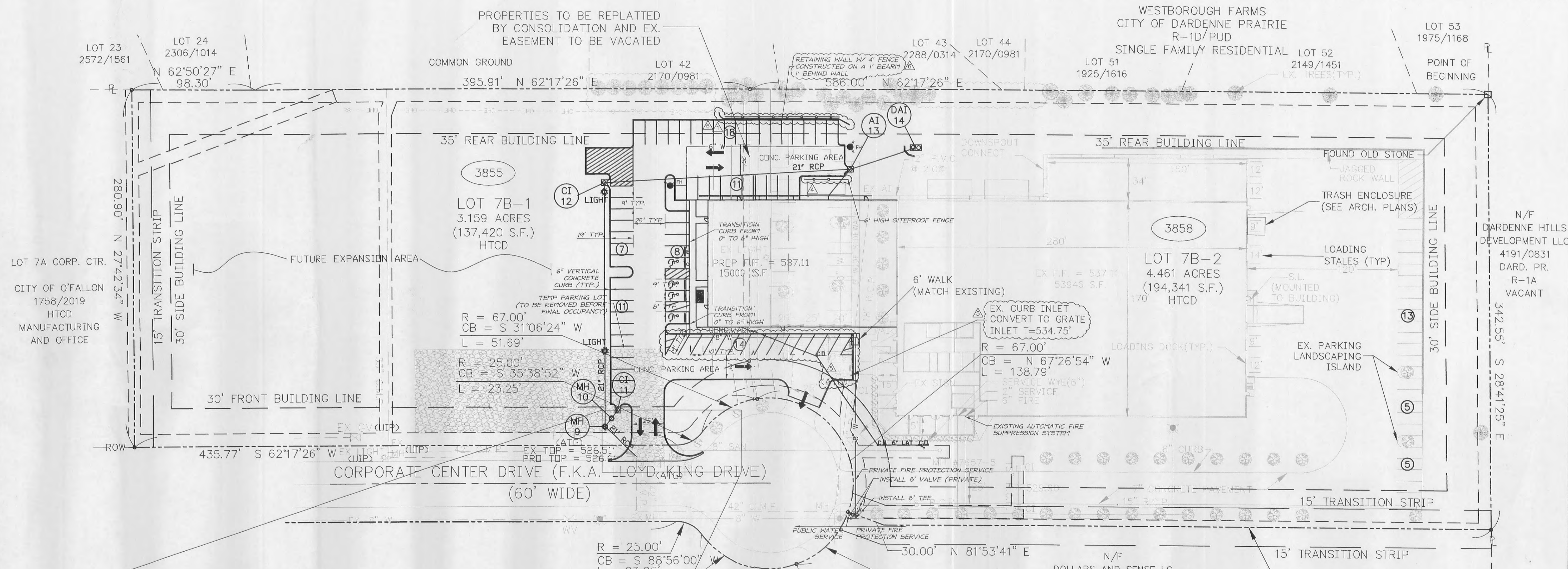
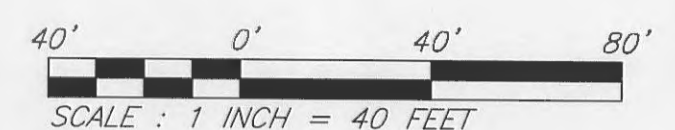


SITE PLAN FOR COMPONENT BAR PRODUCTS BUILDING EXPANSION

GBA GEORGE BUTLER ASSOCIATES, INC. Engineers / Architects Kansas City, Mo. / Lenexa, Ks. / O'Fallon, Mo. / Wichita, Ks.		DATE: SEPTEMBER 2007	
		DESIGN BY: JJC	
		DRAWN BY: MSA	
		PROJECT NO.: 11333	
		SHEET NO.	TOTAL SHEETS
COMPONENT BAR BUILDING EXPANSION		2	11
NO.	DATE	DESCRIPTION	BY
▲	8/22/07	160 LB KEYSTONE RETAINING WALL AT THE BACK OF CURB	MSA
▲	8/22/07	CHANGED PROPOSED TREES NORTH OF THE PARKING LOT	MSA
▲	8/22/07	REMOVED PROPOSED FENCE ALONG ON NORTH PROPERTY LINE	MSA
▲	8/22/07	ADDED SITEPROOF FENCING	MSA
▲	9/17/07	MODIFIED PARKING LOT LAYOUT AND INLET	MSA
▲	9/17/07	ADDED RETAINING WALL FENCE AND FENCE DETAIL	MSA



NOTE: Existing pavement removal is to be to the nearest joint.

SCALE: 1 INCH = 10 FEET

NOTE: Existing underground and overhead utilities and drainage structures have been plotted from available information and their locations must be considered approximate only. It is the responsibility of the contractor to notify the utility companies and to verify the locations of existing utilities before actual construction begins. Any discrepancies should be reported to the engineer immediately.

THIS TRACT IS SERVED BY:
 Sewers - Duckett Creek Sanitary District - 441-1244
 Water - St. Charles County Public Water District #2 - 561-3737
 Electric - Amaran U.E. - 1-800-552-7583
 Gas - St. Charles Gas Company - 946-8937
 Telephone - AT&T - 949-1323
 Fire - Cottleville Fire Protection District - 447-6655

