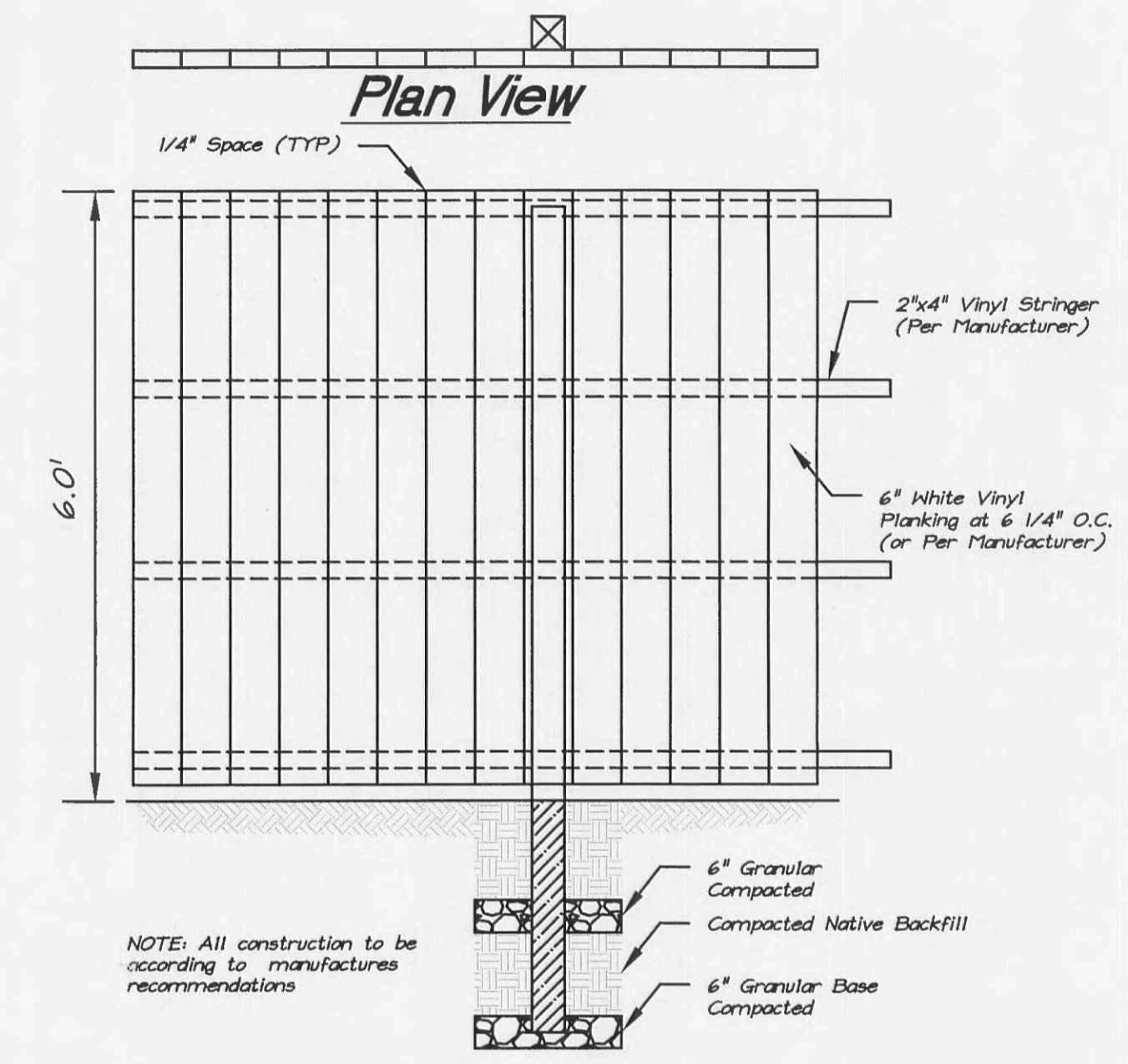


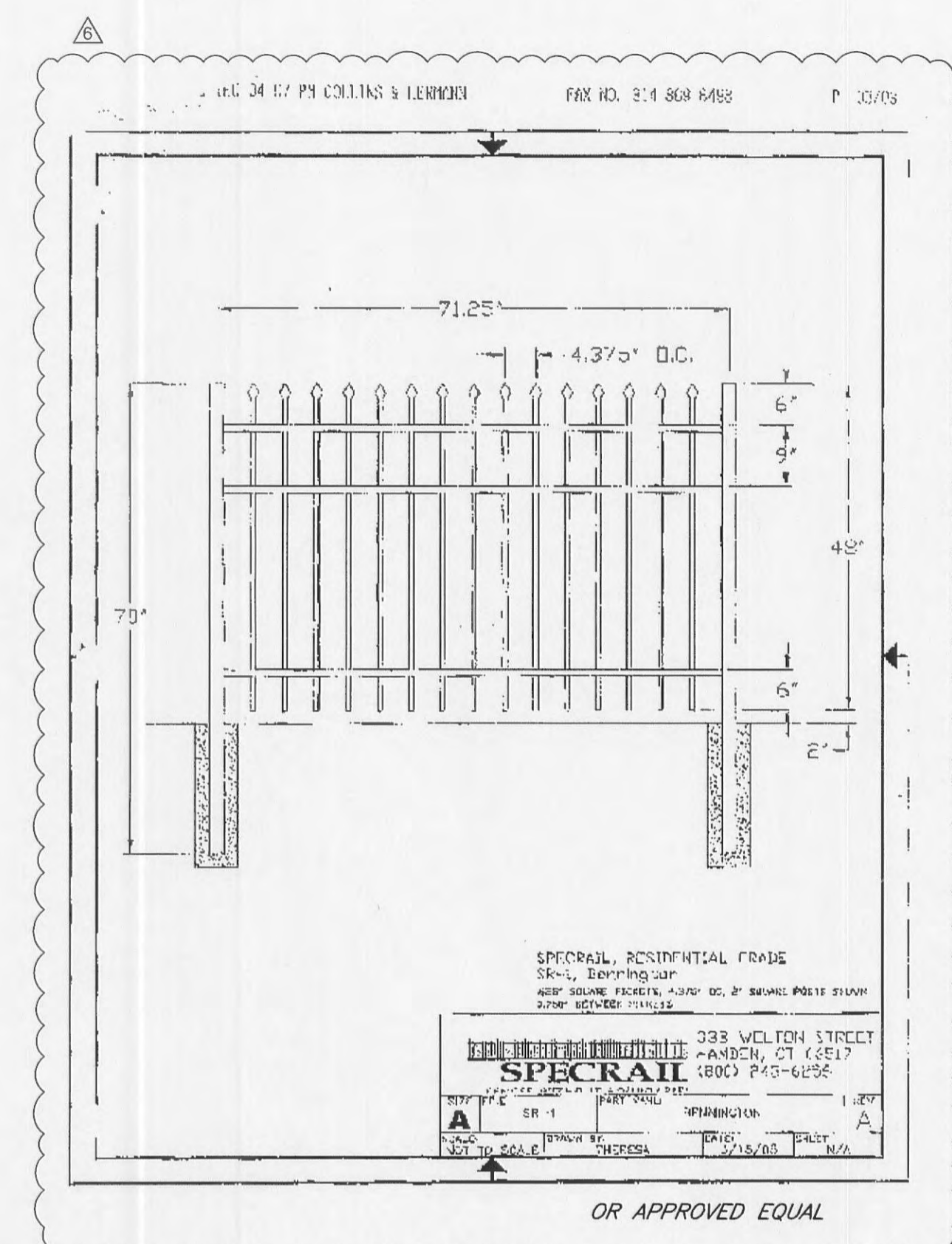
DETAILS FOR COMPONENT BAR PRODUCTS BUILDING EXPANSION

GBA GEORGE BUTLER ASSOCIATES, INC. Engineers / Architects Kansas City, Mo. / Lenexa, Ks. / O'Fallon, Mo. / Wichita, Ks.		DATE: SEPTEMBER 2007 DESIGN BY: JJC DRAWN BY: MSA PROJECT NO.: 11333
COMPUTER BAR BUILDING EXPANSION		SHEET NO. 10 TOTAL SHEETS 11

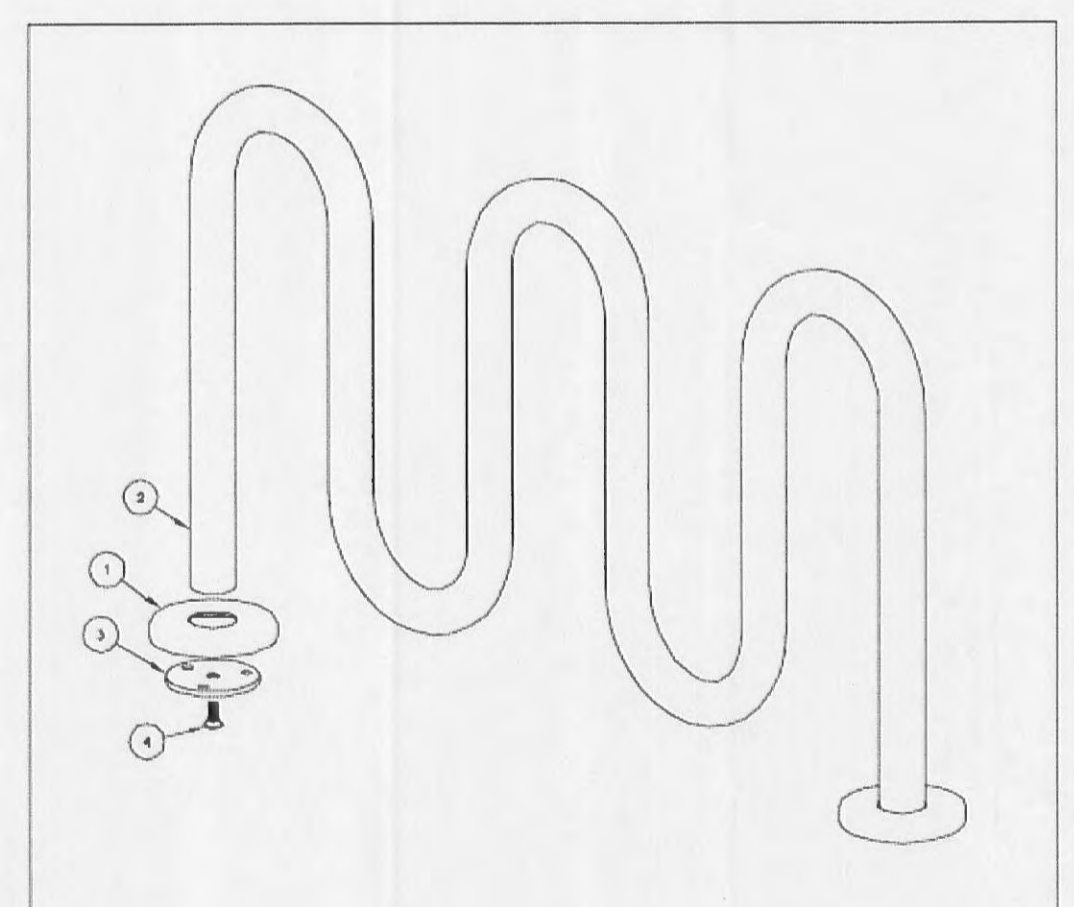
NO.	DATE	DESCRIPTION	BY
△	8/22/07	160 LB KEYSTONE RETAINING WALL AT THE BACK OF CURB	MSA
△	8/22/07	CHANGED PROPOSED TREES NORTH OF THE PARKING LOT	MSA
△	8/22/07	REMOVED PROPOSED FENCE ALONG ON NORTH PROPERTY LINE	MSA
△	8/22/07	ADDED SITEPROOF FENCING	MSA
△	9/17/07	MODIFIED PARKING LOT LAYOUT AND INLET	MSA
△	9/17/07	ADDED RETAINING WALL FENCE AND FENCE DETAIL	MSA



6' High White Vinyl Privacy Fence Detail
NO SCALE



4' High Retaining Wall Fence Detail
NO SCALE



INSTALLATION FOR SURFACE MOUNT

STEP 1:

- 1 - PC BIKE LOOP, SURFACE MOUNT (2)
- 2 - PCS. 3/8\"
- 2 - PCS. 10 GA X 8\"
- 2 - PCS. 5/8\" X 1 1/2\" SS FLT SKT HD CAP SCREW (4)

SLIDE 10 GA X 8\" DIA ANCHOR COVER (1) OVER BIKE LOOP, SURFACE MOUNT (2) LEDS. ATTACH 1/8\" THICK SURFACE MOUNT PLATE (3) TO BIKE LOOP, SURFACE MOUNT (3) USING HARDWARE (4).

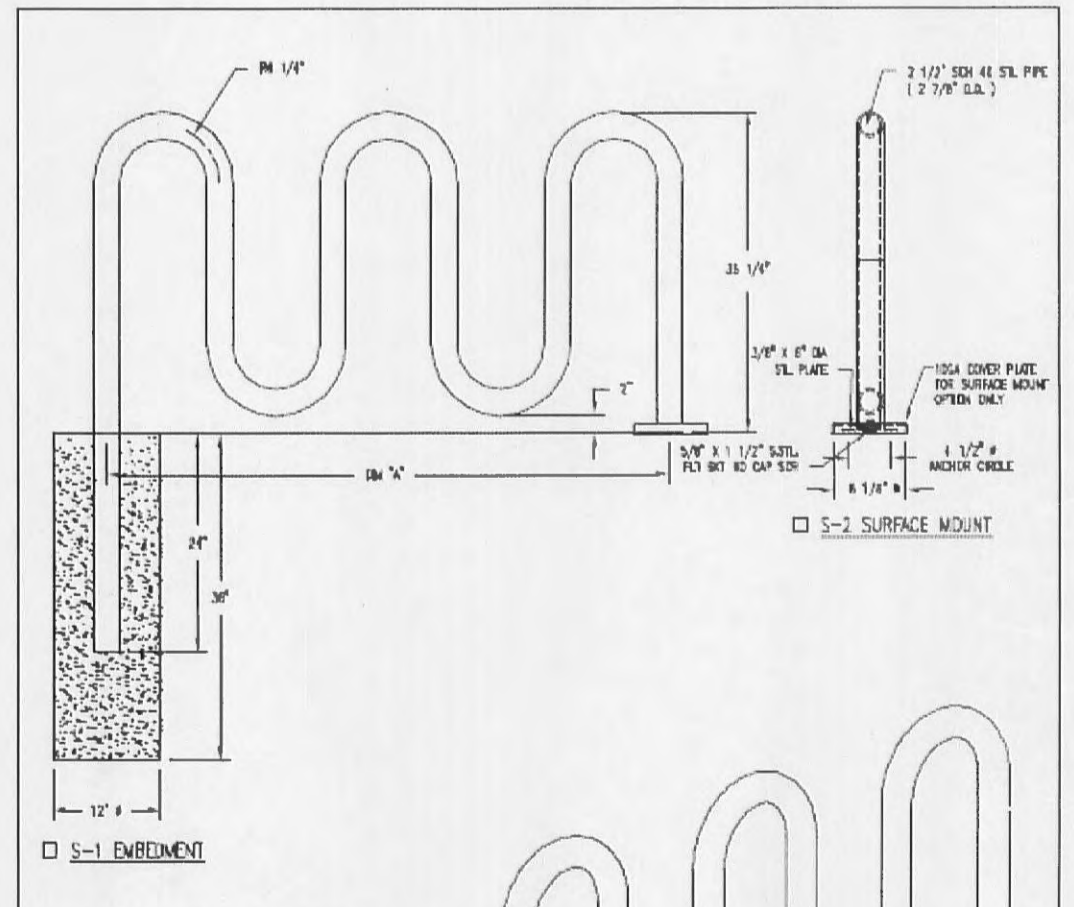
STEP 2:

ANCHOR ACCORDINGLY.

SCALE: NONE
DATE: 12/18/06
REV. BY: S. ESK

BIKE RACK ASSEMBLY

DuMor, inc.
P.O. Box 142 Milltown, PA 17059-0142



INSTALLATION FOR SLAB FLOOR
SAME AS SURFACE MOUNT BUT DO NOT USE 10 GA X 8\"

MODEL NO.	PEAKS	IN W\"
125-20	2	37 1/2\"
125-30	3	67 1/2\"
125-40	4	97 1/2\"
125-50	5	127 1/2\"

FINISH OPTIONS:

- HOT DIPPED GALVANIZED
- COATED W/ ZINC RICH EPOXY THEN FINISHED W/ POLYESTER POWDER COATING.

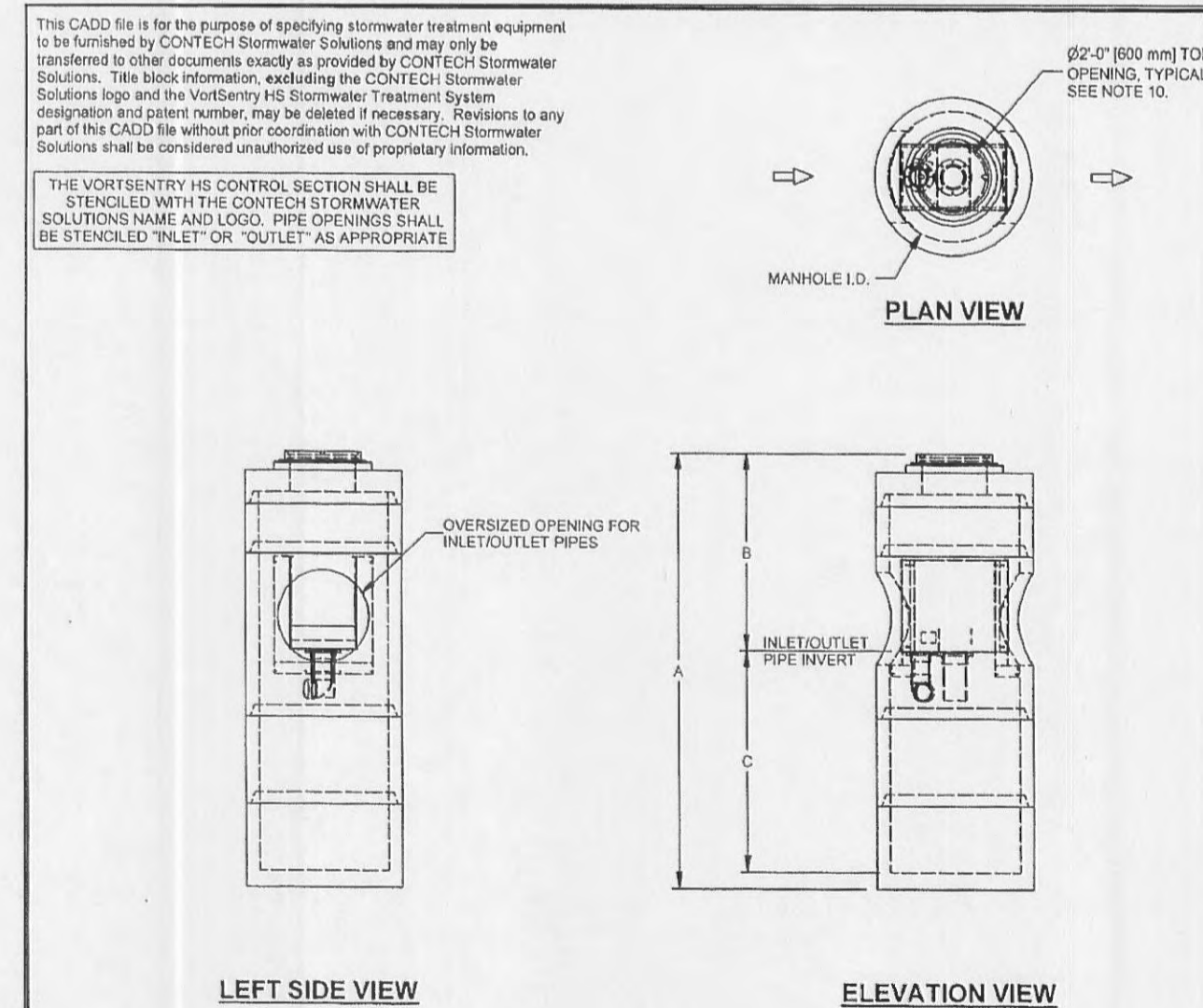
NOTE:

1-1/2\" X 3-3/4\" EXPANSION ANCHOR BOLTS PROVIDED FOR OPTION S-2.

SCALE: NONE
DATE: 12/18/06
REV. BY: S. ESK

BIKE RACK

DuMor, inc.
P.O. Box 142 Milltown, PA 17059-0142



FOR INFORMATIONAL PURPOSES ONLY - NOT INTENDED FOR CONSTRUCTION

VortSentry Model	Manhole Diameter (ID)		Total Treatment Flow Rate		Typical Total Distance Rim to Outside Bottom		Typical Distance Rim to Invert		Typical Depth Below Invert (Inside)		Approximate Minimum Distance Rim to Invert (See Note 8)		Maximum Pipe Diameter (ID)	
	ft	mm	cfs	l/s	ft	m	ft	m	ft	m	ft	m	in	mm
HS48	4	1200	1.20	34.0	13.50	4.11	6.00	1.83	7.00	660	4.00	1.22	24	600
HS72	6	1800	3.70	104.8	16.26	4.96	6.75	2.06	8.84	890	5.09	1.55	36	900
HS96	8	2400	8.10	229.4	20.92	6.38	8.50	2.59	11.59	890	6.17	1.88	48	1200

NOTES:

- STORMWATER TREATMENT SYSTEM (SWTS) SHALL REMOVE 80% OF A SEDIMENT GRADATION WITH AN AVERAGE PARTICLE SIZE OF 240 MICRONS AT THE DESIGNATED TREATMENT FLOW RATE LISTED IN THE TABLE FOR EACH CORRESPONDING MODEL.
- SWTS REMOVAL EFFICIENCY CLAIM SHALL BE CORROBORATED BY FULL SCALE LABORATORY TEST PERFORMANCE DATA.
- SWTS MAINTENANCE RECOMMENDATIONS SHALL BE SUPPORTED BY FULL SCALE WASH-OUT TESTING.
- SWTS SHALL PROVIDE INTERNAL BYPASS OF FLOWS THAT EXCEED THE TREATMENT FLOW RATE.
- SWTS MAXIMUM HYDRAULIC CAPACITY MAY VARY DEPENDING UPON THE INLET PIPE DIAMETER, MATERIAL AND SLOPE.
- SWTS INVERTS IN AND OUT SHALL BE AT THE SAME ELEVATION.
- PIPE SIZE MAY BE SMALLER THAN THE MAXIMUM PIPE SHOWN ON THE TABLE. SEE SITE PLAN FOR PIPE SIZE.
- MINIMUM RIM TO INVERT DISTANCE MAY BE REDUCED DEPENDING UPON ACTUAL PIPE DIAMETER. CONTACT CONTECH STORMWATER SOLUTIONS FOR SITE SPECIFIC INFORMATION.
- PURCHASER SHALL NOT BE RESPONSIBLE FOR ASSEMBLY OF INTERNAL COMPONENTS.
- MANHOLE FRAMES AND COVERS SUPPLIED WITH SYSTEM, NOT INSTALLED. SWTS MAY ALSO HAVE A GRATED INLET COVER (NOT SHOWN).
- PURCHASER TO PREPARE EXCAVATION AND PROVIDE LIFTING EQUIPMENT.
- VORTSENTRY HS BY CONTECH STORMWATER SOLUTIONS. PORTLAND, OR (503) 648-4807. SCARBOROUGH, ME (603) 807-8976. LINTHICUM, MD (856) 740-3318.

SCALE: NONE
DRAWN: INDG
CHECKED: GWB
FILE NAME: VSHSTYP.TBL
DATE: 10/27/06

CONTECH STORMWATER SOLUTIONS
contechstormwater.com

