

DEPTH IN FEET	DESCRIPTION OF MATERIAL	UNIT DRY WEIGHT	STANDARD PENETRATION RESISTANCE	WATER CONTENT	SHRINKAGE
0-10	Fill: Stiff, brown, silty clay - (CL)	104	10	18	12
10-15	Very stiff to hard, brown and gray clay with silt - (CH)	104	15	18	12
15-20	hard, brown silt - ML	104	20	18	12
20-25	ROCK	104	25	18	12
25-30	Auger refusal at 9 feet	104	30	18	12

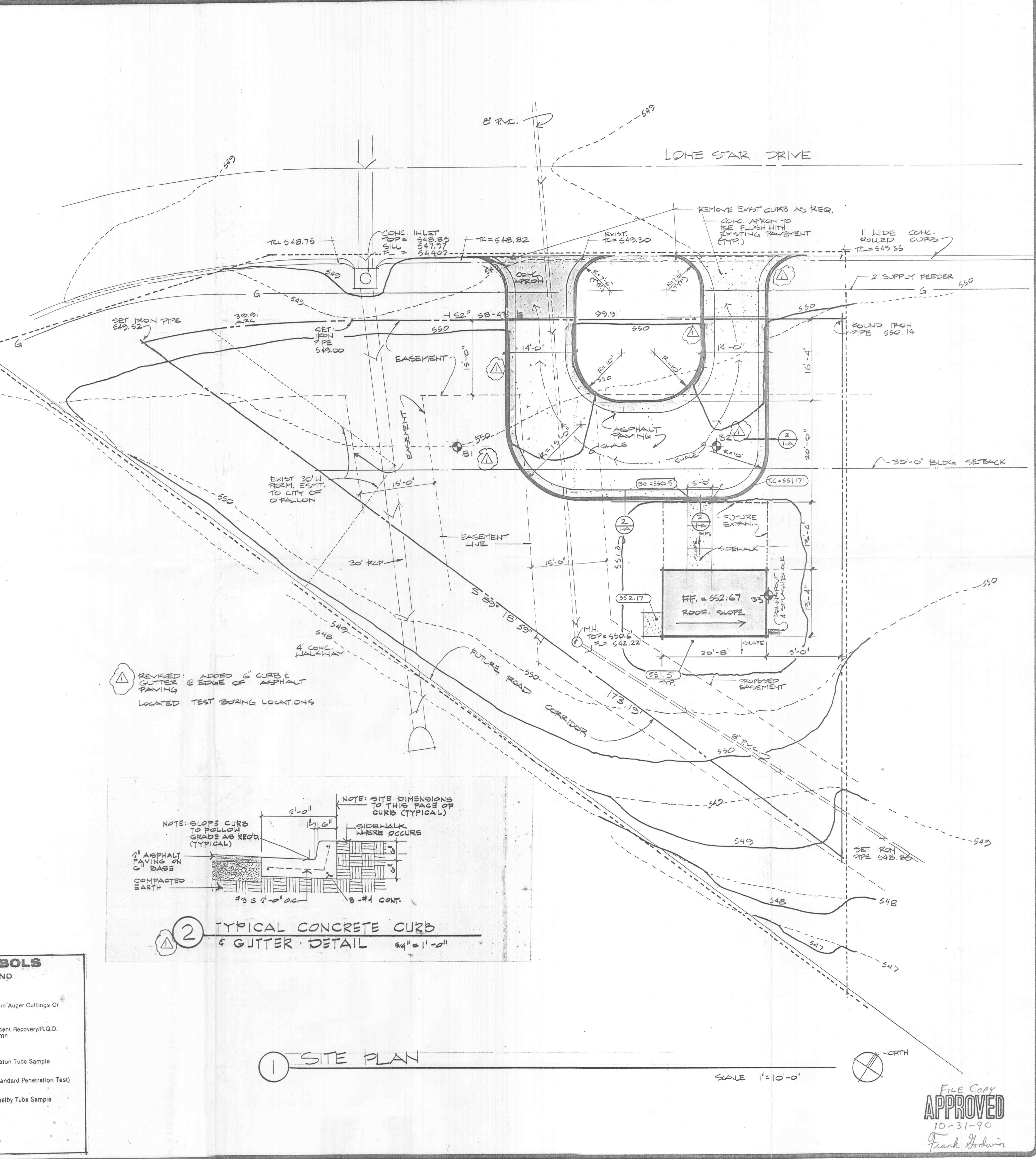
DEPTH IN FEET	DESCRIPTION OF MATERIAL	UNIT DRY WEIGHT	STANDARD PENETRATION RESISTANCE	WATER CONTENT	SHRINKAGE
0-5	Very stiff to hard, brown and gray clay with silt, trace fine gravel - (CH)	109	10	18	12
5-10	Hard, brown silt - ML	109	15	18	12
10-15	ROCK	109	20	18	12
15-20	Boring terminated at 9.5 feet	109	25	18	12

DEPTH IN FEET	DESCRIPTION OF MATERIAL	UNIT DRY WEIGHT	STANDARD PENETRATION RESISTANCE	WATER CONTENT	SHRINKAGE
0-5	hard, brown and gray to reddish-brown, clay with silt - (CH)	98	10	18	12
5-10	hard, brown silt - ML	98	15	18	12
10-15	ROCK	98	20	18	12
15-20	Boring terminated at 9 feet	98	25	18	12

DEPTH IN FEET	DESCRIPTION OF MATERIAL	UNIT DRY WEIGHT	STANDARD PENETRATION RESISTANCE	WATER CONTENT	SHRINKAGE
0-5	Very stiff to hard, brown and gray clay with silt - (CH)	109	10	18	12
5-10	Hard, brown silt - ML	109	15	18	12
10-15	ROCK	109	20	18	12
15-20	Boring terminated at 9.5 feet	109	25	18	12

DEPTH IN FEET	DESCRIPTION OF MATERIAL	UNIT DRY WEIGHT	STANDARD PENETRATION RESISTANCE	WATER CONTENT	SHRINKAGE
0-5	hard, brown and gray to reddish-brown, clay with silt - (CH)	98	10	18	12
5-10	hard, brown silt - ML	98	15	18	12
10-15	ROCK	98	20	18	12
15-20	Boring terminated at 9 feet	98	25	18	12

DEPTH IN FEET	DESCRIPTION OF MATERIAL	UNIT DRY WEIGHT	STANDARD PENETRATION RESISTANCE	WATER CONTENT	SHRINKAGE
0-5	hard, brown and gray to reddish-brown, clay with silt - (CH)	98	10	18	12
5-10	hard, brown silt - ML	98	15	18	12
10-15	ROCK	98	20	18	12
15-20	Boring terminated at 9 feet	98	25	18	12

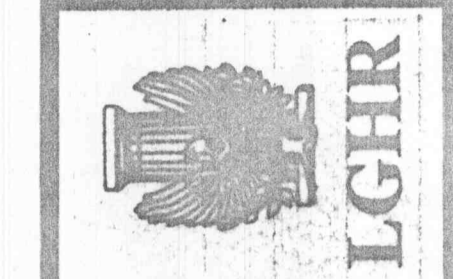
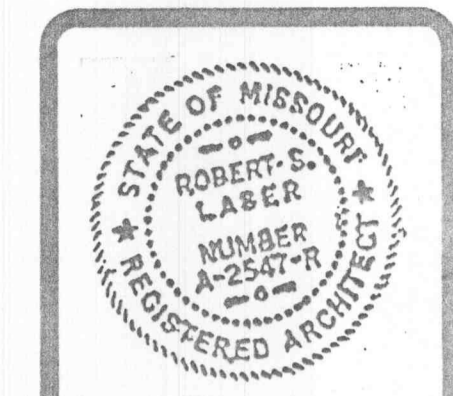


SHEET NO.	CATEGORY	DESCRIPTION
1	A	SITE PLAN SURVEY (for bidders information only)
2	A	FLOOR PLAN AND ELEVATIONS
3	A	SECTIONS AND DETAILS
1	E	ELECTRICAL PLAN

SYMBOL	DESCRIPTION
---	PROPERTY LINE
- - - -	EASEMENT LINE
---	BUILD SET BACK
---	EXISTING GRADE
---	NEW GRADE
---	PROJECT GRADING LIMITS & LIMITS OF WORK
100.0	NEW SPOT ELEVATION
+100.0	EXIST SPOT ELEV.
X	NEW FENCE
[Hatched Box]	NEW BUILDING
[Dotted Box]	CONCRETE
[Stippled Box]	ASPHALT PAVING

BORING LOG: TERMS AND SYMBOLS	
GENERAL NOTES	
1.	Information on each boring log is a compilation of subsurface conditions based on soil or rock classifications obtained from the logs as well as from laboratory testing of samples. The data lines on the logs may be approximate or the transition between the strata may be gradual rather than distinct. Water level measurements refer only to those observed at the limits and places indicated, and may vary with time, geologic condition or construction activity.
2.	Relative composition and Unified Soil Classification designations are based on visual estimates and are approximate only. If laboratory tests were performed to classify the soil, the unified designation is shown in parentheses.
3.	Value given in Unit Dry Weight/SPT Column is either a unit dry weight in pounds per cubic foot, if indicated, to a ST sample designation, or blows per inch increments, if adjacent to a SS sample designation.
LEGEND	
CS	Continuous Sampler
GB	Grab Sample Taken From Auger Cuttings Or Wash Water Return
NX	NX Rock Core with Percent Recovery/R.Q.D. Given in Adjacent Column
PST	Three Inch Diameter Piston Tube Sample
SS	Split Spoon Sample (Standard Penetration Test)
ST	Three Inch Diameter Shelby Tube Sample
*	Sample Not Recovered
BV	Field Vane Test
ABBREVIATIONS	
UU/2	Shear Strength from Unconfined Compression Test (ASTM D2166)
QU/2	Shear Strength from Unconfined Compression Test (ASTM D2166)
SV	Shear Strength from Field Vane (ASTM D2673)
PL	Plastic Limit (ASTM D4318)
LL	Liquid Limit (ASTM D4318)

REVISIONS	BY
REVISION	10/23/90



LASER GUEST HENDRICK & REDDICK, INC.
 ARCHITECTS - PLANNERS
 607 GARRISON, SUITE 800
 FIRST NATIONAL BANK BLDG., FORT SMITH, AR 72901
 (501) 782-4665

PROJECT: O'FALLON / REMOTE
 DRAWING: SITE PLAN
 TITLE: CONTEL SYSTEMS OF MO.
 COMPANY: O'FALLON MISSOURI
 EXCHANGE:



DRAWN
CHECKED
DATE
SCALE: 1" = 10'-0"
JOB NO. 3033.64-0954-01
SHEET OF SHEETS

FILE COPY
APPROVED
 10-31-90
 Frank Adwin