

**LANDSCAPE LEGEND**

- QTY. (17) - INDICATES PROPOSED EVERGREEN OR ORNAMENTAL SHRUB (mugo pine, yew, juniper, holly, boxwoods) (spirea, forsythia, barberry, privet, lilac)
- QTY. (18) - INDICATES PROPOSED DECIDUOUS HARDWOOD TREE (Size: 3" min. caliper 1' above grade and 5' clear trunk) (ash, oak, maple, birch, sweet gum)
- QTY. (25) - INDICATES PROPOSED EVERGREEN TREE (Size: 6" MIN. (pine))
- QTY. (9) - INDICATES EXISTING TREES TO REMAIN

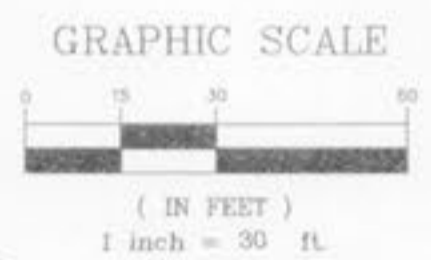
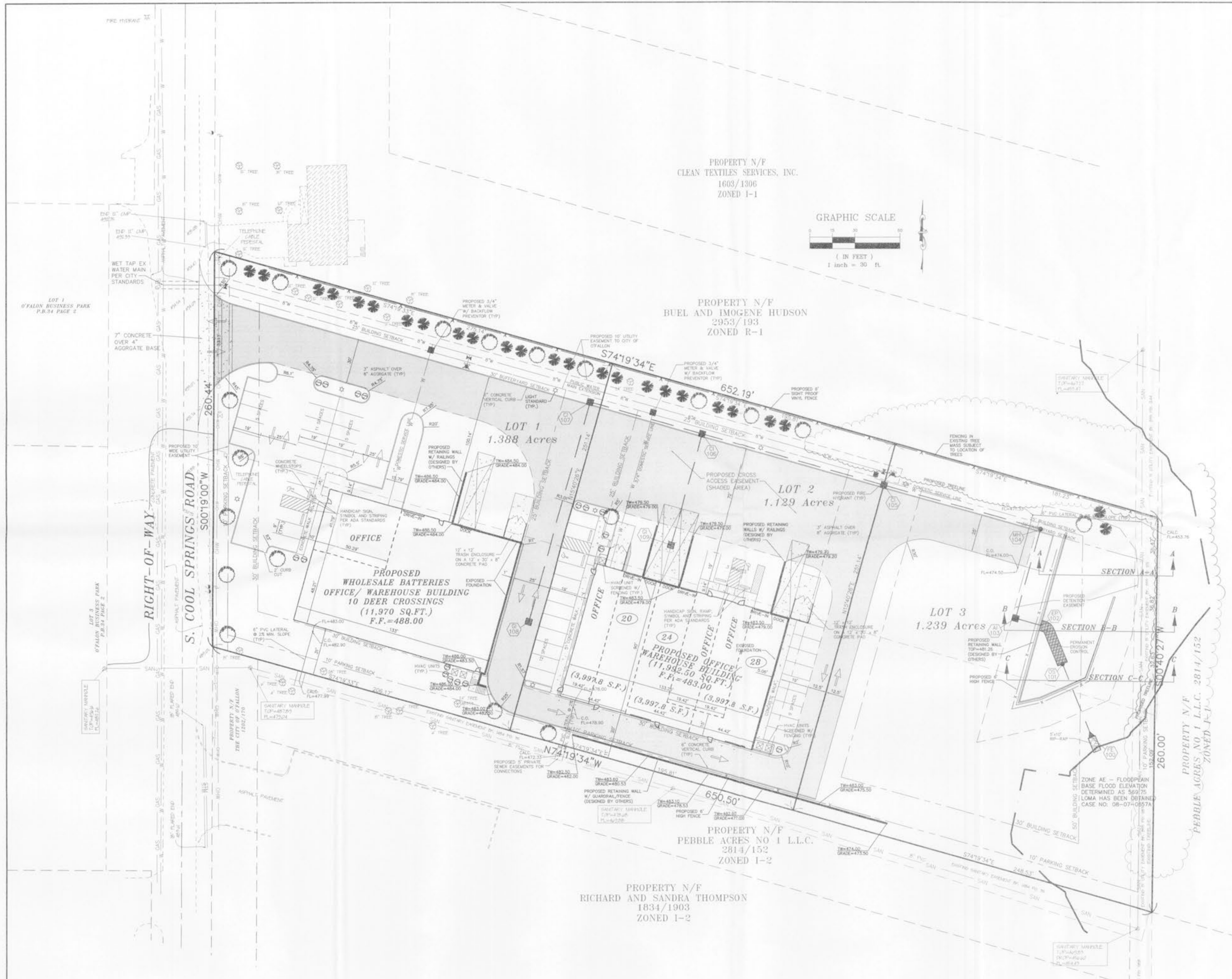
**\*\*LANDSCAPING AS DEPICTED IS SUBJECT TO FINAL\*\*  
 DESIGN BY A QUALIFIED LANDSCAPE DESIGNER**

Buffer yard landscaping requirements:  
 3 Plant Units per every 100 L.F. of adjacent residential zoning. One plant unit consists of 30 points.

Deciduous trees of a minimum of 10" in caliper are considered 50 points. Deciduous trees of a minimum of 2" in caliper and evergreens a minimum of 6" in height are considered 10 points each.

652.19/100 = 6.52 x 3 = 19.56 Units ~ 586.8 points  
 (Length of entire development abutting residential)

5 deciduous at or over 10" x 50 points = 250 points  
 34 evergreen at or over 6" x 10 points = 340 points  
 Total points = 590 = 19.67 units



UNDERGROUND UTILITIES HAVE BEEN PLOTTED FROM AVAILABLE INFORMATION AND THEREFORE THEIR LOCATIONS SHALL BE CONSIDERED APPROXIMATE ONLY. THE VERIFICATION OF THE LOCATION OF ALL UNDERGROUND UTILITIES, EITHER SHOWN OR NOT SHOWN ON THESE PLANS SHALL BE THE RESPONSIBILITY OF THE CONTRACTOR, AND SHALL BE LOCATED PRIOR TO ANY GRADING OR CONSTRUCTION OF THE IMPROVEMENTS.

E:\DWG\110500P\110500P.LIN\106290C-300 Cool Springs\Construct\section\106290C.dwg, Site 3, 7/30/2008 12:09:03 PM, Station 20 ALJ