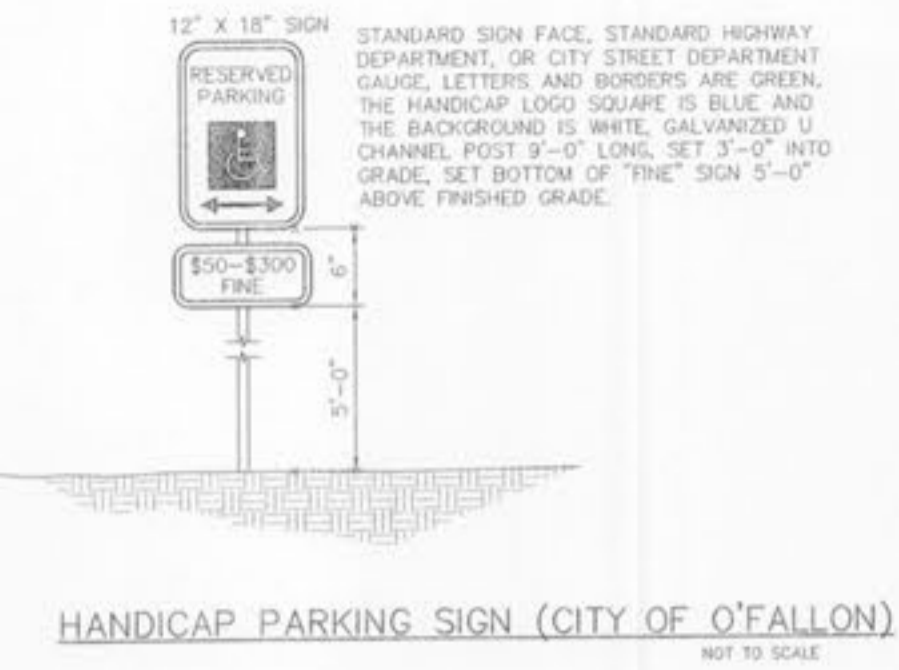
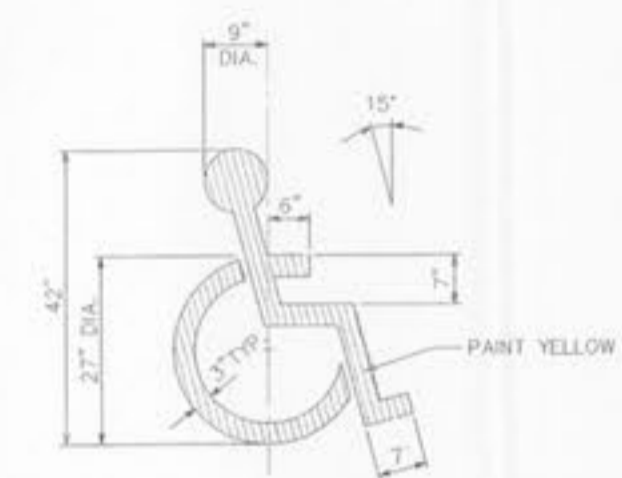


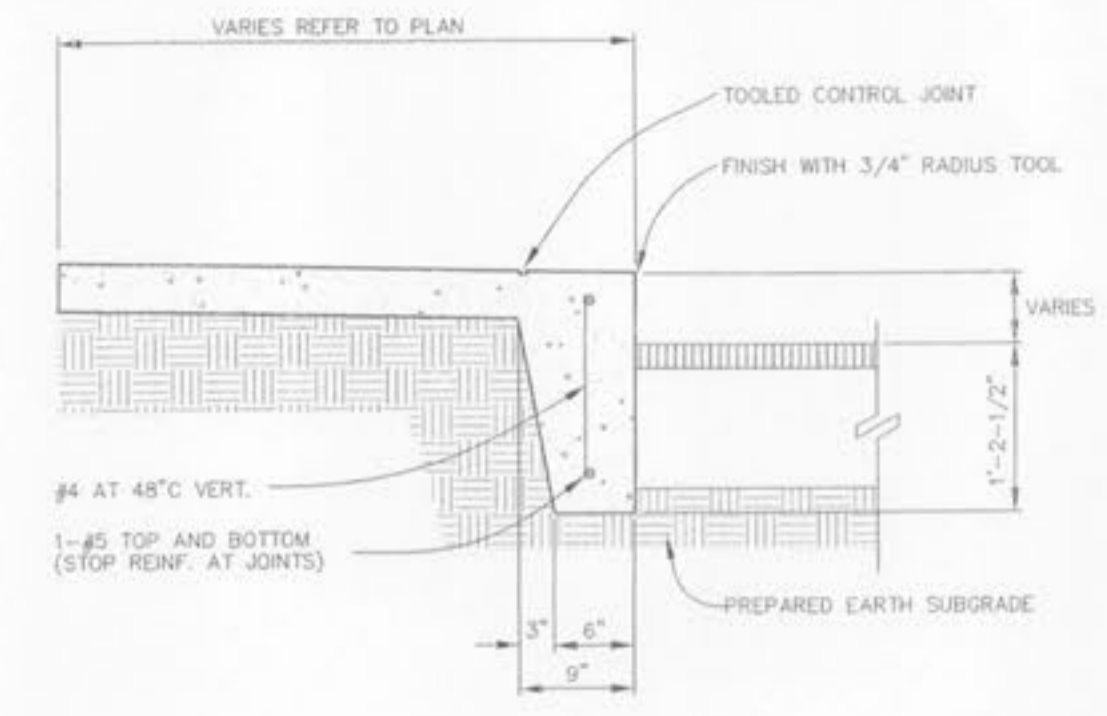
LIGHT POLE & BASE
 NOT TO SCALE



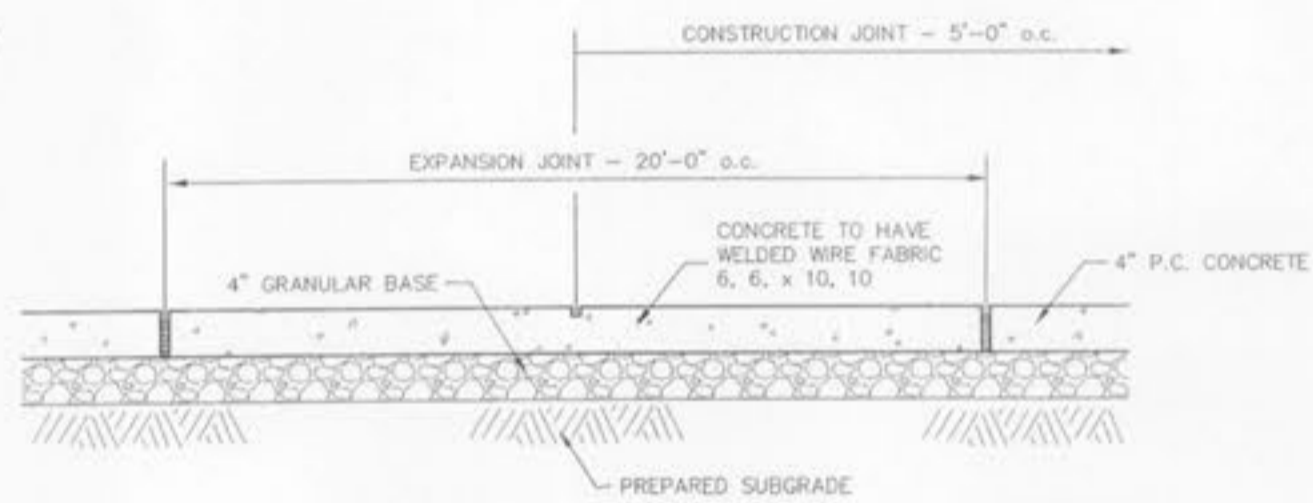
HANDICAP PARKING SIGN (CITY OF O'FALLON)
 NOT TO SCALE



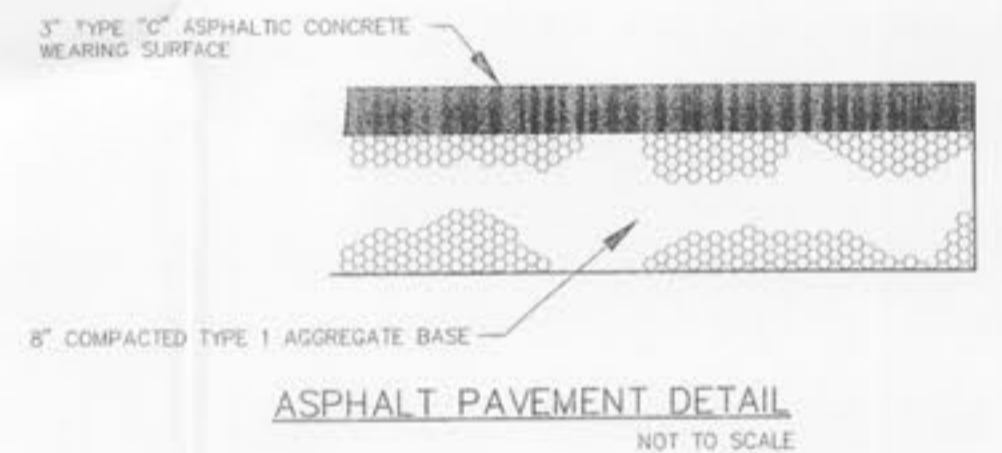
PAINTED HANDICAPPED PARKING SYMBOL
 NOT TO SCALE



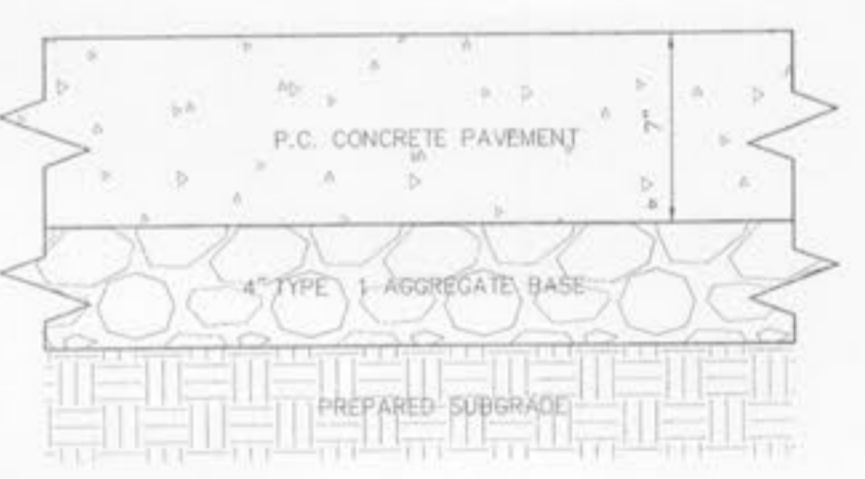
TURNDOWN CONCRETE WALK
 NOT TO SCALE



CONCRETE SIDEWALK DETAIL
 NOT TO SCALE



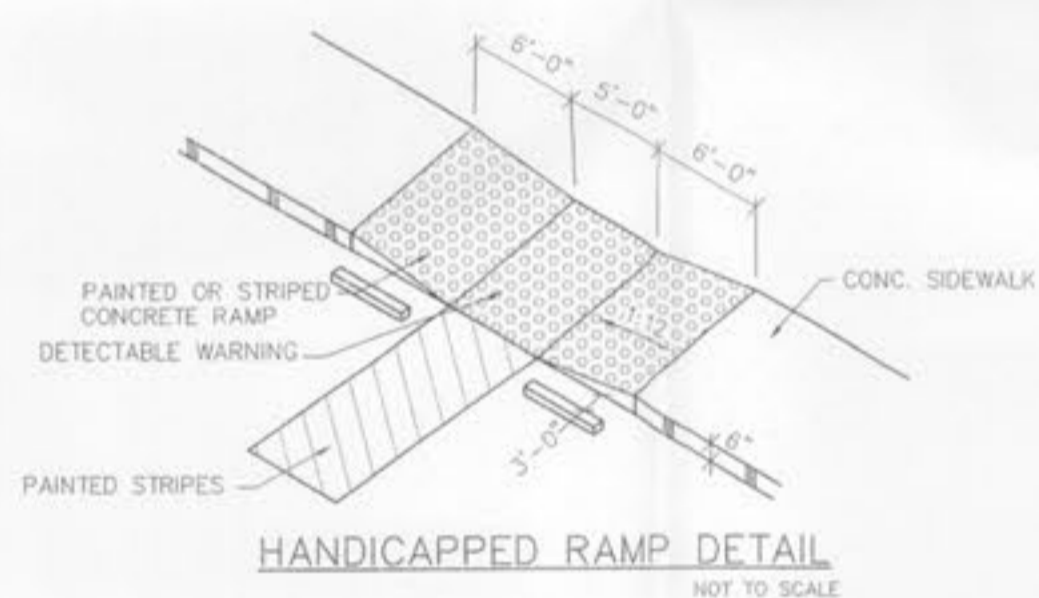
ASPHALT PAVEMENT DETAIL
 NOT TO SCALE



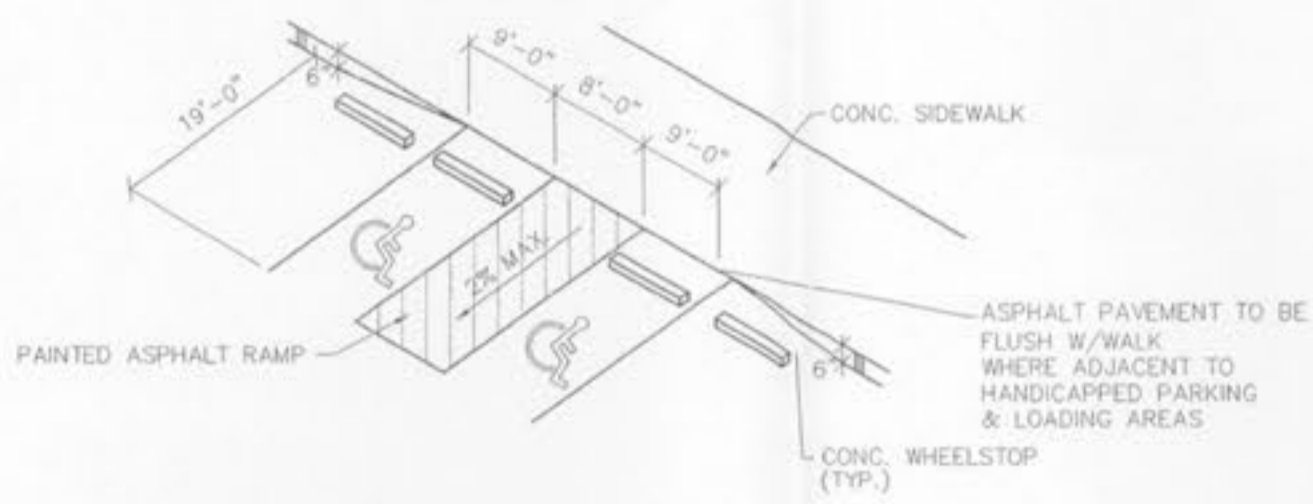
CONCRETE CURB DETAIL
 NOT TO SCALE



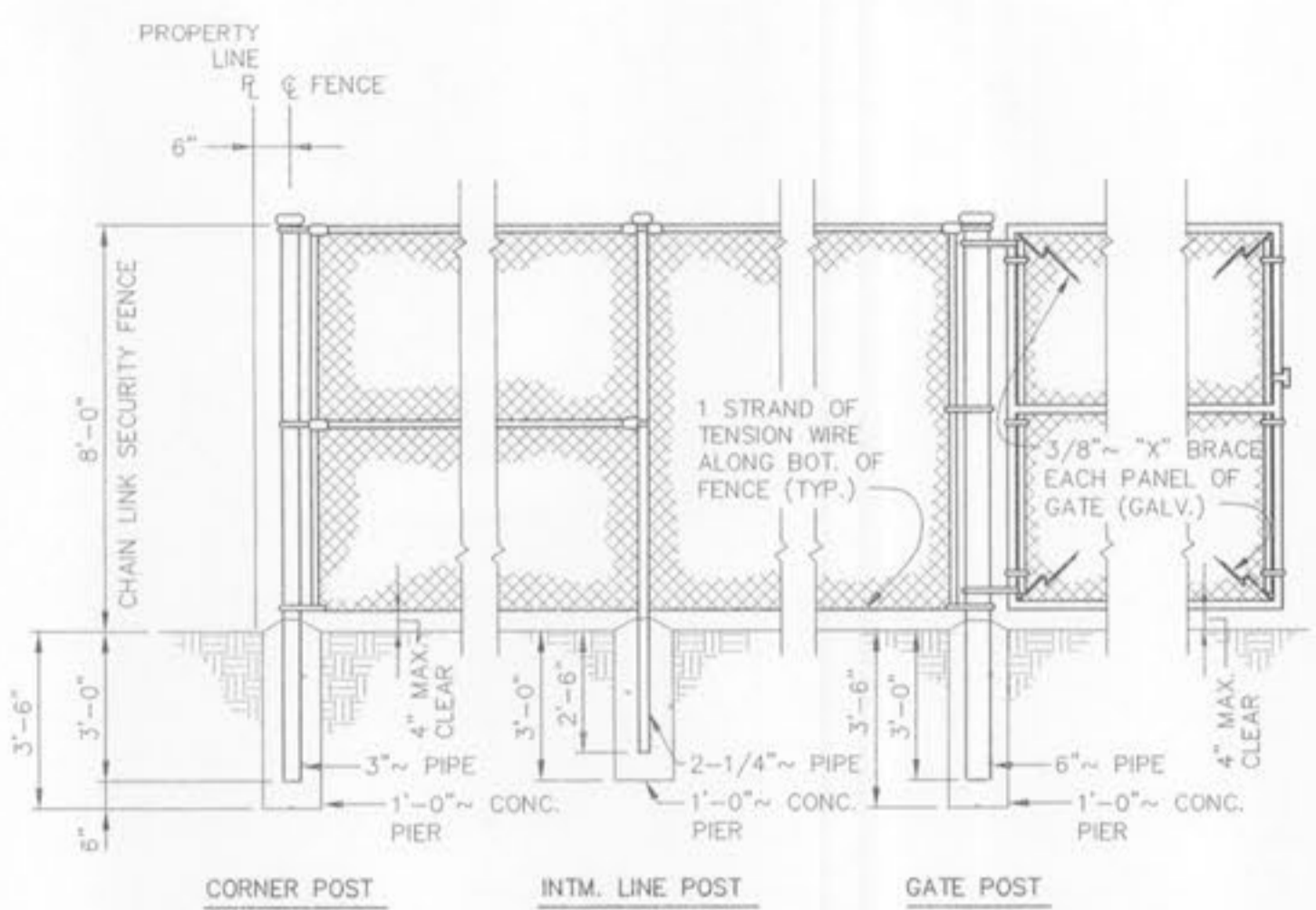
TRASH ENCLOSURE PAVEMENT DETAIL
 NOT TO SCALE



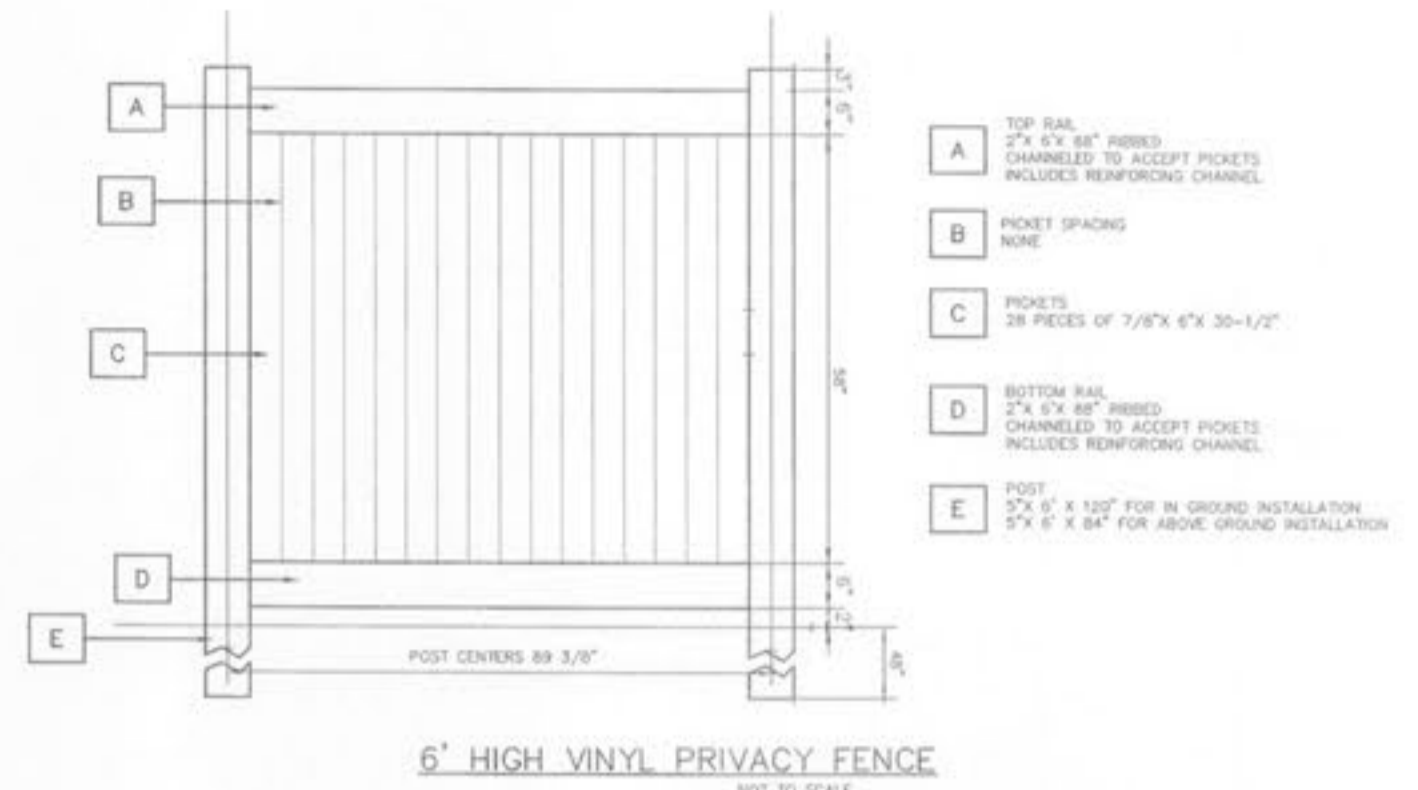
HANDICAPPED RAMP DETAIL
 NOT TO SCALE



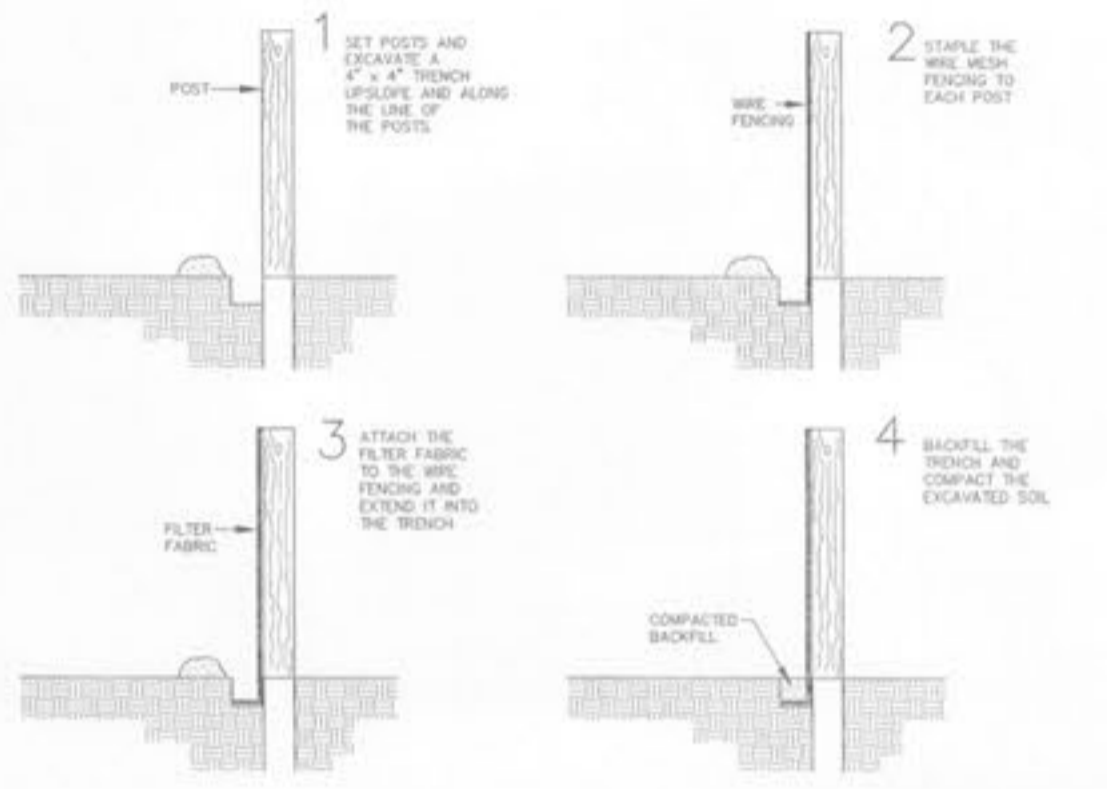
FLUSH PAVEMENT DETAIL
 NOT TO SCALE



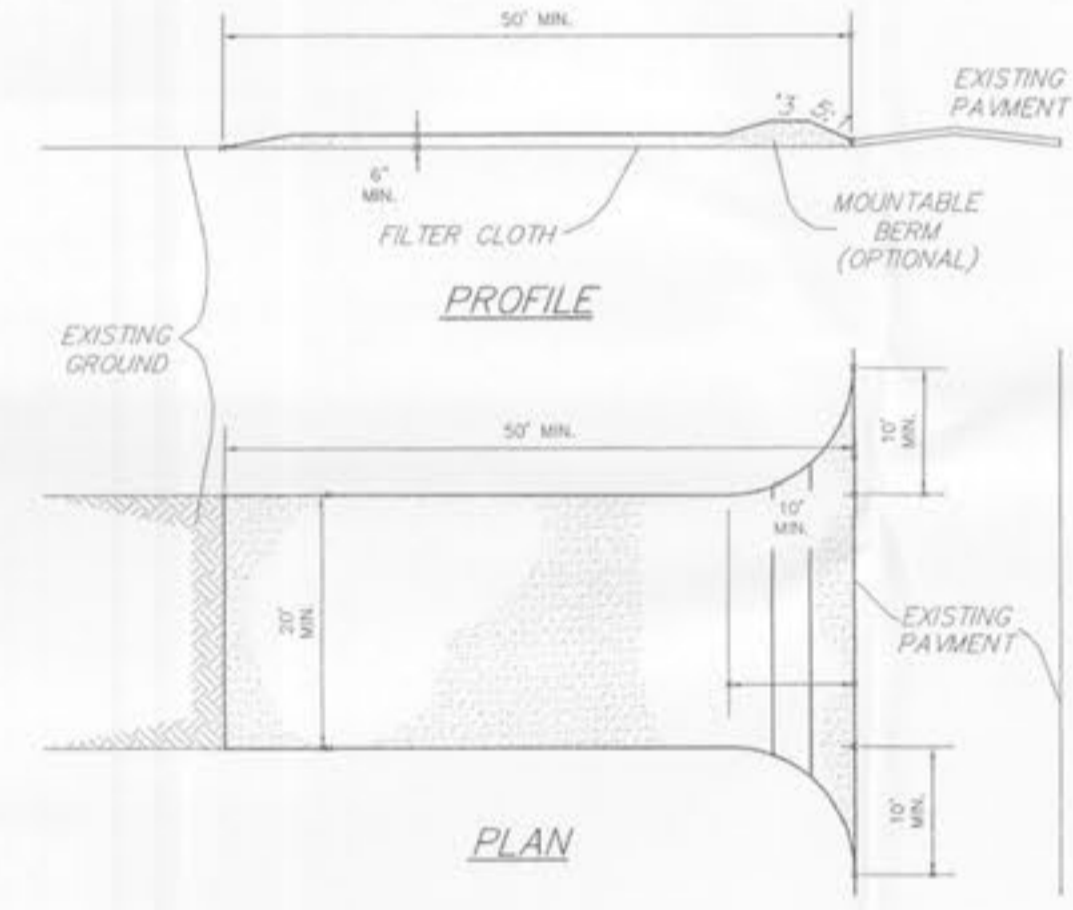
FENCE DETAIL
 NOT TO SCALE



6' HIGH VINYL PRIVACY FENCE
 NOT TO SCALE



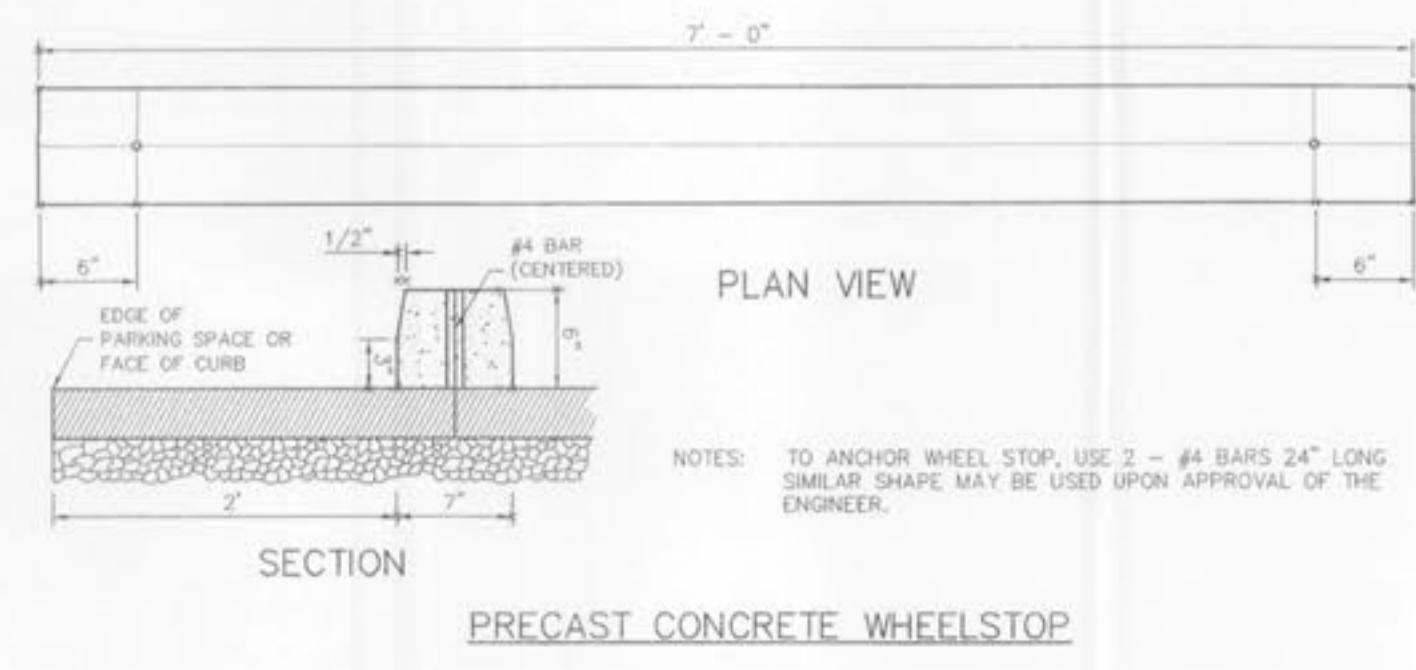
SILTATION FENCE DETAIL
 NOT TO SCALE



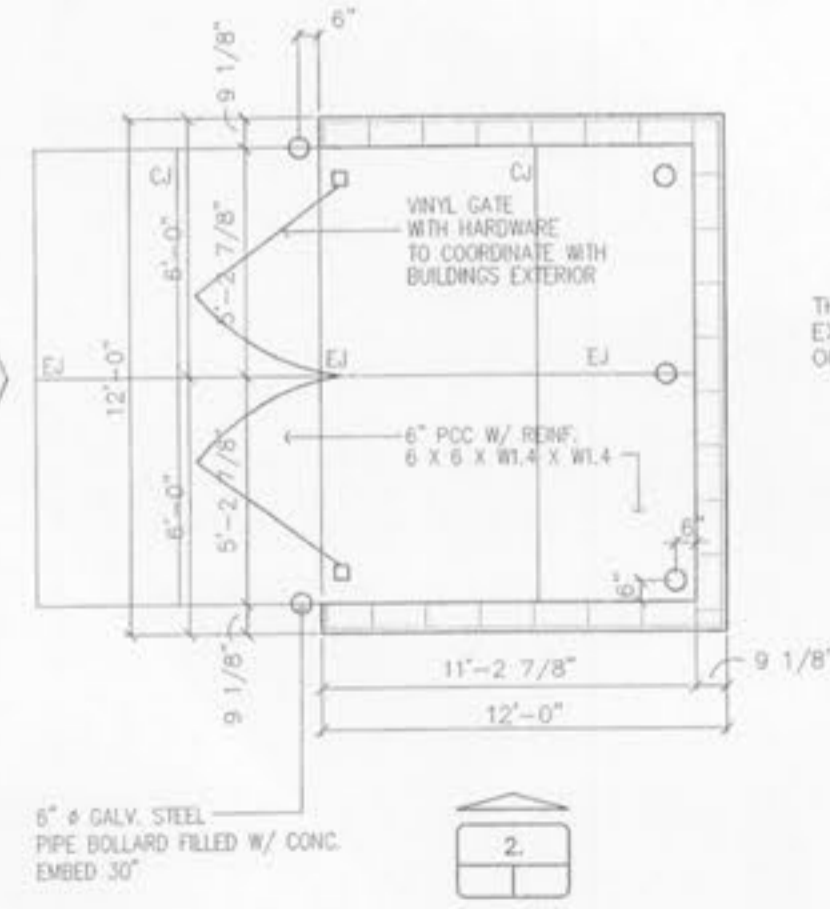
CONSTRUCTION SPECIFICATIONS

- Stone Size - Use 2" stone, or reclaimed or recycled concrete equivalent.
- Length - As required, but not less than 50 feet (except on a single residence lot where a 30 foot minimum length would apply).
- Thickness - Not less than six (6) inches.
- Width - Twenty (20) foot minimum, but not less than the full width at points where ingress or egress occurs.
- Filter Cloth - Will be placed over the entire area prior to placing of stone. Filter will not be required on a single family residence lot.
- Surface Water - All surface water flowing or diverted toward construction entrances shall be piped across the entrance. If piping is impractical, a mountable berm with 5:1 slopes will be permitted.
- Maintenance - The entrance shall be maintained in a condition which will prevent tracking or flowing of sediment onto public rights-of-way. This may require periodic top dressing with additional stone as conditions demand and repair and/or cleanout of any measures used to trap sediment. All sediment spilled, dropped, washed or tracked onto public rights-of-way must be removed immediately.
- Washing - Wheels shall be cleaned prior to entrance onto public rights-of-way. When washing is required, it shall be done on an area stabilized with stone and which drains into an approved sediment trapping device.
- Periodic inspection and needed maintenance shall be provided after each rain.

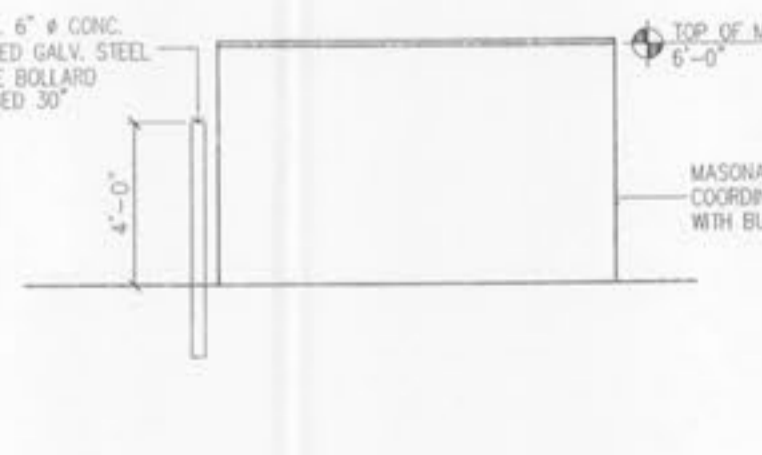
STABILIZED CONSTRUCTION ENTRANCE/WASHDOWN AREA
 NOT TO SCALE



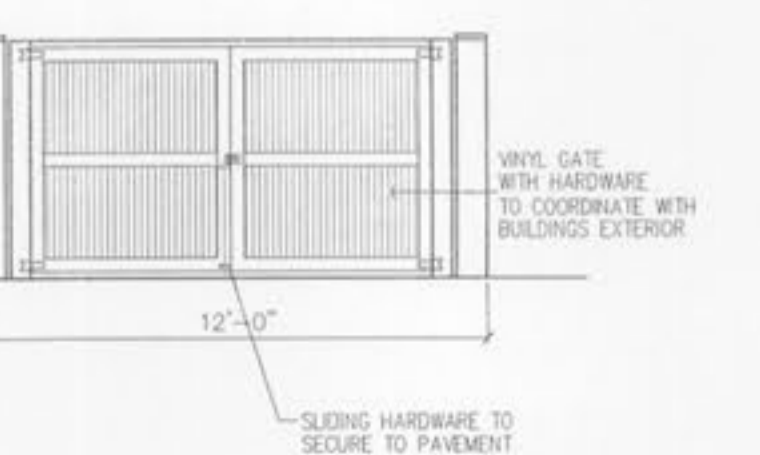
PRECAST CONCRETE WHEELSTOP



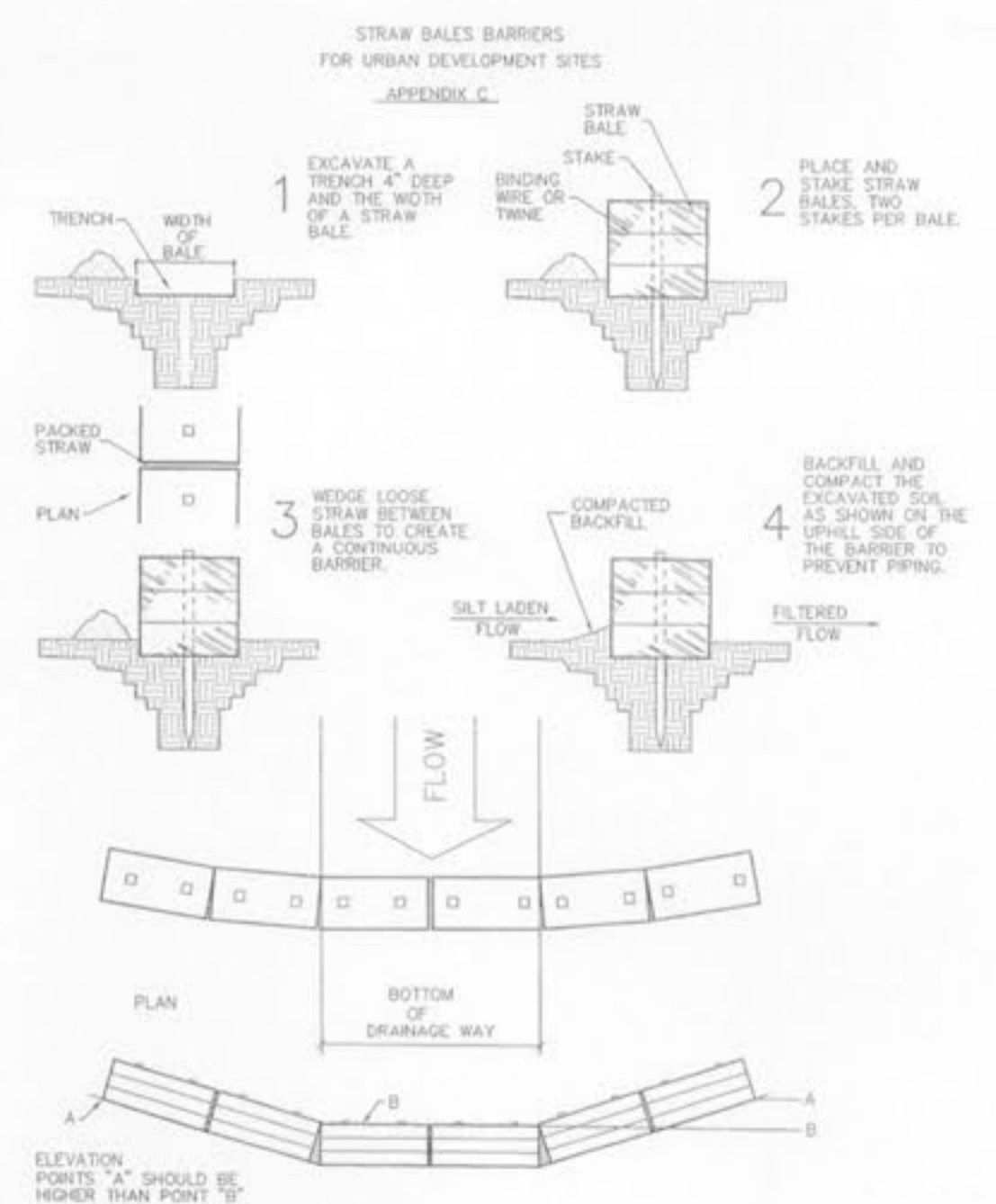
1. TRASH ENCLOSURE PLAN
 NOT TO SCALE



2. ELEVATION
 NOT TO SCALE



3. ELEVATION
 NOT TO SCALE



PLACEMENT AND CONSTRUCTION OF STRAW BALE BARRIER

UNDERGROUND UTILITIES HAVE BEEN PLOTTED FROM AVAILABLE INFORMATION AND THEREFORE THEIR LOCATIONS SHALL BE CONSIDERED APPROXIMATE ONLY. THE VERIFICATION OF THE LOCATION OF ALL UNDERGROUND UTILITIES, EITHER SHOWN OR NOT SHOWN ON THESE PLANS, SHALL BE THE RESPONSIBILITY OF THE CONTRACTOR AND SHALL BE LOCATED PRIOR TO ANY GRADING OR CONSTRUCTION OF THE IMPROVEMENTS.