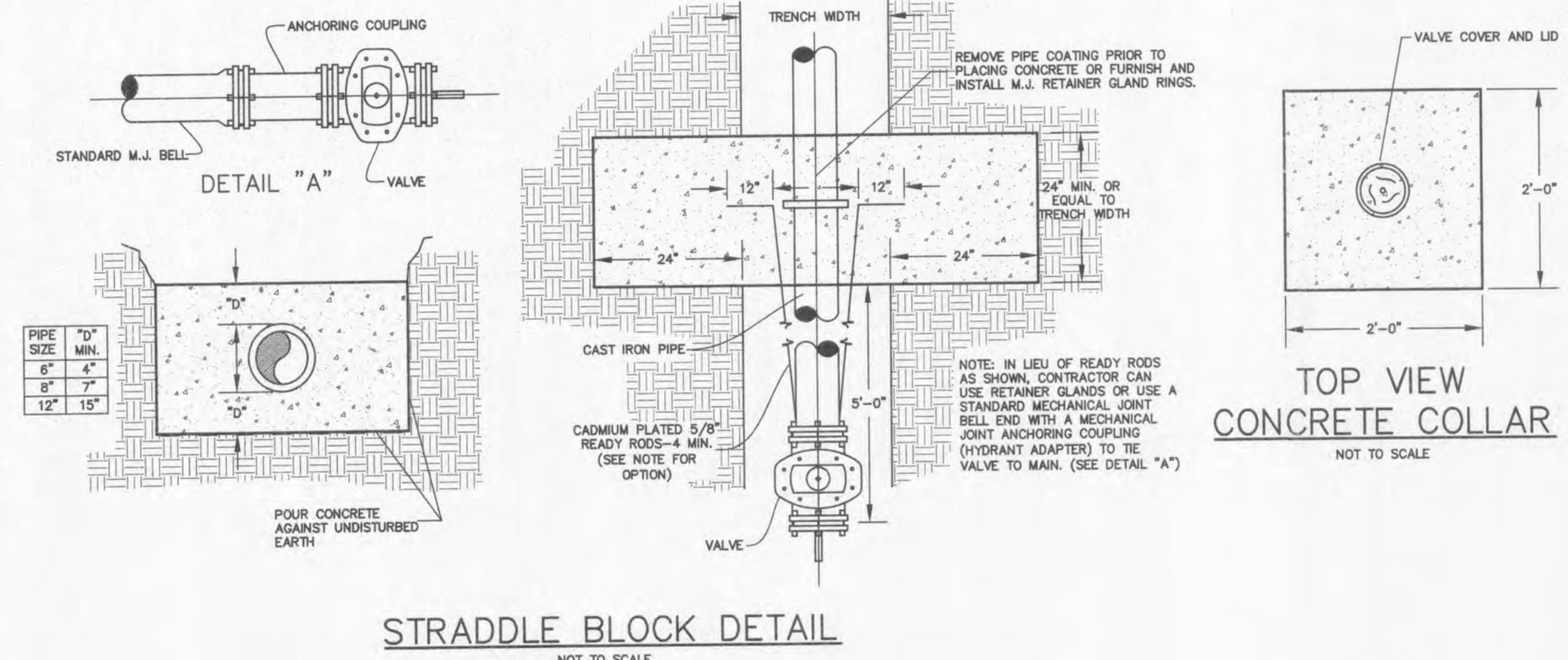
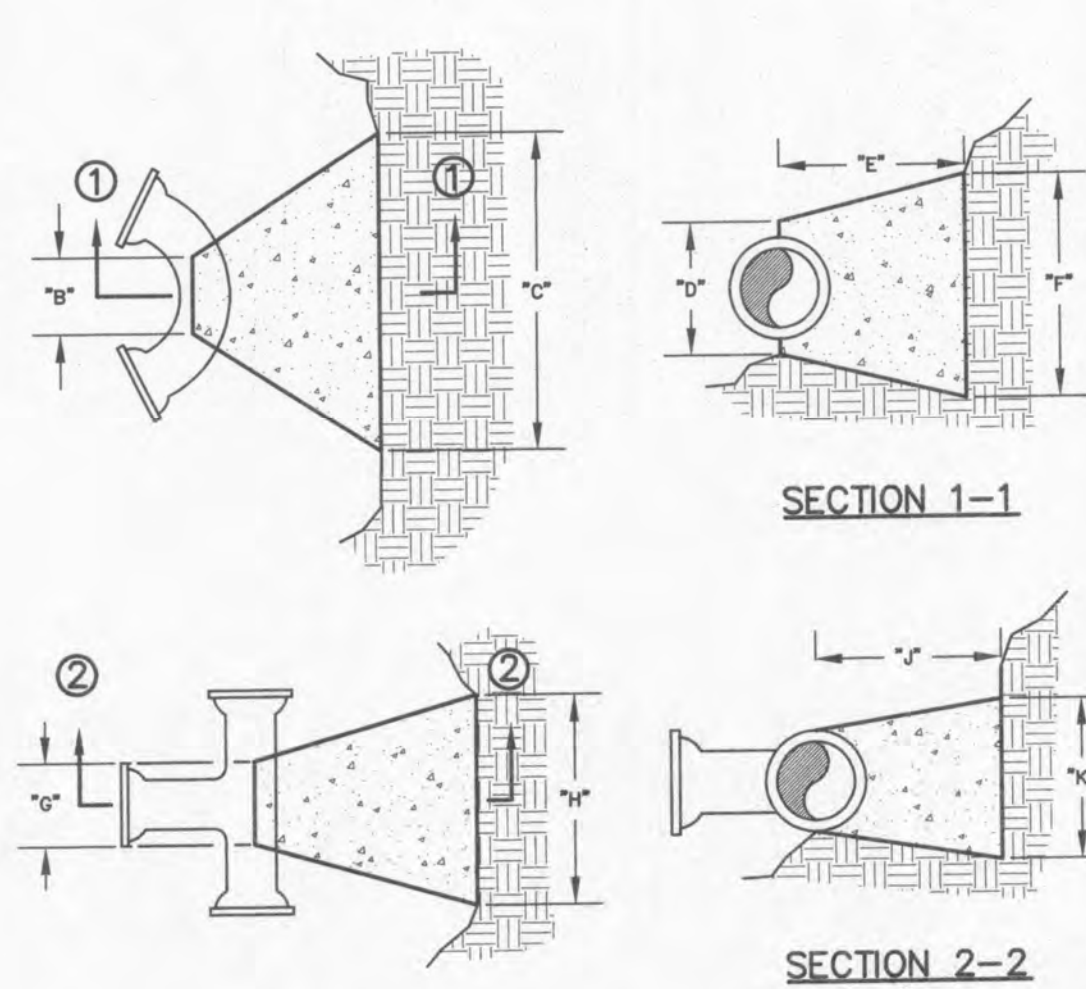


**A SET OF WATERLINE MODIFICATION PLANS FOR  
COOL SPRINGS CENTER  
A TRACT OF LAND IN FRACTIONAL SECTION 21,  
TOWNSHIP 47 NORTH, RANGE 3 EAST OF THE FIFTH PRINCIPAL MERIDIAN  
ST. CHARLES COUNTY, MISSOURI**

09-04-07 PER CITY COMMENTS  
01-02-08 WATERLINE ADJUSTMENTS  
02-21-08 PER CLIENT COMMENTS

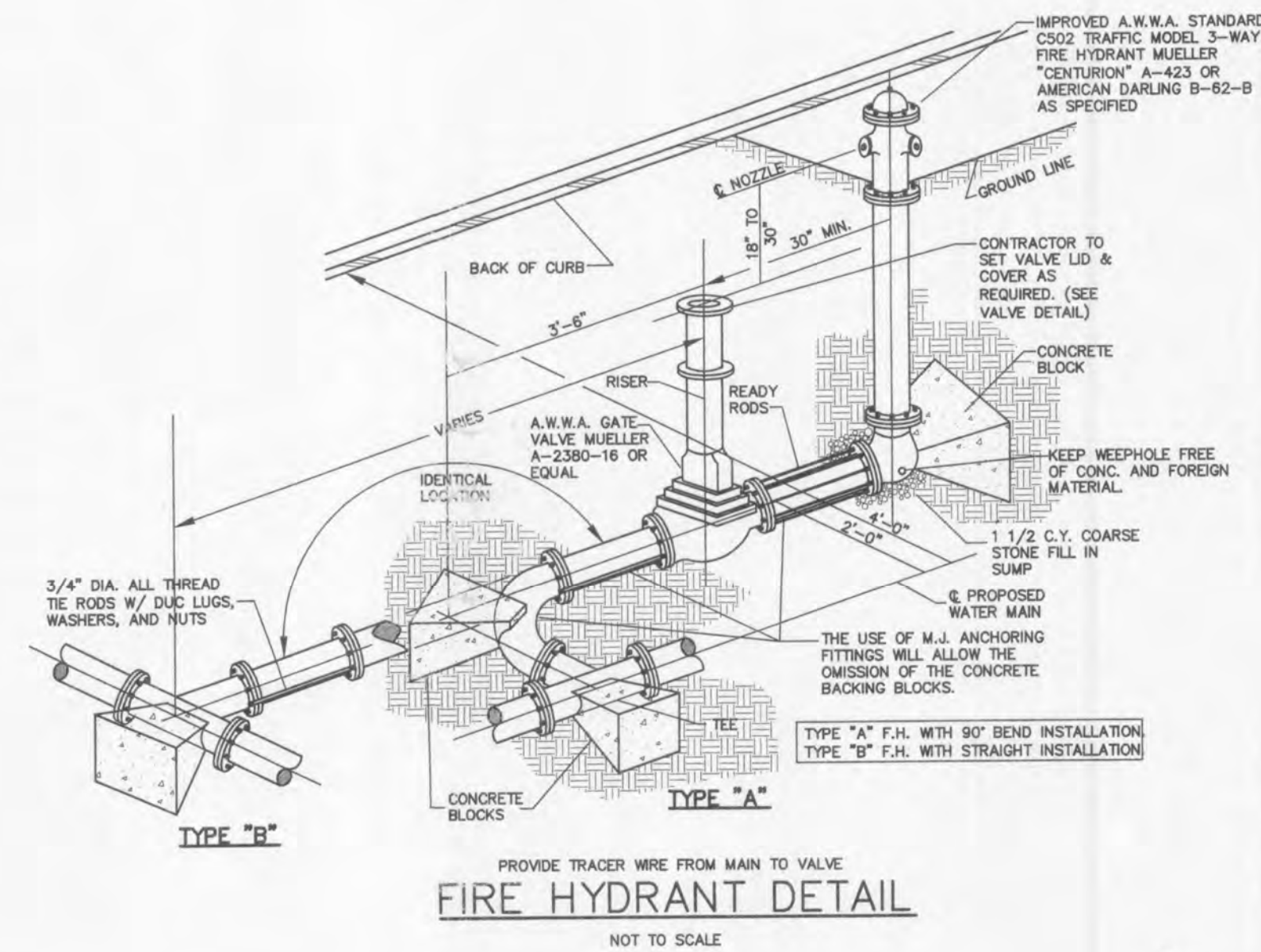
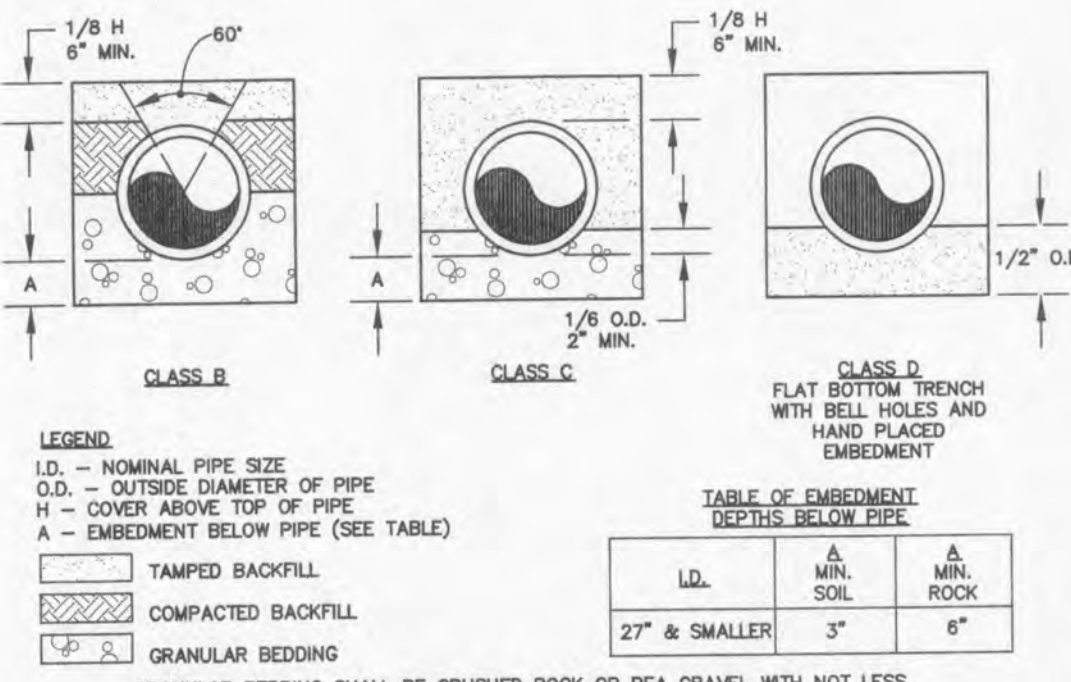
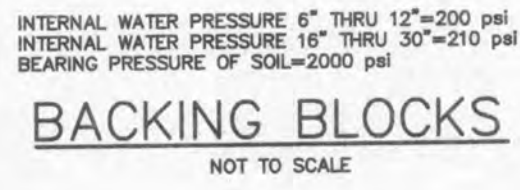
A REVISED WATERLINE PLAN FOR  
**WAREHOUSE/OFFICE  
COOL SPRINGS CENTER**

PROPOSED LOT 2  
COOL SPRINGS CENTER  
1.45 Ac.  
975 COOL SPRINGS INDUSTRIAL

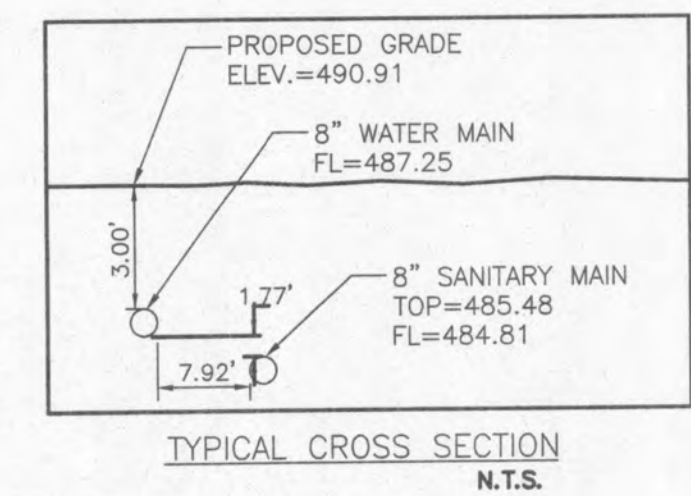


| BENDS       | "B" | "C"  | "D" | "E" |
|-------------|-----|------|-----|-----|
| 8"-11 1/4"  | 8"  | 15"  | 12" | 24" |
| 8"-22 1/2"  | 8"  | 19"  | 12" | 24" |
| 8"-45"      | 8"  | 30"  | 12" | 24" |
| 8"-90"      | 8"  | 30"  | 12" | 24" |
| 8"-11 1/4"  | 8"  | 20"  | 12" | 24" |
| 8"-22 1/2"  | 8"  | 22"  | 12" | 24" |
| 8"-45"      | 8"  | 31"  | 12" | 24" |
| 8"-90"      | 8"  | 31"  | 12" | 24" |
| 12"-11 1/4" | 8"  | 30"  | 12" | 24" |
| 12"-22 1/2" | 8"  | 35"  | 12" | 24" |
| 12"-45"     | 8"  | 40"  | 12" | 24" |
| 12"-90"     | 8"  | 40"  | 12" | 24" |
| 16"-11 1/4" | 12" | 28"  | 20" | 24" |
| 16"-22 1/2" | 12" | 39"  | 20" | 24" |
| 16"-45"     | 12" | 51"  | 20" | 24" |
| 16"-90"     | 12" | 51"  | 20" | 24" |
| 20"-11 1/4" | 12" | 34"  | 24" | 28" |
| 20"-22 1/2" | 12" | 46"  | 24" | 28" |
| 20"-45"     | 12" | 74"  | 24" | 28" |
| 20"-90"     | 12" | 74"  | 24" | 28" |
| 24"-11 1/4" | 12" | 40"  | 28" | 30" |
| 24"-22 1/2" | 12" | 56"  | 28" | 30" |
| 24"-45"     | 12" | 101" | 28" | 30" |
| 24"-90"     | 12" | 101" | 28" | 30" |
| 30"-11 1/4" | 12" | 49"  | 34" | 30" |
| 30"-22 1/2" | 12" | 70"  | 34" | 30" |
| 30"-45"     | 12" | 154" | 34" | 30" |
| 30"-90"     | 12" | 154" | 34" | 30" |

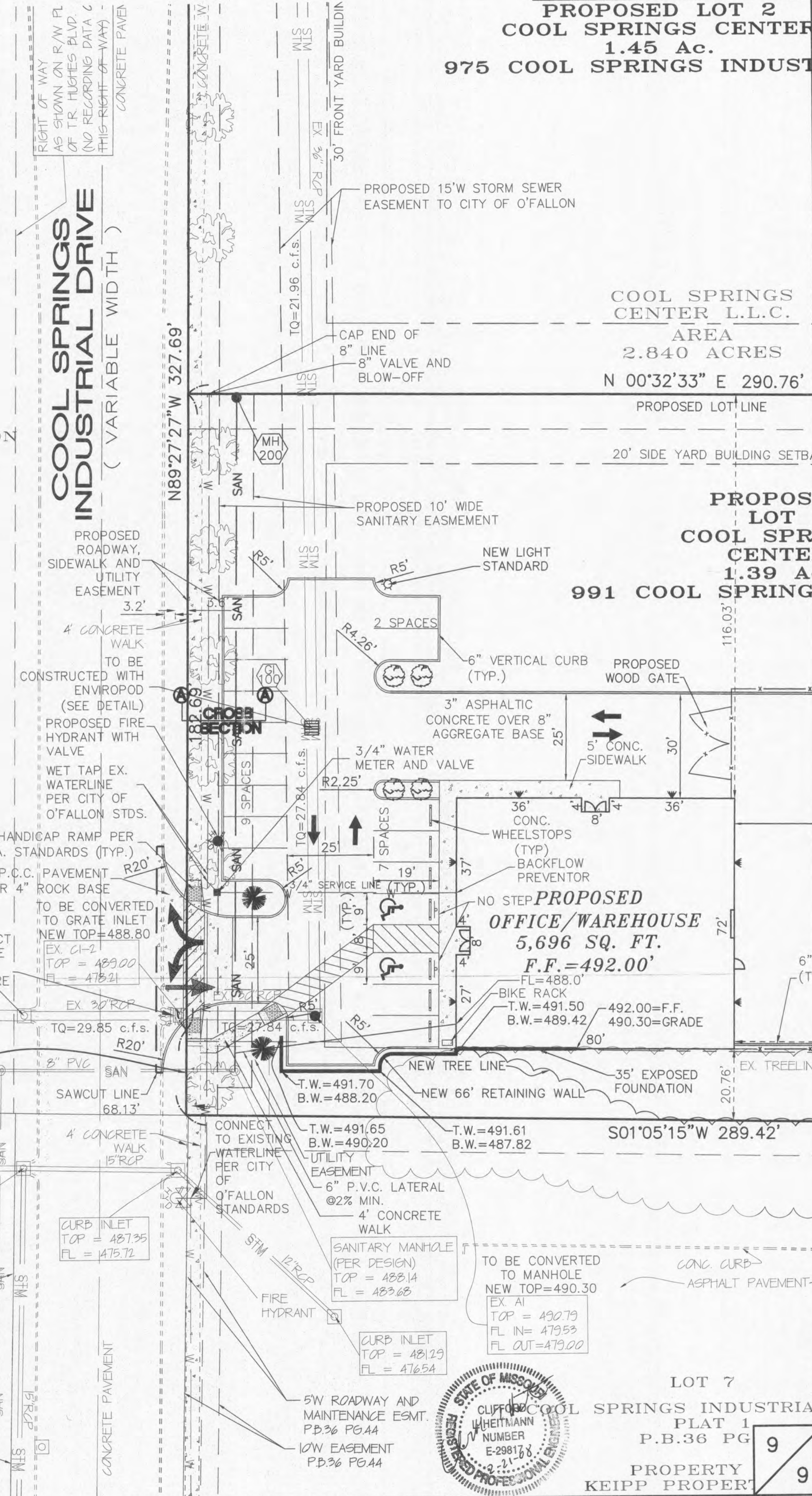
| TEES        | "B" | "C" | "D" | "E" |
|-------------|-----|-----|-----|-----|
| 6"x8"x8"    | 12" | 24" | 24" | 18" |
| 8"x8"x8"    | 12" | 24" | 24" | 18" |
| 8"x8"x8"    | 12" | 27" | 24" | 27" |
| 12"x12"x8"  | 12" | 24" | 24" | 18" |
| 12"x12"x8"  | 12" | 27" | 27" | 27" |
| 12"x12"x12" | 12" | 38" | 24" | 38" |
| 24"x24"x18" | 18" | 53" | 28" | 53" |



NOTE: BACKFILL FOR ALL PIPES UNDER ROADWAYS, DRIVEWAYS, PARKING LOTS OR WITHIN RIGHTS OF WAY SHALL CONSIST OF 1" CLEAN CRUSHED LIMESTONE CAREFULLY PLACED TO AVOID FUTURE SETTLEMENT FROM 6" ABOVE THE TOP OF THE PIPE TO THE PAVEMENT SUBGRADE OR FINISHED GRADE.



SCALE: 1" = 20'



UNDERGROUND UTILITIES HAVE BEEN PLOTTED FROM AVAILABLE INFORMATION AND THEREFORE THEIR LOCATIONS SHALL BE CONSIDERED APPROXIMATE ONLY. THE VERIFICATION OF THE LOCATION OF ALL UNDERGROUND UTILITIES, EITHER SHOWN OR NOT SHOWN ON THESE PLANS SHALL BE THE RESPONSIBILITY OF THE CONTRACTOR, AND SHALL BE LOCATED PRIOR TO ANY GRADING OR CONSTRUCTION OF THE IMPROVEMENTS.



LOT 7  
CLIFF C. KEIPP INDUSTRIAL  
PLAT 1  
P.B.36 PG 9  
PROPERTY  
KEIPP PROPERTY