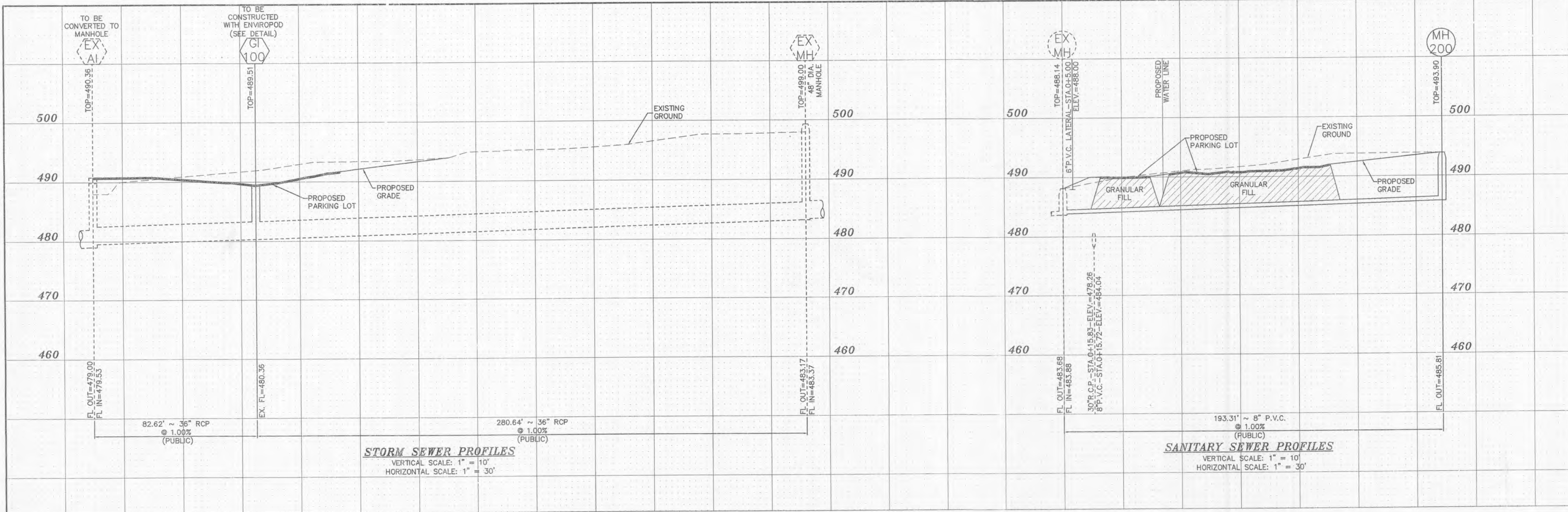


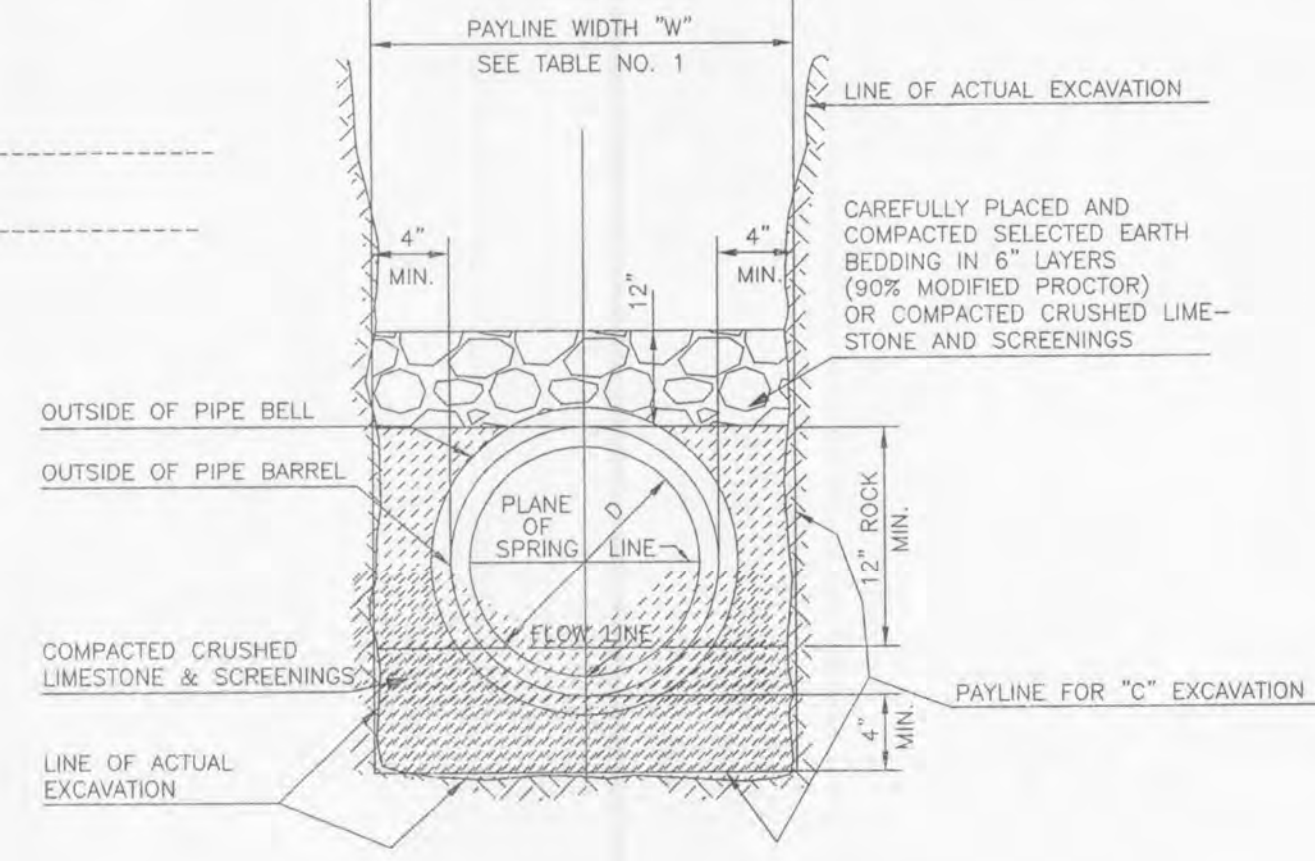
NOTE TO CONTRACTOR:
CONSULT YOUR LOCAL CONTECH REPRESENTATIVE
FOR INSTALLATION AND SPECIFICATIONS FOR THE
ENVIROPOD®
JOSH DICKINSON, P.E. @ (314) 645-1025



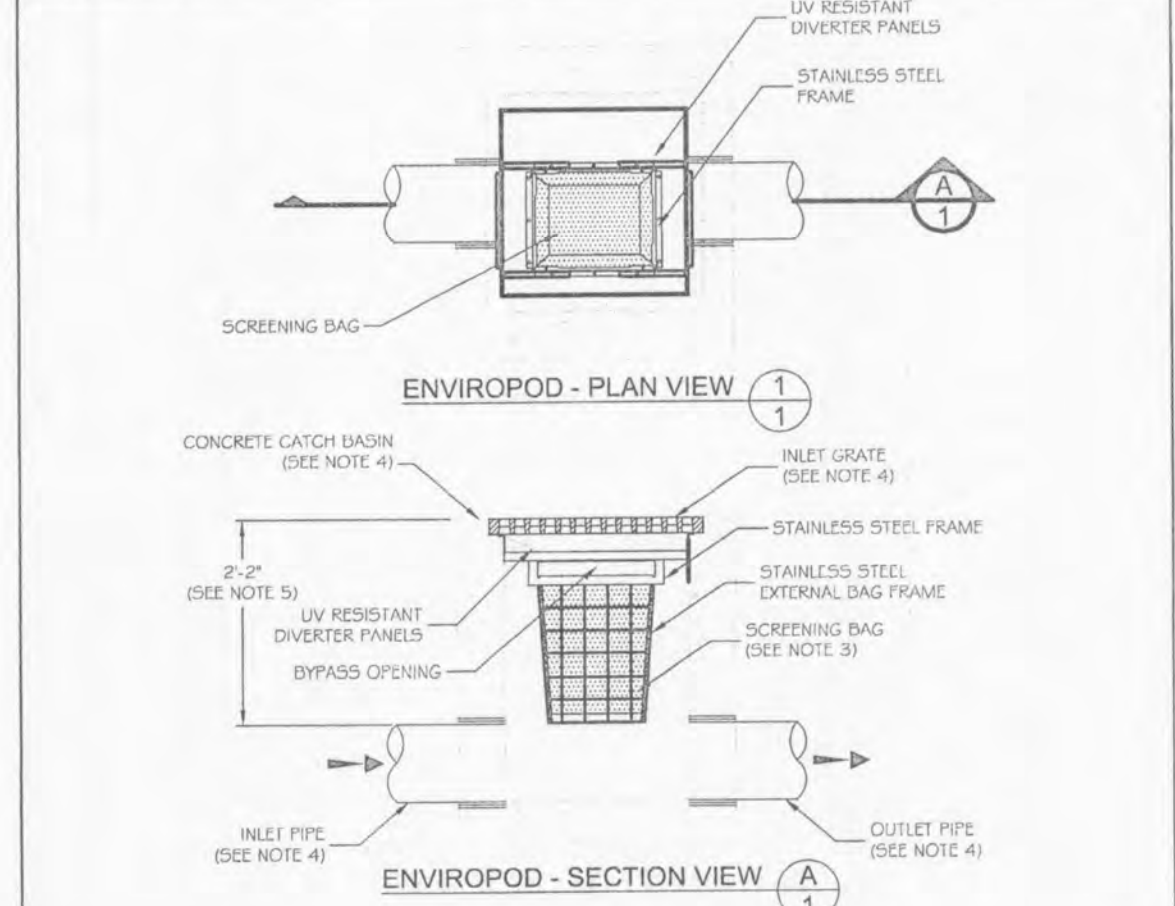
BAX PROJECT NAME : COOL SPRINGS CENTER
BAX PROJECT NO. : 04-13117A1
DESIGN DATE : 7-17-07
DESIGNED BY : CAL
SUBMITTED: FILENAME: 13117a1

UPP STR	LOW STR	L	DIA	UPPER EL. LN	LOWER EL. LN	PS	UPPER ST. EL.	DEPTH BY GR.	UPPER HY. EL.	LOWER HY. EL.	HYDR. GRADE	HEAD	VEL.	VEL. HEAD	JUNC. LOSS	TURN. LOSS	Q	TQ	PIPE CAP.	REMARKS
EXMH2	G1100	281	36	483.17	480.36	1.00	499.00	14.66	484.34*	483.36	.00110	0.30	3.11	0.15	0.15	0.00	0.00	21.96	66.74	1
G1100	CONVMH	83	36	480.36	479.53	1.00	489.51	6.66	482.85	482.53	.00200	0.16	4.18	0.27	0.16	0.00	7.59	29.55	66.85	2
CONVMH	EXC12	39	30	479.79	478.21	4.05	480.79	9.59	481.20	480.71	.00520	0.20	6.02	0.56	0.29	0.00	0.00	29.55	82.56	3
EXC12	EXC11	45	30	478.21	476.92	2.87	489.00	8.47	480.53	479.42	.00570	0.26	6.31	0.62	0.46	0.39	1.41	30.96	69.45	4
EXC11	EXPE	51	36	475.88	475.37	1.00	488.94	10.46	478.48	478.37	.00210	0.11	4.30	0.29	0.00	0.00	1.16	32.12	66.70	5

SANITARY SEWER PROFILES
VERTICAL SCALE: 1" = 10'
HORIZONTAL SCALE: 1" = 30'



- GENERAL NOTES**
- ENVIROPOD® BY CONTECH STORMWATER SOLUTIONS, PORTLAND, OR (800) 548-4667, SCARBOROUGH, ME (877) 907-8676; ELKIDGE, MO (866) 740-3318.
 - CATCH BASIN INSERT TO BE ENVIROPOD OR APPROVED EQUAL. SUBMITTALS REQUIRED.
 - STANDARD MESH SIZE FOR SCREENING BAG RETAINS PARTICLES GREATER THAN 1,000 MICRONS. CONTACT CONTECH STORMWATER SOLUTIONS FOR ALTERNATE MESH SIZES. REPLACEABLE OR ADJUSTABLE FOUCHES INCLUDED.
 - CONCRETE CATCH BASIN, GRATE AND INLET AND OUTLET PIPING TO BE SPECIFIED BY ENGINEER AND PROVIDED BY CONTRACTOR.
 - STANDARD ENVIROPOD REQUIRES 2" DROP FROM INLET TO INVERT OUT. IF INLET PIPING IS SPECIFIED, ENVIROPOD REQUIRES 2" DROP FROM INLET TO CENTER OF INLET PIPE. CONTACT CONTECH STORMWATER SOLUTIONS FOR SHALLOWER APPLICATIONS.
 - ALL ENVIROPODS REQUIRE REGULAR MAINTENANCE. REFER TO OPERATION AND MAINTENANCE GUIDELINES FOR MORE INFORMATION.

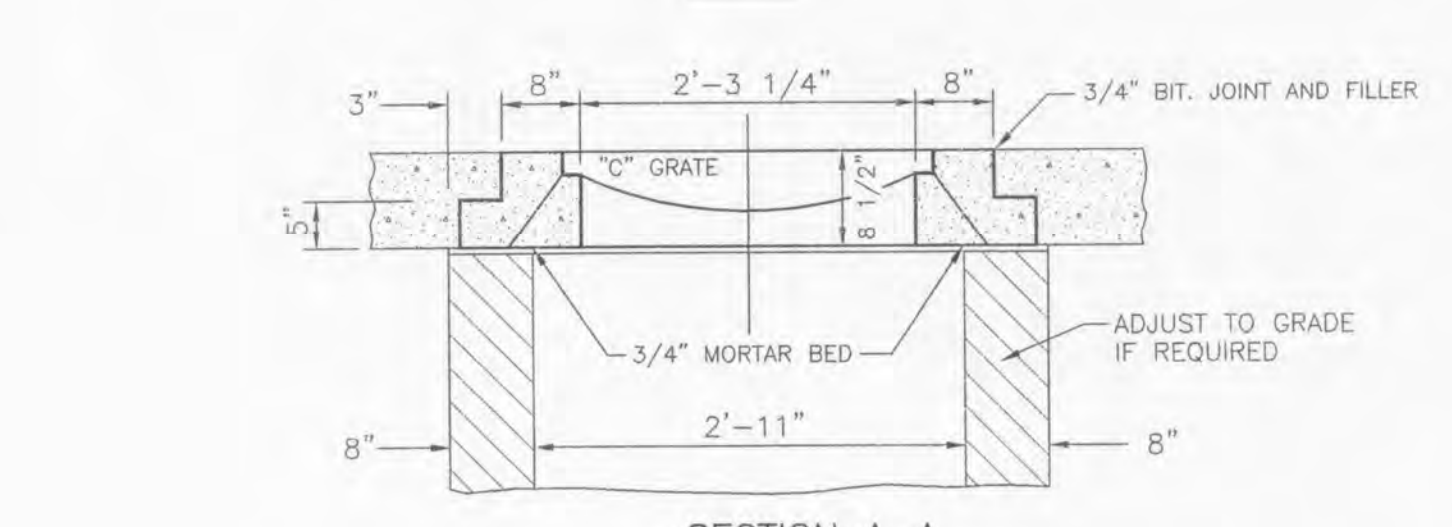
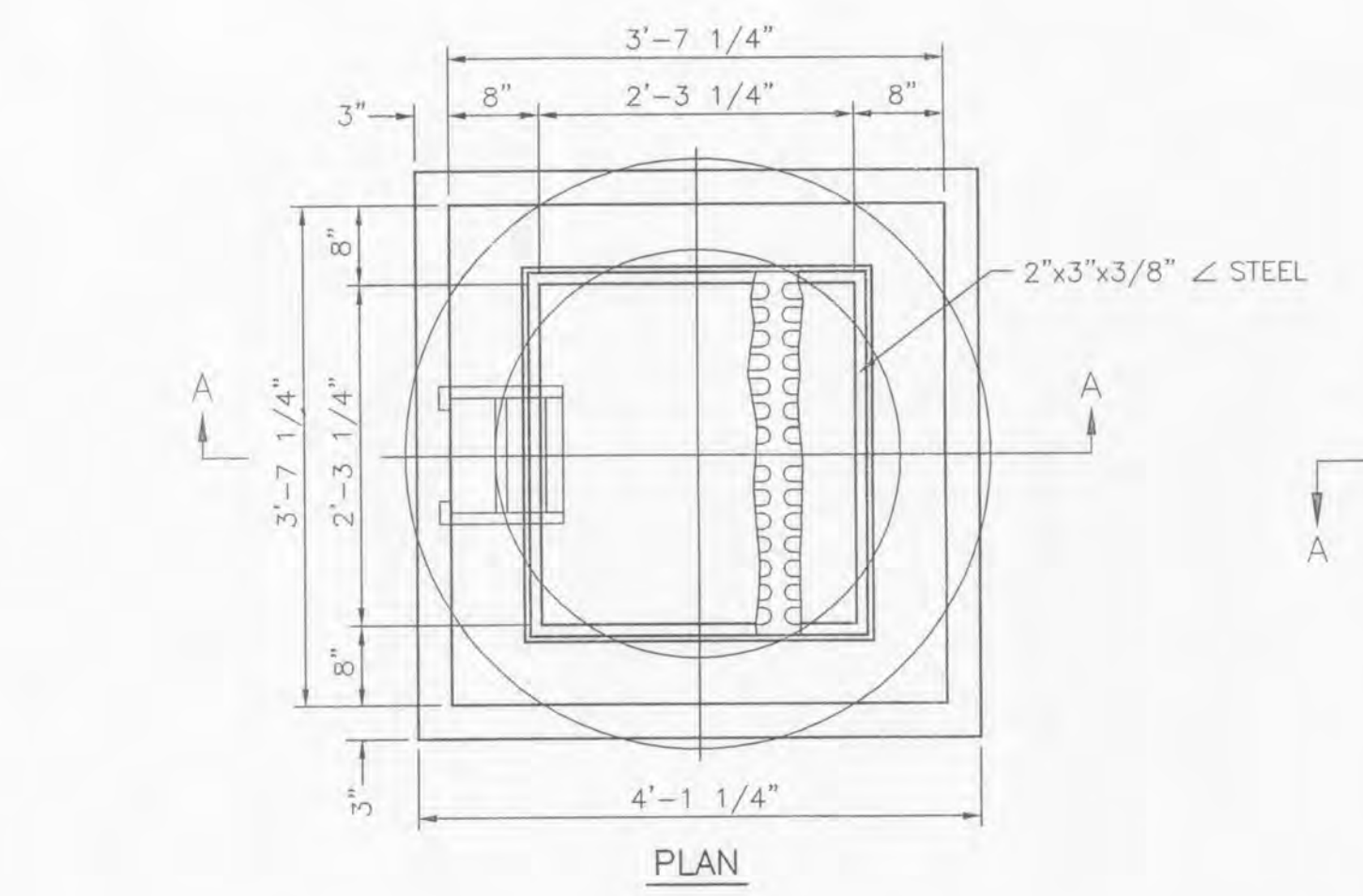
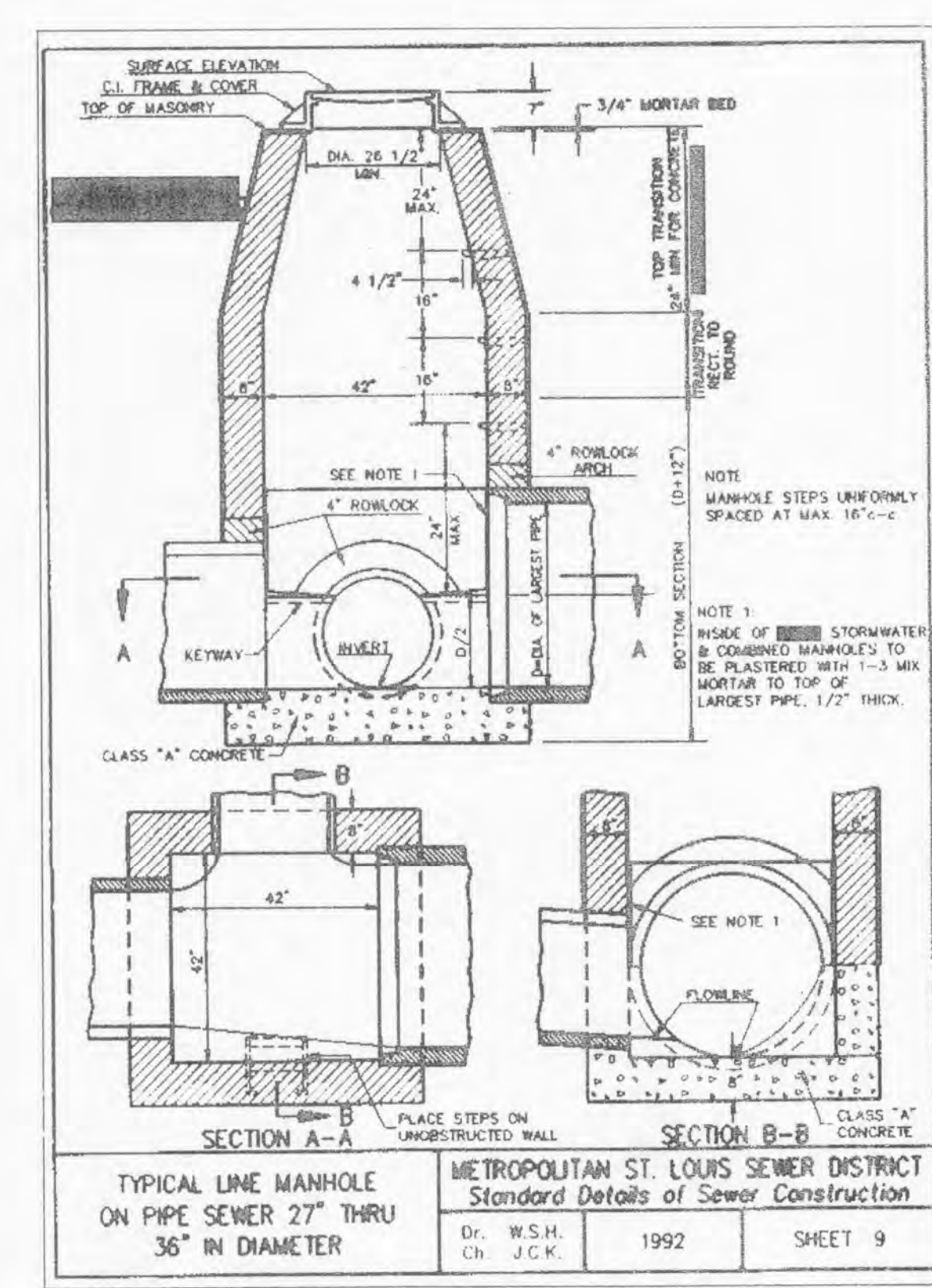


STANDARD MODEL SIZES

MODEL	CATCH BASIN SIZES	DESIGN CAPACITY	WATER QUALITY FLOW RATE	FIXAL BYPASS FLOW RATE
EPD01E10	18" x 18" TO 24" x 24"	4.0 CFS	4.0 CFS	4.0 CFS
EPD02E12	24" x 24" TO 30" x 30"	3.0 CFS	3.0 CFS	3.0 CFS
EPD03E15	30" x 30" TO 36" x 36"	4.0 CFS	4.0 CFS	4.0 CFS
EPD03E15	36" x 36" TO 48" x 48"	5.0 CFS	5.0 CFS	5.0 CFS

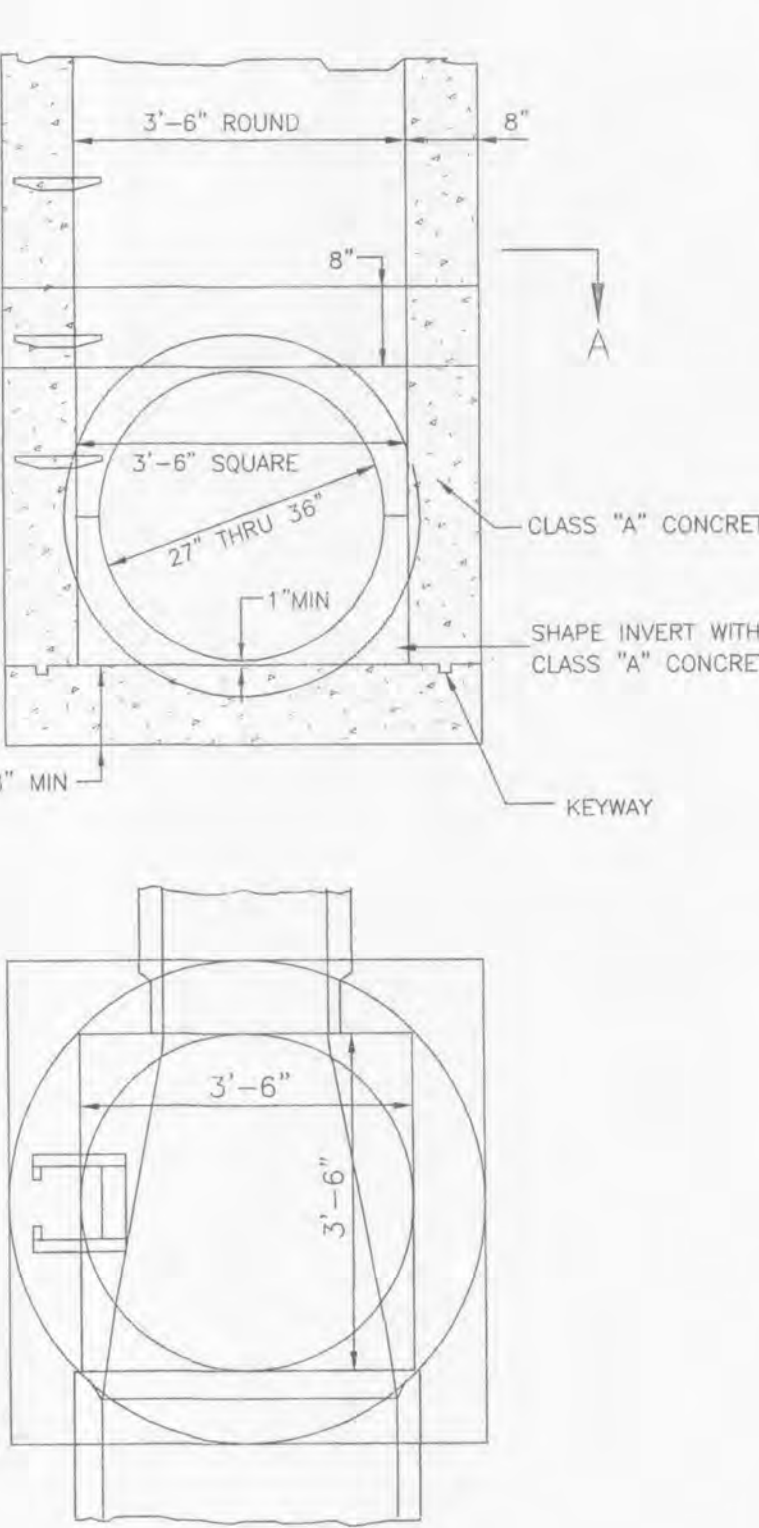
U.S. Patent # 5,395,974

ENVIROPOD CATCH BASIN INSERT - DROP IN UNIT
PLAN AND SECTION DETAILS
DATE: 06/04/07 SCALE: NONE FILE NAME: EP-2-02L DRAWN: JAW CHECKED: JAW



NOTE: INLETS ON THIS SHEET ARE TO BE USED IN LOCATIONS WHERE STANDARD OPEN THROAT INLETS CAN NOT BE USED, IN PAVED TRAFFIC WAY, AND IN LIMITED EASEMENTS.

2 GRATE INLET



MANHOLE ON PIPE SEWER 27" THRU 36" (ALTERNATE)

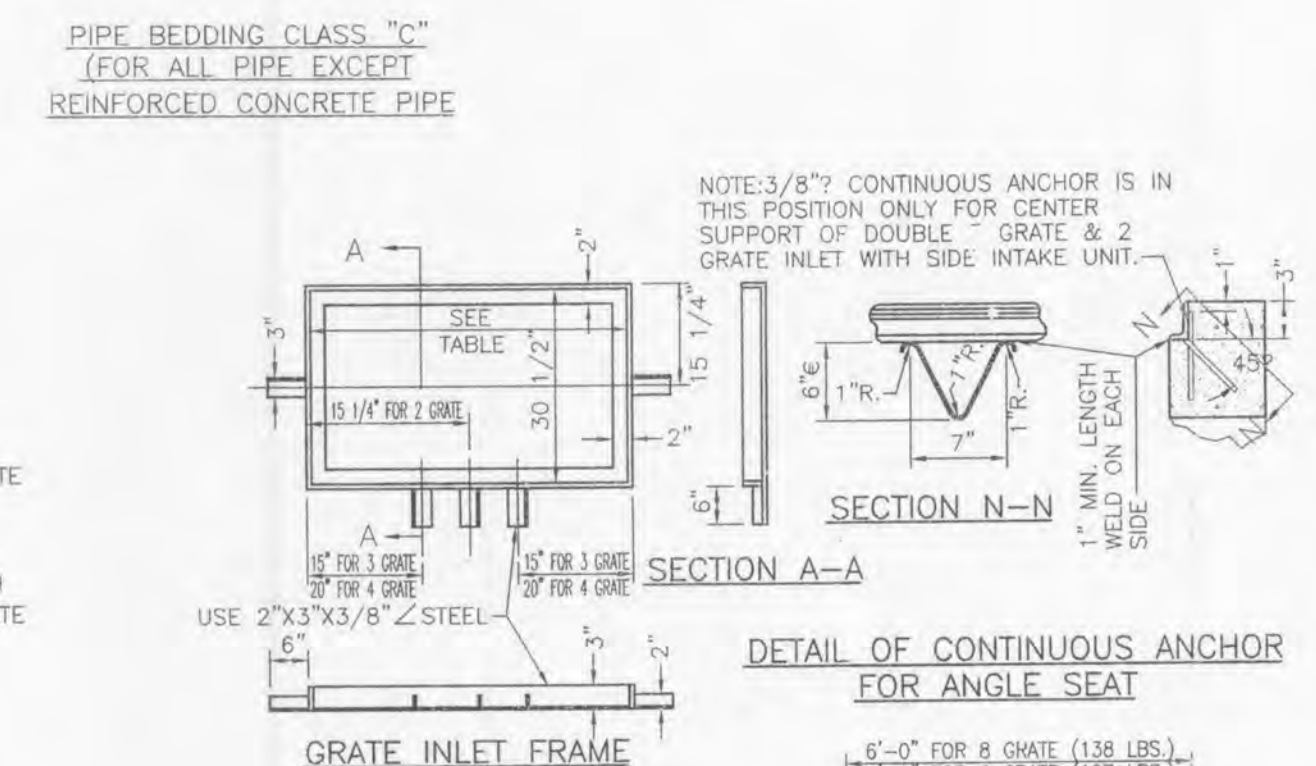
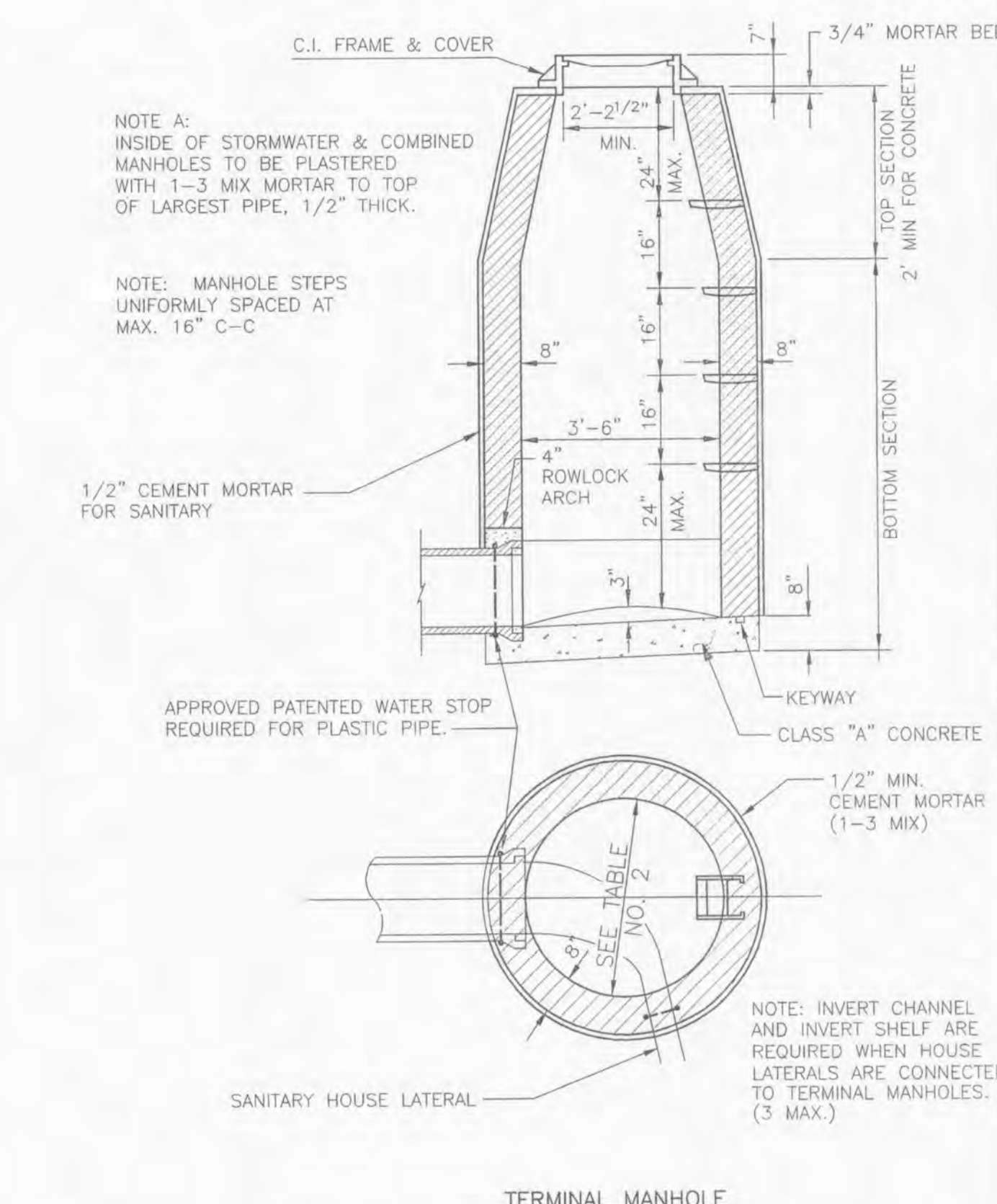


TABLE FOR SIZE OF FRAMES

2 GRATE	= 30 1/2" x 30 1/2"
3 GRATE	= 30 1/2" x 45 1/2"
4 GRATE	= 30 1/2" x 60 1/2"

DETAILS OF INLET FRAME AND GRATES



UNDERGROUND UTILITIES HAVE BEEN PLOTTED FROM AVAILABLE INFORMATION AND THEREFORE THEIR LOCATIONS SHALL BE CONSIDERED APPROXIMATE ONLY. THE VERIFICATION OF THE LOCATION OF ALL UNDERGROUND UTILITIES, EITHER SHOWN OR NOT SHOWN ON THESE PLANS SHALL BE THE RESPONSIBILITY OF THE CONTRACTOR, AND SHALL BE LOCATED PRIOR TO ANY GRADING OR CONSTRUCTION OF THE IMPROVEMENTS.