



COOL SPRINGS CONNECTOR ROAD

CITY OF O'FALLON
COMMUNITY DEVELOPMENT
100 N. MAIN ST.
O'FALLON, MO 63366
(636) 240-2000

PROJECT NO. 01-064

ABBREVIATIONS

AI	AREA INLET	MO	MIDDLE ORDINATE
ASPH	ASPHALT	NO	NUMBER
ATG	ADJUST TO GRADE	NTS	NOT TO SCALE
ATGBO	ADJUST TO GRADE BY OTHERS	OF	OUTFALL
B	BASELINE	PC	PULL BOX
BC	BACK OF CURB	PCC	POINT OF CURVATURE
BEG	BEGINNING	PDE	PORTLAND CEMENT CONCRETE
BLD	BUILD	PE	PERMANENT DRAINAGE EASEMENT
BM	BENCHMARK	PI	PRIVATE ENTRANCE
BPE	BIKE PATH EASEMENT	PP	POINT OF INTERSECTION
C or CL	CENTERLINE	PROP	POWER POLE
CE	COMMERCIAL ENTRANCE	PS	PROPOSED
CHIS	CHISELED	PT	PRIVATE SIGN
CI	CURB INLET	PVT	POINT OF TANGENT
CL	CONSTRUCTION LIMIT	PVC	POINT OF VERTICAL CURVATURE
CLF	CHAIN LINK FENCE	PVI	OR POLYVINYL CHLORIDE
CMP	CORRUGATED METAL PIPE	PVMT	POINT OF VERTICAL INTERSECTION
CONC	CONCRETE	PVT	PAVEMENT
CONST	CONSTRUCTION/CONSTRUCT	R	POINT OF VERTICAL TANGENT
COR	CORNER	R/W	RADIUS
CSB	CABLE SPLICE BOX	RCP	RIGHT-OF-WAY
CT	COURT	RD	REINFORCED CONCRETE PIPE
DCI	DOUBLE CURB INLET	REQ'D	ROAD
DR	DRIVE	RET	REQUIRED
EL	ELEVATION	RT	RETAINING
DP	EDGE OF PAVEMENT	SDWK	RIGHT
ELEV	ELEVATION	SGI	SIDEWALK
EX	EXISTING	SHLDR	SPECIAL GRATE INLET
EXIST	EXISTING	SS	SHOULDER
FC	FACE OF CURB	SSD	STREET SIGN
FES	FLARED END SECTION	STA	STOPPING SIGHT DISTANCE
FL	FLOWLINE	SURF	STATION
GD	GAS DRIP	TBA	SURFACE
GDP	GUARD POST	TBA	TO BE ABANDONED
GI	GRATE INLET	TBADJ	TO BE ADJUSTED
GM	GAS METER	TBM	TEMPORARY BENCHMARK
GT	GRATED TROUGH	TBR	TO BE REMOVED
GV	GAS VALVE	TBR&R	TO BE REMOVED AND REPLACED
GWA	GUY WIRE ANCHOR	TBR&RBO	TO BE REMOVED AND REPLACED BY OTHERS
GWS/OWS	GAS/OIL WARNING SIGN	TCE	TEMPORARY CONSTRUCTION EASEMENT
HOR	HORIZONTAL	TEMP	TEMPORARY
INV	INVERT	TSB	TEMPORARY SPLICE BOX
IP	IRON PIN	TL	TELEPHONE LINE
K	RATE OF VERTICAL CURVE	TYP	TRAFFIC LIGHT
LN	LANE	UIP	TYPICAL
LS	LIGHT STANDARD	VC	USE IN PLACE
LT	LEFT	VCL	VERTICAL CURVE
m	METER	WM	VITRIFIED CLAY PIPE
MB	MAIL BOX	WV	WATER METER
MH	MANHOLE		WATER VALVE
MISC	MISCELLANEOUS		

UTILITY COMPANIES

WATER -
ALLIANCE
410 EAST ELM STREET
O'FALLON, MO 63366
(636) 272-6818

SANITARY SEWER DISTRICT -
ALLIANCE
410 EAST ELM STREET
O'FALLON, MO 63366
(636) 272-6818

ELECTRIC -
AMEREN UE
200 NORTH CALLAHAN RD.
WENTZVILLE, MO 63385
(636) 639-8250

GAS -
LACLEDE GAS
3950 FOREST PARK AVE.
ST. LOUIS, MO 63108
(314) 621-6960

TELEPHONE -
VERIZON
680 PARR RD. BUILDING AA
WENTZVILLE, MO 63385
(636) 332-7306

CABLE -
CHARTER COMMUNICATIONS
4282 SHORELINE DRIVE
EARTH CITY, MO 63045
(314) 738-0091

SCHOOL DISTRICT -
FORT ZUMWALT SCHOOL DISTRICT
110 VIRGIL
O'FALLON, MO 63366
(636) 272-6620

FIRE DEPARTMENT -
O'FALLON FIRE DEPARTMENT
119 EAST ELM ST.
O'FALLON, MO 63366
(636) 272-3493

LEGEND

	TREE
	EX TELEPHONE PEDESTAL
	EX WATER VALVE
	EX FIRE HYDRANT
	EX POWER POLE
	CONSTRUCTION LIMITS
	EASEMENT
	EX PROPERTY LINE
	FLOW LINE
	OVERHEAD LINE
	TELEPHONE LINE
	WATER LINE W/ SIZE
	GAS LINE

HORIZONTAL & VERTICAL CONTROL

B300 - PK NAIL IN ASPHALT SHOULDER OF WEST SIDE OF NEW COOL SPRINGS ROAD AT HEARTLAND EXPRESS ENTRANCE 2.7' FROM EDGE OF CONCRETE PAVEMENT.
ELEVATION= 487.95

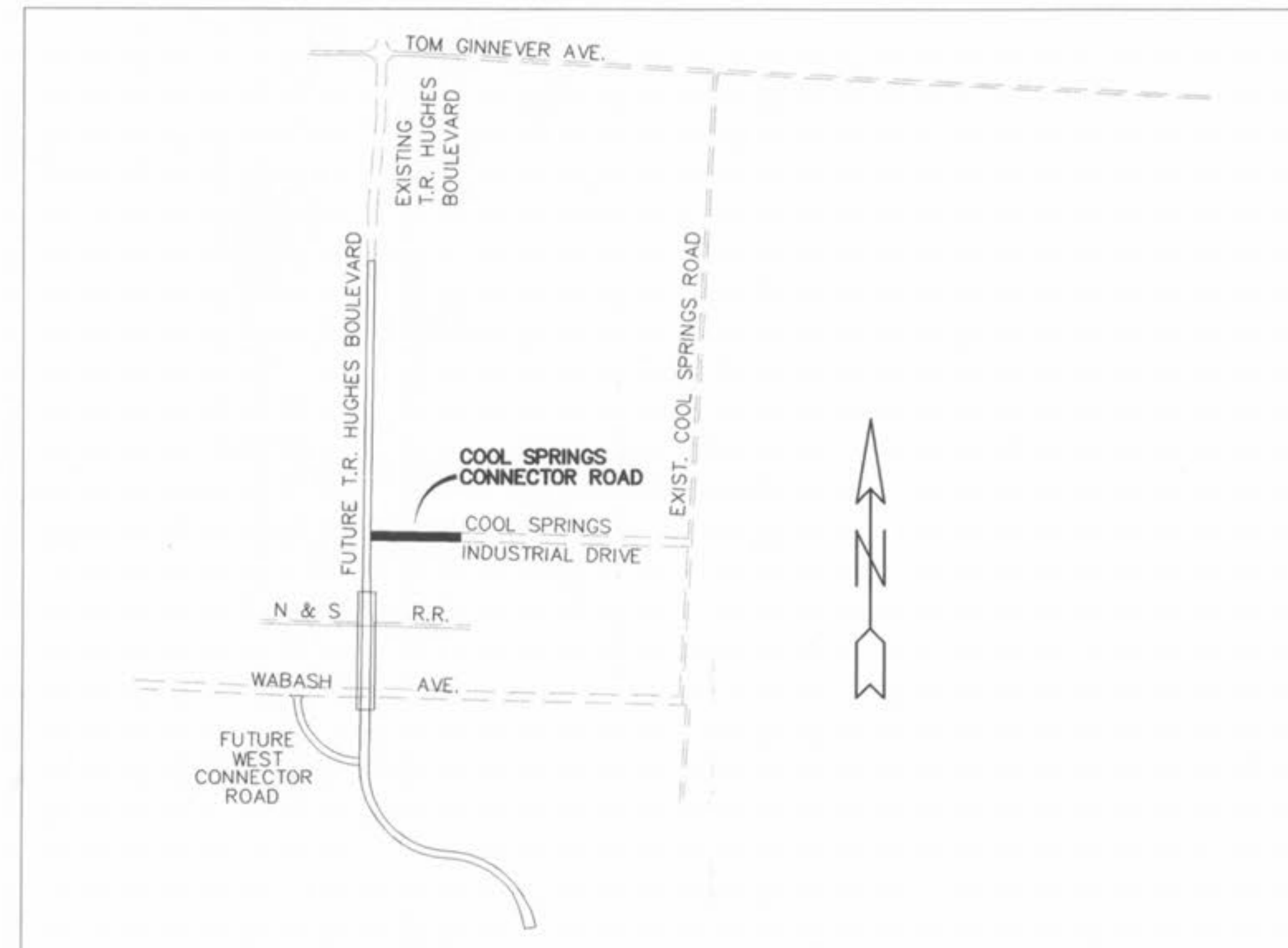
BMS - FOUND EXISTING CHISELED "+" IN TOP NORTH SIDE OF 7' DIAMETER CONCRETE WATER VAULT IN FRONT OF BUILDING #1012 VSM ABRASIVES CORP. WABASH ST.
ELEVATION= 514.20

CONTROL POINTS 6 & 10 PER THE COOL SPRINGS ROAD/I-70 INTERCHANGE PLANS PREPARED BY BURNS & MCDONNELL.

POINT 6 - 80D WITH CROSS ON NORTH ASPHALT SHOULDER OF EAST TERRA LANE AT GOLDEN TRIANGLE CONCRETE COMPANY.
NORTHING= 1081421.885 EASTING= 771275.0315

POINT 10 - SET NAIL AT CENTERLINE OF DIAGONALS OF GRATE INLET AT ENTRANCE TO 84 LUMBER COMPANY.
NORTHING= 1081450.428 EASTING= 768816.4406

B301 - CHISELED "+" IN TOP OF RR SPIKE 1.7' FROM THE NORTH EDGE OF ASPHALT ACCESS ROAD (PARK SERVICE ROAD)
NORTHING= 1085318.3584 EASTING= 767996.4738



LOCATION MAP
NOT TO SCALE

PROJECT LENGTH = 677.00FT.

INDEX OF SHEETS

SHEET NO.	DESCRIPTION
1	COVER
2	TYPICAL SECTIONS AND GENERAL NOTES
3-4	PLAN AND PROFILE
5	PIPE PROFILES
6	EROSION CONTROL AND STRIPING PLAN
7-8	ROADWAY SECTIONS
9-11	DETAILS

CITY OF O'FALLON
COMMUNITY DEVELOPMENT
DESIGN DIVISION
O'FALLON, MISSOURI

PLAN SUBMITTAL DATE:

02/28/02

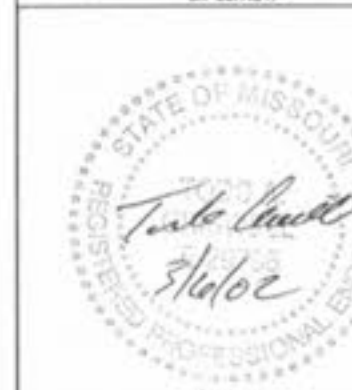
APPROVED:

TODD CRISWELL, P.E.
MANAGING DIRECTOR

DATE: 02/28/02

PROJECT: 01-064

DISCLAIMER OF RESPONSIBILITY
I HEREBY SPECIFY THAT THE DOCUMENTS INTENDED TO BE AUTHORIZED BY MY SEAL ARE LIMITED TO THIS SHEET, AND I HEREBY DISCLAIM ANY RESPONSIBILITY FOR ALL OTHER DRAWINGS, SPECIFICATIONS, ESTIMATES, REPORTS OR OTHER DOCUMENTS OR INSTRUMENTS RELATING TO OR REFERRED TO BE USED FOR ANY PART OR PARTS OF THE ARCHITECTURAL OR ENGINEERING PROJECT OR SURVEY.



SEAL