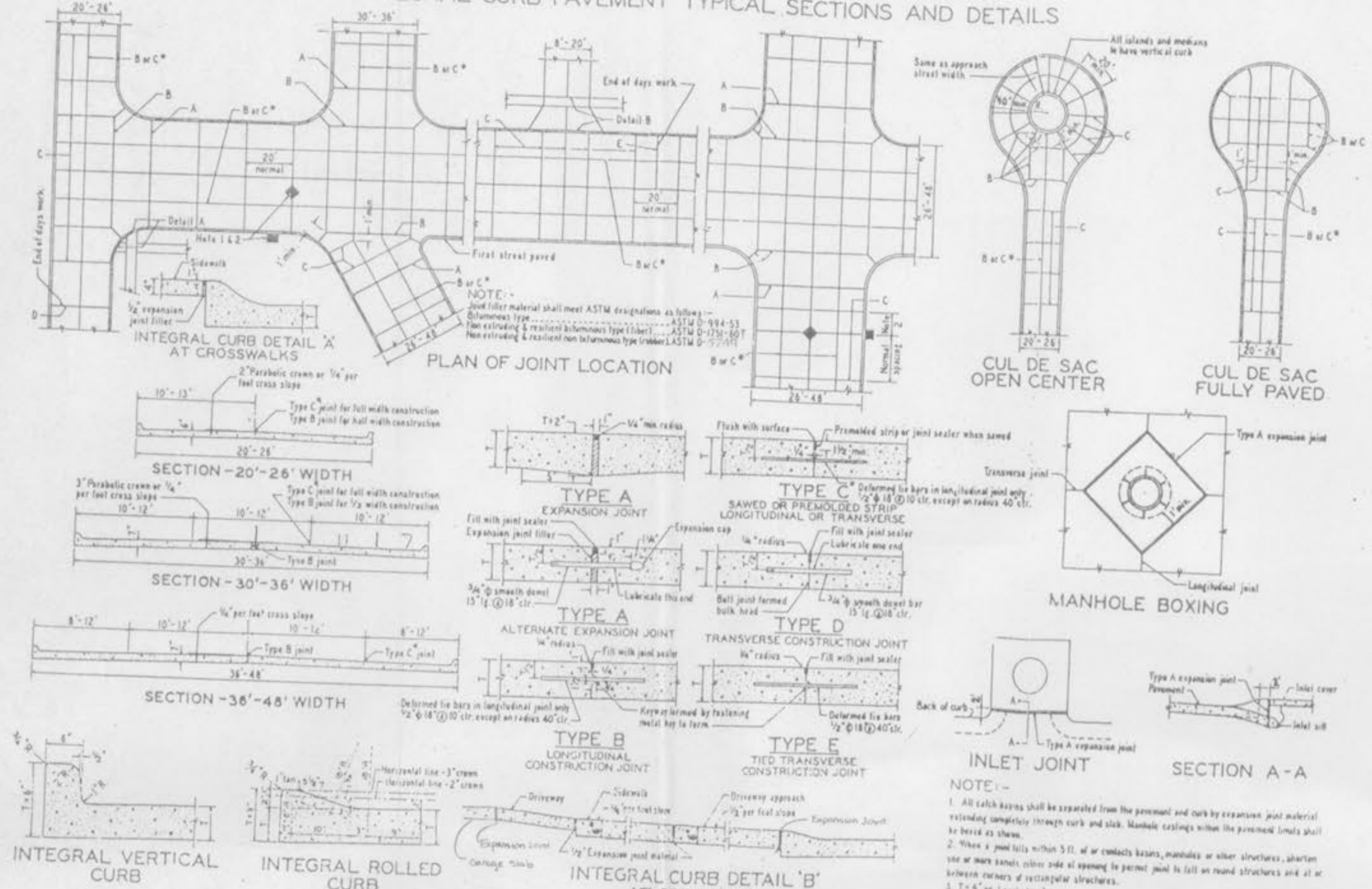


PORTLAND CEMENT CONCRETE
INTEGRAL CURB PAVEMENT TYPICAL SECTIONS AND DETAILS



NOTE: Joint filler material shall meet ASTM designations as follows:
 Bituminous Type: ASTM D-1191-53
 Non extruding & resilient non bituminous Type: ASTM D-133-50
 Non extruding & resilient non bituminous Type: ASTM D-133-50

NOTE:
 1. A 'I' JOINT IS REQUIRED AT THE CURB & GARAGE FOR ALL DRIVEWAYS LOCATED ON THE OUTER EDGE OF CURVED PAVEMENT.
 2. A 'X' JOINT IS REQUIRED AT THE CURB & GARAGE FOR ALL DRIVEWAYS LOCATED ON TRANSVERSE SITUATIONS OF PAVEMENT OR ON THE INNER EDGE OF CURVED PAVEMENT.
 3. EXPANSION JOINT MATERIAL MUST EXTEND THROUGH THE FULL DEPTH OF THE PAVEMENT.

NOTE:
 JOINT SEALANT MATERIAL SHALL MEET ASTM AND AASHTO DESIGNATIONS AS FOLLOWS:
 ASTM D-3405 AASHTO M-309 OR
 ASTM D-1180-74 AASHTO M-117S-04
 OR THE LATEST REVISION THEREOF

GENERAL NOTES

- Do not scale drawings when dimensions.
- Sections are symmetrical about construction centerline.
- For longitudinal and transverse joints, show and label expansion and contraction joints in the Placement Construction Data for the joints and Curb/Driveway Drawing (S202).
- All necessary pavement markings by local surface County.
- Surface shown must meet slope of labor contract.
- For details on an steel structure in a ditch refer to the same drawing and details for 'Grate and Inlets', Standard Drawing C202.
- Subsoil thickness shown is 'F' type Private Driveway and 'F' type Commercial Driveway per Entrance Construction Data.
- Expansion when required shall be indicated in the Placement Construction Data.
- Material, Utility, Sewer and Side-slope Extension and detailed in C. Charles County.

BUCKETT CREEK SEWER DISTRICT
TYPICAL CREEK CROSSING

Grouted Rip-Rap is required at all creek crossings where the embankments crossed are steeper than 1 vertical to 2 horizontal ratio slope; and also where there is 3.0 feet or less cover over top of pipe.

Rip-Rap on lower 3/4 of slope. Grade upper 1/4 of slope at 1 vertical to 2 horizontal slope for sod or 1 vertical to 2.5 horizontal slope for seed and straw.

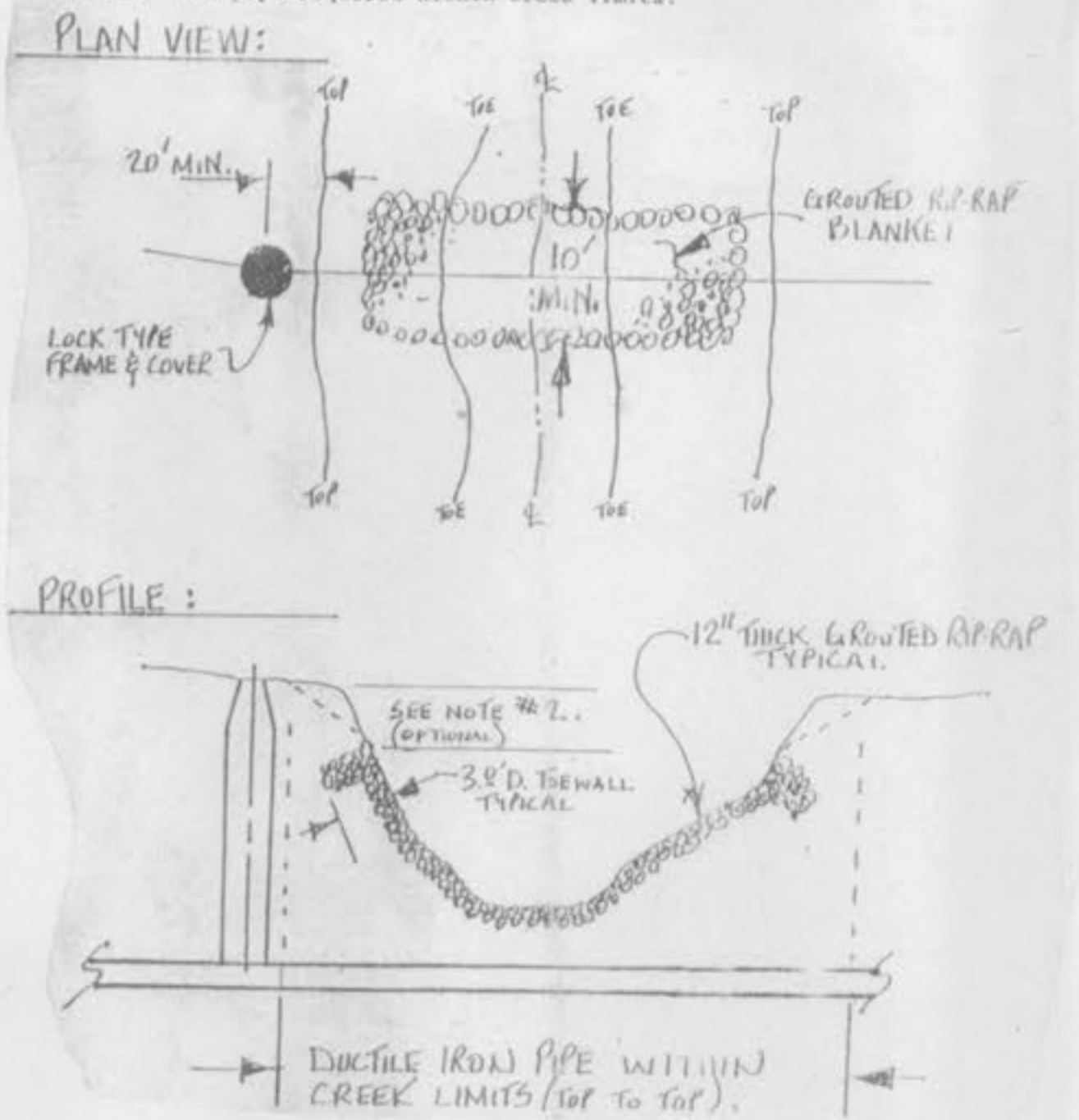
Rip-Rap to be "MSD-5" Gradation, minimum 12" thick, grouted with 8 sack mix, sand cement slurry, broom finish.

Incorporate a 3 foot deep toe wall on embankment's upper edge of Rip-Rap.

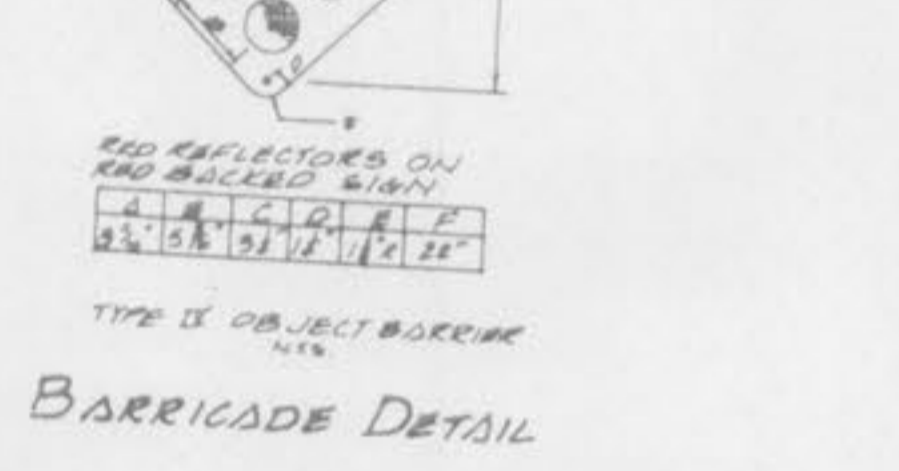
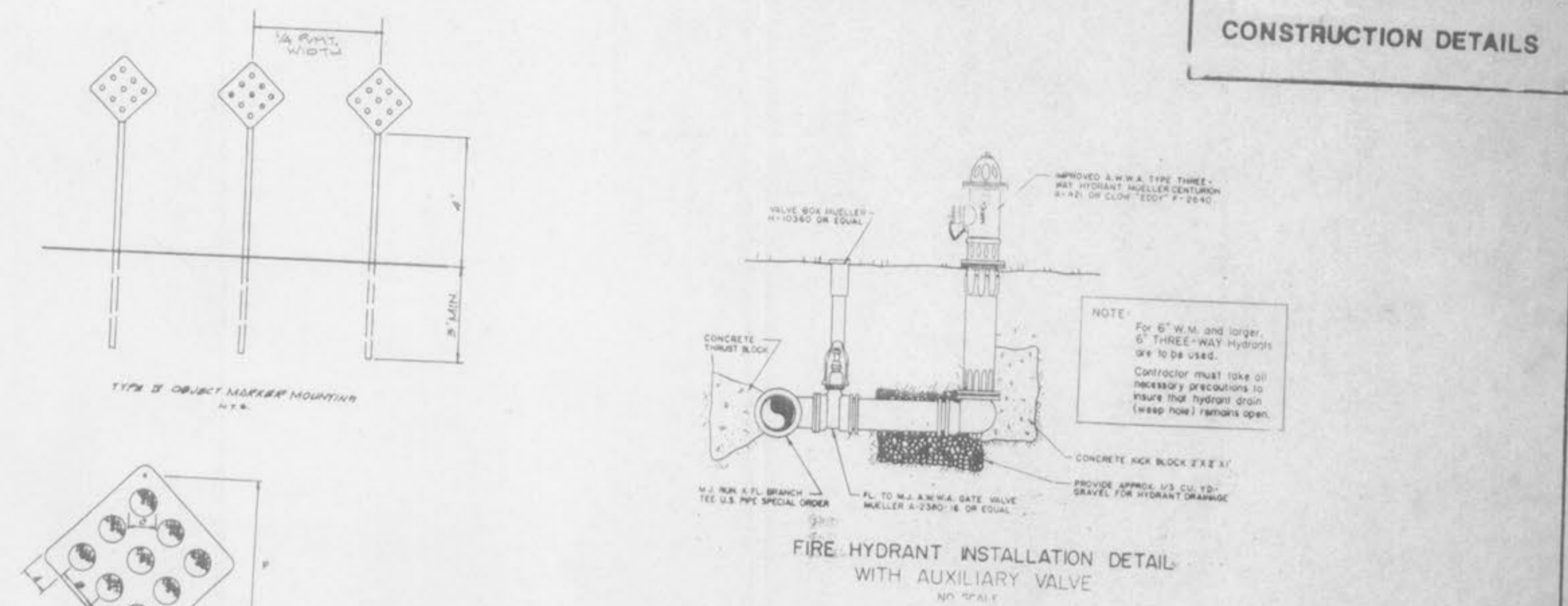
Top surface of Rip-Rap should not be higher than adjacent ground surface.

If pipe has less than 12" cover, a paved channel may be required.

Ductile iron pipe required within creek limits.



CONSTRUCTION DETAILS



THRUST-BLOCK SCHEDULE

Minimum thrust-block bearing dimensions to bear against undisturbed earth.

WATER MAIN SIZE (INCHES)	BEND 45°	BEND 22 1/2°	TEE	VALVE	CROSS
2"	0.5' x 1'	0.5' x 1'	0.5' x 1'	0.5' x 1'	0.5' x 1'
4"	1' x 1'	1' x 1'	2' x 1'	2' x 1'	1' x 1'
6"	1.5' x 1'	1' x 1'	2' x 1'	2' x 1'	1' x 1'
8"	2' x 1'	1' x 1'	2' x 2.5'	2' x 2'	1' x 1'
10"	2' x 2.5'	1.5' x 2'	2' x 3.5'	2' x 3'	2' x 2'
12"	2' x 3.5'	1.5' x 2.5'	3' x 3.5'	3' x 3'	2' x 3'
16"	3' x 4'	2' x 3'	4' x 4.5'	3' x 4.5'	3' x 3'
18"	3' x 4.5'	2' x 3.5'	5' x 5'	4' x 5'	4' x 4'

