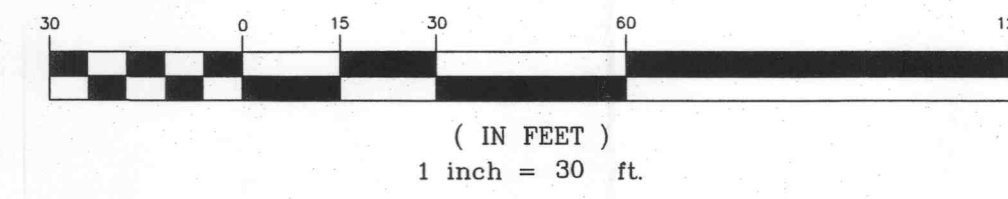


NOTE:

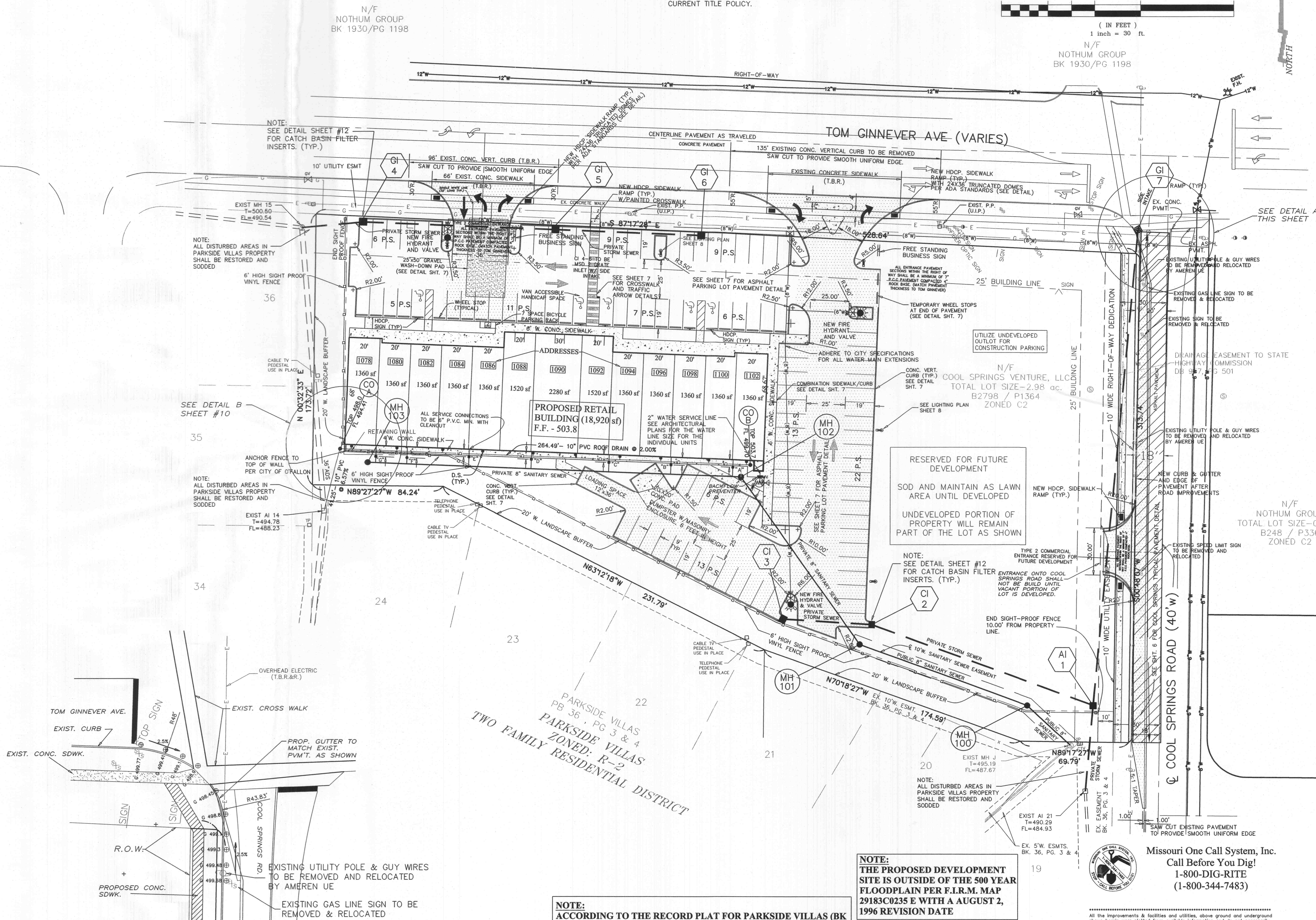
- 1) THE BASIS OF BEARINGS FOR THIS SURVEY IS THE PLAT OF "PARKSIDE VILLAS" AS RECORDED IN PLAT BOOK 36, PAGES 3 & 4 OF THE ST. CHARLES COUNTY, MISSOURI RECORDER'S OFFICE.
- 2) THIS SURVEY WAS PERFORMED WITHOUT THE BENEFIT OF A CURRENT TITLE POLICY.

GRAPHIC SCALE



N/F
NOTHUM GROUP
BK 1930/PG 1198

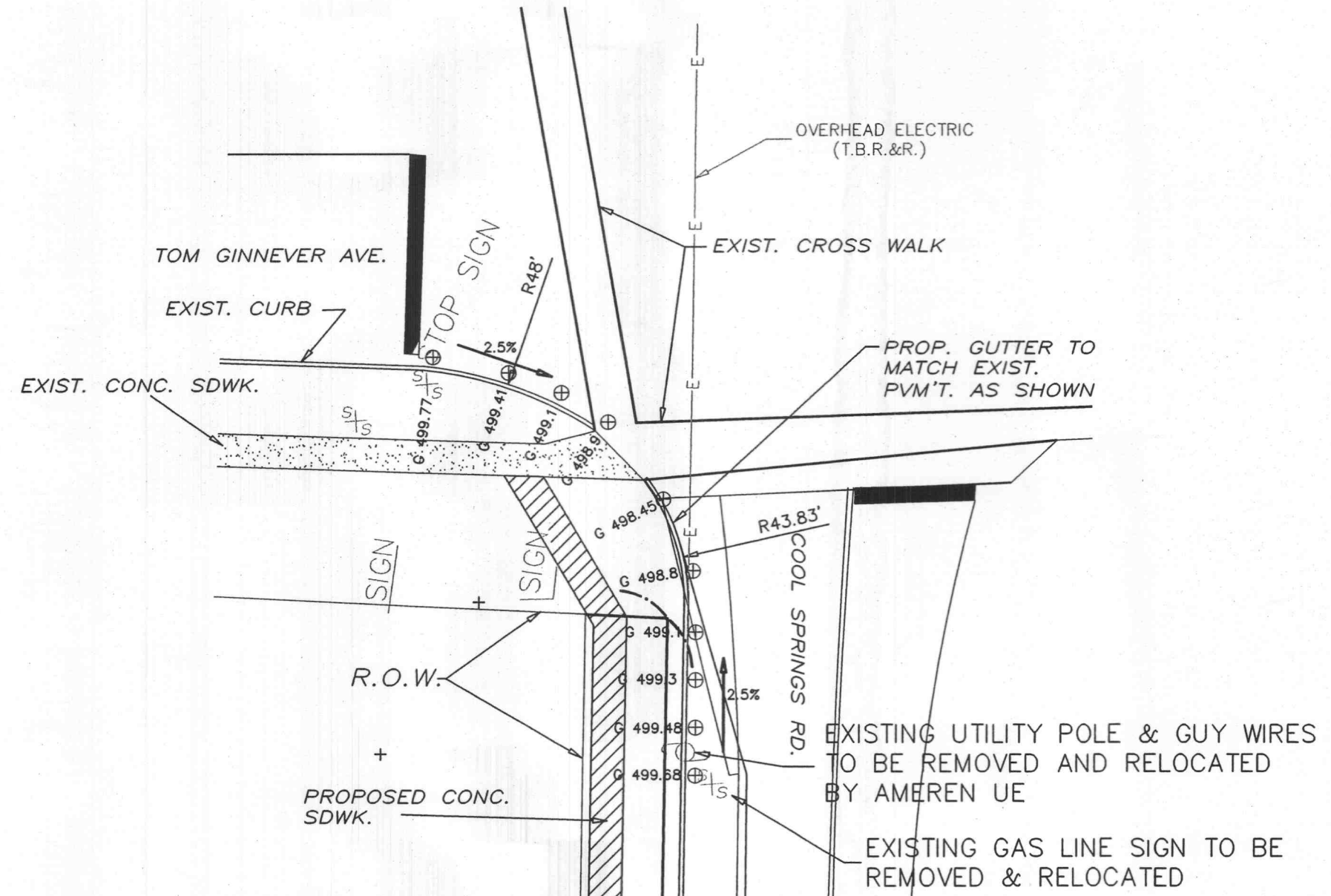
N/F
NOTHUM GROUP
BK 1930/PG 1198



LEGEND

- Drainage Flow Arrow
- Sanitary Sewer (Proposed)
- Sanitary Sewer (Existing)
- Storm Sewer (Proposed)
- Storm Sewer (Existing)
- 8" Water Line and size
- Tee and Valve
- Fire Hydrant
- Cap
- Existing Fence Line
- Existing Tree Line
- Existing Contour
- Street Sign
- Power Pole
- Guy Wire
- Light Standard (TYP Height 24')
- Gas Line
- Electric Line
- Telephone Line
- Gas Valve
- Gas Meter
- Water Valve
- Water Meter
- Found Old Iron Pipe
- Found Old Iron Rod
- Reinforced Concrete Pipe
- Corrugated Metal Pipe
- Polyvinyl Chloride Pipe
- Cast Iron Pipe
- End Pipe
- Flared End Section
- Clean Out
- M.H.
- Manhole
- T.B.R.
- To Be Removed
- Set I.R.
- Set Iron Rod with Cap
- O.I.P.
- Old Iron Pipe
- New Light Standard

DETAIL A



NOTE:
ACCORDING TO THE RECORD PLAT FOR PARKSIDE VILLAS (BK 36 PAGE 3), "DETENTION FOR THE FUTURE COMMERCIAL DEVELOPMENT AREA HAS BEEN PROVIDED FOR IN THE DETENTION BASIN SHOWN PER IMPROVEMENT PLANS FOR PARKSIDE VILLAS APPROVED BY THE CITY OF O'FALLON ENGINEERING DEPARTMENT, JUNE 19, 1998."

NOTE:
THE PROPOSED DEVELOPMENT SITE IS OUTSIDE OF THE 500 YEAR FLOODPLAIN PER F.I.R.M. MAP 29183C0235 E WITH A AUGUST 2, 1996 REVISION DATE

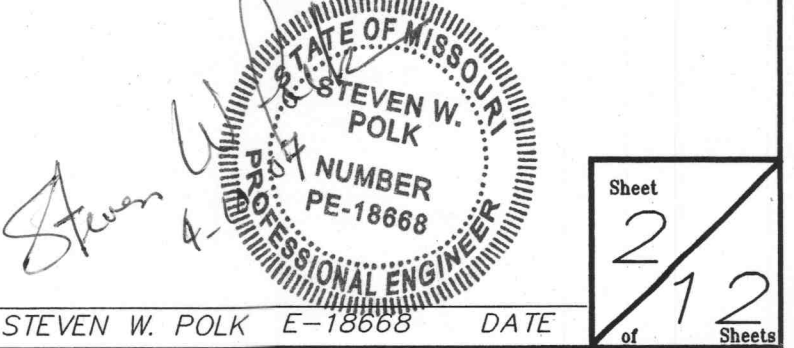
NOTE:
THERE ARE NO EXISTING TREES ON THE PROPERTY

Missouri One Call System, Inc.
Call Before You Dig!
1-800-DIG-RITE
(1-800-344-7483)



O'FALLON P&Z # 904.01
04/06/06

ENGINEERS CERTIFICATION:
The following applies to ALL sheets and documents involved in the preparation of the plans and documents for this project. The responsibility for Professional Engineering liability on this project is limited to the set of plans displaying the signature and an original stamped seal of the Engineer on each sheet. ALL responsibility is Disclaimed, until ALL review agency approvals are granted, for all other plan sheets issued prior to this issue date; for this set when another set is issued after this date; if the sheets are used individually instead of a set. This applies for ALL sheets and documents involved in this project whether this certification appears on it or not. Copyright. All Rights Reserved.
ZAVRADINOS & ASSOCIATES, INC. DBA
ZAVRADINOS ENGINEERING & SURVEYING



Sheet
2
12
of
12
Sheets