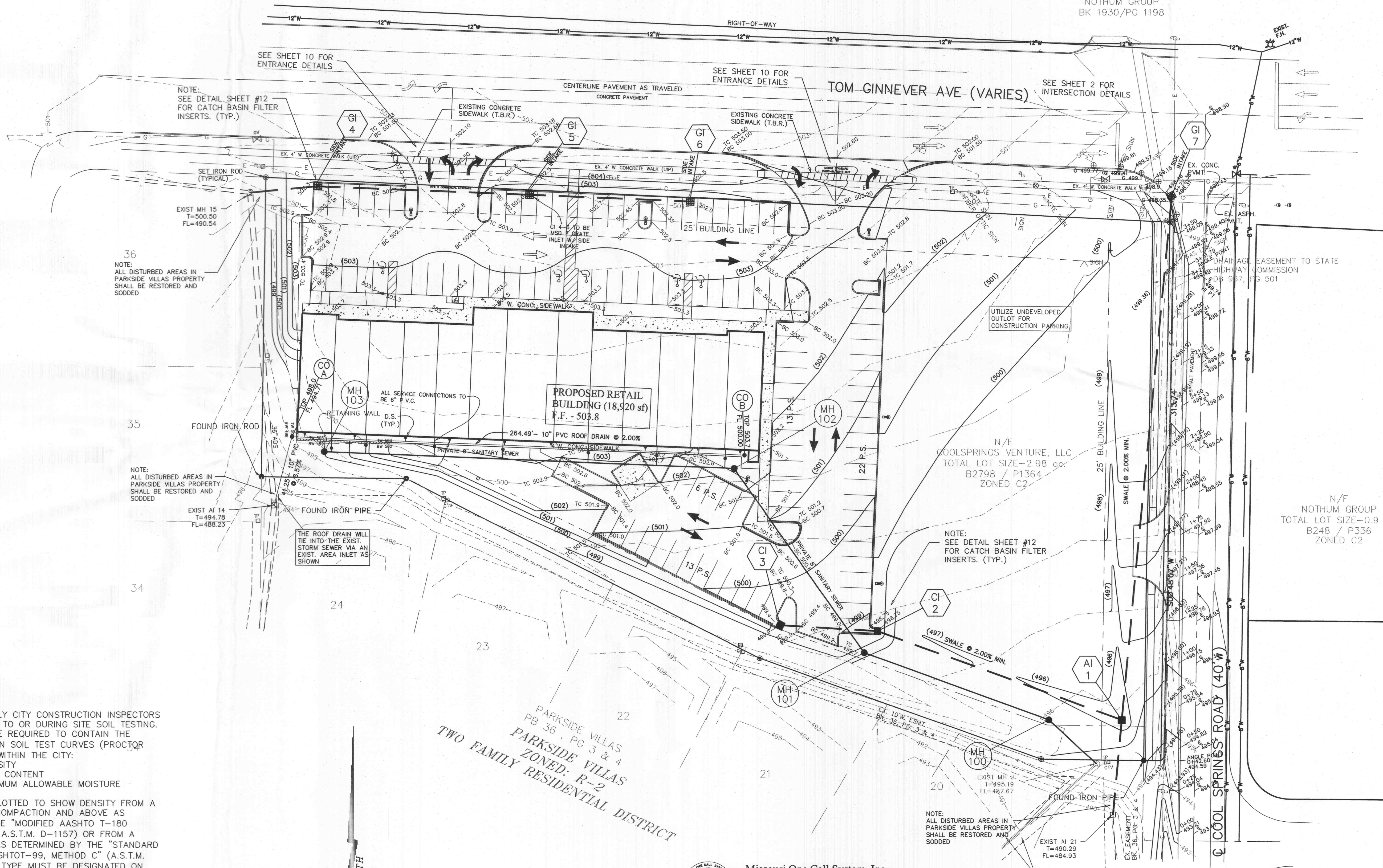


N/F
 NOTHUM GROUP
 BK 1930/PG 1198

N/F
 NOTHUM GROUP
 BK 1930/PG 1198



LEGEND

- Drainage Flow Arrow
- Sanitary Sewer (Proposed)
- Sanitary Sewer (Existing)
- Storm Sewer (Proposed)
- Storm Sewer (Existing)
- Water Line and size
- Tee and Valve
- Fire Hydrant
- Cap
- Existing Fence Line
- Existing Tree Line
- Existing Contour
- Proposed Contour
- Street Sign
- Power Pole
- Guy Wire
- Light Standard (TYP Height 24')
- Gas Line
- Electric Line
- Telephone Line
- Gas Valve
- Gas Meter
- Water Valve
- Water Meter
- Found Old Iron Pipe
- Found Old Iron Rod
- Reinforced Concrete Pipe
- Corrugated Metal Pipe
- Polyvinyl Chloride Pipe
- Cast Iron Pipe
- End Pipe
- Flared End Section
- Clean Out
- M.H.
- Manhole
- T.B.R.
- To Be Removed
- Set I.R.
- Set Iron Rod with Cap
- O.I.P.
- Old Iron Pipe
- O.I.R.
- Old Iron Rod
- New Light Standard

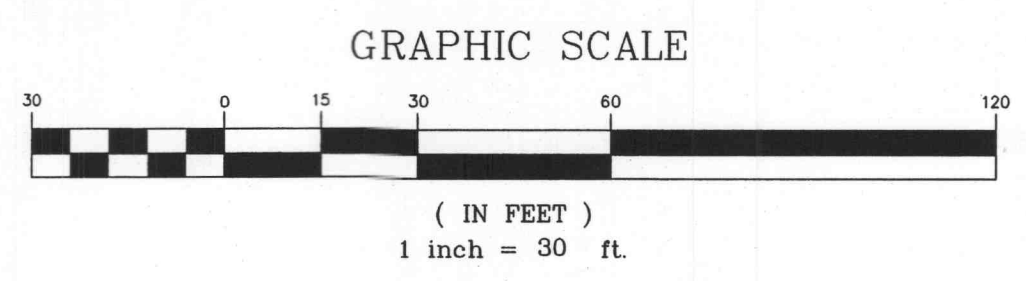
36
 NOTE:
 ALL DISTURBED AREAS IN
 PARKSIDE VILLAS PROPERTY
 SHALL BE RESTORED AND
 SOODED

NOTE:
 ALL DISTURBED AREAS IN
 PARKSIDE VILLAS PROPERTY
 SHALL BE RESTORED AND
 SOODED

NOTE:
 SEE DETAIL SHEET #12
 FOR CATCH BASIN FILTER
 INSERTS. (TYP.)

THE ROOF DRAIN WILL
 TIE INTO THE EXIST.
 STORM SEWER VIA AN
 EXIST. AREA INLET AS
 SHOWN

1. DEVELOPER MUST SUPPLY CITY CONSTRUCTION INSPECTORS WITH SOIL REPORTS PRIOR TO OR DURING SITE SOIL TESTING. THE SOIL REPORTS WILL BE REQUIRED TO CONTAIN THE FOLLOWING INFORMATION ON SOIL TEST CURVES (PROCTOR REPORTS) FOR PROJECTS WITHIN THE CITY:
- A. MAXIMUM DRY DENSITY
 - B. OPTIMUM MOISTURE CONTENT
 - C. MAXIMUM AND MINIMUM ALLOWABLE MOISTURE CONTENT
 - D. CURVE MUST BE PLOTTED TO SHOW DENSITY FROM A MINIMUM OF 90% COMPACTION AND ABOVE AS DETERMINED BY THE "MODIFIED AASHTO T-180 COMPACTION TEST A.S.T.M. D-1157) OR FROM A MINIMUM OF 95% AS DETERMINED BY THE "STANDARD PROCTOR TEST ASSHTOT-99, METHOD C" (A.S.T.M. D-698). PROCTOR TYPE MUST BE DESIGNATED ON DOCUMENT.
 - E. CURVE MUST HAVE AT LEAST 5 DENSITY POINTS WITH MOISTURE CONTENT AND SAMPLE LOCATIONS LISTED ON DOCUMENT.
 - F. SPECIFIC GRAVITY
 - G. NATURAL MOISTURE CONTENT
 - H. LIQUID LIMIT
 - I. PLASTIC LIMIT.



PARKSIDE VILLAS
 PB 36 , PG 3 & 4
 PARKSIDE VILLAS
 ZONED: R-2
 TWO FAMILY RESIDENTIAL DISTRICT

NOTE:
 ALL DISTURBED AREAS IN
 PARKSIDE VILLAS PROPERTY
 SHALL BE RESTORED AND
 SOODED



Missouri One Call System, Inc.
 Call Before You Dig!
 1-800-DIG-RITE
 (1-800-344-7483)

All the improvements & facilities and utilities, above ground and underground shown herein were plotted from available information and do not necessarily reflect the actual existence, nonexistence, elevation, size, type, number or location of these or other improvements, facilities, or utilities. The General Contractor and/or owner shall be responsible for verifying the actual location & elevation of all improvements, facilities, & utilities, shown or not shown, and said improvements, facilities, & utilities shall be located in the field prior to any grading, excavation or construction of any improvements. These provisions shall in no way absolve any party from complying with the Underground Facility Safety & Damage Prevention Act, Chapter 319, RSMo. CALL MISSOURI ONE-CALL, 1-800-DIG-RITE.

O'FALLON P&Z # 904.01
 04/06/06

ENGINEERS' CERTIFICATION:
 The following applies to ALL sheets and documents involved in the preparation of the plans and documents for this project. The responsibility for Professional Engineering liability on this project is limited to the set of plans displaying the signature and an original stamped seal of the Engineer on each sheet. ALL responsibility is Disclaimed: until ALL review agency approvals are granted, for all other plan sheets issued prior to this issue date, for this set when another set is issued after this date, if the sheets are used individually instead of a set. This applies for ALL sheets and documents involved in this project whether this certification appears on it or not. Copyright. All Rights Reserved.
 ZAVRADINOS & ASSOCIATES, INC. DBA
 ZAVRADINOS ENGINEERING & SURVEYING

