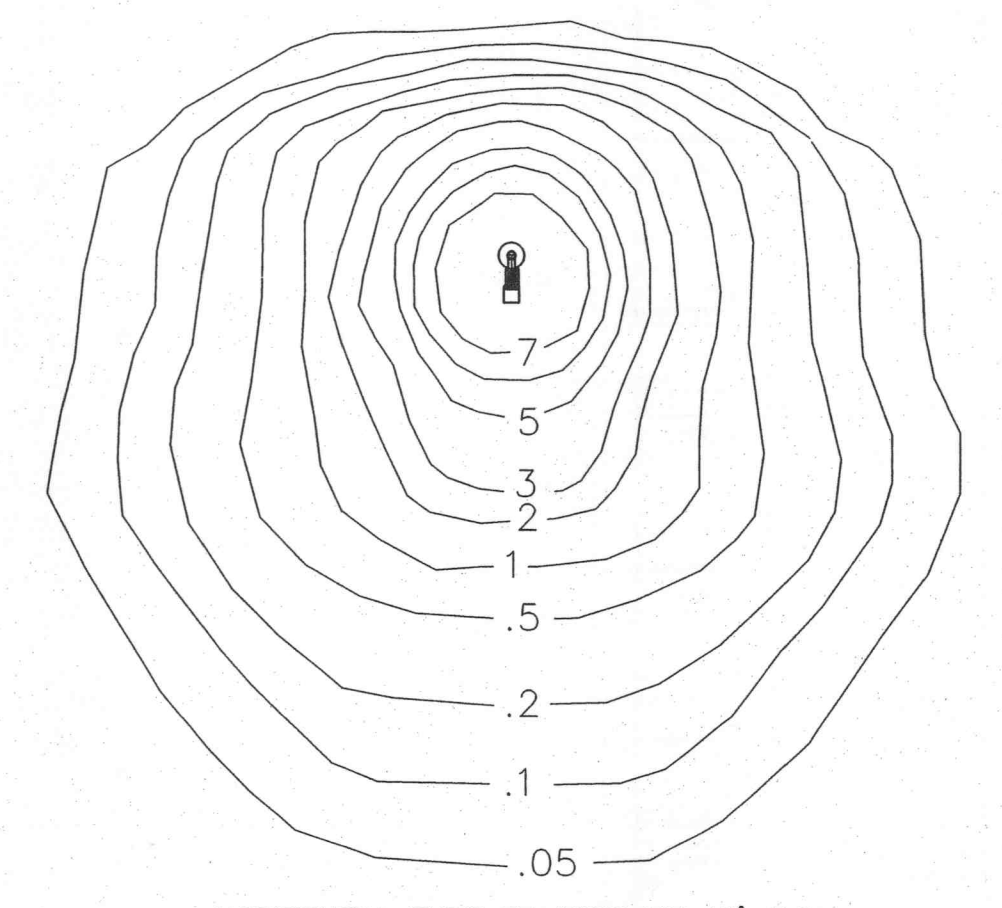


- LIGHTING NOTES:**
1. EXTERIOR LIGHTING AS MEASURED AT THE PROPERTY LINE, SHALL NOT EXCEED 0.5 FOOT-CANDLES.
  2. LIGHTING VALUES TO BE REVIEWED ON SITE PRIOR TO THE FINAL OCCUPANCY INSPECTION. CORRECTIONS WILL NEED TO BE MADE IF NOT IN COMPLIANCE WITH CITY STANDARDS.
  3. REFER TO ARCHITECTURAL PLANS FOR BUILDING MOUNTED LIGHTING.
  4. ALL LIGHT POLES TO BE LOCATED IN LANDSCAPED ISLANDS.

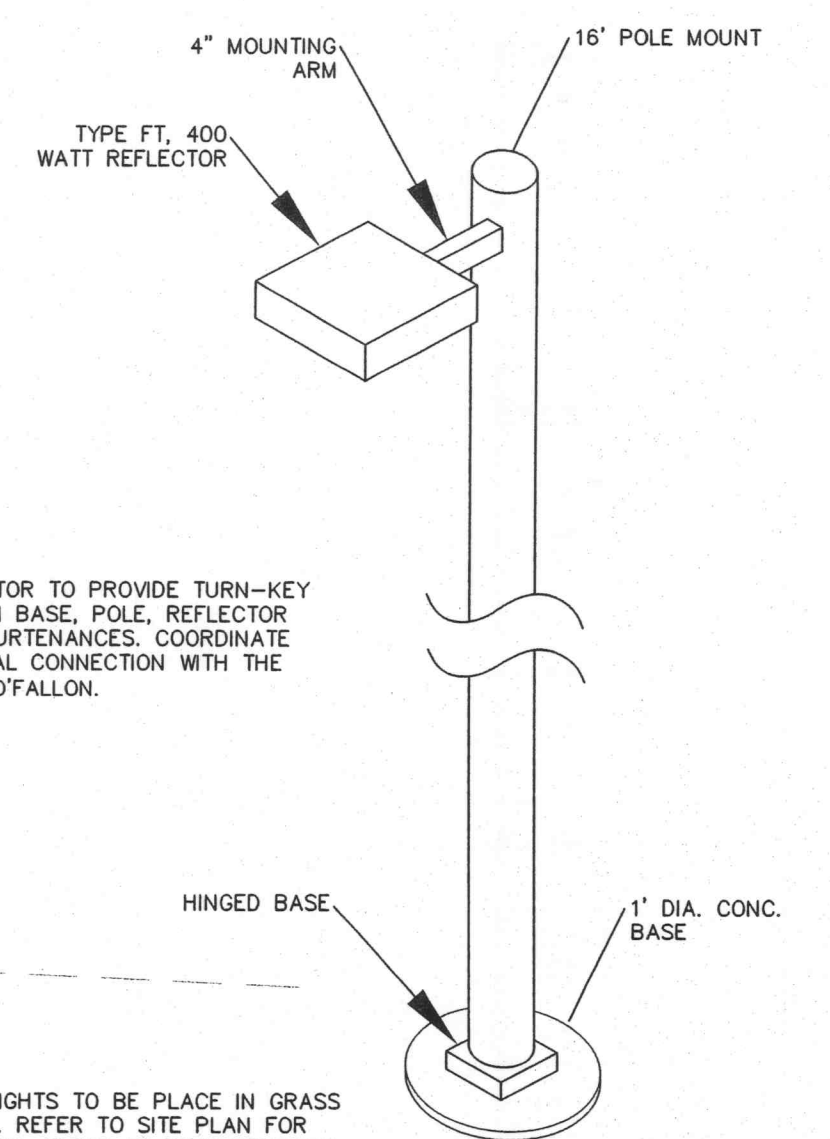


HORIZONTAL TYPE FT 400W MH 16' A.G.  
 (NOT TO SCALE)

LIGHT FIXTURE BASED ON:  
 BIEBER PARK SERIES  
 MODEL PK5  
 SIZE 10  
 400W  
 SINGLE-FIXTURE.

NOTE: CONTRACTOR TO VERIFY WITH MANUFACTURER FOR COMPLIANCE WITH O'FALLON EXTERIOR LIGHTING STANDARDS PRIOR TO CONSTRUCTION. OWNER AND CITY TO BE CONSULTED FOR FINAL MAKE AND MODEL SELECTION.

NOTE: WALL PACK LIGHTING WILL NOT BE ALLOWED ON THE REAR OF THE BUILDING PER CITY STANDARDS.



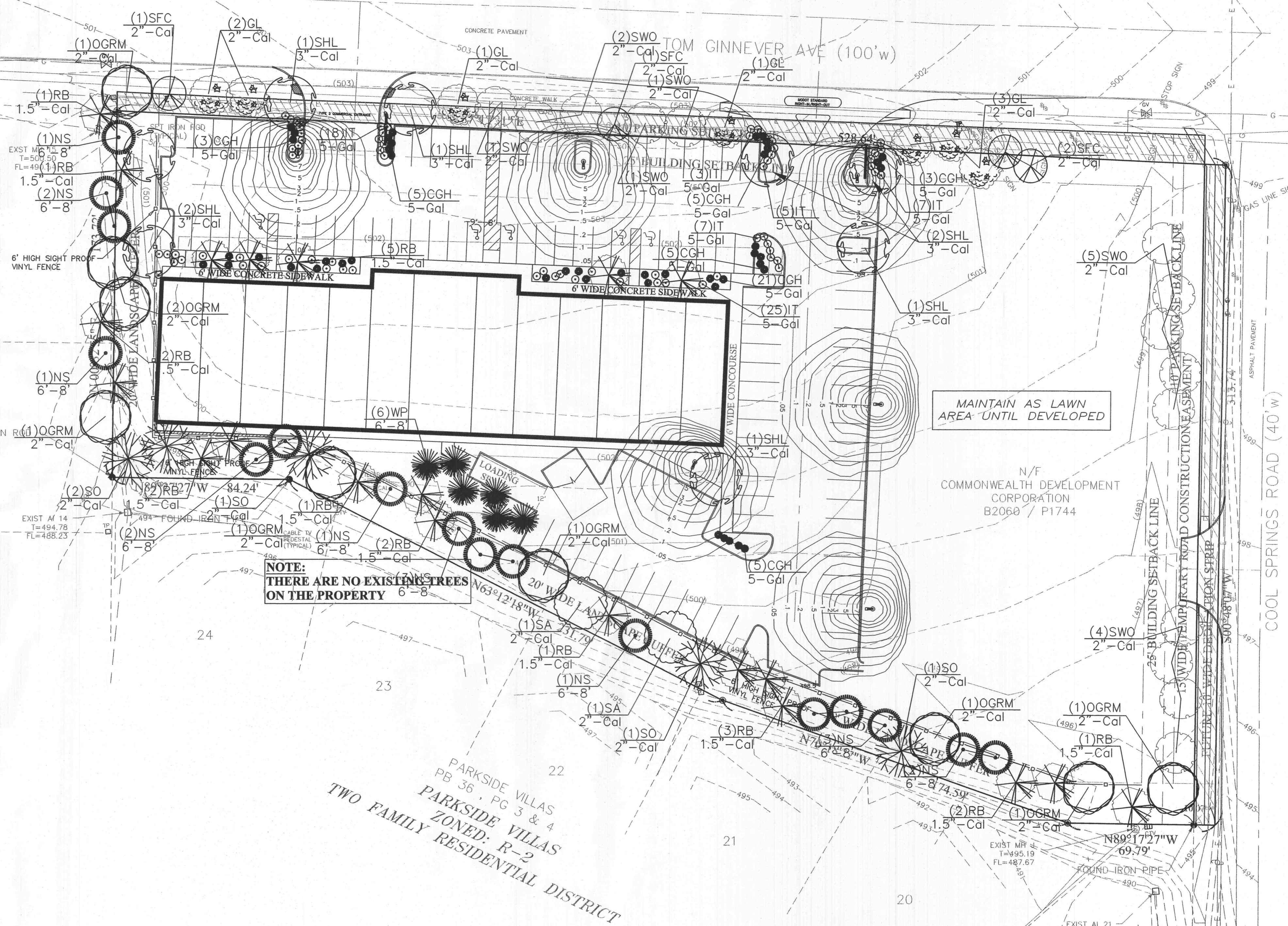
STREET LIGHT DETAIL  
 NOT TO SCALE

NOTE: THIS PLAN TO BE USED FOR SCHEMATICS ONLY. CONTRACTOR TO VERIFY WITH MANUFACTURER FOR ALL ELECTRICAL INFORMATION AND DATA.

**PLANTING NOTES**

1. CONTRACTOR TO VERIFY WITH A LANDSCAPE ARCHITECT FOR PLANT TYPE, PLACEMENT AND AVAILABILITY. NOTIFY THE OWNER AND THE CITY OF O'FALLON OF ANY DISCREPANCIES.
2. CONTRACTOR SHALL VERIFY ALL PLANT QUANTITIES. PLANT QUANTITIES ON PLANS PREVAIL OVER THOSE LISTED IN PLANT LIST.
3. CONTRACTOR SHALL VERIFY SITE CONDITIONS, INCLUDING UNDERGROUND UTILITIES PRIOR TO START OF WORK. REPORT TO OWNERS REPRESENTATIVE ANY CONDITIONS THAT MAY AFFECT CONTRACT. CONTRACTOR SHALL REPAIR ANY DAMAGE TO SITE ELEMENTS DUE TO CONTRACTORS ACTIVITY AT NO EXTRA COST TO OWNER.
4. CONTRACTOR SHALL COORDINATE AND SCHEDULE INSTALLATION OF LANDSCAPING WITH THE OWNERS REPRESENTATIVE.
5. CONTRACTOR SHALL COORDINATE AND SCHEDULE STAKING ALONG WITH LOCATION OF BED EDGES WITH IRRIGATION CONTRACTOR IF NEEDED.
6. MULCH ENTIRE SHRUB PLANTING AREAS WITH 3" DEPTH SHREDDED BARK MULCH. ALL SHRUB BEDS IN LAWN AREAS TO HAVE SPADE CUT EDGE. PROVIDE 4" MULCH RING AROUND ALL NEW TREES WITH 3" DEPTH OF SHREDDED BARK MULCH. GROUND COVER BEDS TO RECEIVE MINIMUM 2" DEPTH OF SHREDDED BARK MULCH.
7. FORMAL LINES AND GROUPINGS OF SPECIES OF TREE SHALL BE MATCHED FOR SIZE AND FORM. AREAS DISTURBED DURING CONSTRUCTION SHALL BE SEEDED WITH SPECIFIED SEED MIX. REFER TO CIVIL DRAWINGS FOR ANY ADDITIONAL AND PROPOSED CONDITIONS.
8. ALL RETAINING WALLS SHALL BE CONSTRUCTED OF INORGANIC MATERIAL SUCH AS MASONRY, BRICK, OR STONE. NO PAINTING OF MASONRY WALLS TO BE ALLOWED.
9. SILTATION CONTROL MEASURES TO BE IN PLACE PRIOR TO GRADING OPERATIONS AND SHALL BE MAINTAINED THROUGHOUT THE PROJECT DURING DEVELOPMENT.
10. IF PHASED DEVELOPMENT TAKES PLACE WHERE MORE THAN SIX MONTHS HAS PASSED, THE DEVELOPER SHALL ESTABLISH TEMPORARY LAWN AREAS.
11. SILTATION CONTROL MEASURES SHALL FOLLOW THE AMERICAN NURSERYMEN STANDARDS.
12. GROUND COVER AND LAWNS SHALL FOLLOW THE AMERICAN NURSERYMEN STANDARDS.
13. ALL LANDSCAPE MATERIALS SHALL BE IN COMPLIANCE WITH AMERICAN STANDARD FOR NURSERY STOCK AND INSTALLED IN GOOD, SOUND, WORKMANLIKE MANNER AND ACCORDING TO ACCEPTED GOOD PLANTING PROCEDURES FOR THE ST. LOUIS REGION.
14. PLANTING MATERIALS SHALL BE ORNAMENTED TYPES FOUND TO BE HARDY IN USDA ZONES 5 AND 6.
15. SWALES TO BE SOEDED IF NECESSARY IN UNFAVORABLE CLIMATE CONDITIONS DURING THE GRADING OPERATION.
16. ALL LANDSCAPING TO FOLLOW CITY OF O'FALLON SECTIONS 400.405 - 400.430 WITHIN ARTICLE "X" "LANDSCAPING AND SCREENING REQUIREMENTS".

- SEEDING GUIDELINES:**
- VEGETATIVE ESTABLISHMENT FOR URBAN DEVELOPMENT SITES
- APPENDIX A
- SEEDING RATES:**
- PERMANENT:**
- TALL FESCUE - 30 LBS./AC.  
 SMOOTH BROME - 20 LBS./AC.  
 COMBINED: FESCUE @ 15 LBS./AC. AND BROME @ 10 LBS./AC.
- TEMPORARY:**
- WHEAT OR RYE - 150 LBS./AC. (3.5 LBS./1,000 SF.)  
 OATS - 120 LBS./AC. (2.75 LBS./1,000 SF.)
- SEEDING PERIODS:**
- FESCUE AND BROME - MARCH 1 TO JUNE 1  
 AUGUST 1 TO OCTOBER 1
- WHEAT OR RYE - MARCH 15 TO NOVEMBER 1  
 OATS - MARCH 15 TO SEPTEMBER 15
- MULCH RATES:** USE STRAW MULCH W/NETTING - 100 LBS./1,000 SF.  
 THE MULCH MUST BE DRY, UNCHOPPED AND UNWEATHERED.  
 SPREAD THE MULCH BY HAND OR MACHINE AND TIE DOWN W/NETTING.
- FERTILIZER RATES:** NITROGEN 30 LBS./AC.  
 PHOSPHATE 30 LBS./AC.  
 POTASSIUM 30 LBS./AC.  
 LIME 600 LBS./AC. ENM\*
- \*ENM=EFFEKTIVE NEUTRALIZING MATERIAL PER STATE EVALUATION OF QUARRIED ROCK.



NOTE:  
 THERE ARE NO EXISTING TREES  
 ON THE PROPERTY

Missouri One Call System, Inc.  
 Call Before You Dig!  
 1-800-DIG-RITE  
 (1-800-344-7483)

All the improvements & facilities and utilities, above ground and underground shown herein were plotted from available information and do not necessarily reflect the actual existence, nonexistence, elevation, size, type, number or location of these or other improvements, facilities, or utilities. The General Contractor and/or owner shall be responsible for verifying the actual location & elevation of all improvements, facilities, & utilities, shown or not shown, and said improvements, facilities, & utilities shall be located in the field prior to any grading, excavation or construction of any improvements. These provisions shall in no way absolve any part from complying with the Underground Facility Safety & Damage Prevention Act, Chapter 319, RSMo.

CALL MISSOURI ONE-CALL, 1-800-DIG-RITE.