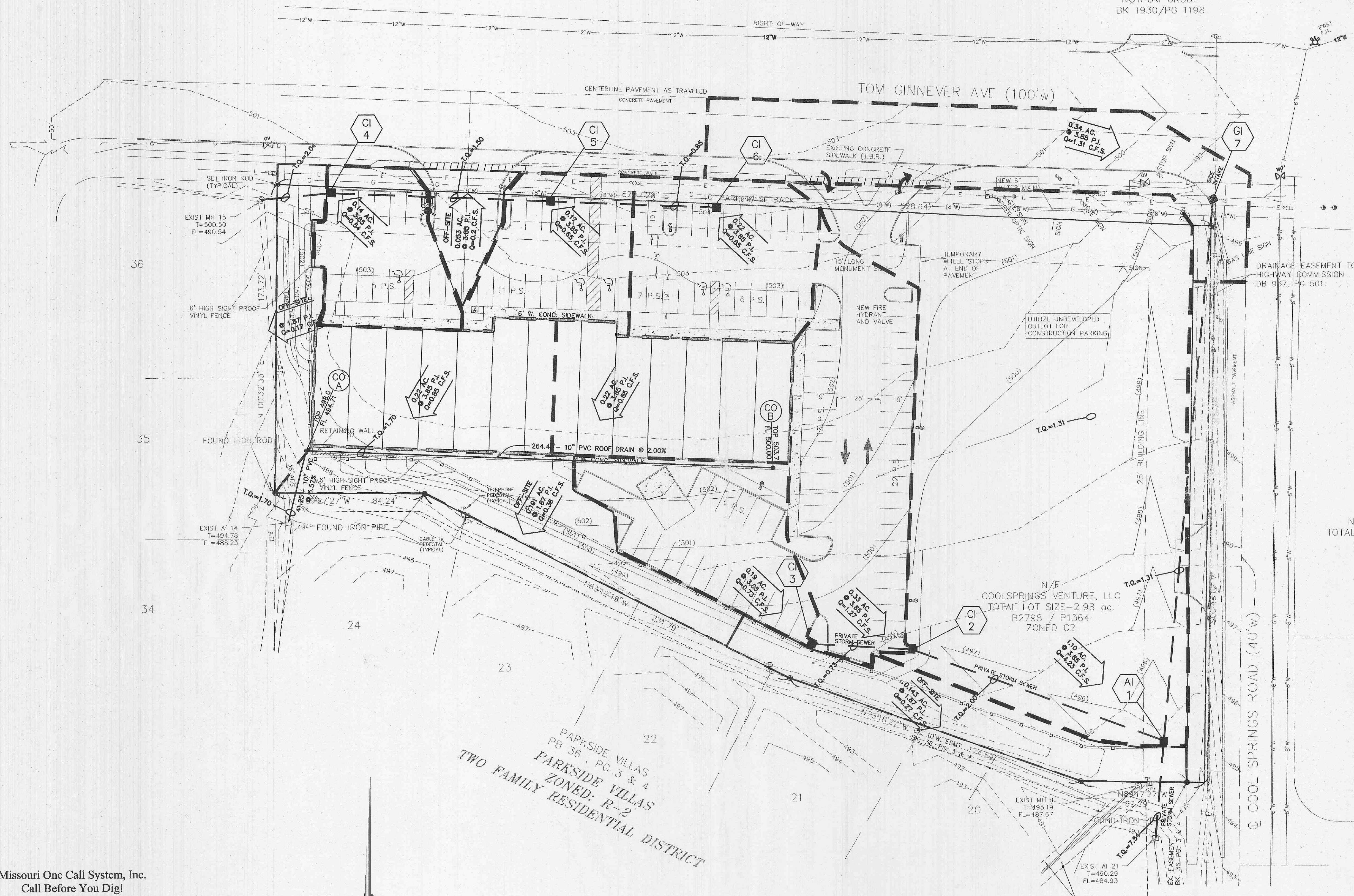


N/F  
 NOTHUM GROUP  
 BK 1930/PG 1198

N/F  
 NOTHUM GROUP  
 BK 1930/PG 1198



**LEGEND**

- Drainage Flow Arrow
- Sanitary Sewer (Proposed)
- Sanitary Sewer (Existing)
- Storm Sewer (Proposed)
- Storm Sewer (Existing)
- 8" W Line and size
- Tee and Valve
- Fire Hydrant
- Cap
- Existing Fence Line
- Existing Tree Line
- Existing Contour
- Proposed Contour
- Street Sign
- Power Pole
- Guy Wire
- Light Standard (TYP Height 24')
- Gas Line
- Electric Line
- Telephone Line
- Gas Valve
- Gas Meter
- Water Valve
- Water Meter
- Found Old Iron Pipe
- Reinforced Concrete Pipe
- Corrugated Metal Pipe
- Polyvinyl Chloride Pipe
- Cast Iron Pipe
- End Pipe
- Flared End Section
- Clean Out
- M.H. Manhole
- T.B.R. To Be Removed
- Set I.R. Set Iron Rod with Cap
- O.I.P. Old Iron Pipe
- O.I.R. Old Iron Rod
- New Light Standard

N/F  
 NOTHUM GROUP  
 TOTAL LOT SIZE-0.9 ac.  
 B248 / P336  
 ZONED C2

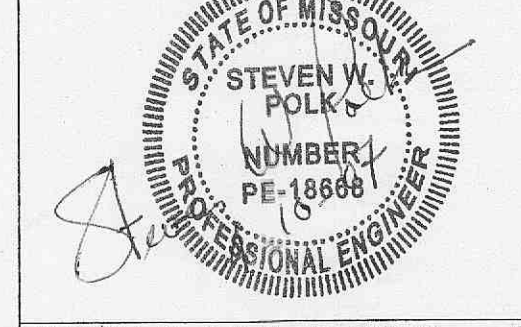
N/E  
 COOLSPRINGS VENTURE, LLC  
 TO FAC LOT SIZE-2.98 ac.  
 B2798 / P1364  
 ZONED C2

PARKSIDE VILLAS  
 PB 36, PG 3 & 4  
 PARKSIDE VILLAS  
 ZONED: R-2  
 TWO FAMILY RESIDENTIAL DISTRICT

N/F  
 NOTHUM GROUP  
 TOTAL LOT SIZE-5.86 ac.  
 B1930 / P1213  
 ZONED R1

**O'FALLON P&Z # 904.01**  
**04/06/06**

**ENGINEERS CERTIFICATION:**  
 The following applies to ALL sheets and documents involved in the preparation of the plans and documents for this project. The responsibility for Professional Engineering liability on this project is limited to the set of plans displaying the signature and an original stamped seal of the Engineer on each sheet. ALL responsibility is Disclaimed: until ALL review agency approvals are granted, for all other plan sheets issued prior to this issue date, for this set when another set is issued after this date, if the sheets are used individually instead of a set. This applies for ALL sheets and documents involved in this project whether this certification appears on it or not. Copyright. All Rights Reserved.  
**ZAVRADINOS & ASSOCIATES, INC. DBA ZAVRADINOS ENGINEERING & SURVEYING**



STEVEN W. POLK E-18668 DATE

Sheet  
**5**  
 of  
**12**  
 Sheets

**NOTE:**  
 THIS PLAN TO BE USED FOR DRAINAGE AREA PURPOSES ONLY. SEE IMPROVEMENT PLANS FOR ALL IMPROVEMENTS, DETAILS, SPOT ELEVATIONS, GRADING, ETC.



Missouri One Call System, Inc.  
 Call Before You Dig!  
 1-800-DIG-RITE  
 (1-800-344-7483)

All the improvements & facilities and utilities, above ground and underground shown herein were plotted from available information and do not necessarily reflect the actual existence, nonexistence, elevation, size, type, number or location of these or other improvements, facilities, or utilities. The General Contractor and/or owner shall be responsible for verifying the actual location & elevation of all improvements, facilities, & utilities shown or not shown, and said improvements, facilities, & utilities shall be located in the field prior to any grading, excavation or construction of any improvements. These provisions shall in no way obviate any part from complying with the Underground Facility Safety & Damage Prevention Act, Chapter 319, RSMo.  
 CALL MISSOURI ONE-CALL, 1-800-DIG-RITE

