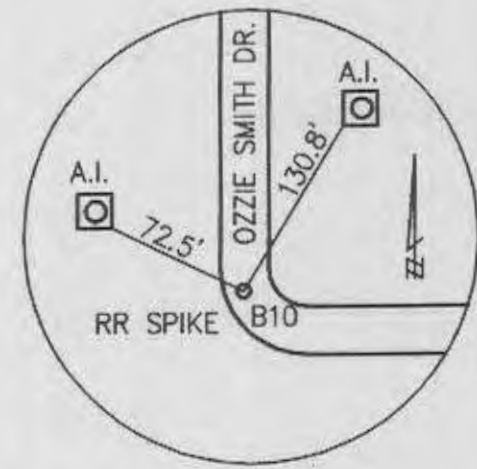


SCALES:
1" = 50' HOR
1" = 10' VER

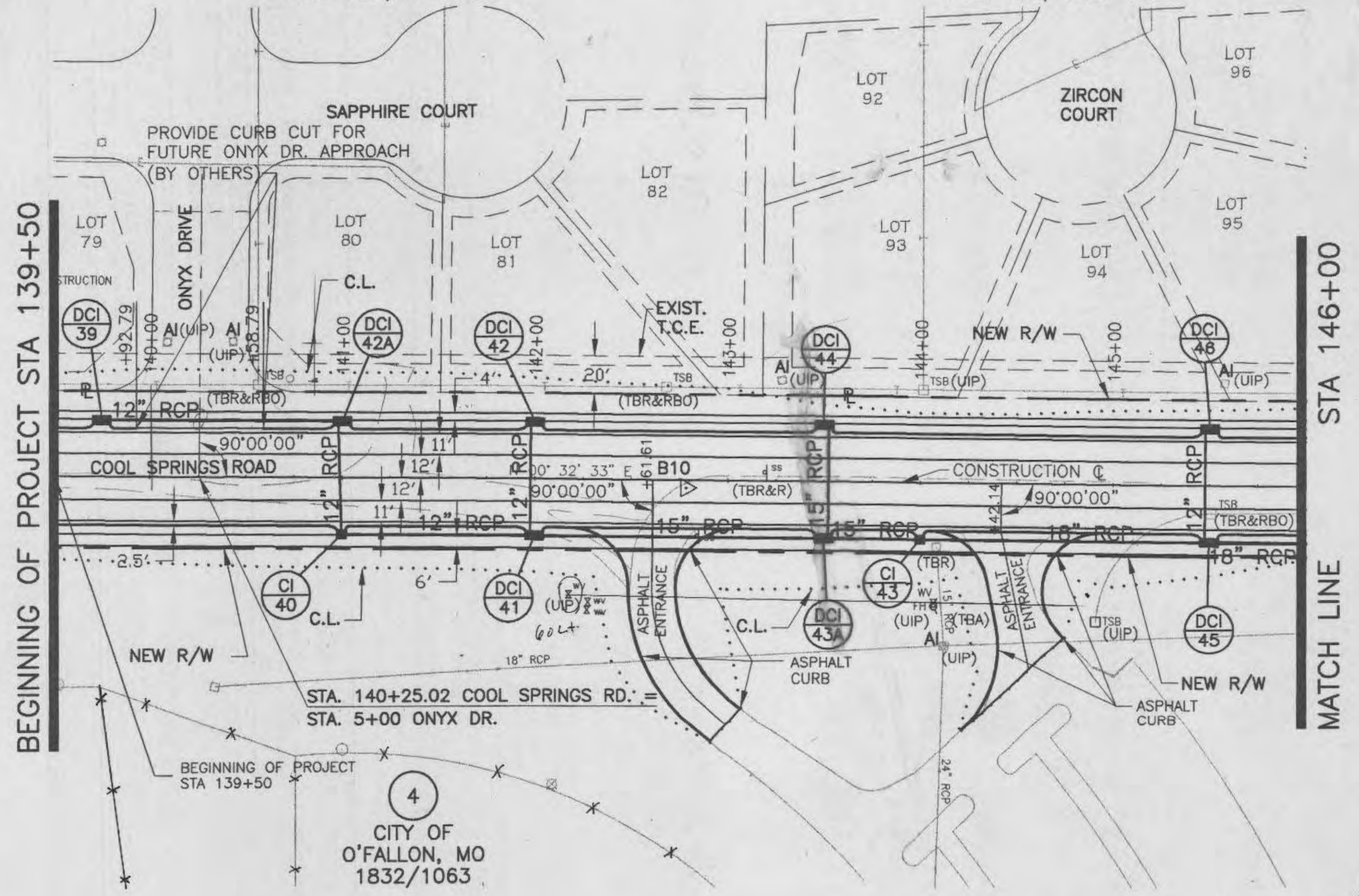


SURVEY CONTROL POINT
B10 - CHISELED "+" TOP OF RR SPIKE AT SOUTH END OF OZZIE SMITH DRIVE AT 90° BEND TO EAST.
STA 142+78.60, 4.04' RT
NORTHING EASTING
1086144.743 768255.538

UNDERGROUND FACILITIES, STRUCTURES AND UTILITIES HAVE BEEN PLOTTED FROM AVAILABLE SURVEYS AND RECORDS AND, THEREFORE, THEIR LOCATIONS MUST BE CONSIDERED APPROXIMATE ONLY. THERE MAY BE OTHERS THE EXISTENCE OF WHICH IS AT PRESENT NOT KNOWN. VERIFICATION OF THE LOCATIONS OF UNDERGROUND UTILITIES, SHOWN OR NOT SHOWN, WILL BE THE RESPONSIBILITY OF THE CONTRACTOR.

DIAMOND POINTE PLAT THREE
P.B. 35, PG. 189

DIAMOND POINTE PLAT TWO
P.B. 35, PG. 131

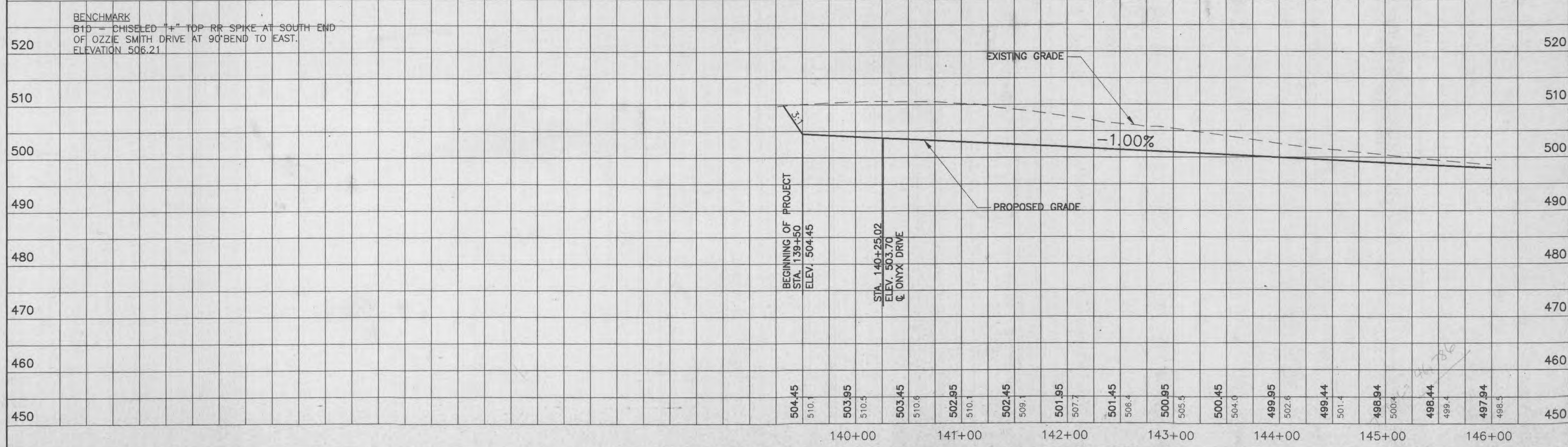


BEGINNING OF PROJECT STA 139+50

MATCH LINE STA 146+00

CITY OF O'FALLON, MO
1832/1063

{ 270' pipe
4-45° bends }



BENCHMARK
B10 - CHISELED "+" TOP RR SPIKE AT SOUTH END OF OZZIE SMITH DRIVE AT 90° BEND TO EAST.
ELEVATION 506.21

SHEET NUMBER	6	TOTAL SHEETS	107
COOL SPRINGS ROAD	PLAN / PROFILE		
	PAGE 1 OF 8		

ENGINEERS AUTHENTICATION
The responsibility for professional engineering liability on the work, preparation and date hereunder is assumed by the engineer and shall not be assumed by the firm. Responsibility is assumed for all other work shown on this drawing. This work is not to be used for any other purpose without the written consent of the engineer.

PARSONS BRINCKERHOFF



DESIGNED BY:	DAE	DATE:	FEBRUARY 1998
DRAWN BY:	DAE		
CHECKED BY:	EJP		
APPROVED BY:	JLE		
PROJECT:	PB BOOKER PROJECT		
FILE NO.:	32031T		
DRAWING FILE:	L:\32031T\0202\EA01E1		
FILENAME:	C-PNP-04.DWG		

PARSONS BRINCKERHOFF
1831 CHESTNUT STREET
ST. LOUIS, MO 63103
314-421-1476
FAX: 314-421-1741