

SCALES:  
1" = 50' HOR  
1" = 10' VER



SHEET NUMBER 12 TOTAL SHEETS 107  
COOL SPRINGS ROAD  
PLAN / PROFILE  
PAGE 7 OF 8

AREA REM. = 1,188,815 s.f. (27.291 Ac.)  
ROW = 17,547 s.f. (0.352 Ac.)  
PDE = 21,012 s.f. (0.482 Ac.)  
TCE = 149,736 s.f. (3.438 Ac.)

CURVE DATA (CURVE 7)  
PI STA = 217+74.29  
N = 1089044.06  
E = 773328.27  
Δ = 60°04'40" L  
D = 10'00'00"  
T = 331.32'  
R = 572.96'  
L = 600.78'  
S.E. = 0.04 /FT

**SURVEY CONTROL POINT**  
B23 - CHISELED "4" TOP RR SPIKE IN EAST ASPHALT SHOULDER OF RTE 79, SOUTH OF THE SECOND POWER POLE NORTH OF THE INTERSECTION OF HWY 79 AND PEARL. 285± NORTH OF C PEARL 3.3' WEST OF EAST EDGE OF EAST SHOULDER. STA 220+94.13, 370.69' LT  
NORTHING EASTING  
1089564.445 773217.334

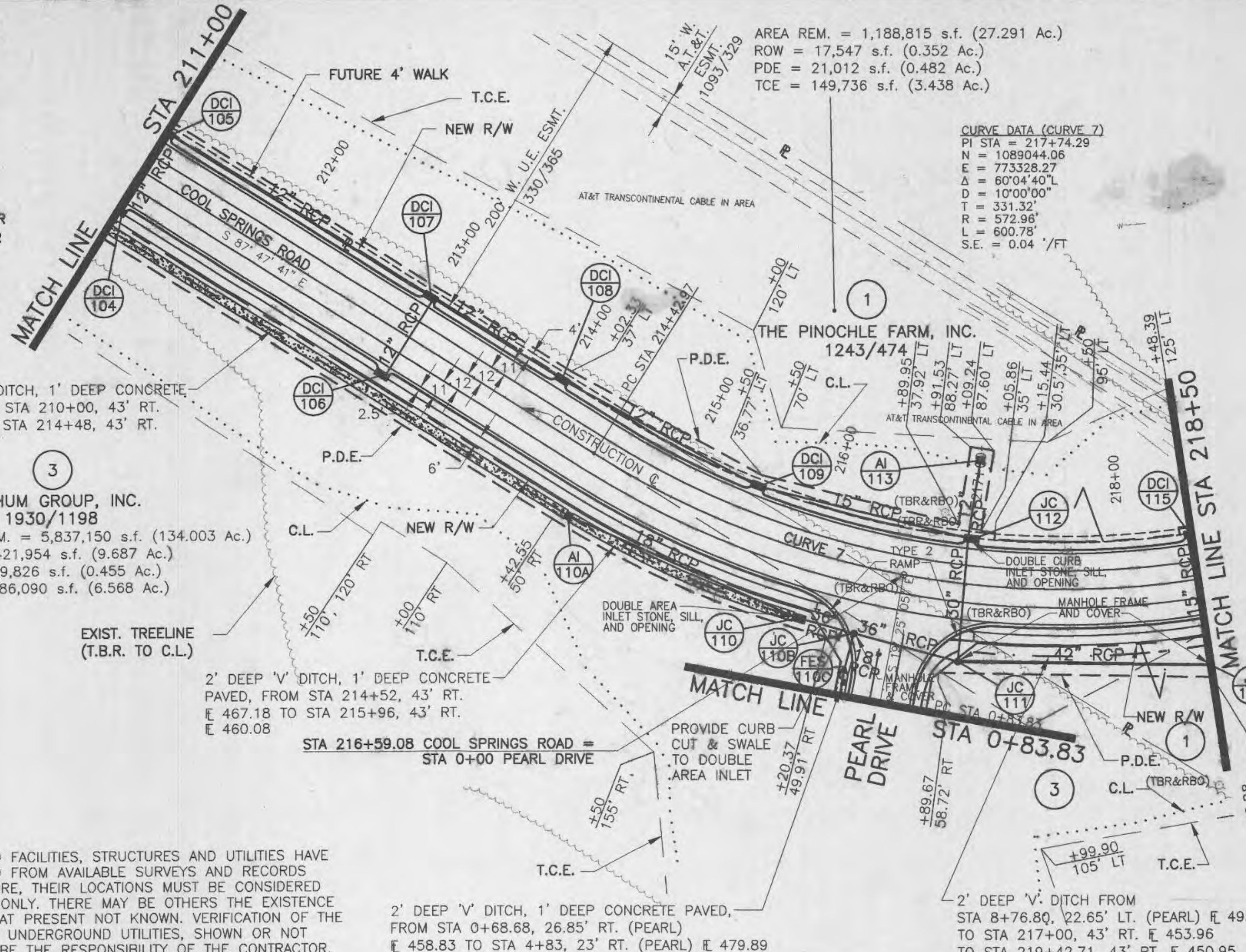
**ENGINEERS AUTHENTICATION**  
The responsibility for professional engineering liability on this project is hereby limited to the set of plans authenticated by the seal, signature and date hereunder. Engineering plans received in this project and modified or amended after this date unless reauthenticated, excludes revisions after this date unless reauthenticated.  
PARSONS BRINCKERHOFF



DATE	REVISIONS BY	DATE

DESIGNED: DATE: FEBRUARY 1999  
DRAWN: DATE: FEBRUARY 1999  
CHECKED: EJP  
APPROVED: JLE  
PB BOOKER PROJECT  
FILE NO. 32031T  
DRAWING FILE: L:\32031T\0202\EAGLEY\FILENAME: C-PNP-10.DWG

**PARSONS BRINCKERHOFF**  
1831 CHESTNUT STREET  
ST. LOUIS, MO 63103  
314-421-1476  
FAX: 314-421-1741



2' DEEP 'V' DITCH, 1' DEEP CONCRETE PAVED, FROM STA 210+00, 43' RT. E 484.25 TO STA 214+48, 43' RT. E 467.18

**3**  
NOTHUM GROUP, INC.  
1930/1198  
AREA REM. = 5,837,150 s.f. (134.003 Ac.)  
ROW = 421,954 s.f. (9.687 Ac.)  
PDE = 19,826 s.f. (0.455 Ac.)  
TCE = 286,090 s.f. (6.568 Ac.)

EXIST. TREELINE (T.B.R. TO C.L.)

2' DEEP 'V' DITCH, 1' DEEP CONCRETE PAVED, FROM STA 214+52, 43' RT. E 467.18 TO STA 215+96, 43' RT. E 460.08

STA 216+59.08 COOL SPRINGS ROAD = STA 0+00 PEARL DRIVE

UNDERGROUND FACILITIES, STRUCTURES AND UTILITIES HAVE BEEN PLOTTED FROM AVAILABLE SURVEYS AND RECORDS AND, THEREFORE, THEIR LOCATIONS MUST BE CONSIDERED APPROXIMATE ONLY. THERE MAY BE OTHERS THE EXISTENCE OF WHICH IS AT PRESENT NOT KNOWN. VERIFICATION OF THE LOCATIONS OF UNDERGROUND UTILITIES, SHOWN OR NOT SHOWN, WILL BE THE RESPONSIBILITY OF THE CONTRACTOR.

2' DEEP 'V' DITCH, 1' DEEP CONCRETE PAVED, FROM STA 0+68.68, 26.85' RT. (PEARL) E 458.83 TO STA 4+83, 23' RT. (PEARL) E 479.89

2' DEEP 'V' DITCH FROM STA 8+76.80, 22.65' LT. (PEARL) E 493.45 TO STA 217+00, 43' RT. E 453.96 TO STA 219+42.71, 43' RT. E 450.95

