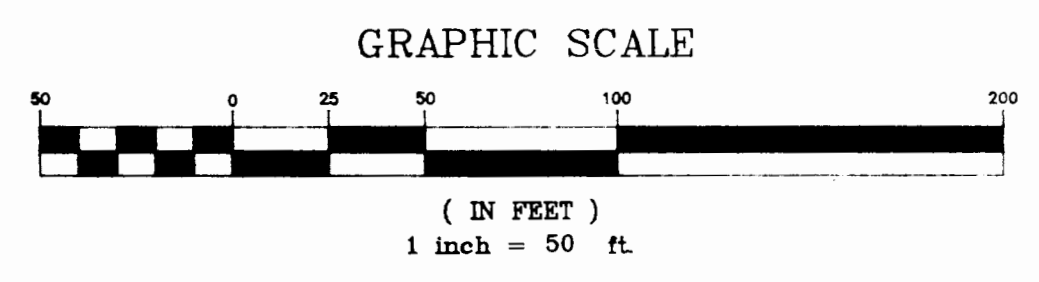
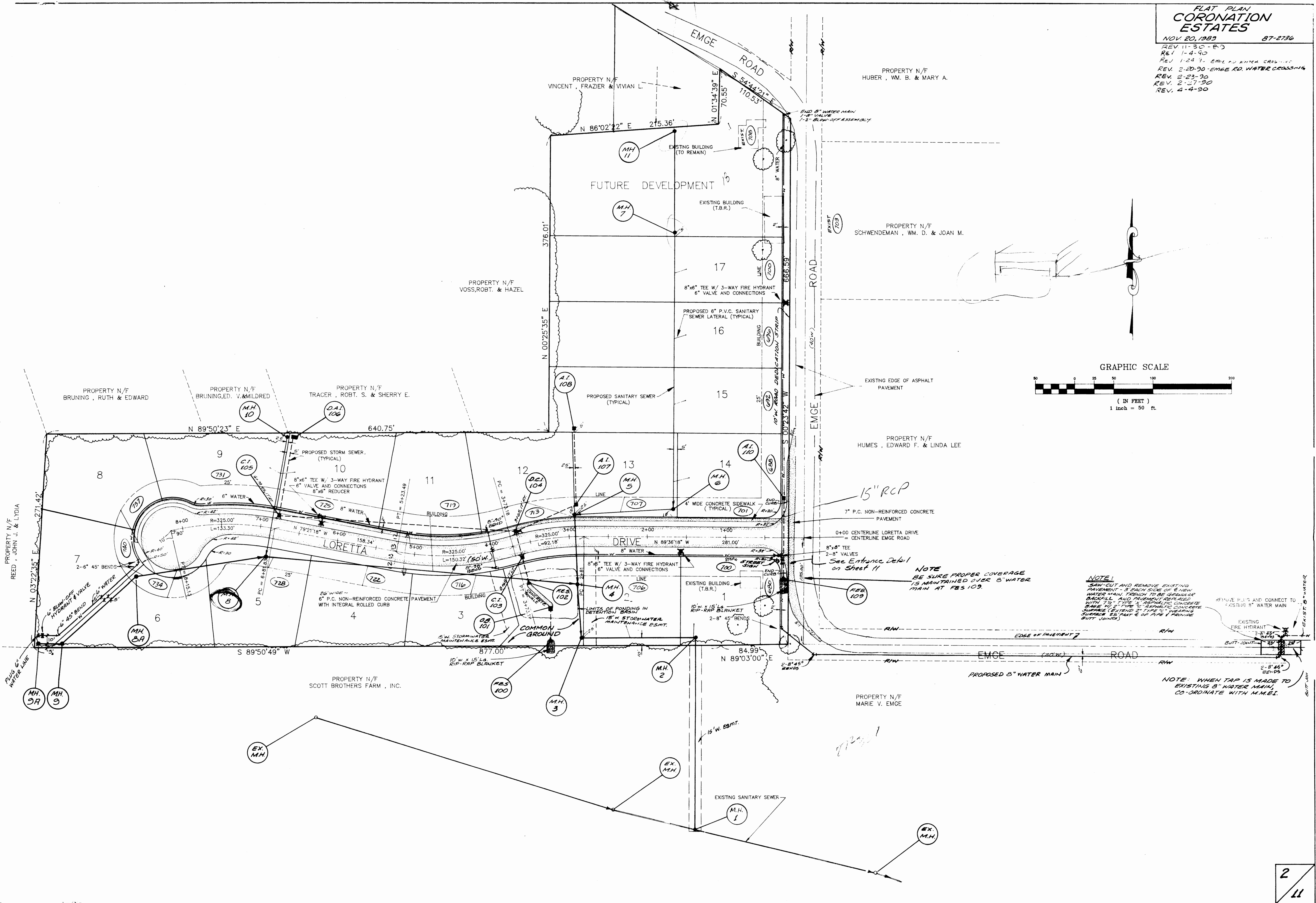


FLAT PLAN
CORONATION
ESTATES

NOV. 20, 1983 87-2736
 REV. 11-30-83
 REV. 1-4-90
 REV. 1-24-90 - EMGE RD. WATER CROSSING
 REV. 2-20-90 - EMGE RD. WATER CROSSING
 REV. 2-23-90
 REV. 2-27-90
 REV. 4-4-90



NOTE: BE SURE PROPER COVERAGE IS MAINTAINED OVER 8" WATER MAIN AT FES 109.

NOTE: SAW-CUT AND REMOVE EXISTING PAVEMENT - 3" EACH SIDE OF NEW WATER MAIN. PATCH TO BE GRAVEL BACKFILL AND PAVEMENT REPAIRED WITH 7 1/2" TYPE II ASPHALTIC CONCRETE BASE W/ 5" TYPE II ASPHALTIC CONCRETE SURFACE (EXTEND 2' TYPE II ASPHALTIC SURFACE TO PART OF PIPE & PROVIDE BUTT JOINTS). REMOVE P.I.'S AND CONNECT TO EXISTING 8" WATER MAIN. EXISTING FIRE HYDRANT BUTT-JOINT.

NOTE: WHEN TAP IS MADE TO EXISTING 8" WATER MAIN, CO-ORDINATE WITH M.M.E.I.