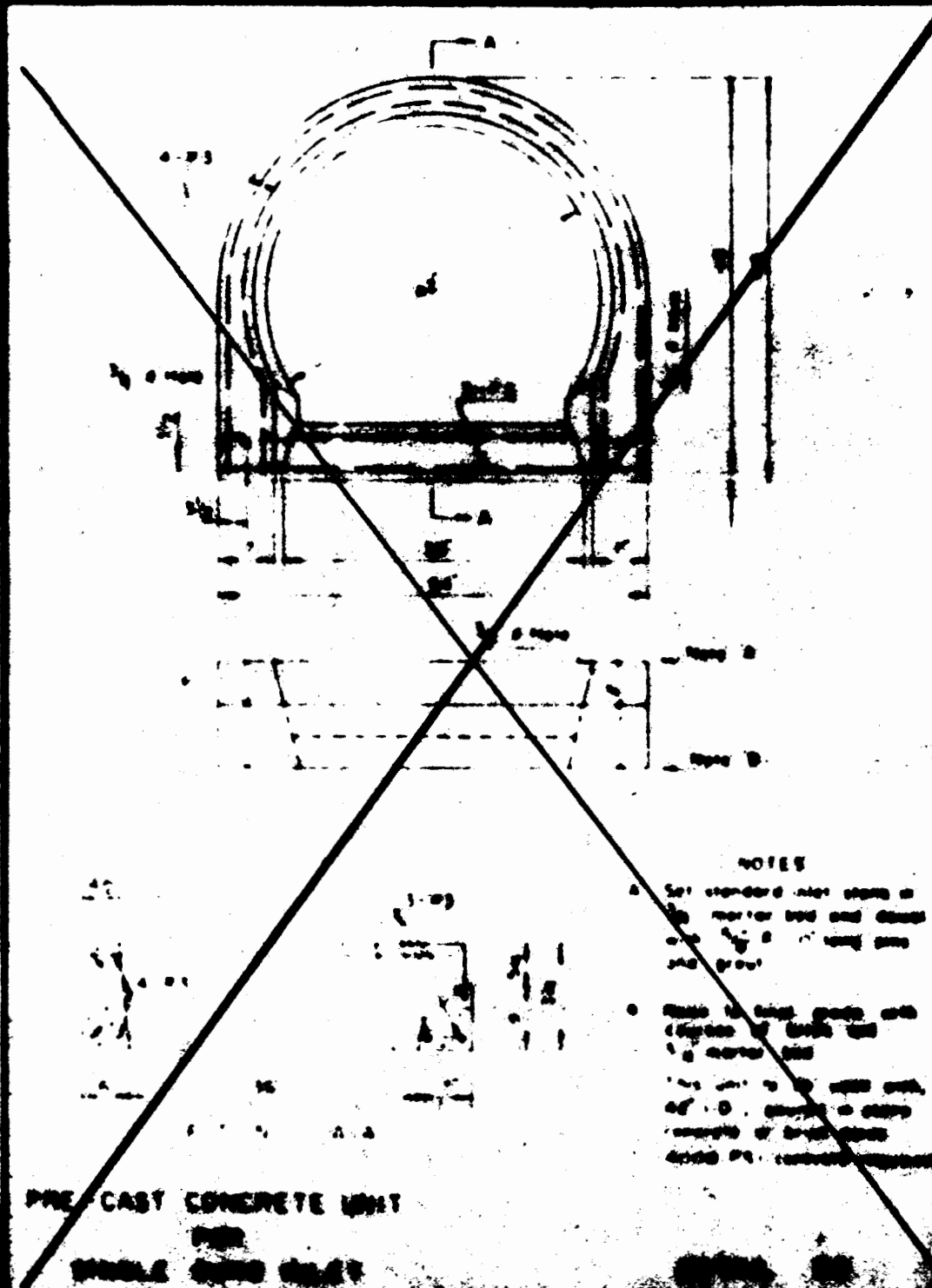
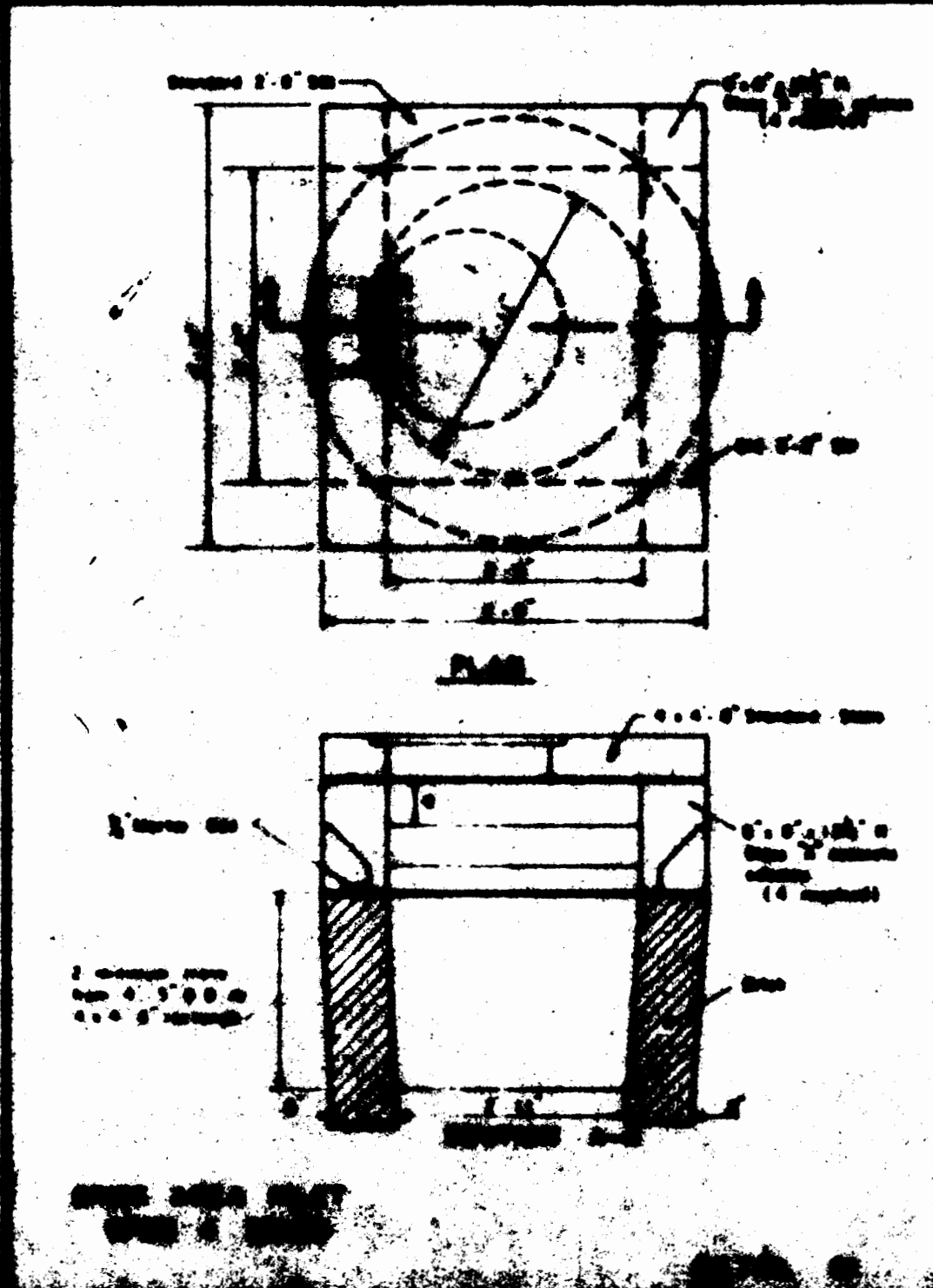


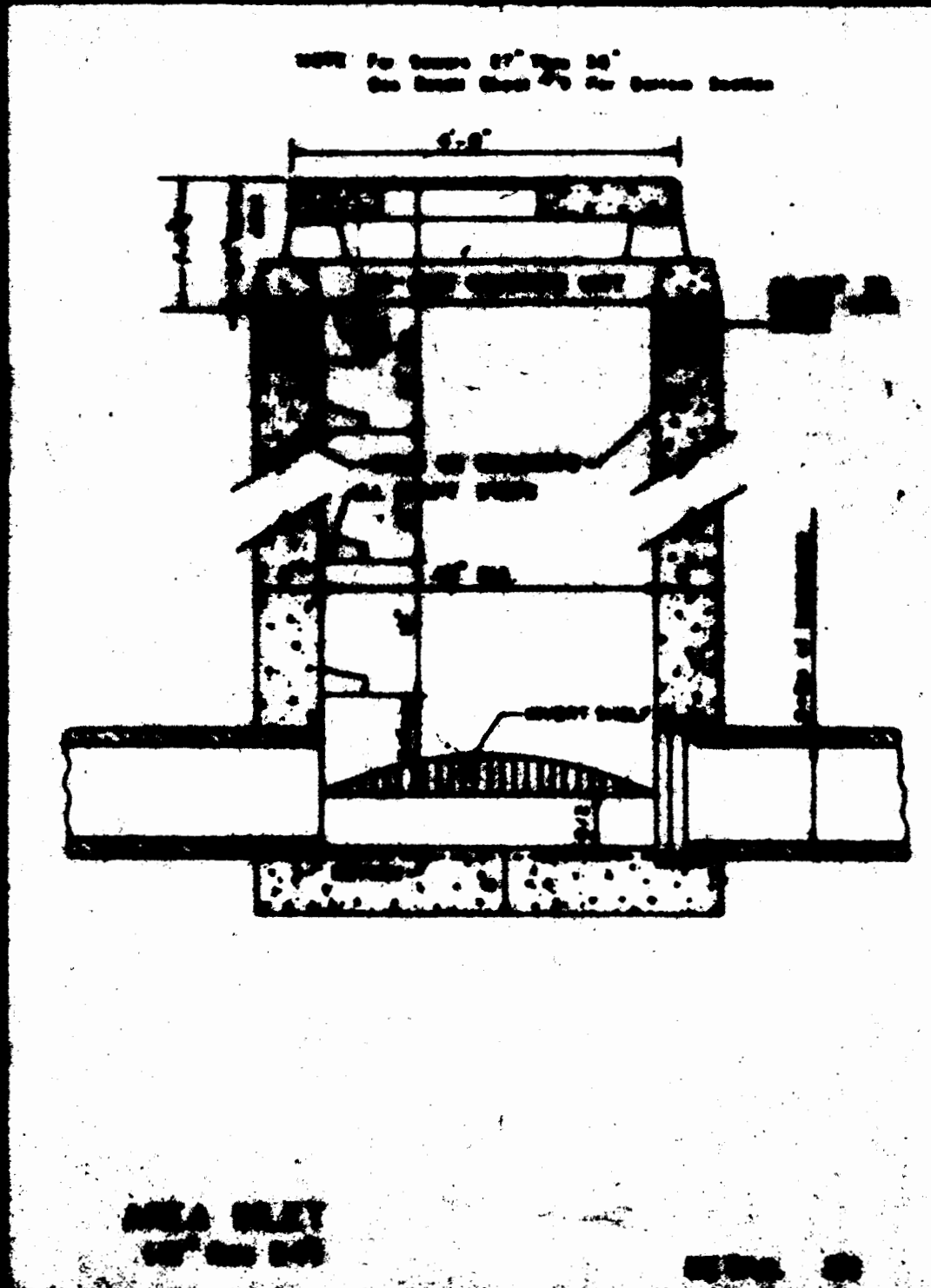
WRAPPED STREET INLET  
SEE CONSTRUCTION  
DETAIL 10



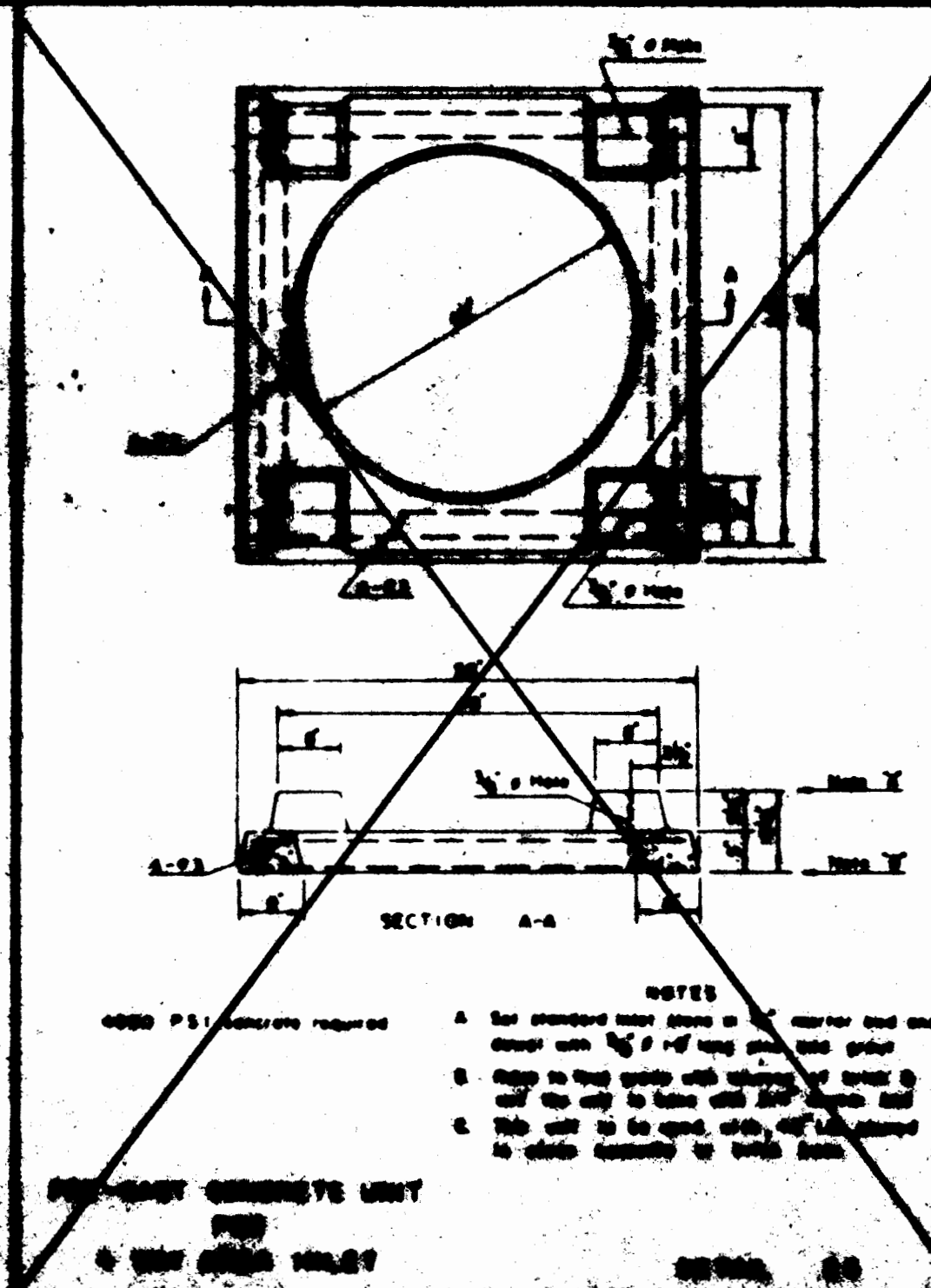
PRE-CAST CONCRETE UNIT  
FOR  
DOUBLE CURB INLET  
DETAIL 11



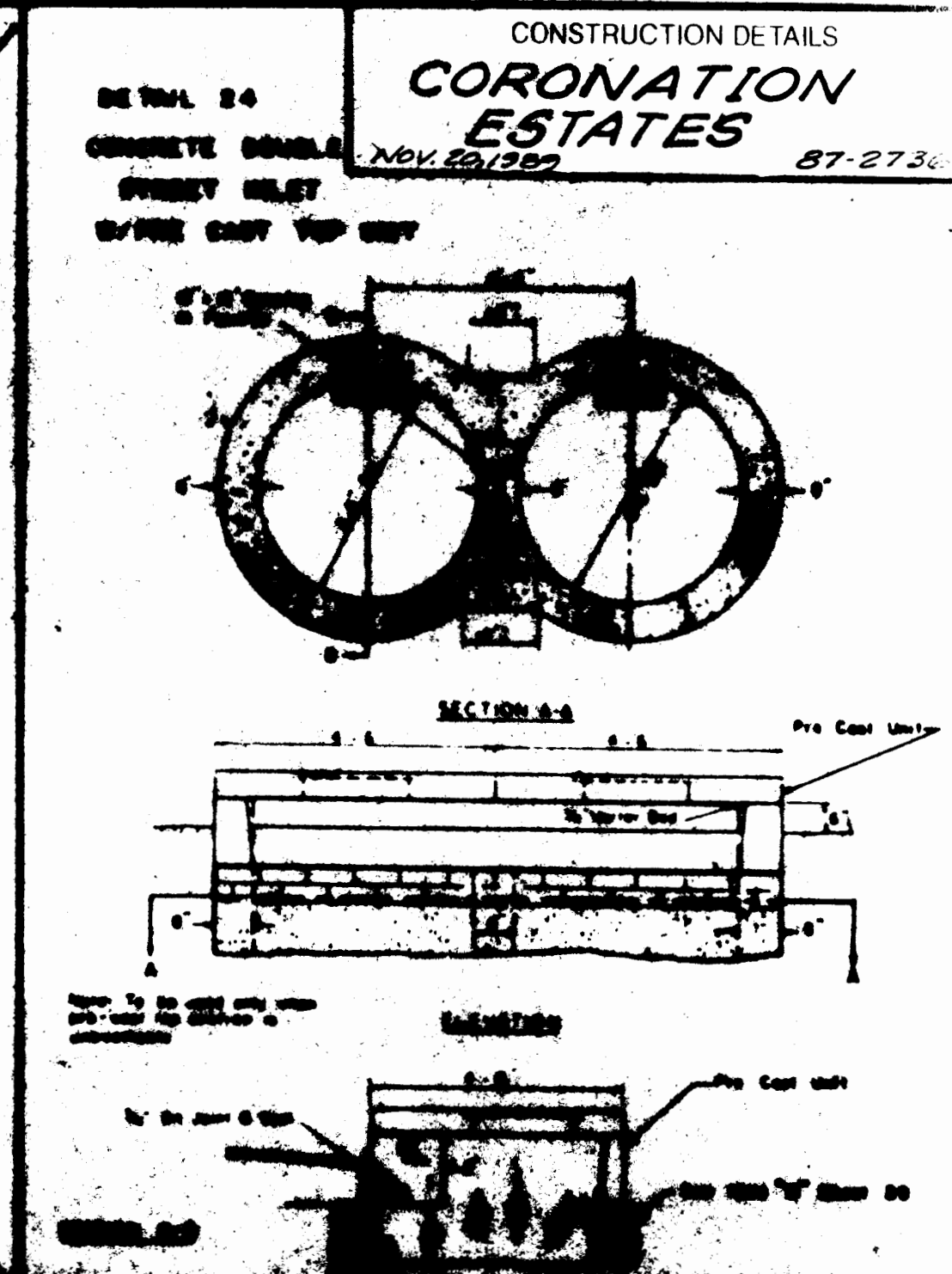
PRE-CAST CONCRETE UNIT  
FOR  
2' INLET  
DETAIL 12



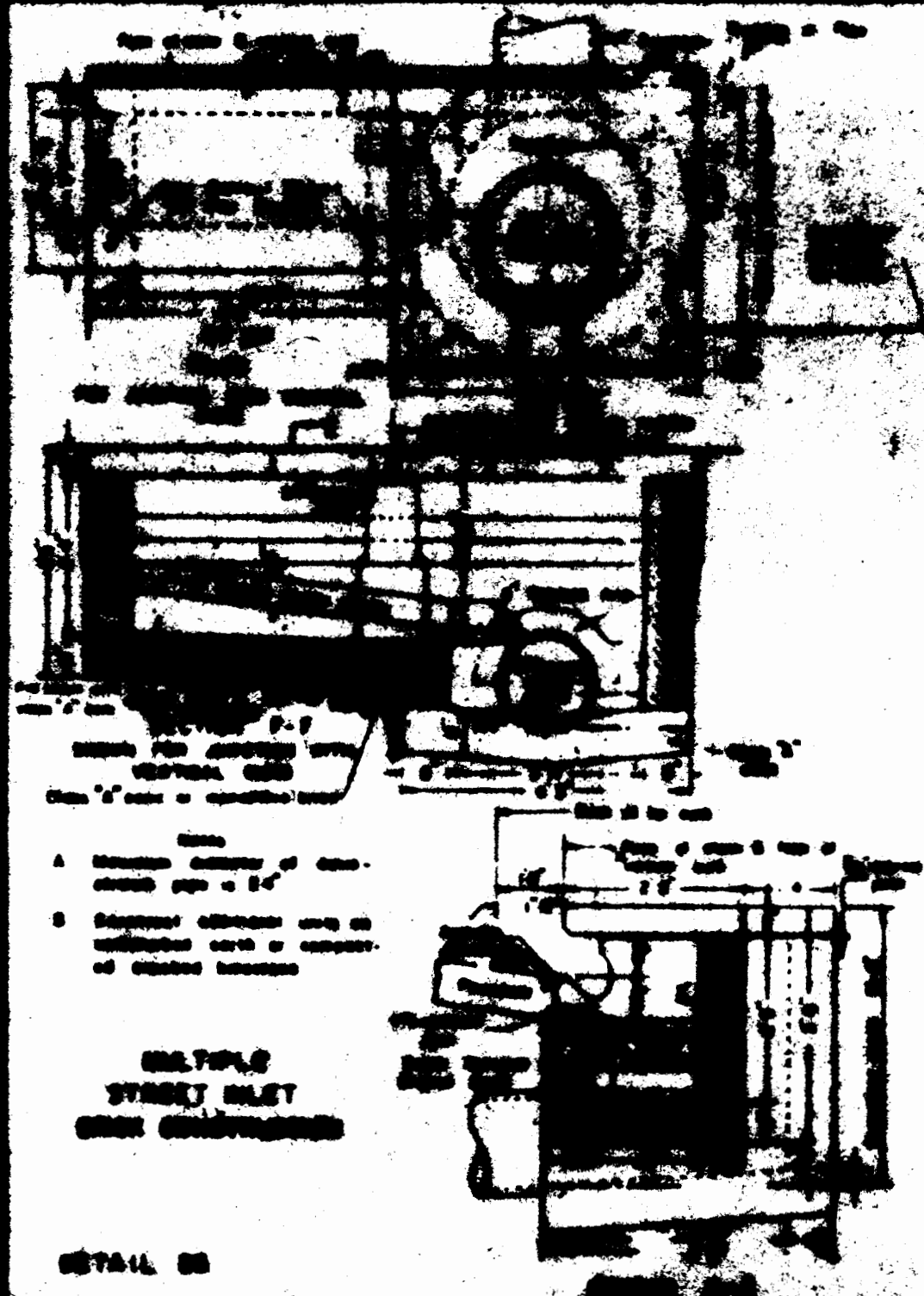
PRE-CAST CONCRETE UNIT  
FOR  
3' INLET  
DETAIL 13



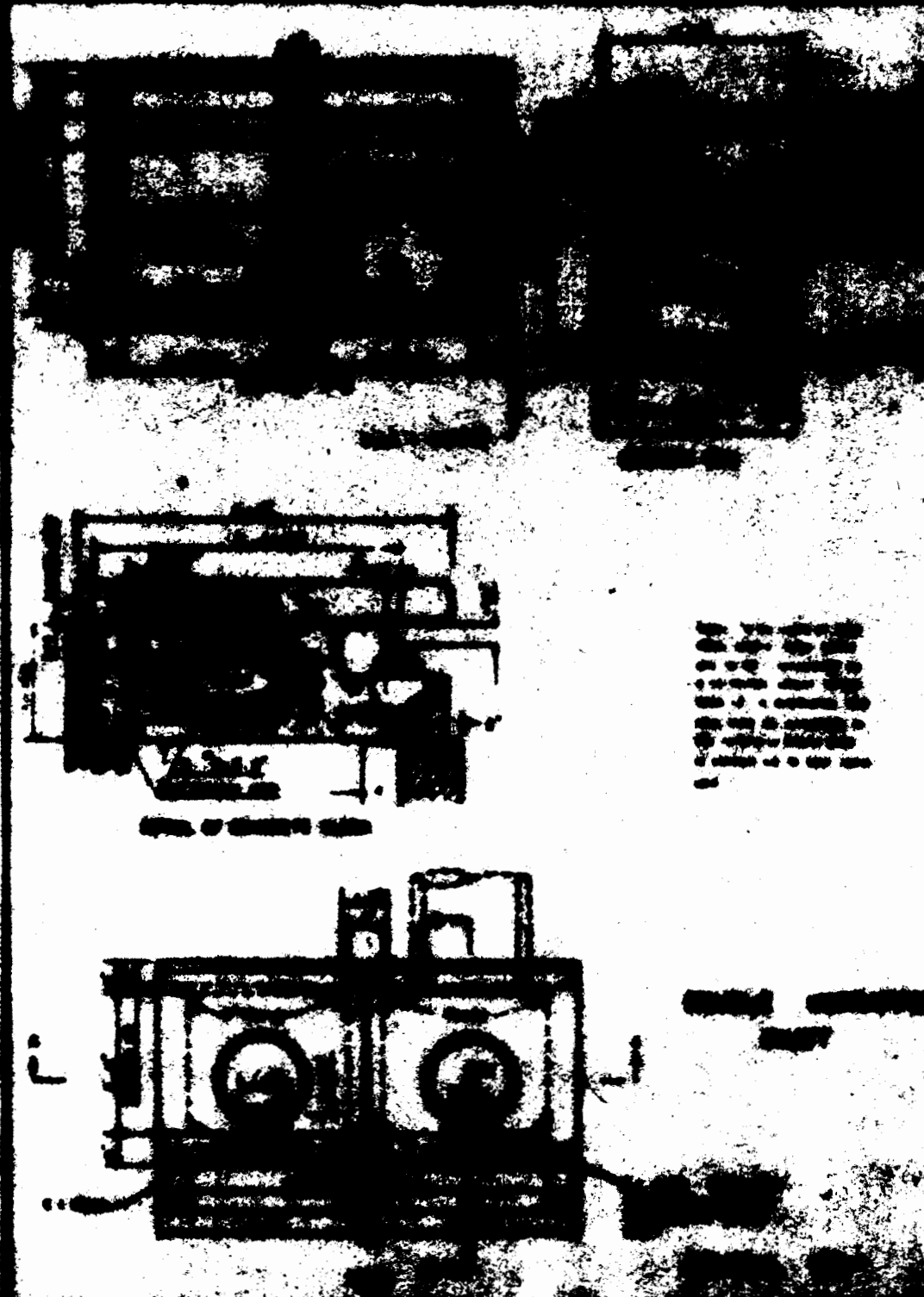
PRE-CAST CONCRETE UNIT  
FOR  
4' INLET  
DETAIL 14



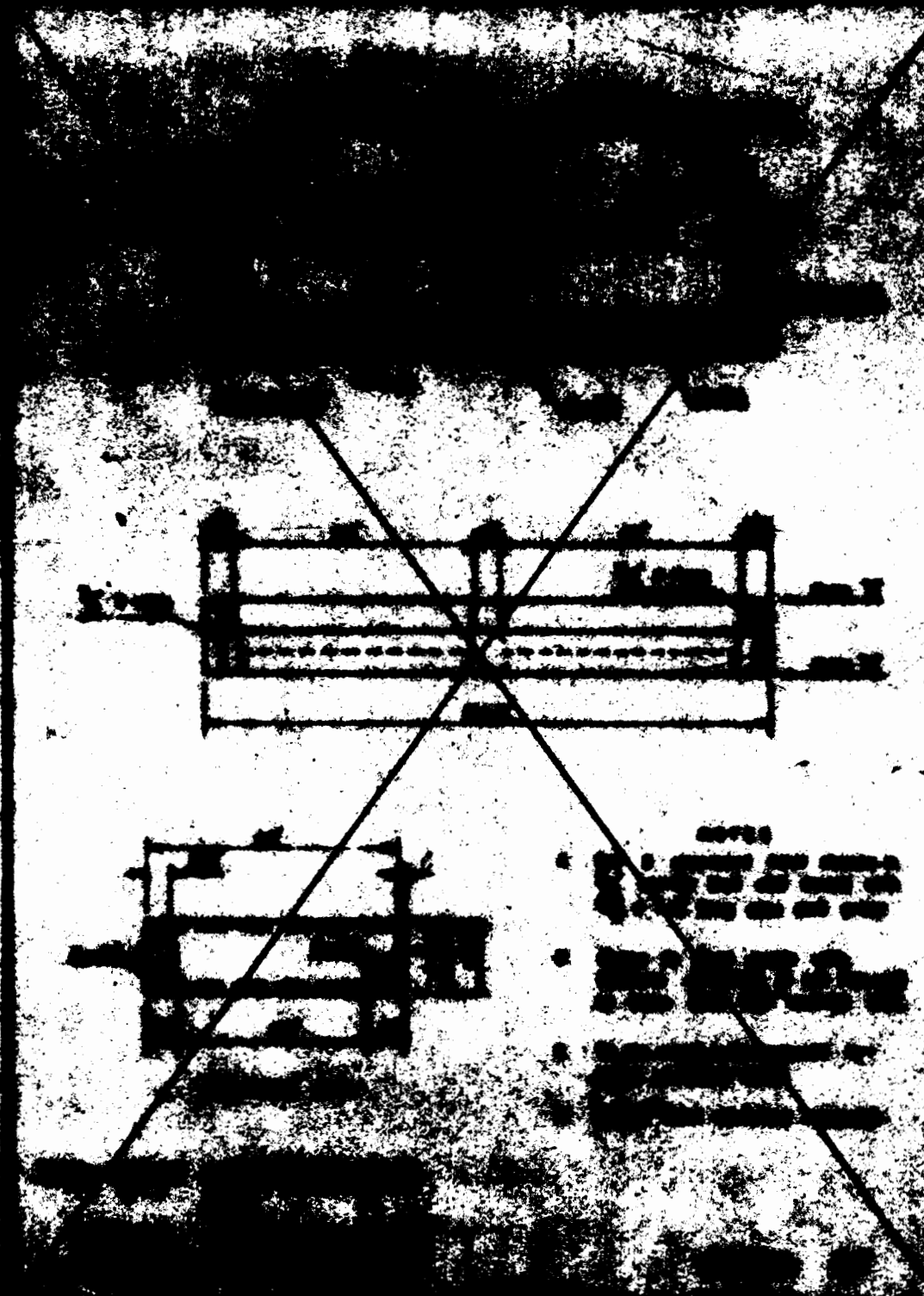
CONCRETE CURB  
FOR  
STREET INLET  
DETAIL 15



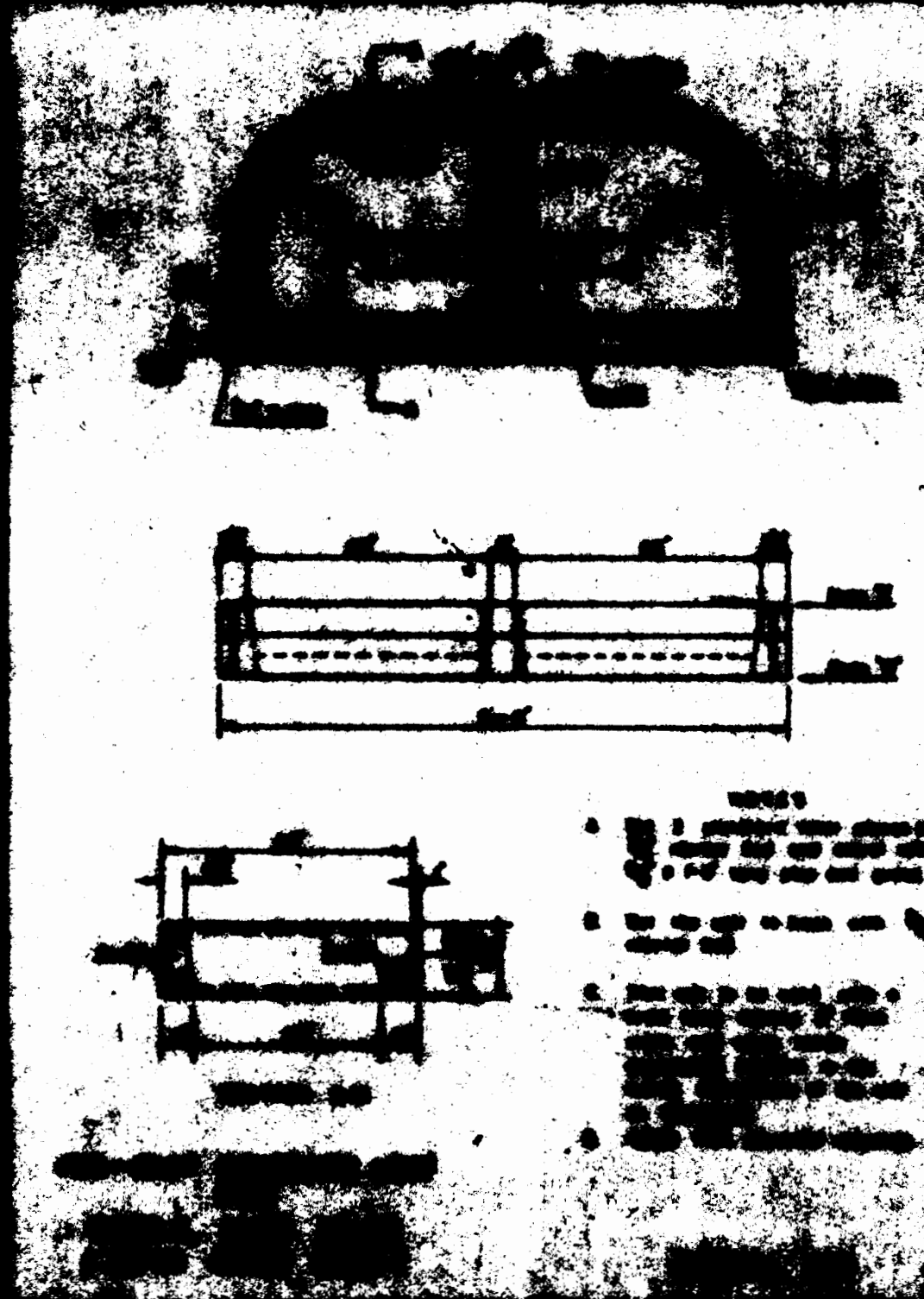
MULTIPLE  
STREET INLET  
SEE CONSTRUCTION  
DETAIL 16



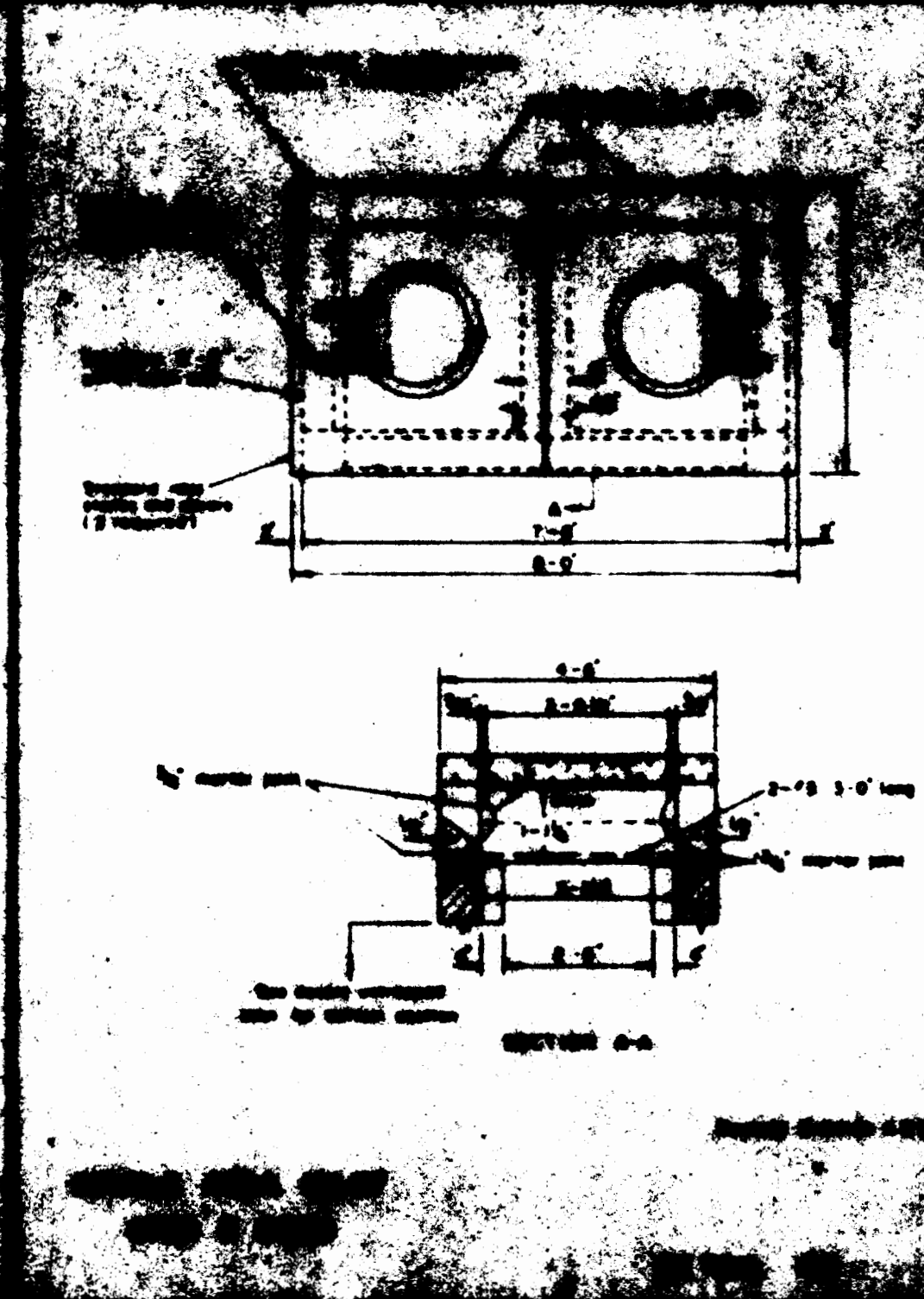
PRE-CAST CONCRETE UNIT  
FOR  
2' INLET  
DETAIL 17



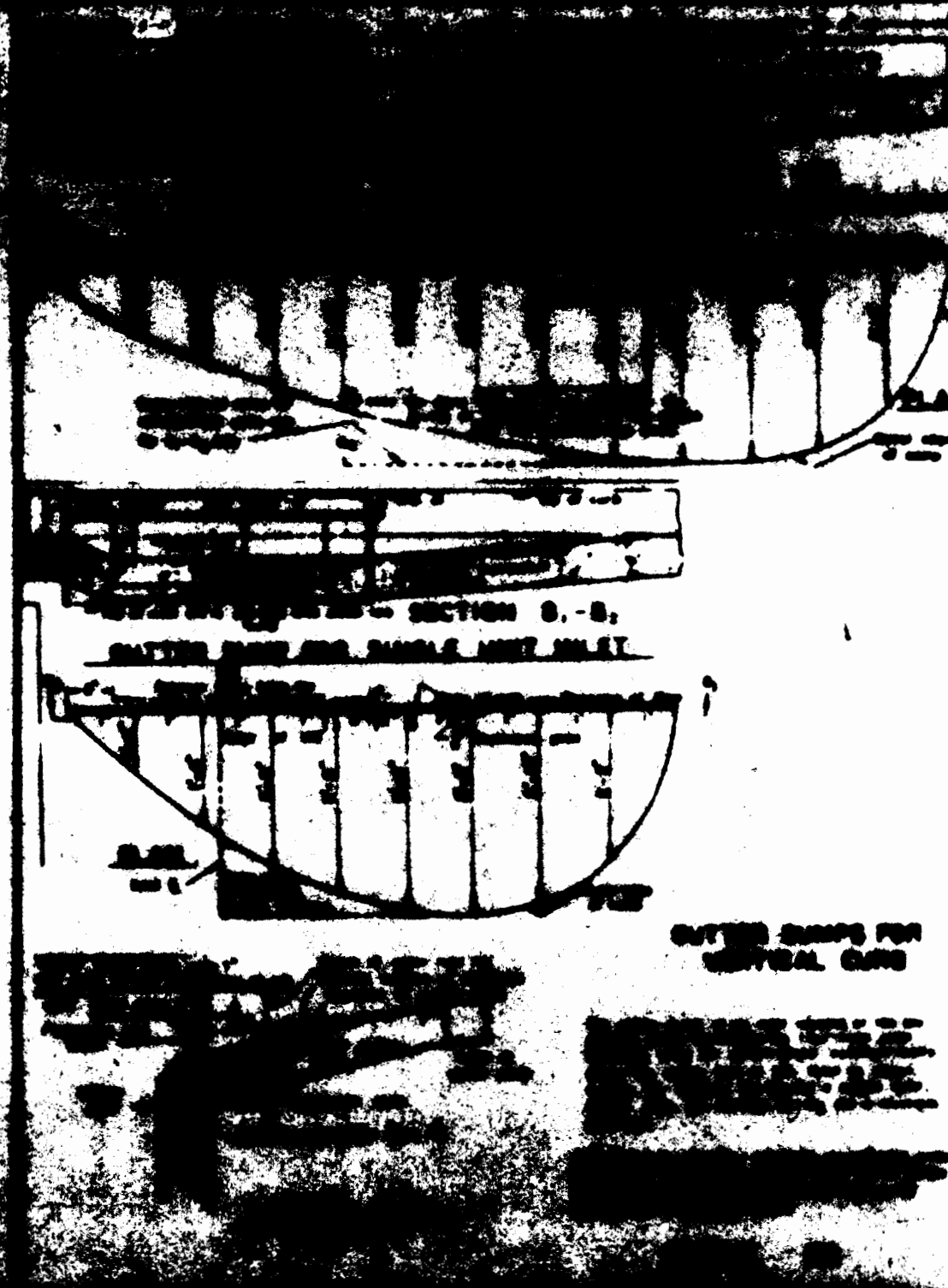
PRE-CAST CONCRETE UNIT  
FOR  
3' INLET  
DETAIL 18



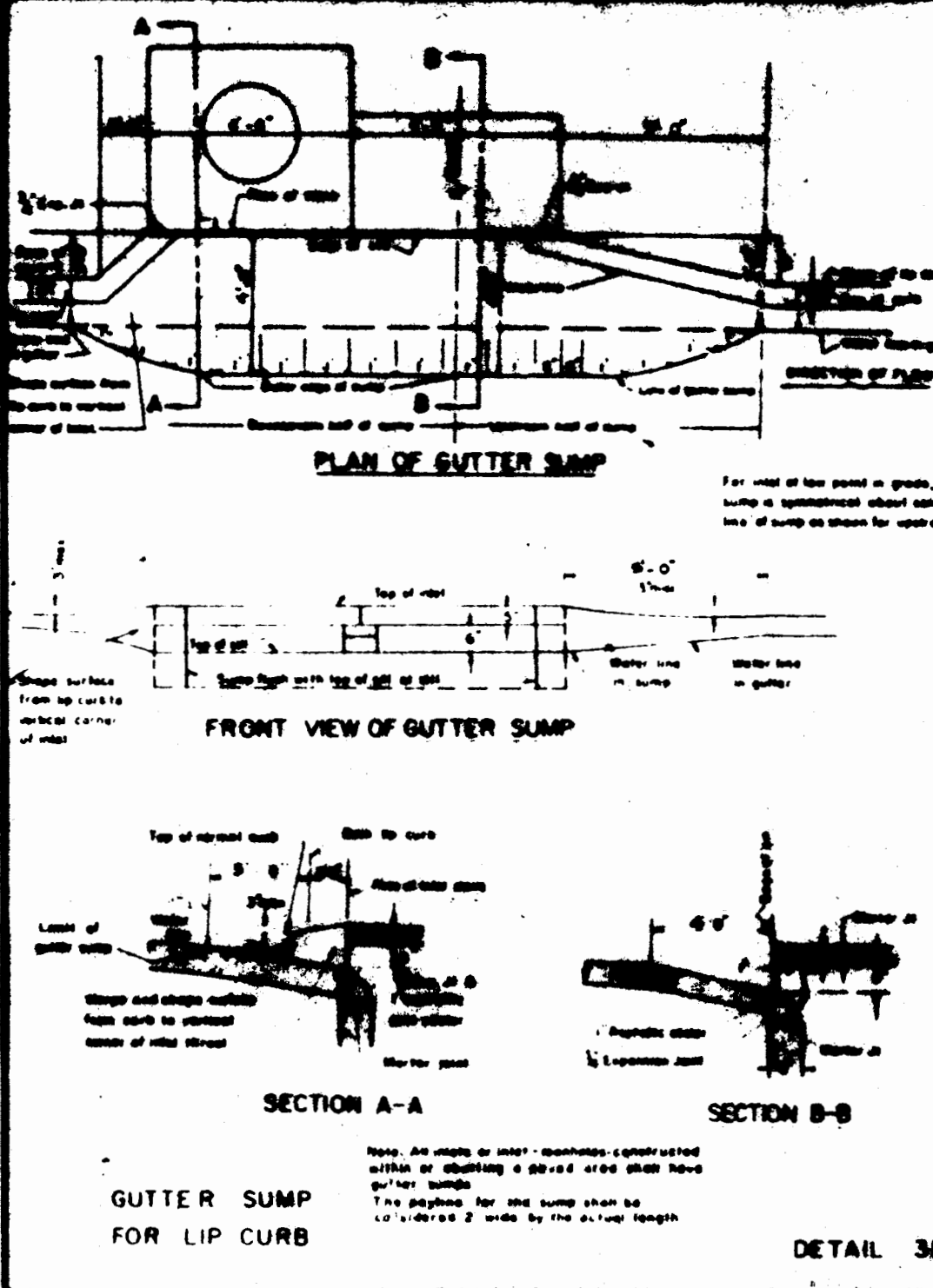
PRE-CAST CONCRETE UNIT  
FOR  
4' INLET  
DETAIL 19



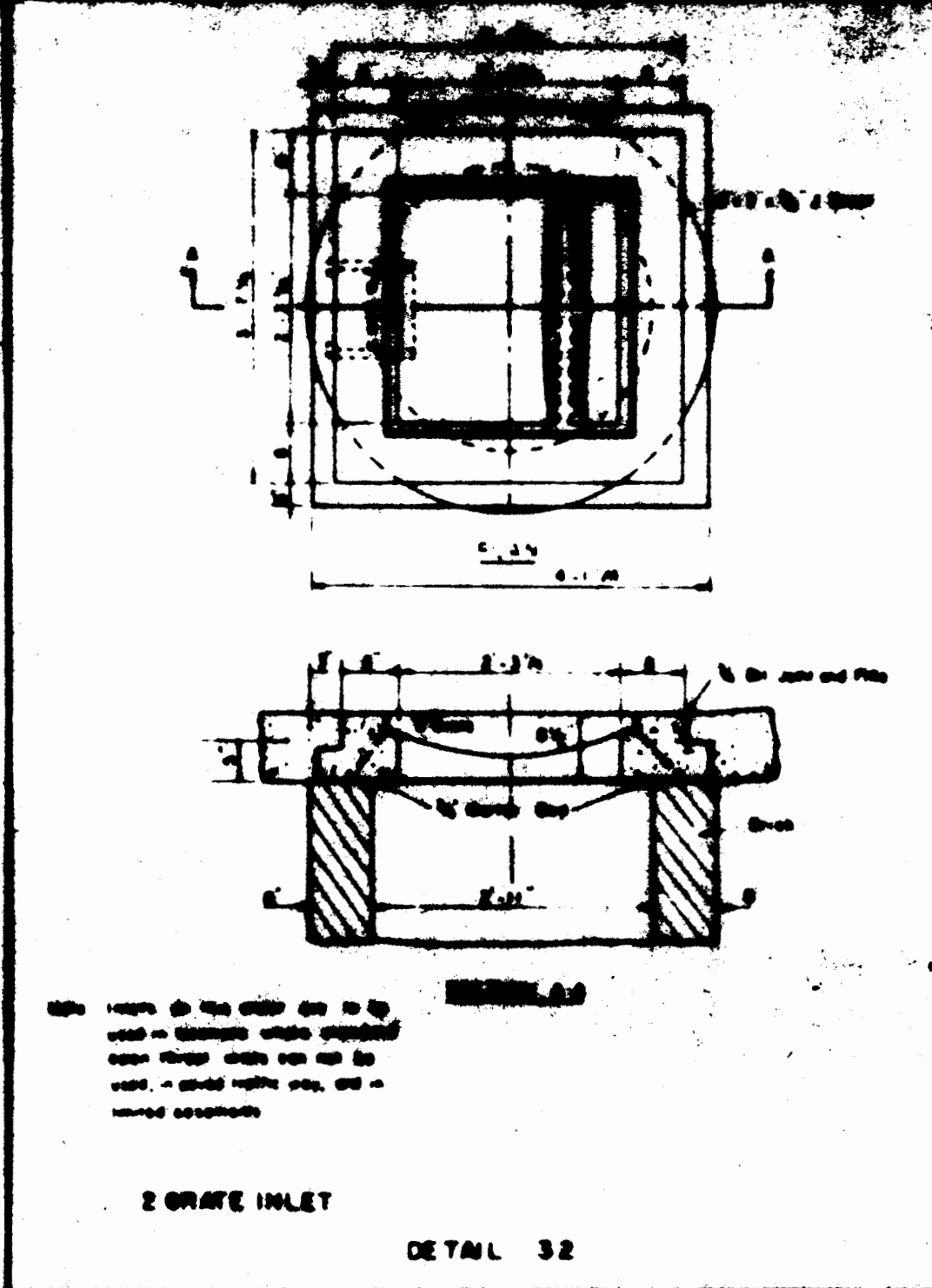
PRE-CAST CONCRETE UNIT  
FOR  
5' INLET  
DETAIL 20



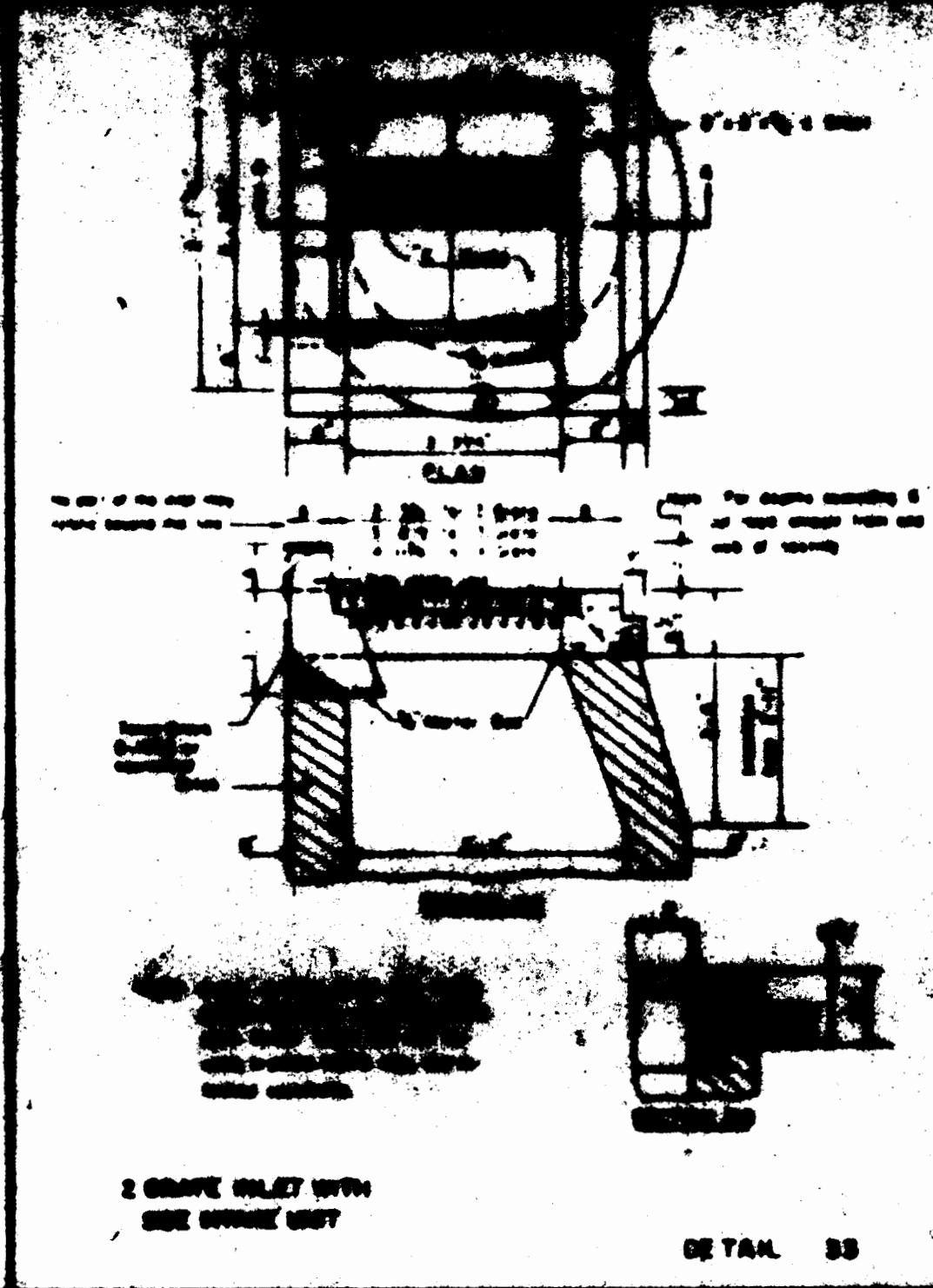
GUTTER SUMP FOR  
VERTICAL CURB  
DETAIL 21



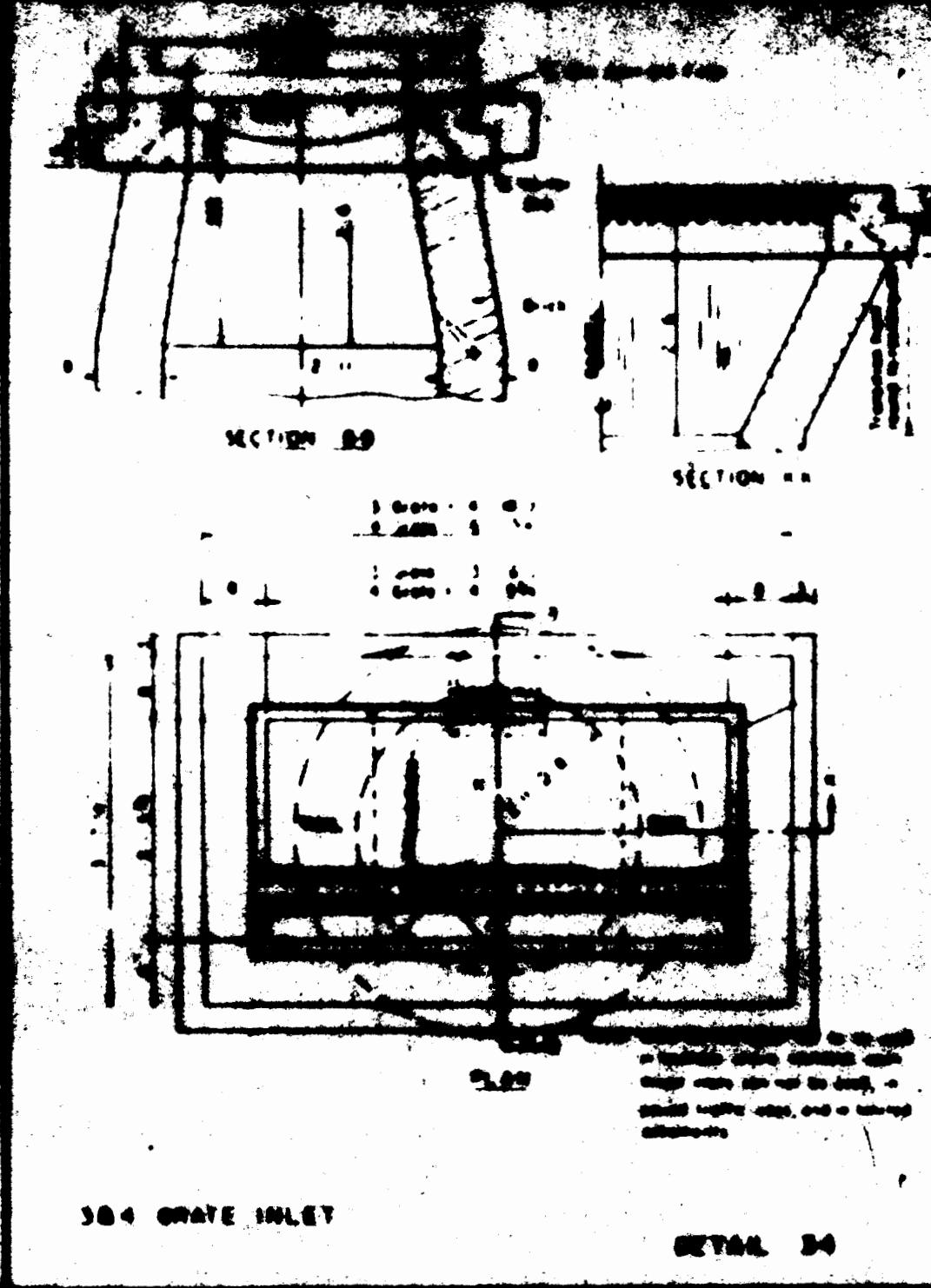
GUTTER SUMP  
FOR LIP CURB  
DETAIL 22



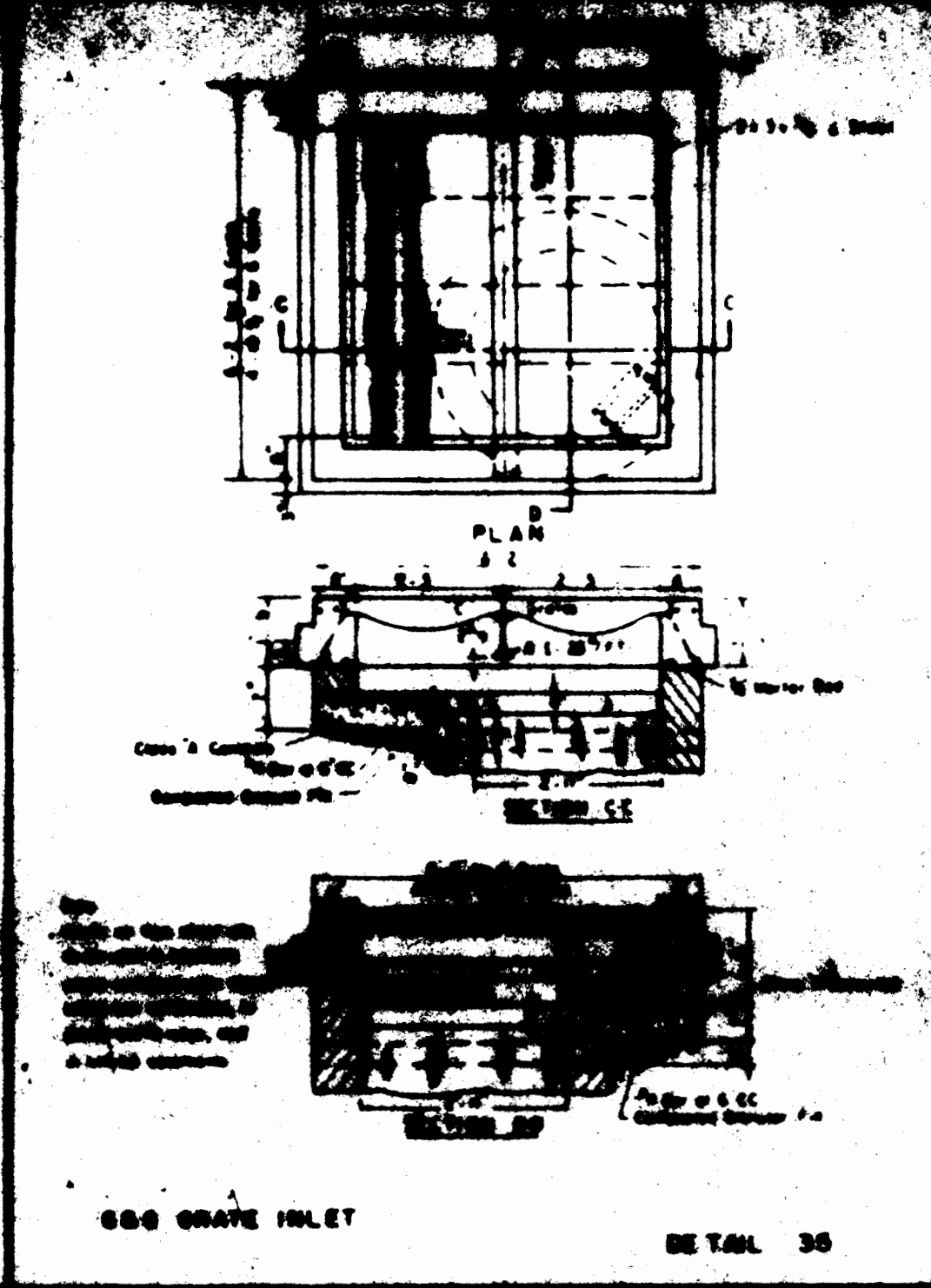
2' GRATE INLET  
DETAIL 23



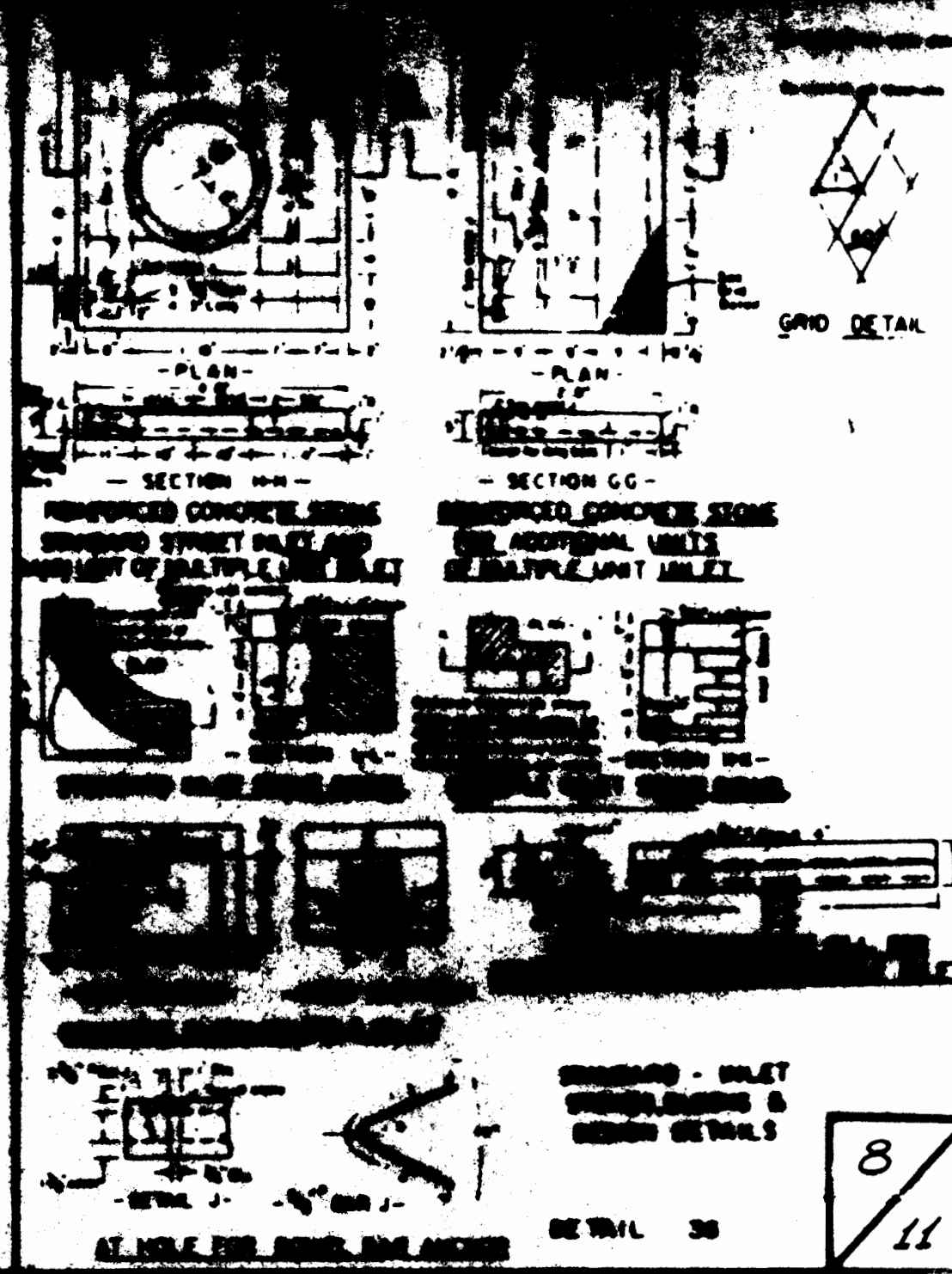
2' GRATE INLET WITH  
PRE-CAST CONCRETE UNIT  
DETAIL 24



3' GRATE INLET  
DETAIL 25



4' GRATE INLET  
DETAIL 26



5' GRATE INLET  
DETAIL 27