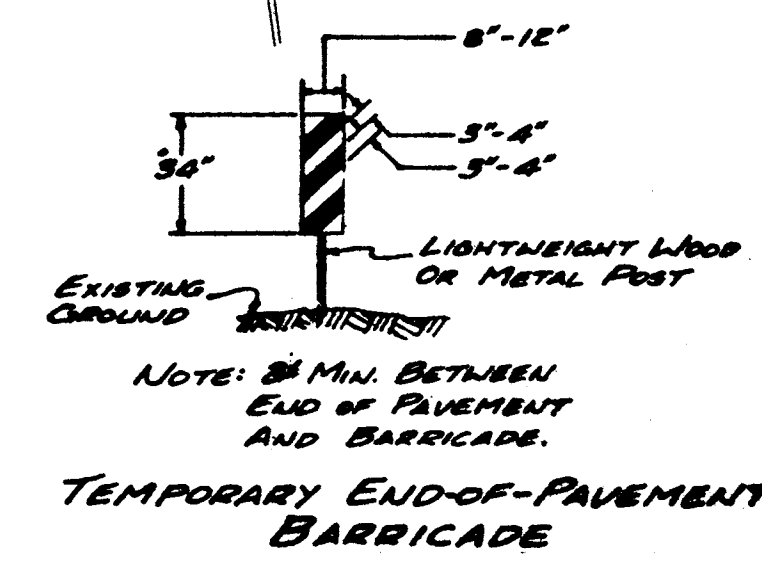
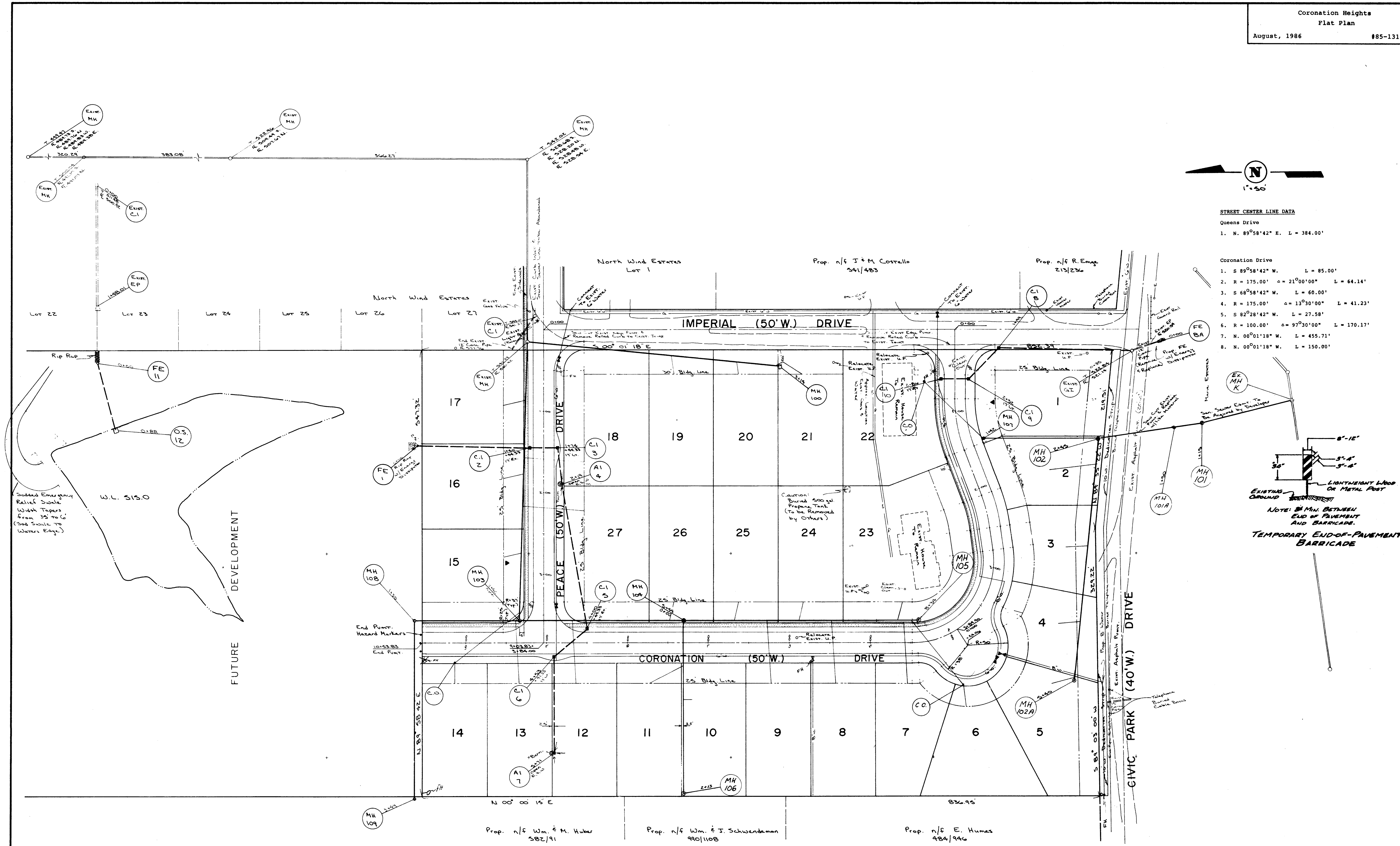




STREET CENTER LINE DATA

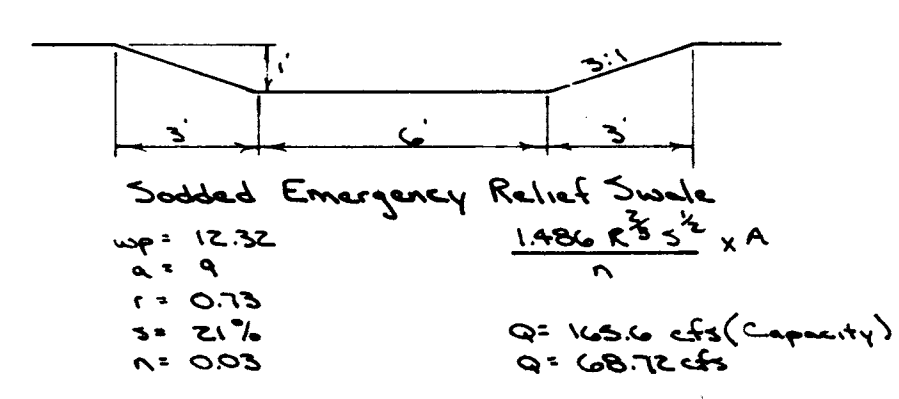
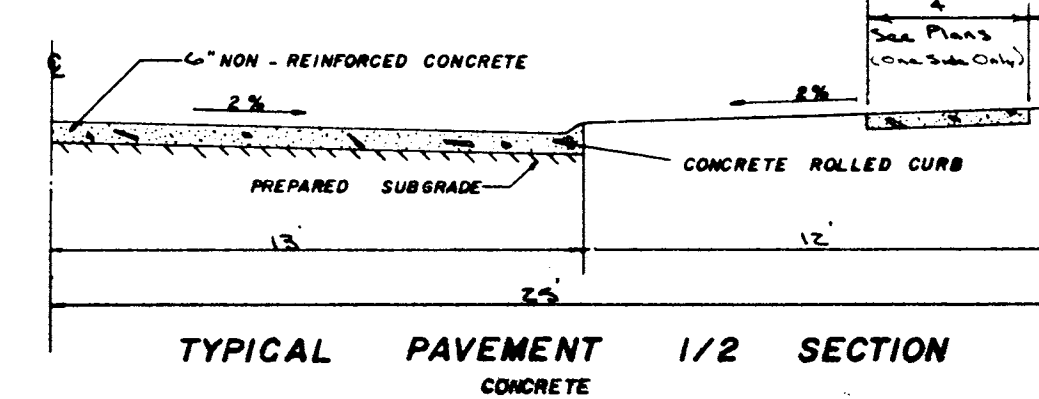
- Queens Drive
1. N. 89°58'42" E. L = 384.00'
- Coronation Drive
1. S 89°58'42" W. L = 85.00'
2. R = 175.00' $\alpha = 21^{\circ}00'00''$ L = 64.14'
3. S 68°58'42" W. L = 60.00'
4. R = 175.00' $\alpha = 13^{\circ}30'00''$ L = 41.23'
5. S 82°28'42" W. L = 27.58'
6. R = 100.00' $\alpha = 97^{\circ}30'00''$ L = 170.17'
7. N. 00°01'18" W. L = 455.71'
8. N. 00°01'18" W. L = 150.00'



Sodded Emergency Relief Scales
Width Tapers from 25 to 6 (See Scale to Water's Edge)

W.L. 515.0

FUTURE DEVELOPMENT



NOTE:
 Underground utilities and structures have been plotted from available information and therefore, their location must be considered approximate only. It is the responsibility of the individual contractors to notify the utility companies before actual construction.

Note:
 Civic Park Drive & Imperial Drive To Remain Open to Traffic At All Times.