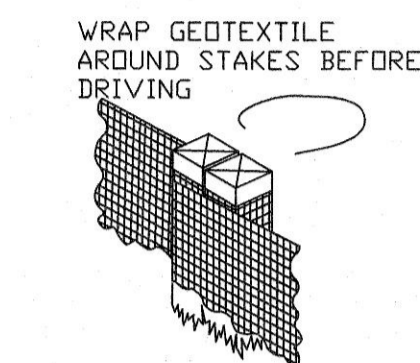
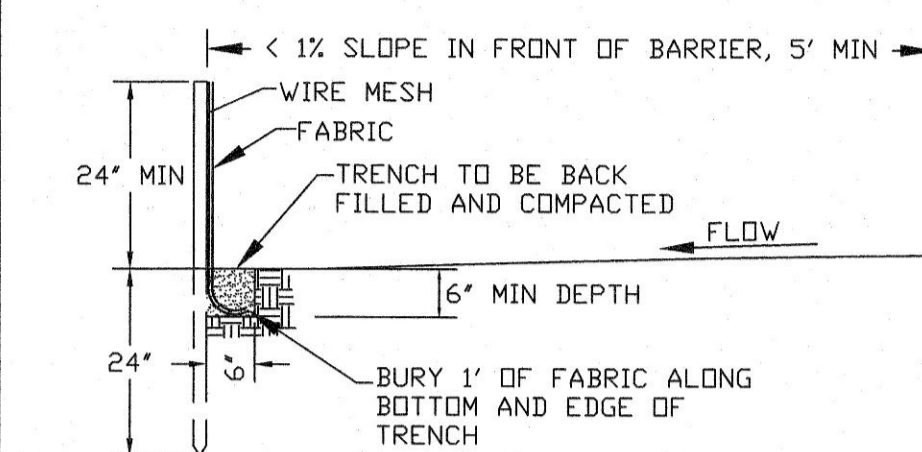
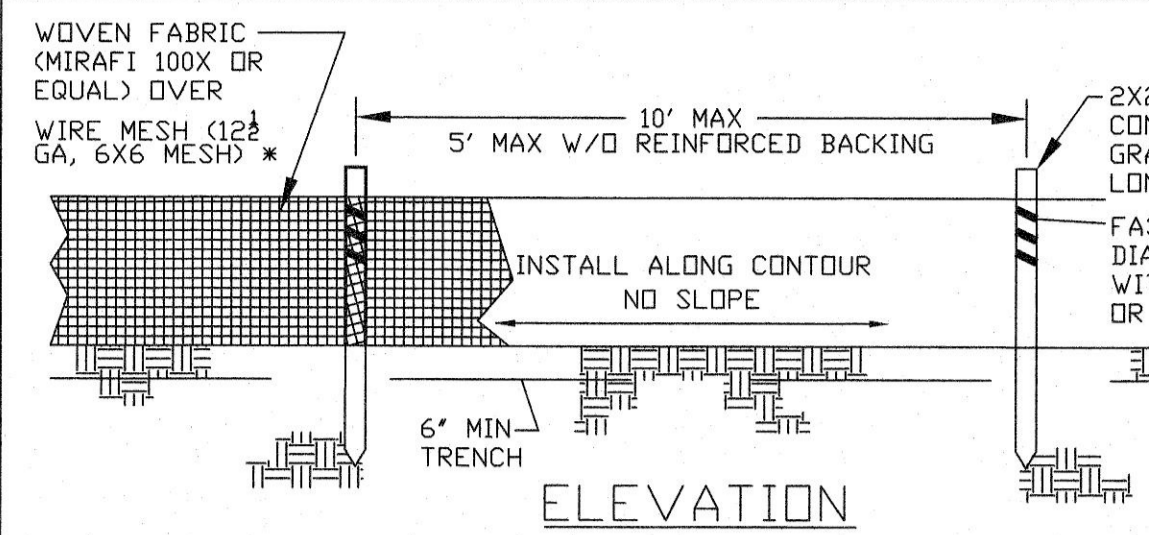


- DESIGN CRITERIA**
- SILT FENCE FOR SHEET FLOW SHALL HAVE A MAXIMUM DRAINAGE AREA OF 1/4 ACRE PER 100 LF.
 - STRAW BALE BARRIERS FOR SHEET FLOW SHALL HAVE A MAXIMUM DRAINAGE AREA OF 1/4 ACRE PER 100 LF.
 - REFER TO INDIVIDUAL ESC FIGURE FOR INSTALLATION.
 - TERRACING INCLUDES LOGS, WATTLES & FILTER SOCKS.

CITY OF O'FALLON
ENGINEERING DEPARTMENT
O'FALLON, MISSOURI

SPACING CHART FOR ESC DEVICES



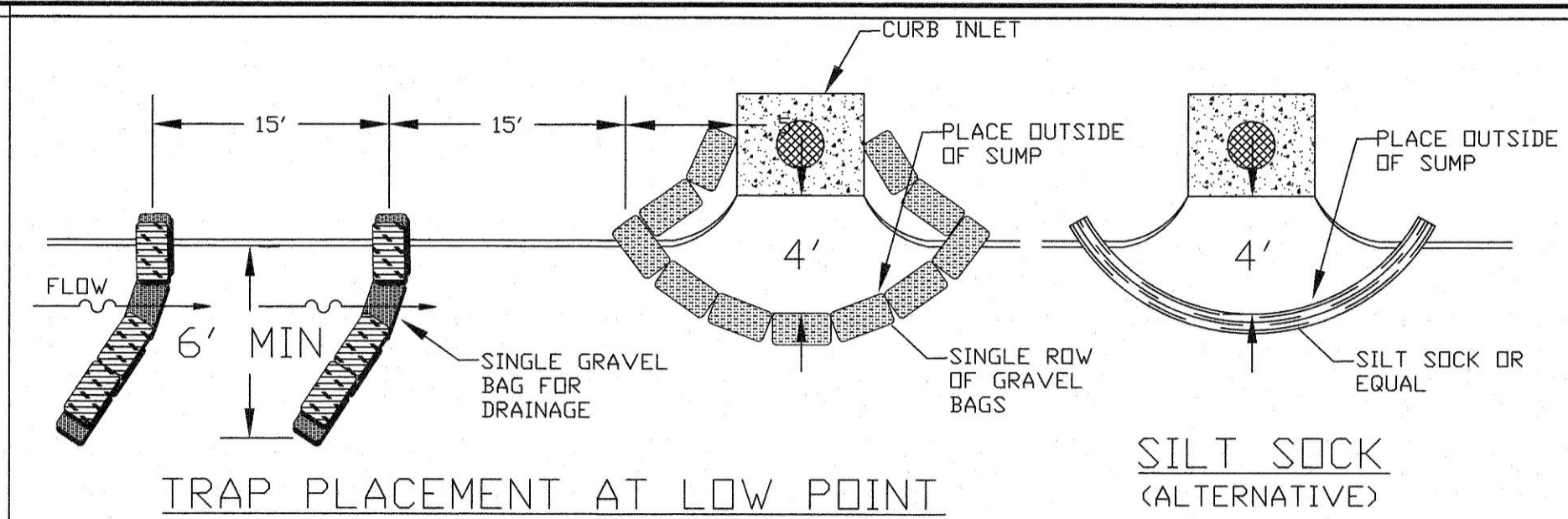
NOTE: IF FABRIC IS INSTALLED BY EQUIPMENT DESIGNED TO SLICE INTO THE GROUND, THE TRENCH IS NOT REQ'D.

JOINING SECTIONS OF SILT FENCE

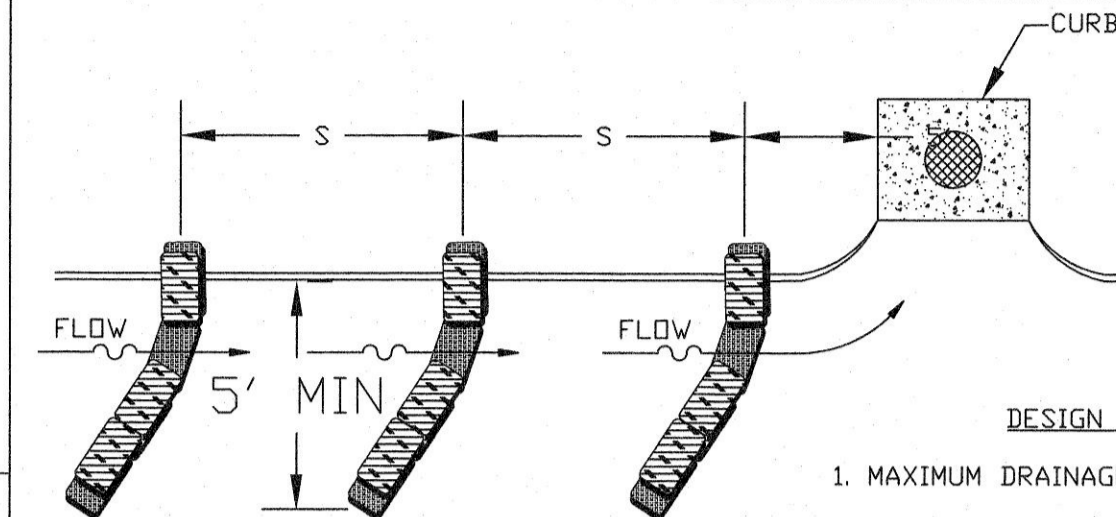
- CRITERIA**
- SILT FENCE SHALL BE 24 INCHES HIGH.
 - SILT FENCE SHALL NOT BE USED FOR CONCENTRATED FLOWS.
 - GEOSYNTHETIC REINFORCED SILT FENCE BACKING MAY BE USED IN LIEU OF WIRE MESH.
 - WIRE MESH WILL BE USED AT LOCATIONS SHOWN ON THE APPROVED SWPPP.

CITY OF O'FALLON
ENGINEERING DEPARTMENT
O'FALLON, MISSOURI

SILT FENCE INSTALLATION SHEET FLOW (ONLY)



TRAP PLACEMENT AT LOW POINT

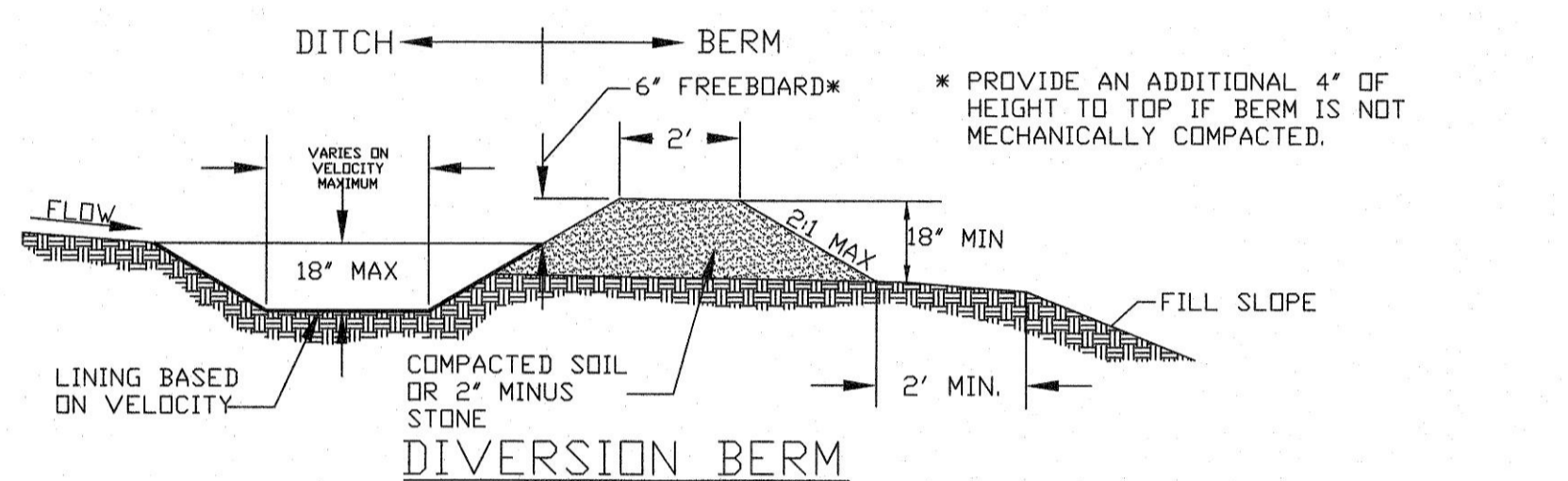


TRAP PLACEMENT AT INTERMEDIATE INLET

- DESIGN CRITERIA**
- MAXIMUM DRAINAGE AREA - 1 ACRE.
 - PEAK RUNOFF SHALL BE ≤ 2 CFS BASED ON THE 6-MONTH STORM.
 - STACK GRAVEL BAGS DOUBLE HIGH. PROVIDE GAP FOR DRAINAGE.

CITY OF O'FALLON
ENGINEERING DEPARTMENT
O'FALLON, MISSOURI

CURB INLET PROTECTION

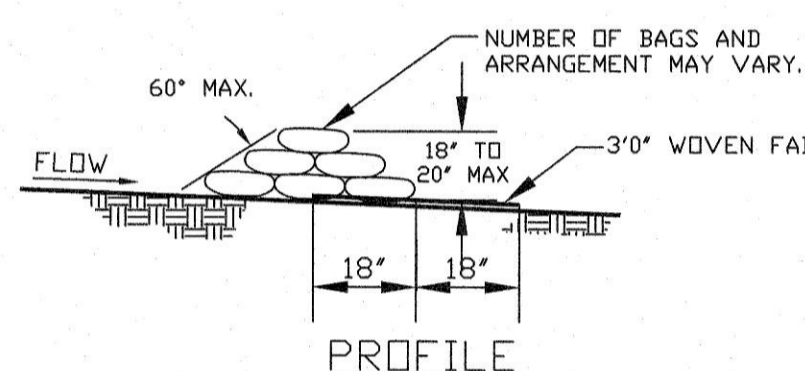
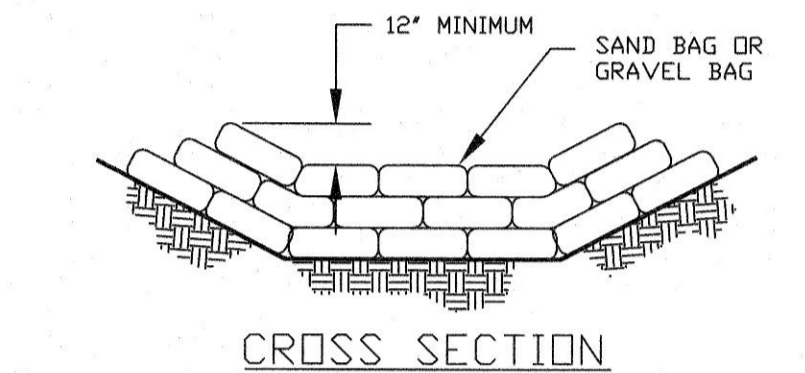


DESIGN CRITERIA

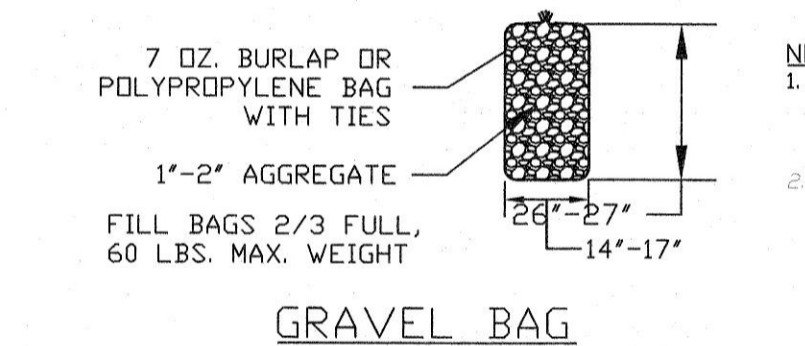
- DIVERSIONS SHALL BE USED FOR DRAINAGE AREAS ≤ 3 ACRES.
- DIVERSION CHANNELS SHALL BE DESIGNED TO CONVEY THE 6-MO STORM AT NON-EROSIVE VELOCITIES.
- CRITICAL LOCATIONS SHALL BE DESIGNED FOR THE 15YR / 20MIN. STORM.
- MAXIMUM CHANNEL SLOPE OF 3% WITHOUT CHECK DAMS.
- SWALE SEDIMENT TRAPS ARE TO BE USED IN HIGHLY ERODIVE AREAS.
- CHANNELS SHALL BE PROTECTED USING APPROPRIATE CHANNEL LINERS.
- CHANNEL OUTLETS MUST BE STABILIZED.
- STORM SEWERS MAY BE USED IN LIEU OF OPEN CHANNELS.

CITY OF O'FALLON
ENGINEERING DEPARTMENT
O'FALLON, MISSOURI

DIVERSION BERMS + DIKES



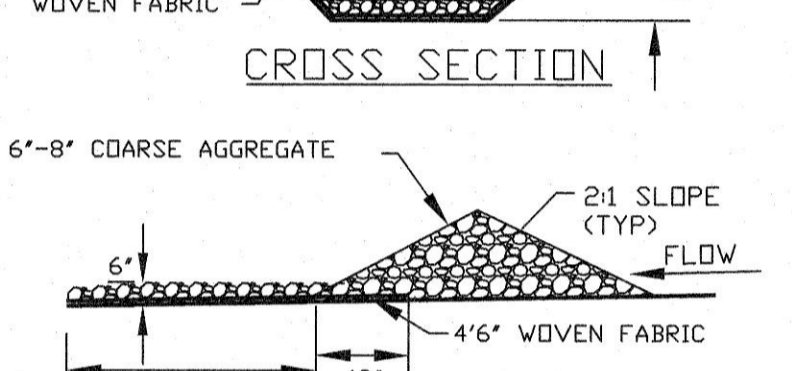
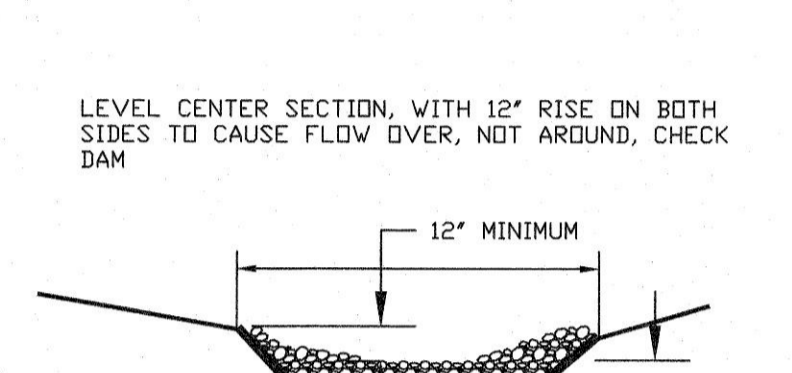
SAND BAG OR GRAVEL BAG CHECK DAM



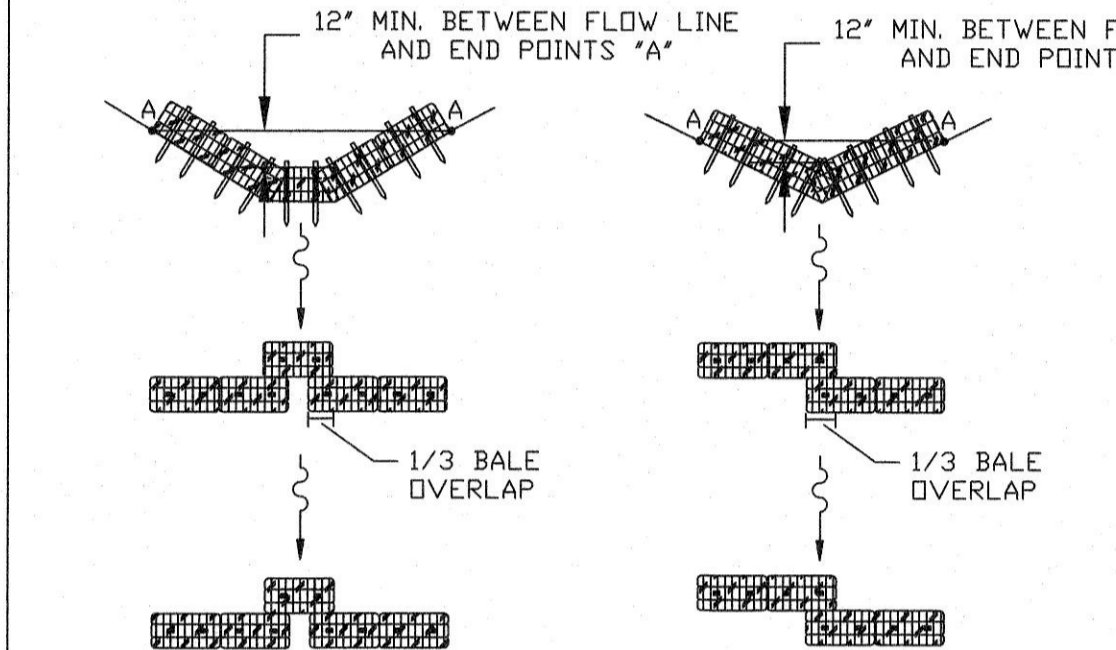
- NOTE:**
- CHECK DAMS MAY BE CONSTRUCTED OF SEVERAL ESC CHECK DAM PRODUCTS.
 - SEE TABLE 60-12 AND ESC 1 FOR CHECK DAM SPACING.

CITY OF O'FALLON
ENGINEERING DEPARTMENT
O'FALLON, MISSOURI

CHECK DAMS



PROFILE ROCK CHECK DAM



TRAPEZOIDAL DITCH V-DITCH

CRITERIA FOR LOW CONCENTRATED FLOWS

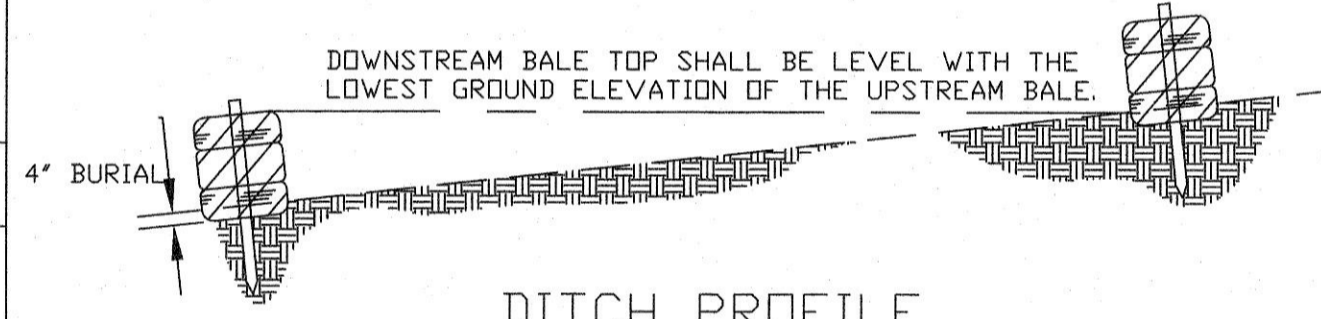
- DRAINAGE AREAS SHALL BE LESS THAN 1 ACRE.
- INSTALL TWO STAKES PER BALE.
- BALES WILL BE TRENCHED 4\"/>

CHECK DAM SPACING

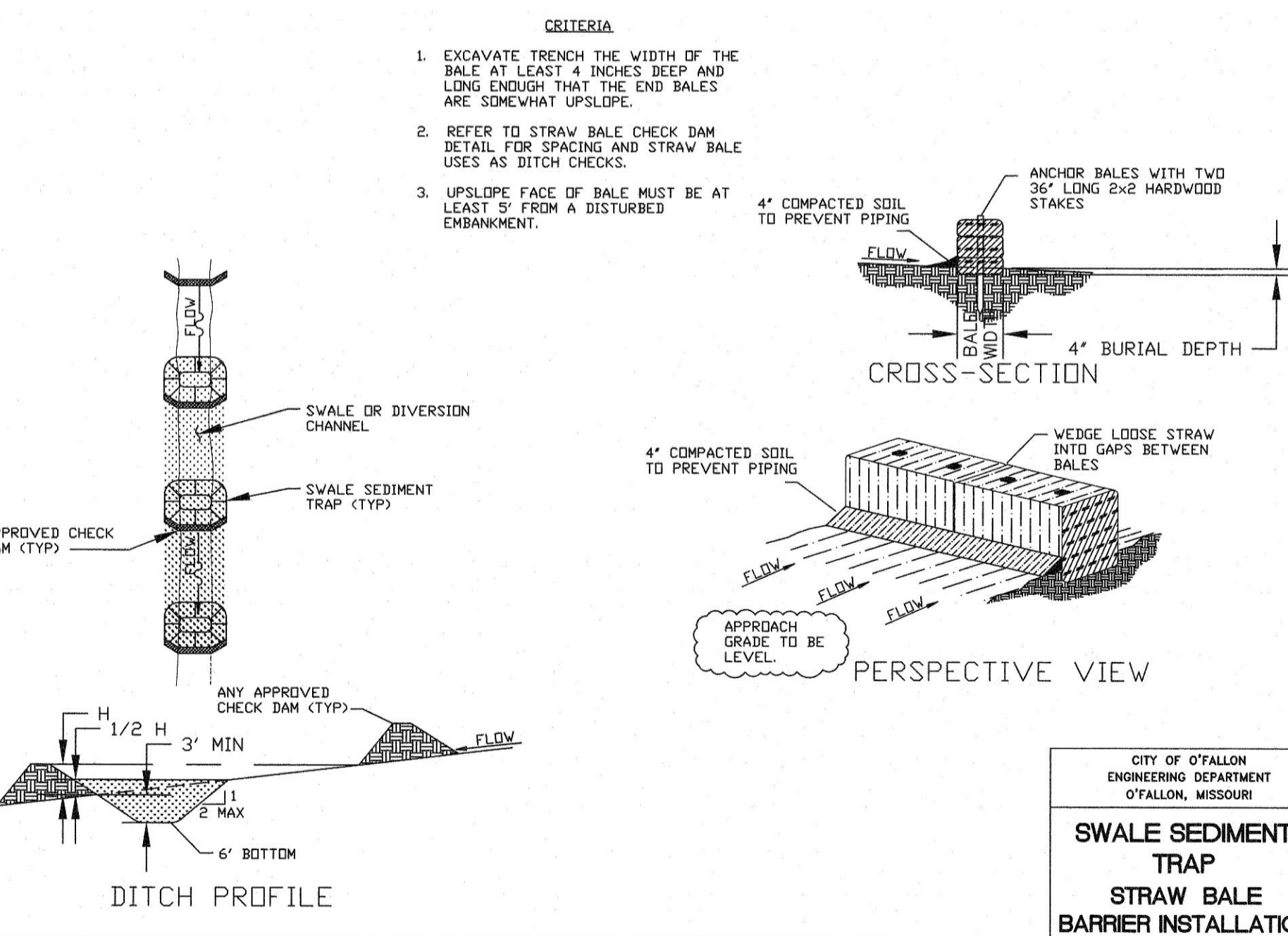
Ditch Slope	Maximum Spacing
3%	50'
2%	75'

CITY OF O'FALLON
ENGINEERING DEPARTMENT
O'FALLON, MISSOURI

STRAW BALE CHECK DAM

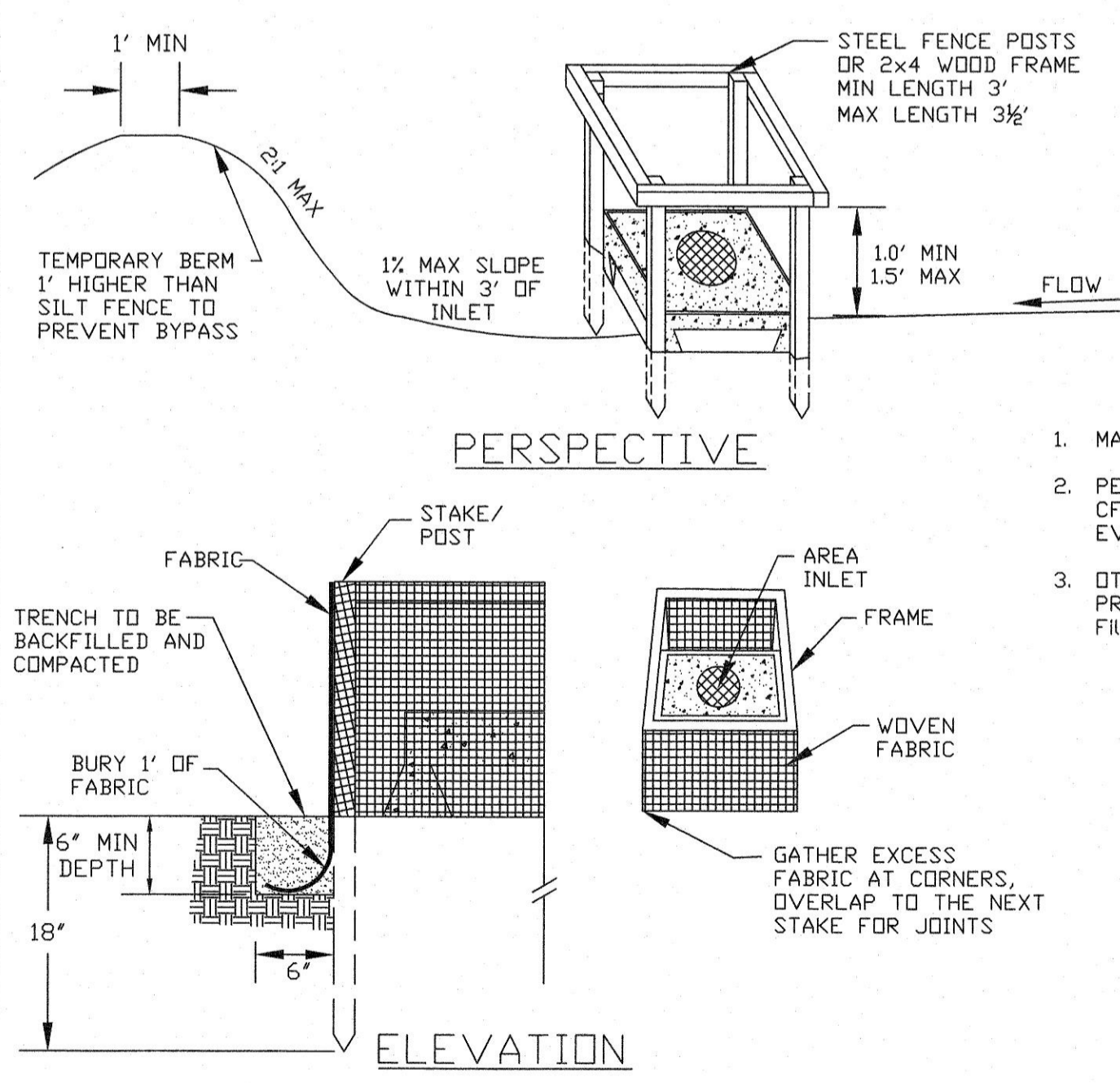


DITCH PROFILE



CITY OF O'FALLON
ENGINEERING DEPARTMENT
O'FALLON, MISSOURI

SWALE SEDIMENT TRAP STRAW BALE BARRIER INSTALLATION

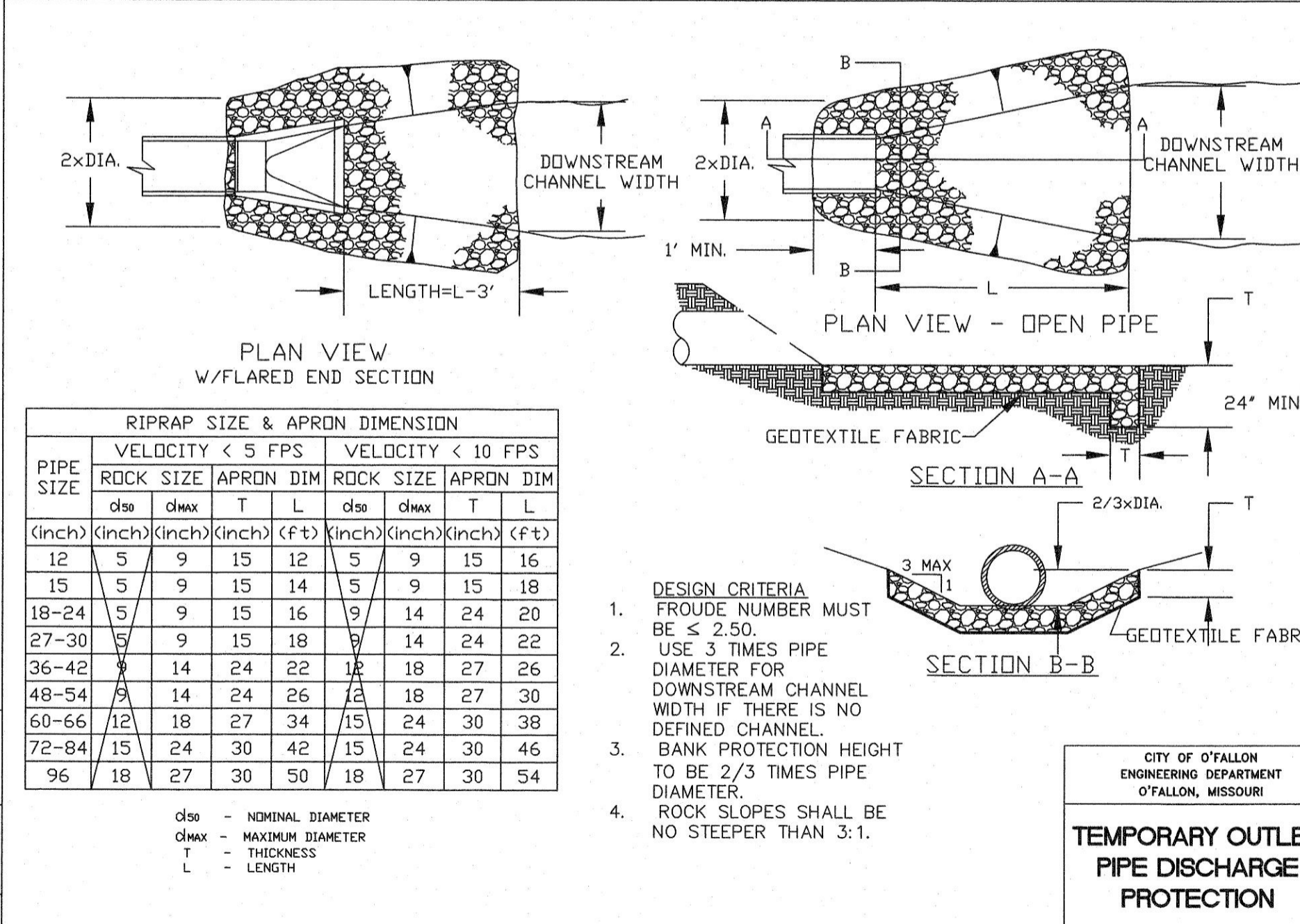


DESIGN CRITERIA

- MAXIMUM DRAINAGE AREA - 1 ACRE.
- PEAK RUNOFF SHALL NOT EXCEED 2 CFS BASED ON A 6-MONTH STORM EVENT.
- OTHER SEDIMENT PROTECTION PRODUCTS MAY BE USED, SUCH AS FILTER FENCE™.

St. Charles County
Erosion & Sediment Controls
Standard Drawings

AREA INLET PROTECTION FABRIC DROP



CITY OF O'FALLON
ENGINEERING DEPARTMENT
O'FALLON, MISSOURI

TEMPORARY OUTLET PIPE DISCHARGE PROTECTION

RIPRAP SIZE & APRON DIMENSION

PIPE SIZE	VELOCITY < 5 FPS				VELOCITY < 10 FPS			
	dia	dia _{max}	T	L	dia	dia _{max}	T	L
12	5	9	15	12	5	9	15	16
15	5	9	15	14	5	9	15	18
18-24	5	9	15	16	9	14	24	20
27-30	5	9	15	18	14	24	22	
36-42	9	14	24	22	18	27	26	
48-54	9	14	24	26	18	27	30	
60-66	12	18	27	34	15	24	30	38
72-84	15	24	30	42	15	24	30	46
96	18	27	30	50	18	27	30	54

PROJECT TITLE:
COSMOS CORPORATION
BUILDING ADDITION
601 PEARL DRIVE
O'FALLON, MO. 63376

ENGINEERING PLANNING SURVEYING
221 Point View Blvd.
St. Charles, MO 63301
636-929-5562
FAX 928-1718



DISCLAIMER OF RESPONSIBILITY
I hereby specify that the documents intended to be authorized by my seal are limited to this sheet, and I hereby disclaim any responsibility for all other drawings, specifications, estimates, reports or other documents or instruments relating to or intended to be used for any part or parts of the architectural or engineering project described.

CLIFFORD L. HEITMANN
NUMBER E-29817
CIVIL ENGINEER

Copyright 2021
Box Engineering Company, Inc.
Authority No. 000555
All Rights Reserved

REVISIONS

NO.	DATE	DESCRIPTION
9-24-21		city comments

Developer / Owner:
POINT WEST PROPERTIES LLC
103 ENTERPRISE DRIVE
WENTZVILLE, MISSOURI 63385
636-327-5575

P+Z No. #21-003877
Approval Date: 6-3-21
City No. #
Page No. 11 of 13

EROSION CONTROL DETAILS