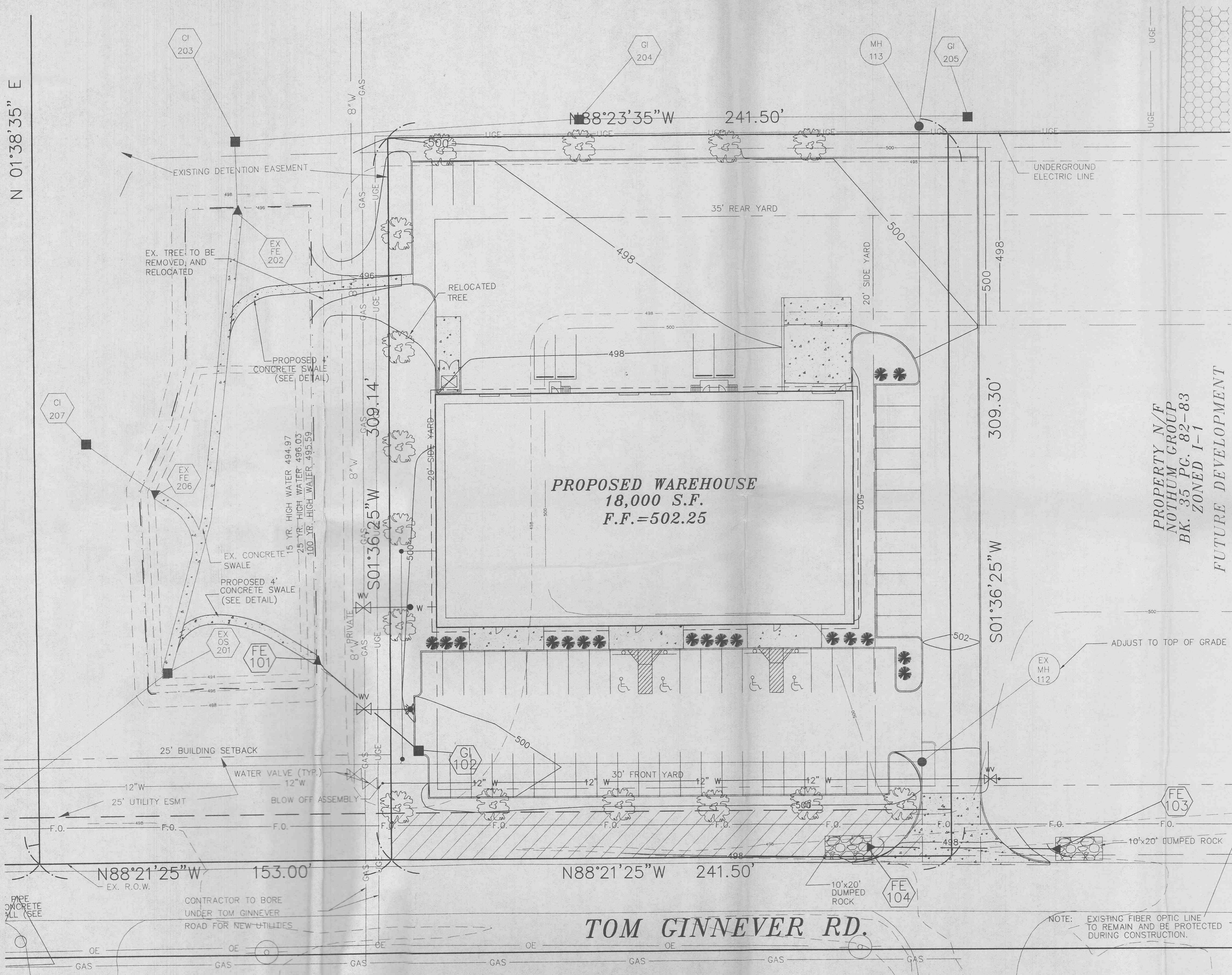




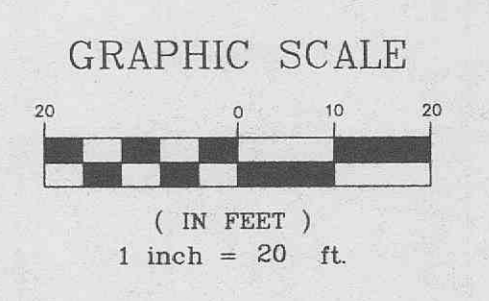
N 01°38'35" E



PROPERTY N/F
 NOTHUM GROUP
 BK. 35 PG. 82-83
 ZONED I-1
 FUTURE DEVELOPMENT

LANDSCAPE LEGEND

-  QTY. 15 INDICATES PROPOSED HARDWOOD TREE (ashes, oaks, maples, birches, sweet gum)
 -  QTY. 18 INDICATES PROPOSED EVERGREEN SHRUB (mugho pines, yews, junipers, hollies, boxwoods)
- LANDSCAPING AS DEPICTED IS SUBJECT TO FINAL DESIGN BY A QUALIFIED LANDSCAPE DESIGNER



NOTE: EXISTING FIBER OPTIC LINE TO REMAIN AND BE PROTECTED DURING CONSTRUCTION.

TOM GINNEVER RD.

PROPERTY N/F
 FORT ZUMWALT SCHOOL DISTRICT R-2
 BK. 654 PG. 41

E:\work\9000p\us\92035-country side carpets\construction\92035con.dwg Fri Oct 20 09:27:24 2000 STA. 41 (REBECCA H.)