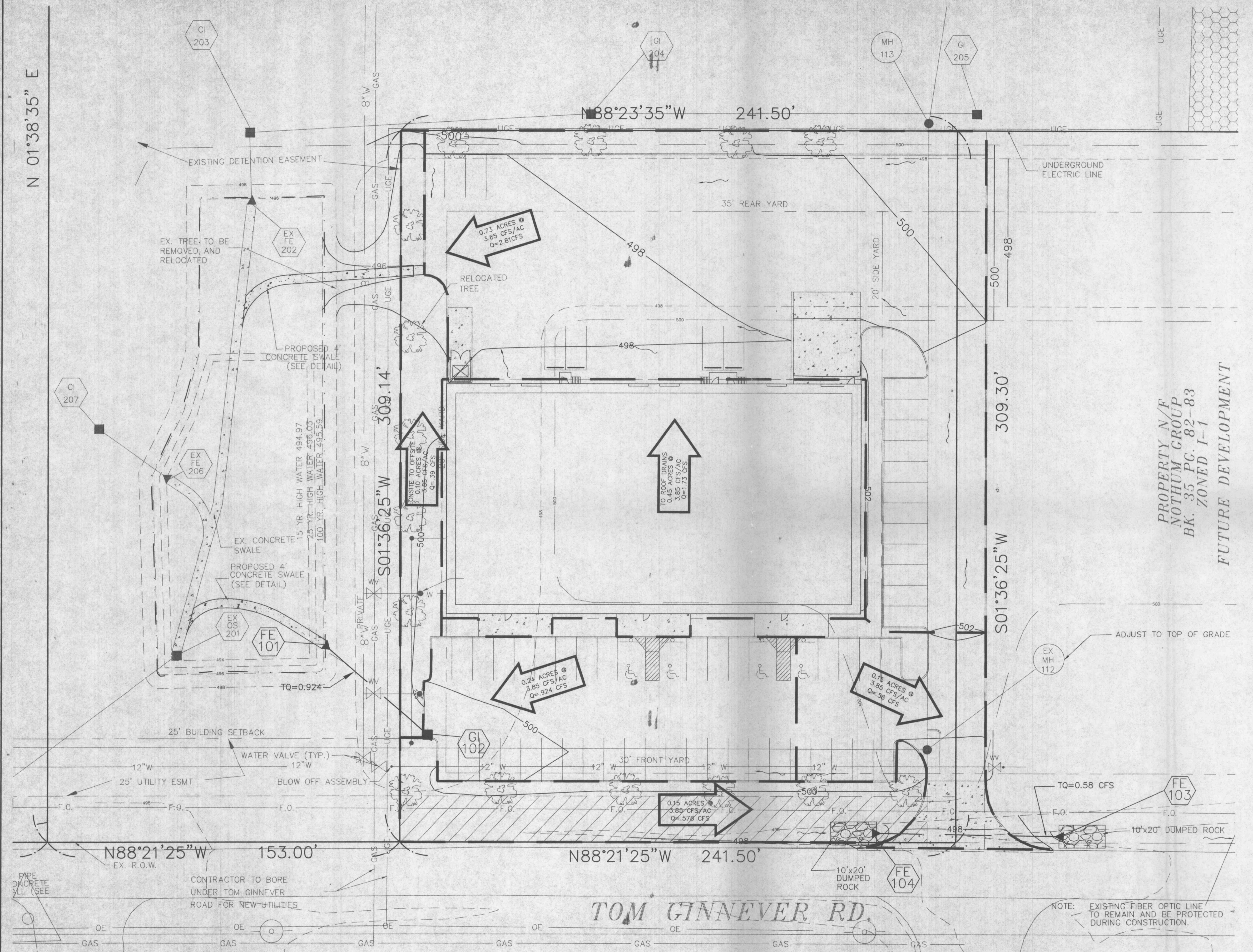


N 01°38'35" E

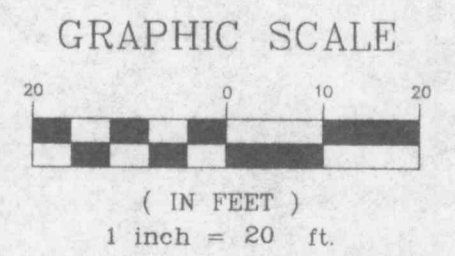


PROPERTY N/F
 NOTHUM GROUP
 BK. 35 PG. 82-83
 ZONED I-1
 FUTURE DEVELOPMENT

TOM GINNEVER RD.

PROPERTY N/F
 FORT ZUMWALT SCHOOL DISTRICT R-2

THIS SHEET FOR DRAINAGE PURPOSES ONLY, NOT TO BE USED FOR CONSTRUCTION PURPOSES!!!



E:\vha\000\p\us\2003s-country side Carpet\Construction\9203scon.dwg Fri Oct 20 09:27:05 2000 STA. 41 (REBECCA H.)