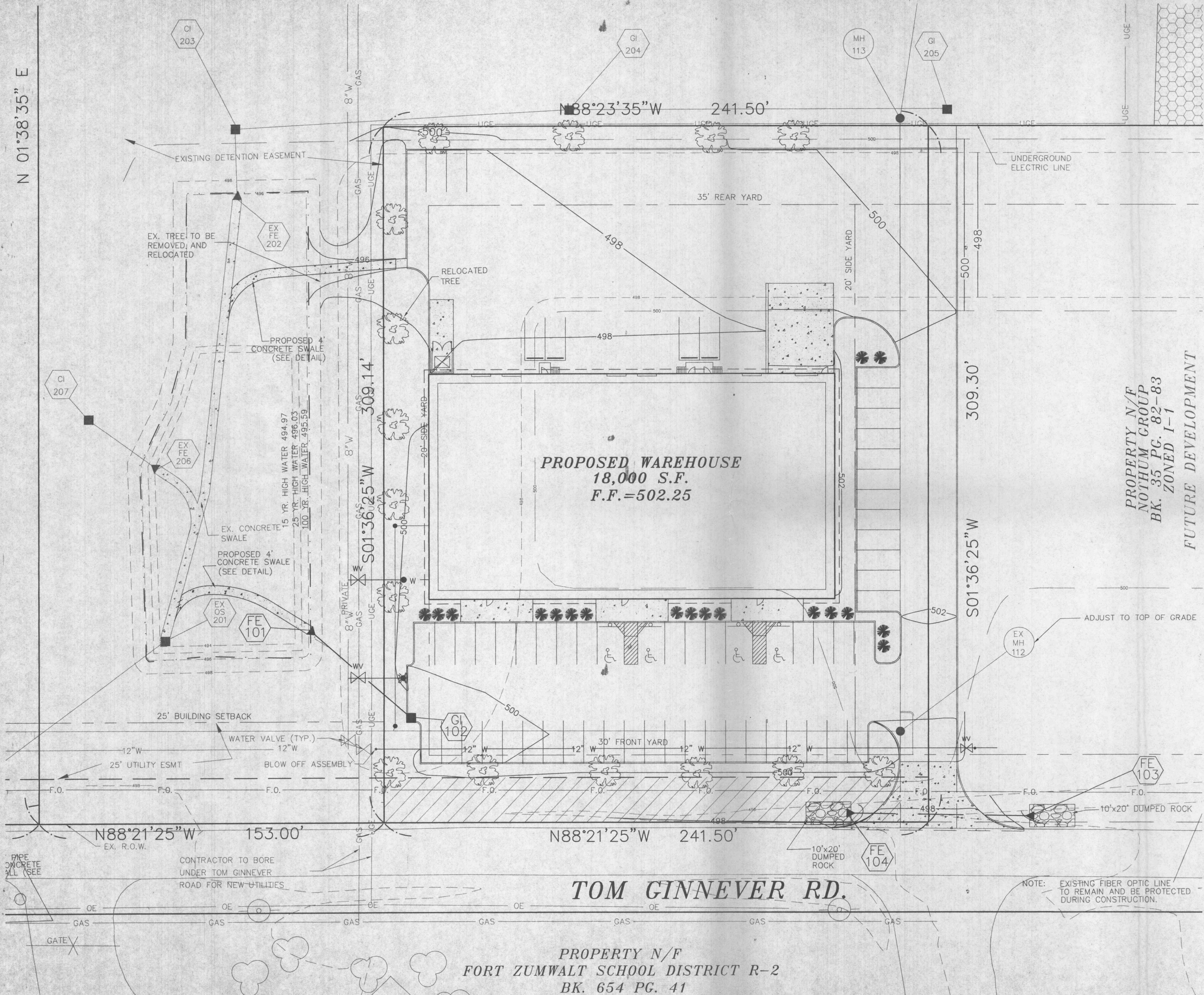




N 01°38'35" E

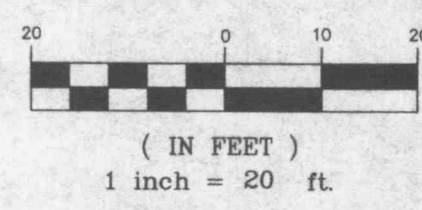


PROPERTY N/F
 NOTHUM GROUP
 BK. 35 PG. 82-83
 ZONED I-1
 FUTURE DEVELOPMENT

LANDSCAPE LEGEND

- 
 QTY. 15 INDICATES PROPOSED HARDWOOD TREE (ashes, oaks, maples, birches, sweet gum)
 - 
 QTY. 18 INDICATES PROPOSED EVERGREEN SHRUB (mugho pines, yews, junipers, hollies, boxwoods)
- LANDSCAPING AS DEPICTED IS SUBJECT TO FINAL DESIGN BY A QUALIFIED LANDSCAPE DESIGNER

GRAPHIC SCALE



TOM GINNEVER RD.

PROPERTY N/F
 FORT ZUMWALT SCHOOL DISTRICT R-2
 BK. 654 PG. 41

NOTE: EXISTING FIBER OPTIC LINE TO REMAIN AND BE PROTECTED DURING CONSTRUCTION.

E:\vcp\90000.us\32035-country_side_carpet\construction\90035con.dwg Fri Oct 20 09:27:24 2000 STA. 41 (PERECCA H.)