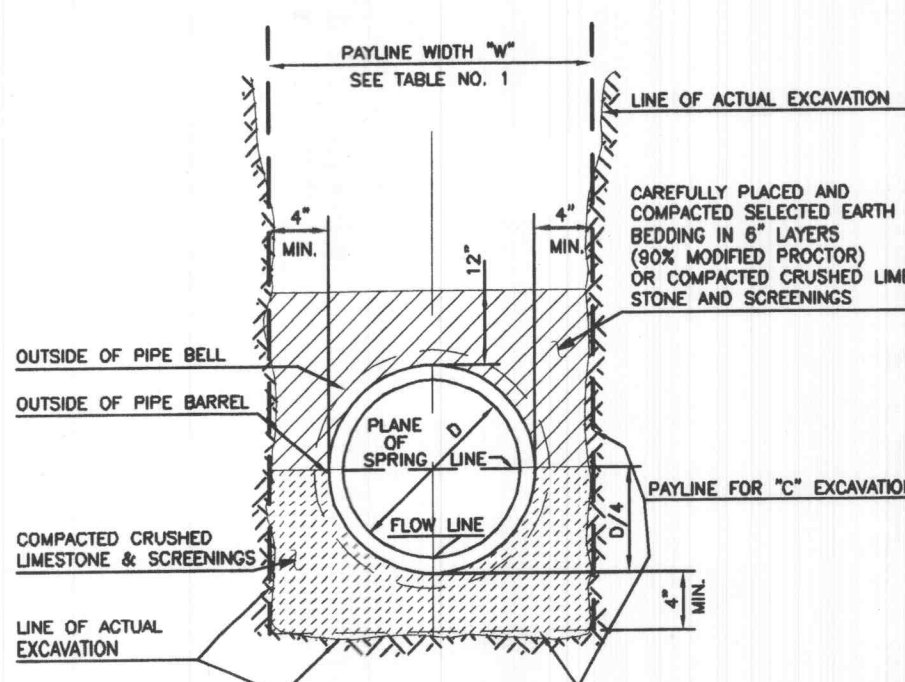
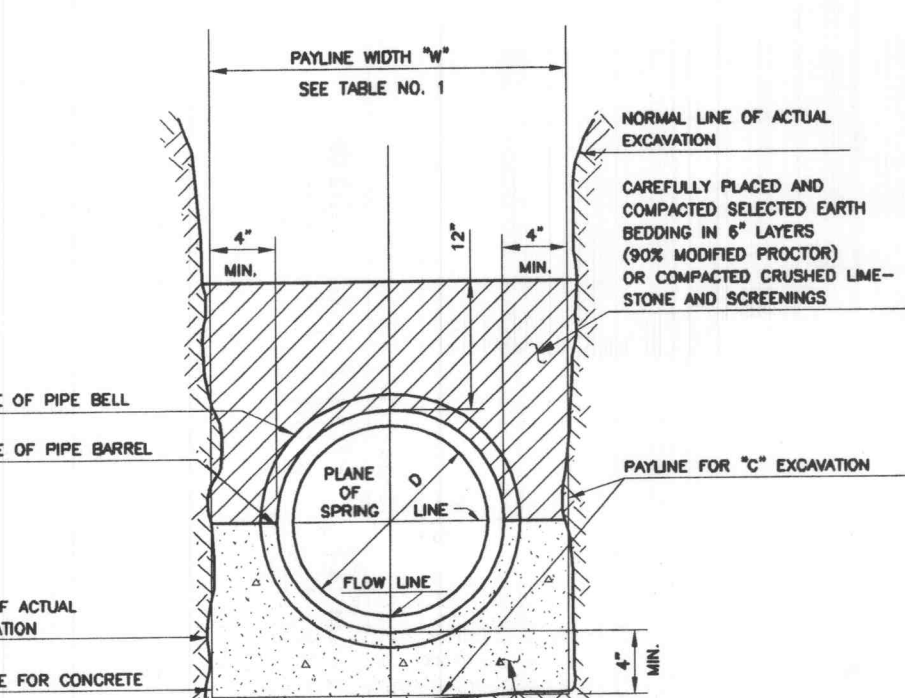


ROUND PIPE				HORIZONTAL ELLIPTICAL PIPE			
Inside Diameter of Pipe (Inches)	Frame Width of Trench (Inches)	Pay-Volume (cu yd)	Concrete Encasement	Inside Diameter of Pipe (Inches)	Frame Width of Trench (Inches)	Pay-Volume (cu yd)	Concrete Encasement
4	28	2.33	3.70				
6	28	2.33	3.46				
8	28	2.33	3.20				
10	28	2.33	3.86				
12	28	2.33	3.98				
15	32	2.67	4.89				
18	35	2.92	5.63	14 X 23	41	3.42	5.94
21	39	3.25	6.81				
24	42	3.50	7.39	19 X 30	49	4.08	7.88
27	45	3.75	8.18	22 X 34	51	4.42	8.81
30	48	4.08	9.30	24 X 38	58	4.83	9.70
33	53	4.42	10.53	27 X 42	62	5.17	10.71
36	56	4.67	11.43	29 X 45	66	5.50	11.72
39	61	5.00	12.75	32 X 49	71	5.92	13.14
42	63	5.25	13.38	34 X 53	76	6.25	14.05
45	70	5.83	15.67	38 X 60	83	6.92	16.18
48	77	6.42	18.15	43 X 68	92	7.67	18.81
60	84	7.00	20.73	48 X 76	101	8.42	21.59
66	91	7.58	23.45	53 X 83	109	9.09	24.35
72	98	8.17	26.37	58 X 91	118	9.83	27.45
78	105	8.75	29.39	63 X 98	126	10.50	30.90
84	112	9.33	32.67	68 X 106	133	11.25	33.91
90	119	9.92	35.90	72 X 113	143	11.92	36.99
96	126	10.50	39.37	77 X 121	152	12.67	40.98
102	133	11.08	42.99	82 X 129	160	13.33	44.45
108	140	11.67	46.75	87 X 136	168	14.00	47.79
114	147	12.25	50.68	92 X 143	176	14.67	51.70
120	154	12.83	54.72	97 X 151	185	15.42	56.01
126	161	13.42	58.82				
132	168	14.00	63.07	106 X 166	202	16.83	64.58
144	182	15.17	72.40	116 X 180	218	18.17	73.90

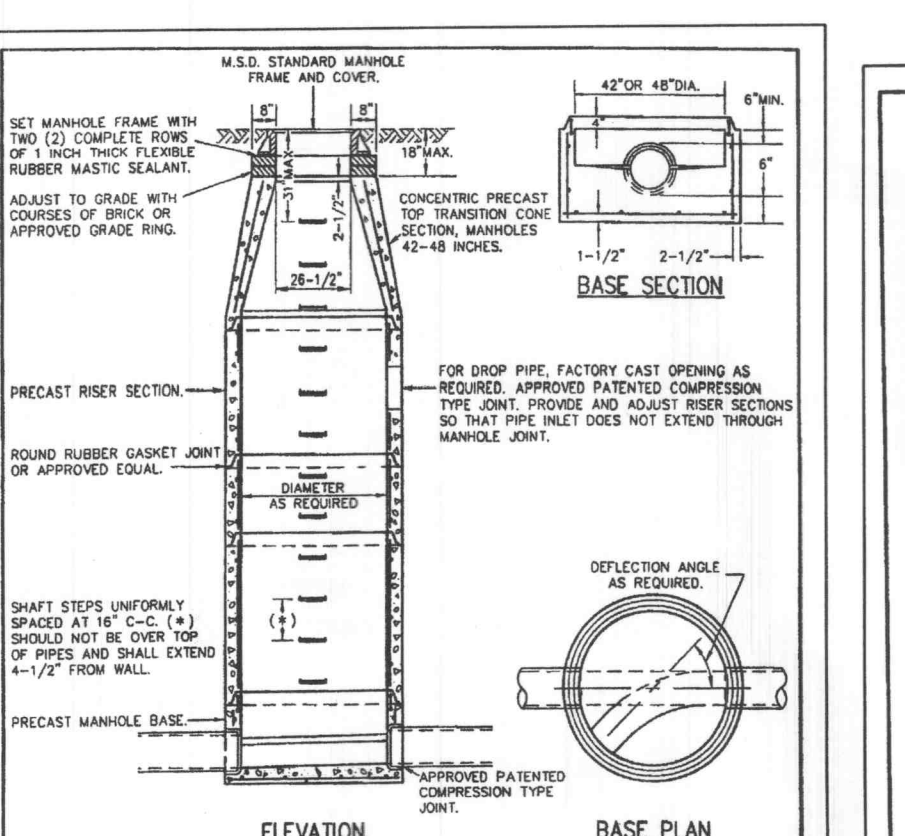
TABLE NO. 1
PAYLINE WIDTHS OF TRENCH AND
PAY-QUANTITIES OF CONCRETE



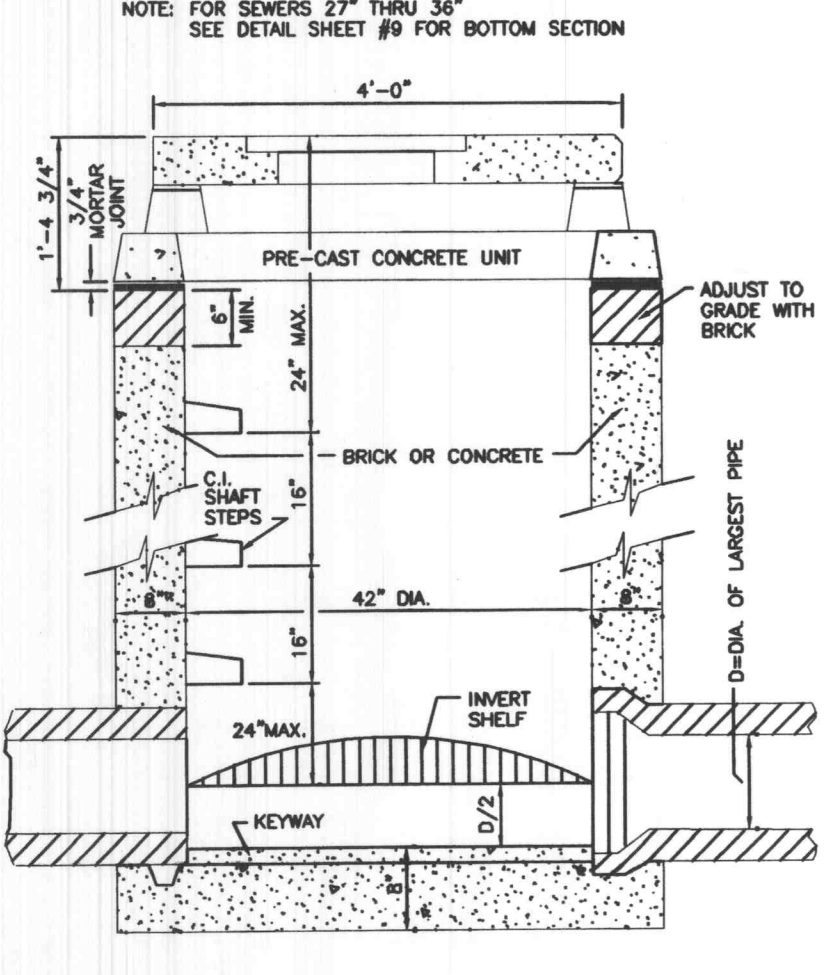
PIPE BEDDING CLASS "C"
(FOR ALL PIPE EXCEPT
REINFORCED CONCRETE PIPE)



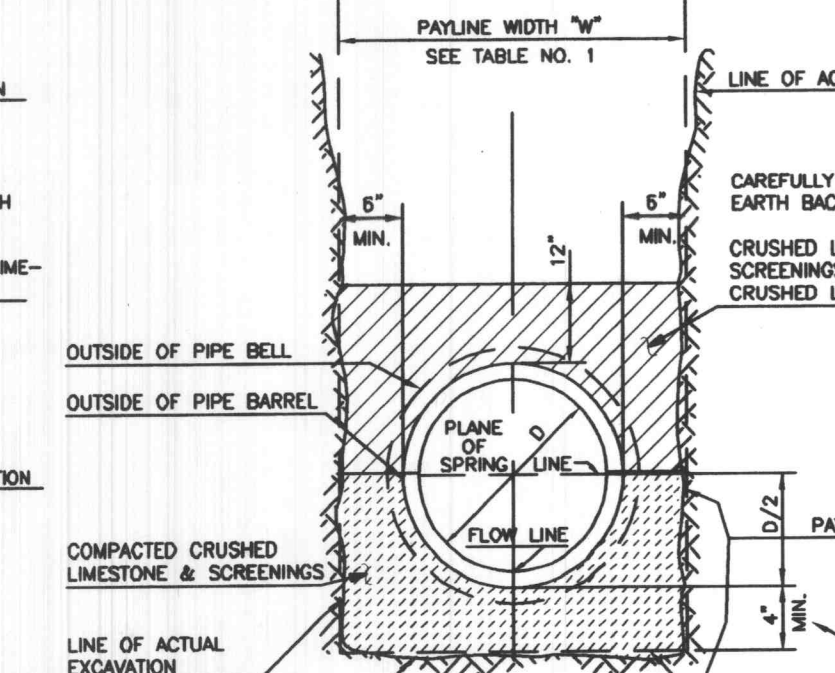
(CLASS "A" BEDDING)
CONCRETE CRADLE



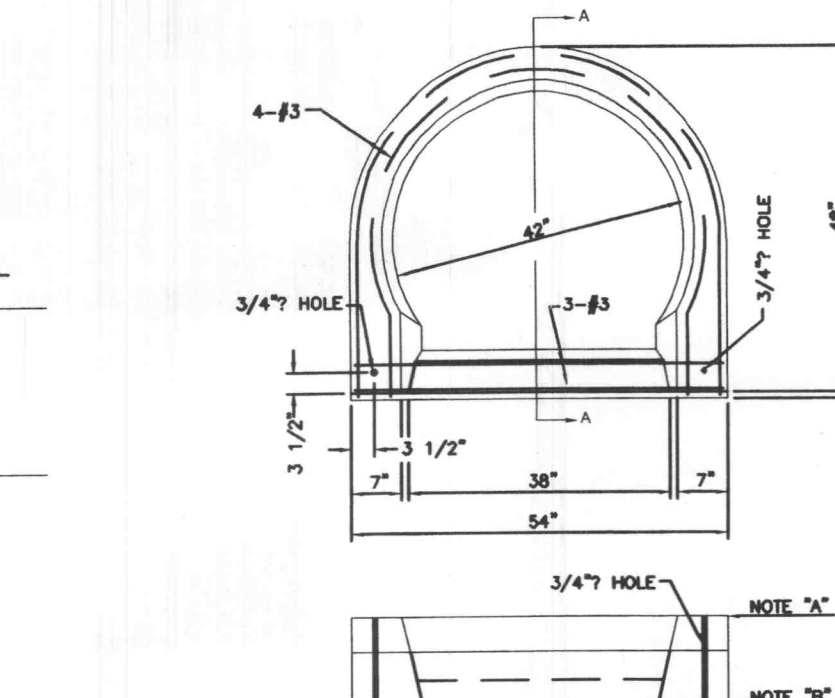
PRECAST CONCRETE MANHOLE
METROPOLITAN ST. LOUIS SEWER DISTRICT
Standard Details of Sewer Construction
Dr. J.C.K. 2000 SHEET 21



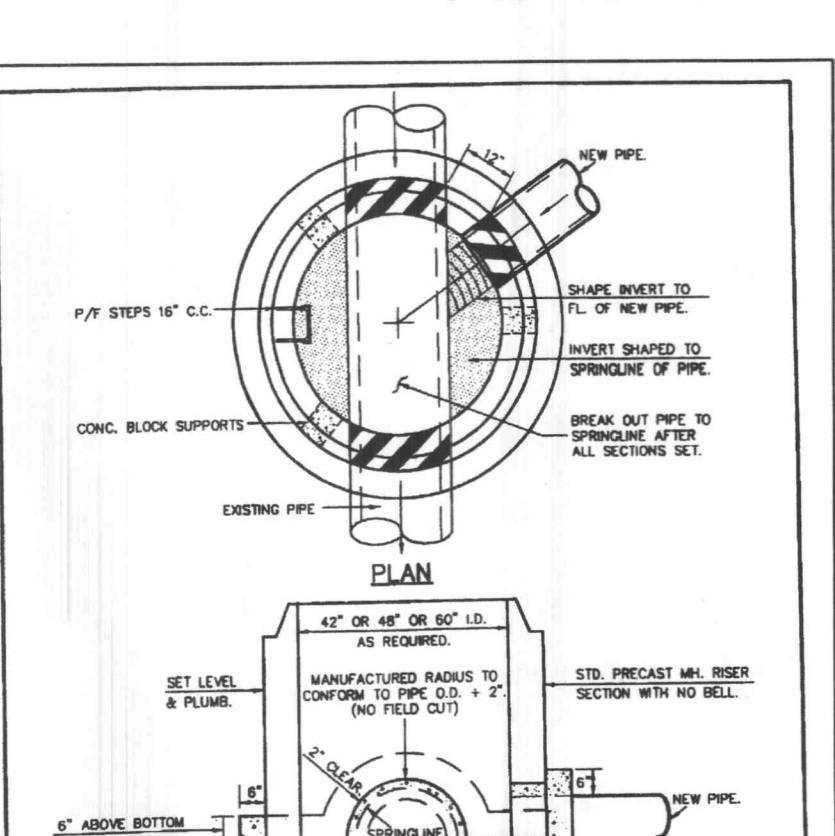
AREA INLET
(12" THRU 24")



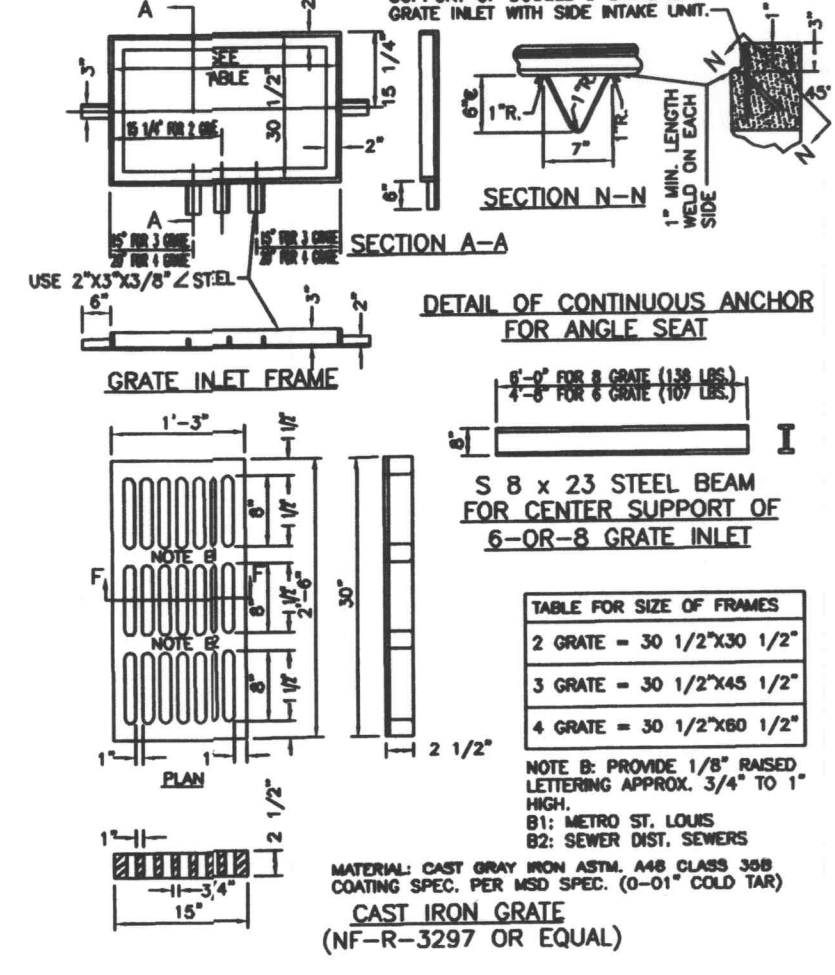
PRECAST CONCRETE UNIT
FOR
4-WAY AREA INLET



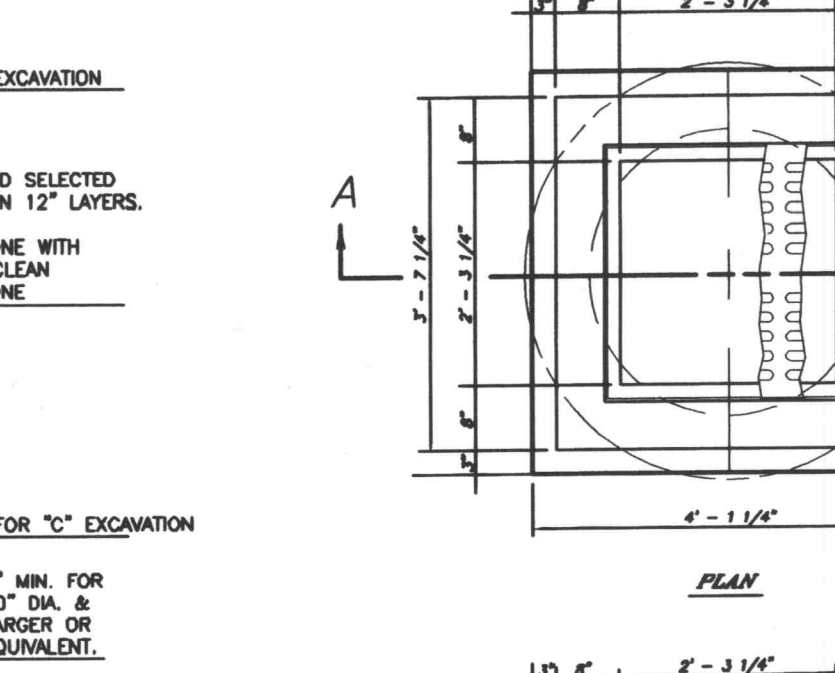
PRECAST CONCRETE UNIT
FOR
SINGLE CURB INLET



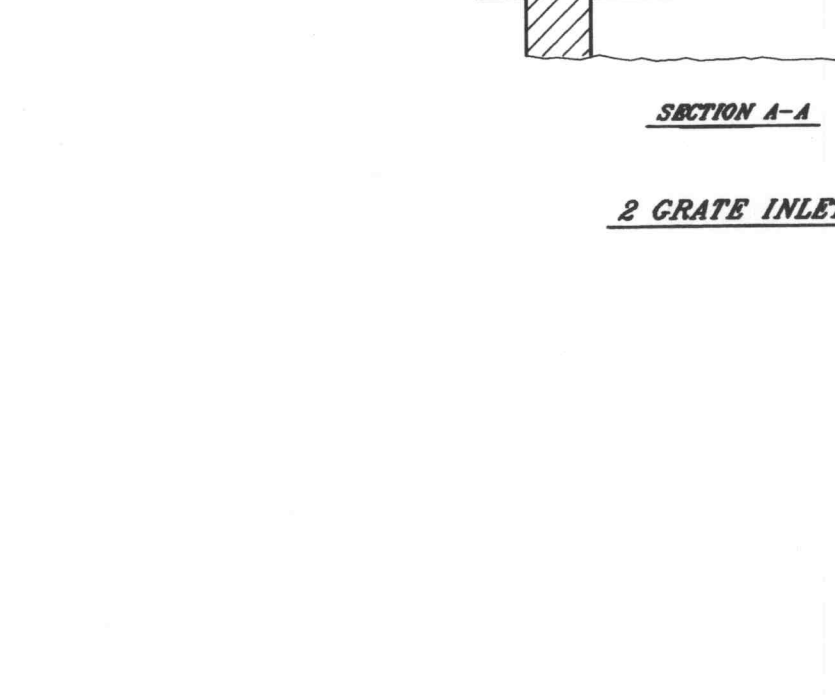
PRECAST MANHOLE ON EXIST.
PIPE W/CONTINUOUS FLOW ONLY
METROPOLITAN ST. LOUIS SEWER DISTRICT
Standard Details of Sewer Construction
Dr. J.C.K. 2000 SHEET 22



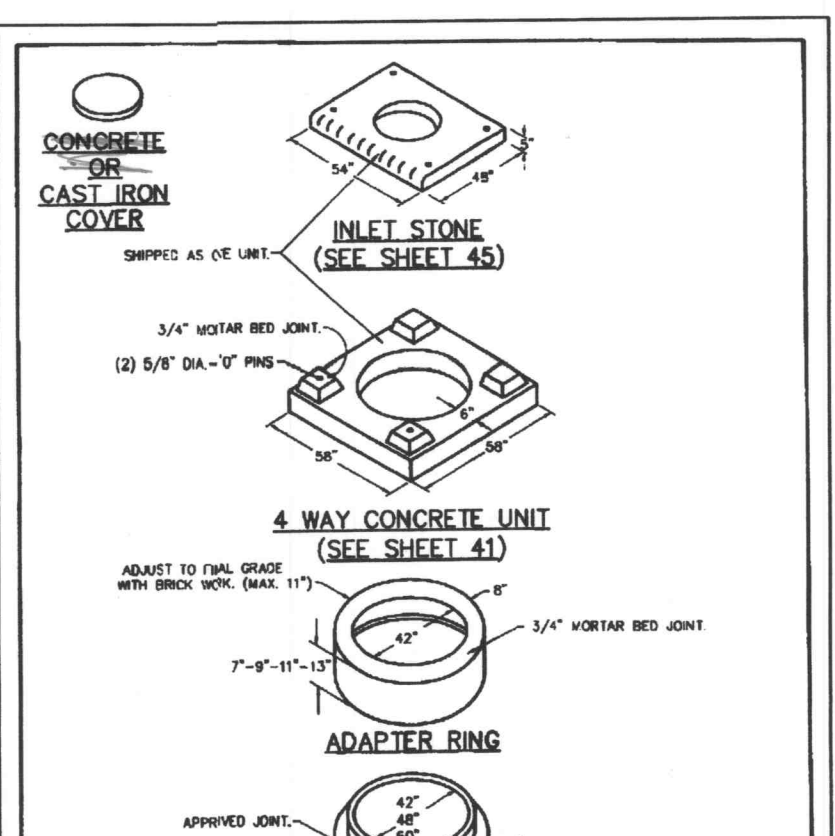
DETAILS OF INLET
FRAME AND GRATES



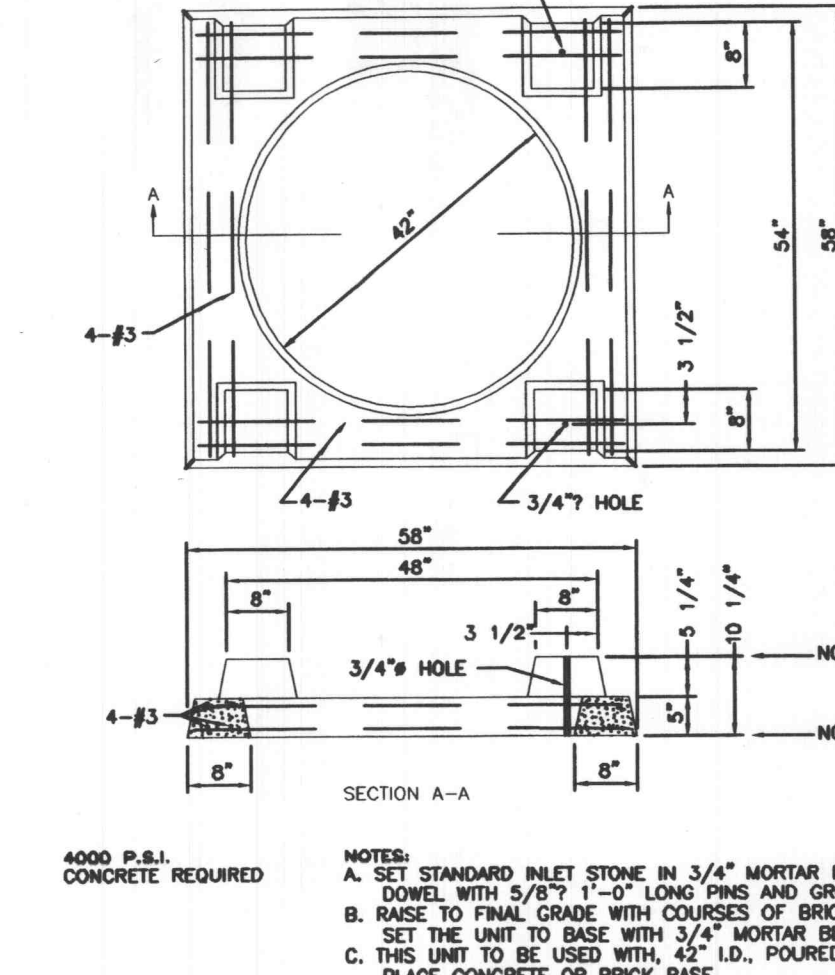
2 GRATE INLET



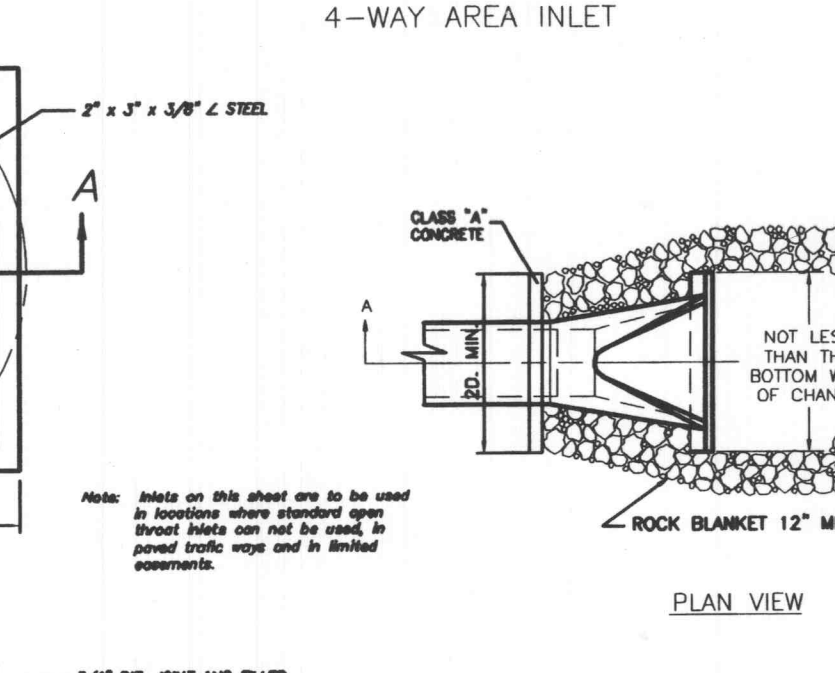
SECTION A-A



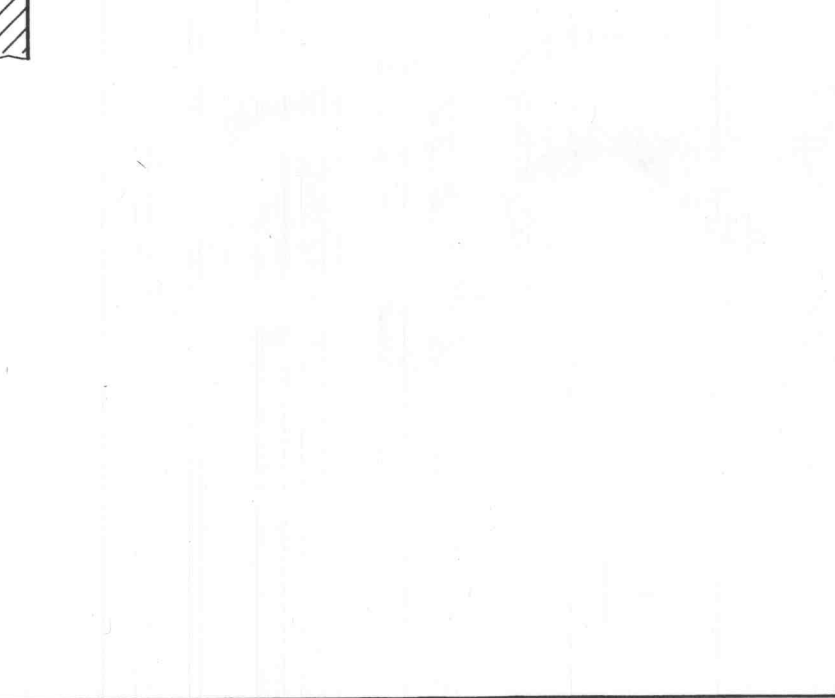
AREA INLET
PRECAST CONCRETE
METROPOLITAN ST. LOUIS SEWER DISTRICT
Standard Details of Sewer Construction
Dr. J.C.K. 2000 SHEET 35



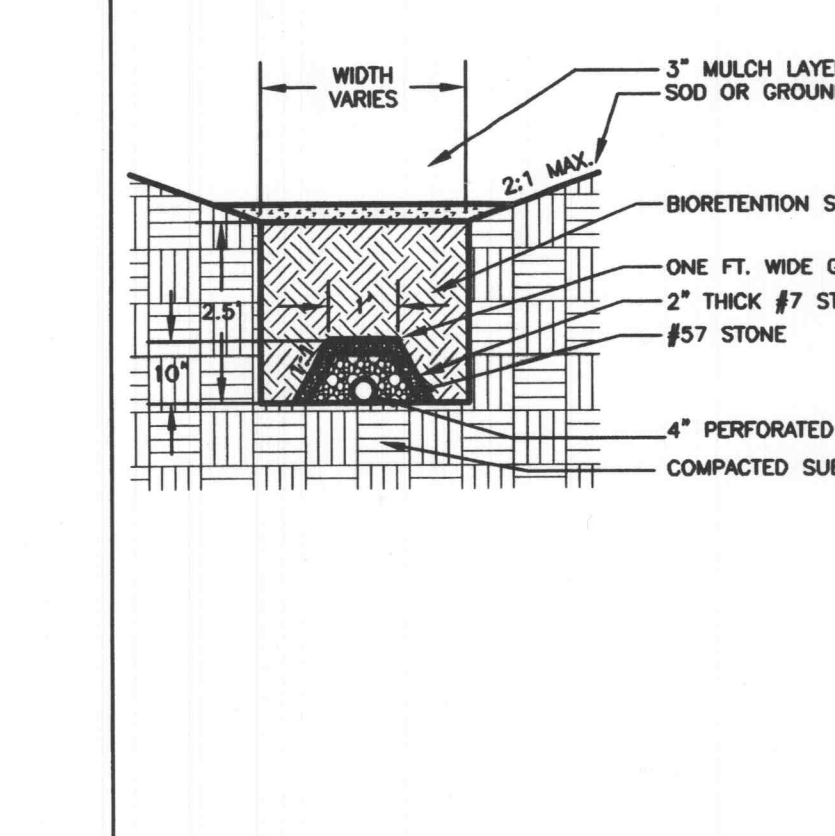
PRECAST CONCRETE UNIT
FOR
4-WAY AREA INLET



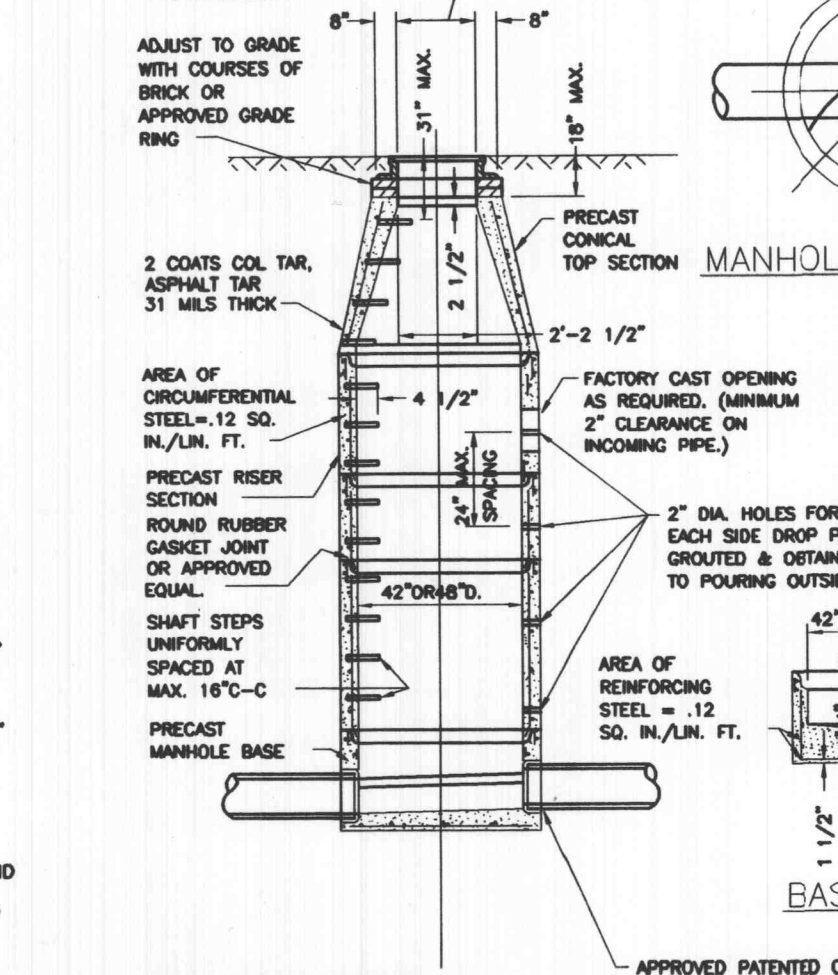
FLARED END SECTION



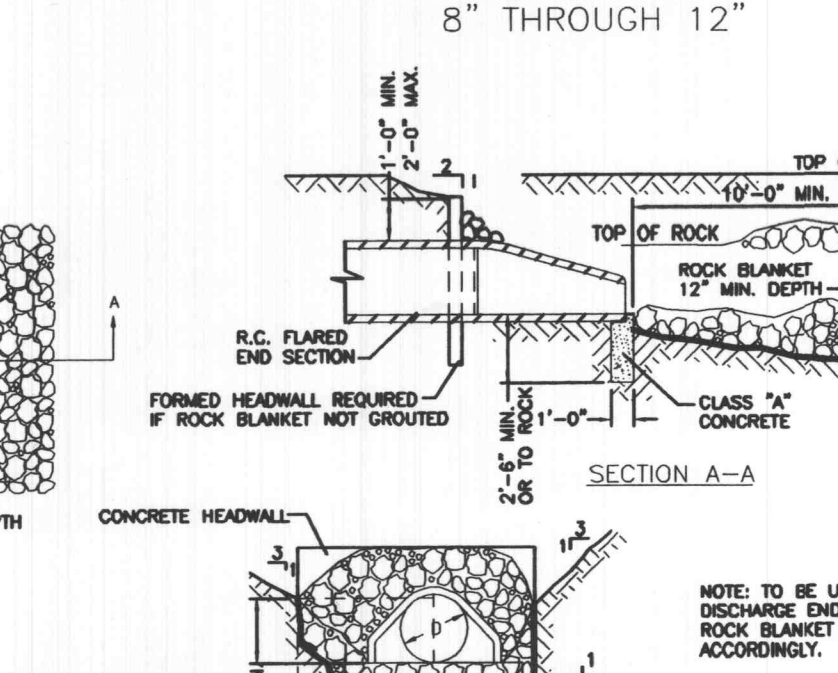
SECTION A-A



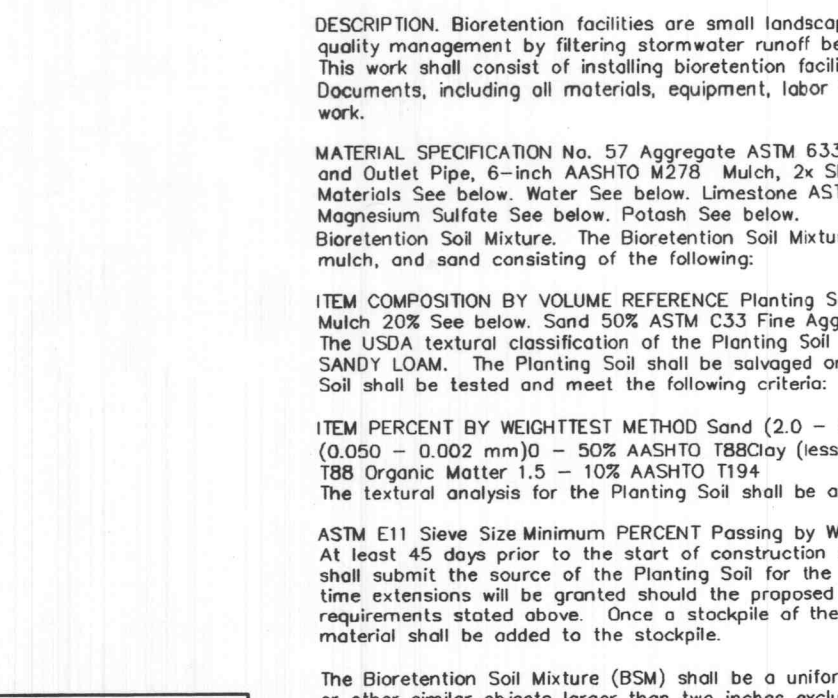
BIORETENTION CELL
NOT TO SCALE



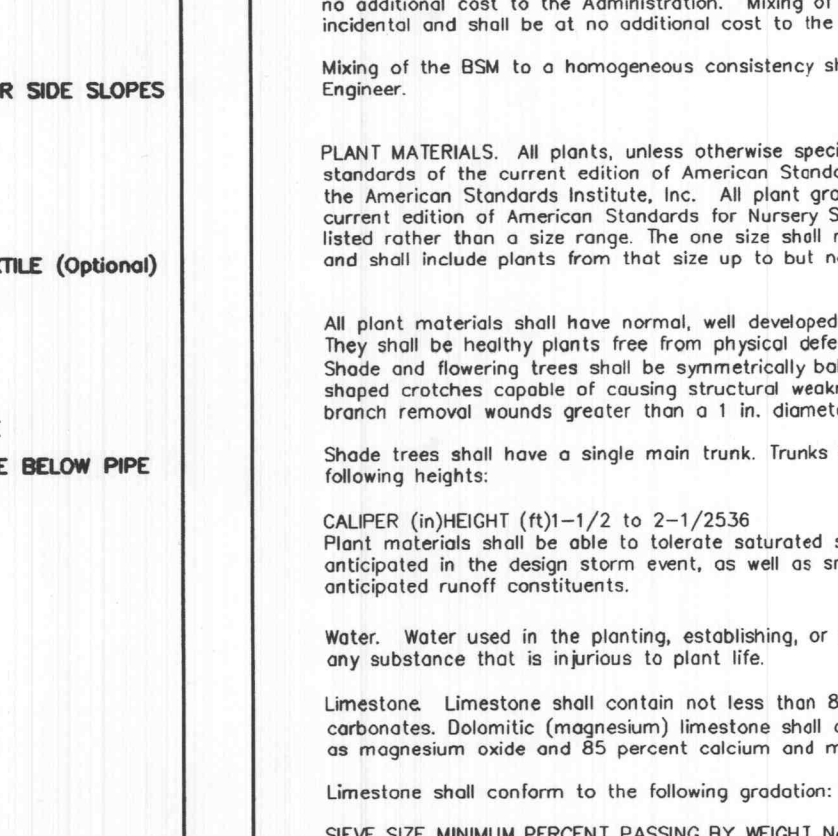
PRECAST CONCRETE MANHOLE
FOR SEWERS
8" THROUGH 12"



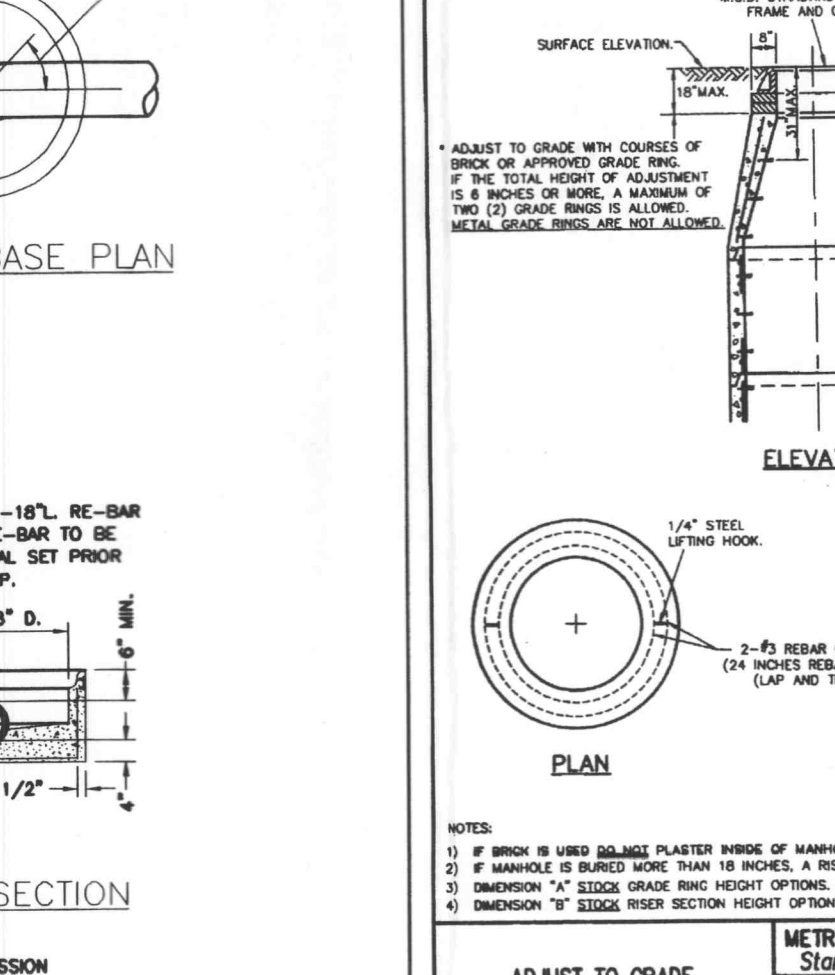
FLARED END SECTION



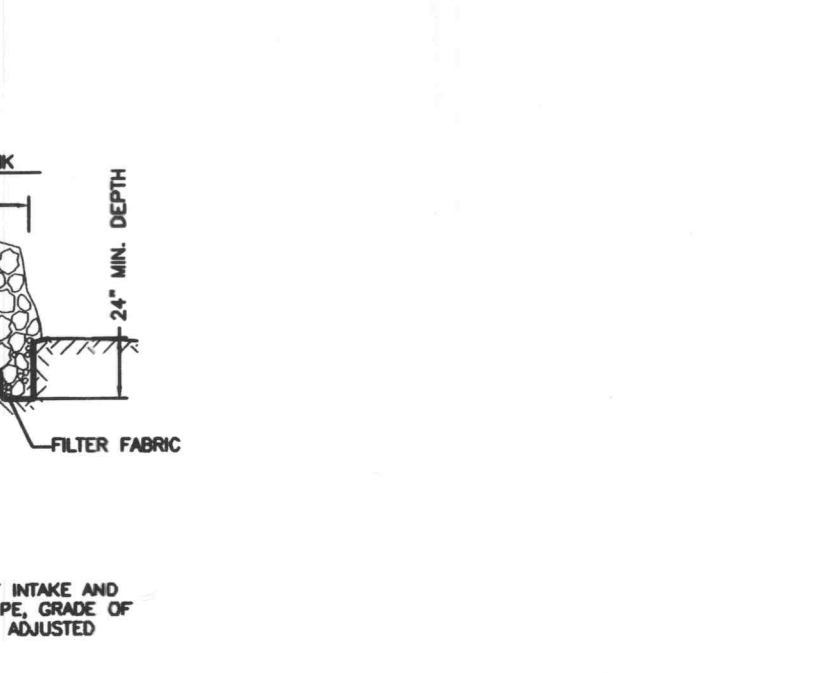
SECTION A-A



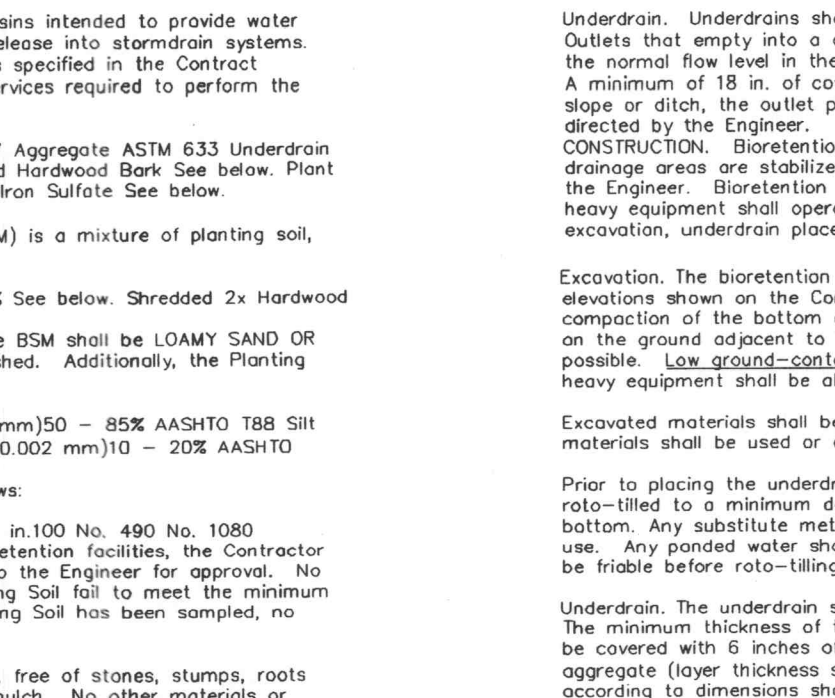
BIORETENTION CELL
NOT TO SCALE



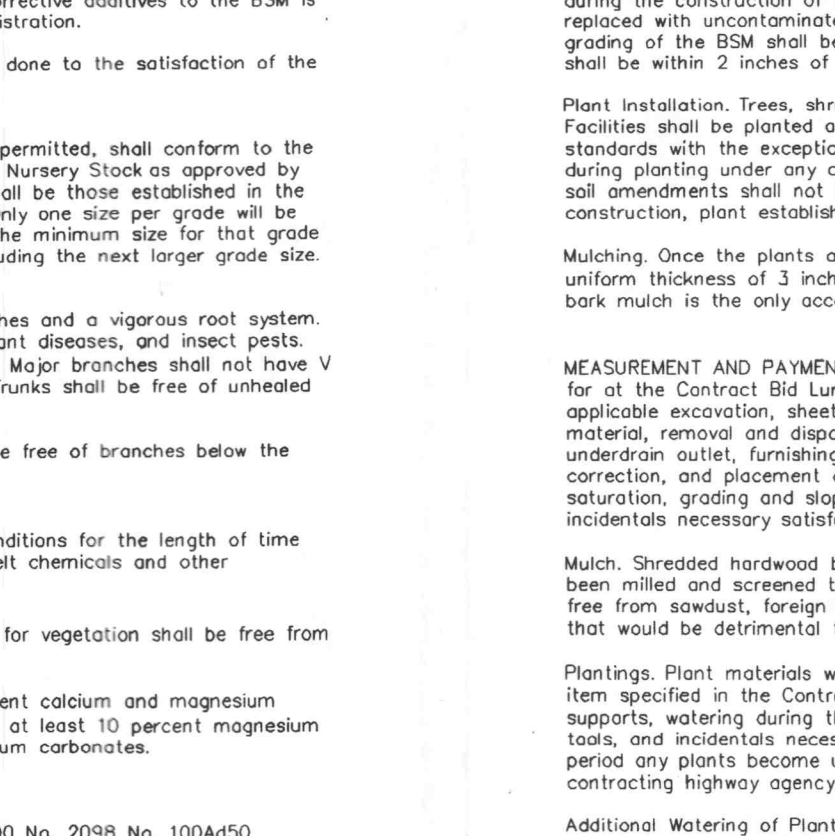
PRECAST CONCRETE MANHOLE
FOR SEWERS
8" THROUGH 12"



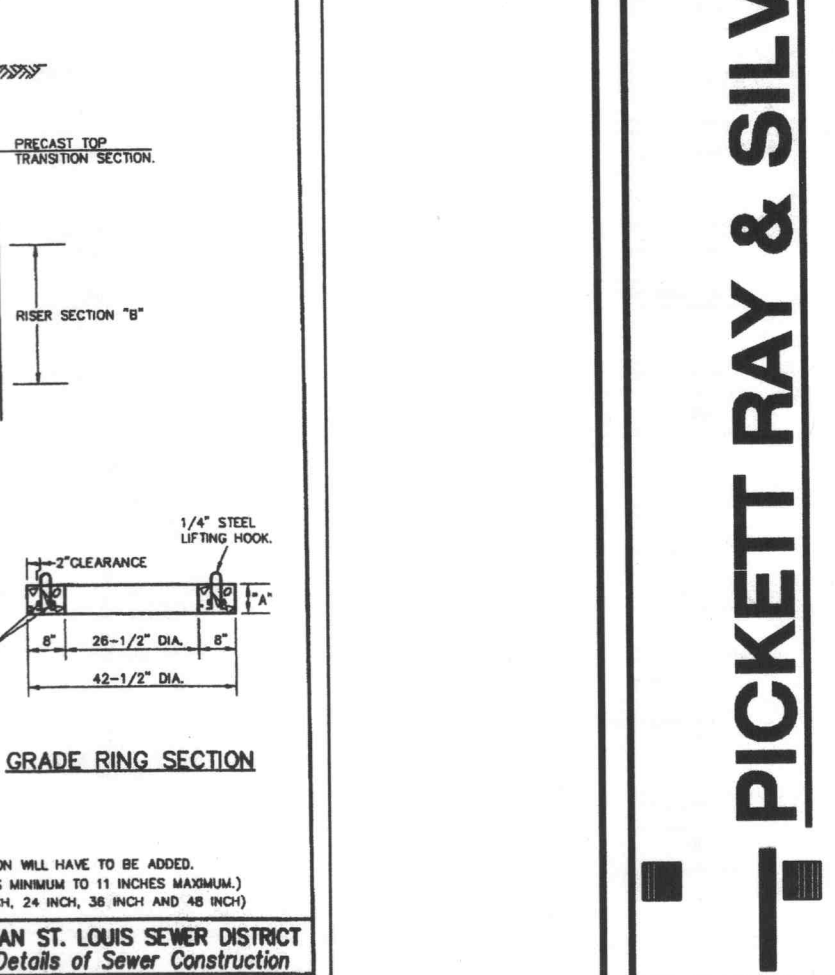
FLARED END SECTION



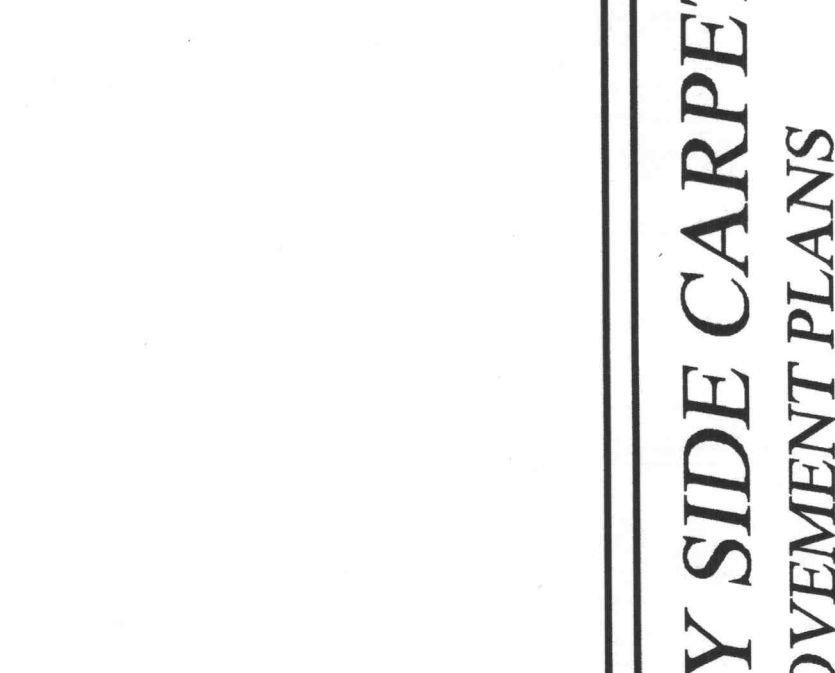
SECTION A-A



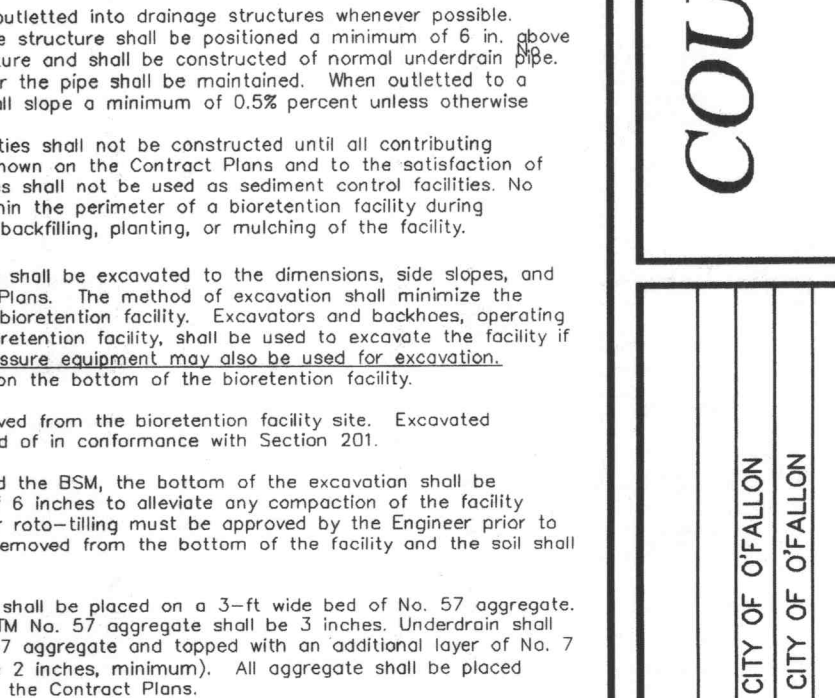
BIORETENTION CELL
NOT TO SCALE



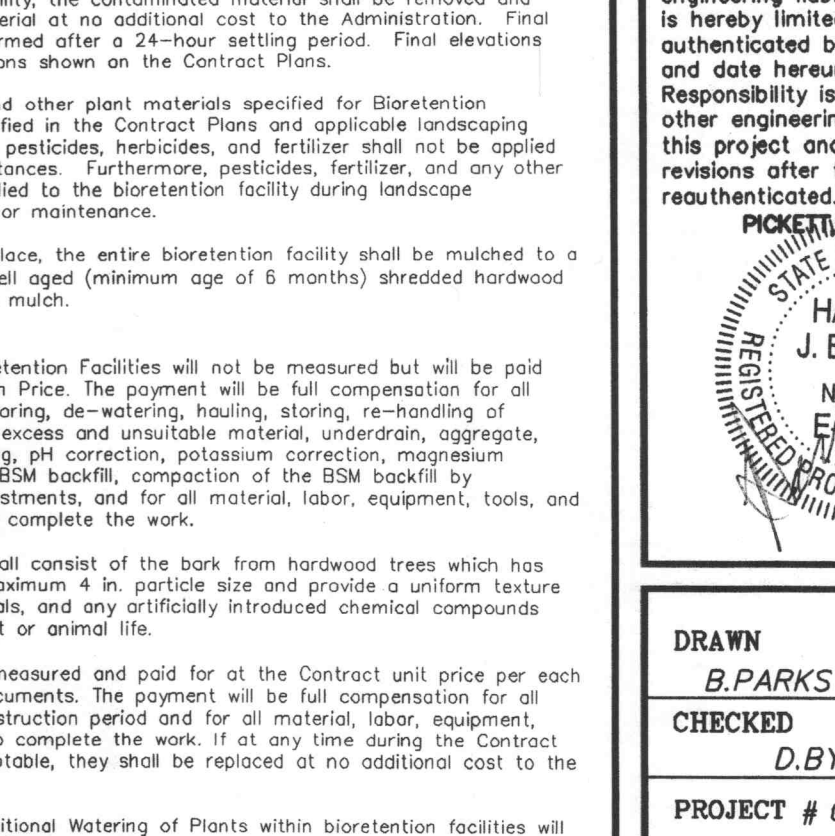
PRECAST CONCRETE MANHOLE
FOR SEWERS
8" THROUGH 12"



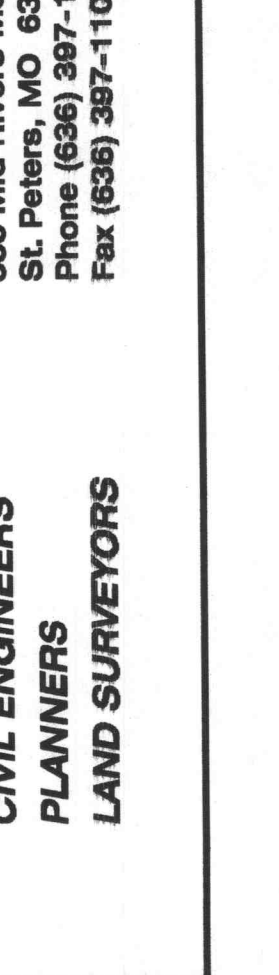
FLARED END SECTION



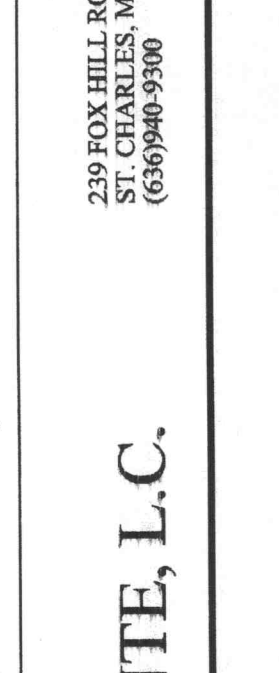
SECTION A-A



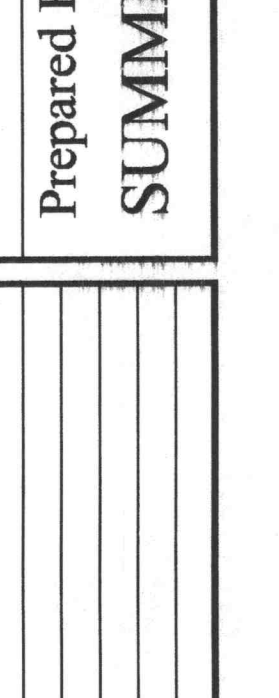
BIORETENTION CELL
NOT TO SCALE



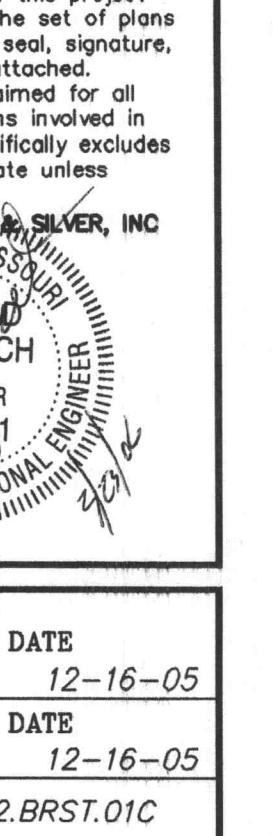
PRECAST CONCRETE MANHOLE
FOR SEWERS
8" THROUGH 12"



FLARED END SECTION



SECTION A-A



BIORETENTION CELL
NOT TO SCALE

PICKETT RAY & SILVER
CIVIL ENGINEERS
PLANNERS
LAND SURVEYORS
353 Mid Rivers Mall Drive
St. Peters, MO 63376
Phone (636) 397-1211
Fax (636) 397-1104

COUNTRY SIDE CARPETS
IMPROVEMENT PLANS
O'FALLON, MO
Prepared For:
SUMMIT POINTE, L.C.
239 FOX HILLS ROAD
O'FALLON, IL 62450
(636)940-9300

REVISIONS	NO.	DATE	PER CITY OF OFALLON	PER CITY OF OFALLON
	01-31-06			
	03-23-06			

ENGINEERS AUTHENTICATION
The responsibility for professional engineering liability on this project is hereby limited to the set of plans authorized by the seal, signature, and date hereunder attached. Responsibility is disclaimed for all other engineering plans involved in this project and specifically excludes revision after this date unless reauthenticated.
PICKETT RAY & SILVER, INC.
HAROLD J. BARTCH
REGISTERED PROFESSIONAL ENGINEER
NO. 47781

DRAWN **B.PARKS** DATE **12-16-05**
CHECKED **D.BYRD** DATE **12-16-05**
PROJECT # **01212.BRST.01C**
TASK # **2** FIELD BOOK **826A**
COUNTRY SIDE CARPETS
IMPROVEMENT PLANS
CONSTRUCTION DETAILS
SHEET **8** OF **10**
Copyright 2005 by Pickett, Ray & Silver, Inc.

FILE #00-96.03