

NOTE:
LOTS AFFECTED BY TEMPORARY TURNAROUND
WILL NOT HAVE BUILDING PERMITS ISSUED
UNTIL AN ESCROW HAS BEEN ESTABLISHED TO
REMOVE THE TEMPORARY TURNAROUND FROM
THE LOT AND RIGHT-OF-WAY AND RESTORE
VEGETATION WHEN STREET IS EXTENDED IN
THE FUTURE.

N/F
JOHN C. DYKLE, ETAL
6387/1264

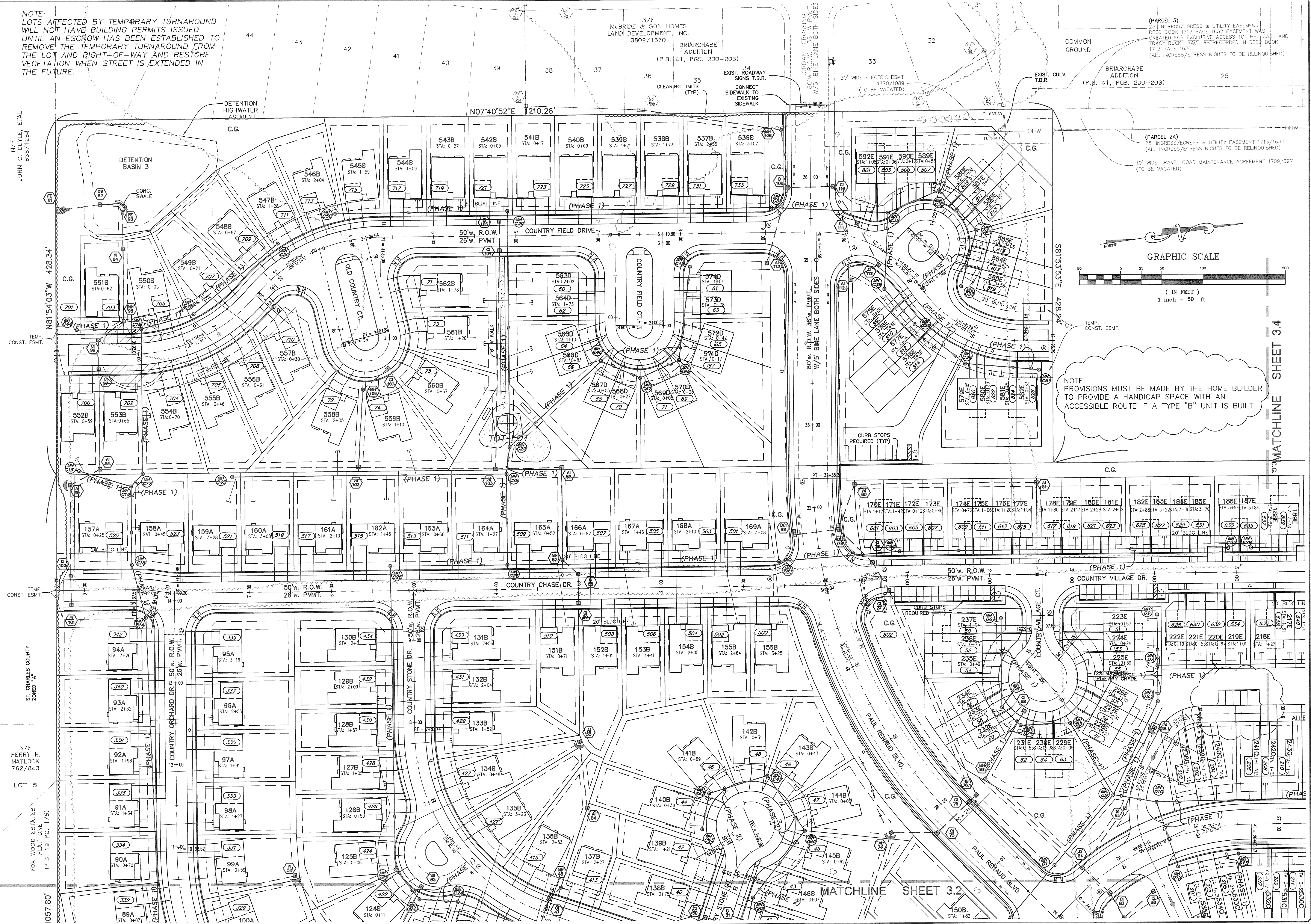
TEMP.
CONST. ESMT.

ST. CHARLES COUNTY
ZONED "A"

N/F
PERRY H. MATLOCK
762/843

FOX WOOD ESTATES
PLAT ONE
(P.B. 19 PG. 175)

LOT 5



DETENTION
BASIN 3

CONC.
SWALE

TEMP.
CONST. ESMT.

TEMP.
CONST. ESMT.

TEMP.
CONST. ESMT.

TEMP.
CONST. ESMT.

N/F
McBRIDE & SON HOMES
LAND DEVELOPMENT, INC.
3802/1570

BRIARCHASE
ADDITION
(P.B. 41, PGS. 200-203)

34
EXIST. ROADWAY
SIGNS T.B.R.

35
CLEARING LIMITS
(TYP)

CONNECT
SIDEWALK TO
EXISTING
SIDEWALK

30' WIDE ELECTRIC ESMT
1770/1089
(TO BE VACATED)

EXIST. CULV.
T.B.R.

BRIARCHASE
ADDITION
(P.B. 41, PGS. 200-203)

25'
INGRESS/EGRESS & UTILITY EASEMENT
DEED BOOK 1713 PAGE 1632 EASEMENT WAS
CREATED FOR EXCLUSIVE ACCESS TO THE CARL AND
TRACY BUCK TRACT AS RECORDED IN DEED BOOK
1713 PAGE 1630
(ALL INGRESS/EGRESS RIGHTS TO BE RELINQUISHED)

25'
INGRESS/EGRESS & UTILITY EASEMENT 1713/1630
(ALL INGRESS/EGRESS RIGHTS TO BE RELINQUISHED)

10' WIDE GRAVEL ROAD MAINTENANCE AGREEMENT 1709/697
(TO BE VACATED)

TEMP.
CONST. ESMT.

TEMP.
CONST. ESMT.

TEMP.
CONST. ESMT.

TEMP.
CONST. ESMT.

TEMP.
CONST. ESMT.

TEMP.
CONST. ESMT.

TEMP.
CONST. ESMT.

TEMP.
CONST. ESMT.

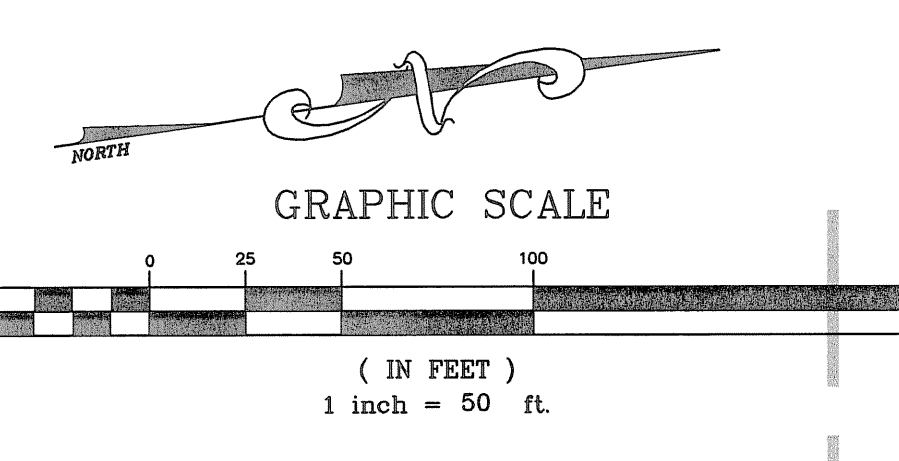
TEMP.
CONST. ESMT.

TEMP.
CONST. ESMT.

TEMP.
CONST. ESMT.

TEMP.
CONST. ESMT.

TEMP.
CONST. ESMT.



NOTE:
PROVISIONS MUST BE MADE BY THE HOME BUILDER
TO PROVIDE A HANDICAP SPACE WITH AN
ACCESSIBLE ROUTE IF A TYPE "B" UNIT IS BUILT.

MATCHLINE SHEET 3.4

MATCHLINE SHEET 3.2

ISSUE	REMARKS/DATE
10	CITY COMMENTS 02-02-06
11	CITY COMMENTS 02-15-06
12	REVISED ALIANT LOCATIONS 06-14-06
13	REVISED PER DEVELOPMENT COMMENTS 11-6-06
14	12-4-06 REVISED CITY COMMENTS
15	08-18-06 REVISED PARKING ALONG ALLEYS
17	CITY COMMENTS 02-20-06
8	WATER DISTRICT #2 COMMENTS 01-17-06
9	DEVELOPER REVISIONS 01-24-06

PREPARED FOR:

CMB RHODES, L.L.C.
P.O. Box 511038
St. Louis, MO 63151-1038
(314) 487-6717

PREPARED BY:

THE STERLING CO.
ENGINEERS & SURVEYORS
5055 NEW BAUMGARTNER ROAD
ST. LOUIS, MISSOURI 63129
E-Mail: Sterling@sterling-eng.com

DRAWN:	G.S.	DESIGNED:	J.C.M.	CHECKED:	
PROJECT:	COUNTRYSHIRE	SHEET TITLE:	SITE PLAN		
NO.	02	12	311		
M.S.D.				SHEET	3.3
#					
				OF	

Drawing name: K:\02\211 RHODES TRACT\IMPROVEMENTS\2311WP.dwg Plotted on: Aug 18, 2008 - 11:03am Plotted by: Juehnerhaus