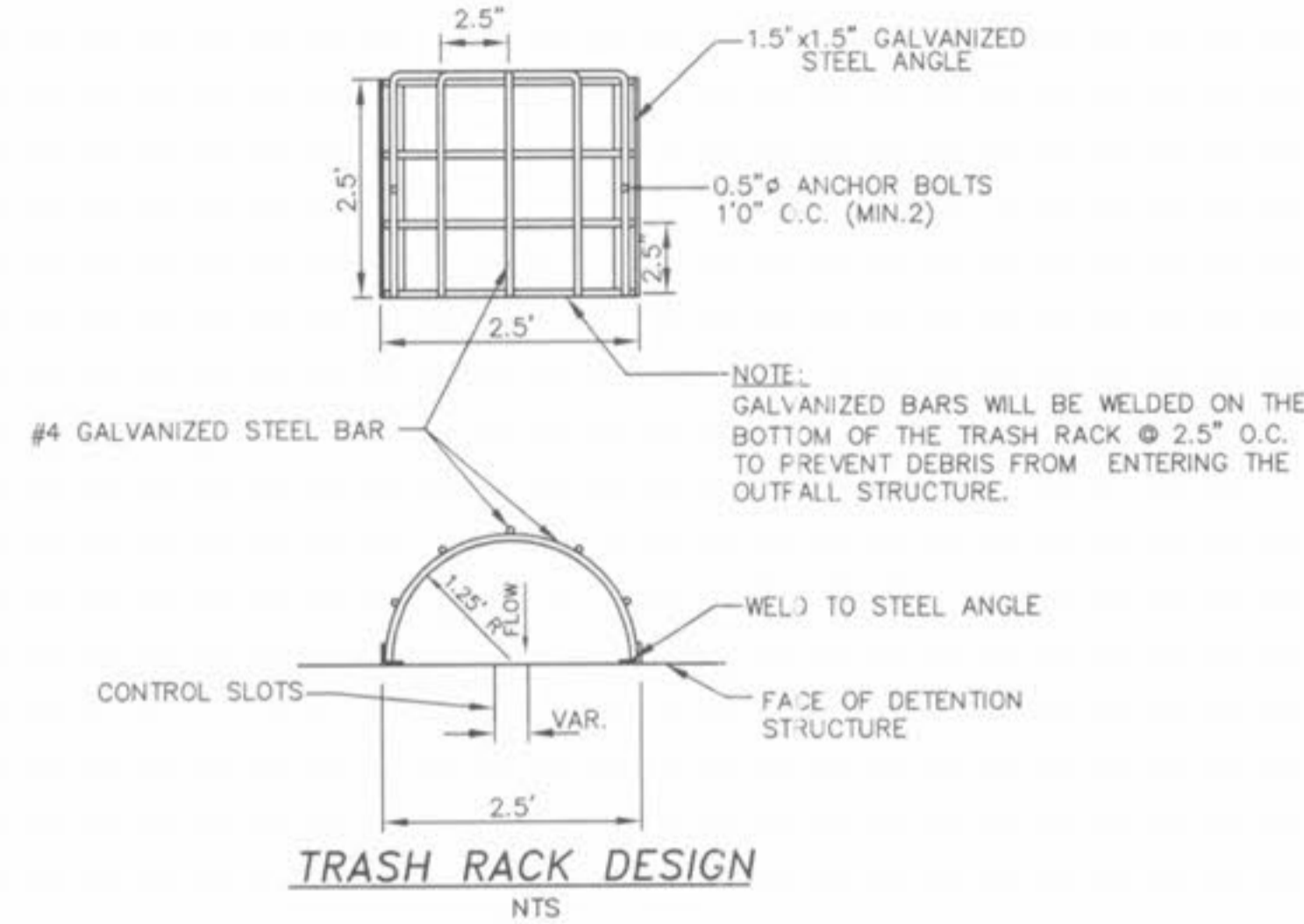
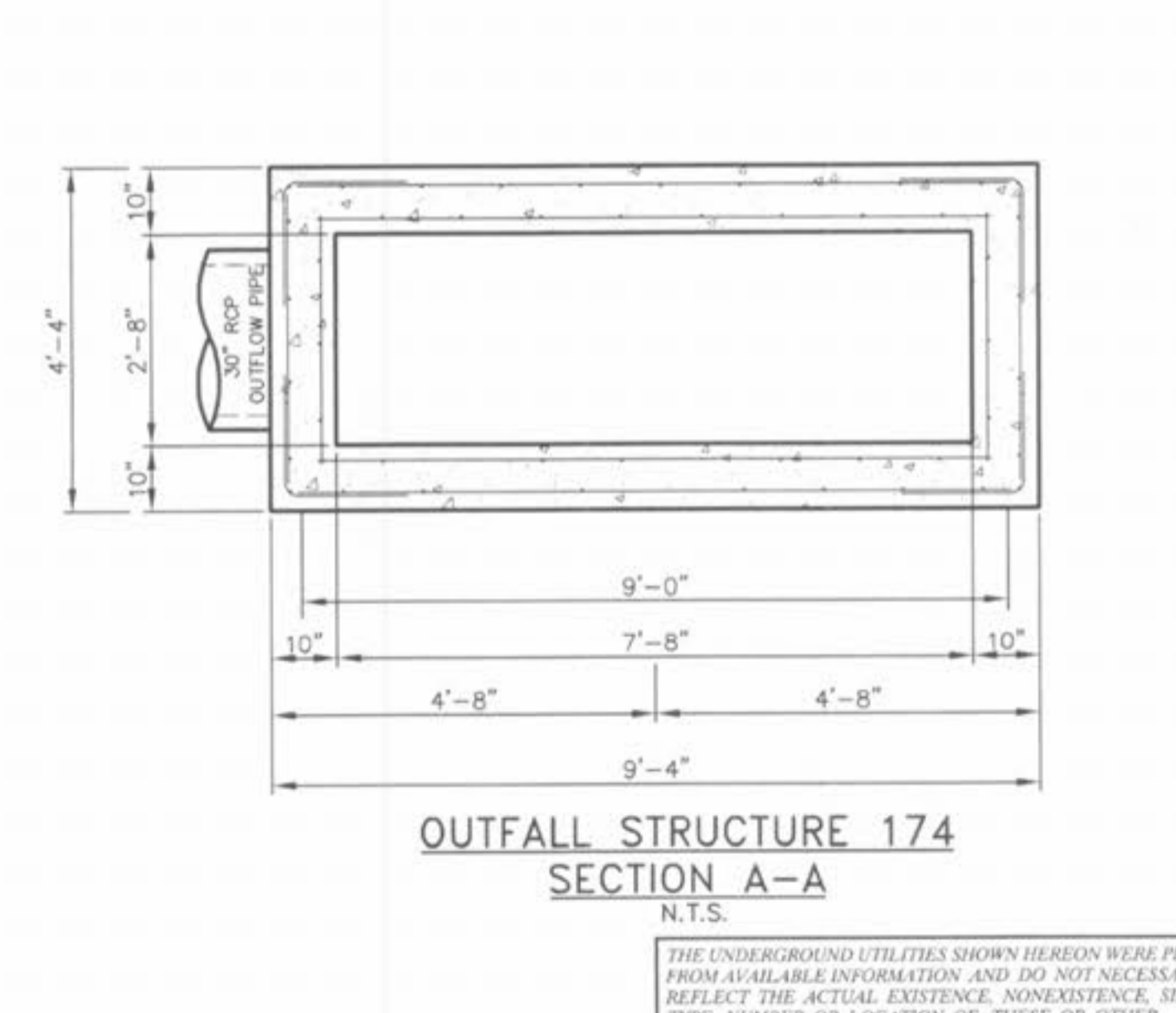
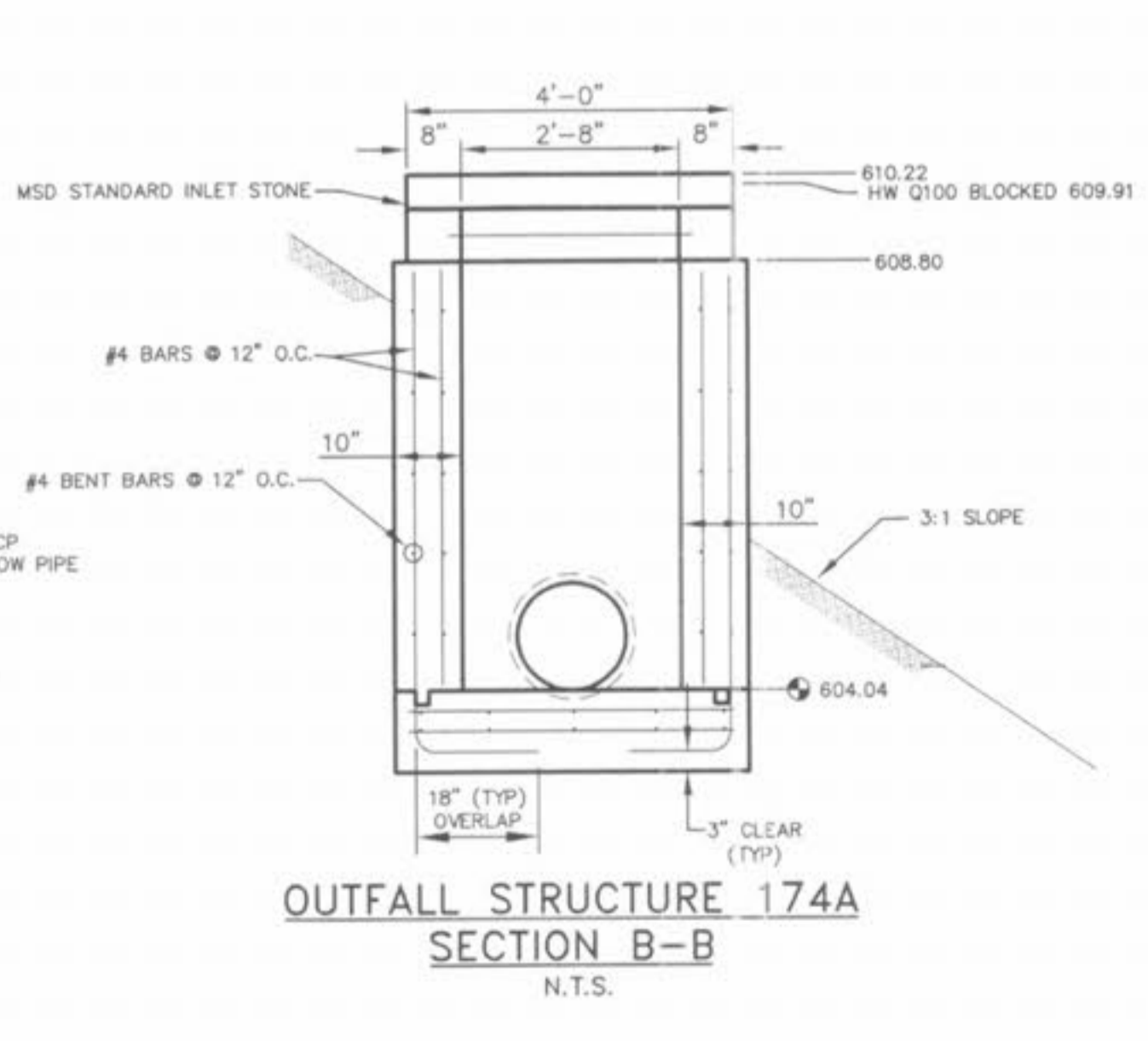
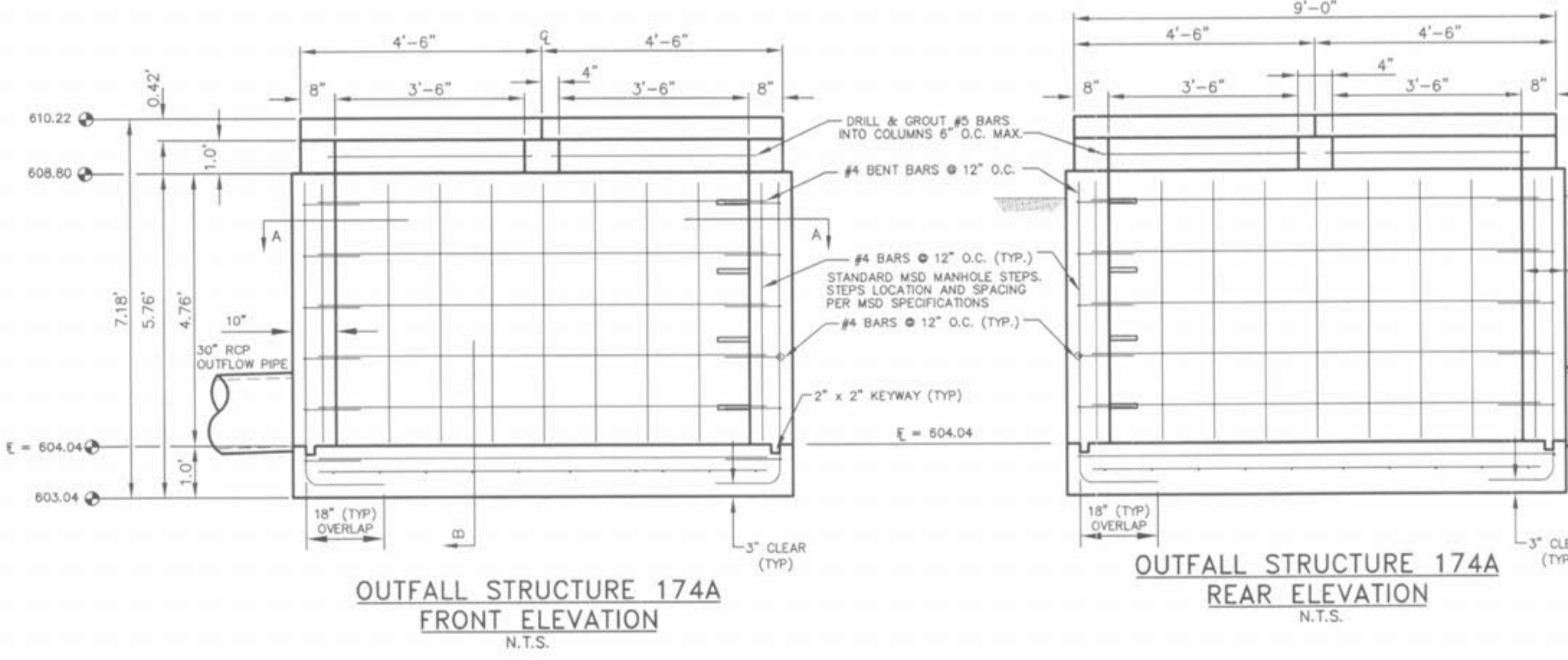
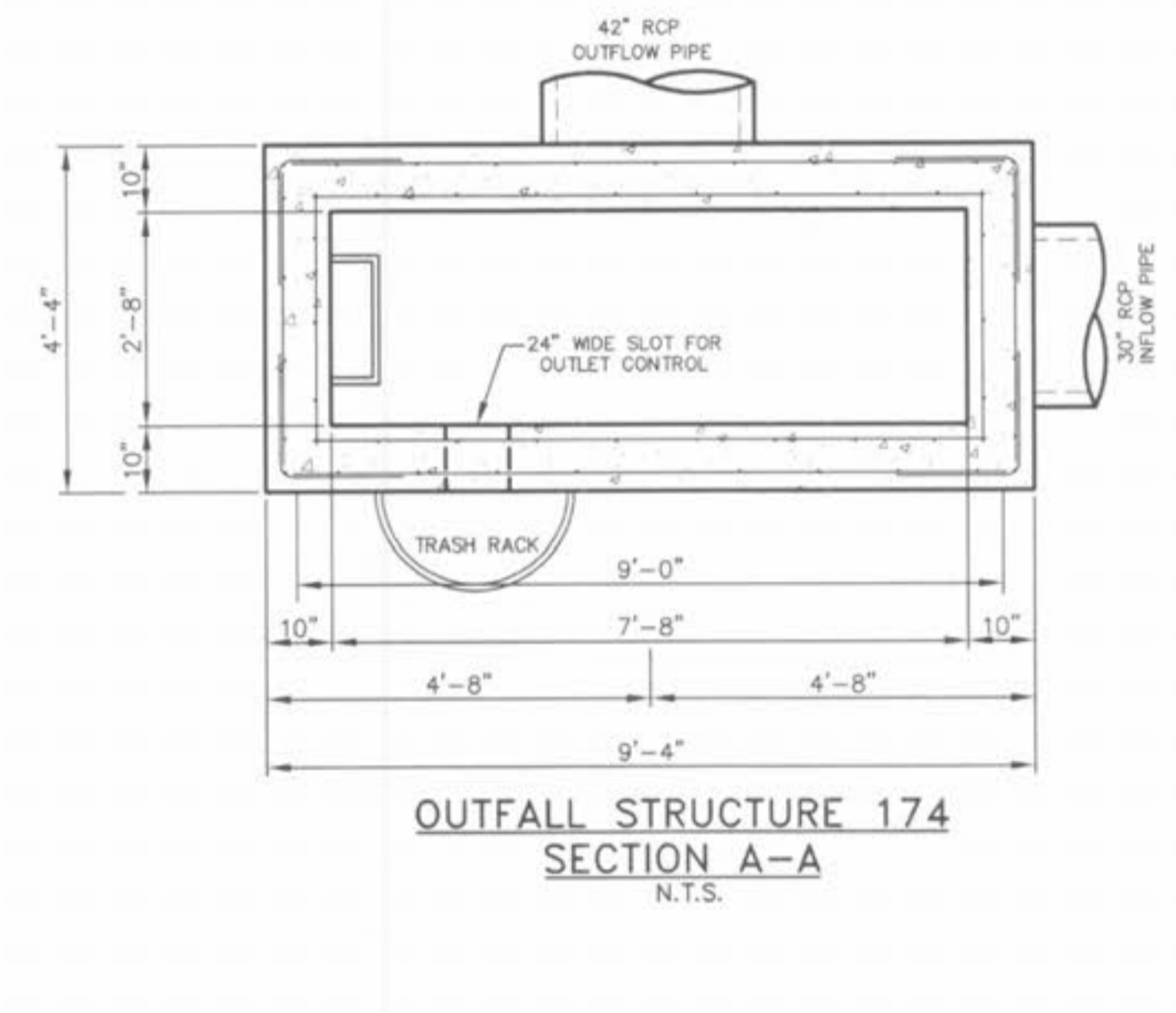
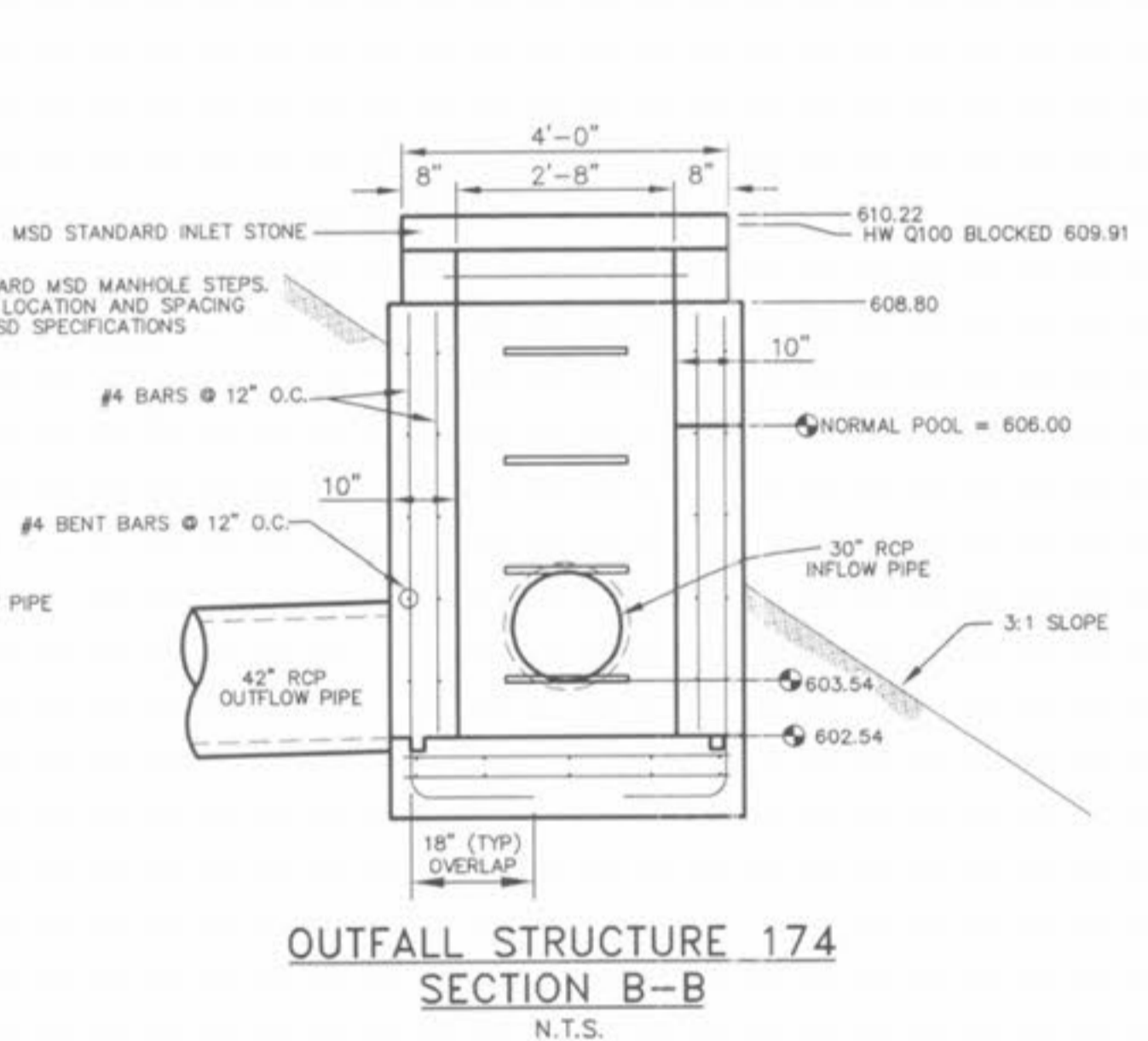
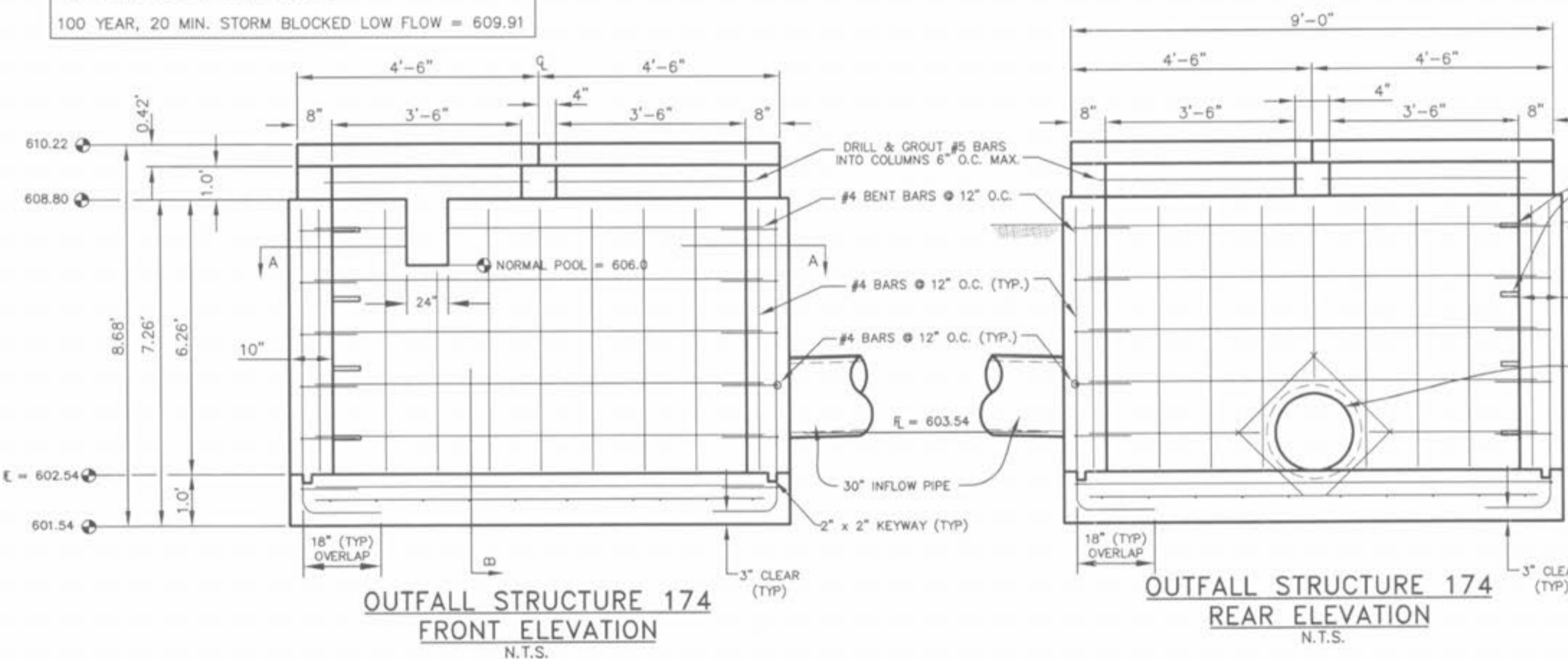


**OUTFALL STRUCTURE 174
DRAIN DETAIL**
N.T.S.

OUTFALL STRUCTURE #174 & 174A	
2 YEAR, 20 MIN. STORM	607.53
15 YEAR, 20 MIN. STORM	608.36
25 YEAR, 20 MIN. STORM	608.83
100 YEAR, 20 MIN. STORM	609.25
100 YEAR, 20 MIN. STORM BLOCKED LOW FLOW	= 609.91



- CONSTRUCTION NOTES:
1. CONCRETE FOR THE STRUCTURE SHALL BE "AIR ENTRAINED" AND CONTAIN AT LEAST 6 SACK CLASS "A" PORTLAND CEMENT PER CUBIC YARD. THE CONCRETE SHALL BE PLACED AT A SLUMP OF 4 INCHES ± 1/2 INCH. THE CONCRETE SHALL BE PROPORTIONED AND TRANSPORTED IN ACCORDANCE WITH ASTM C-94.
 2. REINFORCING STEEL SHALL CONFORM TO ASTM C-615-60 WITH DEFORMATIONS CONFORMING TO ASTM A-305 AND SHALL HAVE A MINIMUM COVER OF 2 INCHES EXCEPT FOR 3 INCHES WHERE CONCRETE IS POURED AGAINST EARTH.
 3. LAPS AND/OR SPLICES IN REINFORCING STEEL SHALL BE A MINIMUM OF 30 BAR DIAMETERS.
 4. KEYED JOINTS SHOWN ARE TO BE 2-INCH BY 2-INCH KEYED CONSTRUCTION JOINTS.
 5. FY = 60,000 PSI
 6. FC = 3,500 PSI
 7. ALL EXPOSED EDGES ARE TO HAVE A 3/4-INCH CHAMFER.
 8. CONTRACTOR TO PROVIDE FOR BYPASS OF STORMWATER DURING CONSTRUCTION OF STRUCTURE.
 9. SOIL COMPLEY TESTS SHALL BE OBTAINED BY THE SOILS ENGINEER AT SELECTED INTERVALS TO INSURE COMPLIANCE WITH SOILS SPECIFICATIONS.
 10. ALL SOIL SPECIFICATIONS SHALL BE DIRECTED BY SOILS ENGINEER.
 11. 2" CLEAR (TYP) TO CLOSEST REBAR TO CONCRETE SURFACE, UNLESS NOTED OTHERWISE.



THE UNDERGROUND UTILITIES SHOWN HEREON WERE PLOTTED FROM AVAILABLE INFORMATION AND DO NOT NECESSARILY REFLECT THE ACTUAL EXISTENCE, NONEXISTENCE, SIZE, TYPE, NUMBER OR LOCATION OF THESE OR OTHER UTILITIES. THE GENERAL CONTRACTOR SHALL BE RESPONSIBLE FOR VERIFYING THE ACTUAL LOCATION OF ALL UNDERGROUND UTILITIES, SHOWN OR NOT SHOWN, AND SAID UTILITIES SHALL BE LOCATED IN THE FIELD PRIOR TO ANY GRADING, EXCAVATION OR CONSTRUCTION OF IMPROVEMENTS. THESE PROVISIONS SHALL IN NO WAY ABSOLVE ANY PARTY FROM COMPLYING WITH THE UNDERGROUND FACILITY SAFETY AND DAMAGE PREVENTION ACT, CHAPTER 316, RSMo.

ISSUE	REMARKS/DATE
10	CITY COMMENTS 02/15/06
11	CITY COMMENTS 02/15/06
3	DCSD COMMENT 02/29/05
4	DCSD COMMENT 02/29/05
5	DCSD AND CITY COMMENTS 11-14-05
6	CITY COMMENTS 11-22-05
7	CITY COMMENTS 12-30-05
8	WATER DISTRICT #2 COMMENTS 01-17-06
9	DEVELOPER REVISIONS 01-24-06

PREPARED FOR:
STERLING CO.
 ENGINEERS & SURVEYORS
 9055 NEW BAUMGARTNER ROAD
 ST. LOUIS, MISSOURI 63129
 (314) 487-0440 FAX 487-8944
 E-Mail: Sterling@sterling-eng-survey.com

PROJECT: **COUNTRYSHIRE**

SHEET TITLE: **OUTFALL STRUCTURE DETAILS**

NO. **02** OF **12** SHEET **311**

M.S.D. **10.3**

DATE: **02/15/06**

Drawing name: K:\0212311 RHODES TRACT.dwg IMPROVEMENTS\2311D.DWG Plotted on: Feb 15, 2006 - 6:52pm Plotted by: lgreen