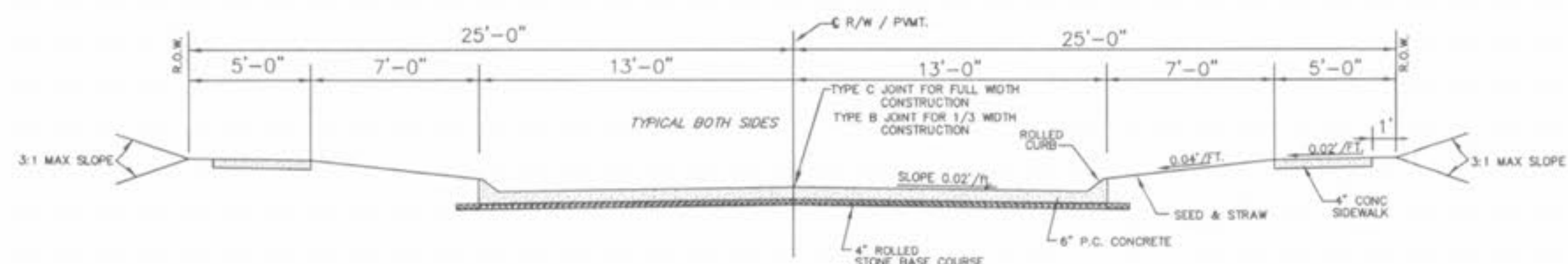
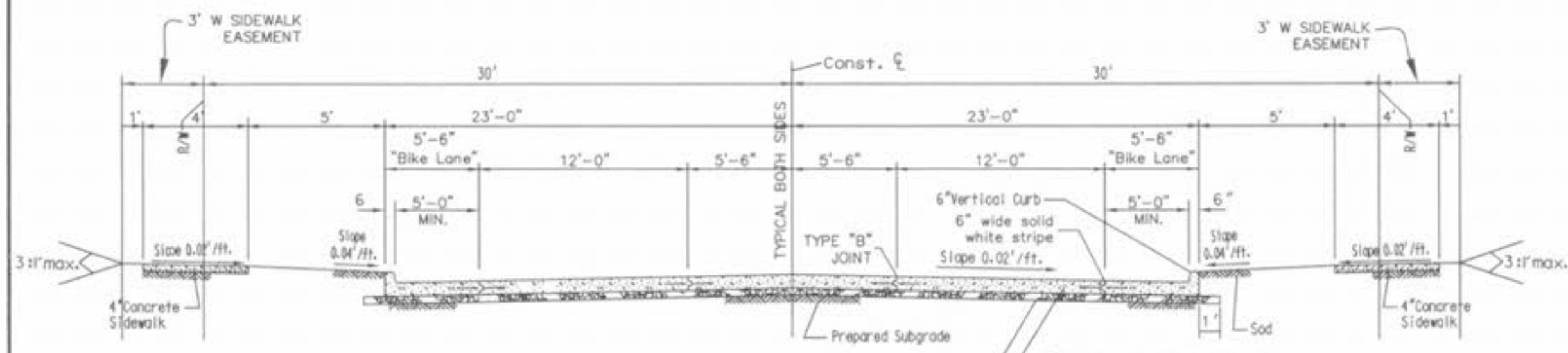


Drawing name: K:\021231_RHODES TRACT\Draw\IMPROVEMENTS\3110DETAILS.dwg Plotted on: Feb 15, 2006 - 5:41pm Plotted by: lgrean



TYPICAL PAVEMENT SECTION

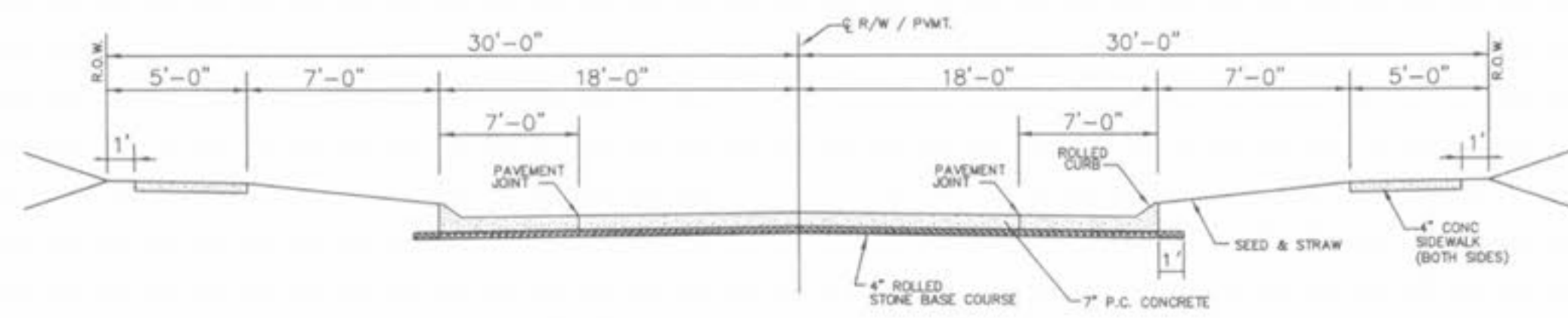
N.T.S.



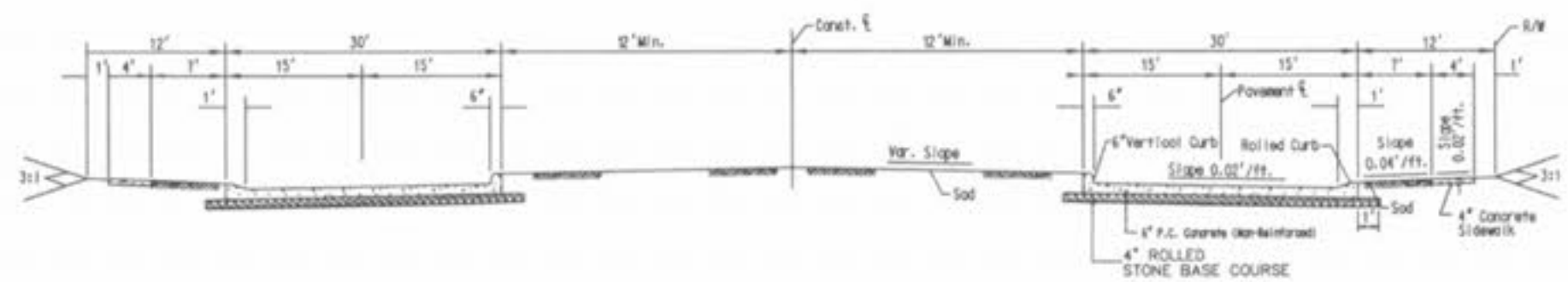
**TYPICAL PAVEMENT SECTION
PAUL RENAUD BLVD.**

N.T.S.
RIGHT-OF-WAY TO BE PUBLIC

NOTE: 6" VERT. CURB TO BE USED AT ALL INTERSECTION ROUNDINGS ALONG PAUL RENAUD BLVD. WITH 6" TRANSITION TO 3" ROLLED CURB ON SIDE STREETS.

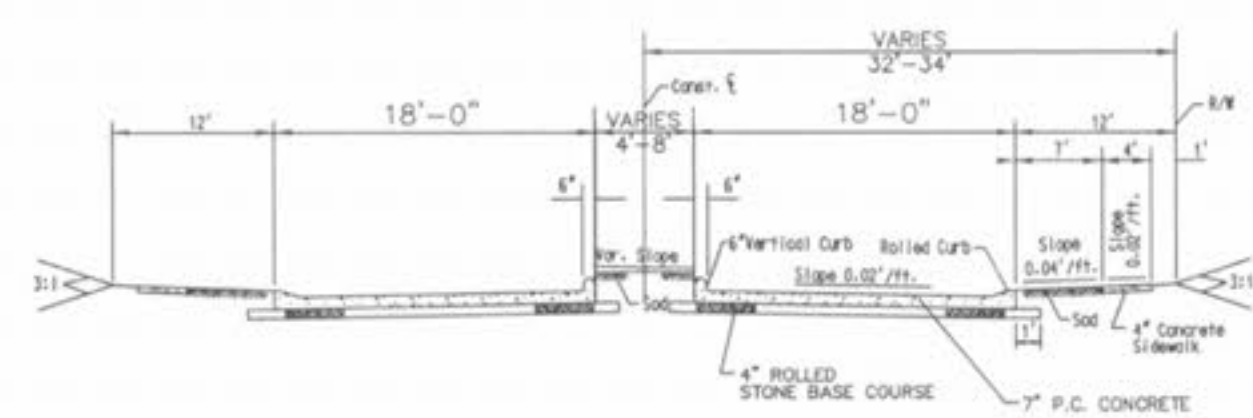


**TYPICAL PAVEMENT SECTION
COUNTRYSHIRE DRIVE**



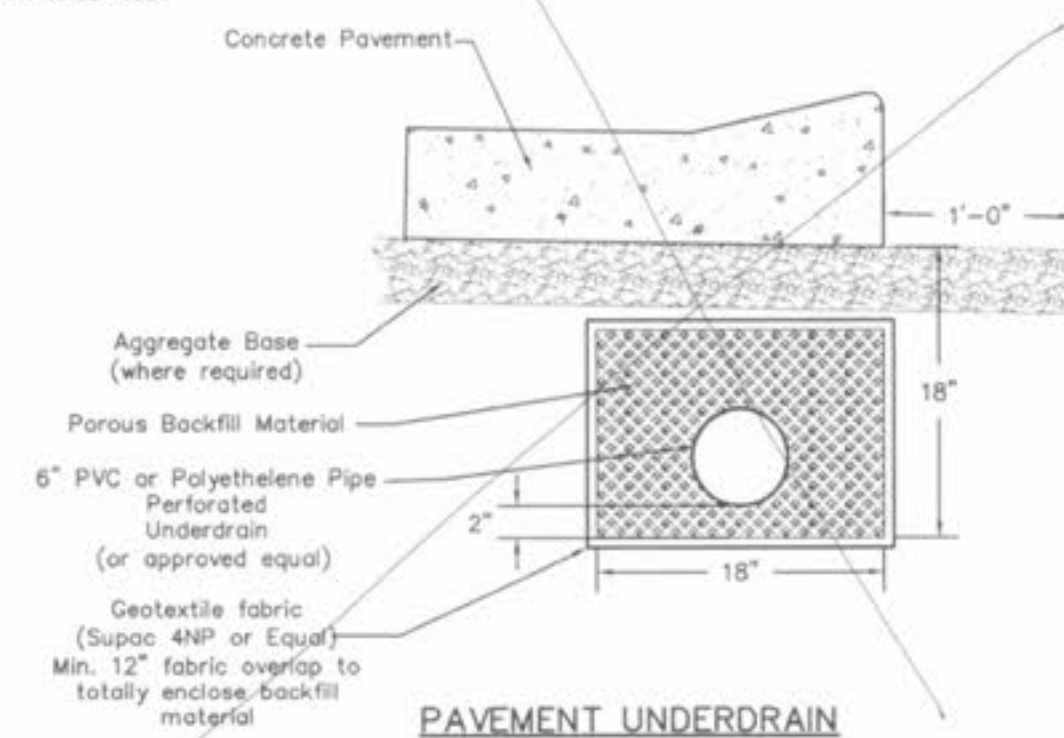
**TYPICAL SECTION ELONGATED
CUL-DE-SAC W/ISLAND**

N.T.S.
RIGHT-OF-WAY TO BE PUBLIC



**COUNTRYSHIRE DRIVE
ENTRANCE DETAIL SECTION**

N.T.S.
RIGHT-OF-WAY TO BE PUBLIC



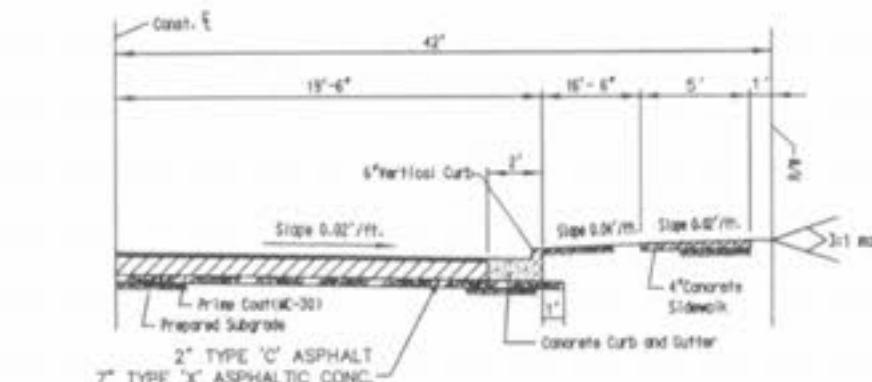
PAVEMENT UNDERDRAIN

NOTE: Underdrain to be placed at all low points and extended 20' min. on each side of inlet.



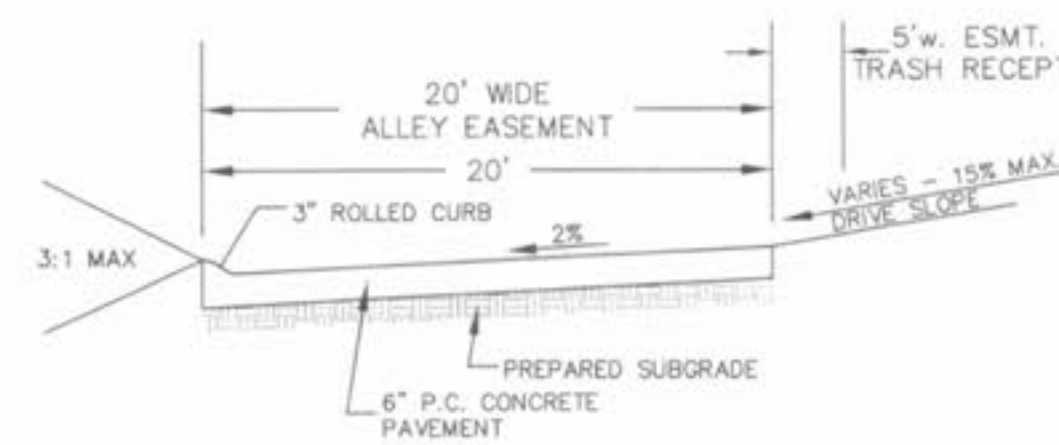
SOMMERS ROAD TEMP. SECTION

N.T.S.
RIGHT-OF-WAY TO BE PUBLIC



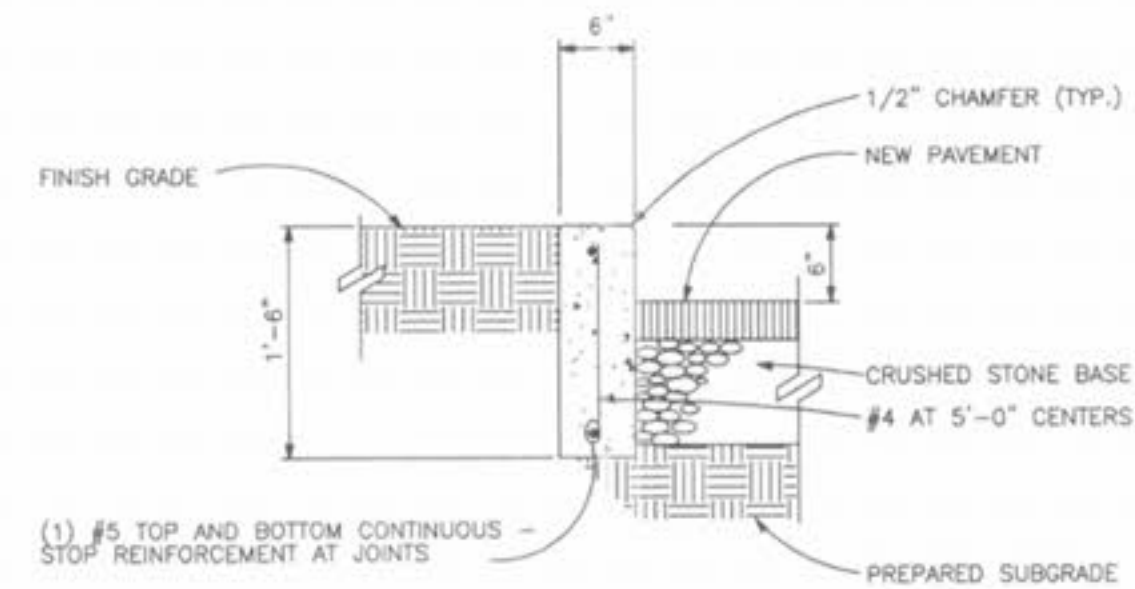
SOMMERS ROAD FUTURE SECTION

N.T.S.
RIGHT-OF-WAY TO BE PUBLIC



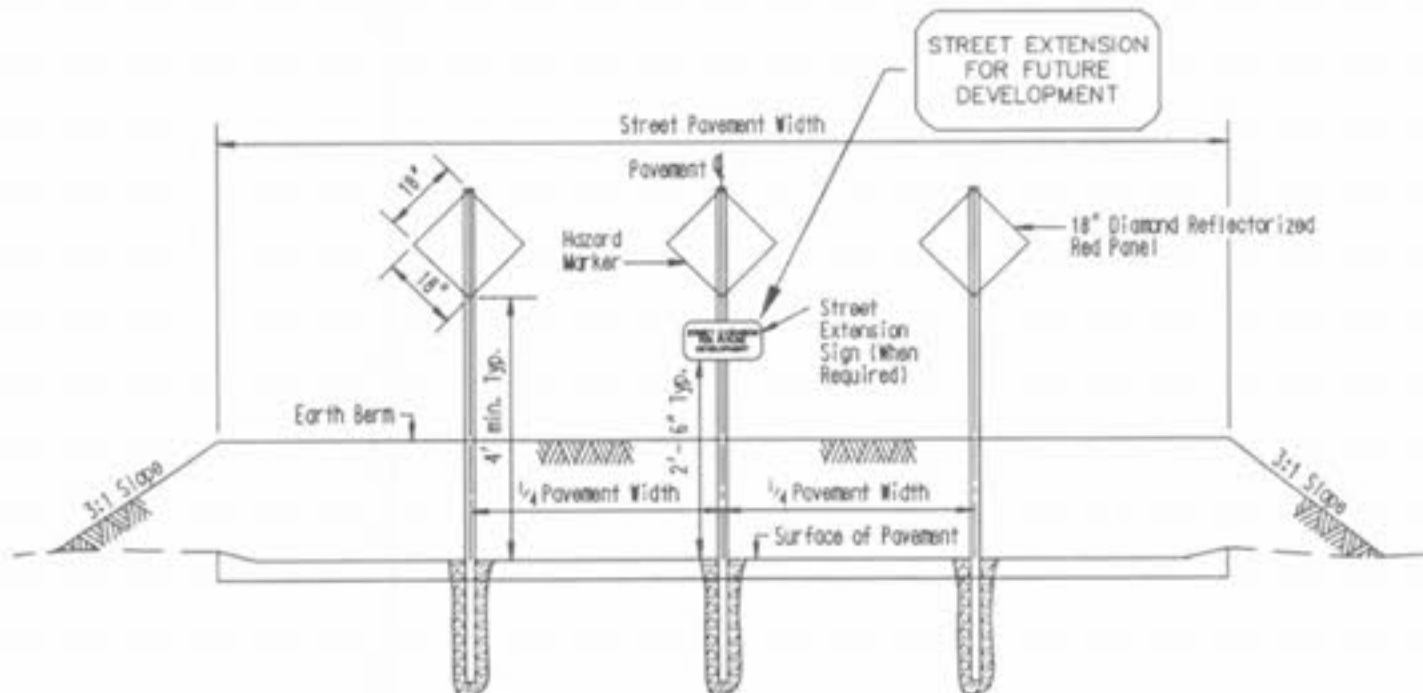
TYPICAL ALLEY SECTION

N.T.S.



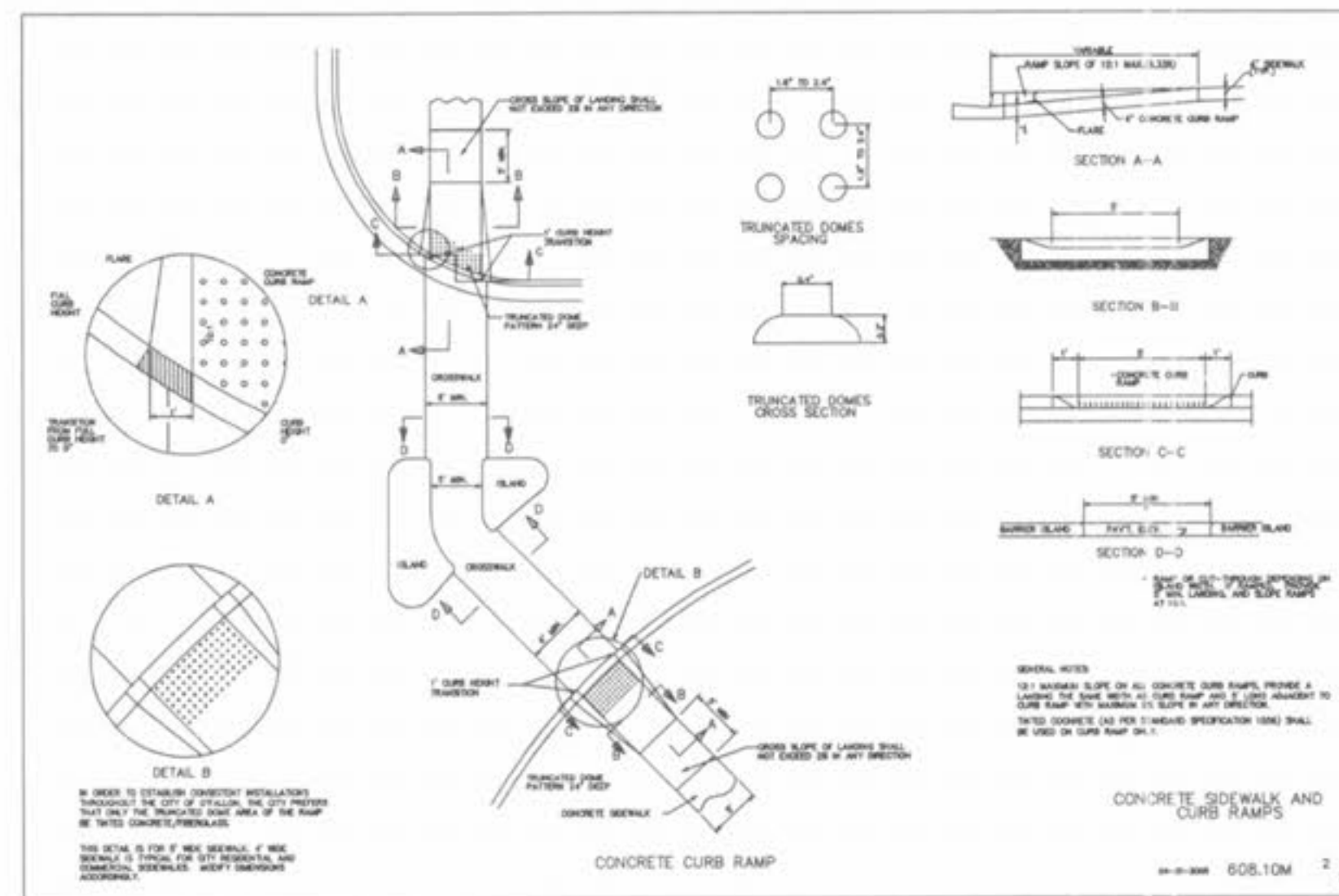
CONCRETE CURB DETAIL

NOT TO SCALE

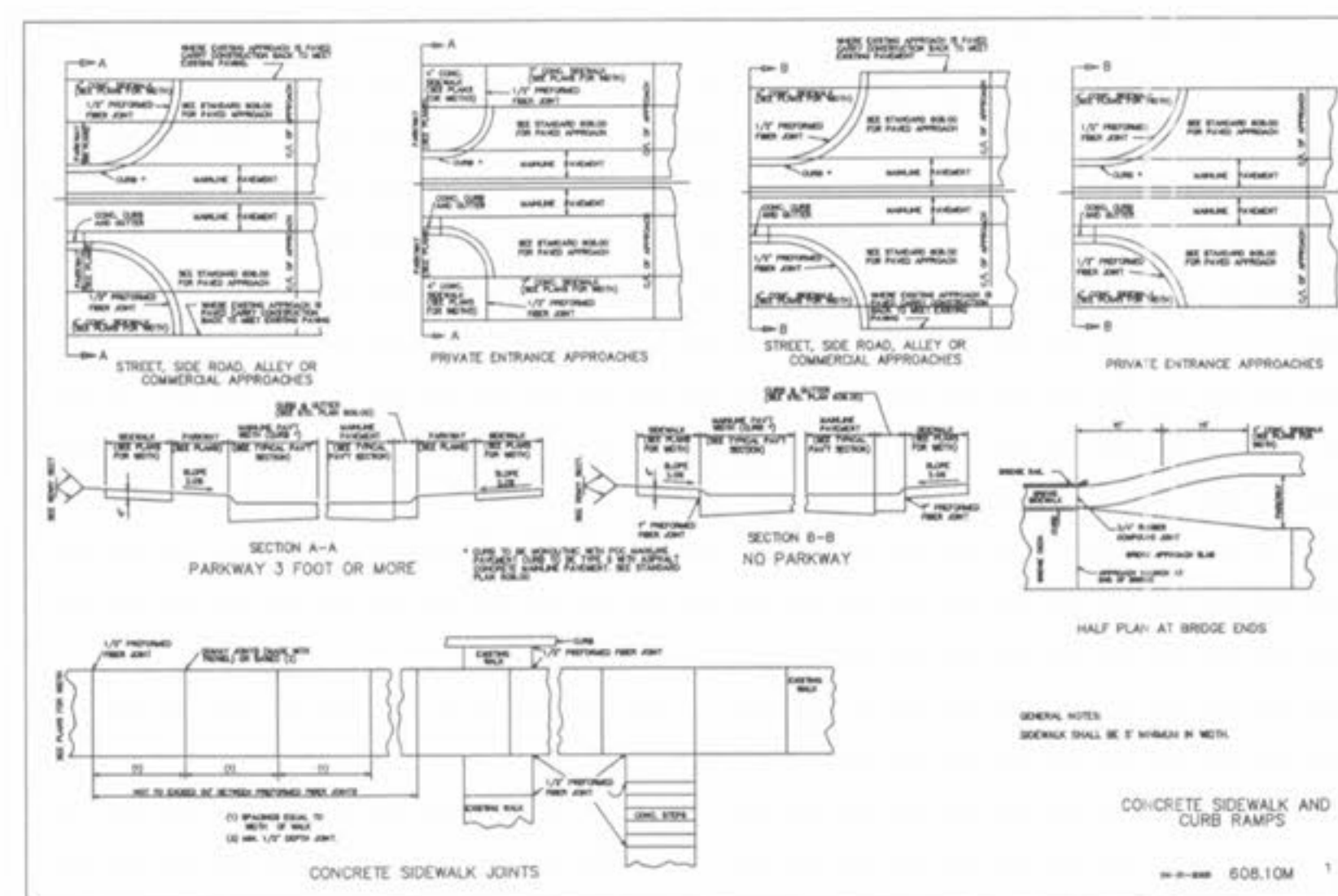


STREET EXTENSION SIGN DETAIL

N.T.S.

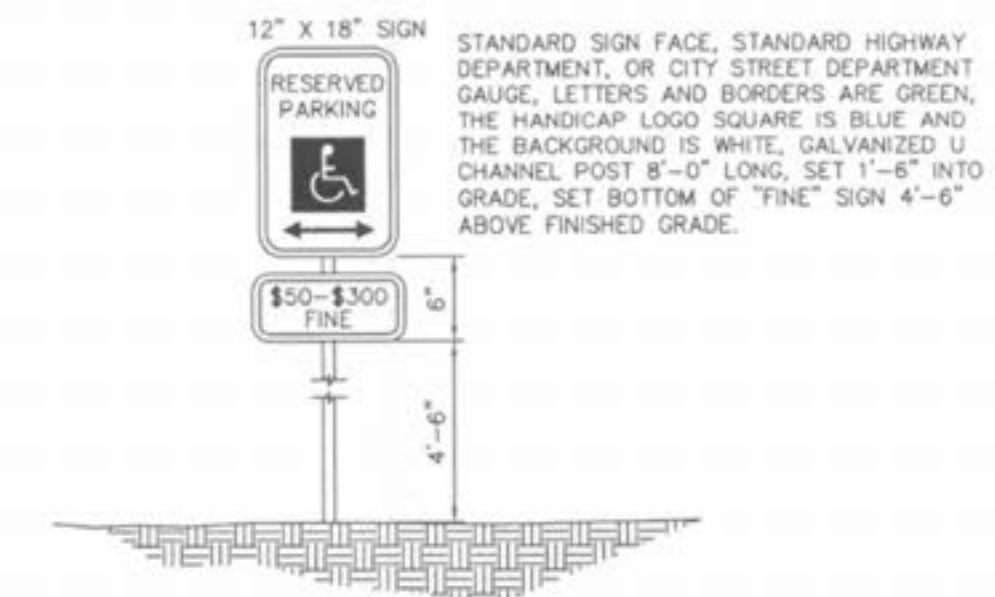


CONCRETE SIDEWALK AND CURB RAMP



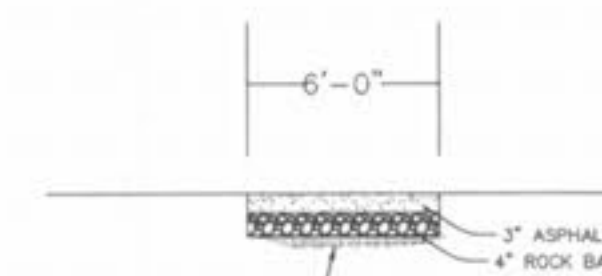
CONCRETE SIDEWALK JOINTS

N.T.S.



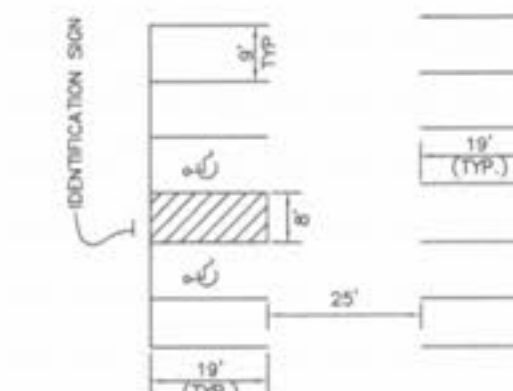
HANDICAP PARKING SIGN

NOT TO SCALE



**TYPICAL SECTION
PAVED WALKING TRAIL**

N.T.S.



TYPICAL PARKING LAYOUT

N.T.S.

ISSUE	REMARKS/DATE
10	CITY COMMENTS/02/03/06
11	CITY COMMENTS/02/15/06
3	DCSD COMMENTS/03/29/05
4	DCSD COMMENTS/10/15/05
5	DCSD AND CITY COMMENTS/11/14/05
6	CITY COMMENTS/11/22/05
7	CITY COMMENTS/12/30/05
8	WATER DISTRICT #2 COMMENTS/01/17/06
9	DEVELOPER REVISIONS/01/24/06

PREPARED FOR:
CMB RHODES, L.L.C.
5091 NEW BAUMGARTNER ROAD
ST. LOUIS, MISSOURI 63129
(314) 487-6717



THE **STERLING** CO.
ENGINEERS & SURVEYORS
5055 NEW BAUMGARTNER ROAD
ST. LOUIS, MISSOURI 63129
(314) 487-0440 FAX 487-8944
E-Mail: Sterling@sterling-eng-sur.com

DRAWN:	LG
DESIGNED:	SCM
CHECKED:	GM

PROJECT:	COUNTRYSHIRE
SHEET TITLE:	PAVEMENT DETAILS

NO	02	12	311
M.S.D.			
PH			
DIGITAL FILE LOCATION	K:\021231_RHODES TRACT\Draw\IMPROVEMENTS\3110DETAILS.dwg		
DATE	02/15/06		