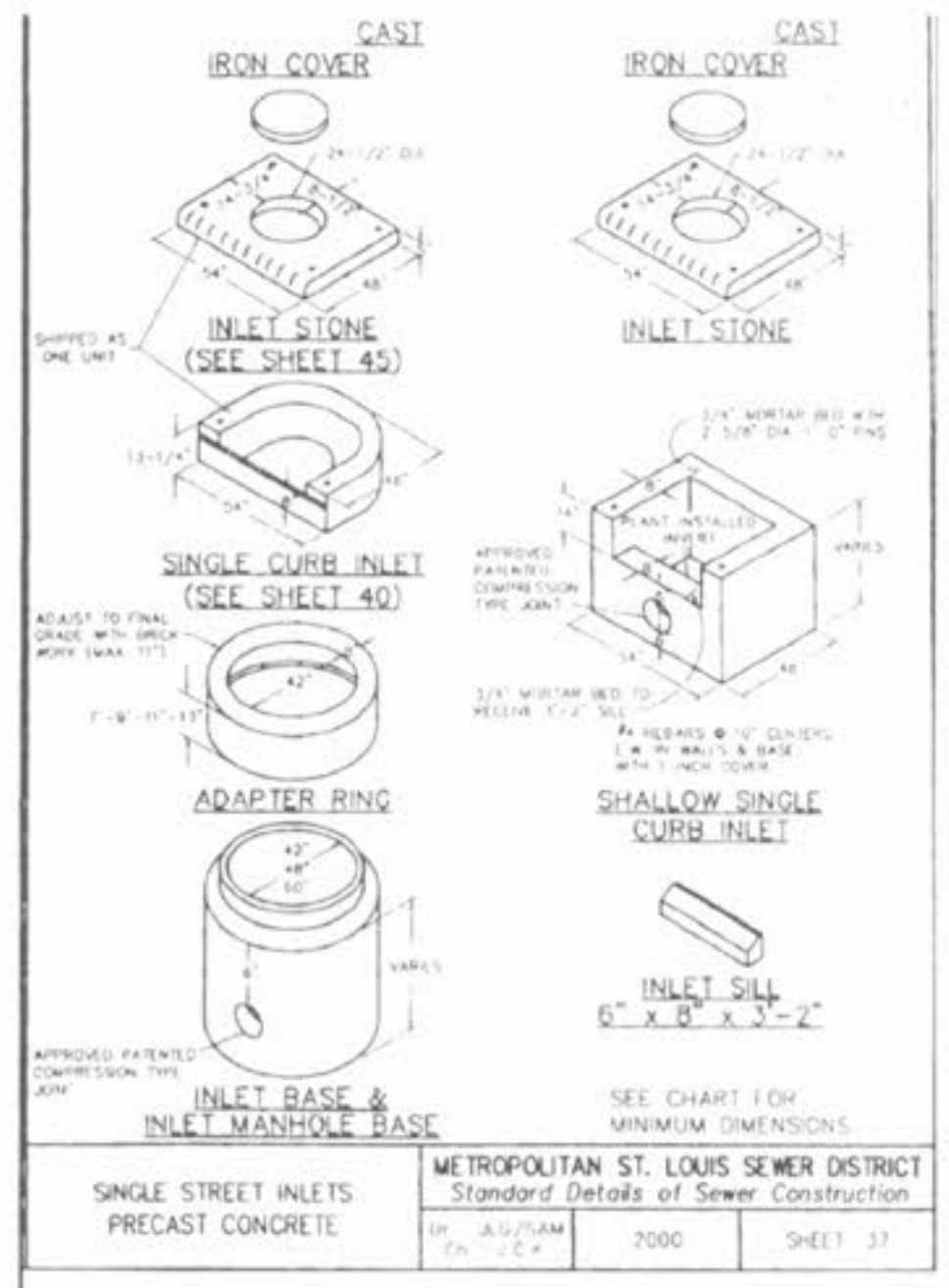
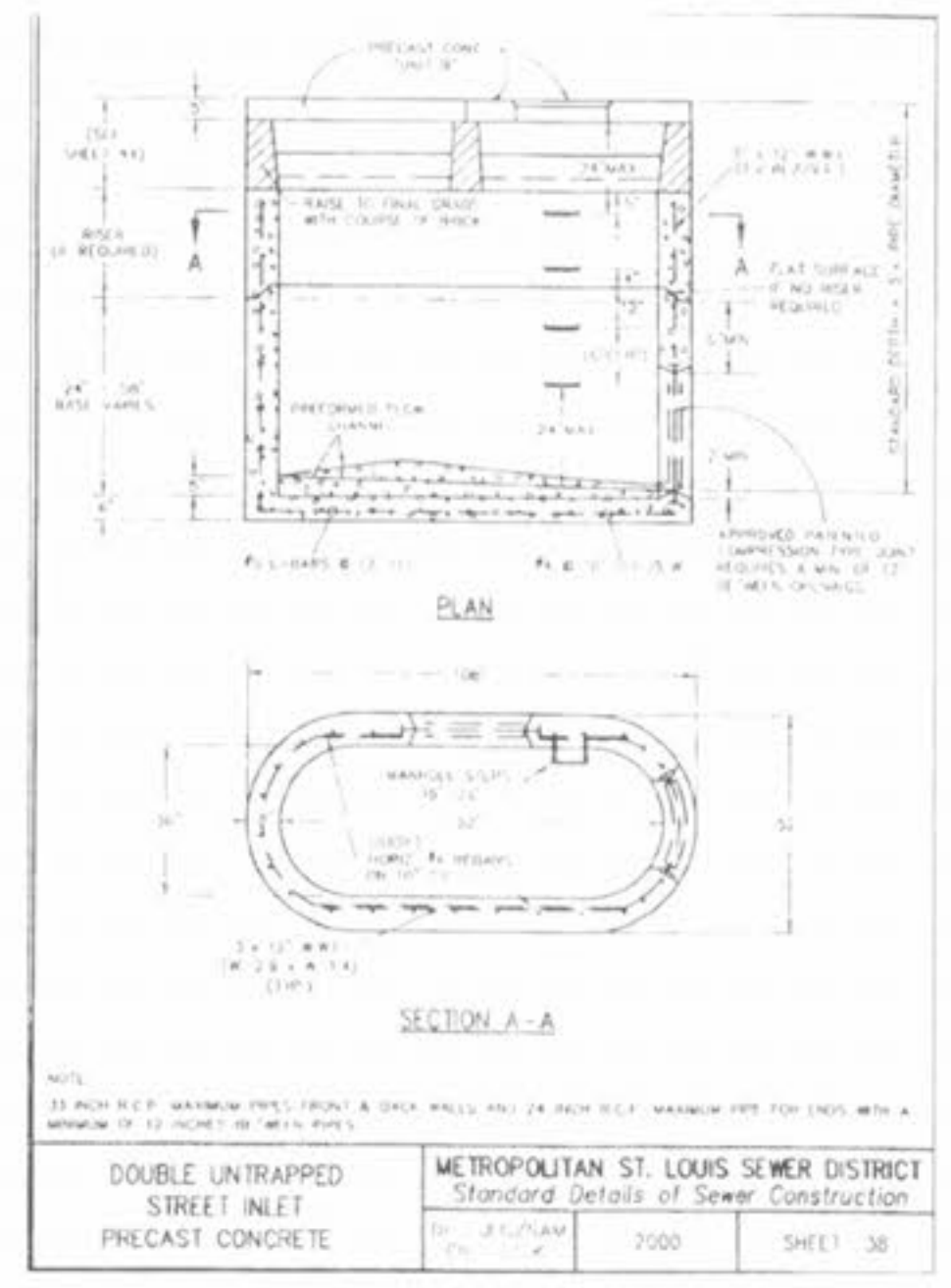


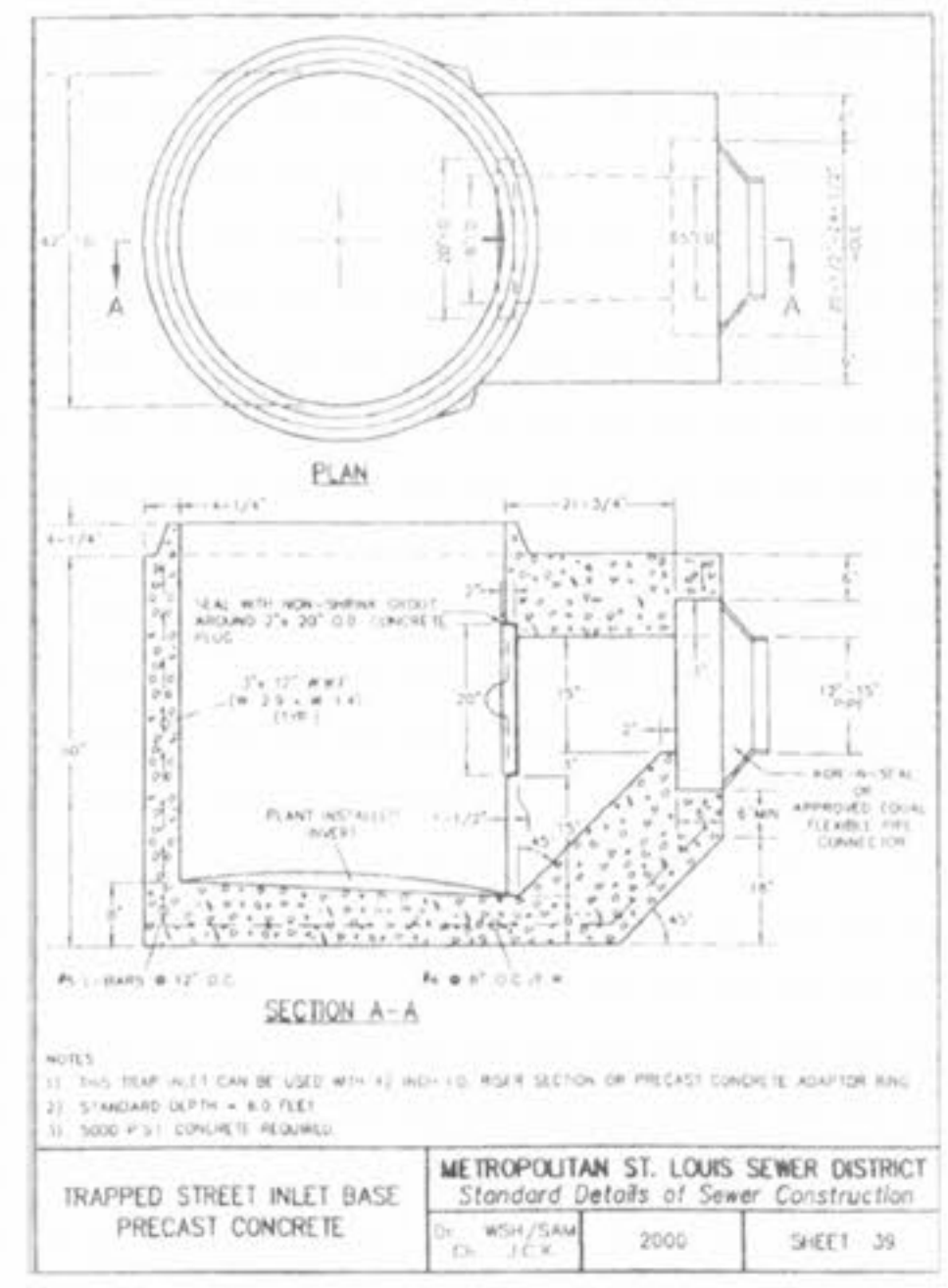
Drawing name: K:\2012\2011 - RHOODES TRACT\4-4\MSD\CONCRETE\33102DETAILS.dwg Plotted on: Feb. 15, 2006 - 9:35am Plotted by: lgm



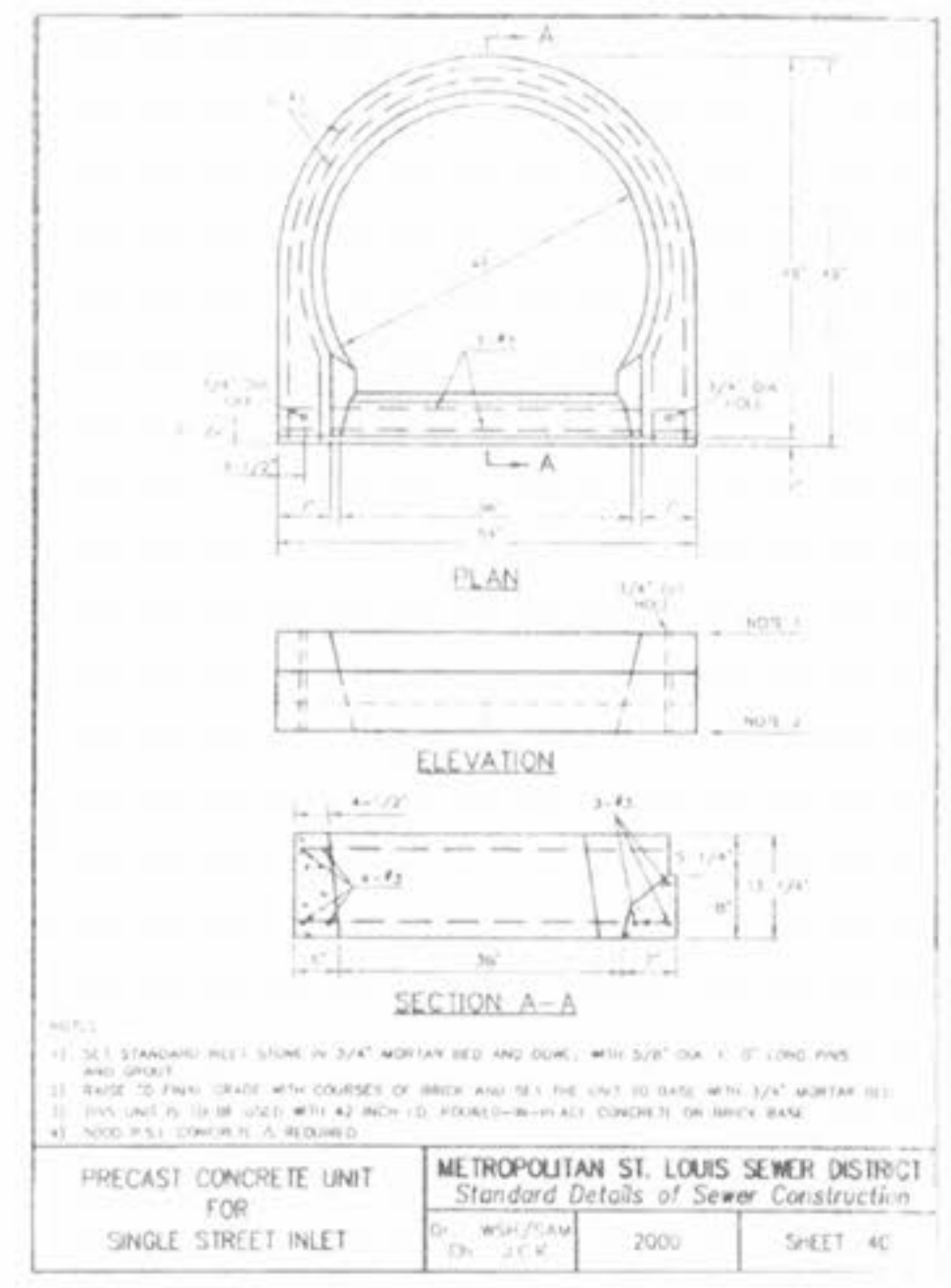
<p>SINGLE STREET INLETS PRECAST CONCRETE</p>	<p>METROPOLITAN ST. LOUIS SEWER DISTRICT Standard Details of Sewer Construction</p> <p>DR. 40/27/AM CR. 11-4</p> <p>2000</p> <p>SHEET 37</p>
---	---



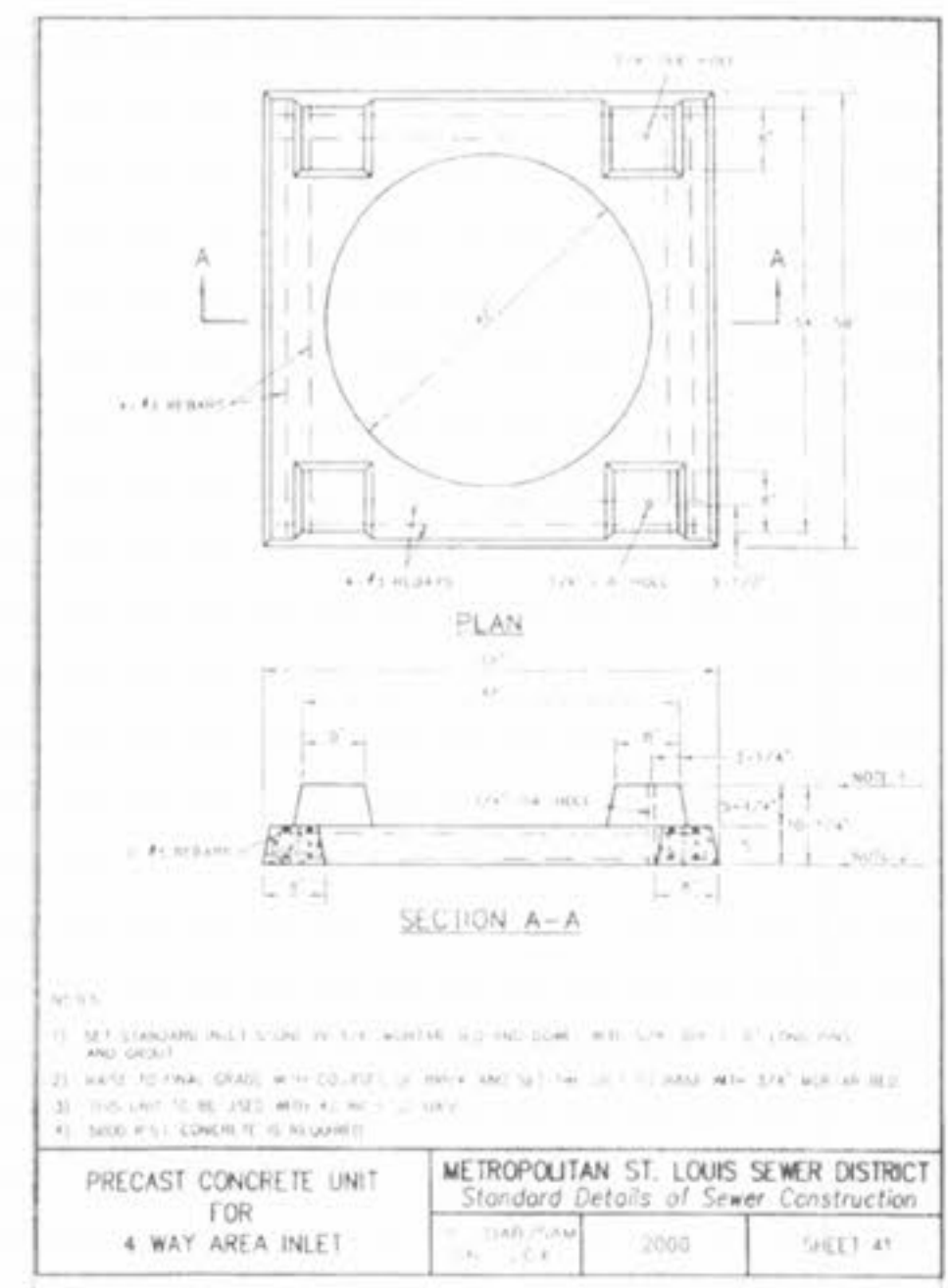
<p>DOUBLE UNTRAPPED STREET INLET PRECAST CONCRETE</p>	<p>METROPOLITAN ST. LOUIS SEWER DISTRICT Standard Details of Sewer Construction</p> <p>DR. 40/27/AM CR. 11-4</p> <p>2000</p> <p>SHEET 38</p>
--	---



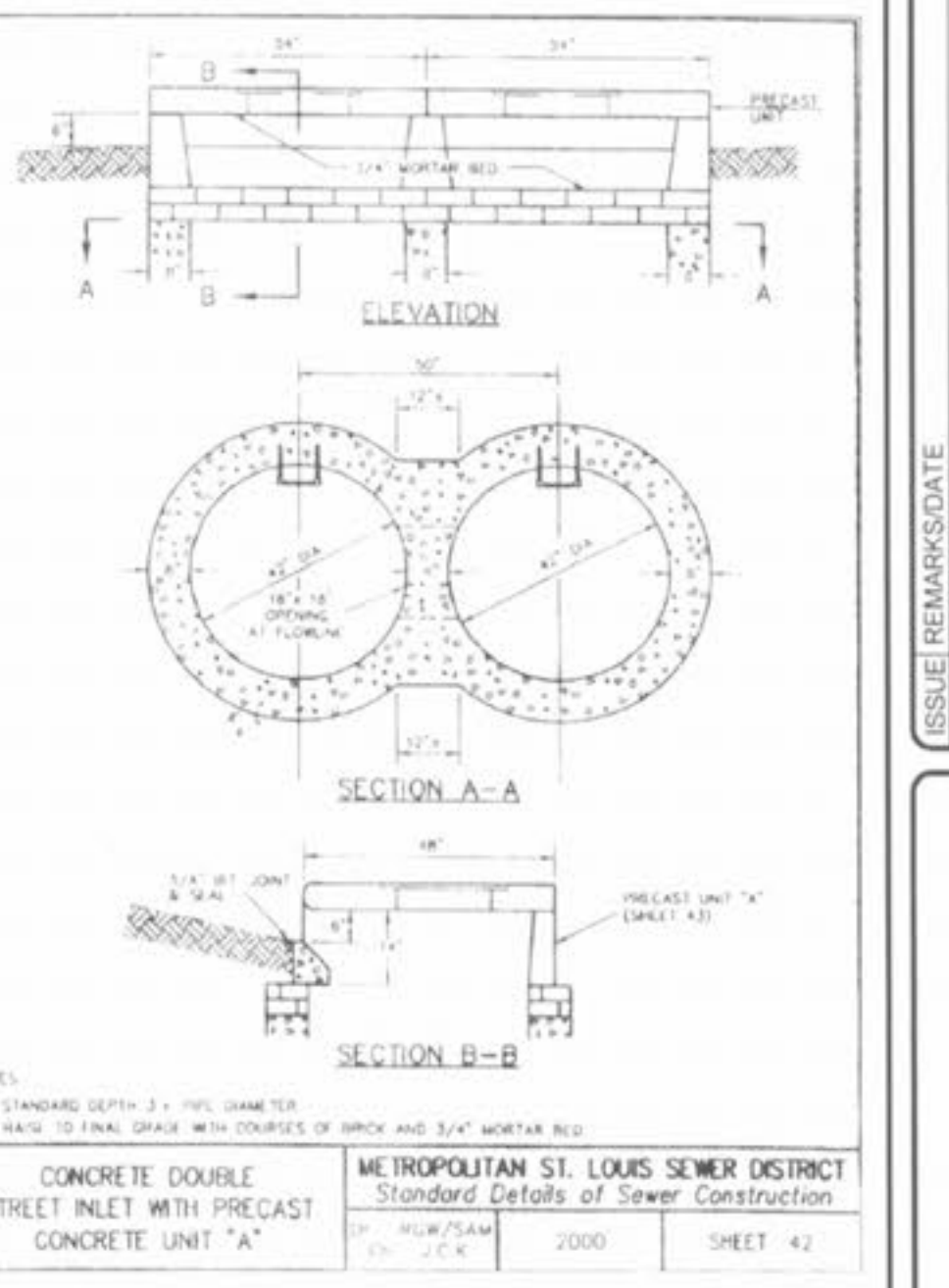
<p>TRAPPED STREET INLET BASE PRECAST CONCRETE</p>	<p>METROPOLITAN ST. LOUIS SEWER DISTRICT Standard Details of Sewer Construction</p> <p>DR. 40/27/AM CR. 11-4</p> <p>2000</p> <p>SHEET 39</p>
--	---



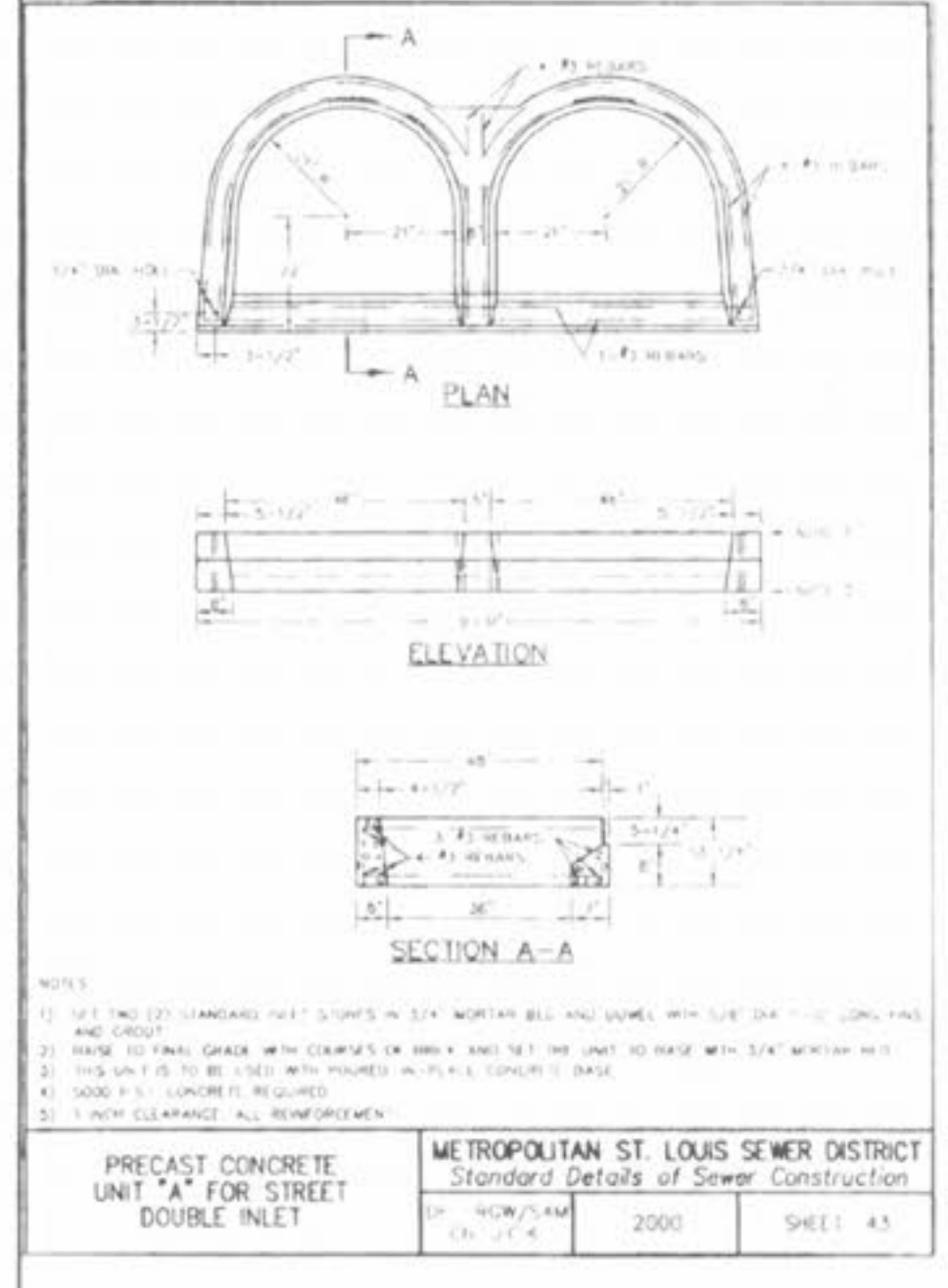
<p>PRECAST CONCRETE UNIT FOR SINGLE STREET INLET</p>	<p>METROPOLITAN ST. LOUIS SEWER DISTRICT Standard Details of Sewer Construction</p> <p>DR. 40/27/AM CR. 11-4</p> <p>2000</p> <p>SHEET 40</p>
---	---



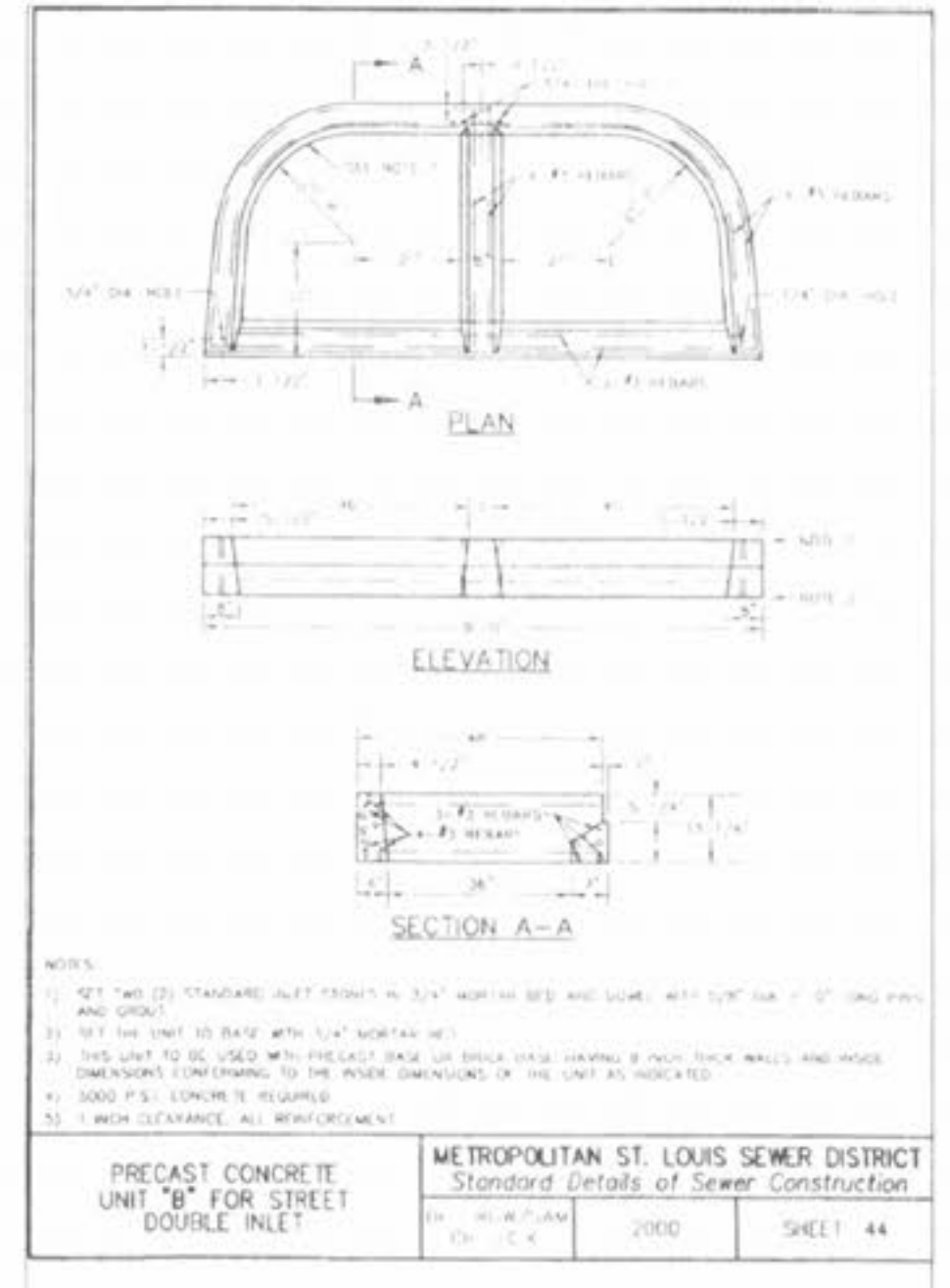
<p>PRECAST CONCRETE UNIT FOR 4 WAY AREA INLET</p>	<p>METROPOLITAN ST. LOUIS SEWER DISTRICT Standard Details of Sewer Construction</p> <p>DR. 40/27/AM CR. 11-4</p> <p>2000</p> <p>SHEET 41</p>
--	---



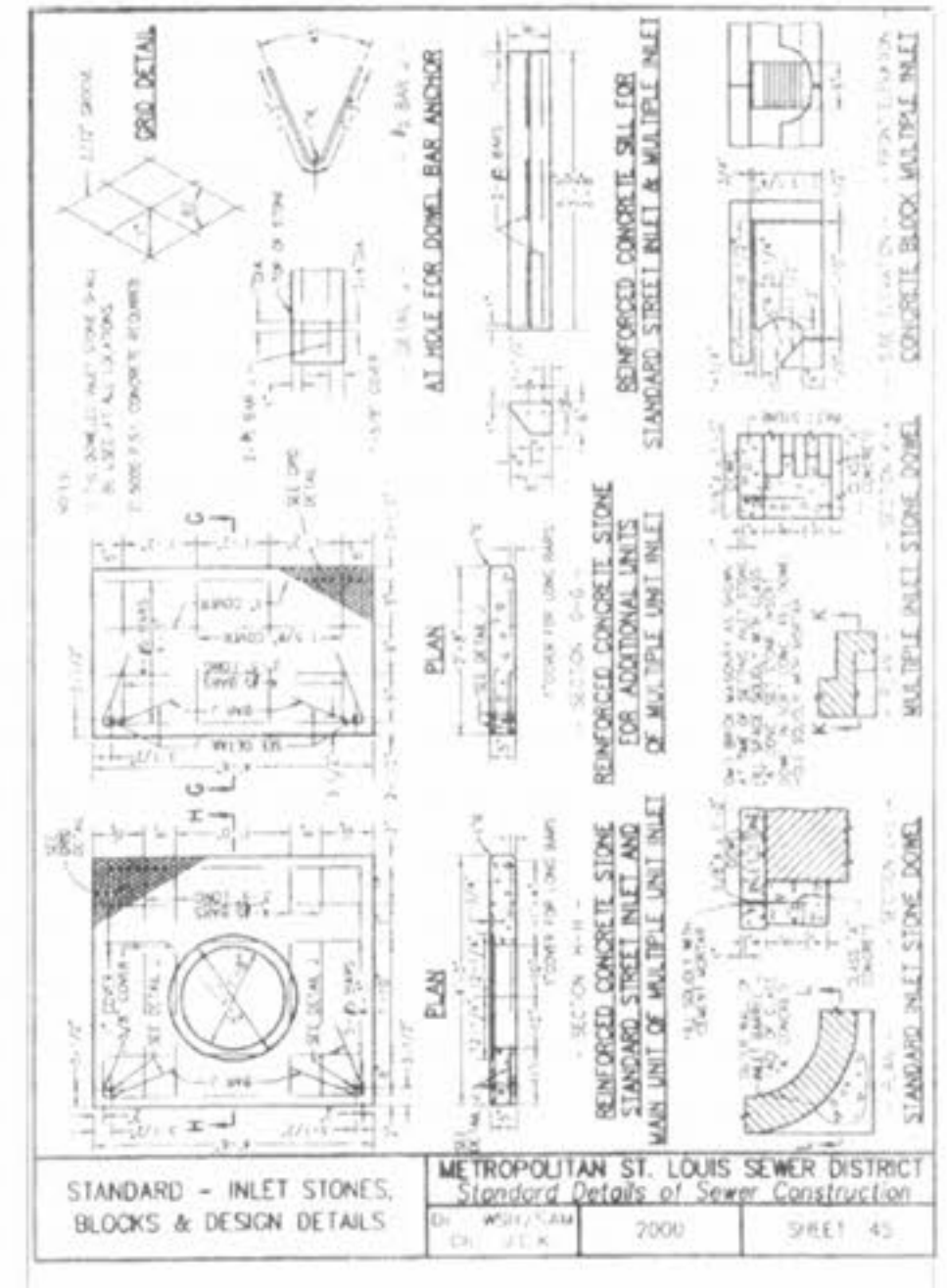
<p>CONCRETE DOUBLE STREET INLET WITH PRECAST CONCRETE UNIT "A"</p>	<p>METROPOLITAN ST. LOUIS SEWER DISTRICT Standard Details of Sewer Construction</p> <p>DR. 40/27/AM CR. 11-4</p> <p>2000</p> <p>SHEET 42</p>
---	---



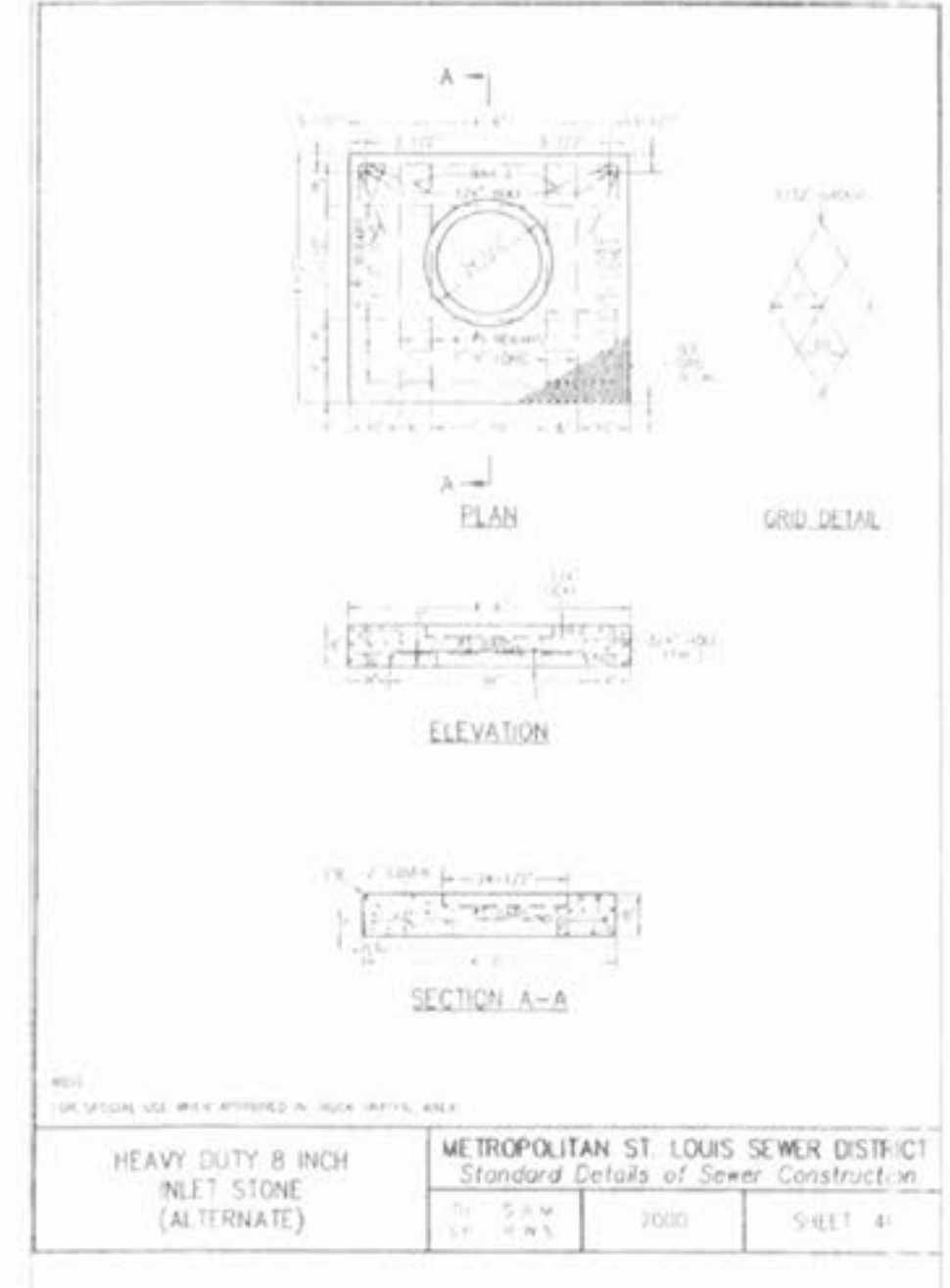
<p>PRECAST CONCRETE UNIT "A" FOR STREET DOUBLE INLET</p>	<p>METROPOLITAN ST. LOUIS SEWER DISTRICT Standard Details of Sewer Construction</p> <p>DR. 40/27/AM CR. 11-4</p> <p>2000</p> <p>SHEET 43</p>
---	---



<p>PRECAST CONCRETE UNIT "B" FOR STREET DOUBLE INLET</p>	<p>METROPOLITAN ST. LOUIS SEWER DISTRICT Standard Details of Sewer Construction</p> <p>DR. 40/27/AM CR. 11-4</p> <p>2000</p> <p>SHEET 44</p>
---	---



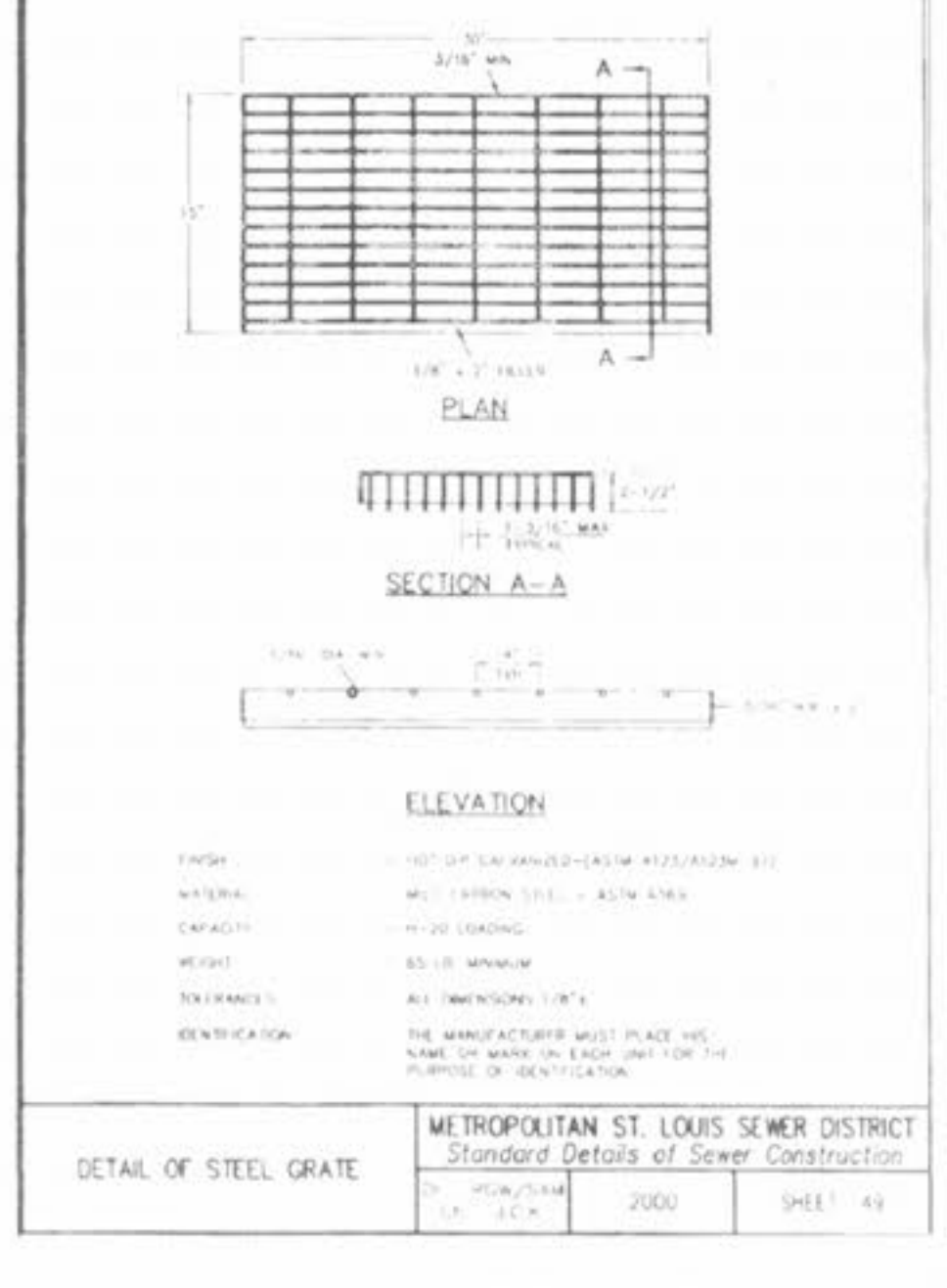
<p>STANDARD - INLET STONES, BLOCKS & DESIGN DETAILS</p>	<p>METROPOLITAN ST. LOUIS SEWER DISTRICT Standard Details of Sewer Construction</p> <p>DR. 40/27/AM CR. 11-4</p> <p>2000</p> <p>SHEET 45</p>
--	---



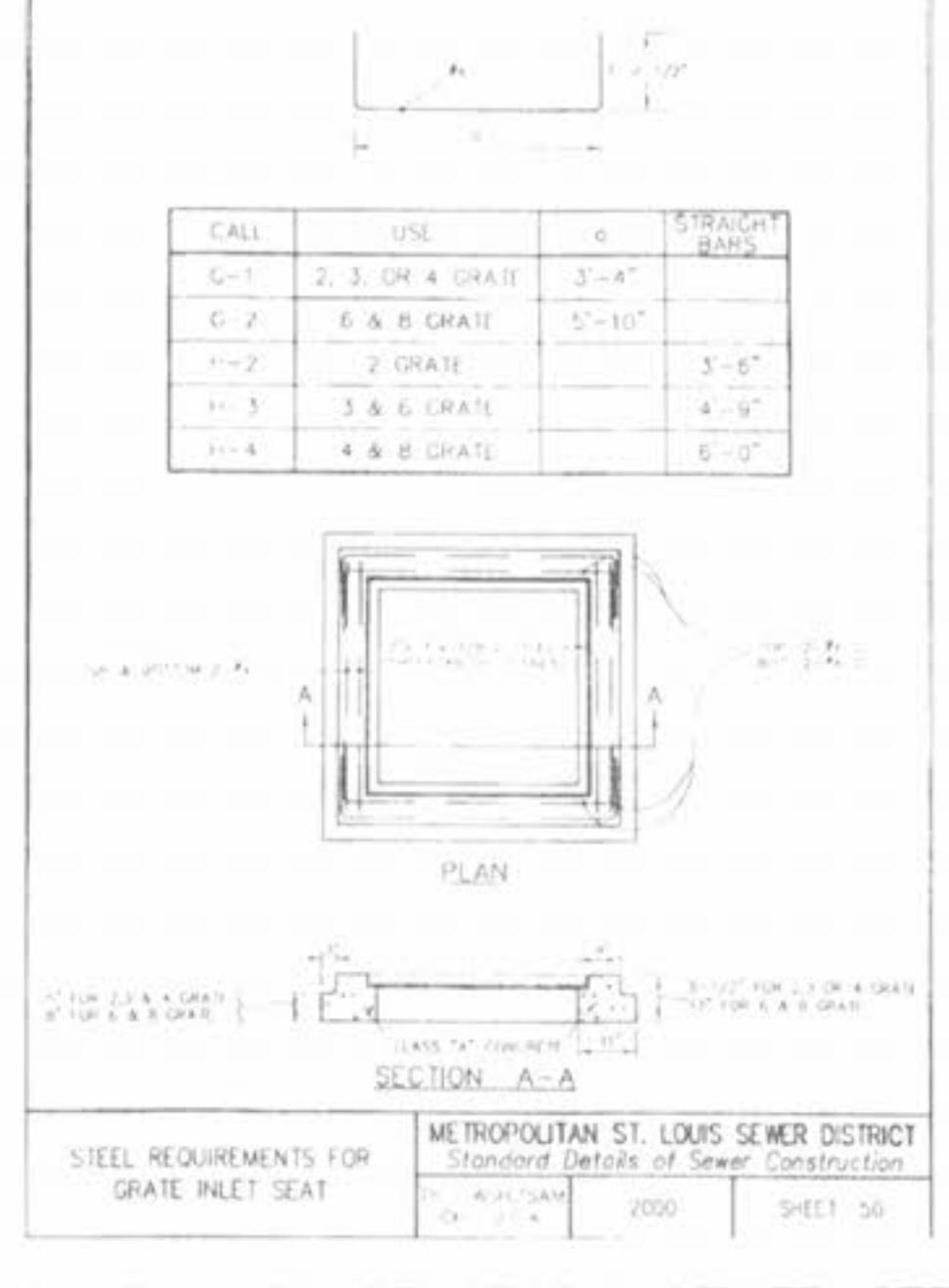
<p>HEAVY DUTY 8 INCH INLET STONE (ALTERNATE)</p>	<p>METROPOLITAN ST. LOUIS SEWER DISTRICT Standard Details of Sewer Construction</p> <p>DR. 40/27/AM CR. 11-4</p> <p>2000</p> <p>SHEET 46</p>
---	---



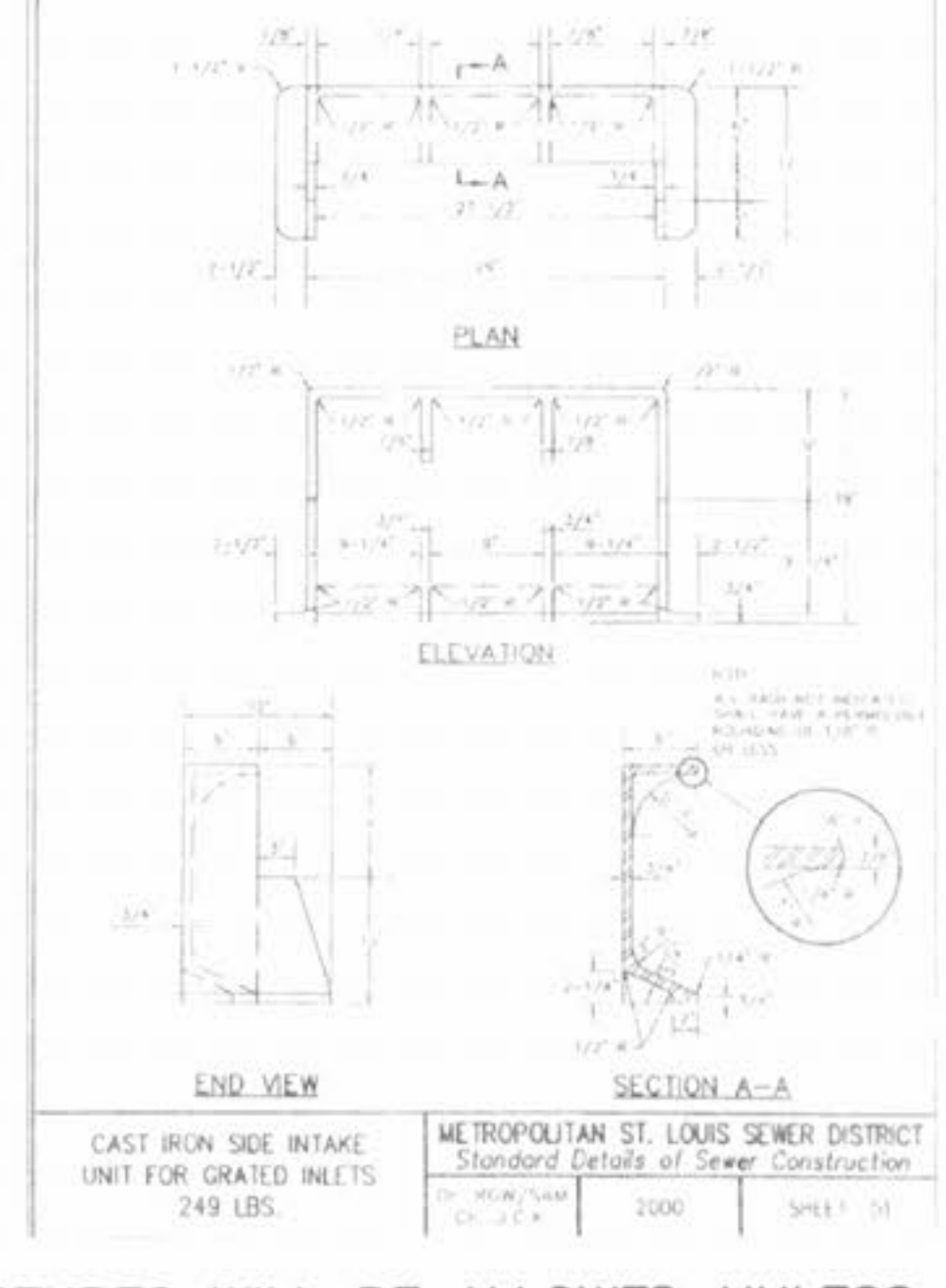
<p>DETAILS OF INLET FRAME AND GRATES</p>	<p>METROPOLITAN ST. LOUIS SEWER DISTRICT Standard Details of Sewer Construction</p> <p>DR. 40/27/AM CR. 11-4</p> <p>2000</p> <p>SHEET 48</p>
---	---



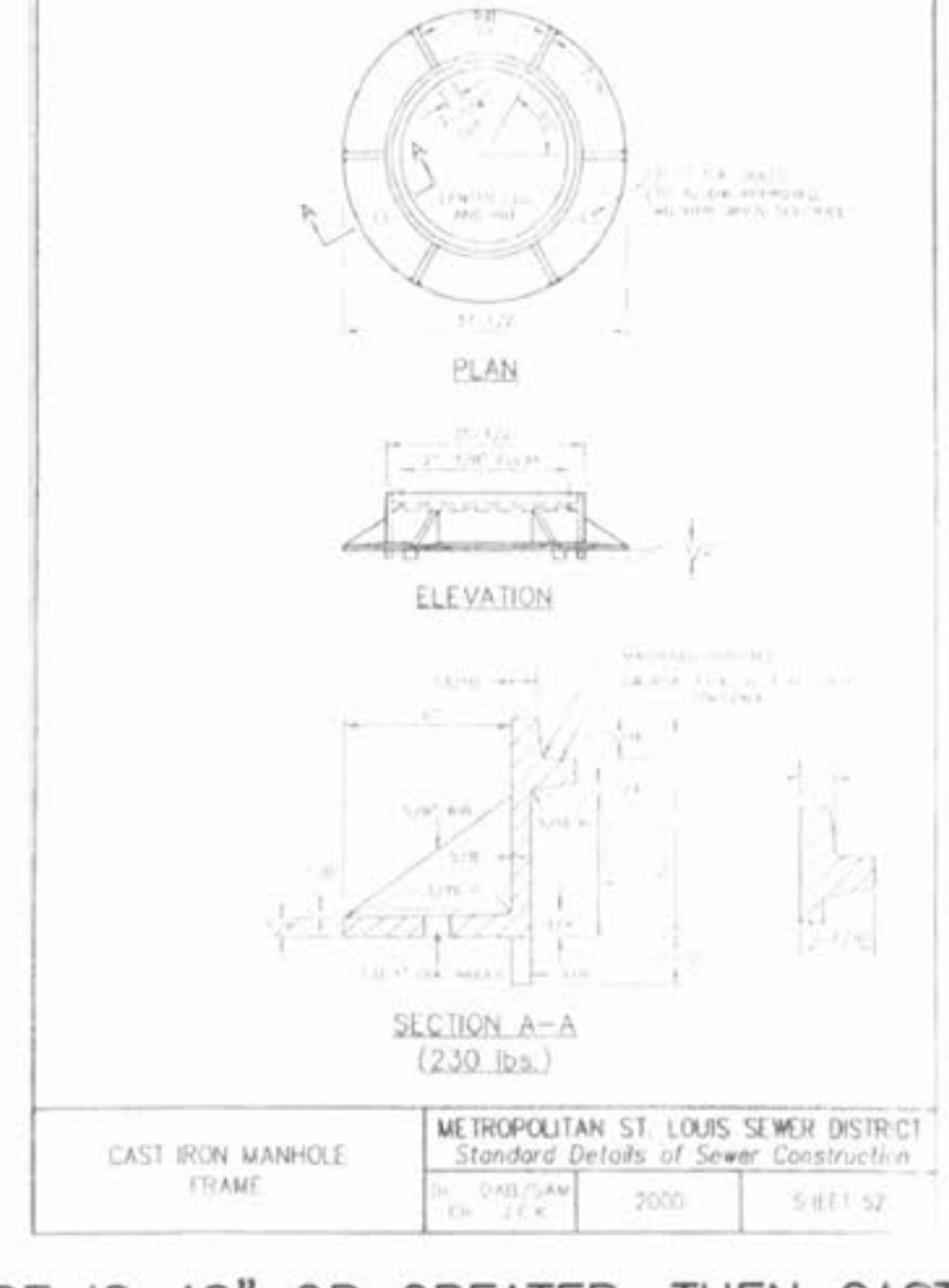
<p>DETAIL OF STEEL GRATE</p>	<p>METROPOLITAN ST. LOUIS SEWER DISTRICT Standard Details of Sewer Construction</p> <p>DR. 40/27/AM CR. 11-4</p> <p>2000</p> <p>SHEET 49</p>
-------------------------------------	---



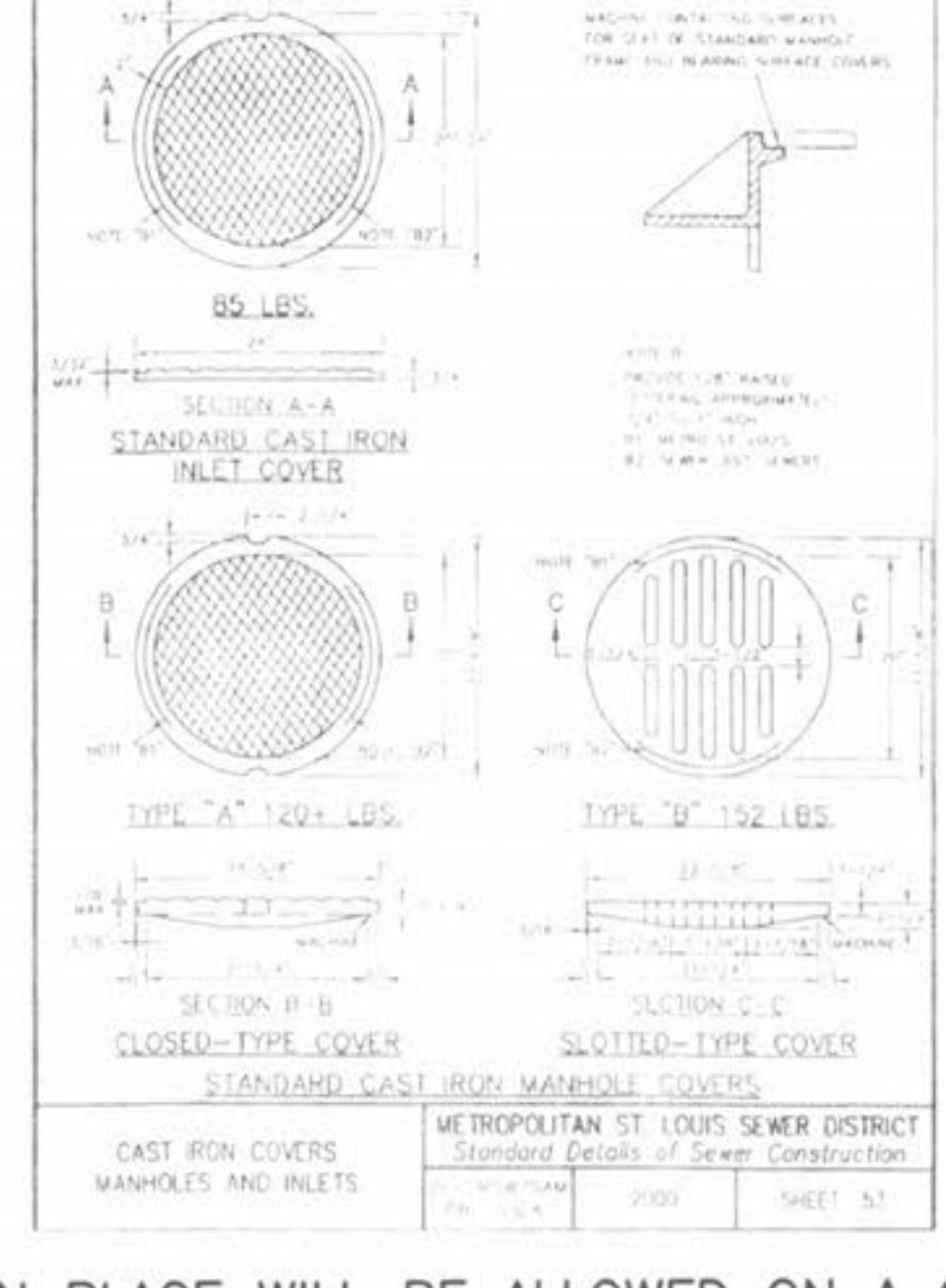
<p>STEEL REQUIREMENTS FOR GRATE INLET SEAT</p>	<p>METROPOLITAN ST. LOUIS SEWER DISTRICT Standard Details of Sewer Construction</p> <p>DR. 40/27/AM CR. 11-4</p> <p>2000</p> <p>SHEET 50</p>
---	---



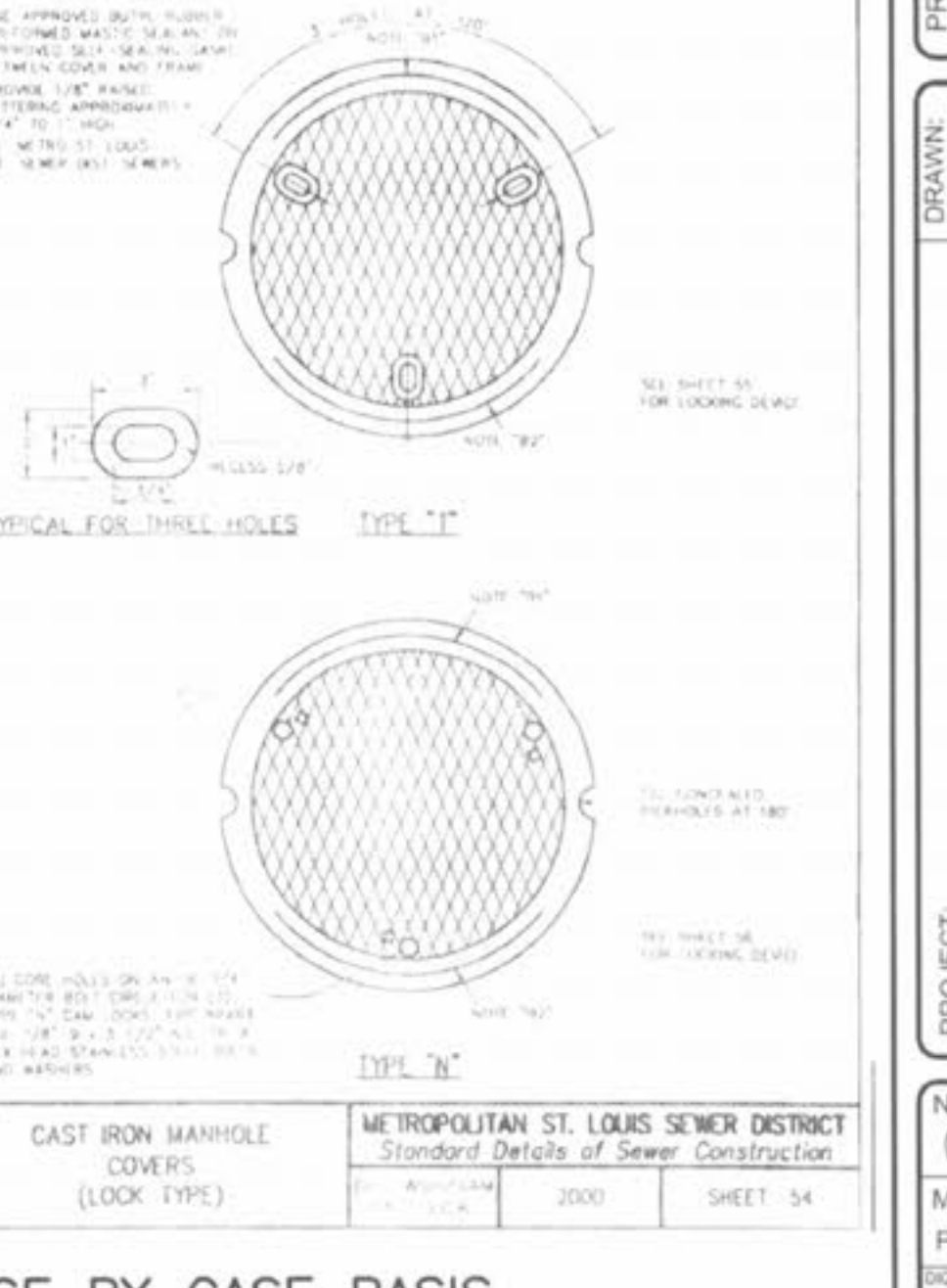
<p>CAST IRON SIDE INTAKE UNIT FOR GRATED INLETS 249 LBS.</p>	<p>METROPOLITAN ST. LOUIS SEWER DISTRICT Standard Details of Sewer Construction</p> <p>DR. 40/27/AM CR. 11-4</p> <p>2000</p> <p>SHEET 51</p>
---	---



<p>CAST IRON MANHOLE FRAME</p>	<p>METROPOLITAN ST. LOUIS SEWER DISTRICT Standard Details of Sewer Construction</p> <p>DR. 40/27/AM CR. 11-4</p> <p>2000</p> <p>SHEET 52</p>
---------------------------------------	---



<p>CAST IRON COVERS, MANHOLES AND INLETS</p>	<p>METROPOLITAN ST. LOUIS SEWER DISTRICT Standard Details of Sewer Construction</p> <p>DR. 40/27/AM CR. 11-4</p> <p>2000</p> <p>SHEET 53</p>
---	---



<p>CAST IRON MANHOLE COVERS (LOCK TYPE)</p>	<p>METROPOLITAN ST. LOUIS SEWER DISTRICT Standard Details of Sewer Construction</p> <p>DR. 40/27/AM CR. 11-4</p> <p>2000</p> <p>SHEET 54</p>
--	---

NOTE: NO BRICK OR CAST IN PLACE STORM SEWER STRUCTURES WILL BE ALLOWED UNLESS PIPE IS 48" OR GREATER, THEN CAST IN PLACE WILL BE ALLOWED ON A CASE BY CASE BASIS.

ISSUE	REMARKS/DATE
10	CITY COMMENTS/02-15-06
11	CITY COMMENTS/02-15-06
12	DCSD COMMENTS/03-28-05
13	DCSD COMMENTS/04-13-05
14	DCSD AND CITY COMMENTS/11-14-05
15	CITY COMMENTS/11-22-05
16	CITY COMMENTS/12-30-05
17	WATER DISTRICT #2 COMMENTS/01-17-06
18	DEVELOPER REVISIONS/01-24-06

PREPARED FOR:

STERLING CO.
ENGINEERS & SURVEYORS
509 NEW BAUMGARTNER ROAD
ST. LOUIS, MISSOURI 63129
(314) 487-6717

PREPARED BY:

CMB RHODES, L.L.C.
5091 NEW BAUMGARTNER ROAD
ST. LOUIS, MISSOURI 63129
(314) 487-6717

PROJECT:	COUNTRYSHIRE
DRAWN:	LG
DESIGNED:	SCM
CHECKED:	GM
NO.:	02 12 311
M.S.D. P#:	
DIGITAL FILE LOCATION:	SEWER-STERLING-2
SHEET TITLE:	MSD CONSTRUCTION DETAILS
OF:	CD6