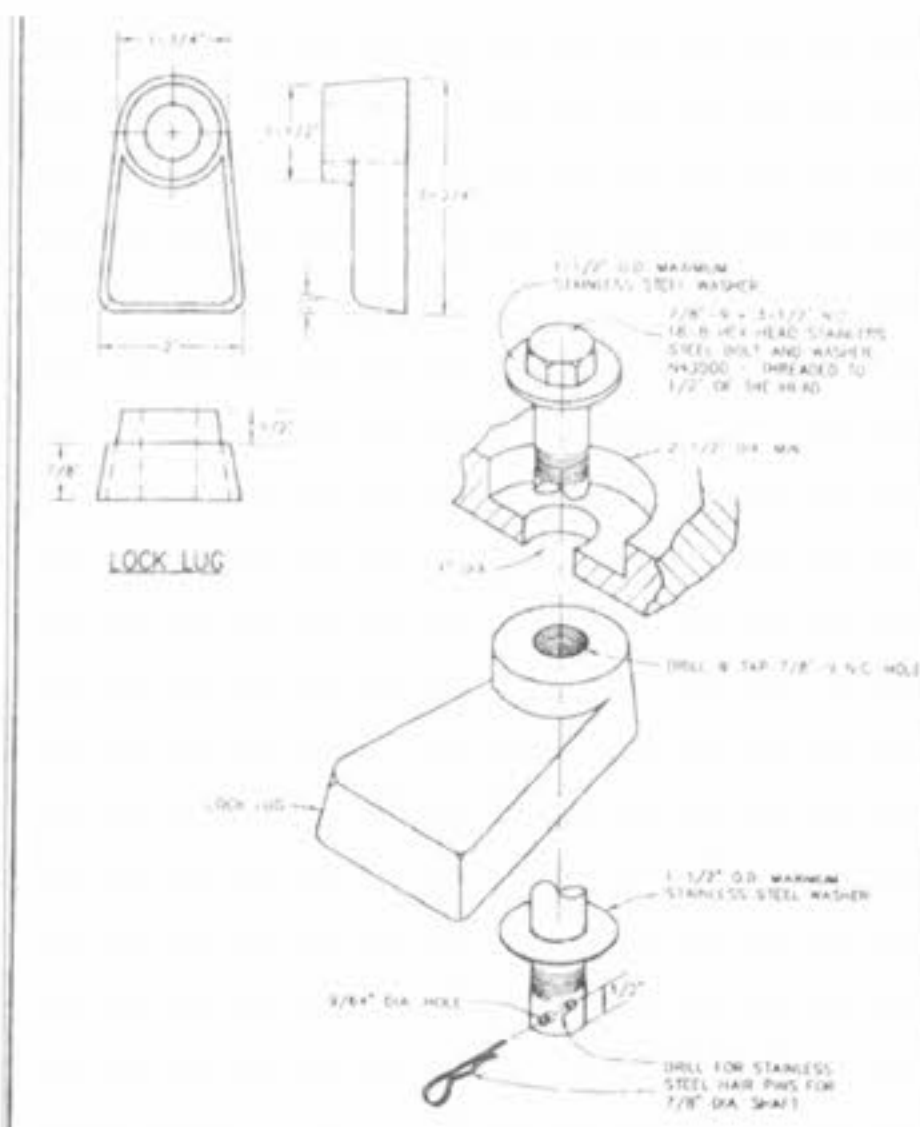
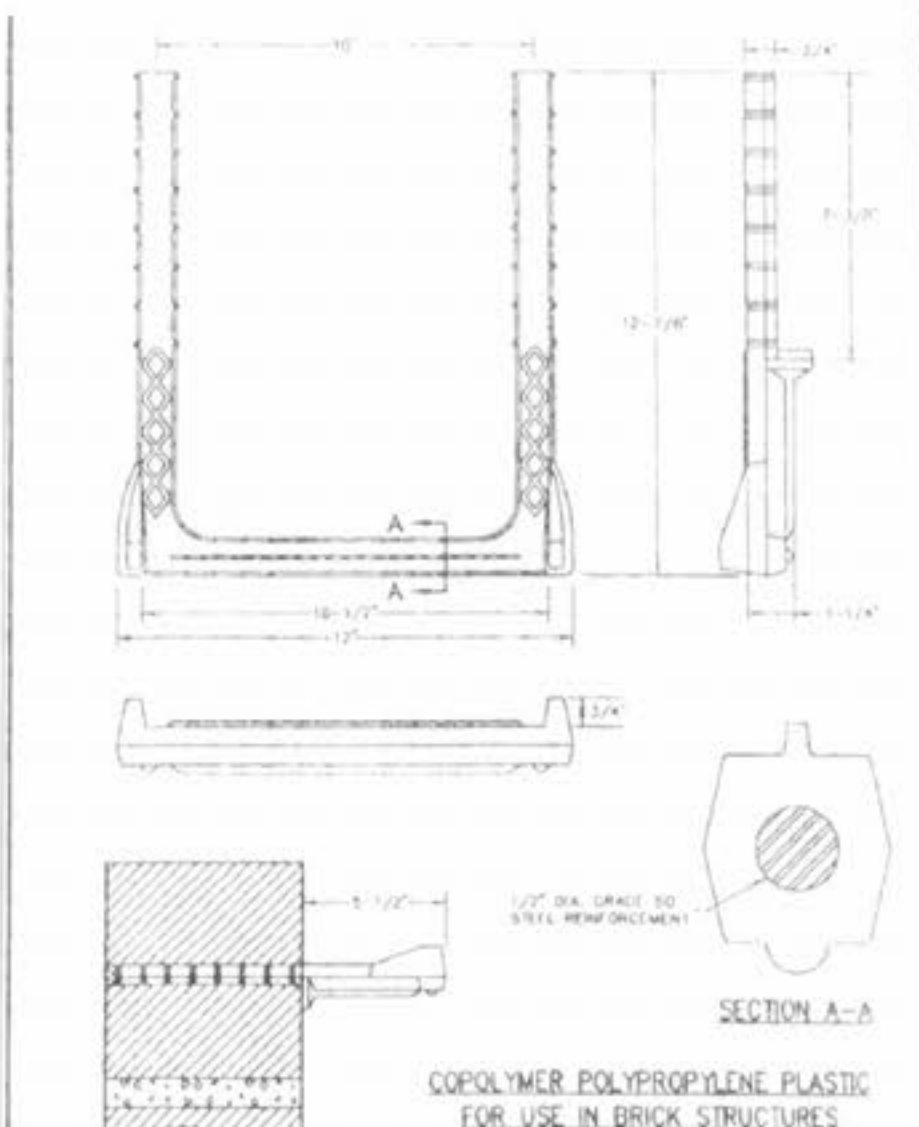


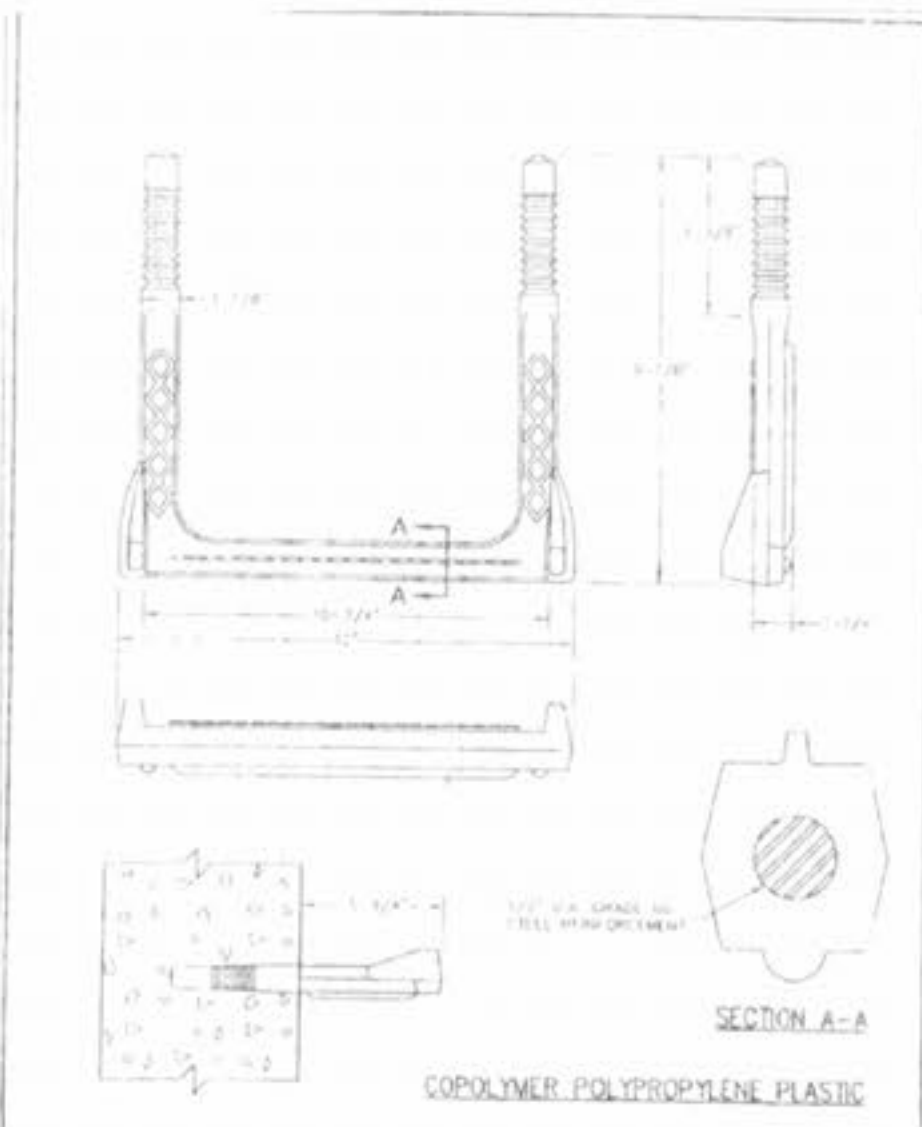
LOCKING DEVICE FOR TYPE "T" LOCK TYPE MANHOLE COVER
 METROPOLITAN ST. LOUIS SEWER DISTRICT
 Standard Details of Sewer Construction
 DR. RHW/SAM
 CH. J.C.A.
 2000
 SHEET 55



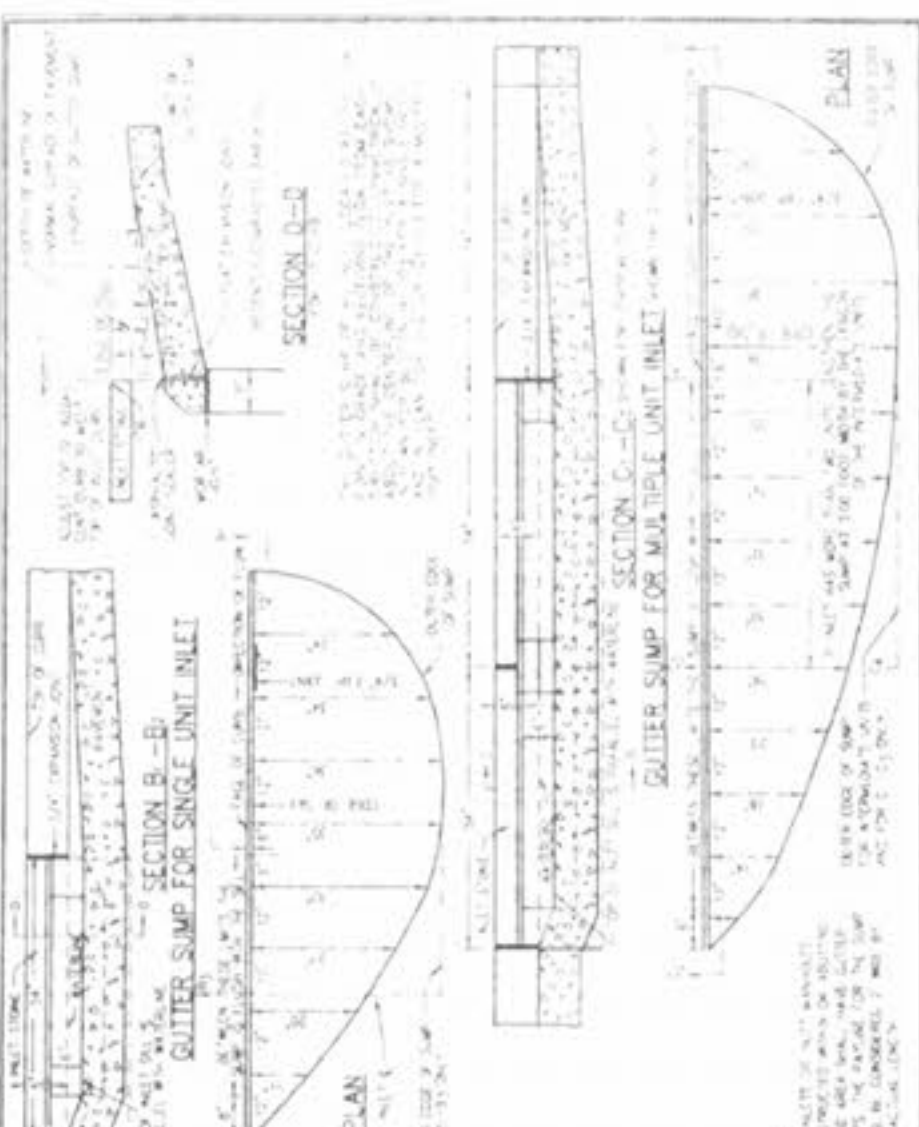
LOCKING DEVICE FOR TYPE "M" LOCK TYPE MANHOLE COVER
 METROPOLITAN ST. LOUIS SEWER DISTRICT
 Standard Details of Sewer Construction
 DR. RHW/SAM
 CH. J.C.A.
 2000
 SHEET 56



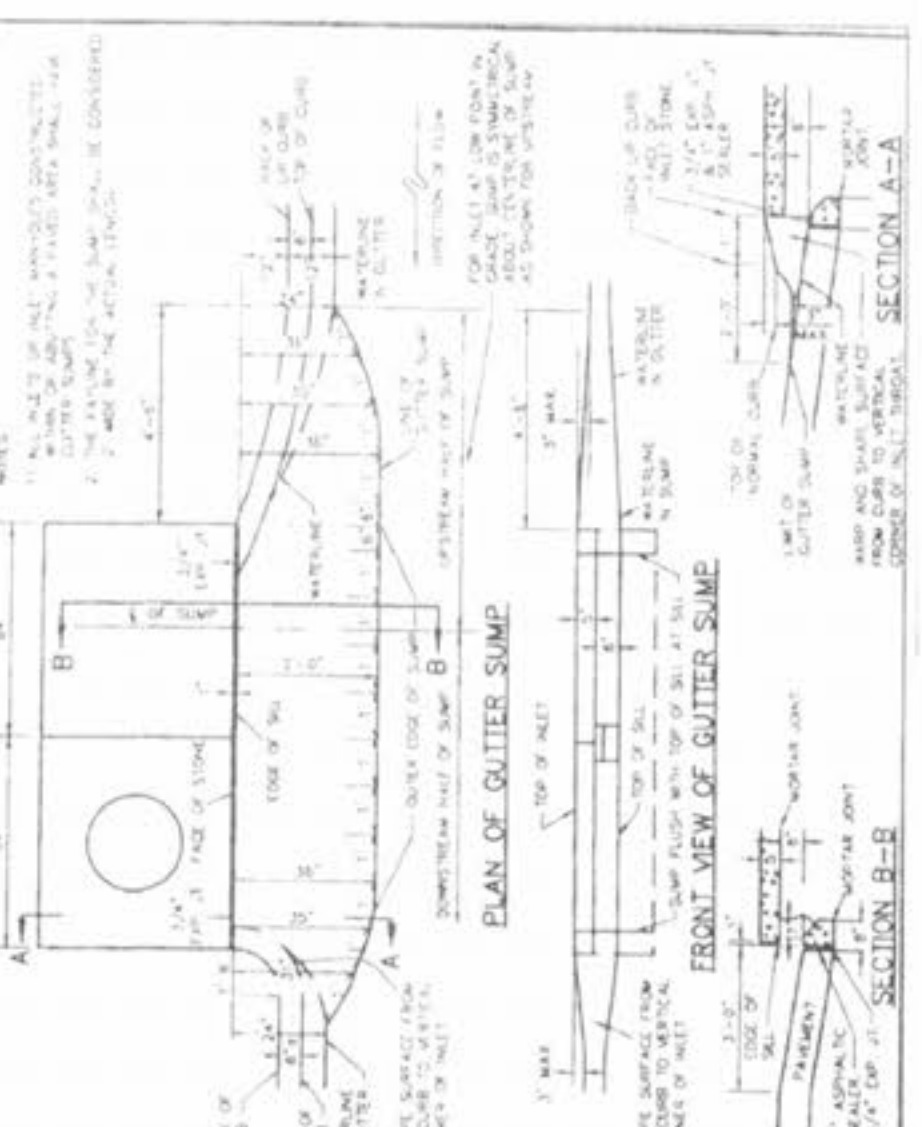
PSI-B MANHOLE STEP INTO JOINT
 METROPOLITAN ST. LOUIS SEWER DISTRICT
 Standard Details of Sewer Construction
 DR. WSH/AM
 CH. J.C.A.
 2000
 SHEET 57



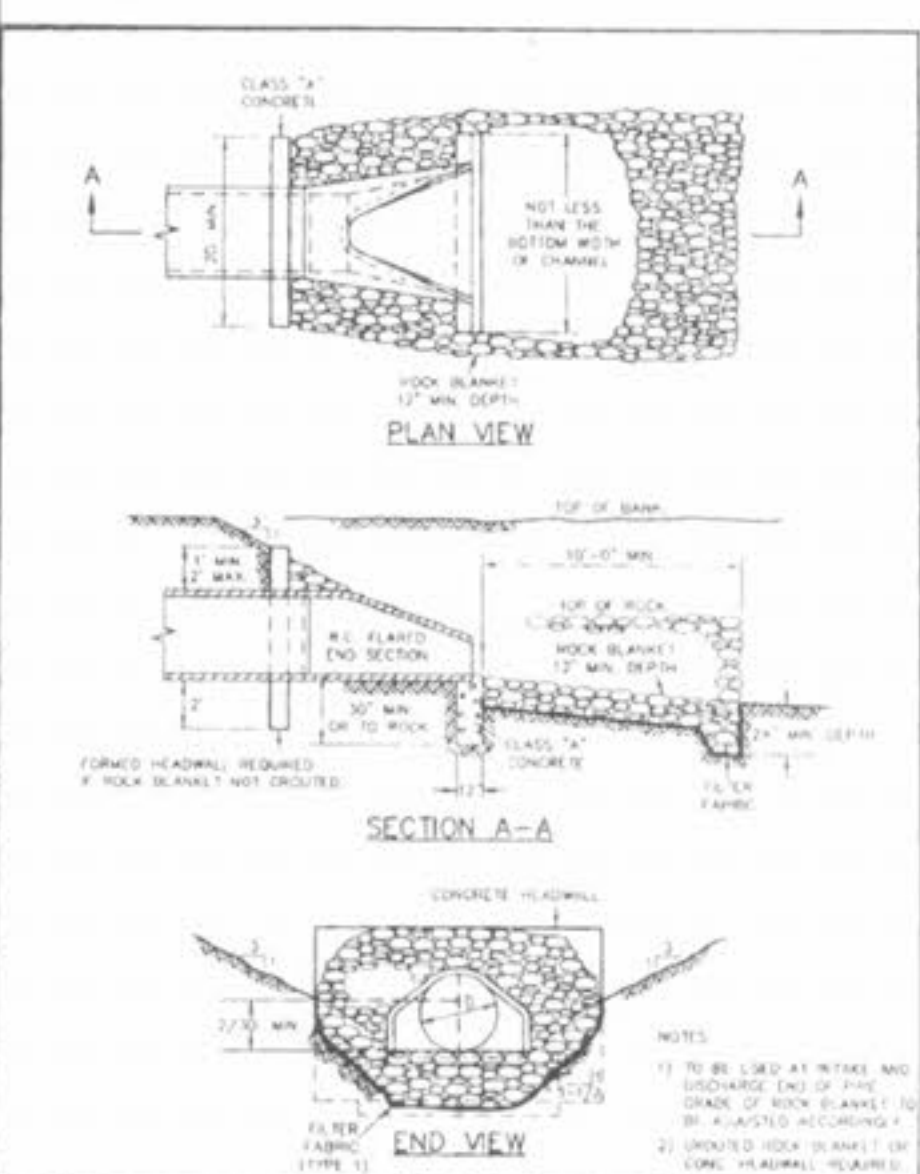
MANHOLE STEP FOR PRECAST & CAST-IN-PLACE MANHOLE
 METROPOLITAN ST. LOUIS SEWER DISTRICT
 Standard Details of Sewer Construction
 DR. WSH/AM
 CH. J.C.A.
 2000
 SHEET 58



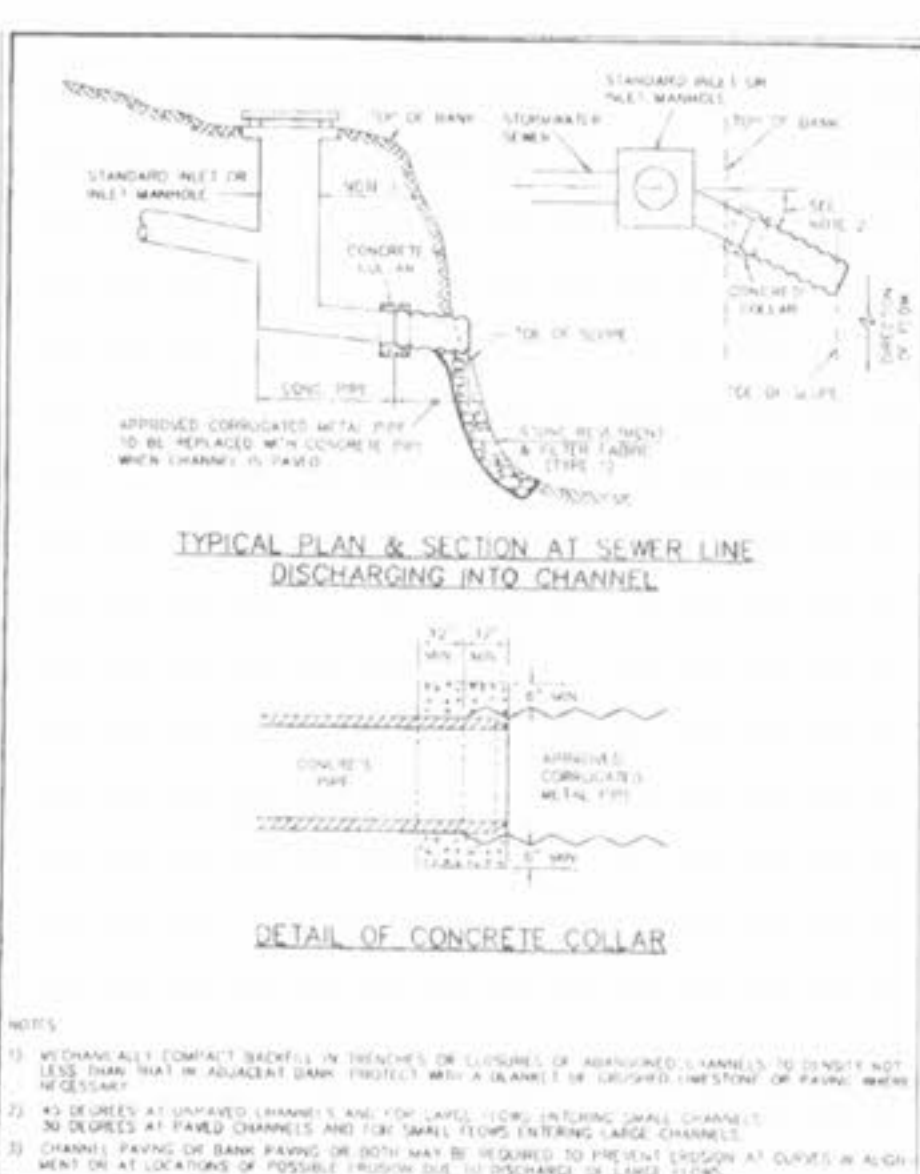
GUTTER SUMPS FOR VERTICAL CURB
 METROPOLITAN ST. LOUIS SEWER DISTRICT
 Standard Details of Sewer Construction
 DR. RHW/SAM
 CH. J.C.A.
 2000
 SHEET 59



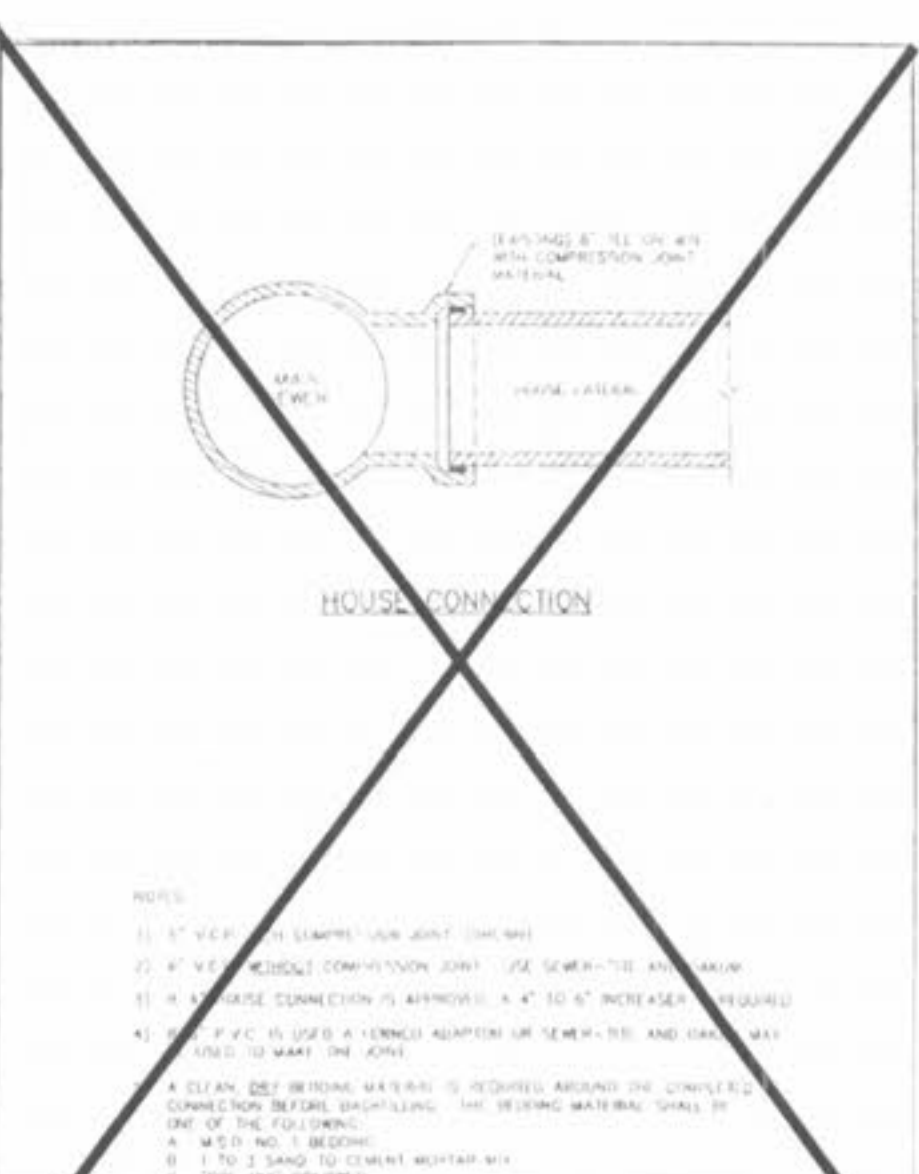
GUTTER SUMP FOR LIP CURB
 METROPOLITAN ST. LOUIS SEWER DISTRICT
 Standard Details of Sewer Construction
 DR. RHW/SAM
 CH. J.C.A.
 2000
 SHEET 60



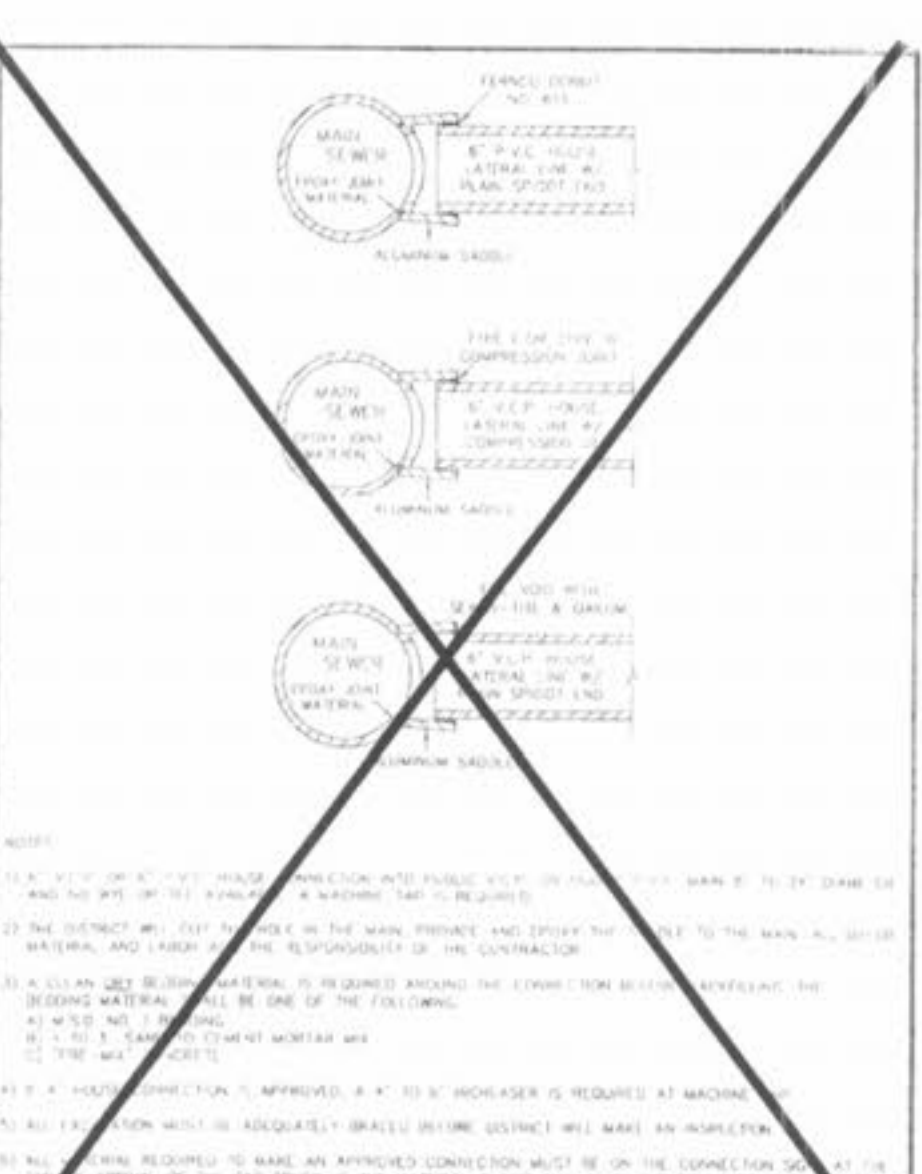
FLARED END SECTION
 METROPOLITAN ST. LOUIS SEWER DISTRICT
 Standard Details of Sewer Construction
 DR. WSH/SAM
 CH. J.C.A.
 2000
 SHEET 61



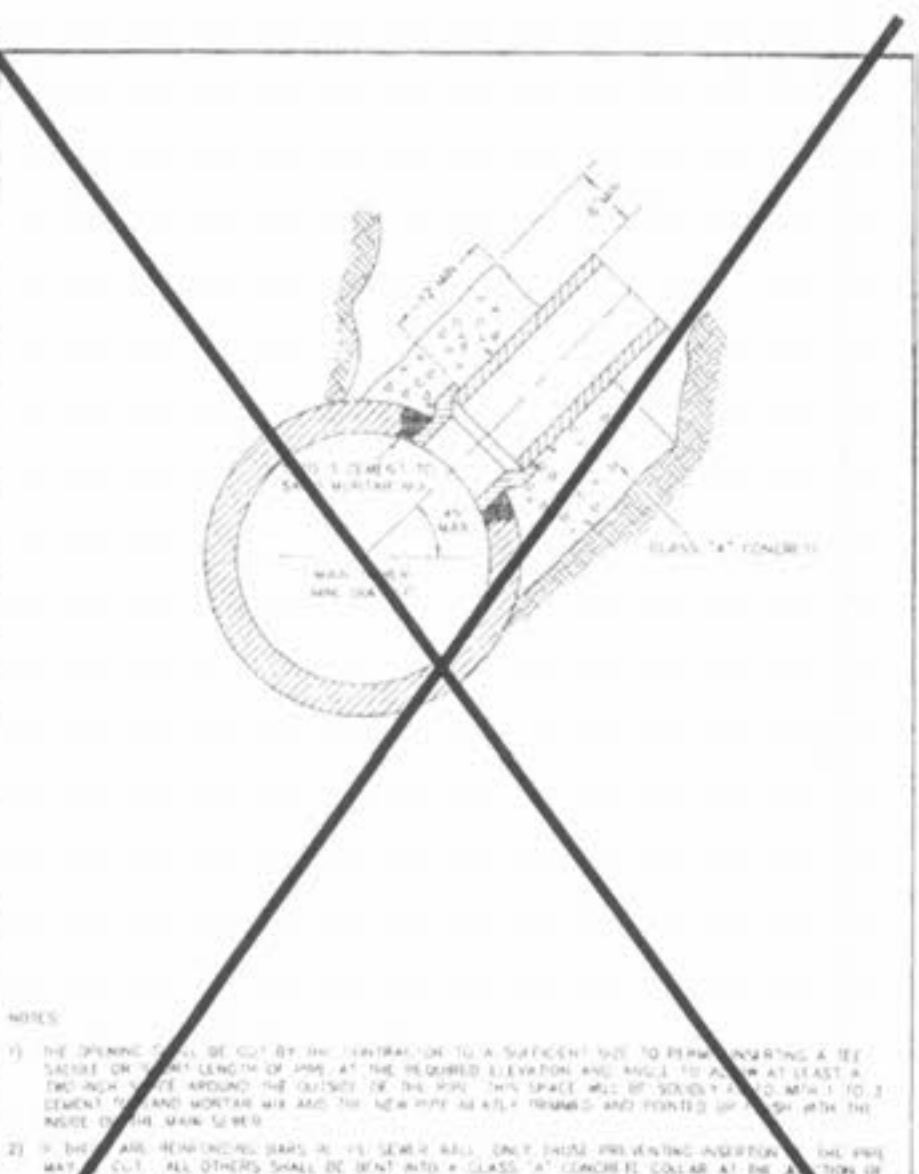
TYPICAL PLAN & SECTION AT SEWER LINE DISCHARGING INTO CHANNEL
 METROPOLITAN ST. LOUIS SEWER DISTRICT
 Standard Details of Sewer Construction
 DR. RHW/SAM
 CH. J.C.A.
 2000
 SHEET 62



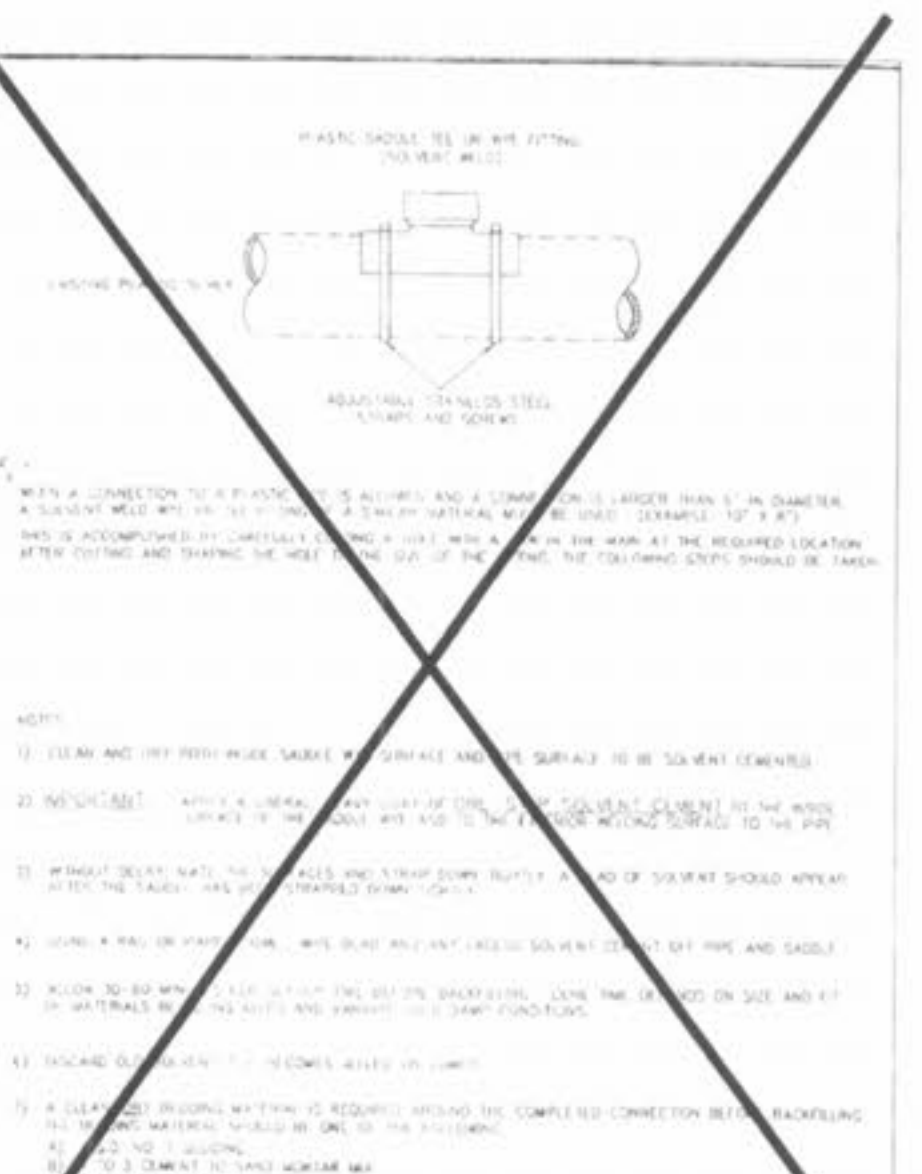
HOUSE CONNECTION TO EXISTING TEE OR WYE
 METROPOLITAN ST. LOUIS SEWER DISTRICT
 Standard Details of Sewer Construction
 DR. WSH/SAM
 CH. J.C.A.
 2000
 SHEET 63



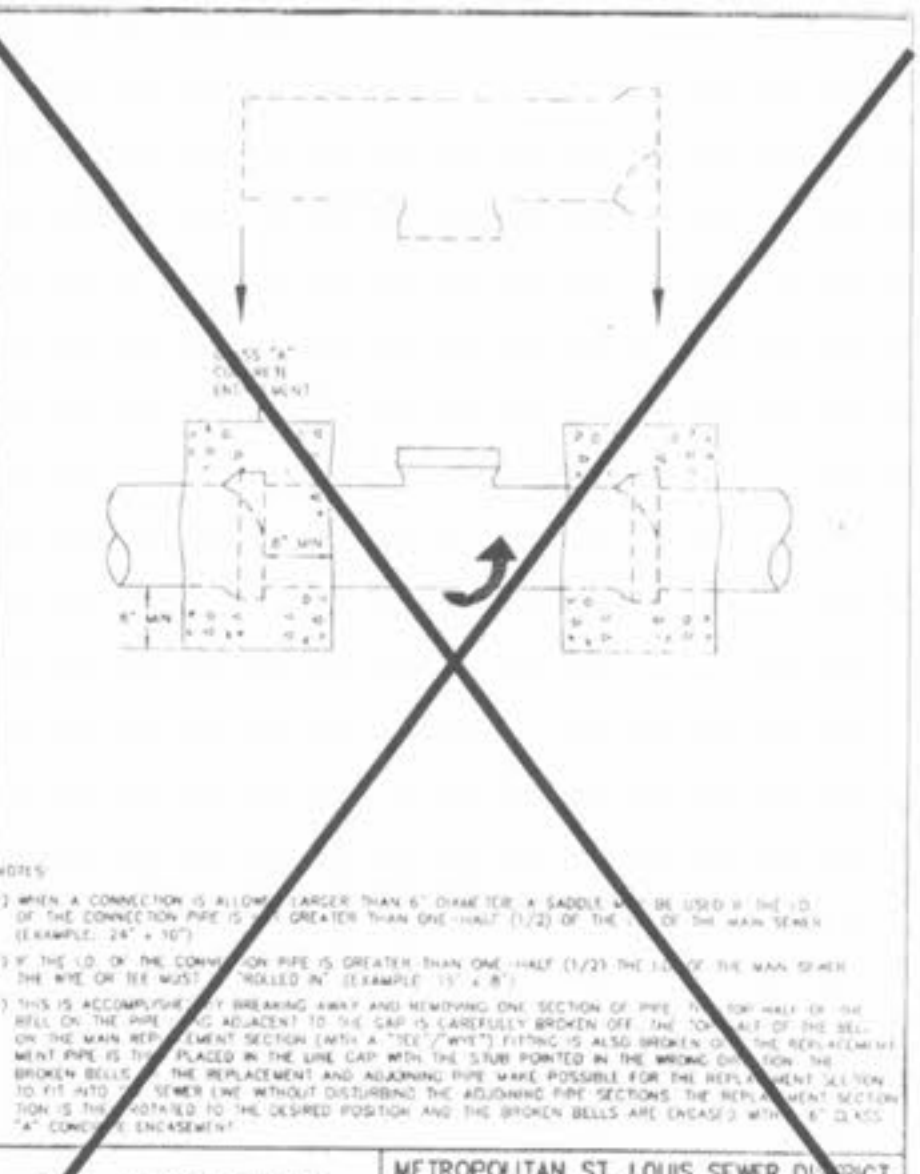
MACHINE TAP
 METROPOLITAN ST. LOUIS SEWER DISTRICT
 Standard Details of Sewer Construction
 DR. WSH/SAM
 CH. J.C.A.
 2000
 SHEET 64



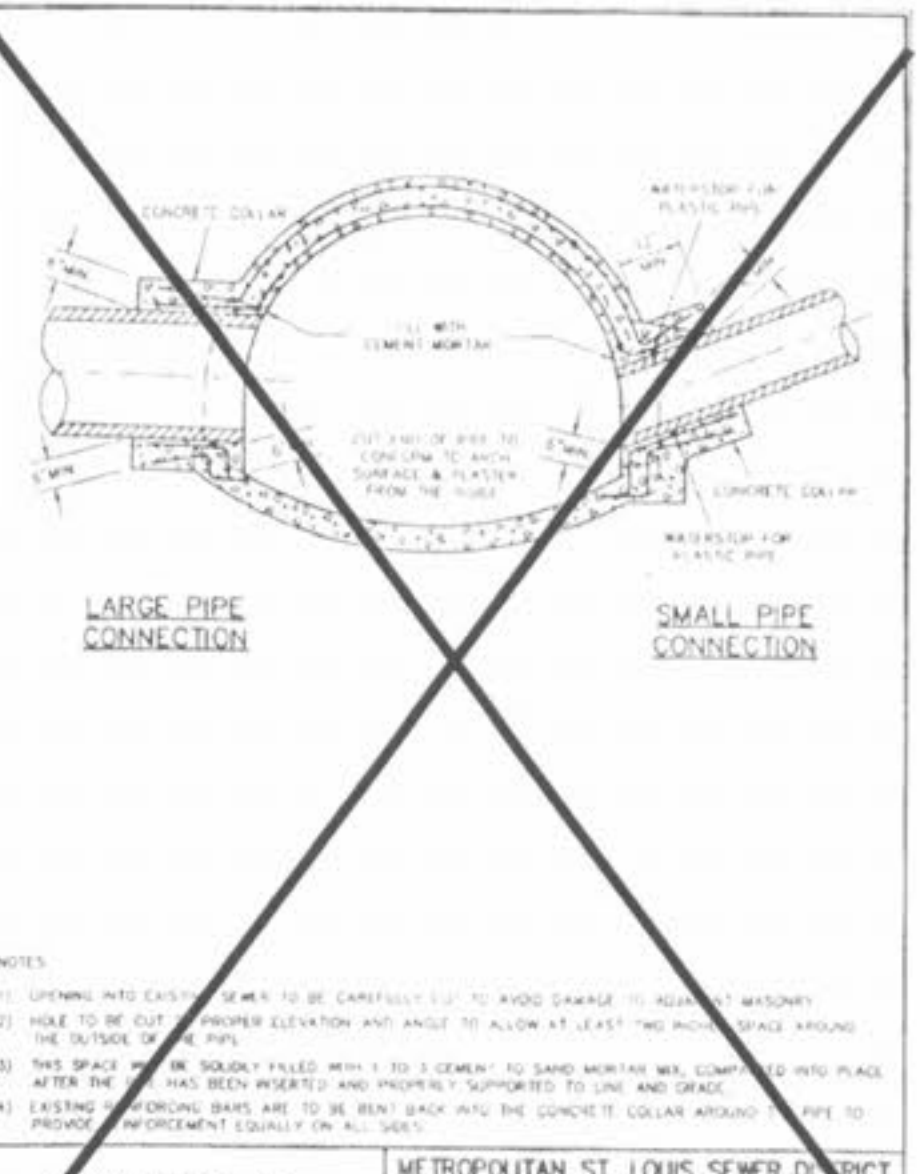
HOUSE CONNECTIONS ALLOWED BY TEE SADDLE
 METROPOLITAN ST. LOUIS SEWER DISTRICT
 Standard Details of Sewer Construction
 DR. WSH/SAM
 CH. J.C.A.
 2000
 SHEET 65



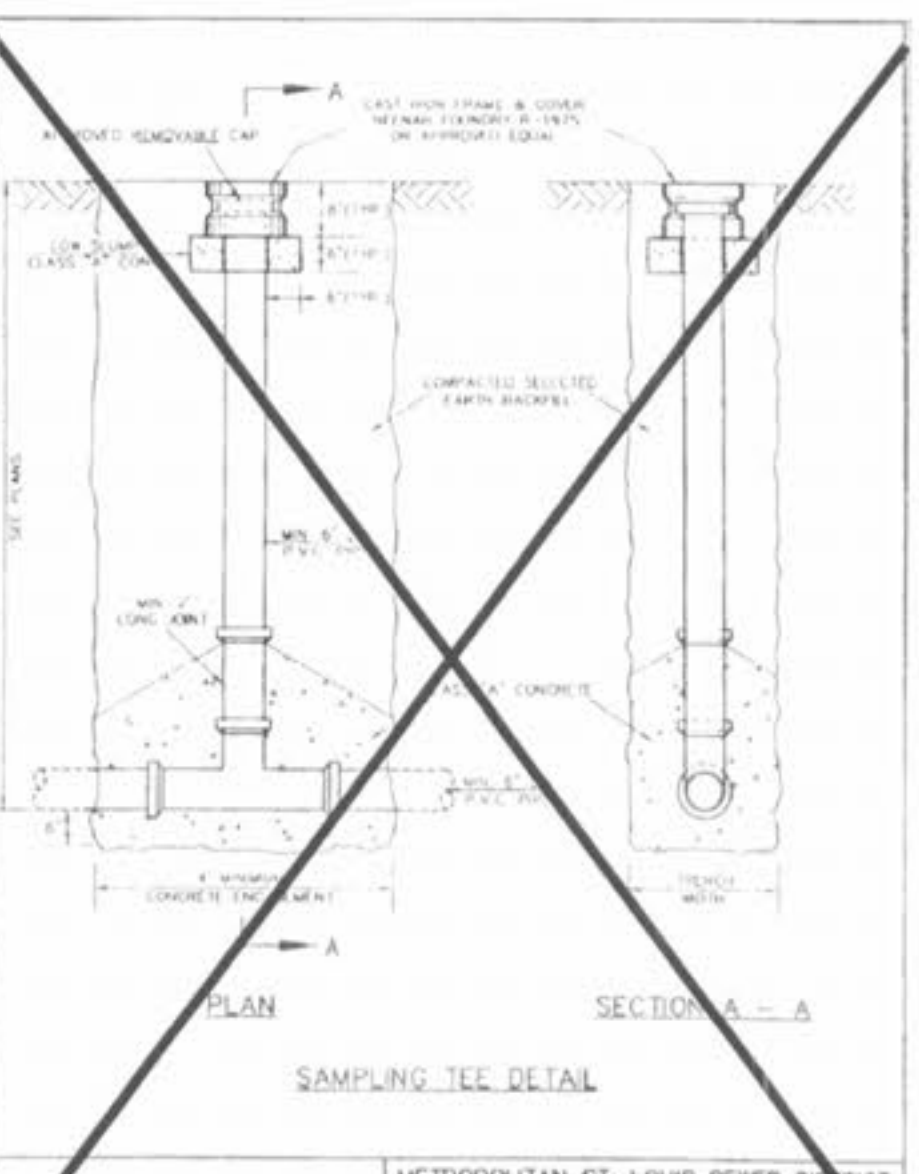
(& LARGER) CONNECTION TO PLASTIC MAIN
 METROPOLITAN ST. LOUIS SEWER DISTRICT
 Standard Details of Sewer Construction
 DR. WSH/SAM
 CH. J.C.A.
 2000
 SHEET 66



PULL-IN FOR EXISTING CLAY OR CONCRETE PIPE
 METROPOLITAN ST. LOUIS SEWER DISTRICT
 Standard Details of Sewer Construction
 DR. SAB/AM
 CH. J.C.A.
 2000
 SHEET 67



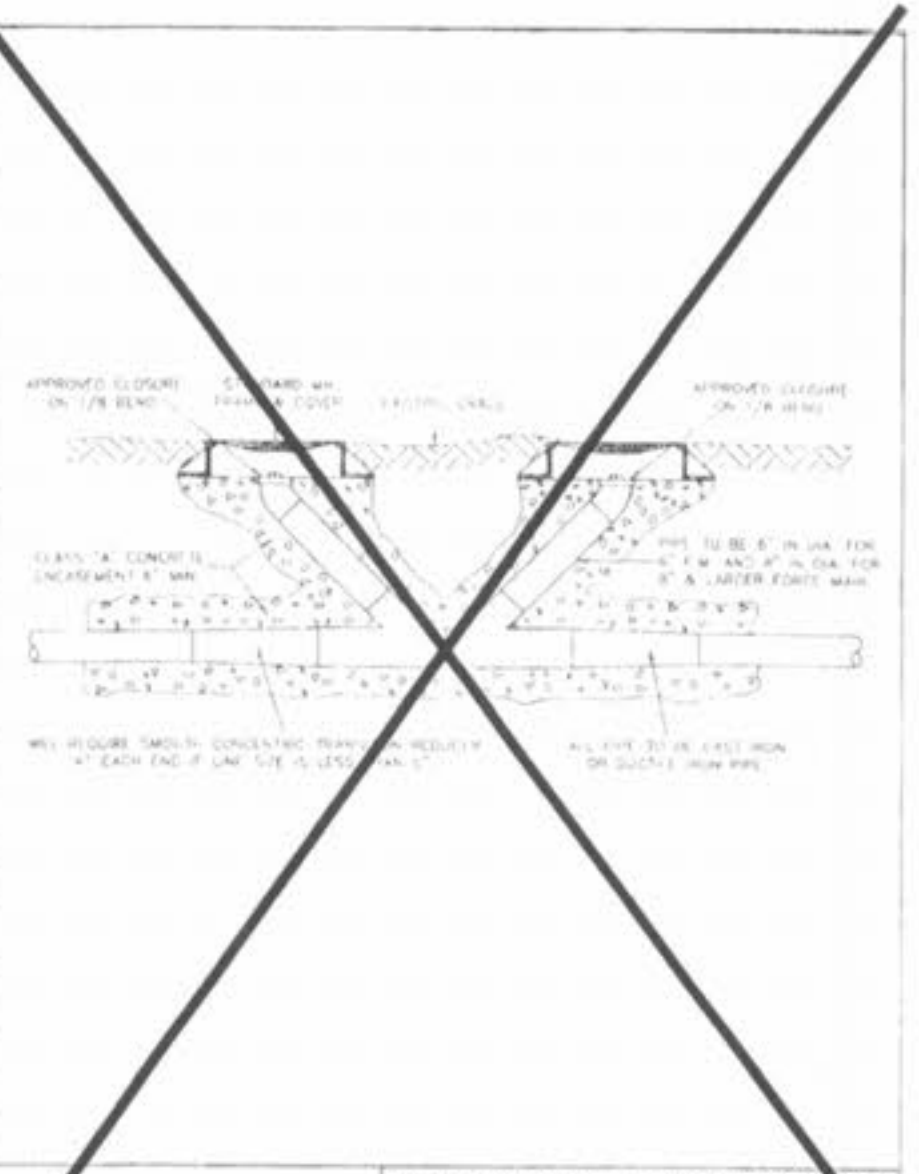
CONNECTIONS TO LARGE SEWERS
 METROPOLITAN ST. LOUIS SEWER DISTRICT
 Standard Details of Sewer Construction
 DR. WSH/SAM
 CH. J.C.A.
 2000
 SHEET 68



SAMPLING TEE
 METROPOLITAN ST. LOUIS SEWER DISTRICT
 Standard Details of Sewer Construction
 DR. WSH/SAM
 CH. J.C.A.
 2000
 SHEET 69



METROPOLITAN ST. LOUIS SEWER DISTRICT
 project the name project the name
 YOUR DOLLARS AT WORK FOR YOU
 MSO
 FUNDED BY State Missouri Municipality
 METROPOLITAN ST. LOUIS SEWER DISTRICT
 Standard Details of Sewer Construction
 DR. WSH/AM
 CH. J.C.A.
 2000
 SHEET 70



FORCE MAIN CLEANOUT (6" DIA. & SMALLER)
 METROPOLITAN ST. LOUIS SEWER DISTRICT
 Standard Details of Sewer Construction
 DR. WSH/SAM
 CH. J.C.A.
 2000
 SHEET 71

NOTE: NO BRICK OR CAST IN PLACE STORM SEWER STRUCTURES WILL BE ALLOWED UNLESS PIPE IS 48" OR GREATER, THEN CAST IN PLACE WILL BE ALLOWED ON A CASE BY CASE BASIS.

ISSUE	REMARKS/DATE
10	CITY COMMENTS/02/03/06
11	CITY COMMENTS/02/15/06
3	DCSD COMMENTS/09/29/05
4	DCSD COMMENTS/10/19/05
5	DCSD AND CITY COMMENTS/11/14/05
6	CITY COMMENTS/11/22/05
7	CITY COMMENTS/12/30/05
8	WATER DISTRICT #2 COMMENTS/01/17/06
9	DEVELOPER REVISIONS/01/24/06

PREPARED FOR:
CMB RHODES, L.L.C.
 5091 NEW BAUMGARTNER ROAD
 ST. LOUIS, MISSOURI 63129
 (314) 437-6717

THE **STERLING** CO.
 ENGINEERS & SURVEYORS
 5035 NEW BAUMGARTNER ROAD
 ST. LOUIS, MISSOURI 63129
 (314) 487-0440 FAX 487-8944
 E-Mail: Sterling@sterling-eng-sur.com

APPROVED: *[Signature]*
 DATE: 1/23/06

DRAWN:	LG
DESIGNED:	JCM
CHECKED:	GM
PROJECT:	COUNTRYSHIRE
SHEET TITLE:	MSD CONSTRUCTION DETAILS
NO.	02 12 311
M.S.D. #	P#
DIGITAL FILE (E:\WORK\SURVEY\STERLING-2.DWG)	SHEET CD7
	OF

BASE MAP