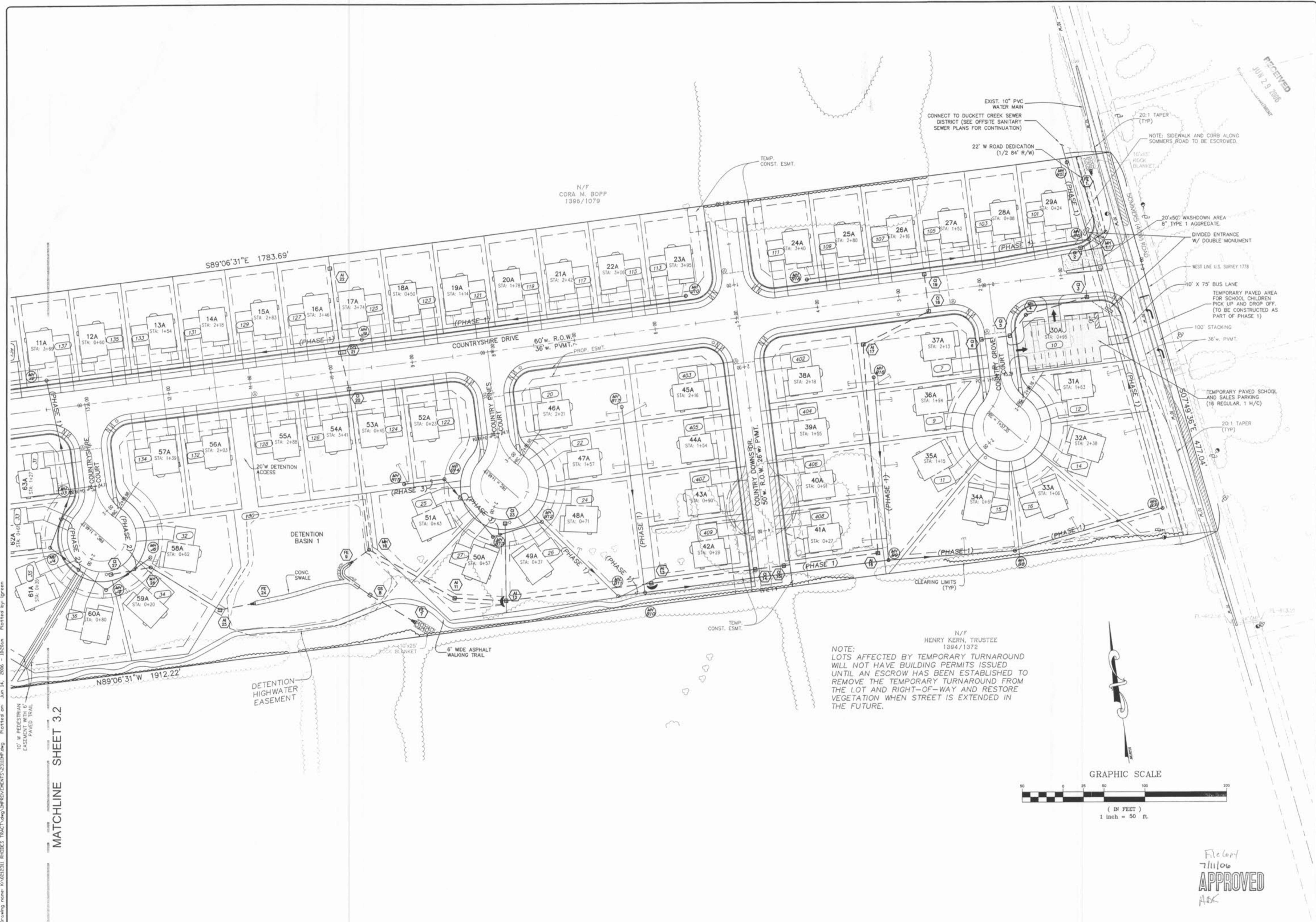


Drawing name: K:\02\2311\BQDES\TRACT\Map\BQDES\CHM\CHM\2311SP.dwg Plotted on: Jun 14, 2006 - 10:20am Plotted by: lgreen

MATCHLINE SHEET 3.2



RECEIVED  
JUN 29 2006

ISSUE	REMARKS/DATE
10	CITY COMMENTS 02-05-06
11	CITY COMMENTS 02-15-06
12	REVISED A-JOINT LOCATIONS 06-14-06
4	DCSD COMMENTS 10-13-05
5	DCSD AND CITY COMMENTS 11-14-05
6	CITY COMMENTS 11-22-05
7	CITY COMMENTS 12-20-05
8	WATER DISTRICT #2 COMMENTS 01-17-06
9	DEVELOPER REVISIONS 01-24-06

PREPARED FOR:  
**CMB RHODES, L.L.C.**  
P.O. Box 511038  
St. Louis, MO 63151-1038  
(314) 487-6717

PREPARED BY:  
**THE STERLING CO.**  
ENGINEERS & SURVEYORS  
5055 NEW BAUMGARTNER ROAD  
ST. LOUIS, MISSOURI 63129  
(314) 487-0440 FAX 487-8944  
E-Mail: Sterling@sterling-eng-sur.com

PROJECT: **COUNTRYSHIRE**  
DRAWN: G.S.  
DESIGNED: J.C.M.  
CHECKED: [ ]  
SHEET TITLE: **SITE PLAN**

NO. 02	12	311
M.S.D.	SHEET	
PH 3.1	OF	

File copy  
7/11/06  
**APPROVED**  
A&K