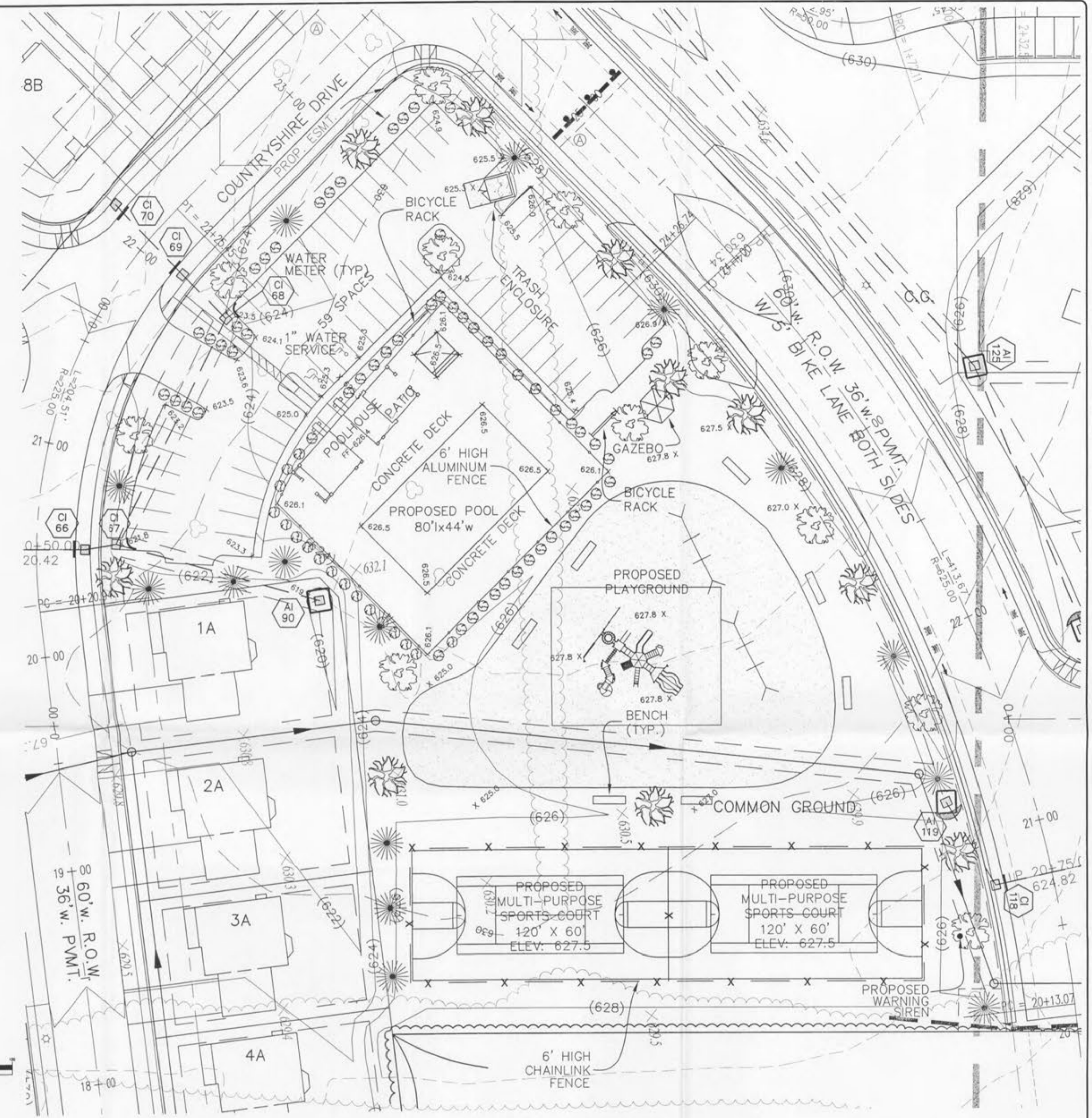
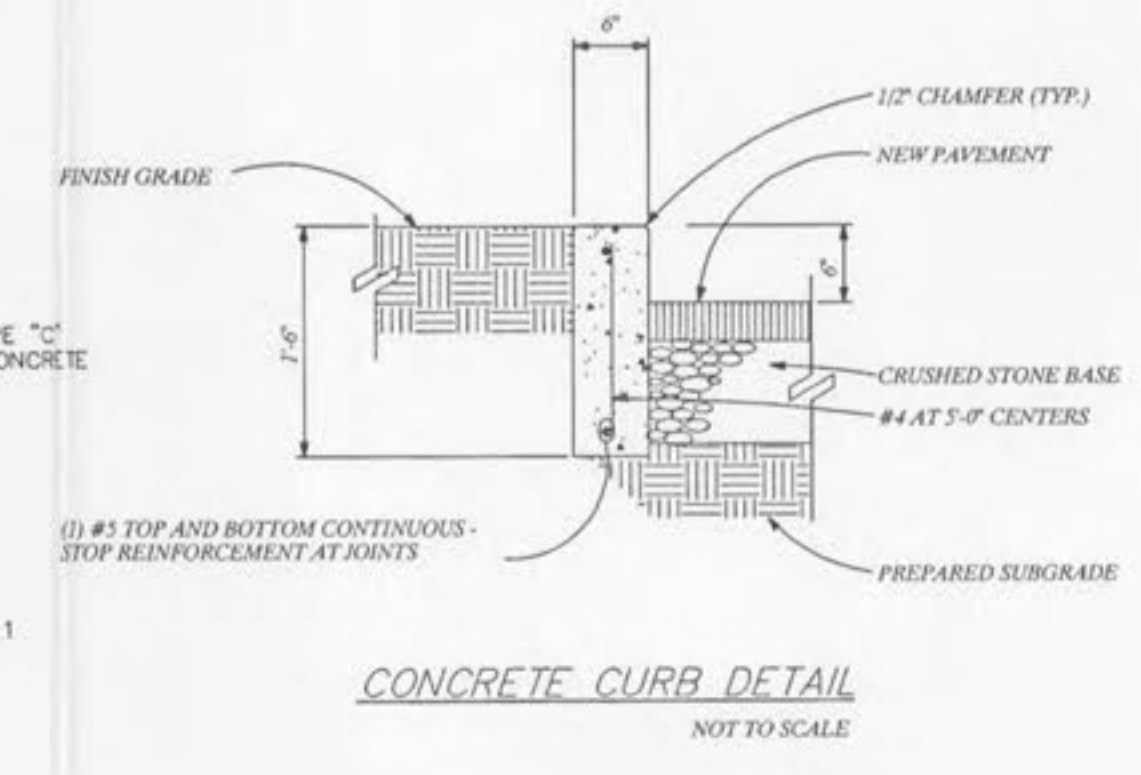
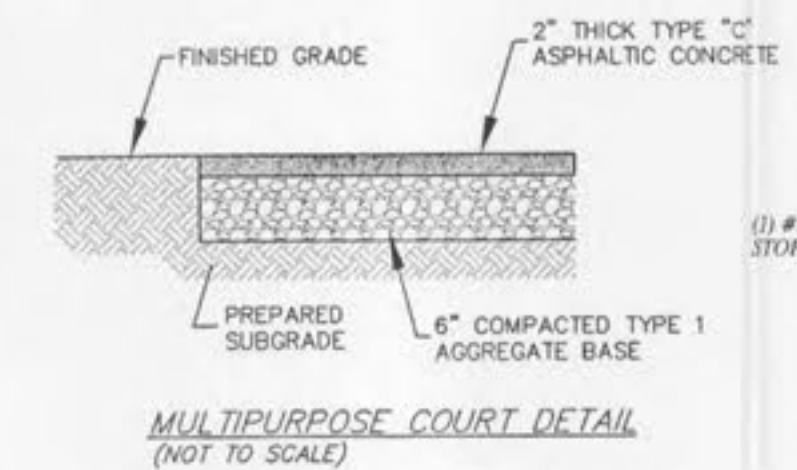
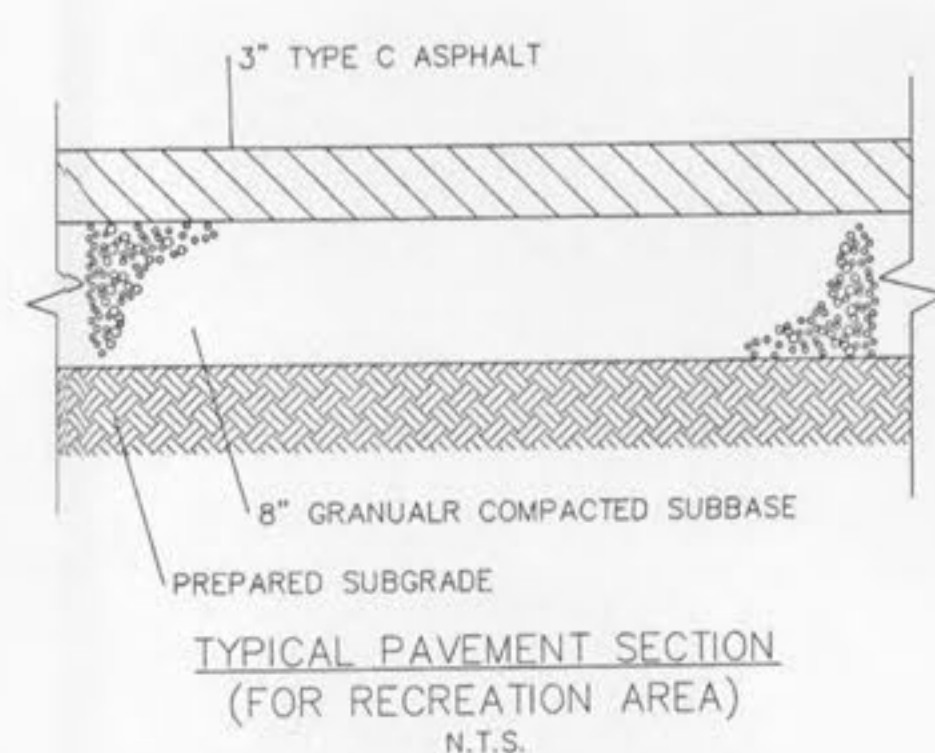
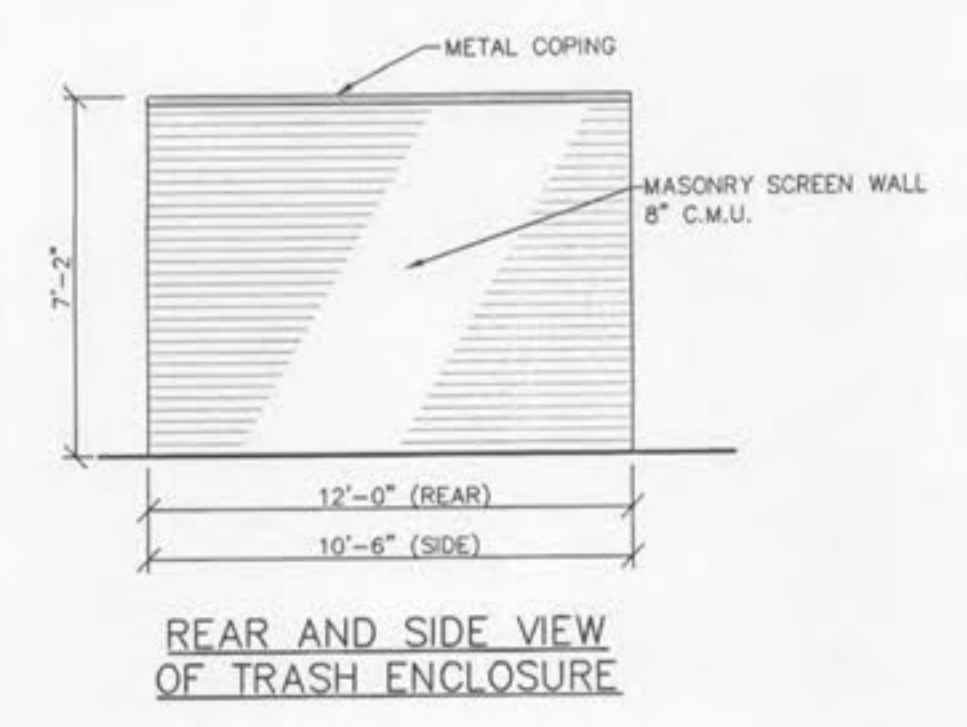
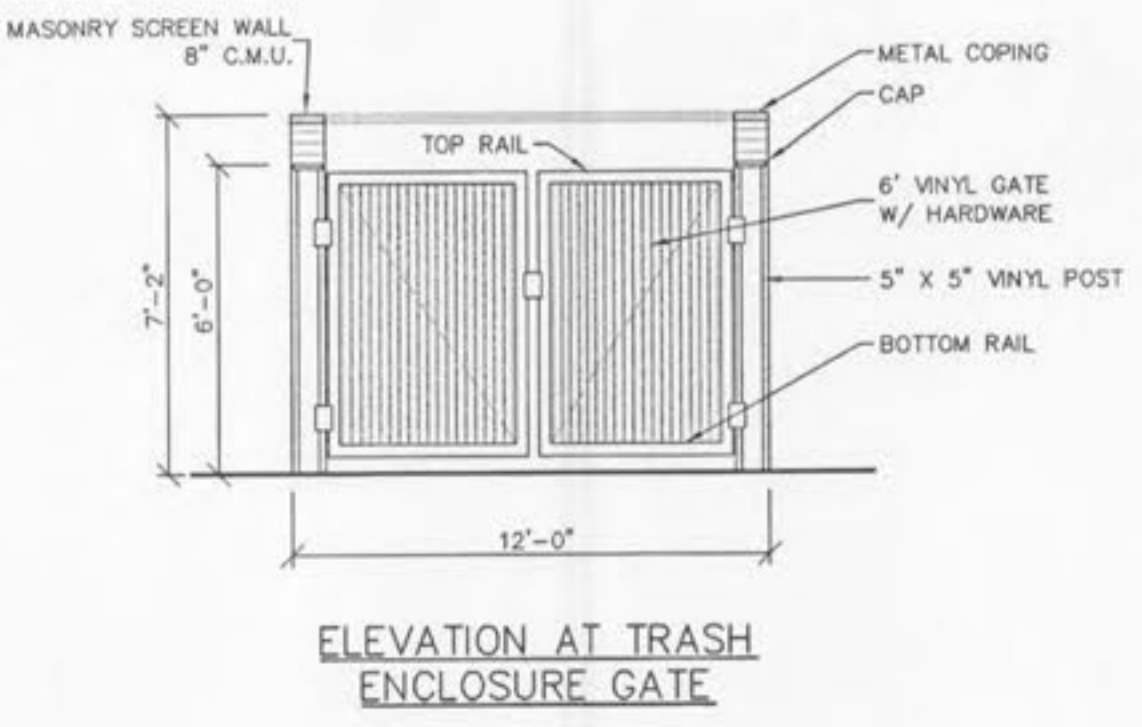
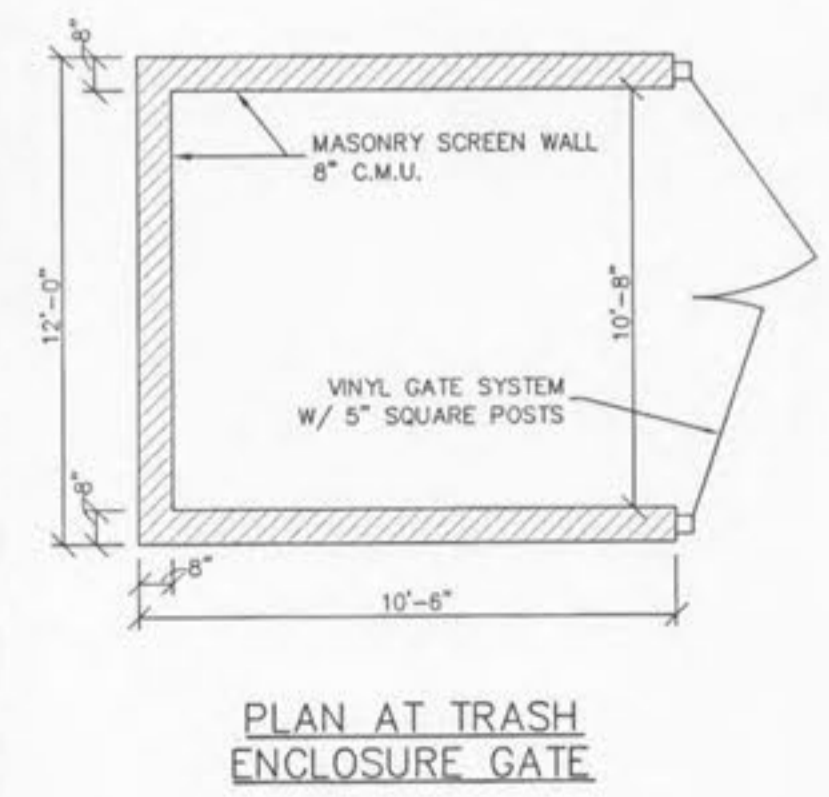
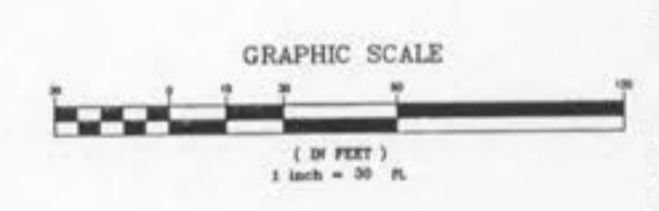


CITY OF O'FALLON
COMMUNITY DEVELOPMENT DEPARTMENT
ACCEPTED FOR CONSTRUCTION
BY: *[Signature]* DATE: *11/16/07*
PROFESSIONAL ENGINEER'S SEAL
INDICATES RESPONSIBILITY FOR DESIGN



Drawing name: K:\021231 SHIRES TRACT\WP\PROV\DWG\150403\150404.dwg Plotted on: Jul 27, 2007 - 7:53am Plotted by: JMBOLD

ISSUE REMARKS/DATE

10	CITY COMMENTS 02-03-06
11	CITY COMMENTS 02-15-06
12	REVISED A-JOINT LOCATIONS 06-14-06
13	REVISED SPORTS COURTS 12/06/07-27-07
6	CITY COMMENTS 11-22-05
7	CITY COMMENTS 12-30-05
8	WATER DISTRICT #2 COMMENTS 01-17-06
9	DEVELOPER REVISIONS 07-24-06

PREPARED FOR:

CMB RHODES, L.L.C.
P.O. Box 511038
St. Louis, MO 63151-1038
(314) 487-6717

PROFESSIONAL ENGINEER'S SEAL

RODNEY R. STERLING
Professional Engineer
No. 000000000
PE-200201891
Professional Seal

PREPARED BY:

THE STERLING CO.
ENGINEERS & SURVEYORS
5055 NEW BAUMGARTNER ROAD
ST. LOUIS, MO 63114
314-487-2440 FAX 487-3844
E-Mail: Sterling@sterling-eng-survey.com

DRAWN: _____

DESIGNED: _____

CHECKED: _____

PROJECT: **COUNTRYSHIRE**

SHEET TITLE: **RECREATION AREA & DETAILS**

NO. 02	12	311
M.S.D.		SHEET
PH		R1
		OF