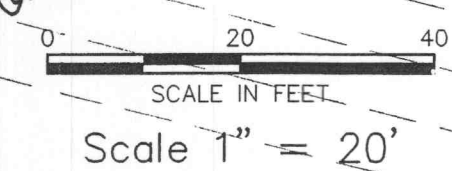
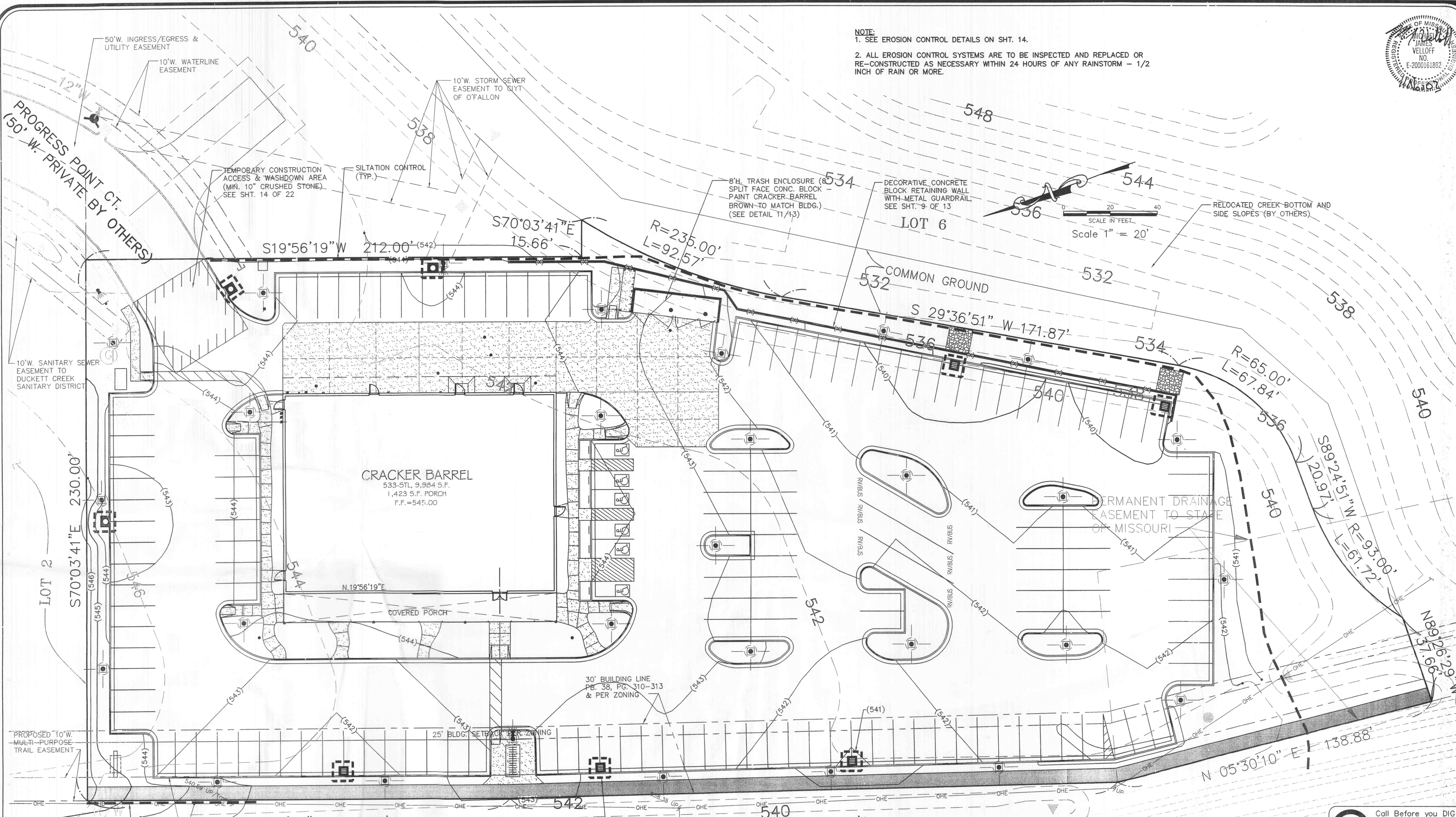




NOTE:
 1. SEE EROSION CONTROL DETAILS ON SHT. 14.
 2. ALL EROSION CONTROL SYSTEMS ARE TO BE INSPECTED AND REPLACED OR RE-CONSTRUCTED AS NECESSARY WITHIN 24 HOURS OF ANY RAINSTORM - 1/2 INCH OF RAIN OR MORE.



MISSOURI STATE HIGHWAY K
 (VARIABLE WIDTH)
 D.B. 2648 PG. 1567

PROJECT SITE IS:
LOT 1
 (111,705± SQ. FT.)
 2.564± Ac.

PLANNING & ZONING FILE #99104.06

 Call Before you DIG
 TOLL FREE
1-800-344-7483
 MISSOURI ONE-CALL SYSTEM INC.

MODOT (314) 340-4100
 Underground facilities, structures and utilities have been plotted from available surveys, records and information and, therefore, do not necessarily reflect the actual existence, non-existence, size, type, number of, location or depth of these facilities, structures and utilities.

The Contractor shall be responsible for verifying the actual location of all underground facilities, structures and utilities, either shown or not shown on these plans. The underground facilities, structures and utilities shall be located in the field prior to any grading, excavation or construction of improvements. Should the actual location, size or depth or any underground facilities, structures or utilities differ from those indicated on these plans, the Contractor shall immediately notify Clayton Engineering prior to proceeding with the installation of any proposed improvements in the area where the difference exists. These provisions shall in no way absolve any party from complying with the Underground Facility Safety and Damage Prevention Act, Chapter 315, RSMo.

Copyright © 2003
 Clayton Engineering Co.
 All Rights Reserved

Prepared for:
Cracker Barrel
 307 Hartmann Drive
 Lebanon, Tennessee 37087

Project Number: 03017-1
 F.S. F.B.
 FILE: 11/03017-1\PLANS\DRP\PLAN22.DWG

the
clayton engineering company, inc.
 ENGINEERS • SURVEYORS • PLANNERS
 11025 WESTLINE INDUSTRIAL DRIVE
 ST. LOUIS, MISSOURI 63148
 (314) 692-8888 FAX: (314) 692-8888
 clayton-engineering.com

REV. #	DATE	DESCRIPTION
1	09/03/03	REV. ROAD ACCESS, MISC. REV.
2	01/03/03	MISC. REV. PER CLIENT COMMENTS
3	02/10/03	MISC. REV. PER CITY COMMENTS

CRACKER BARREL OLD COUNTRY STORE, INC.
 307 Hartmann Drive
 Lebanon, Tennessee 37087
 (615) 444-5533 Fax (615) 443-9576



STORE NAME & LOCATION
 PROPOSED LOT 1 OF PROGRESS POINT VILLAGE
EROSION CONTROL PLAN
 MO. STATE HWY. K & WELDON SPRING ROAD
 CITY OF OFALLON
 ST. CHARLES COUNTY, MO. 63304

DRAWN BY: HLT
CHECKED BY: DJB
DATE: 7/18/03
SHEET: