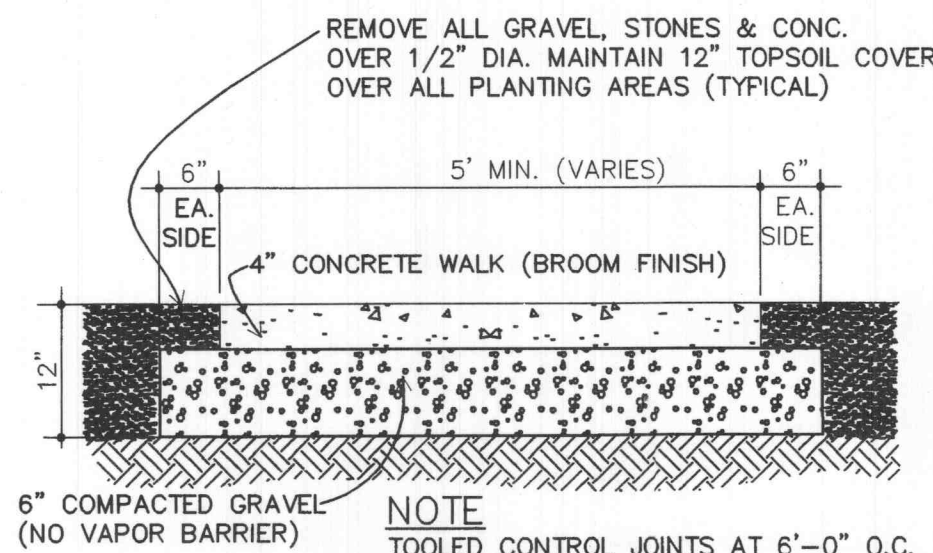


TYPICAL PAVING MATERIALS:  
 A. 2" ASPHALTIC CONCRETE WEARING SURFACE AND 2" BINDER COURSE  
 B. 8" STONE BASE

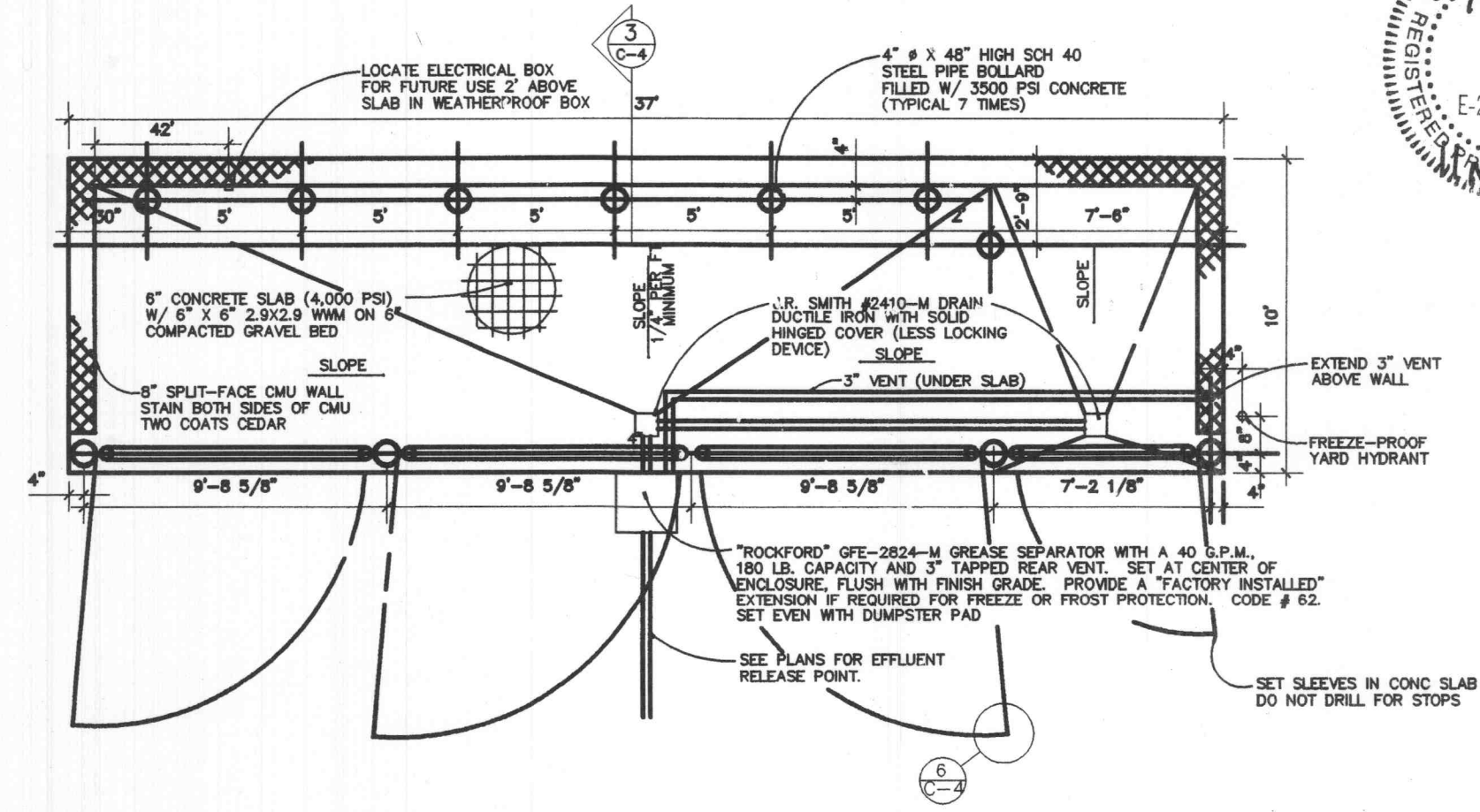
**1 ASPHALT PAVING**

13 SCALE: 1" = 1'-0"



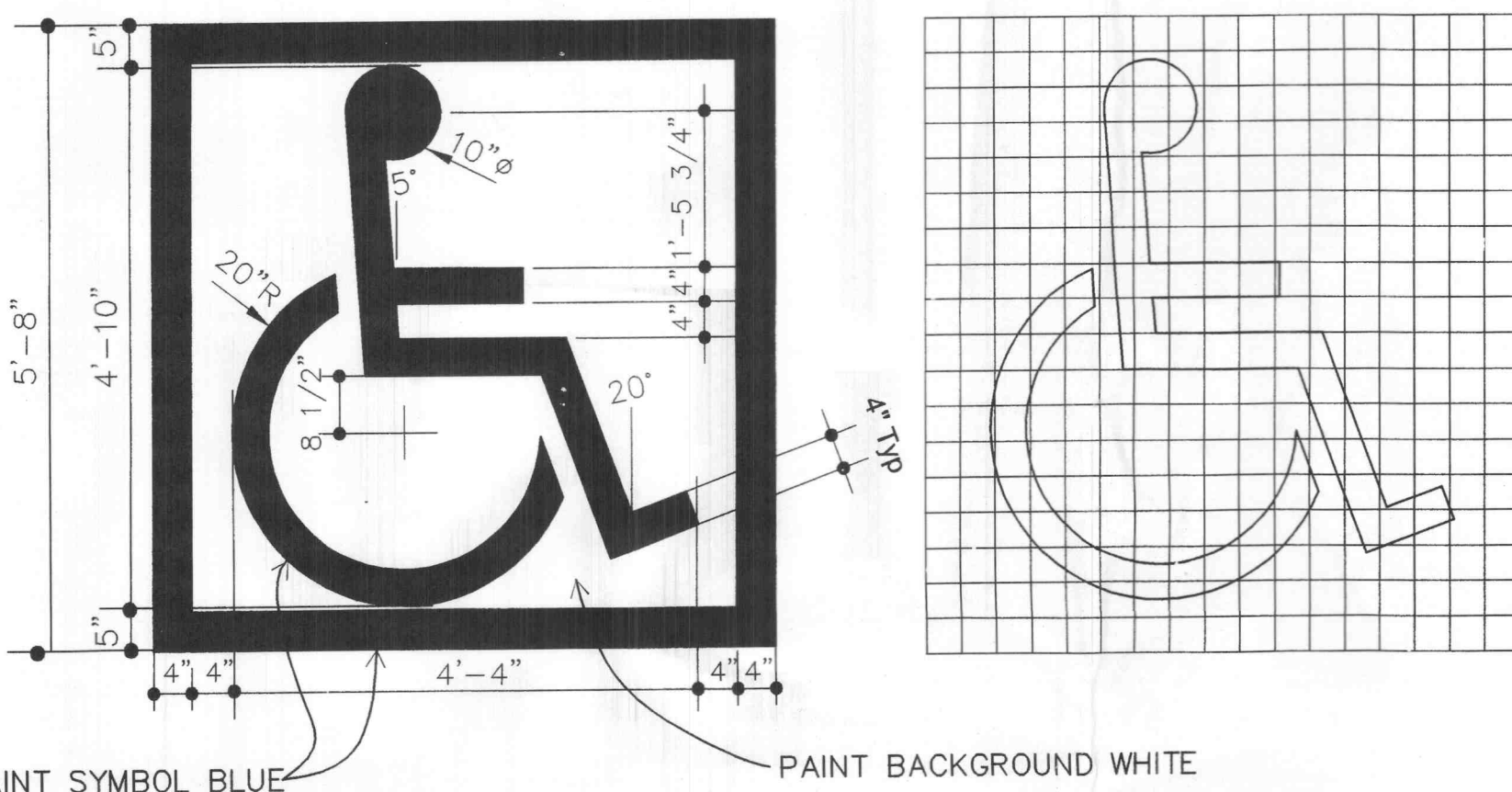
**7 SIDEWALK DETAIL**

13 SCALE: 1/4" = 1'-0"



**11 DUMPSTER ENCLOSURE FOUNDATION**

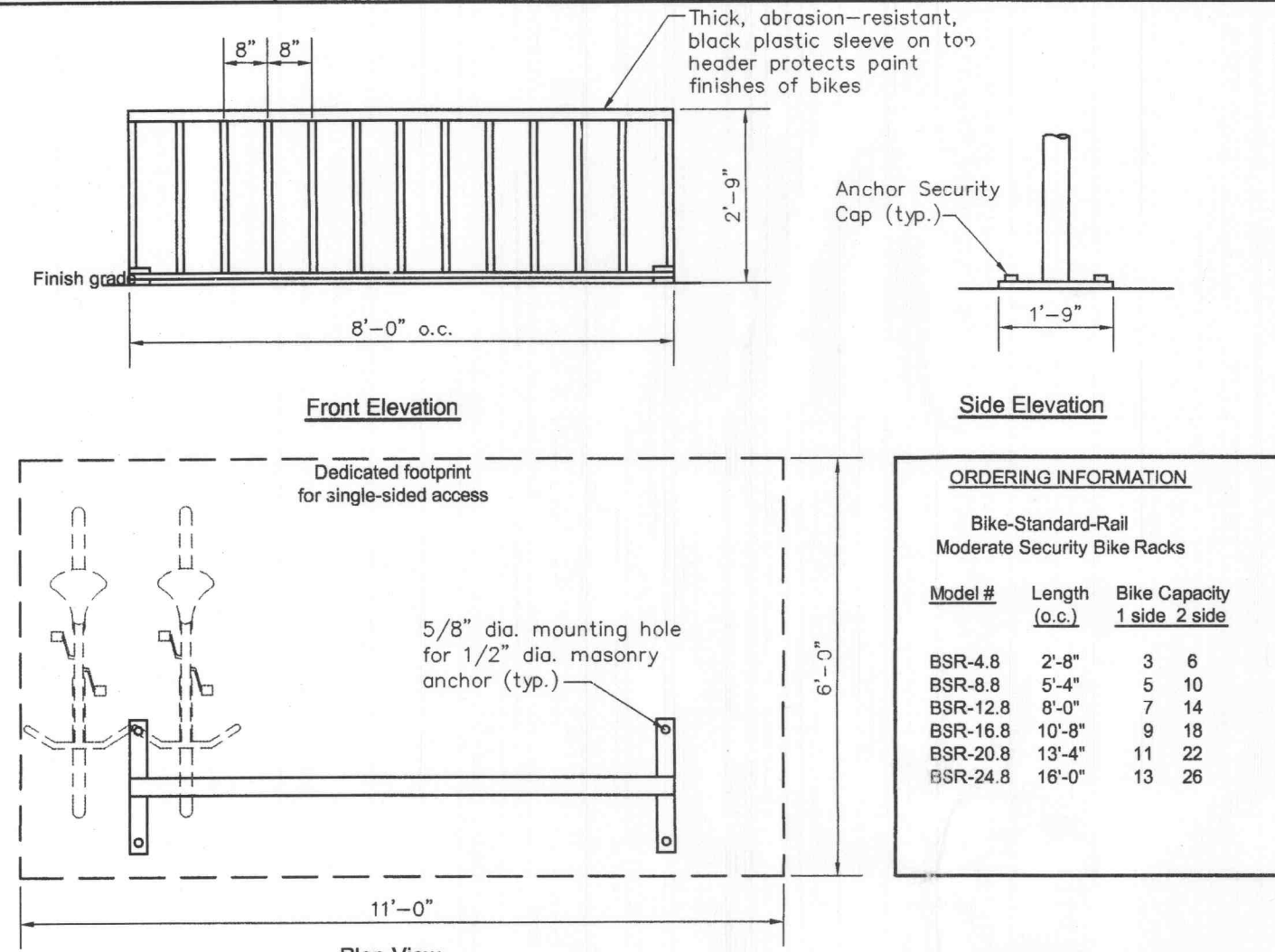
13 SCALE: 1/4" = 1'-0"



PAINT SYMBOL BLUE  
 ACCESSIBILITY SYMBOL PAINTED ON PAVEMENT  
 PROPORTIONING GUIDE

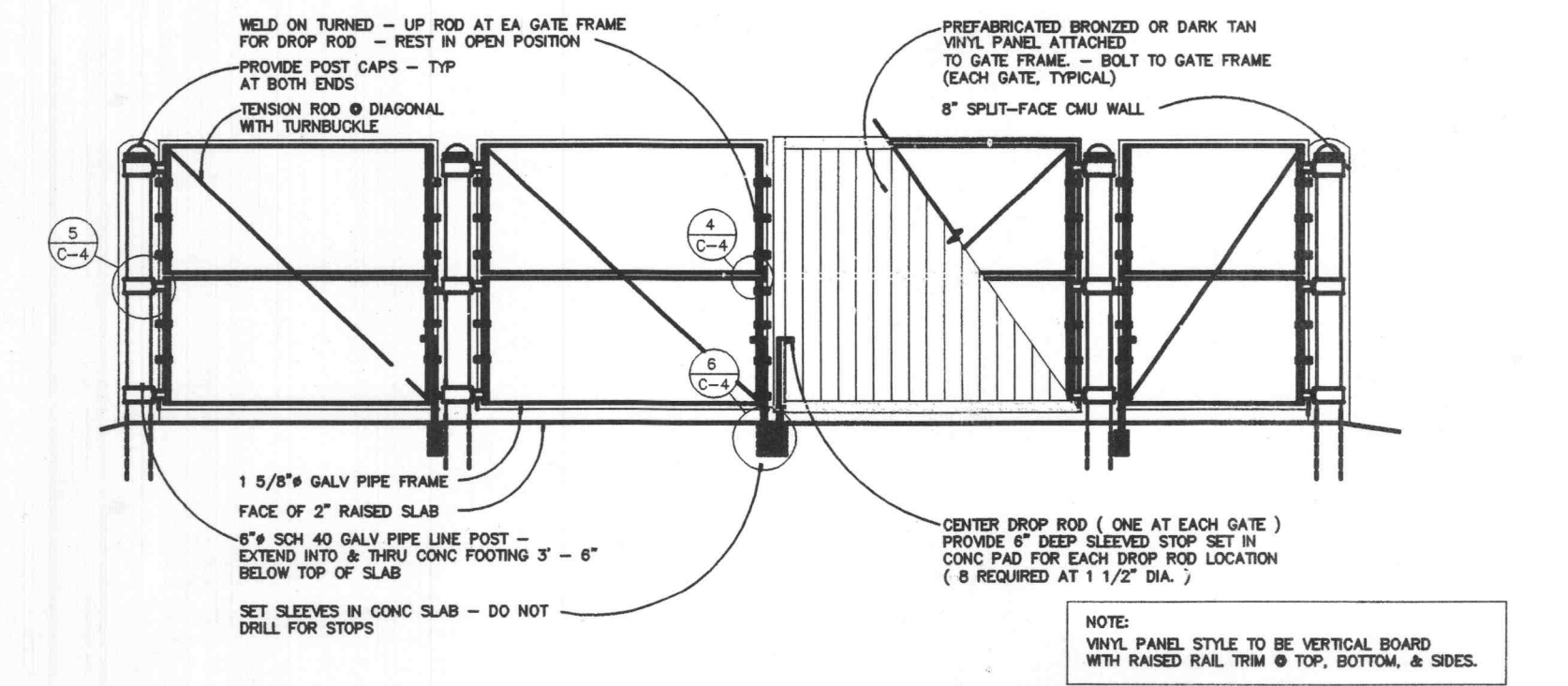
**2 HANDICAP SYMBOL**

13 SCALE: NONE



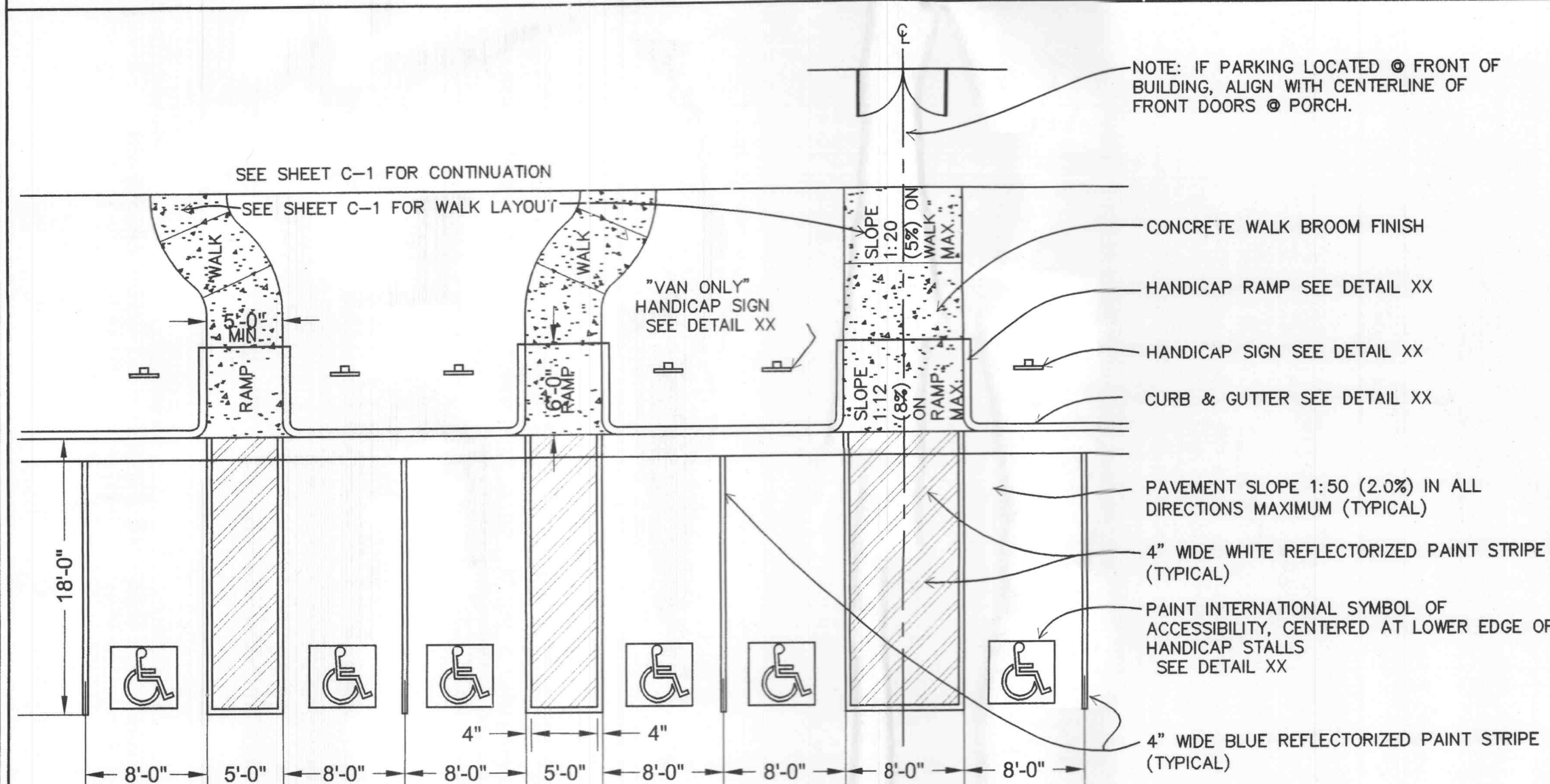
**8 BIKE RACK DETAIL (OR EQUIVALENT)**

13 SCALE: NONE



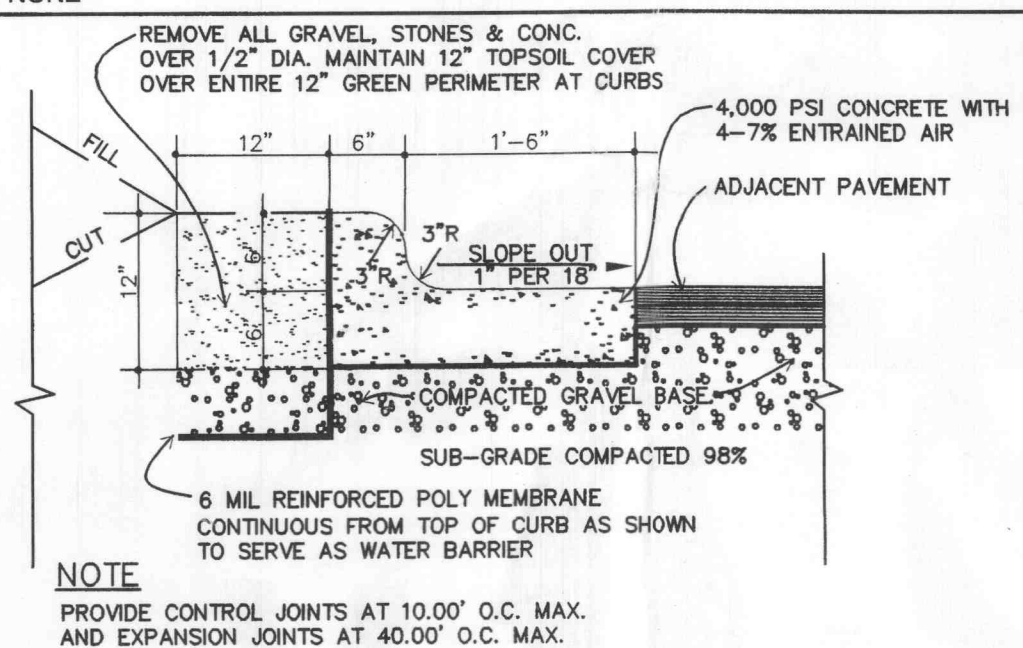
**12 DUMPSTER GATE ELEVATION**

13 SCALE: 1/4" = 1'-0"



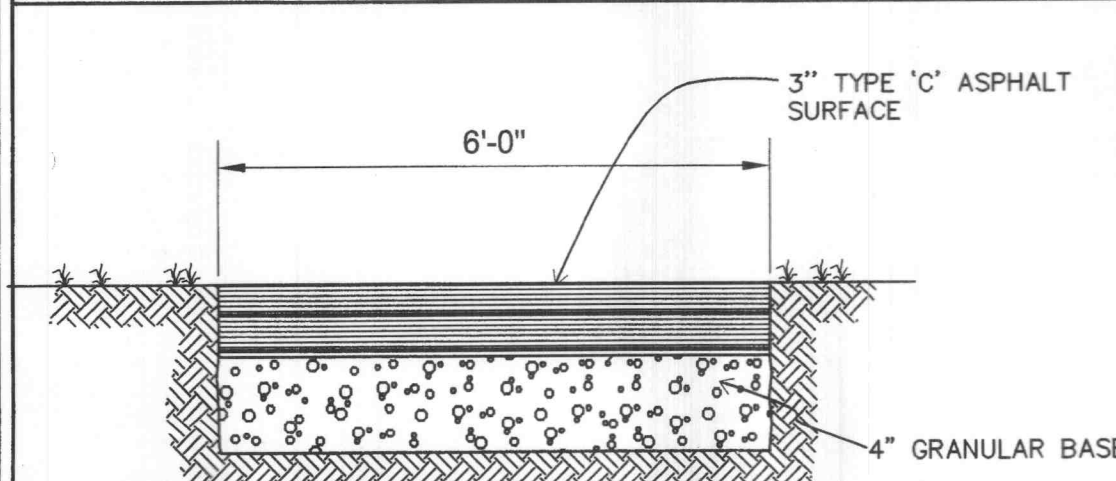
**3 HANDICAP PARKING STALL DETAIL**

13 SCALE: NONE



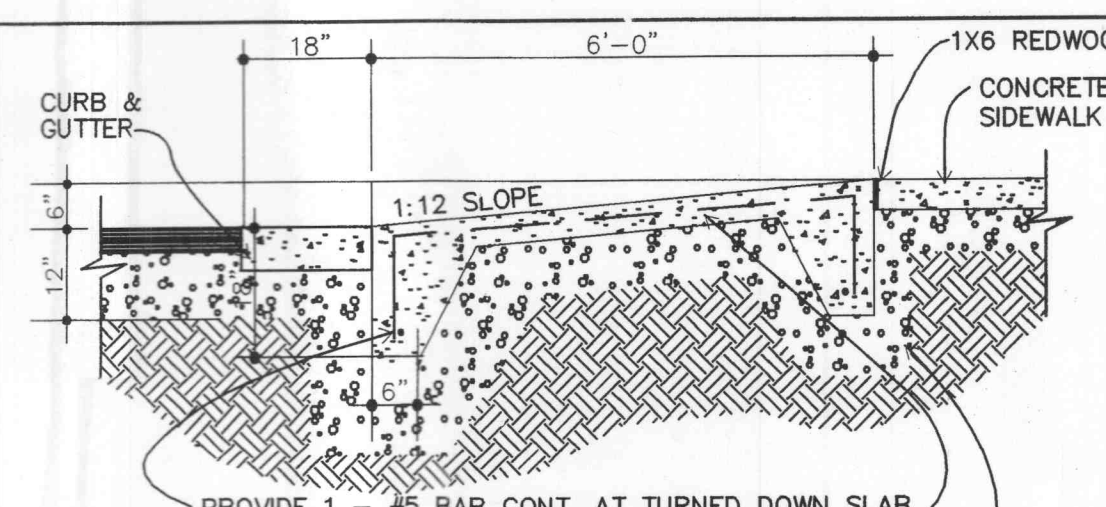
**9 CURB & GUTTER**

13 SCALE: 1" = 1'-0"



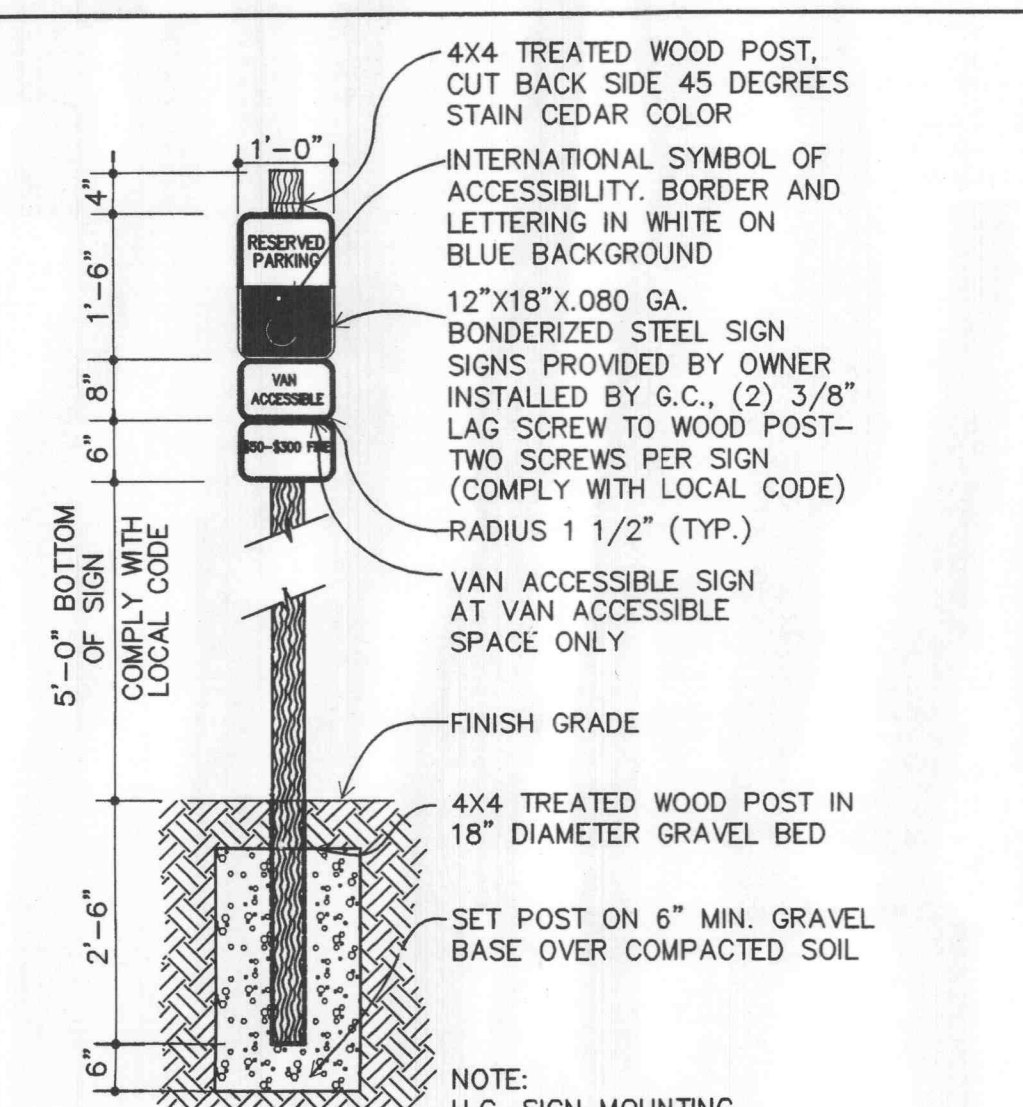
**4 MULTI-PURPOSE TRAIL**

13 SCALE: NONE



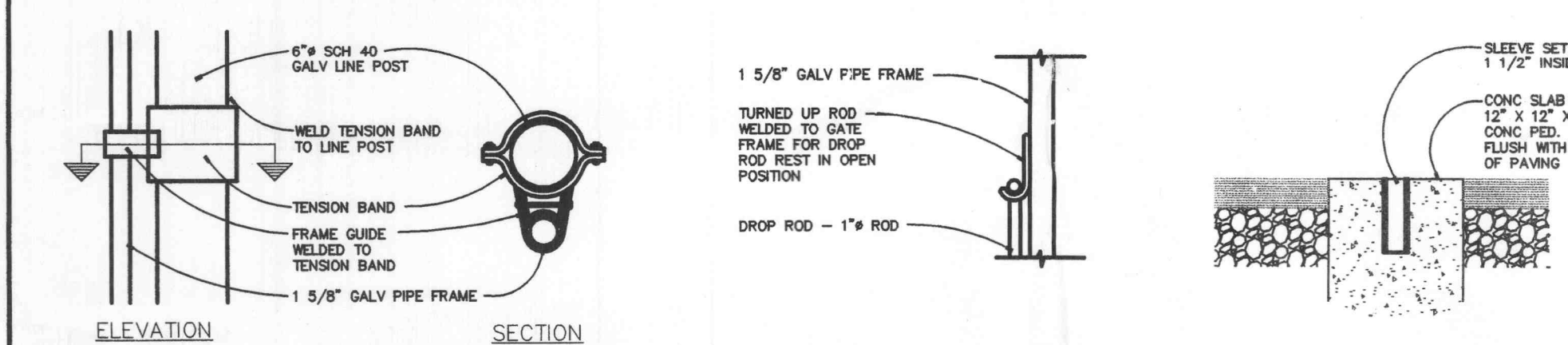
**6 HANDICAP RAMP**

13 SCALE: NONE



**10 HANDICAP SIGN**

13 SCALE: 1" = 1'-0"



**13 POST CONNECTION**

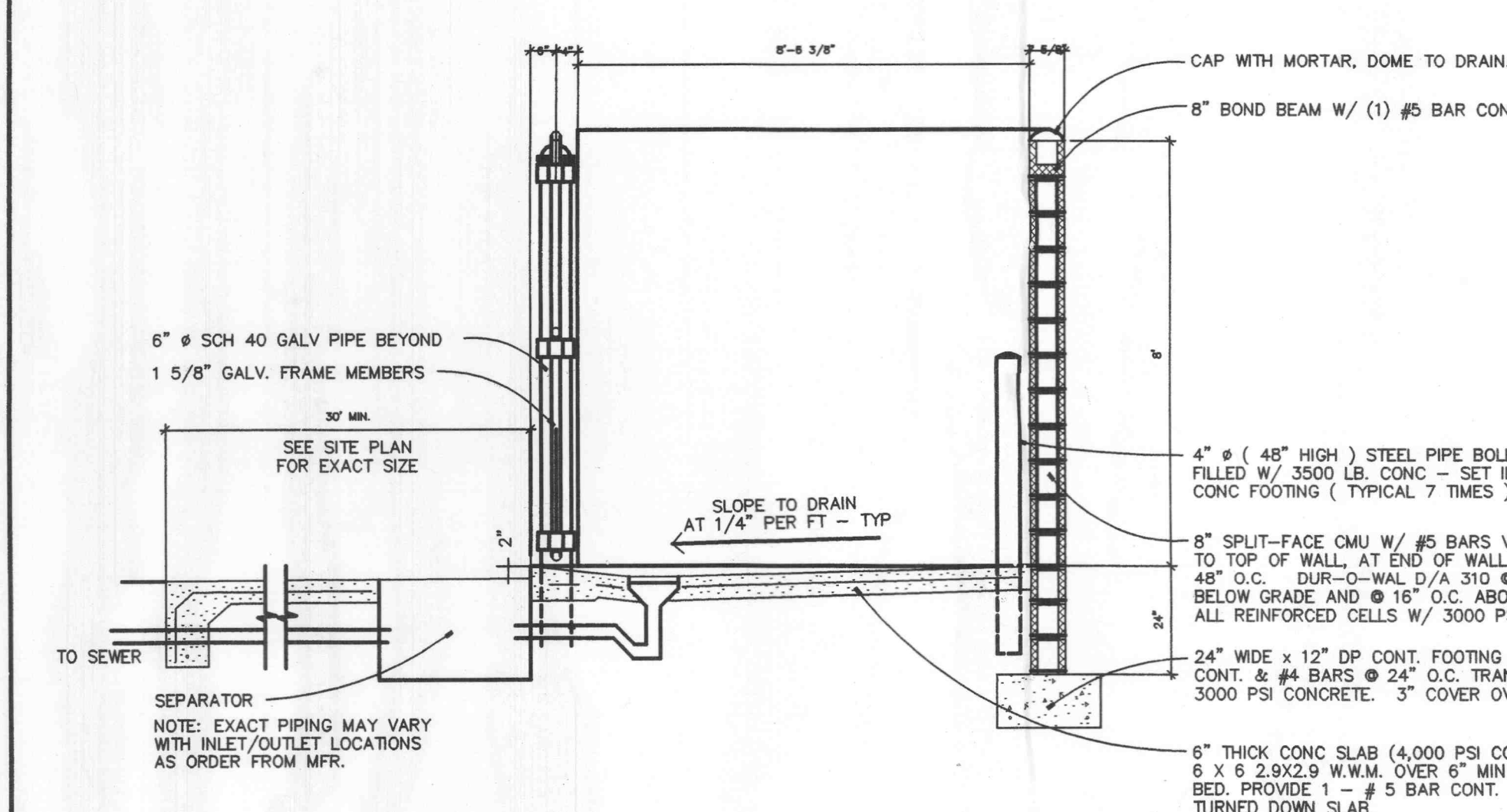
13 SCALE: N.T.S.

**14 GATE DROP**

13 SCALE: N.T.S.

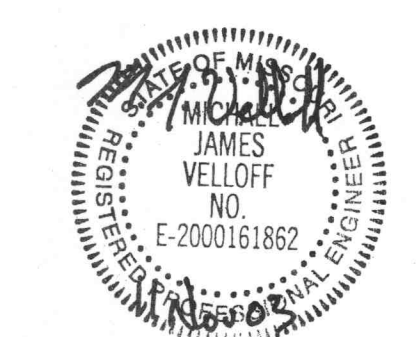
**15 GATE HOLD**

13 SCALE: N.T.S.



**16 DUMPSTER ENCLOSURE SECTION**

13 SCALE: 1/2" = 1'-0"



DESCRIPTION

CRACKER BARREL OLD COUNTRY STORE, INC.  
 307 Hartmann Drive  
 Lebanon, Tennessee 37087  
 (615) 444-5533 Fax (615) 443-9576



STORE NAME & LOCATION  
 PROPOSED LOT 1 OF PROGRESS POINT VILLAGE  
 CONSTRUCTION DETAILS  
 MO. STATE HWY. K & WELDON SPRING ROAD  
 CITY OF O'FALLON  
 ST. CHARLES COUNTY, MO. 63304

DRAWN BY: JCB  
 CHECKED BY: JCB  
 DATE: 7/18/03  
 SHEET: