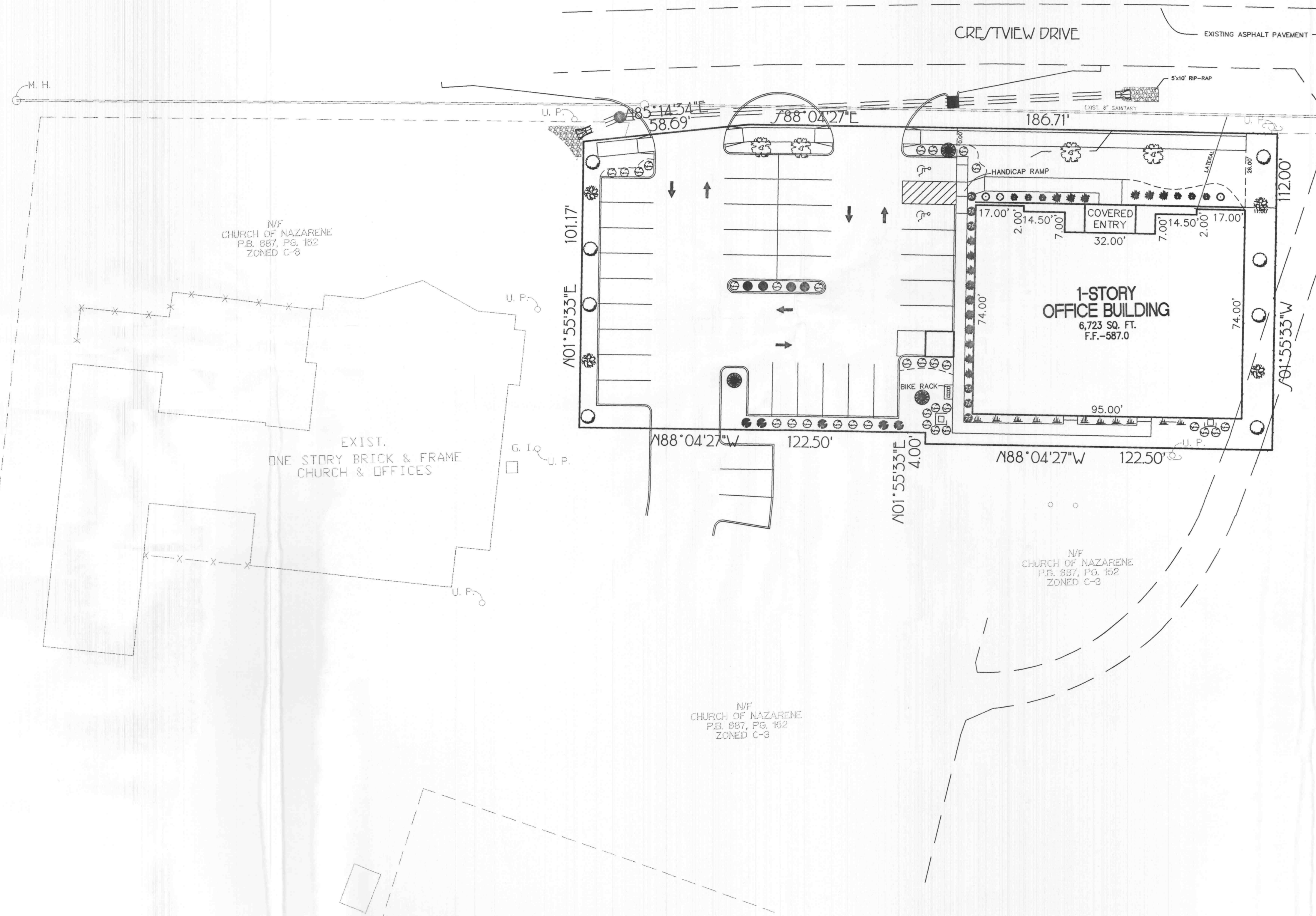


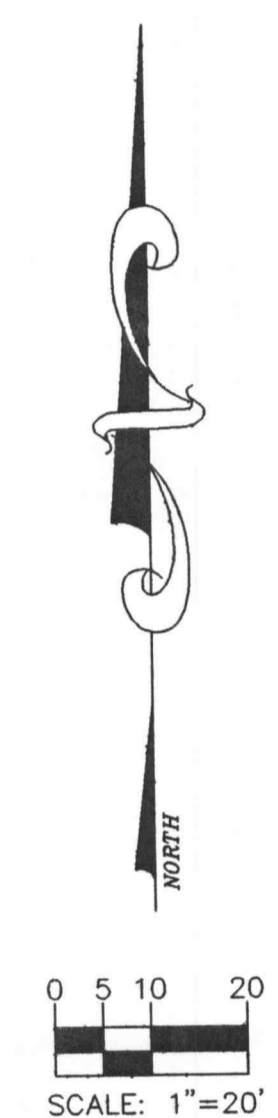
INTERSTATE HIGHWAY 70

CRESTVIEW DRIVE



LANDSCAPE LEGEND

NAME	QUANTITY	SIZE
GREEN ASH	8	2"
ARISTOCRAT PEAR	4	2"
DENSIFORMIS YEW	31	18-24"
CISTENA PLUM TREE	4	1.5-2"
ROBINSON CRABAPPLE	3	1.5-2"
GOLDMOUND SPIREA	4	2 GAL.
BURNING BUSH	5	24-30"
DWARF HAMELN GRASS	11	2 GAL.
DWARF NANDINA	6	2 GAL.
CRIMSON PYGMY BARBERRY	12	2 GAL.
HETZ MIDGET ARBORVITAE	4	3 GAL.
CHINABOY HOLLY	1	2 GAL.
GOLDEN PRIVET	2	3 GAL.
CHINAGIRL HOLLY	6	2 GAL.



"C-2" LANDSCAPE REQUIREMENTS

STREET TREES:
1 TREE FOR EVERY 40 LN FT OF STREET FRONTAGE
245 LN FT @ CRESTVIEW DRIVE
245 LN FT / 40 = 6.13 TREES REQUIRED
= 7 TREES PROVIDED

INTERIOR PARKING:
31 PARKING SPACES x 270= 8,370 SQ. FT.
6% OF 8,370 = 503 SQ. FT. REQUIRED LANDSCAPING
SHRUB PLANTINGS= 667 SQ. FT. PROVIDED

OPEN SPACE:
1 TREE FOR EVERY 3,000 SQ. FT.
26,751 SQ. FT. PROPOSED SITE= 0.61 ACRES
- 18,198 SQ. FT. PROPOSED BLDGS., & PARKING
8,553 SQ. FT. REMAINING OPEN SPACE
8,553 SQ. FT./ 3,000 SQ. FT.= 2.85 TREES REQUIRED
= 12 TREES PROVIDED