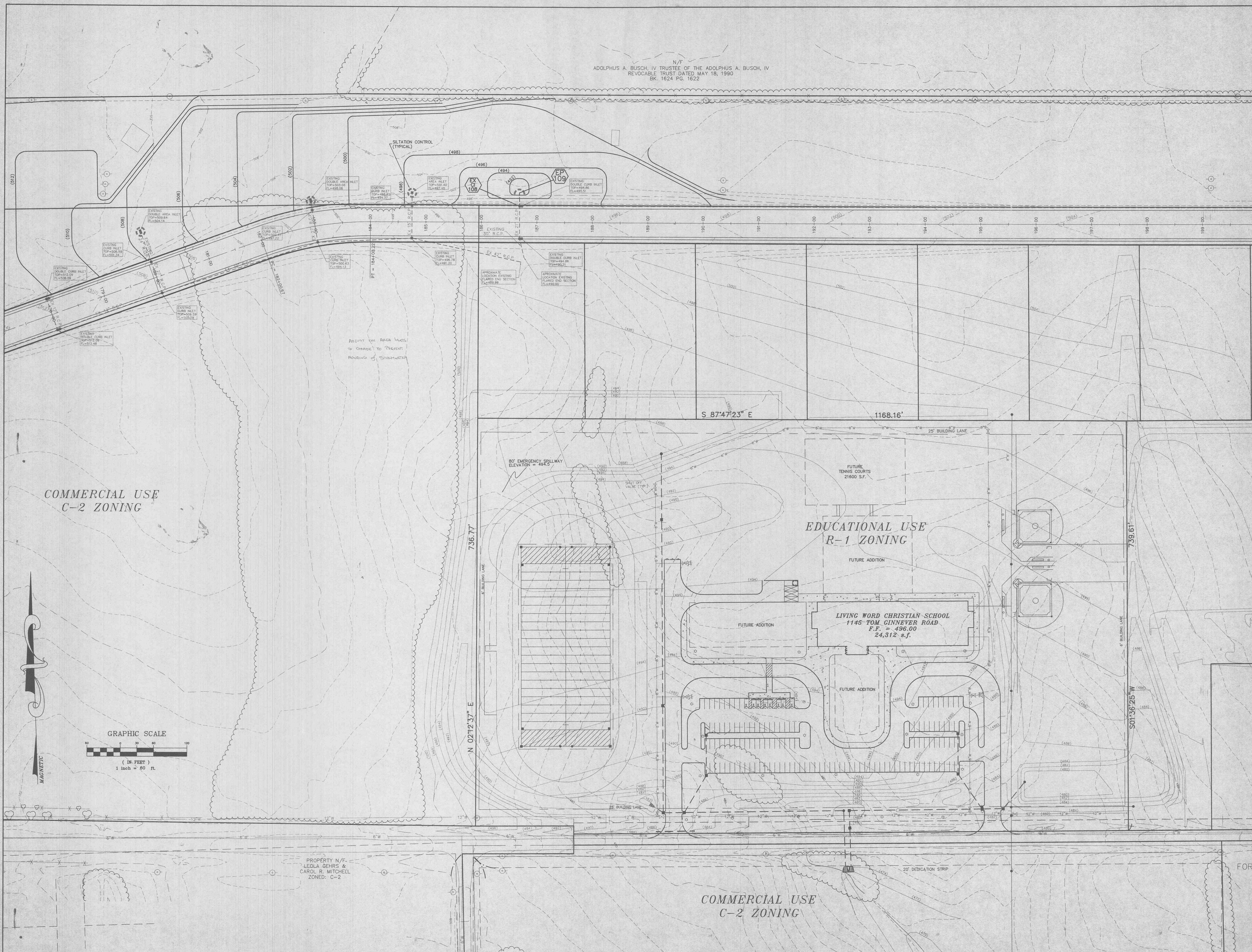


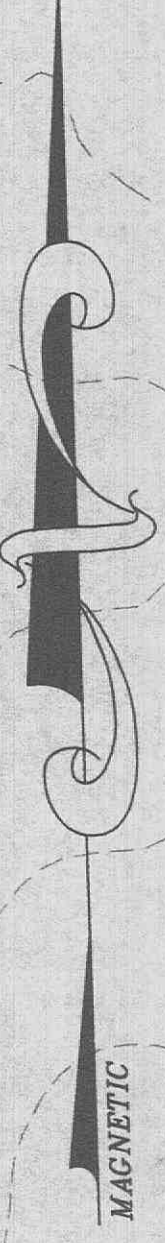
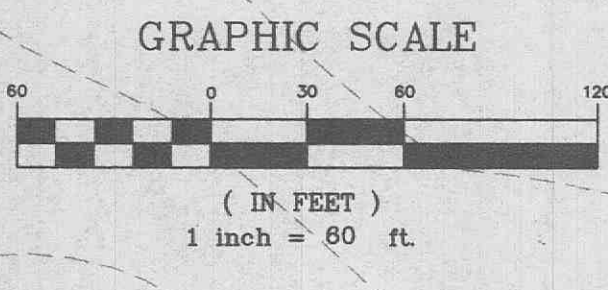
N/F
 ADOLPHUS A. BUSCH, IV TRUSTEE OF THE ADOLPHUS A. BUSCH, IV
 REVOCABLE TRUST DATED MAY 18, 1990
 BK. 1624 PG. 1622



COMMERCIAL USE
 C-2 ZONING

EDUCATIONAL USE
 R-1 ZONING

LIVING WORD CHRISTIAN SCHOOL
 1145 TOM CINNEVER ROAD
 F.F. = 496.00
 24,312 s.f.



PROPERTY N/F
 LEOLA GEHRS &
 CAROL R. MITCHELL
 ZONED: C-2

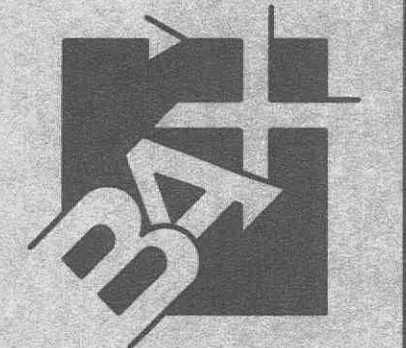
COMMERCIAL USE
 C-2 ZONING

PREPARED FOR: T.R. HUGHES
 239 FOX HILL ROAD
 ST. CHARLES, MO 63301
 (314) 940-9300

DISCLAIMER OF RESPONSIBILITY
 I hereby certify that the measurements intended to be incorporated by my seal are limited to this plan and I hereby disclaim any responsibility for all other drawings, specifications, estimates, reports or other documents or instruments relating to or intended to be used for any part or parts of the construction or engineering project or survey.

Copyright 1999
 The Engineering Company, Inc.
 All Rights Reserved

REVISIONS



ENGINEERING
 PLANNING
 SURVEYING
 1052 South Cloverleaf Drive
 St. Peters, MO. 63376-6445
 314-926-5552
 FAX 926-1718

8-27-99
 DATE
 97-92031
 PROJECT NUMBER
 3 OF 6
 SHEET OF
 92031CON.DWG
 FILE NAME
 SCL CLH
 DRAWN CHECKED

E:\Drawings\92031CON.DWG Fri Aug 27 08:00:02 1999 a1a1.m 11 SCL